



Press Release

Estimated Population and Migration Flows 2016

The Hellenic Statistical Authority (ELSTAT) announces data on the usual resident population of Greece on the 1st January 2017 and the estimates of migration flows for 2016. The population was estimated on the basis of: a) the revised estimates of the population of Greece for the period 1991-2014, in line with the results of the 2011 Population Census, b) the annual data on the registration of vital events for 2016 and c) estimations of annual migration flows of 2016 (immigration and emigration).

- On the basis of the above, the usual resident population of Greece on the 1st January 2017 was estimated at 10,768,193 persons (5,221,277 males and 5,546,916 females), decreased by 0.14% in comparison with the respective population on the 1st January 2016 which amounted to 10,783,748 persons (Table 1, Graph 1).

This development is the result of the natural decrease of the population, which amounted to 25,887 persons (92,898 births against 118,785 deaths) and the net migration, estimated at 10,332 persons.

- The population aged 0-14 years accounts for 14.4% of the total population, whereas 64.0% and 21.6% correspond to the population aged 15-64 and 65 years and over, respectively (Table 2, Graph 2). The ageing ratio (population aged 65 years and over to the population aged 0-14 years) amounted to 149.2.
- Net migration was estimated at 10,332 persons who correspond to 116,867 immigrants and 106,535 emigrants. In 2015, net migration was estimated at -44,905 persons (64,446 immigrants and 109,351 emigrants, Table 3, Graph 6). It should be noted that immigration data also include persons residing in the country as a result of the refugee crisis.
- Migration flows were estimated (except persons related to the refugee crisis) by using appropriate regression models.

Information

Population and Labour Market Statistics Division

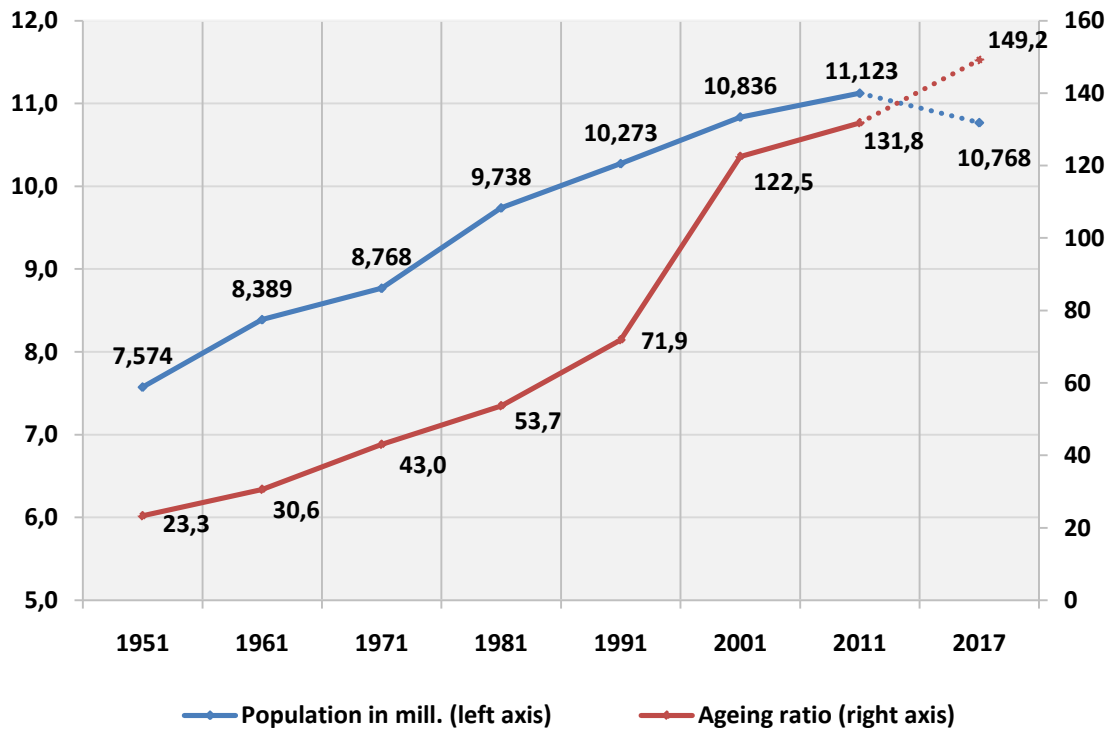
Vital and Migration Statistics Section

Konstantinos Voulgaris

Tel.: +30 213 135 2172

E-mail: k.voulgaris@statistics.gr

Graph 1. Population (in millions) and ageing ratio for the years 1951 – 2011 and 2017



Graph 2. Percentage distribution of population, by age groups for the years 1951 – 2011 and 2017

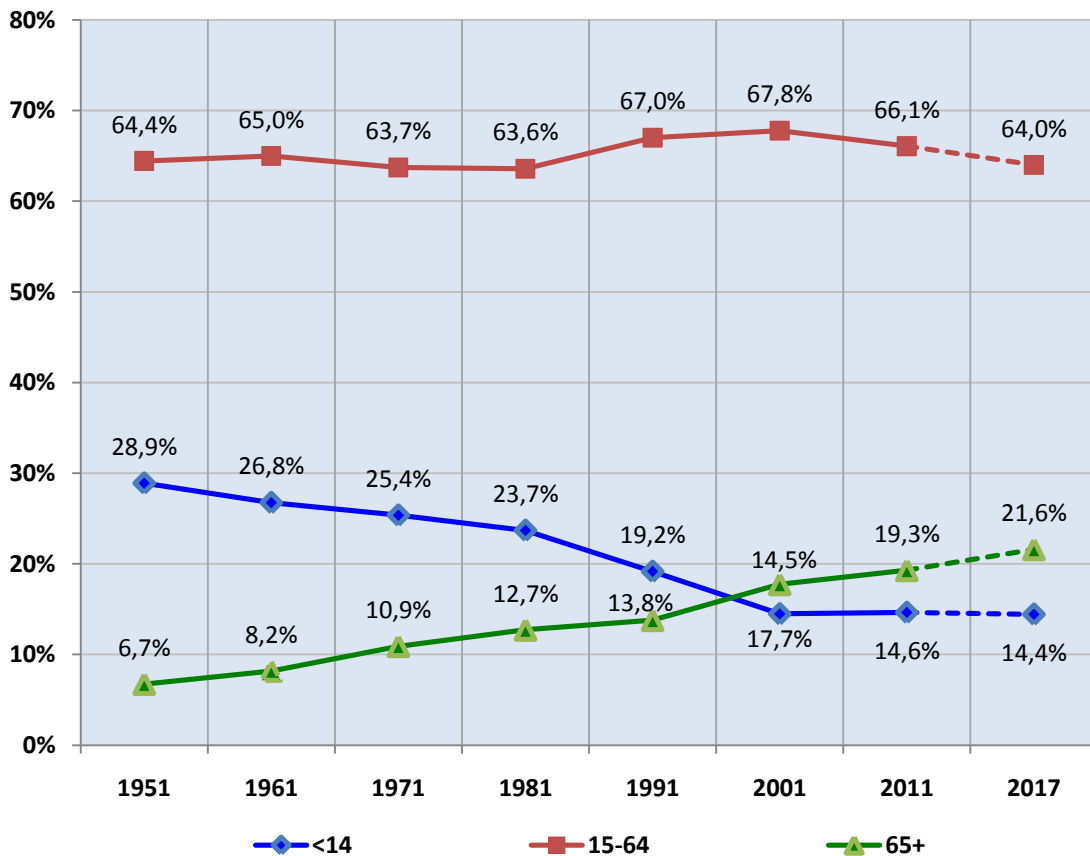
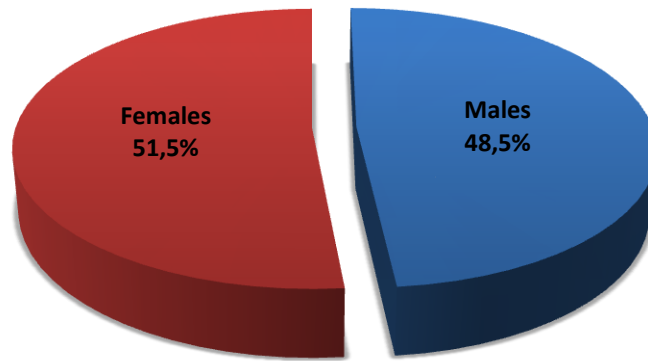


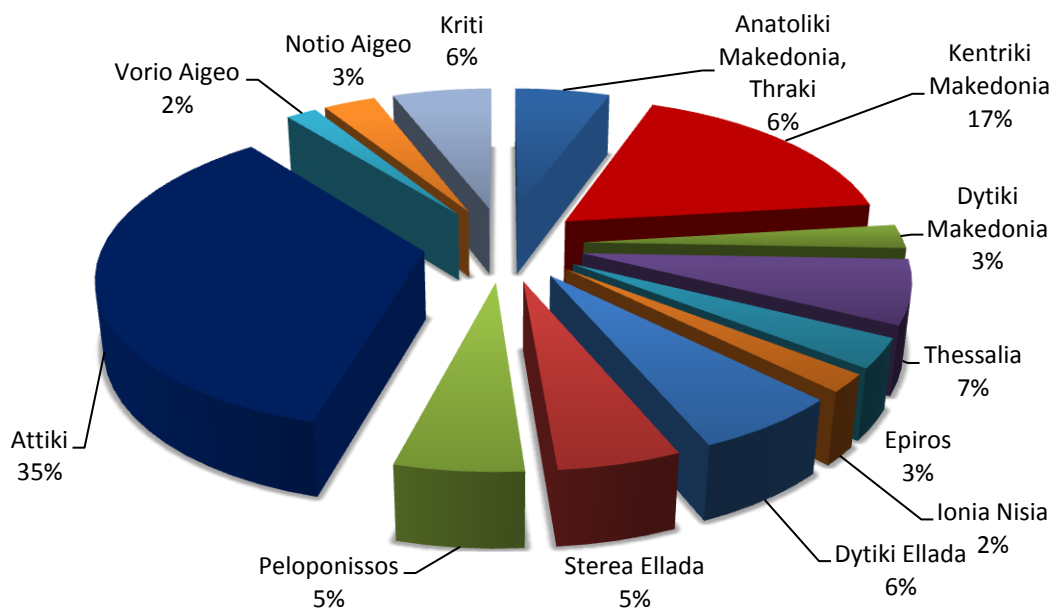
Table 1. Population on 1st January 2017 by sex and Region and Prefecture (Nomos)

	MALES	FEMALES	TOTAL
TOTAL GREECE	5,221,277	5,546,916	10,768,193
Anatoliki Makedonia, Thraki	298,629	304,170	602,799
Evros	75,025	72,684	147,709
Xanthi	56,202	55,910	112,112
Rodopi	55,162	56,569	111,731
Drama	46,541	50,295	96,836
Kavala	65,699	68,712	134,411
Kentriki Makedonia	904,004	976,118	1,880,122
Imathia	69,372	72,145	141,517
Thessaloniki	524,618	583,467	1,108,085
Kilkis	40,875	39,887	80,762
Pella	68,147	70,436	138,583
Pieria	64,556	66,832	131,388
Serres	80,909	88,333	169,242
Chalkidiki	55,527	55,018	110,545
Dytiki Makedonia	133,663	137,825	271,488
Grevena	15,980	14,648	30,628
Kastoria	23,157	24,566	47,723
Kozani	69,824	73,117	142,941
Florina	24,702	25,494	50,196
Thessalia	354,620	371,254	725,874
Karditsa	52,595	55,389	107,984
Larissa	137,137	145,405	282,542
Magnissia	99,570	105,168	204,738
Trikala	65,318	65,292	130,610
Epiros	163,924	171,326	335,250
Arta	31,883	32,915	64,798
Thesprotia	22,333	22,798	45,131
Ioannina	81,209	86,223	167,432
Preveza	28,499	29,390	57,889
Ionia Nisia	100,887	104,544	205,431
Zakynthos	19,707	20,231	39,938
Kerkyra	49,858	52,755	102,613
Kefallonia	19,298	19,647	38,945
Lefkada	12,024	11,911	23,935
Dytiki Ellada	327,858	336,112	663,970
Etolokarnania	101,298	102,861	204,159
Achaia	147,030	156,194	303,224
Ilia	79,530	77,057	156,587
Sterea Ellada	277,372	278,389	555,761
Viotia	61,808	59,196	121,004
Evia	106,595	106,169	212,764
Evritania	9,616	9,669	19,285
Fthiotida	78,060	82,218	160,278
Fokida	21,293	21,137	42,430
Peloponissos	288,826	290,356	579,182
Argolida	48,522	48,735	97,257
Arkadia	41,910	41,341	83,251
Korinthia	72,828	75,712	148,540
Lakonia	46,298	44,423	90,721
Messinia	79,268	80,145	159,413
Attiki	1,790,853	1,982,706	3,773,559
Vorio Aigeo	104,035	99,665	203,700
Lesvos	53,802	52,382	106,184
Samos	22,650	20,873	43,523
Chios	27,583	26,410	53,993
Notio Aigeo	167,778	170,605	338,383
Dodekanissos	106,169	105,256	211,425
Kyklades	61,609	65,349	126,958
Kriti	308,828	323,846	632,674
Iraklio	151,395	160,245	311,640
Lassithi	36,408	38,055	74,463
Rethymno	42,363	45,119	87,482
Chania	78,662	80,427	159,089

Graph 3. Percentage distribution of population by sex on the 1st January 2017 (Whole country)



Graph 4. Percentage distribution of population by NUTS2 Region on the 1st January 2017



Graph 5. Population by sex and NUTS2 Region on the 1st January 2017

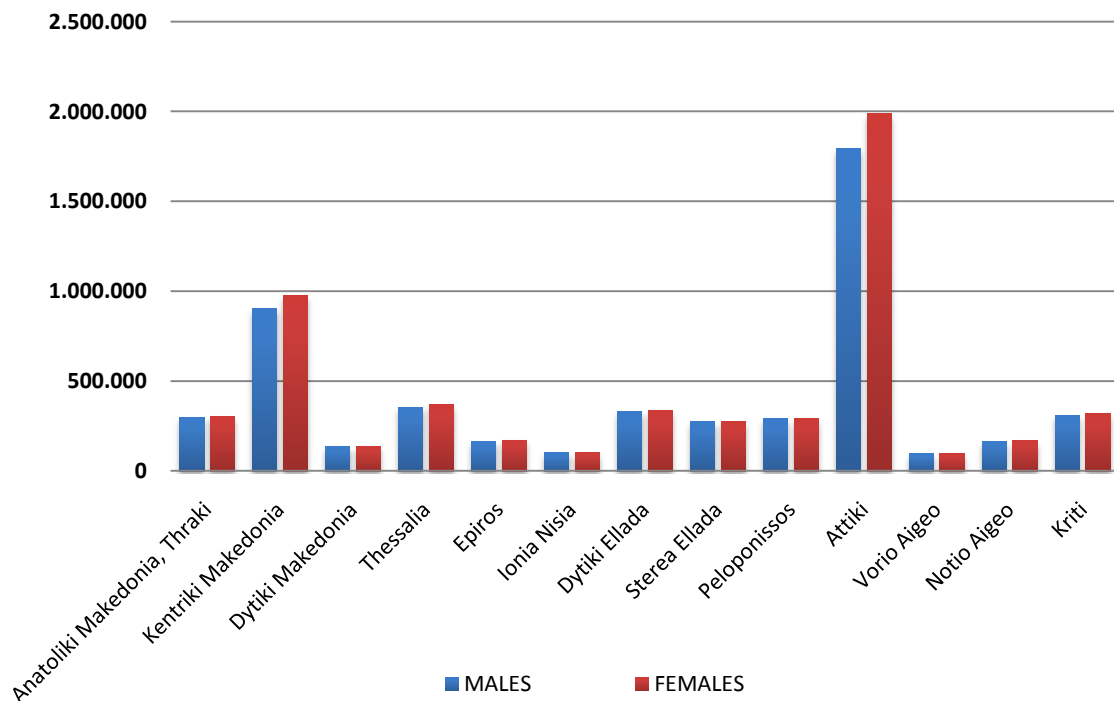


Table 2. Population on 1st January 2017 by sex and age group

	MALES	FEMALES	TOTAL
TOTAL	5,221,277	5,546,916	10,768,193
0-4	244,596	230,963	475,559
5-9	280,191	266,829	547,020
10-14	273,144	258,946	532,090
15-19	275,824	262,203	538,027
20-24	282,307	269,192	551,499
25-29	293,909	292,302	586,211
30-34	337,784	333,768	671,552
35-39	398,648	398,726	797,374
40-44	398,915	408,224	807,139
45-49	400,874	424,570	825,444
50-54	358,241	389,965	748,206
55-59	337,815	377,289	715,104
60-64	310,338	342,889	653,227
65-69	286,853	323,164	610,017
70-74	239,299	278,200	517,499
75-79	205,680	263,084	468,764
80-84	161,774	225,643	387,417
85-89	91,664	133,006	224,670
90-94	32,524	51,280	83,804
95-99	8,292	12,178	20,470
100+	2,605	4,495	7,100

Graph 5. Population pyramid on the 1st January 2017

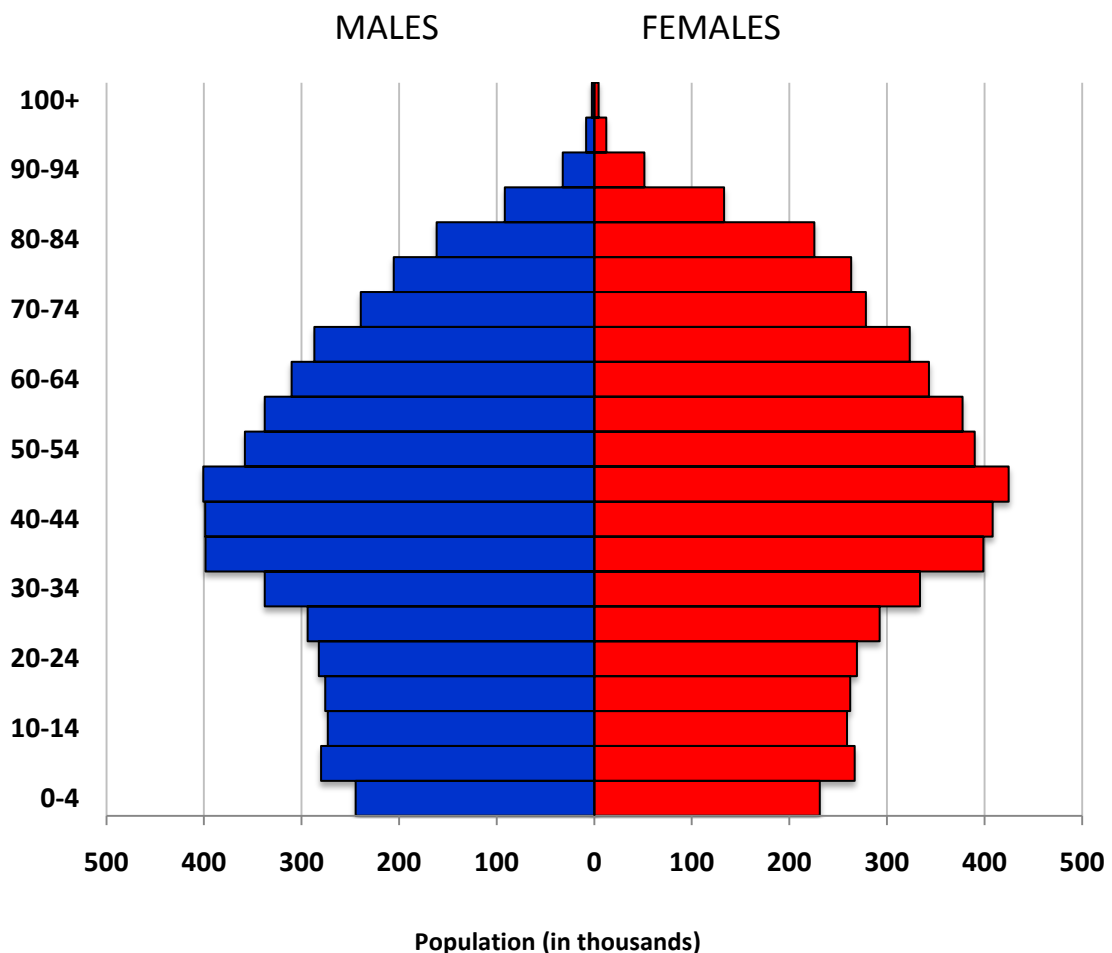
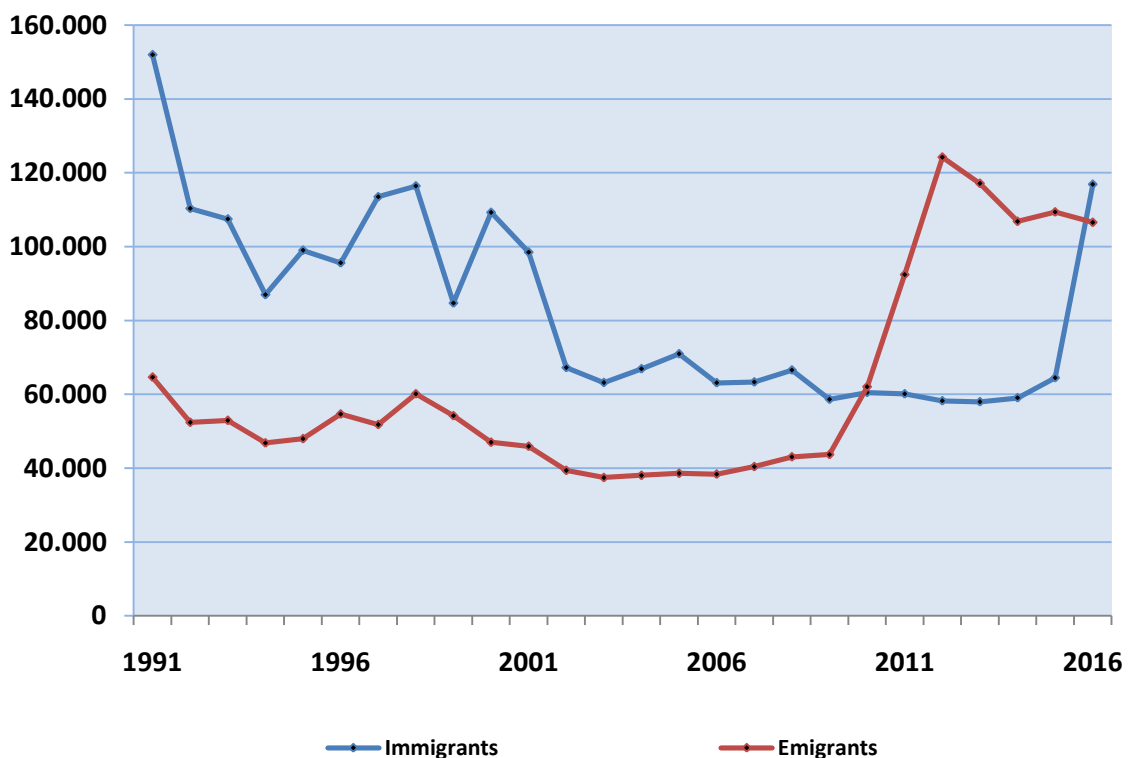


Table 3. Immigrants – Emigrants 1991 – 2016

Year	Immigrants	Emigrants	Net Migration
1991	151,978	64,628	87,350
1992	110,334	52,389	57,945
1993	107,462	52,929	54,533
1994	86,959	46,813	40,146
1995	98,989	47,967	51,022
1996	95,585	54,628	40,957
1997	113,477	51,794	61,683
1998	116,411	60,119	56,292
1999	84,695	54,175	30,520
2000	109,251	46,993	62,258
2001	98,471	45,909	52,562
2002	67,220	39,378	27,842
2003	63,141	37,433	25,708
2004	66,871	38,041	28,830
2005	70,933	38,583	32,350
2006	63,094	38,368	24,726
2007	63,298	40,400	22,898
2008	66,529	43,044	23,485
2009	58,613	43,686	14,927
2010	60,462	62,041	-1,579
2011	60,089	92,404	-32,315
2012	58,200	124,194	-65,994
2013	57,946	117,094	-59,148
2014	59,014	106,804	-47,790
2015	64,446	109,351	-44,905
2016	116,867	106,535	10,332

Graph 6. Immigrants – Emigrants 1991 – 2016



EXPLANATORY NOTES

- Vital and Migration Statistics** The Vital Statistics Survey is being conducted under its current form since 1956. In cooperation with the Regional Statistical Offices of ELSTAT, personal statistical data on vital events are collected on a monthly basis from the Civil Register Offices all over Greece. The survey produces statistical results on a yearly basis. Migration flows are estimated using model techniques and other countries migration data.
- Legal Framework** The survey is fully harmonized with the European statistical practice. It is governed by Law 344/76 concerning the “Registration of vital events” which lays down the obligations of the Civil Register Offices to collect and then to transmit the data, as well as by Law 3832/2010 on the “Greek Statistical System”.
- Coverage** The Vital statistics survey is a census survey and it covers all births, deaths, marriages and registered partnerships which occur all over Greece.
- Reference period** 1/1/2016 – 31/12/2016
- Definitions** **Usual residence** means the place at which a person normally spends the daily period of rest, regardless of temporary absences for purposes of recreation, holiday, visits to friends and relatives, business, medical treatment or religious pilgrimage or, in default, the place of legal or registered residence. Only the following persons shall be considered to be usual residents of the geographical area in question:(i) those who have lived in their place of usual residence for a continuous period of at least 12 months before the reference date; or (ii) those who arrived in their place of usual residence during the 12 months before the reference date with the intention of staying there for at least one year.
- Immigration** means the action by which a person establishes his or her usual residence in the territory of the country for a period that is, or is expected to be, at least 12 months, having previously been a usual resident of another country.
- Emigration** means the action by which a person, having previously been usual resident in the territory of the country, ceases to have his or her usual residence in the country for a period that is, or is expected to be, at least 12 months.
- Methodology** The vital statistics data, after having been collected from the Civil Register Offices, undergo the necessary quality checks, and then they are processed and tabulated. Migration flow data are compiled on the basis of statistical estimations and as regards persons residing in the country as a result of the refugee crisis, the relevant data derive from administrative sources.
- References** More information (tables, graphs, methodology) is available on the website of ELSTAT: <http://www.statistics.gr>, at the link Statistics> >Population and Social Conditions> Demography>.