



HELLENIC REPUBLIC
MINISTRY OF FINANCE



GENERAL SECRETARIAT OF
THE NATIONAL STATISTICAL SERVICE
OF GREECE

Pireas, 8 March 2010

P R E S S R E L E A S E

Decrease of arrivals (5%) and nights spent (6.8%) at hotels, similar establishments and camping, during January - September 2009

ARRIVALS AND NIGHTS SPENT AT HOTELS, SIMILAR ESTABLISHMENTS AND CAMPING: January - September 2009 (provisional data)

The data of the arrivals and nights spent at hotels, similar establishments and camping, during January - September 2009, show that for the total of these establishments the nights spent are decreased by 6.8% and the arrivals are decreased by 5%, as compared to the same period of 2008. This decrease is mainly due to the non-residents and affects mostly the hotels and similar establishments. Campings on the other hand, show an increasing trend, mainly due to the greek residents.

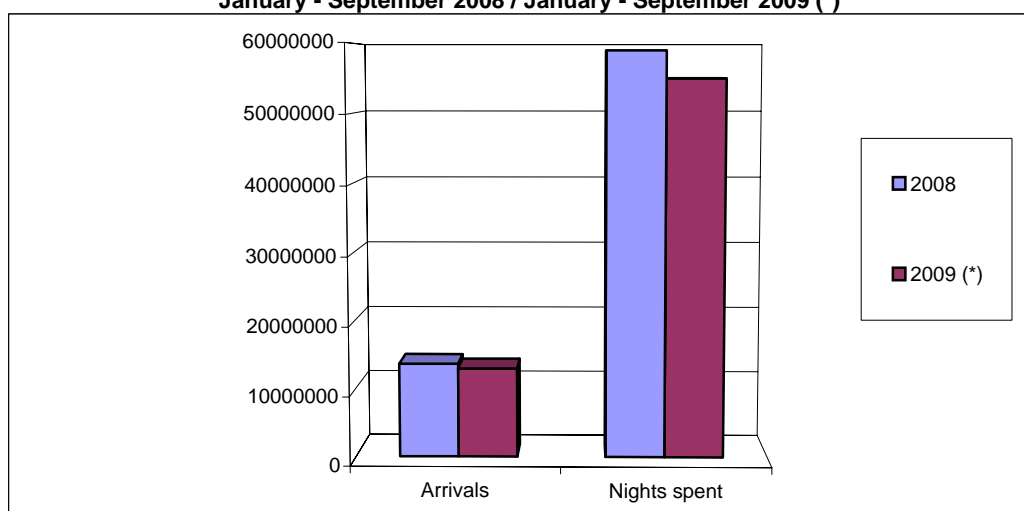
For January - September 2009, the average stay per person is 4.2 nights (and more specifically, 5.4 nights for the non-residents and 2.7 for the greek residents).

The total occupancy of the bed places that where in operation at the hotels and similar establishments (excluding camping) during January - September 2009 was 57.8%, while during January - September 2008 it was 60.8%.

The data presented in this press release are provisional and come from estimations, taking into account the information that is available up to now. They provide a good indication of the occupancy in hotels, similar establishments and camping in Greece, for the period of January - September 2009.

Analytical data, separately for hotels and similar establishments and for camping, are provided at the attached tables and diagrams.

**DIAGRAM 1: Arrivals and nights-spent
at hotels, similar establishments and camping
January - September 2008 / January - September 2009 (*)**



(*) Data for 2009 are provisional and estimated

Information:
Trade and Services Statistics Division
Tourism Statistics Section
Magdalini Giama
Tel.: ++ 30 213 135 2951
Fax: ++ 30 213 135 2947
e-mail: tourism.sector@statistics.gr

**Table 1. Arrivals of residents and non-residents at hotels and similar establishments
for January - September, for the years 2008 - 2009 (*)**

Month	TOTAL			RESIDENTS			NON-RESIDENTS		
	2008	2009 (*)	% change	2008	2009 (*)	% change	2008	2009 (*)	% change
Total	13.322.184	12.636.147	-5,1%	5.561.316	5.485.099	-1,4%	7.760.868	7.151.048	-7,9%
January	536.557	492.487	-8,2%	412.630	394.900	-4,3%	123.927	97.587	-21,3%
February	567.887	533.410	-6,1%	427.040	423.556	-0,8%	140.847	109.854	-22,0%
March	769.828	654.600	-15,0%	518.480	455.514	-12,1%	251.348	199.086	-20,8%
April	1.021.661	968.492	-5,2%	572.276	542.257	-5,2%	449.385	426.235	-5,2%
May	1.686.730	1.560.075	-7,5%	580.265	570.315	-1,7%	1.106.465	989.760	-10,5%
June	2.005.156	1.876.284	-6,4%	674.086	654.297	-2,9%	1.331.070	1.221.987	-8,2%
July	2.304.851	2.258.103	-2,0%	813.193	859.172	5,7%	1.491.658	1.398.931	-6,2%
August	2.481.039	2.447.846	-1,3%	932.992	967.110	3,7%	1.548.047	1.480.736	-4,3%
September	1.948.475	1.844.850	-5,3%	630.354	617.978	-2,0%	1.318.121	1.226.872	-6,9%

(*) Data for 2009 are provisional and estimated

**Table 2. Nights spent of residents and non-residents at hotels and similar establishments
for January - September, for the years 2008 - 2009 (*)**

Month	TOTAL			RESIDENTS			NON-RESIDENTS		
	2008	2009 (*)	% change	2008	2009 (*)	% change	2008	2009 (*)	% change
Total	57.433.109	53.399.229	-7,0%	13.951.168	14.182.676	1,7%	43.481.941	39.216.553	-9,8%
January	1.072.989	992.894	-7,5%	785.421	765.603	-2,5%	287.568	227.291	-21,0%
February	1.112.400	1.039.189	-6,6%	786.094	774.290	-1,5%	326.306	264.899	-18,8%
March	1.574.983	1.340.708	-14,9%	992.336	891.921	-10,1%	582.647	448.787	-23,0%
April	2.515.547	2.422.926	-3,7%	1.228.052	1.160.518	-5,5%	1.287.495	1.262.408	-1,9%
May	6.527.992	5.864.642	-10,2%	1.137.890	1.127.906	-0,9%	5.390.102	4.736.736	-12,1%
June	9.530.452	8.822.401	-7,4%	1.561.306	1.541.141	-1,3%	7.969.146	7.281.260	-8,6%
July	12.292.563	11.438.554	-6,9%	2.551.036	2.737.297	7,3%	9.741.527	8.701.257	-10,7%
August	13.364.045	12.726.473	-4,8%	3.326.387	3.557.756	7,0%	10.037.658	9.168.717	-8,7%
September	9.442.138	8.751.442	-7,3%	1.582.646	1.626.244	2,8%	7.859.492	7.125.198	-9,3%

(*) Data for 2009 are provisional and estimated

**Table 3. Occupancy of the bed-places that where in operation at hotels and similar establishments
for January - September, for the years 2008 - 2009 (*)**

Month	Occupancy of bed-places	
	2008	2009 (*)
Occupancy of the period	60,8	57,8
January	25,4	24,3
February	28,0	27,7
March	34,3	30,2
April	29,0	29,8
May	48,7	45,5
June	64,5	61,2
July	76,4	71,9
August	81,5	77,8
September	67,5	64,2

(*) Data for 2009 are provisional

**Table 4. Arrivals of residents and non-residents at camping
for January - September, for the years 2008 - 2009 (*)**

Month	TOTAL			RESIDENTS			NON-RESIDENTS		
	2008	2009 (*)	% change	2008	2009 (*)	% change	2008	2009 (*)	% change
Total	384.733	384.655	0,0%	159.450	159.711	0,2%	225.283	224.944	-0,2%
January	124	98	-21,0%	18	36	100,0%	106	62	-41,5%
February	41	89	117,1%	6	16	166,7%	35	73	108,6%
March	265	196	-26,0%	54	66	22,2%	211	130	-38,4%
April	4.430	4.410	-0,5%	295	334	13,2%	4.135	4.076	-1,4%
May	20.401	21.906	7,4%	2.196	3.691	68,1%	18.205	18.215	0,1%
June	53.965	53.665	-0,6%	24.305	23.329	-4,0%	29.660	30.336	2,3%
July	123.989	123.876	-0,1%	55.230	59.011	6,8%	68.759	64.865	-5,7%
August	154.779	152.863	-1,2%	73.097	68.509	-6,3%	81.682	84.354	3,3%
September	26.739	27.552	3,0%	4.249	4.719	11,1%	22.490	22.833	1,5%

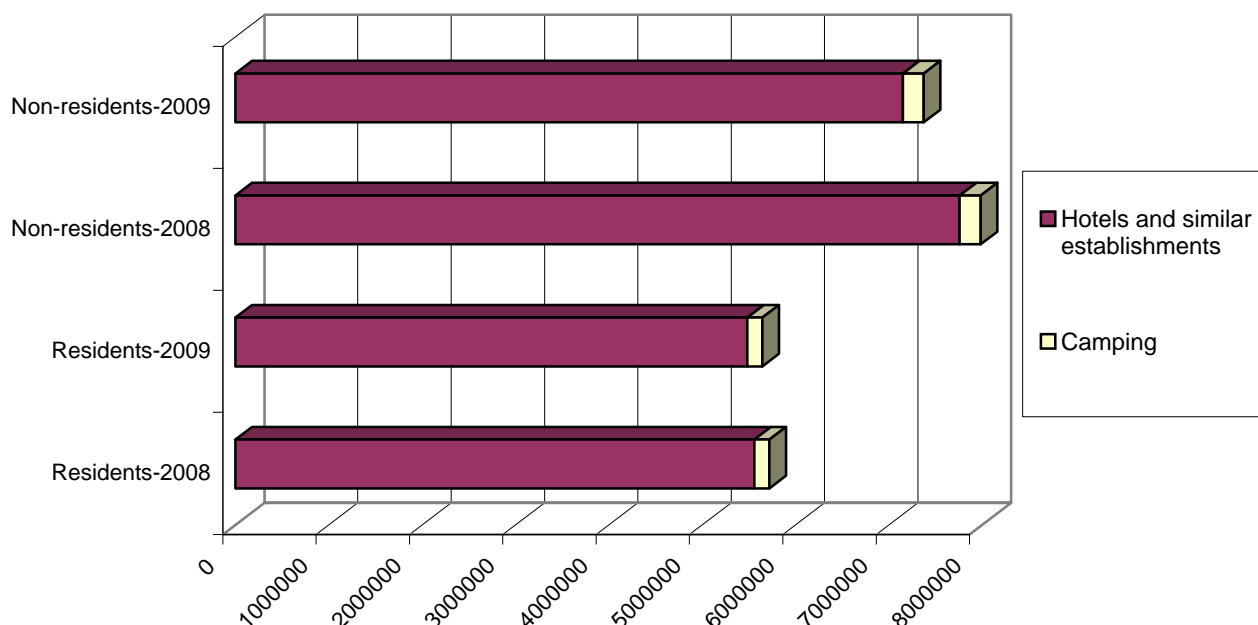
(*) Data for 2009 are provisional and estimated

**Table 5. Nights spent of residents and non-residents at camping
for January - September, for the years 2008 - 2009 (*)**

Month	TOTAL			RESIDENTS			NON-RESIDENTS		
	2008	2009 (*)	% change	2008	2009 (*)	% change	2008	2009 (*)	% change
Total	1.536.365	1.566.308	1,9%	807.318	853.590	5,7%	729.047	712.718	-2,2%
January	606	126	-79,2%	60	43	-28,3%	546	83	-84,8%
February	315	305	-3,2%	44	17	-61,4%	271	288	6,3%
March	627	1.479	135,9%	151	1.103	630,5%	476	376	-21,0%
April	11.904	10.934	-8,1%	3.117	1.854	-40,5%	8.787	9.080	3,3%
May	59.628	61.422	3,0%	13.445	16.817	25,1%	46.183	44.605	-3,4%
June	180.939	200.011	10,5%	91.071	108.055	18,6%	89.868	91.956	2,3%
July	519.812	528.517	1,7%	263.489	288.049	9,3%	256.323	240.468	-6,2%
August	650.651	649.301	-0,2%	391.081	388.484	-0,7%	259.570	260.817	0,5%
September	111.883	114.213	2,1%	44.860	49.168	9,6%	67.023	65.045	-3,0%

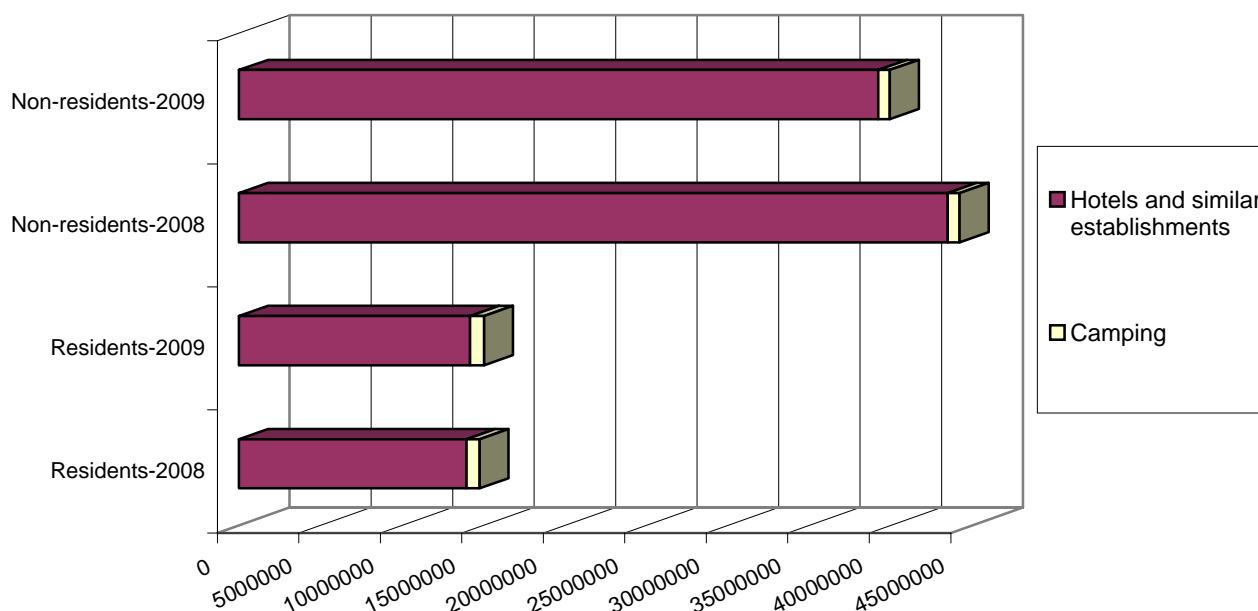
(*) Data for 2009 are provisional and estimated

DIAGRAM 2: Arrivals
at hotels, similar establishments and camping
January-September 2008 / January-September 2009 (*)



(*) Data for 2009 are provisional and estimated

DIAGRAM 3: Nights spent
at hotels, similar establishments and camping
January-September 2008 / January-September 2009 (*)



(*) Data for 2009 are provisional and estimated

EXPLANATORY NOTES

Arrivals and nights spent at hotels, similar establishments and camping	Data of arrivals and nights spent at hotels, similar establishments and camping are collected from a monthly, census survey. Each establishment fills in a questionnaire, for every month that is in operation. It is mandatory for all hotels, similar establishments and camping to participate in the survey.
Legal frame	The survey is conducted according to the council Directive 95/57/EC
Reference unit	<p>Data refer to all establishments (hotels, similar establishments and camping) that are registered at the Hellenic Chamber of Hotels. The Tourism Statistics Section receives the register every three months and from that all the registers and applications that are related to the survey are updated.</p> <p>This survey does not refer to other collective accommodation establishments (rented rooms, agrotouristic establishments etc.), because there is no single, official and complete register for these establishments.</p>
Coverage	The results of the survey refer to about 80% of the total bed-places that are available. The reason why there is no estimation and projection of the results to 100% of the reference population is the fact that there is no information on the exact months that each establishment is in operation. The lack of this information makes it impossible to make this estimation for every month and hence for the total of the year.
Data dissemination	<p>Final, annual data are usually published in July of the following year. The publications refer to a press release and to analytical tables of data.</p> <p>Provisional data for the period January - September are usually published in February of the following year.</p>
Reference period	January - September 2009
Definitions	<p>Resident: a person is considered to be a resident in a country if the person has lived for most of the past year or 12 months in that country (regardless of the citizenship)</p> <p>Non-resident: a person that does not live in the country (regardless of the citizenship)</p> <p>Arrivals: The arrivals at the establishments are calculated for every person separately. The data refer to the total number of persons and not to the total number of room that were occupied. Only the persons that had at least one overnight stay at the establishment are calculated.</p> <p>Nights spent: The nights are calculated for every person separately. The data refer to the total number of nights spent by every person and not to the total number of nights spent at every room.</p> <p>Occupancy of bed-places: The monthly occupancy of bed-places is calculated by taking into account the number of the bed-places that were in operation at each establishment. The rate refers to the occupancy that was accomplished, as opposed to the maximum occupancy that is expected according to the available bed-places.</p> <p>The occupancy of the period is the result of the average occupancy rates of every month of the period, weighted by the bed-places that were in operation at each month.</p>
Methodology	<p>This is a monthly, census survey. The data come from the establishments, by filling in a questionnaire (by paper form or on-line application) for every month that each establishment is in operation. During the year we update regularly the register of the hotels, similar establishments and camping, so that the data refer to the actual number of establishments that are in operation. Also, regular reminders for the submission of the data are sent to the establishments, so that we gather as much data as possible.</p> <p>The provisional data, for the period January - September, come from the estimation of the arrivals and nights spent, taking into account the trend of the data compared to the previous year, based on a comparable sample of the data from the reference year and the previous year.</p>
References	More information on the survey is available on the web-page of the National Statistical Service of Greece (www.statistics.gr). Section: Statistical Themes, Tourism, "Hotels, similar establishments and camping occupancy".