



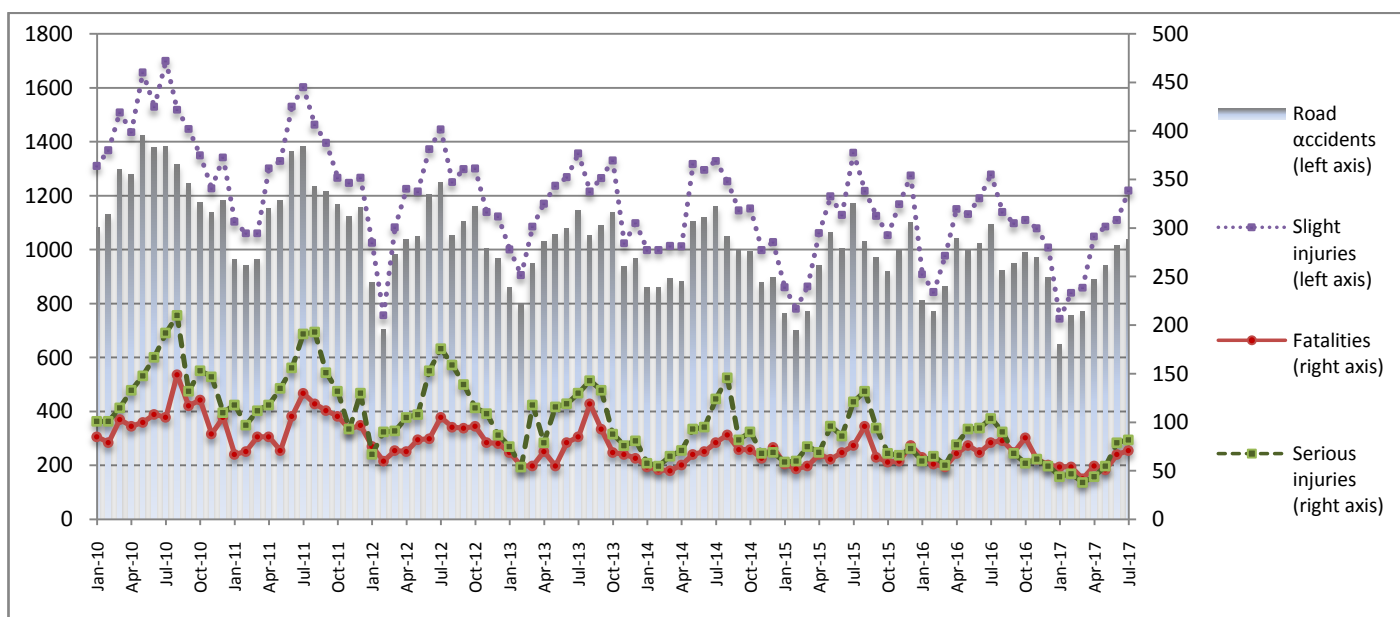
PRESS RELEASE

ROAD ACCIDENTS: July 2017

The Hellenic Statistical Authority (ELSTAT) announces provisional¹ data on Road Accidents for July 2017. In particular, the road traffic accidents which occurred in Greece, resulting in death or injury, decreased by 5.3% in comparison with the corresponding month of 2016 (1,036 road accidents in July 2017, against 1,094 road accidents in July 2016).

The casualties of the injury-causing accidents that occurred in July 2017 were as follows: 71 deaths, 82 serious injuries and 1,219 slight injuries. In contrast, in July 2016 the corresponding figures were: 79 deaths, 104 serious injuries and 1,279 slight injuries. Therefore, road accident casualties in July 2017 decreased by 10.1% for deaths, by 21.2% for serious injuries and by 4.7% for slight injuries.

**Graph 1: Road traffic accidents and casualties,
January 2010-July 2017**



Provisional data: Nov 16 – July 17

Information:

Social Statistics Division

Justice and Public Order Statistics Section

D. Athanasopoulou

Tel: +30 213 1352767

Fax : +30 213 1352764

e-mail: d.athanasopoulou@statistics.gr

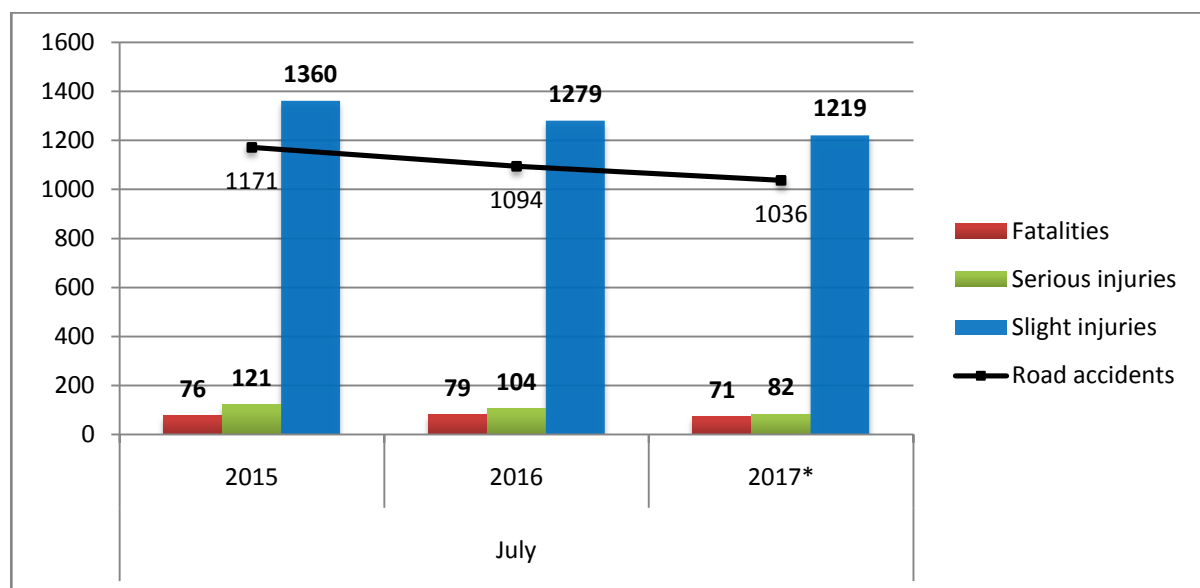
¹ Data for the reference year are provisional until the finalisation of the annual data, which become final 10 months after the end of the reference year. During these 10 months the provisional data are updated on the basis of the data of the Road Accident Forms which are transmitted to ELSTAT by Police Authorities.

Table 1: Road traffic accidents and casualties, July 2015-2017*

	July				
	2015	2016	2016/2015 (%)	2017*	2017*/2016 (%)
Road accidents	1,171	1,094	-6.6%	1,036	-5.3%
Fatalities	76	79	3.9%	71	-10.1%
Total injuries	1,481	1,383	-6.6%	1,301	-5.9%
Serious injuries	121	104	-14.0%	82	-21.2%
Slight injuries	1,360	1,279	-6.0%	1,219	-4.7%

* Provisional data

Graph 2: Road traffic accidents and casualties, July 2015-2017*



* Provisional data

Table 2: Road traffic accidents and casualties, by region and department, July 2016 – 2017*

Region and Department	Road accidents			Fatalities			Serious injuries			Slight injuries		
	2016	2017*	%	2016	2017*	%	2016	2017*	%	2016	2017*	%
Greece Total	1,094	1,036	-5.3%	79	71	-10.1%	104	82	-21.2%	1,279	1,219	-4.7%
Anatoliki Makedonia, Thraki (East Macedonia and Thrace)	47	39	-17.0%	3	6	100.0%	6	3	-50.0%	57	48	-15.8%
Drama	5	5	0.0%	0	1		0	0		7	5	
Evros	9	11	22.2%	1	2		0	1		10	15	
Kavala	13	7	-46.2%	1	0		1	0		13	9	
Xanthi	9	7	-22.2%	0	0		4	1		11	9	
Rodopi	11	9	-18.2%	1	3		1	1		16	10	
Kentriki Makedonia (Central Macedonia)	217	173	-20.3%	13	5	-61.5%	17	9	-47.1%	264	213	-19.3%
Imathia	4	2	-50.0%	1	0		1	0		5	2	
Thessaloniki	172	129	-25.0%	5	3		8	2		204	159	
Kilkis	3	3	0.0%	0	0		0	0		7	3	
Pella	4	7	75.0%	1	1		0	1		3	6	
Pieria	4	4	0.0%	1	0		2	0		6	5	
Serres	5	4	-20.0%	3	0		3	1		3	8	
Chalkidiki	25	24	-4.0%	2	1		3	5		36	30	
Dytiki Makedonia (West Macedonia)	8	7	-12.5%	2	2	0.0%	0	1	-	9	8	-11.1%
Grevena	1	1	0.0%	1	0		0	0		0	1	
Kastoria	2	2	0.0%	0	1		0	0		3	2	
Kozani	5	3	-40.0%	1	1		0	0		6	3	
Florina	0	1	-	0	0		0	1		0	2	
Ipeiros (Epirus)	22	16	-27.3%	6	2	-66.7%	7	4	-42.9%	19	16	-15.8%
Arta	3	3	0.0%	2	1		1	1		0	2	
Thesprotia	8	4	-50.0%	0	1		1	1		8	2	
Ioannina	5	7	40.0%	1	0		2	1		9	10	
Preveza	6	2	-66.7%	3	0		3	1		2	2	
Thessalia (Thessaly)	21	19	-9.5%	1	5	400.0%	6	3	-50.0%	23	16	-30.4%
Karditsa	1	6	500.0%	0	3		0	0		2	4	
Larissa	9	6	-33.3%	0	2		2	0		12	4	
Magnissia	6	4	-33.3%	1	0		2	2		3	4	
Trikala	5	3	-40.0%	0	0		2	1		6	4	
Ionioi Nisoi (Ionian Islands)	35	23	-34.3%	4	4	0.0%	3	3	0.0%	43	26	-39.5%
Zakynthos	6	4	-33.3%	2	2		0	0		6	3	
Kerkyra	18	6	-66.7%	1	0		2	1		22	6	
Kefallinia	7	7	0.0%	0	2		1	2		10	4	
Lefkada	4	6	50.0%	1	0		0	0		5	13	

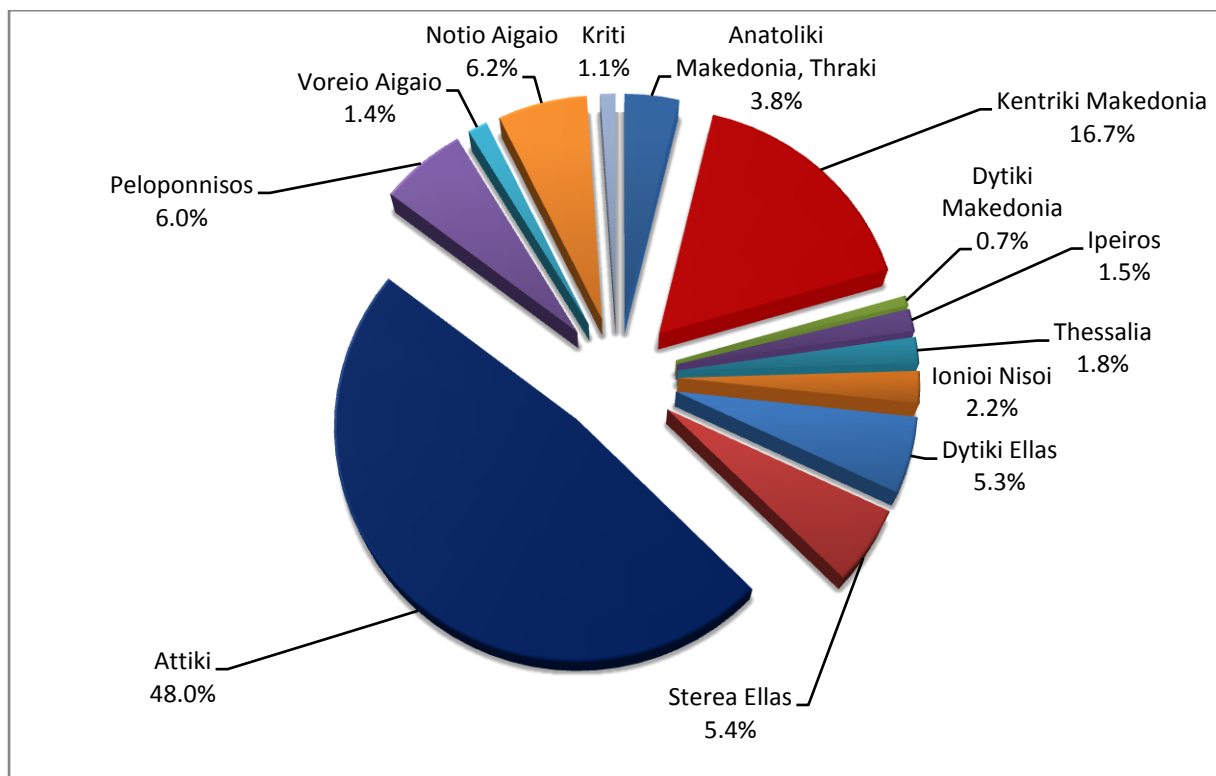
* Provisional data

Table 2: Road traffic accidents and casualties, by region and department, July 2016 – 2017* (Continued)

Region and Department	Road accidents			Fatalities			Serious injuries			Slight injuries		
	2016	2017*	%	2016	2017*	%	2016	2017*	%	2016	2017*	%
Dytiki Ellas (West Greece)	48	55	14.6%	5	4	-20.0%	6	7	16.7%	60	65	8.3%
Etolia & Akarnania	14	23	64.3%	4	4		3	1		22	29	
Achaia	26	26	0.0%	0	0		1	5		30	27	
Ilia	8	6	-25.0%	1	0		2	1		8	9	
Stereia Ellas	57	56	-1.8%	6	8	33.3%	1	6	500.0%	77	78	1.3%
Viotia	7	13	85.7%	0	5		0	1		13	12	
Evia	28	26	-7.1%	4	3		0	3		34	40	
Evrytania	2	0	-100.0%	0	0		0	0		3	0	
Fthiotida	13	12	-7.7%	1	0		1	1		16	14	
Fokida	7	5	-28.6%	1	0		0	1		11	12	
Attiki (Attica)	485	497	2.5%	20	14	-30.0%	18	28	55.6%	562	573	2.0%
Peloponnisos (Peloponnese)	61	62	1.6%	6	12	100.0%	7	6	-14.3%	78	69	-11.5%
Argolida	10	8	-20.0%	1	1		0	1		19	8	
Arkadia	6	10	66.7%	1	0		1	0		7	16	
Korinthia	26	22	-15.4%	1	6		3	4		32	21	
Lakonia	5	9	80.0%	1	1		2	0		3	13	
Messinia	14	13	-7.1%	2	4		1	1		17	11	
Voreio Aigaio (North Aegean)	18	14	-22.2%	2	3	50.0%	3	1	-66.7%	19	16	-15.8%
Lesvos	7	6	-14.3%	2	2		0	1		6	7	
Samos	8	6	-25.0%	0	0		3	0		10	7	
Chios	3	2	-33.3%	0	1		0	0		3	2	
Notio Aigaio (South Aegean)	58	64	10.3%	5	3	-40.0%	25	8	-68.0%	56	78	39.3%
Dodekanissos	21	32	52.4%	4	1		5	3		18	42	
Kyklades	37	32	-13.5%	1	2		20	5		38	36	
Kriti (Crete)	17	11	-35.3%	6	3	-50.0%	5	3	-40.0%	12	13	8.3%
Iraklio	7	1	-85.7%	2	0		4	1		3	3	
Lassithi	3	5	66.7%	1	1		0	1		4	3	
Rethymno	4	0	-100.0%	2	0		0	0		3	0	
Chania	3	5	66.7%	1	2		1	1		2	7	

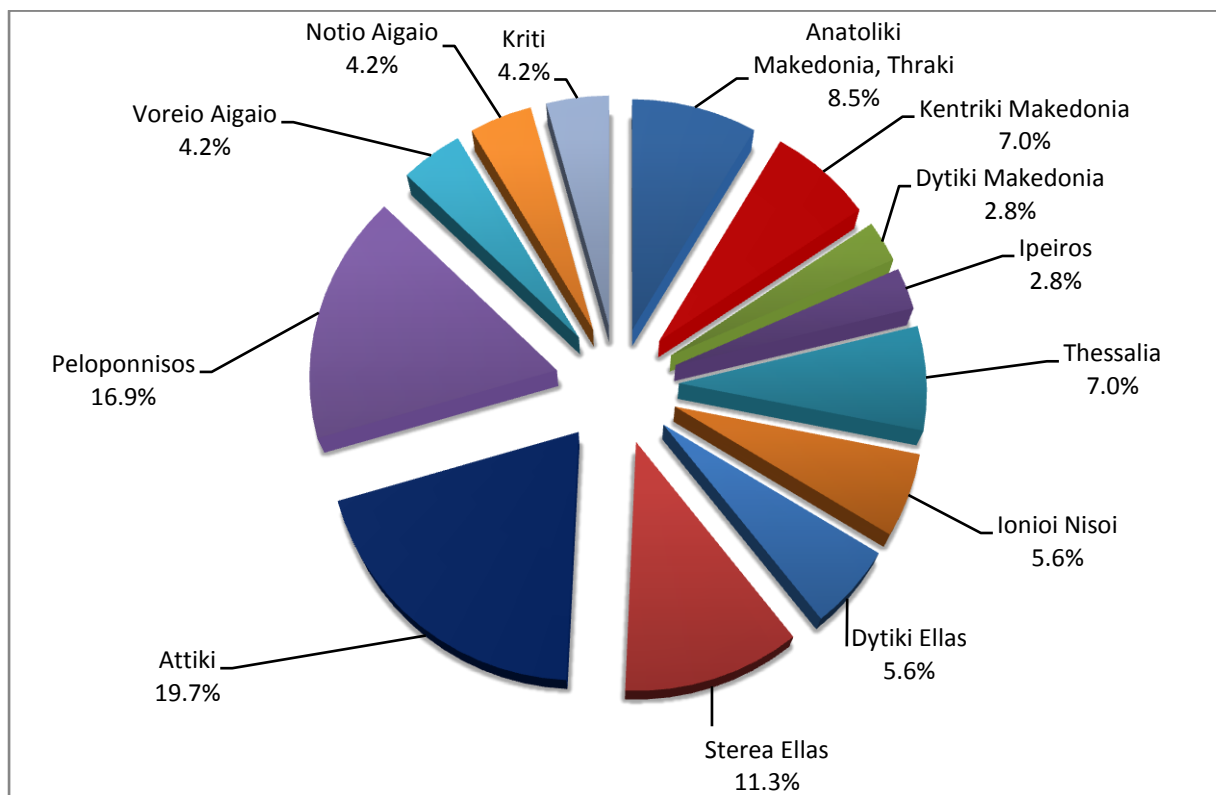
* Provisional data

**Graph 3: Road traffic accidents by region,
July 2017 ***



* Provisional data

**Graph 4: Fatalities by region,
July 2017 ***



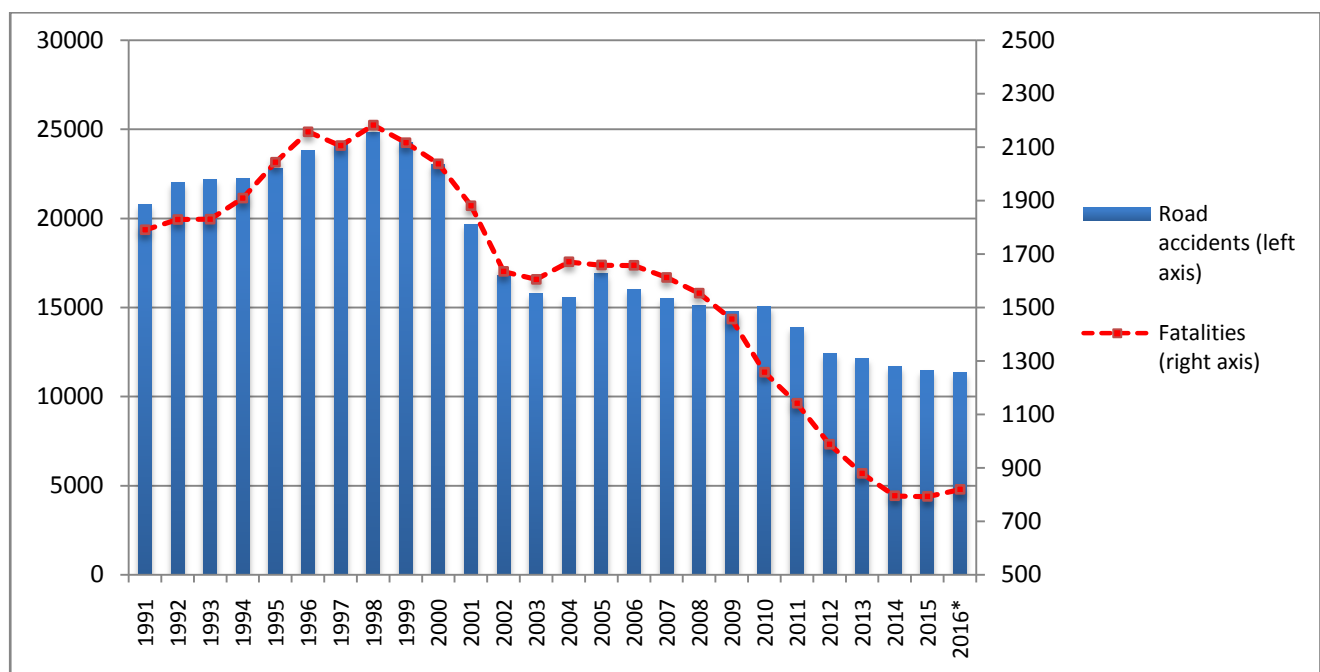
* Provisional data

Table 3: Road Traffic Accidents and casualties for the period January-July 2015, 2016 and 2017*

	2015		2016		2017 *
	January - July	Total year	January - July	Total year *	January - July
Road Accidents	6,416	11,440	6,599	11,327	6,055
Annual Change (%)			2.9%	-1.0%	-8.2%
Fatalities	438	793	467	819	394
Annual Change (%)			6.6%	3.3%	-15.6%
Serious injuries	566	999	549	882	389
Annual Change (%)			-3.0%	-11.7%	-29.1%
Slight injuries	7,255	13,097	7,483	12,918	6,907
Annual Change (%)			3.1%	-1.4%	-7.7%

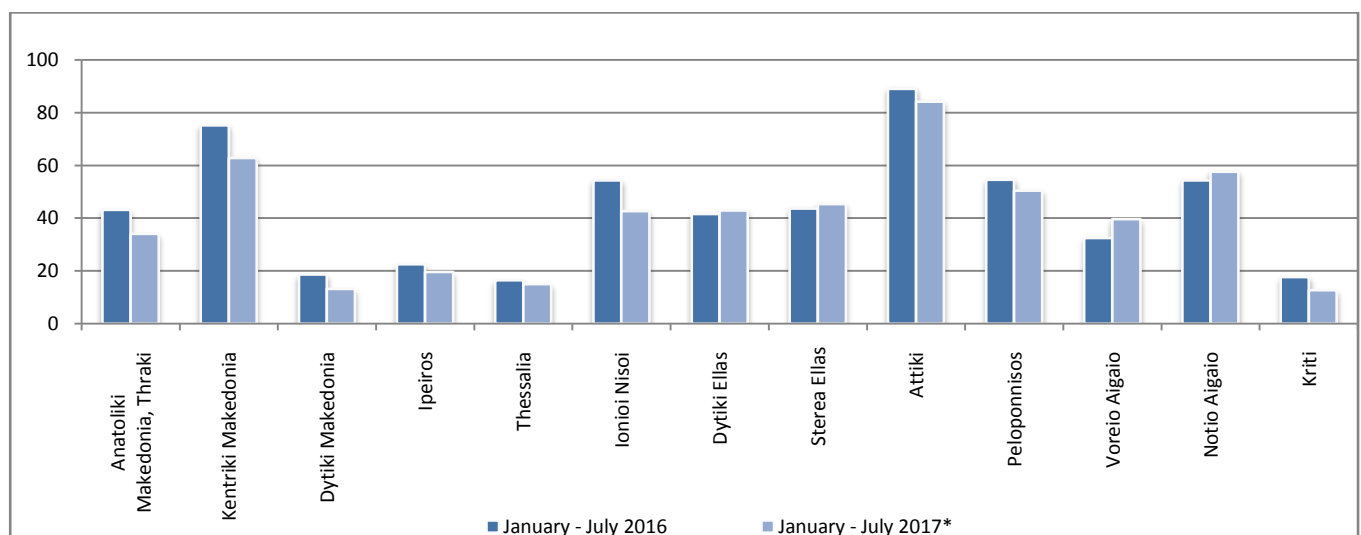
* Provisional data

Graph 5: Total Road traffic accidents and fatalities, 1991-2016*



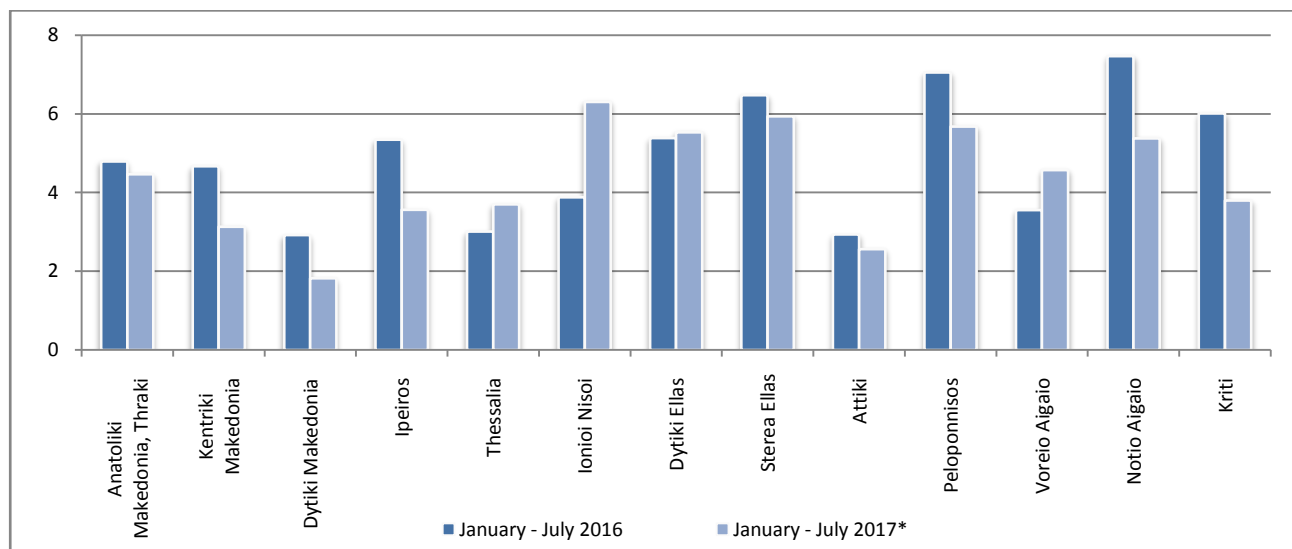
* Provisional data: Nov 16 – Dec 16

Graph 6: Road accidents per 100,000 inhabitants

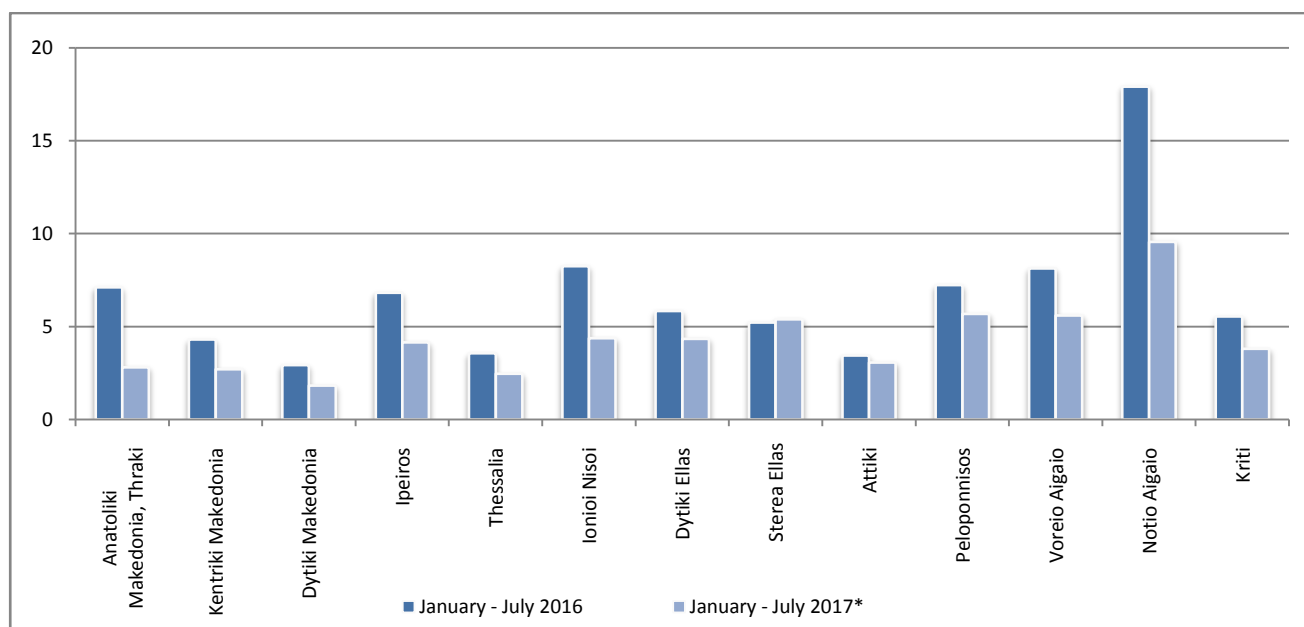


* Provisional data

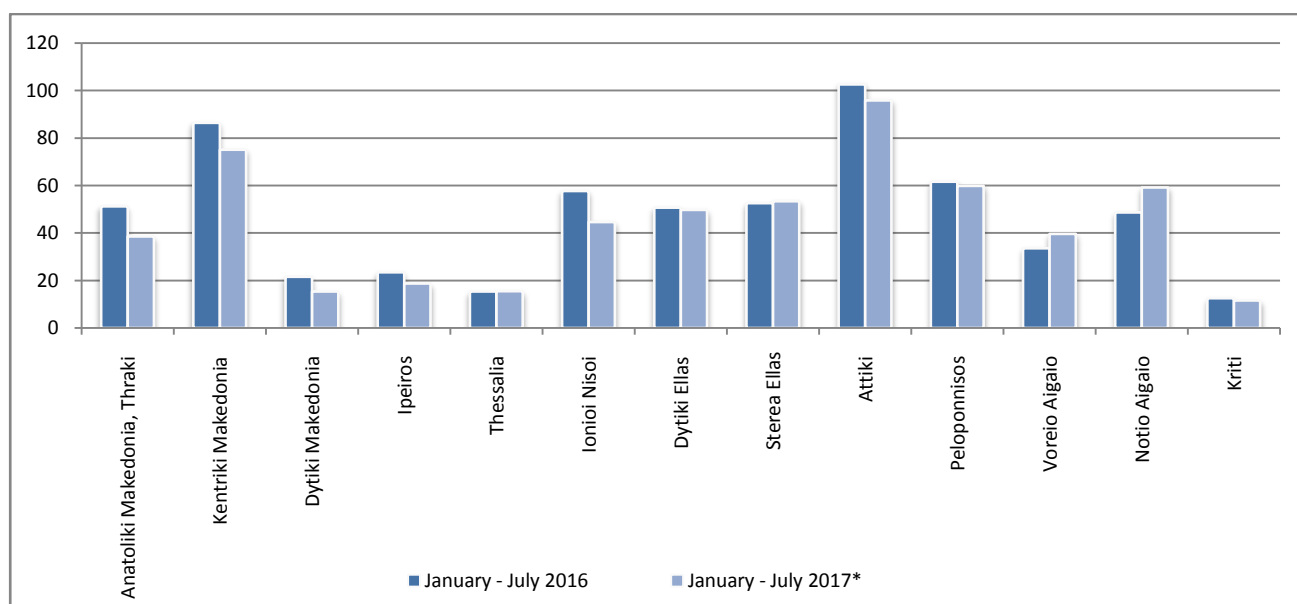
Graph 7: Fatalities per 100,000 inhabitants



Graph 8: Serious injuries per 100,000 inhabitants



Graph 9: Slight injuries per 100,000 inhabitants



* Provisional data

Explanatory Notes

Survey on Road Accidents	<p>The survey on road accidents is conducted on a monthly basis and it records, for each department of Greece and for each month separately, the number of accidents resulting in death or injury, as well as the number of persons injured by categories (drivers, passengers, pedestrians).</p> <p>On a yearly basis, road accidents are further analyzed. The competent agencies for filling in/collecting the forms on road accidents are the local Police Authorities and the local Port Authorities of Greece.</p> <p>The lower level of analysis for the place where an injury road accident occurred is the settlement (oikismos), which is described by a 8-digit geographic code. Data are collected on a monthly basis. The main variables are the following: place of accident, kind of road, casualties, conditions of road surface and type of road.</p>
Legal basis	<p>The Survey on Road Traffic Accidents is governed by Council Decision 93/704 of the European Community.</p>
Reference Period	<p>Monthly.</p>
Availability of Data	<p>Provisional data are available 2 months after the reference month.</p> <p>Final data are available 10 months after the reference year.</p>
National Definitions	<p>Road accident (injury accident): Any accident involving at least one road motor vehicle in motion on a public road or square to which the public has access (excluding yards, industrial sites or vehicle depot of public transport enterprises), resulting in at least one injured or killed person. Accidents with only material damages are not included.</p> <p>Fatality (Death): Any person killed immediately or dying within 30 days as a result of an injury accident (This national definition applies since 01.01.1996)</p> <p>Person injured: Any person who sustained an injury as result of an injury accident, and who normally needs medical treatment.</p> <p>Serious injury: Any person who sustained an injury as result of an injury accident, such as brain damages, mutilation, multiple injuries, which may result in lack of awareness or which are life-threatening.</p> <p>Slight injury: Any person injured who sustained minor and not life-threatening injuries.</p> <p>Vehicle: Include motor vehicles, trolleybuses, motorcycles, bicycles, motorbikes, agricultural and road making machines, animal and hand-drawn vehicles. Railway vehicles are excluded, unless the road accident involves at least one of the aforementioned types of vehicles and therefore, railway vehicles are considered vehicles.</p>
Methodology	<p>The forms of the survey are filled in by the local Police Authorities and the local Port Authorities as well.</p>
References	<p>More information about road accidents is available on ELSTAT's website and more specifically at the link: www.statistics.gr > Population & Social Conditions > Accidents > Road Traffic Accidents.</p> <p>It should be noted that previous press releases and time series are available on ELSTAT's website: www.statistics.gr</p>