



HELLENIC REPUBLIC



HELLENIC STATISTICAL AUTHORITY

Piraeus, 31 May 2013

PRESS RELEASE

ROAD ACCIDENTS: March 2013

In March 2013 the road traffic accidents, which occurred in Greece resulting in injured or killed persons, decreased by 3.4 % in comparison with the corresponding month of 2012 (936 road accidents in March 2013 against 969 road accidents in March 2012).

Among the casualties of the injury accidents, which occurred, 56 persons were killed, 116 persons were seriously injured and 1,050 persons were slightly injured. In contrast, in March 2012 the corresponding figures were: 71 persons killed, 96 seriously injured and 1,042 slightly injured. Therefore, road accident casualties in March 2013 recorded decrease by 21.1% for persons killed and increase by 20.8% for persons seriously injured and by 0.8% for persons slightly injured.



Contact:
Social Statistics Division
Justice and Public Order Statistics Section

K. Theodoraki
Tel : +30 213 1352771
Fax : +30 213 1352764

Table 1. Road accidents and casualties, by region (NUTS 2) and department - March 2012 and 2013

Region and Department	Road Accidents			Killed			Seriously Injured			Slightly Injured		
	2012	2013	%	2012	2013	%	2012	2013	%	2012	2013	%
Greece, total	969	936	-3.4%	71	56	-21.1%	96	116	20.8%	1,042	1,050	0.8%
Anatoliki Makedonia, Thraki (East Macedonia and Thrace)	28	36	28.6%	5	2	-60.0%	7	5	-28.6%	35	41	17.1%
Drama	8	5	-37.5%	1	0		1	0		11	5	
Evros	5	11	120.0%	2	1		0	0		4	13	
Kavala	4	5	25.0%	0	0		1	2		6	4	
Xanthi	4	9	125.0%	0	0		1	2		9	14	
Rodopi	7	6	-14.3%	2	1		4	1		5	5	
Kentriki Makedonia (Central Macedonia)	175	161	-8.0%	16	7	-56.3%	18	8	-55.6%	180	199	10.6%
Imathia	17	6	-64.7%	2	0		2	1		19	12	
Thessaloniki	135	137	1.5%	10	5		11	4		135	169	
Kilkis	8	4	-50.0%	1	0		1	0		11	4	
Pella	3	5	66.7%	0	1		0	0		7	8	
Pieria	2	3	50.0%	0	0		0	3		2	1	
Serres	5	2	-60.0%	2	0		3	0		1	2	
Chalkidiki	5	4	-20.0%	1	1		1	0		5	3	
Dytiki Makedonia (West Macedonia)	21	15	-28.6%	6	0	-100.0%	3	2	-33.3%	19	17	-10.5%
Grevena	1	1	0.0%	0	0		0	0		1	1	
Kastoria	1	2	100.0%	1	0		0	0		0	2	
Kozani	8	12	50.0%	3	0		1	2		7	14	
Florina	11	0	-100.0%	2	0		2	0		11	0	
Ipeiros (Epirus)	11	12	9.1%	4	2	-50.0%	3	3	0.0%	10	17	70.0%
Arta	0	3	-	0	0		0	0		0	3	
Thesprotia	4	2	-50.0%	0	0		1	0		4	5	
Ioannina	5	4	-20.0%	3	0		1	1		5	4	
Preveza	2	3	50.0%	1	2		1	2		1	5	
Thessalia (Thessaly)	29	22	-24.1%	3	5	66.7%	8	4	-50.0%	28	23	-17.9%
Karditsa	4	6	50.0%	1	1		1	1		7	8	
Larisa	12	13	8.3%	1	3		5	2		9	12	
Magnisia	9	0	-100.0%	0	0		1	0		9	0	
Trikala	4	3	-25.0%	1	1		1	1		3	3	
Ionioi Nisoi (Ionian Islands)	6	5	-16.7%	3	2	-33.3%	0	3	-	7	4	-42.9%
Zakynthos	1	0	-100.0%	1	0		0	0		0	0	
Kerkyra	3	2	-33.3%	0	0		0	1		6	1	
Kefallinia	1	2	100.0%	1	1		0	2		0	3	
Lefkada	1	1	0.0%	1	1		0	0		1	0	

Table 1. Continued

Region and Department	Road Accidents			Killed			Seriously Injured			Slightly Injured		
	2012	2013	%	2012	2013	%	2012	2013	%	2012	2013	%
Dytiki Ellas (West Greece)	18	37	105.6%	1	5	400.0%	6	13	116.7%	19	35	84.2%
Aitolia, Akarnania	7	15	114.3%	0	2		1	4		9	17	
Achaia	7	13	85.7%	0	1		4	6		6	12	
Ileia	4	9	125.0%	1	2		1	3		4	6	
Stereia Ellas	39	40	2.6%	7	5	-28.6%	8	11	37.5%	41	36	-12.2%
Voiotia	7	8	14.3%	2	2		3	0		7	8	
Evvoia	17	11	-35.3%	3	2		2	5		18	6	
Evrytania	0	2	-	0	1		0	0		0	1	
Fthiotida	11	13	18.2%	2	0		2	6		11	14	
Fokida	4	6	50.0%	0	0		1	0		5	7	
Attiki (Attica)	553	538	-2.7%	11	23	109.1%	20	47	135.0%	626	601	-4.0%
Peloponnisos (Peloponnese)	33	32	-3.0%	5	1	-80.0%	3	9	200.0%	34	44	29.4%
Argolida	8	7	-12.5%	1	0		0	1		12	9	
Arkadia	5	5	0.0%	0	0		0	0		6	13	
Korinthia	10	9	-10.0%	2	1		2	4		7	13	
Lakonia	4	3	-25.0%	0	0		1	3		5	1	
Messinia	6	8	33.3%	2	0		0	1		4	8	
Voreio Aigaio (North Aegean)	3	6	100.0%	0	1	-	0	2	-	4	3	-25.0%
Lesvos	3	4	33.3%	0	1		0	2		4	1	
Samos	0	0	0.0%	0	0		0	0		0	0	
Chios	0	2	-	0	0		0	0		0	2	
Notio Aigaio (South Aegean)	30	15	-50.0%	3	1	-66.7%	9	3	-66.7%	21	19	-9.5%
Dodekanisos	17	8	-52.9%	2	1		4	2		13	11	
Kyklades	13	7	-46.2%	1	0		5	1		8	8	
Kriti (Crete)	23	17	-26.1%	7	2	-71.4%	11	6	-45.5%	18	11	-38.9%
Irakleio	8	7	-12.5%	4	1		4	3		10	4	
Lasithi	3	4	33.3%	1	1		2	2		1	2	
Rethymni	4	2	-50.0%	0	0		1	0		4	2	
Chania	8	4	-50.0%	2	0		4	1		3	3	

Table 2. Road accidents and casualties, for the period January - March of the years 2011, 2012 and 2013

Period:	January - March			Percentage Change	
	2011	2012	2013	2012/2011	2013/2012
Road accidents	2,858	2,517	2,570	-11.9	2.1
Killed	219	211	178	-3.7	-15.6
Seriously injured	330	262	254	-20.6	-3.1
Slightly injured	3,168	2,754	2,875	-13.1	4.4
Casualties-Total	3,498	3,016	3,129	-13.8	3.7

Diagram 1: Road accidents per 100,000 inhabitants

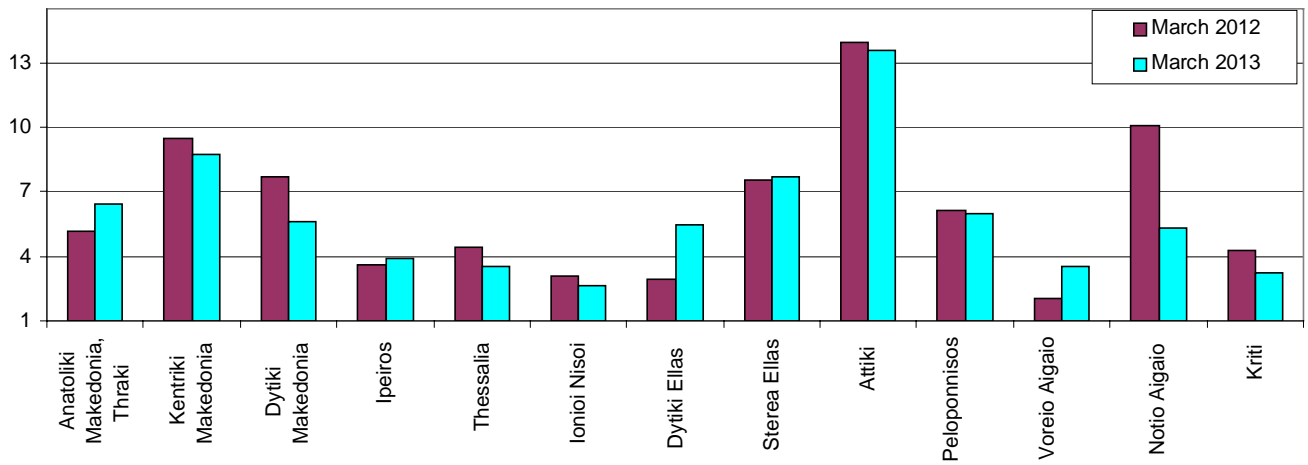


Diagram 2: Persons killed per 100,000 inhabitants

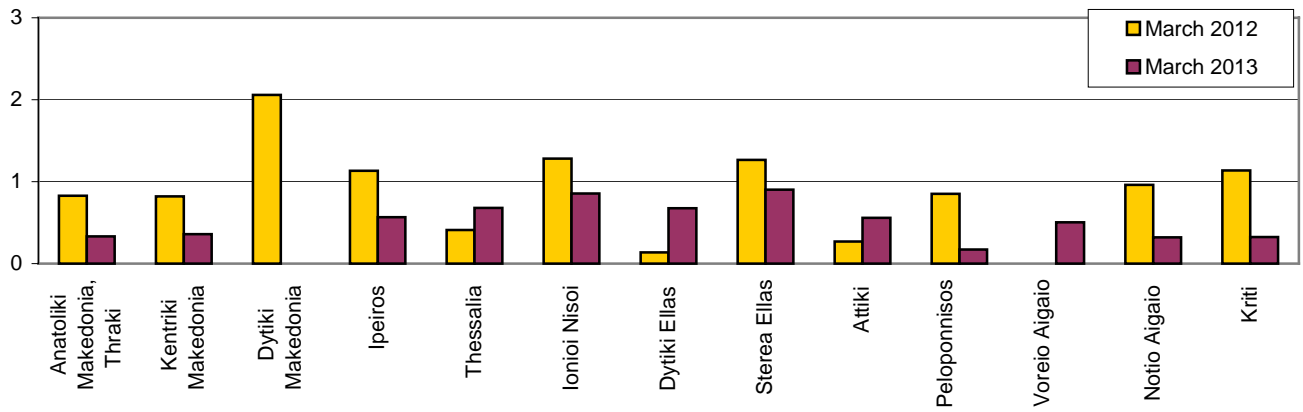


Diagram 3: Persons seriously injured per 100,000 inhabitants

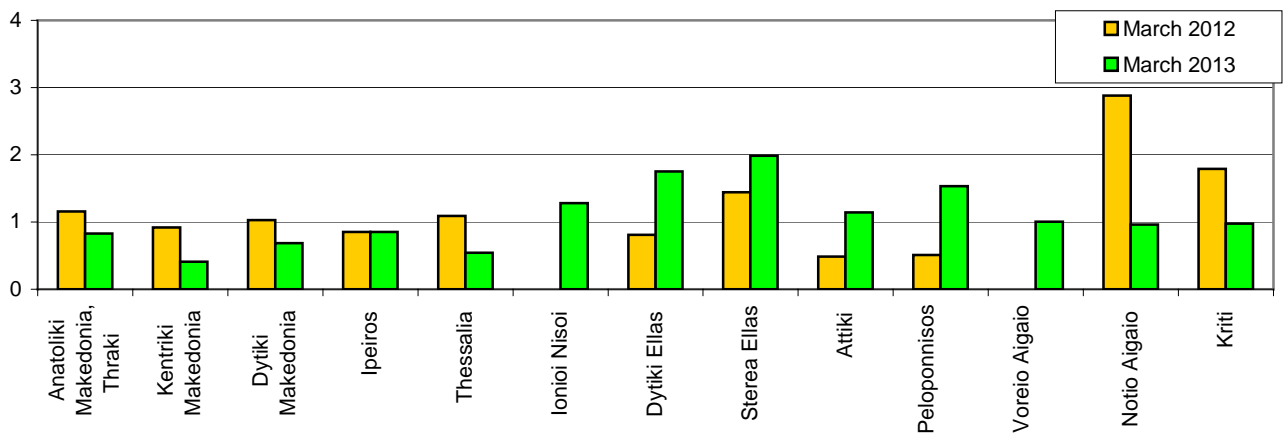
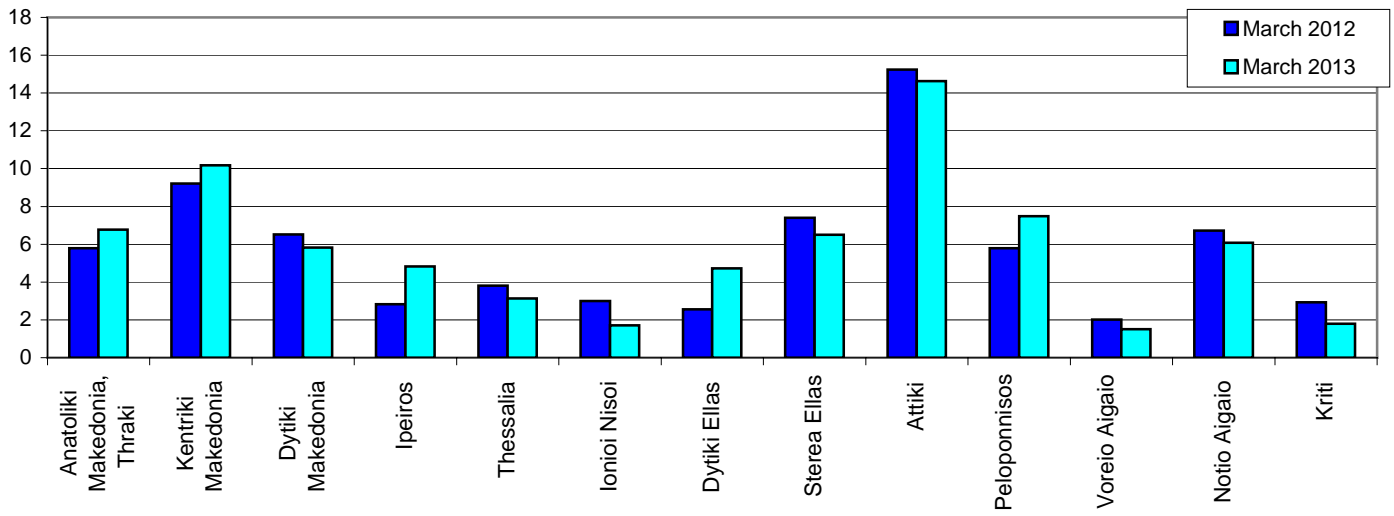


Diagram 4: Persons slightly injured per 100,000 inhabitants



EXPLANATORY NOTES

Survey on Road Accidents	<p>The survey on road accidents is conducted on a monthly basis and it records, for each Department of Greece and for each month separately, the number of accidents by fatal and/or non-fatal accident, as well as the number of persons injured by categories (drivers, passengers, pedestrians). On a yearly basis, road accidents are further analyzed.</p> <p>The competent agencies for filling in/collecting the questionnaires on road accidents are the local Police Authorities and the local Port Authorities of Greece.</p> <p>The lower level of analysis for the place where an injury road accident occurred is the settlement (oikismos), which is described by a 8-digit geographic code. Data are collected on a monthly basis.</p> <p>The main variables are the following: place of accident, kind of road, casualties, conditions of road surface and type of road.</p>
Legal basis	<p>The Survey on Road Traffic Accidents is governed by Council Decision 93/704/EC.</p>
Reference Period	<p>01.03.2013 to 31.03.2013</p>
Availability of Results	<p>Provisional data: 2 months after the accident Final data: 1 year after the reference year</p>
National Definitions	<p>Road accident (injury accident): Any accident involving at least one road motor vehicle in motion on a public road or square to which the public has access (excluding yards, industrial sites or vehicle depot of public transport enterprises), resulting in at least one injured or killed person. Accidents with only material damages are not included.</p> <p>Person killed: Any person killed immediately or dying within 30 days as a result of an injury accident (This national definition applies since 01.01.1996)</p> <p>Person injured: Any person who sustained an injury as result of an injury accident, and who normally needs medical treatment.</p> <p>Seriously injured: Any person who sustained an injury as result of an injury accident, such as brain damages, mutilation, multiple injuries, which may result in lack of awareness or which are life-threatening.</p> <p>Slightly injured: Any person injured who sustained minor and not life-threatening injuries.</p> <p>Vehicle: For the purposes of road accidents statistics, vehicles include motor vehicles, trolleybuses, motorcycles, bicycles, motorbikes, agricultural and road making machines, animal and hand-drawn vehicles. Railway vehicles are excluded, unless the road accident involves one of the aforementioned types of vehicles and therefore, railway vehicles are considered vehicles.</p>
Methodology	<p>The questionnaires of the survey are filled in by the local Police Authorities and the local Port Authorities as well.</p>
References	<p>More information about road accidents is available on ELSTAT's website and more specifically at the link: www.statistics.gr > Statistical Themes > Health – Social protection > Accidents > Road Traffic Accidents.</p> <p>It should be noted that previous press releases and time series are available on ELSTAT's website: www.statistics.gr</p>