



HELLENIC REPUBLIC



HELLENIC STATISTICAL AUTHORITY

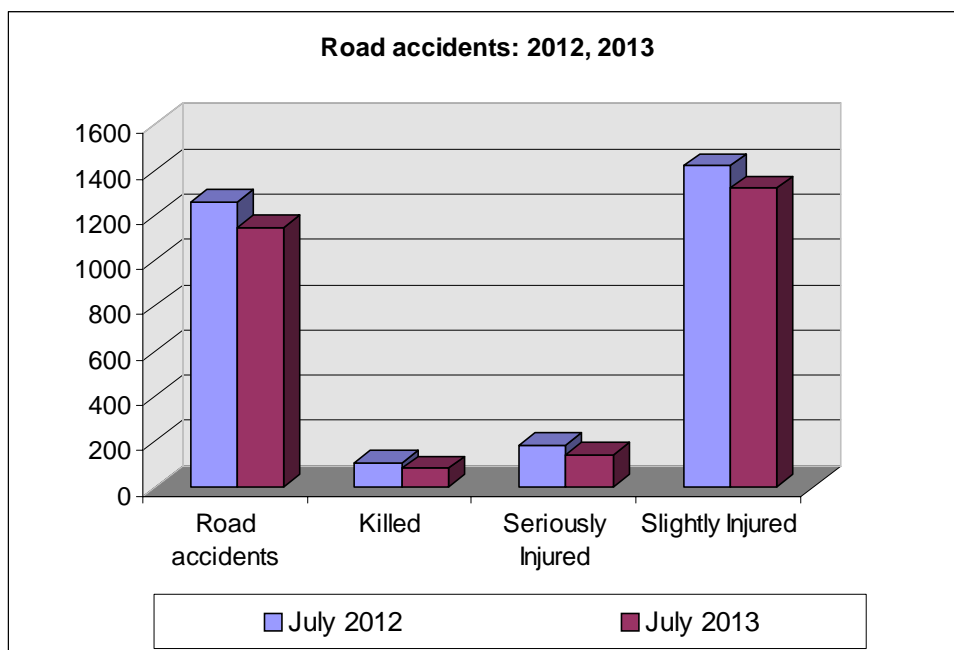
Piraeus, 30 September 2013

PRESS RELEASE

ROAD ACCIDENTS: July 2013

In July 2013 the road traffic accidents, which occurred in Greece resulting in injured or killed persons, decreased by 8.7 % in comparison with the corresponding month of 2012 (1,149 road accidents in July 2013 against 1,259 road accidents in July 2012).

Among the casualties of the injury-causing accidents that occurred in July 2013, 82 persons were killed, 143 persons were seriously injured and 1,319 persons were slightly injured. In contrast, in July 2012 the corresponding figures were: 105 persons killed, 183 seriously injured and 1,419 slightly injured. Therefore, road accident casualties in July 2013 recorded a decrease by 21.9% for persons killed, by 21.9% for persons seriously injured and by 7% for persons slightly injured.



Contact:
Social Statistics Division
Justice and Public Order Statistics Section

K. Theodoraki
Tel : +30 213 1352771
Fax : +30 213 1352764

Table 1. Road accidents and casualties, by region (NUTS 2) and department - July 2012 and 2013

Region and Department	Road Accidents			Killed			Seriously Injured			Slightly Injured		
	2012	2013	%	2012	2013	%	2012	2013	%	2012	2013	%
Greece, total	1,259	1,149	-8.7%	105	82	-21.9%	183	143	-21.9%	1,419	1,319	-7.0%
Anatoliki Makedonia, Thraki (East Macedonia and Thrace)	57	45	-21.1%	7	4	-42.9%	15	9	-40.0%	50	48	-4.0%
Drama	11	5	-54.5%	1	0		2	1		10	6	
Evros	13	5	-61.5%	2	1		3	0		13	5	
Kavala	16	14	-12.5%	2	0		5	3		12	16	
Xanthi	9	12	33.3%	1	1		1	4		11	13	
Rodopi	8	9	12.5%	1	2		4	1		4	8	
Kentriki Makedonia (Central Macedonia)	204	244	19.6%	14	20	42.9%	26	10	-61.5%	238	292	22.7%
Imathia	13	14	7.7%	0	3		5	0		14	19	
Thessaloniki	139	184	32.4%	12	7		7	7		170	222	
Kilkis	7	5	-28.6%	1	0		1	0		7	6	
Pella	4	5	25.0%	0	2		1	1		4	4	
Pieria	5	9	80.0%	0	3		0	0		10	10	
Serres	11	8	-27.3%	0	2		3	1		13	10	
Chalkidiki	25	19	-24.0%	1	3		9	1		20	21	
Dytiki Makedonia (West Macedonia)	19	13	-31.6%	2	2	0.0%	4	2	-50.0%	21	26	23.8%
Grevena	1	3	200.0%	0	0		0	0		1	9	
Kastoria	4	4	0.0%	0	1		0	0		6	3	
Kozani	12	5	-58.3%	2	1		2	0		13	13	
Florina	2	1	-50.0%	0	0		2	2		1	1	
Ipeiros (Epirus)	22	22	0.0%	3	5	66.7%	9	12	33.3%	25	19	-24.0%
Arta	1	2	100.0%	1	1		0	2		1	1	
Thesprotia	6	10	66.7%	0	1		1	5		6	13	
Ioannina	8	6	-25.0%	0	2		3	2		7	4	
Preveza	7	4	-42.9%	2	1		5	3		11	1	
Thessalia (Thessaly)	40	37	-7.5%	6	7	16.7%	9	5	-44.4%	44	36	-18.2%
Karditsa	10	10	0.0%	0	2		1	2		12	8	
Larisa	12	16	33.3%	3	2		2	2		16	19	
Magnisia	9	8	-11.1%	1	2		3	1		6	6	
Trikala	9	3	-66.7%	2	1		3	0		10	3	
Ionioi Nisoi (Ionian Islands)	38	34	-10.5%	3	2	-33.3%	8	7	-12.5%	37	38	2.7%
Zakynthos	10	4	-60.0%	1	0		2	0		8	7	
Kerkyra	16	19	18.8%	2	0		5	6		14	22	
Kefallinia	5	2	-60.0%	0	1		1	0		5	1	
Lefkada	7	9	28.6%	0	1		0	1		10	8	

Table 1. Continued

Region and Department	Road Accidents			Killed			Seriously Injured			Slightly Injured		
	2012	2013	%	2012	2013	%	2012	2013	%	2012	2013	%
Dytiki Ellas (West Greece)	66	54	-18.2%	15	8	-46.7%	18	3	-83.3%	67	62	-7.5%
Aitolia, Akarnania	22	20	-9.1%	6	5		9	0		16	26	
Achaia	25	22	-12.0%	4	1		6	2		29	26	
Ileia	19	12	-36.8%	5	2		3	1		22	10	
Sterea Ellas	50	55	10.0%	2	6	200.0%	6	16	166.7%	66	72	9.1%
Voiotia	12	10	-16.7%	0	0		0	2		17	15	
Evvoia	15	25	66.7%	1	5		2	12		15	22	
Evrytania	0	2	-	0	0		0	0		0	4	
Fthiotida	16	14	-12.5%	1	0		2	2		23	28	
Fokida	7	4	-42.9%	0	1		2	0		11	3	
Attiki (Attica)	580	484	-16.6%	24	12	-50.0%	37	22	-40.5%	682	568	-16.7%
Peloponnisos (Peloponnese)	78	70	-10.3%	10	8	-20.0%	16	25	56.3%	81	76	-6.2%
Argolida	18	17	-5.6%	1	3		2	9		20	9	
Arkadia	16	14	-12.5%	5	2		1	2		22	24	
Korinthia	14	23	64.3%	1	0		8	7		10	27	
Lakonia	14	3	-78.6%	1	0		2	1		16	3	
Messinia	16	13	-18.8%	2	3		3	6		13	13	
Voreio Aigaio (North Aegean)	18	16	-11.1%	4	1	-75.0%	2	2	0.0%	27	20	-25.9%
Lesvos	9	11	22.2%	0	0		0	1		12	15	
Samos	3	1	-66.7%	1	1		0	0		2	0	
Chios	6	4	-33.3%	3	0		2	1		13	5	
Notio Aigaio (South Aegean)	56	50	-10.7%	9	2	-77.8%	21	22	4.8%	52	47	-9.6%
Dodekanisos	34	22	-35.3%	8	0		6	9		36	18	
Kyklades	22	28	27.3%	1	2		15	13		16	29	
Kriti (Crete)	31	25	-19.4%	6	5	-16.7%	12	8	-33.3%	29	15	-48.3%
Irakleio	12	11	-8.3%	3	2		7	6		9	6	
Lasithi	9	3	-66.7%	2	1		2	0		8	3	
Rethymni	3	4	33.3%	0	2		1	1		3	1	
Chania	7	7	0.0%	1	0		2	1		9	5	

Table 2. Road accidents and casualties, for the period January - July of the years 2011, 2012 and 2013

Period:	January - July			Percentage Change	
	2011	2012	2013	2012/2011	2013/2012
Road accidents	7,898	6,999	6,876	-11.4	-1.8
Killed	590	545	460	-7.6	-15.6
Seriously injured	950	801	754	-15.7	-5.9
Slightly injured	8,841	7,862	7,704	-11.1	-2.0
Casualties-Total	9,791	8,663	8,458	-11.5	-2.4

Diagram 1: Road accidents per 100,000 inhabitants

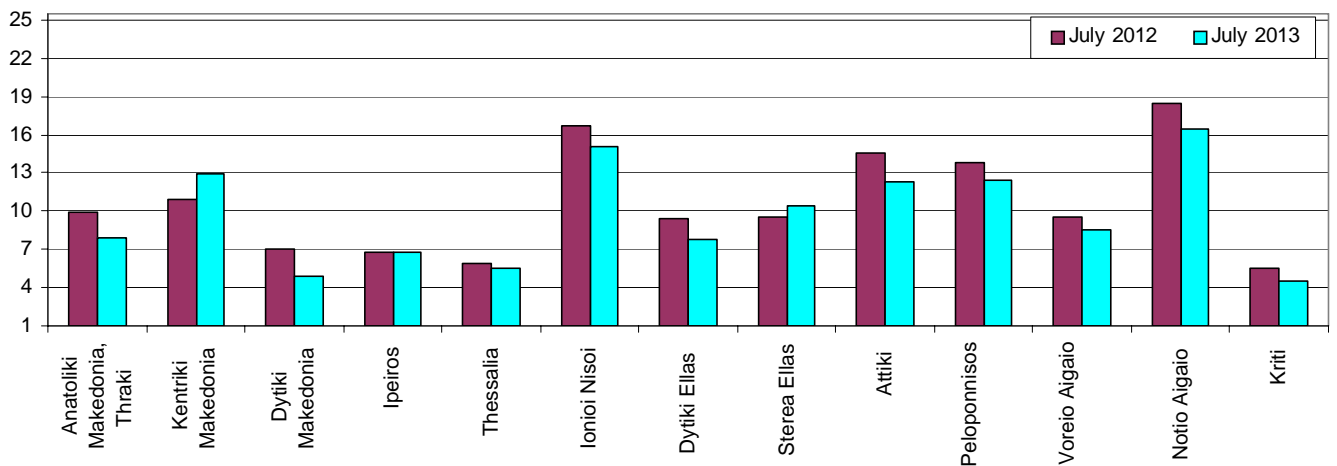


Diagram 2: Persons killed per 100,000 inhabitants

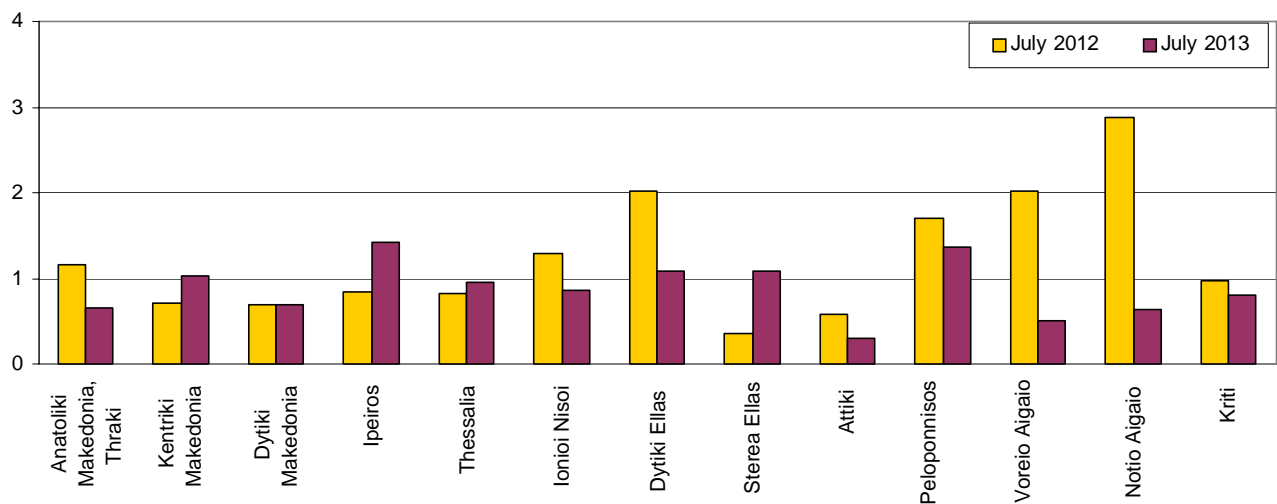


Diagram 3: Persons seriously injured per 100,000 inhabitants

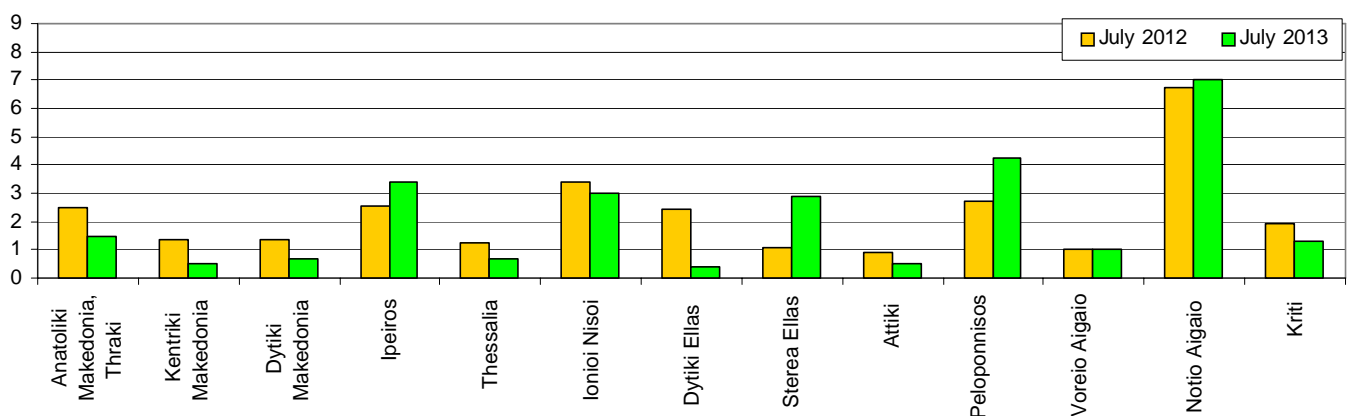
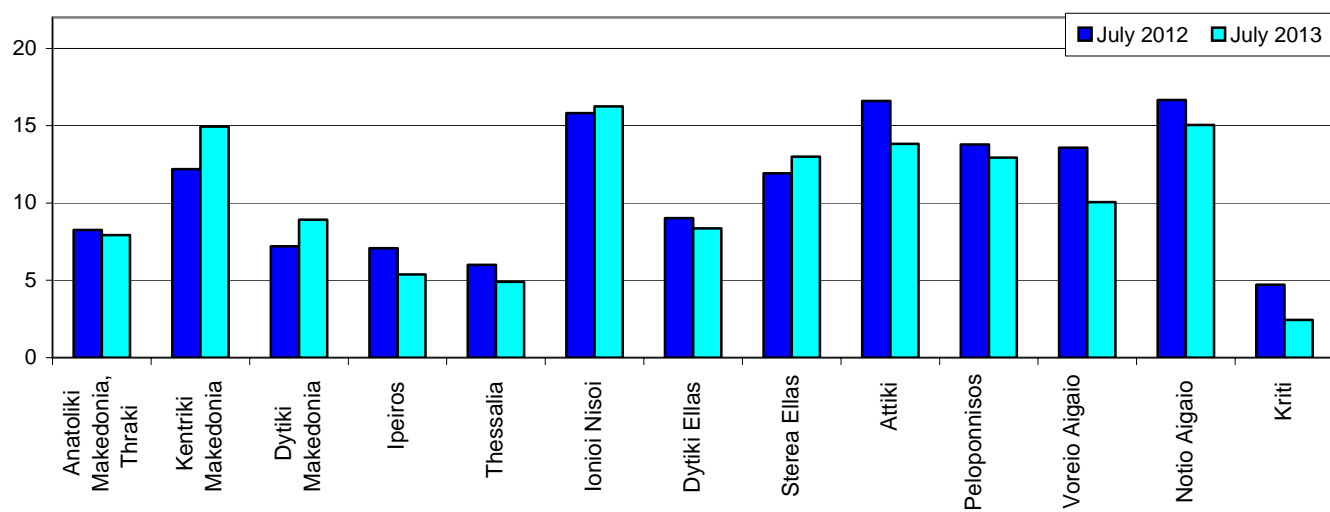


Diagram 4: Persons slightly injured per 100,000 inhabitants



EXPLANATORY NOTES

Survey on Road Accidents

The survey on road accidents is conducted on a monthly basis and it records, for each Department of Greece and for each month separately, the number of accidents by fatal and/or non-fatal accident, as well as the number of persons injured by categories (drivers, passengers, pedestrians). On a yearly basis, road accidents are further analyzed.

The competent agencies for filling in/collecting the questionnaires on road accidents are the local Police Authorities and the local Port Authorities of Greece.

The lower level of analysis for the place where an injury road accident occurred is the settlement (oikismos), which is described by a 8-digit geographic code. Data are collected on a monthly basis.

The main variables are the following: place of accident, kind of road, casualties, conditions of road surface and type of road.

Legal basis

The Survey on Road Traffic Accidents is governed by Council Decision 93/704/EC.

Reference Period

01.07.2013 to 31.07.2013

Availability of Results

Provisional data: 2 months after the accident
Final data: 1 year after the reference year

National Definitions

Road accident (injury accident): Any accident involving at least one road motor vehicle in motion on a public road or square to which the public has access (excluding yards, industrial sites or vehicle depot of public transport enterprises), resulting in at least one injured or killed person. Accidents with only material damages are not included.

Person killed: Any person killed immediately or dying within 30 days as a result of an injury accident (This national definition applies since 01.01.1996)

Person injured: Any person who sustained an injury as result of an injury accident, and who normally needs medical treatment.

Seriously injured: Any person who sustained an injury as result of an injury accident, such as brain damages, mutilation, multiple injuries, which July result in lack of awareness or which are life-threatening.

Slightly injured: Any person injured who sustained minor and not life-threatening injuries.

Vehicle: For the purposes of road accidents statistics, vehicles include motor vehicles, trolleybuses, motorcycles, bicycles, motorbikes, agricultural and road making machines, animal and hand-drawn vehicles. Railway vehicles are excluded, unless the road accident involves one of the aforementioned types of vehicles and therefore, railway vehicles are considered vehicles.

Methodology

The questionnaires of the survey are filled in by the local Police Authorities and the local Port Authorities as well.

References

More information about road accidents is available on ELSTAT's website and more specifically at the link: www.statistics.gr > Statistical Themes > Health – Social protection > Accidents > Road Traffic Accidents.

It should be noted that previous press releases and time series are available on ELSTAT's website: www.statistics.gr