



HELLENIC REPUBLIC



HELLENIC STATISTICAL AUTHORITY

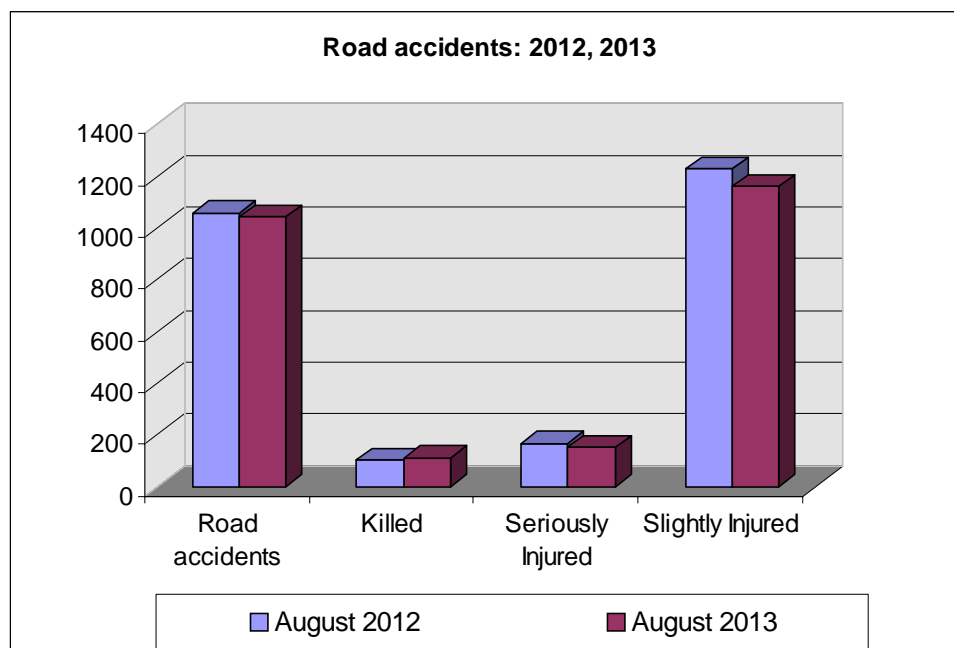
Piraeus, 31 October 2013

PRESS RELEASE

ROAD ACCIDENTS: August 2013

In August 2013 the road traffic accidents, which occurred in Greece resulting in injured or killed persons, decreased by 1.2 % in comparison with the corresponding month of 2012 (1,045 road accidents in August 2013 against 1,058 road accidents in August 2012).

Among the casualties of the injury-causing accidents that occurred in August 2013, 113 persons were killed, 153 persons were seriously injured and 1,161 persons were slightly injured. In contrast, in August 2012 the corresponding figures were: 103 persons killed, 166 seriously injured and 1,230 slightly injured. Therefore, road accident casualties in August 2013 recorded an increase by 9.7% for persons killed and a decrease by 7.8% for persons seriously injured and by 5.6% for persons slightly injured.



Contact:
Social Statistics Division
Justice and Public Order Statistics Section

K. Theodoraki
Tel : +30 213 1352771
Fax : +30 213 1352764

Table 1. Road accidents and casualties, by region (NUTS 2) and department - August 2012 and 2013

Region and Department	Road Accidents			Killed			Seriously Injured			Slightly Injured		
	2012	2013	%	2012	2013	%	2012	2013	%	2012	2013	%
Greece, total	1,058	1,045	-1.2%	103	113	9.7%	166	153	-7.8%	1,230	1,161	-5.6%
Anatoliki Makedonia, Thraki (East Macedonia and Thrace)	69	61	-11.6%	7	9	28.6%	8	15	87.5%	82	66	-19.5%
Drama	16	8	-50.0%	2	1		2	2		20	7	
Evros	11	12	9.1%	2	2		1	4		10	10	
Kavala	22	19	-13.6%	2	4		3	6		31	17	
Xanthi	13	10	-23.1%	1	1		1	1		14	14	
Rodopi	7	12	71.4%	0	1		1	2		7	18	
Kentriki Makedonia (Central Macedonia)	161	219	36.0%	11	21	90.9%	18	20	11.1%	204	255	25.0%
Imathia	8	10	25.0%	0	1		1	3		10	8	
Thessaloniki	96	149	55.2%	4	8		5	3		119	181	
Kilkis	10	3	-70.0%	2	2		1	0		14	3	
Pella	6	9	50.0%	0	6		4	2		5	7	
Pieria	9	14	55.6%	1	1		1	2		17	13	
Serres	14	9	-35.7%	2	0		5	4		16	11	
Chalkidiki	18	25	38.9%	2	3		1	6		23	32	
Dytiki Makedonia (West Macedonia)	17	7	-58.8%	2	5	150.0%	5	0	-100.0%	25	6	-76.0%
Grevena	3	1	-66.7%	1	1		0	0		5	0	
Kastoria	2	2	0.0%	0	2		2	0		1	2	
Kozani	10	3	-70.0%	0	1		3	0		15	3	
Florina	2	1	-50.0%	1	1		0	0		4	1	
Ipeiros (Epirus)	22	13	-40.9%	11	9	-18.2%	17	6	-64.7%	20	9	-55.0%
Arta	4	3	-25.0%	2	6		2	2		7	0	
Thesprotia	9	4	-55.6%	1	0		2	1		7	3	
Ioannina	8	4	-50.0%	7	2		13	1		6	3	
Preveza	1	2	100.0%	1	1		0	2		0	3	
Thessalia (Thessaly)	35	40	14.3%	5	8	60.0%	8	11	37.5%	36	37	2.8%
Karditsa	9	5	-44.4%	1	1		1	0		12	5	
Larisa	10	14	40.0%	1	3		3	3		9	16	
Magnisia	10	12	20.0%	2	3		2	7		9	4	
Trikala	6	9	50.0%	1	1		2	1		6	12	
Ionioi Nisoi (Ionian Islands)	42	37	-11.9%	4	4	0.0%	6	15	150.0%	49	35	-28.6%
Zakynthos	10	4	-60.0%	1	1		0	1		11	4	
Kerkyra	16	20	25.0%	2	1		5	9		16	19	
Kefallinia	9	7	-22.2%	1	2		0	3		14	5	
Lefkada	7	6	-14.3%	0	0		1	2		8	7	

Table 1. Continued

Region and Department	Road Accidents			Killed			Seriously Injured			Slightly Injured		
	2012	2013	%	2012	2013	%	2012	2013	%	2012	2013	%
Dytiki Ellas (West Greece)	43	69	60.5%	6	17	183.3%	10	19	90.0%	44	73	65.9%
Aitolia, Akarnania	15	24	60.0%	4	6		0	6		16	28	
Achaia	17	27	58.8%	1	7		8	5		16	29	
Ileia	11	18	63.6%	1	4		2	8		12	16	
Sterea Ellas	55	59	7.3%	9	7	-22.2%	10	11	10.0%	49	53	8.2%
Voiotia	5	9	80.0%	0	2		0	2		7	7	
Evvoia	31	24	-22.6%	1	3		4	4		26	17	
Evrytania	1	2	100.0%	0	1		0	1		2	0	
Fthiotida	15	17	13.3%	6	1		6	3		11	21	
Fokida	3	7	133.3%	2	0		0	1		3	8	
Attiki (Attica)	431	373	-13.5%	26	13	-50.0%	42	17	-59.5%	512	431	-15.8%
Peloponnisos (Peloponnese)	77	69	-10.4%	13	6	-53.8%	14	11	-21.4%	95	94	-1.1%
Argolida	13	12	-7.7%	3	1		3	1		13	17	
Arkadia	13	13	0.0%	5	2		1	3		15	18	
Korinthia	25	22	-12.0%	4	0		7	4		27	31	
Lakonia	10	10	0.0%	0	3		3	3		15	9	
Messinia	16	12	-25.0%	1	0		0	0		25	19	
Voreio Aigaio (North Aegean)	17	10	-41.2%	3	0	-100.0%	0	1	-	17	14	-17.6%
Lesvos	12	7	-41.7%	2	0		0	1		13	11	
Samos	1	0	-100.0%	1	0		0	0		0	0	
Chios	4	3	-25.0%	0	0		0	0		4	3	
Notio Aigaio (South Aegean)	57	50	-12.3%	3	8	166.7%	21	17	-19.0%	61	43	-29.5%
Dodekanisos	39	25	-35.9%	1	5		10	8		53	22	
Kyklades	18	25	38.9%	2	3		11	9		8	21	
Kriti (Crete)	32	38	18.8%	3	6	100.0%	7	10	42.9%	36	45	25.0%
Irakleio	11	14	27.3%	2	3		2	7		13	15	
Lasithi	9	6	-33.3%	0	1		0	2		11	3	
Rethymni	3	5	66.7%	0	2		1	0		4	10	
Chania	9	13	44.4%	1	0		4	1		8	17	

Table 2. Road accidents and casualties, for the period January - August of the years 2011, 2012 and 2013

Period:	January - August			Percentage Change	
	2011	2012	2013	2012/2011	2013/2012
Road accidents	9,113	8,057	7,921	-11.6	-1.7
Killed	695	648	573	-6.8	-11.6
Seriously injured	1,143	967	907	-15.4	-6.2
Slightly injured	10,026	9,092	8,865	-9.3	-2.5
Casualties-Total	11,169	10,059	9,772	-9.9	-2.9

Diagram 1: Road accidents per 100,000 inhabitants

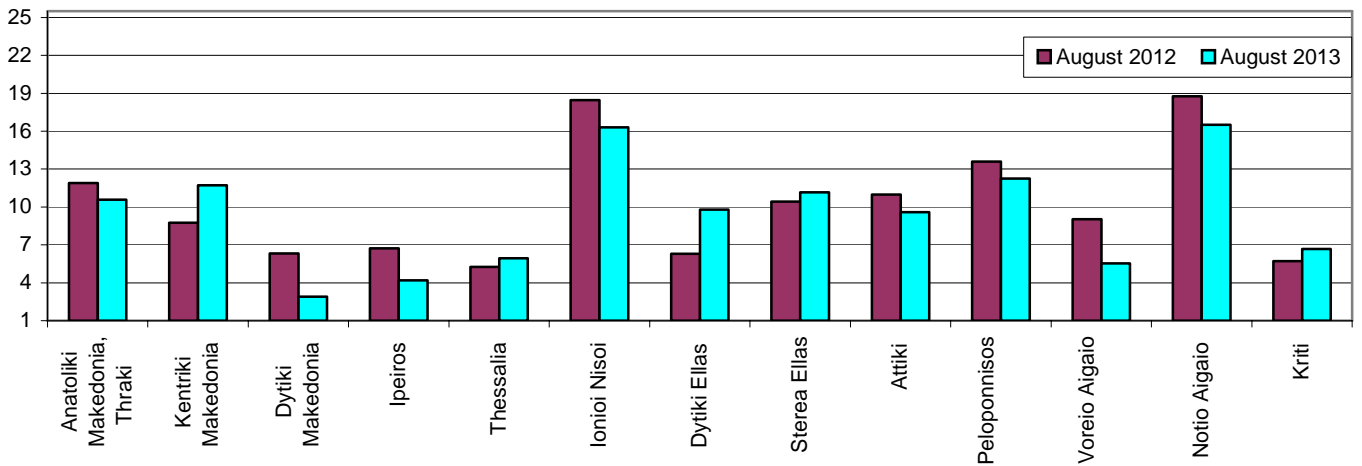


Diagram 2: Persons killed per 100,000 inhabitants

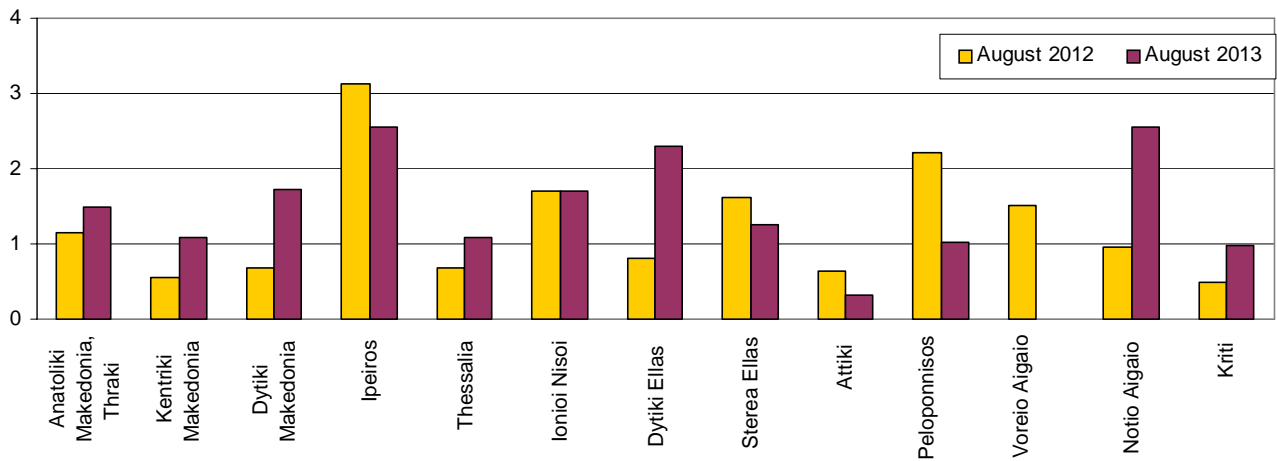


Diagram 3: Persons seriously injured per 100,000 inhabitants

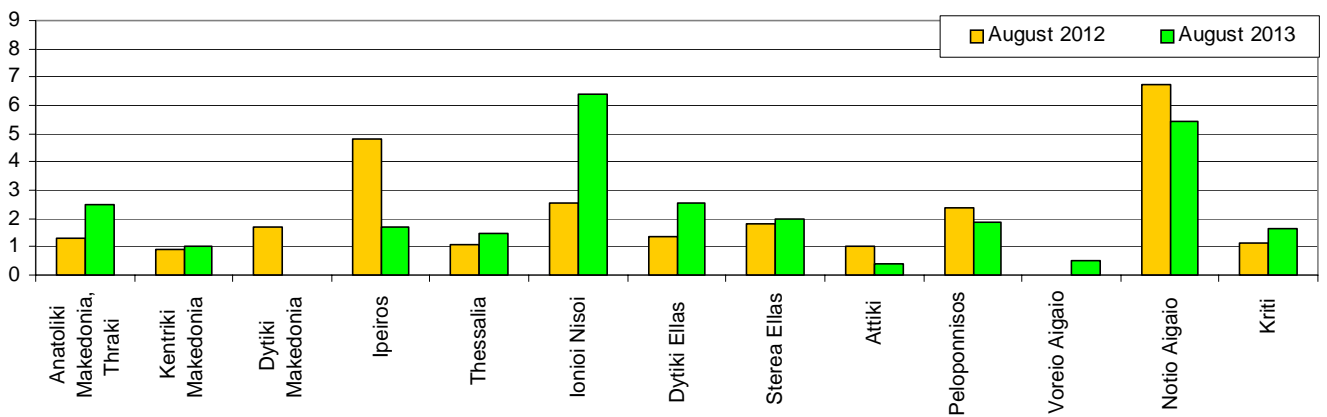
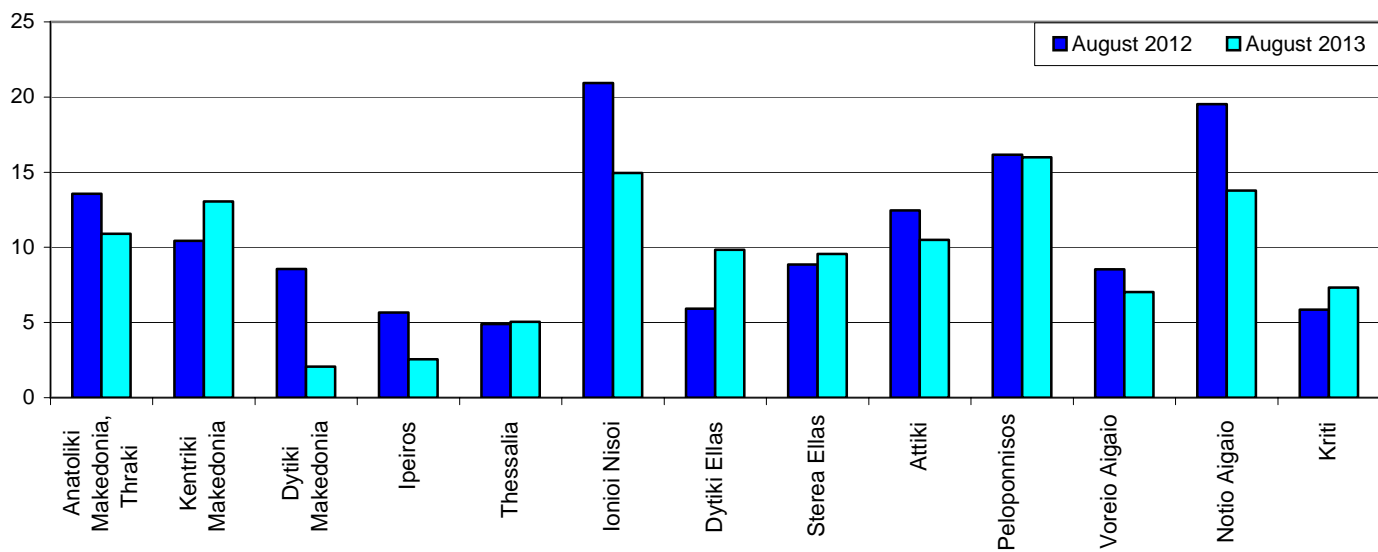


Diagram 4: Persons slightly injured per 100,000 inhabitants



EXPLANATORY NOTES

Survey on Road Accidents	<p>The survey on road accidents is conducted on a monthly basis and it records, for each Department of Greece and for each month separately, the number of accidents by fatal and/or non-fatal accident, as well as the number of persons injured by categories (drivers, passengers, pedestrians). On a yearly basis, road accidents are further analyzed.</p> <p>The competent agencies for filling in/collecting the questionnaires on road accidents are the local Police Authorities and the local Port Authorities of Greece.</p> <p>The lower level of analysis for the place where an injury road accident occurred is the settlement (oikismos), which is described by a 8-digit geographic code. Data are collected on a monthly basis.</p> <p>The main variables are the following: place of accident, kind of road, casualties, conditions of road surface and type of road.</p>
Legal basis	<p>The Survey on Road Traffic Accidents is governed by Council Decision 93/704/EC.</p>
Reference Period	<p>01.08.2013 to 31.08.2013</p>
Availability of Results	<p>Provisional data: 2 months after the accident Final data: 1 year after the reference year</p>
National Definitions	<p>Road accident (injury accident): Any accident involving at least one road motor vehicle in motion on a public road or square to which the public has access (excluding yards, industrial sites or vehicle depot of public transport enterprises), resulting in at least one injured or killed person. Accidents with only material damages are not included.</p> <p>Person killed: Any person killed immediately or dying within 30 days as a result of an injury accident (This national definition applies since 01.01.1996)</p> <p>Person injured: Any person who sustained an injury as result of an injury accident, and who normally needs medical treatment.</p> <p>Seriously injured: Any person who sustained an injury as result of an injury accident, such as brain damages, mutilation, multiple injuries, which August result in lack of awareness or which are life-threatening.</p> <p>Slightly injured: Any person injured who sustained minor and not life-threatening injuries.</p> <p>Vehicle: For the purposes of road accidents statistics, vehicles include motor vehicles, trolleybuses, motorcycles, bicycles, motorbikes, agricultural and road making machines, animal and hand-drawn vehicles. Railway vehicles are excluded, unless the road accident involves one of the aforementioned types of vehicles and therefore, railway vehicles are considered vehicles.</p>
Methodology	<p>The questionnaires of the survey are filled in by the local Police Authorities and the local Port Authorities as well.</p>
References	<p>More information about road accidents is available on ELSTAT's website and more specifically at the link: www.statistics.gr > Statistical Themes > Health – Social protection > Accidents > Road Traffic Accidents.</p> <p>It should be noted that previous press releases and time series are available on ELSTAT's website: www.statistics.gr</p>