



HELLENIC REPUBLIC



HELLENIC STATISTICAL AUTHORITY

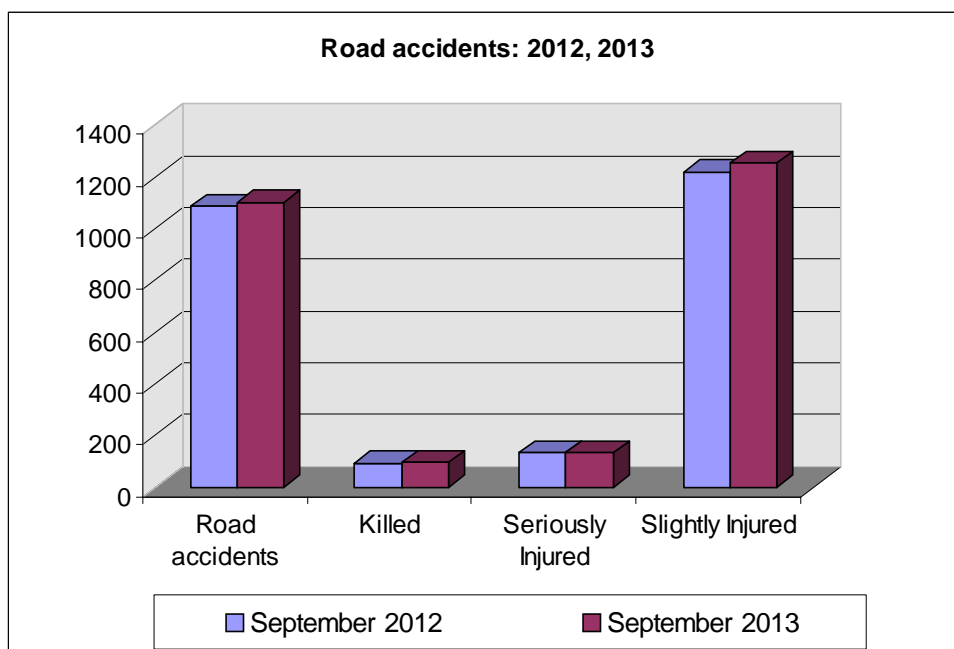
Piraeus, 29 November 2013

PRESS RELEASE

ROAD ACCIDENTS: September 2013

In September 2013 the road traffic accidents, which occurred in Greece resulting in injured or killed persons, increased by 1.6 % in comparison with the corresponding month of 2012 (1,104 road accidents in September 2013 against 1,087 road accidents in September 2012).

Among the casualties of the injury-causing accidents that occurred in September 2013, 97 persons were killed, 134 persons were seriously injured and 1,255 persons were slightly injured. In contrast, in September 2012 the corresponding figures were: 94 persons killed, 133 seriously injured and 1,222 slightly injured. Therefore, road accident casualties in September 2013 recorded an increase by 3.2% for persons killed, by 0.8% for persons seriously injured and by 2.7% for persons slightly injured.



Contact:
Social Statistics Division
Justice and Public Order Statistics Section

K. Theodoraki
Tel : +30 213 1352771
Fax : +30 213 1352764

Table 1. Road accidents and casualties, by region (NUTS 2) and department - September 2012 and 2013

Region and Department	Road Accidents			Killed			Seriously Injured			Slightly Injured		
	2012	2013	%	2012	2013	%	2012	2013	%	2012	2013	%
Greece, total	1,087	1,104	1.6%	94	97	3.2%	133	134	0.8%	1,222	1,255	2.7%
Anatoliki Makedonia, Thraki (East Macedonia and Thrace)	46	34	-26.1%	0	7	-	9	4	-55.6%	45	35	-22.2%
Drama	11	6	-45.5%	0	3		1	0		10	7	
Evros	5	8	60.0%	0	2		2	1		3	8	
Kavala	14	9	-35.7%	0	1		3	1		18	7	
Xanthi	14	5	-64.3%	0	0		3	0		11	9	
Rodopi	2	6	200.0%	0	1		0	2		3	4	
Kentriki Makedonia (Central Macedonia)	189	223	18.0%	16	16	0.0%	19	16	-15.8%	253	271	7.1%
Imathia	10	13	30.0%	0	4		1	1		11	11	
Thessaloniki	144	172	19.4%	8	9		10	6		203	217	
Kilkis	7	4	-42.9%	0	0		1	0		11	7	
Pella	4	6	50.0%	1	1		2	3		1	4	
Pieria	4	13	225.0%	0	1		0	4		9	9	
Serres	13	6	-53.8%	4	0		2	1		10	13	
Chalkidiki	7	9	28.6%	3	1		3	1		8	10	
Dytiki Makedonia (West Macedonia)	13	11	-15.4%	2	2	0.0%	2	4	100.0%	13	10	-23.1%
Grevena	4	1	-75.0%	1	0		0	0		3	1	
Kastoria	2	3	50.0%	1	1		1	0		1	2	
Kozani	7	5	-28.6%	0	1		1	3		9	4	
Florina	0	2	-	0	0		0	1		0	3	
Ipeiros (Epirus)	16	15	-6.3%	9	4	-55.6%	3	8	166.7%	5	14	180.0%
Arta	1	3	200.0%	1	1		0	1		0	1	
Thesprotia	9	4	-55.6%	2	0		2	0		4	5	
Ioannina	5	6	20.0%	6	2		0	3		1	7	
Preveza	1	2	100.0%	0	1		1	4		0	1	
Thessalia (Thessaly)	35	26	-25.7%	6	4	-33.3%	5	7	40.0%	34	24	-29.4%
Karditsa	12	7	-41.7%	1	0		2	1		12	8	
Larisa	8	11	37.5%	1	1		0	3		11	10	
Magnisia	8	2	-75.0%	2	0		1	0		6	4	
Trikala	7	6	-14.3%	2	3		2	3		5	2	
Ionioi Nisoι (Ionian Islands)	21	16	-23.8%	7	3	-57.1%	4	1	-75.0%	17	20	17.6%
Zakynthos	3	4	33.3%	0	1		0	1		3	4	
Kerkyra	10	9	-10.0%	4	1		1	0		11	13	
Kefallinia	2	3	50.0%	1	1		0	0		1	3	
Lefkada	6	0	-100.0%	2	0		3	0		2	0	

Table 1. Continued

Region and Department	Road Accidents			Killed			Seriously Injured			Slightly Injured		
	2012	2013	%	2012	2013	%	2012	2013	%	2012	2013	%
Dytiki Ellas (West Greece)	39	39	0.0%	4	7	75.0%	11	10	-9.1%	40	48	20.0%
Aitolia, Akarnania	18	13	-27.8%	1	1		4	3		18	22	
Achaia	12	17	41.7%	3	5		4	6		11	14	
Ileia	9	9	0.0%	0	1		3	1		11	12	
Sterea Ellas	36	43	19.4%	13	7	-46.2%	6	11	83.3%	27	36	33.3%
Voiotia	4	8	100.0%	1	3		0	0		3	9	
Evvoia	17	13	-23.5%	8	1		3	5		6	9	
Evrytania	0	3	-	0	0		0	0		0	3	
Fthiotida	13	17	30.8%	4	2		3	6		14	14	
Fokida	2	2	0.0%	0	1		0	0		4	1	
Attiki (Attica)	558	561	0.5%	21	21	0.0%	36	34	-5.6%	641	666	3.9%
Peloponnisos (Peloponnese)	57	63	10.5%	8	11	37.5%	13	14	7.7%	66	68	3.0%
Argolida	4	14	250.0%	1	5		1	4		3	14	
Arkadia	15	11	-26.7%	2	0		2	2		21	13	
Korinthia	10	15	50.0%	1	0		4	4		10	16	
Lakonia	13	12	-7.7%	2	6		5	2		14	10	
Messinia	15	11	-26.7%	2	0		1	2		18	15	
Voreio Aigaio (North Aegean)	8	17	112.5%	1	4	300.0%	3	4	33.3%	6	15	150.0%
Lesvos	5	15	200.0%	0	3		1	2		5	11	
Samos	2	1	-50.0%	1	1		1	2		1	1	
Chios	1	1	0.0%	0	0		1	0		0	3	
Notio Aigaio (South Aegean)	46	31	-32.6%	3	3	0.0%	14	12	-14.3%	53	28	-47.2%
Dodekanisos	29	17	-41.4%	0	3		6	3		41	17	
Kyklades	17	14	-17.6%	3	0		8	9		12	11	
Kriti (Crete)	23	25	8.7%	4	8	100.0%	8	9	12.5%	22	20	-9.1%
Irakleio	13	6	-53.8%	1	2		7	4		13	6	
Lasithi	0	4	-	0	3		0	0		0	1	
Rethymni	2	1	-50.0%	0	1		0	0		3	0	
Chania	8	14	75.0%	3	2		1	5		6	13	

Table 2. Road accidents and casualties, for the period January - September of the years 2011, 2012 and 2013

Period:	January - September			Percentage Change	
	2011	2012	2013	2012/2011	2013/2012
Road accidents	10,316	9,144	9,025	-11.4	-1.3
Killed	806	742	670	-7.9	-9.7
Seriously injured	1,286	1,100	1,041	-14.5	-5.4
Slightly injured	11,394	10,314	10,120	-9.5	-1.9
Casualties-Total	12,680	11,414	11,161	-10.0	-2.2

Diagram 1: Road accidents per 100,000 inhabitants

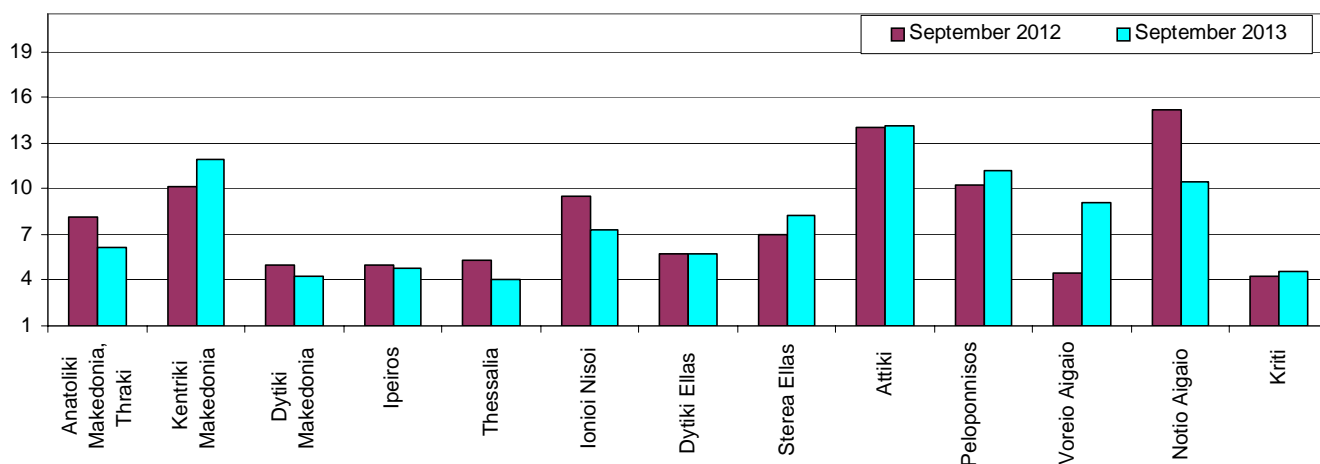


Diagram 2: Persons killed per 100,000 inhabitants

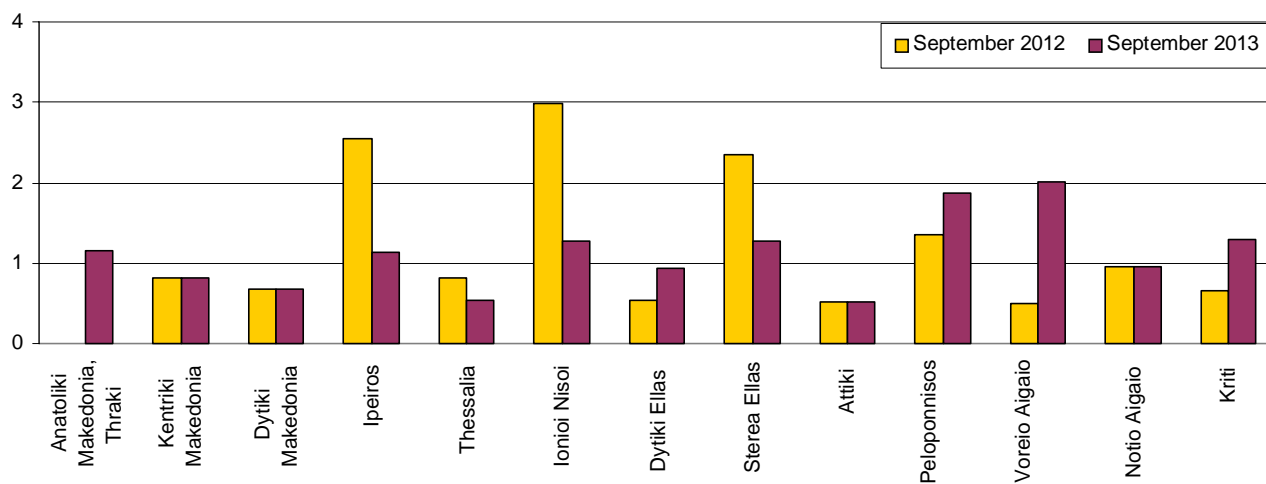


Diagram 3: Persons seriously injured per 100,000 inhabitants

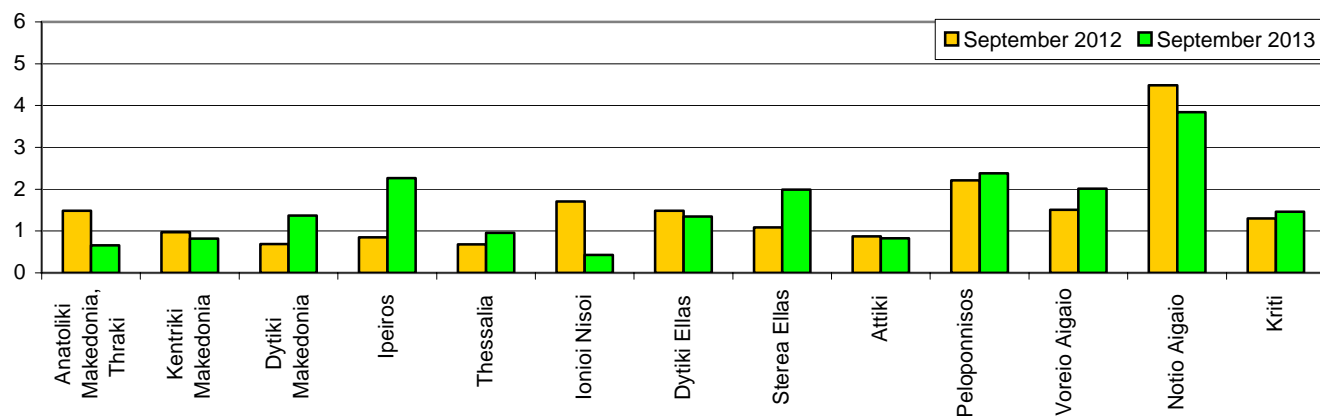
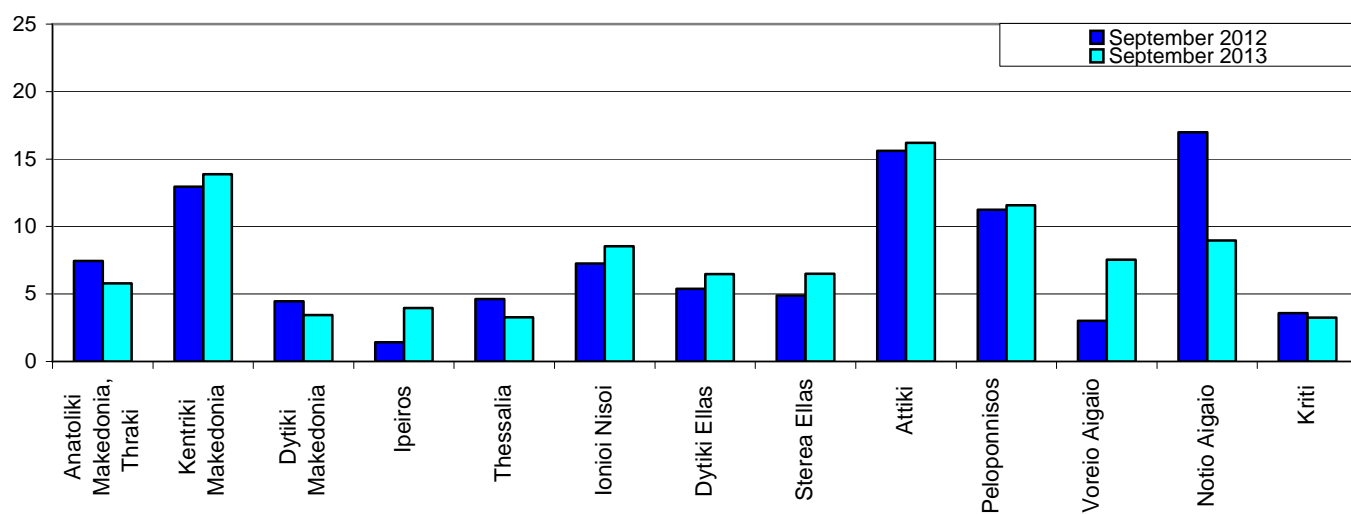


Diagram 4: Persons slightly injured per 100,000 inhabitants



EXPLANATORY NOTES

Survey on Road Accidents

The survey on road accidents is conducted on a monthly basis and it records, for each Department of Greece and for each month separately, the number of accidents by fatal and/or non-fatal accident, as well as the number of persons injured by categories (drivers, passengers, pedestrians). On a yearly basis, road accidents are further analyzed.

The competent agencies for filling in/collecting the questionnaires on road accidents are the local Police Authorities and the local Port Authorities of Greece.

The lower level of analysis for the place where an injury road accident occurred is the settlement (oikismos), which is described by a 8-digit geographic code. Data are collected on a monthly basis.

The main variables are the following: place of accident, kind of road, casualties, conditions of road surface and type of road.

Legal basis

The Survey on Road Traffic Accidents is governed by Council Decision 93/704/EC.

Reference Period

01.09.2013 to 30.09.2013

Availability of Results

Provisional data: 2 months after the accident
Final data: 1 year after the reference year

National Definitions

Road accident (injury accident): Any accident involving at least one road motor vehicle in motion on a public road or square to which the public has access (excluding yards, industrial sites or vehicle depot of public transport enterprises), resulting in at least one injured or killed person. Accidents with only material damages are not included.

Person killed: Any person killed immediately or dying within 30 days as a result of an injury accident (This national definition applies since 01.01.1996)

Person injured: Any person who sustained an injury as result of an injury accident, and who normally needs medical treatment.

Seriously injured: Any person who sustained an injury as result of an injury accident, such as brain damages, mutilation, multiple injuries, which September result in lack of awareness or which are life-threatening.

Slightly injured: Any person injured who sustained minor and not life-threatening injuries.

Vehicle: For the purposes of road accidents statistics, vehicles include motor vehicles, trolleybuses, motorcycles, bicycles, motorbikes, agricultural and road making machines, animal and hand-drawn vehicles. Railway vehicles are excluded, unless the road accident involves one of the aforementioned types of vehicles and therefore, railway vehicles are considered vehicles.

Methodology

The questionnaires of the survey are filled in by the local Police Authorities and the local Port Authorities as well.

References

More information about road accidents is available on ELSTAT's website and more specifically at the link: www.statistics.gr > Statistical Themes > Health – Social protection > Accidents > Road Traffic Accidents.

It should be noted that previous press releases and time series are available on ELSTAT's website: www.statistics.gr