



HELLENIC REPUBLIC



HELLENIC STATISTICAL AUTHORITY

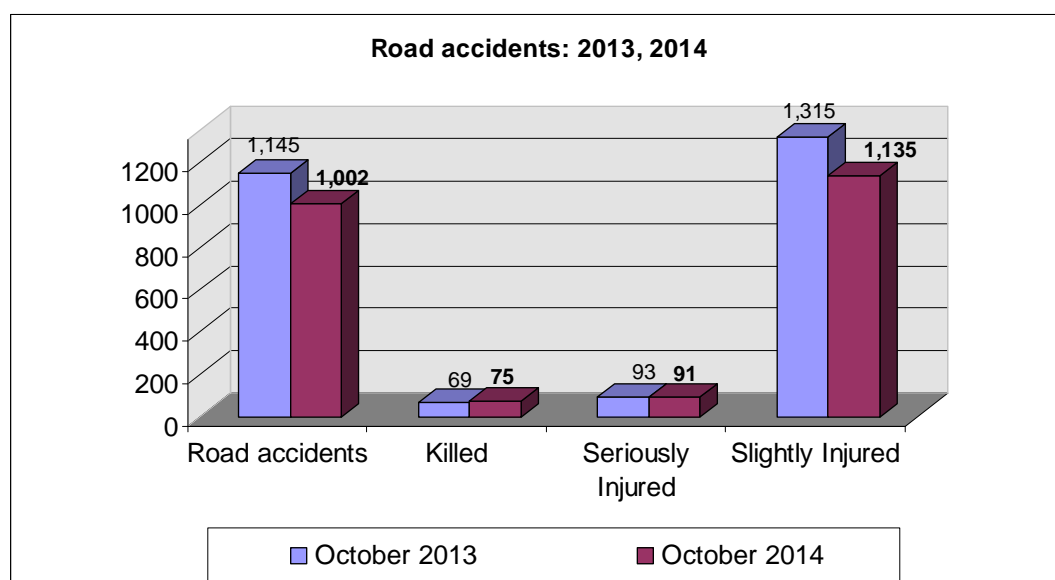
Piraeus, 31 December 2014

## PRESS RELEASE

### ROAD ACCIDENTS: October 2014

In October 2014 the road traffic accidents, which occurred in Greece resulting in injured or killed persons, decreased by 12.5% in comparison with the corresponding month of 2013 (1,002 road accidents in October 2014 against 1,145 road accidents in October 2013).

Among the casualties of the injury-causing accidents that occurred in October 2014, 75 persons were killed, 91 persons were seriously injured and 1,135 persons were slightly injured. In contrast, in October 2013 the corresponding figures were: 69 persons killed, 93 seriously injured and 1,315 slightly injured. Therefore, road accident casualties in October 2014 recorded an increase by 8.7% for persons killed, a decrease by 2.2% for persons seriously injured and by 13.7% for persons slightly injured.



Contact:  
Social Statistics Division  
Justice and Public Order Statistics Section

D. Athanasopoulou  
Tel : +30 213 1352767  
Fax : +30 213 1352764

Table 1. Road accidents and casualties, by region (NUTS 2) and department - October 2013 and 2014

Region and Department	Road Accidents			Killed			Seriously Injured			Slightly Injured		
	2013	2014	%	2013	2014	%	2013	2014	%	2013	2014	%
<b>Greece. total</b>	<b>1,145</b>	<b>1,002</b>	<b>-12.5%</b>	<b>69</b>	<b>75</b>	<b>8.7%</b>	<b>93</b>	<b>91</b>	<b>-2.2%</b>	<b>1,315</b>	<b>1,135</b>	<b>-13.7%</b>
<b>Anatoliki Makedonia, Thraki (East Macedonia and Thrace)</b>	<b>37</b>	<b>40</b>	<b>8.1%</b>	<b>6</b>	<b>3</b>	<b>-50.0%</b>	<b>5</b>	<b>3</b>	<b>-40.0%</b>	<b>39</b>	<b>48</b>	<b>23.1%</b>
Drama	5	7	40.0%	1	0		0	0		5	8	
Evros	7	11	57.1%	0	0		0	1		10	14	
Kavala	9	8	-11.1%	2	2		3	1		6	13	
Xanthi	9	10	11.1%	2	1		0	1		9	8	
Rodopi	7	4	-42.9%	1	0		2	0		9	5	
<b>Kentriki Makedonia (Central Macedonia)</b>	<b>236</b>	<b>186</b>	<b>-21.2%</b>	<b>8</b>	<b>9</b>	<b>12.5%</b>	<b>5</b>	<b>13</b>	<b>160.0%</b>	<b>293</b>	<b>248</b>	<b>-15.4%</b>
Imathia	4	6	50.0%	0	5		0	2		7	35	
Thessaloniki	205	160	-22.0%	4	1		3	6		257	183	
Kilkis	6	2	-66.7%	1	1		0	0		5	2	
Pella	5	4	-20.0%	2	1		0	1		4	4	
Pieria	2	2	0.0%	0	1		1	0		1	4	
Serres	10	6	-40.0%	1	0		1	2		10	7	
Chalkidiki	4	6	50.0%	0	0		0	2		9	13	
<b>Dytiki Makedonia (West Macedonia)</b>	<b>4</b>	<b>4</b>	<b>0.0%</b>	<b>1</b>	<b>1</b>	<b>0.0%</b>	<b>0</b>	<b>3</b>	<b>-</b>	<b>6</b>	<b>3</b>	<b>-50.0%</b>
Grevena	0	1	-	0	0		0	0		0	2	
Kastoria	1	1	0.0%	0	1		0	0		2	1	
Kozani	3	1	-66.7%	1	0		0	2		4	0	
Florina	0	1	-	0	0		0	1		0	0	
<b>Ipeiros (Epirus)</b>	<b>10</b>	<b>12</b>	<b>20.0%</b>	<b>6</b>	<b>1</b>	<b>-83.3%</b>	<b>5</b>	<b>3</b>	<b>-40.0%</b>	<b>8</b>	<b>15</b>	<b>87.5%</b>
Arta	2	3	50.0%	0	1		1	1		2	2	
Thesprotia	2	5	150.0%	0	0		0	0		3	6	
Ioannina	3	3	0.0%	3	0		3	2		2	6	
Preveza	3	1	-66.7%	3	0		1	0		1	1	
<b>Thessalia (Thessaly)</b>	<b>28</b>	<b>28</b>	<b>0.0%</b>	<b>4</b>	<b>4</b>	<b>0.0%</b>	<b>6</b>	<b>3</b>	<b>-50.0%</b>	<b>37</b>	<b>30</b>	<b>-18.9%</b>
Karditsa	13	7	-46.2%	1	1		3	0		11	7	
Larisa	9	11	22.2%	1	0		2	3		14	15	
Magnisia	3	5	66.7%	0	2		1	0		11	4	
Trikala	3	5	66.7%	2	1		0	0		1	4	
<b>Ionioi Nisoi (Ionian Islands)</b>	<b>12</b>	<b>10</b>	<b>-16.7%</b>	<b>4</b>	<b>1</b>	<b>-75.0%</b>	<b>3</b>	<b>0</b>	<b>-100.0%</b>	<b>7</b>	<b>12</b>	<b>71.4%</b>
Zakynthos	0	2	-	0	0		0	0		0	2	
Kerkyra	7	6	-14.3%	2	1		3	0		4	8	
Kefallinia	2	1	-50.0%	0	0		0	0		2	1	
Lefkada	3	1	-66.7%	2	0		0	0		1	1	

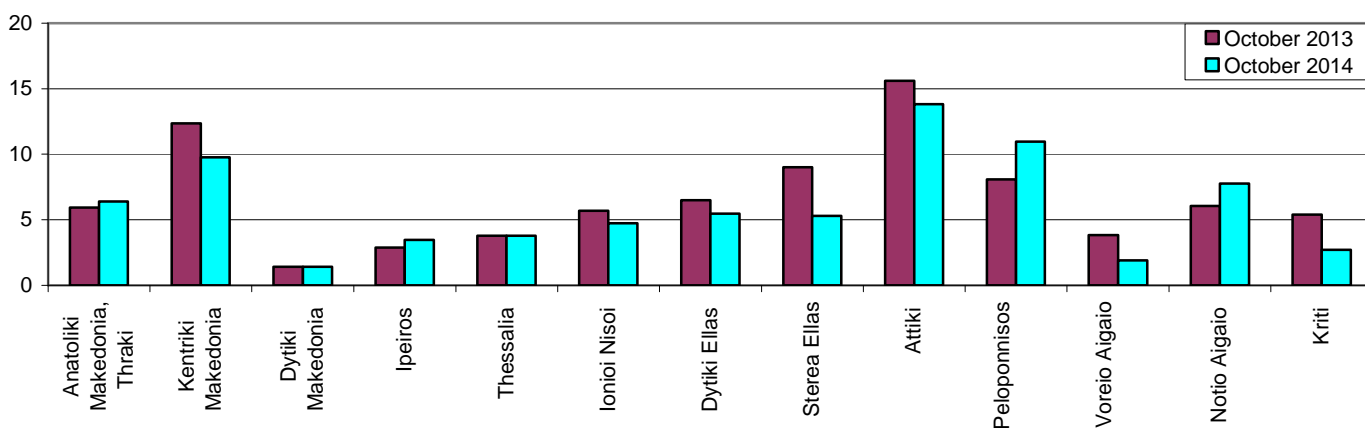
Table 1. Continued

Region and Department	Road Accidents			Killed			Seriously Injured			Slightly Injured		
	2013	2014	%	2013	2014	%	2013	2014	%	2013	2014	%
<b>Dytiki Ellas (West Greece)</b>	<b>44</b>	<b>37</b>	<b>-15.9%</b>	<b>4</b>	<b>8</b>	<b>100.0%</b>	<b>9</b>	<b>8</b>	<b>-11.1%</b>	<b>51</b>	<b>29</b>	<b>-43.1%</b>
Aitolia, Akarnania	19	19	0.0%	3	5		5	5		20	13	
Achaia	14	11	-21.4%	0	2		3	3		16	9	
Ileia	11	7	-36.4%	1	1		1	0		15	7	
<b>Sterea Ellas</b>	<b>51</b>	<b>30</b>	<b>-41.2%</b>	<b>9</b>	<b>4</b>	<b>-55.6%</b>	<b>6</b>	<b>6</b>	<b>0.0%</b>	<b>61</b>	<b>26</b>	<b>-57.4%</b>
Voiotia	12	5	-58.3%	3	2		1	0		17	5	
Evvoia	15	7	-53.3%	4	0		0	2		21	5	
Evrytania	2	1	-50.0%	0	0		2	0		0	1	
Fthiotida	15	11	-26.7%	1	0		3	3		15	9	
Fokida	7	6	-14.3%	1	2		0	1		8	6	
<b>Attiki (Attica)</b>	<b>612</b>	<b>542</b>	<b>-11.4%</b>	<b>13</b>	<b>24</b>	<b>84.6%</b>	<b>33</b>	<b>26</b>	<b>-21.2%</b>	<b>701</b>	<b>613</b>	<b>-12.6%</b>
<b>Peloponnisos (Peloponnese)</b>	<b>48</b>	<b>65</b>	<b>35.4%</b>	<b>2</b>	<b>9</b>	<b>350.0%</b>	<b>9</b>	<b>7</b>	<b>-22.2%</b>	<b>48</b>	<b>72</b>	<b>50.0%</b>
Argolida	5	9	80.0%	0	1		1	2		6	10	
Arkadia	9	12	33.3%	0	0		3	1		8	13	
Korinthia	18	20	11.1%	2	1		3	0		17	22	
Lakonia	4	11	175.0%	0	4		1	2		4	13	
Messinia	12	13	8.3%	0	3		1	2		13	14	
<b>Voreio Aigaio (North Aegean)</b>	<b>8</b>	<b>4</b>	<b>-50.0%</b>	<b>2</b>	<b>2</b>	<b>0.0%</b>	<b>2</b>	<b>0</b>	<b>-100.0%</b>	<b>5</b>	<b>5</b>	<b>0.0%</b>
Lesvos	3	3	0.0%	0	1		1	0		2	4	
Samos	2	0	-100.0%	2	0		0	0		0	0	
Chios	3	1	-66.7%	0	1		1	0		3	1	
<b>Notio Aigaio (South Aegean)</b>	<b>21</b>	<b>27</b>	<b>28.6%</b>	<b>2</b>	<b>3</b>	<b>50.0%</b>	<b>6</b>	<b>13</b>	<b>116.7%</b>	<b>21</b>	<b>23</b>	<b>9.5%</b>
Dodekanisos	10	13	30.0%	2	3		3	3		9	11	
Kyklades	11	14	27.3%	0	0		3	10		12	12	
<b>Kriti (Crete)</b>	<b>34</b>	<b>17</b>	<b>-50.0%</b>	<b>8</b>	<b>6</b>	<b>-25.0%</b>	<b>4</b>	<b>6</b>	<b>50.0%</b>	<b>38</b>	<b>11</b>	<b>-71.1%</b>
Irakleio	12	7	-41.7%	0	4		3	3		15	5	
Lasithi	4	2	-50.0%	2	0		1	0		1	2	
Rethymni	4	2	-50.0%	1	1		0	0		3	1	
Chania	14	6	-57.1%	5	1		0	3		19	3	

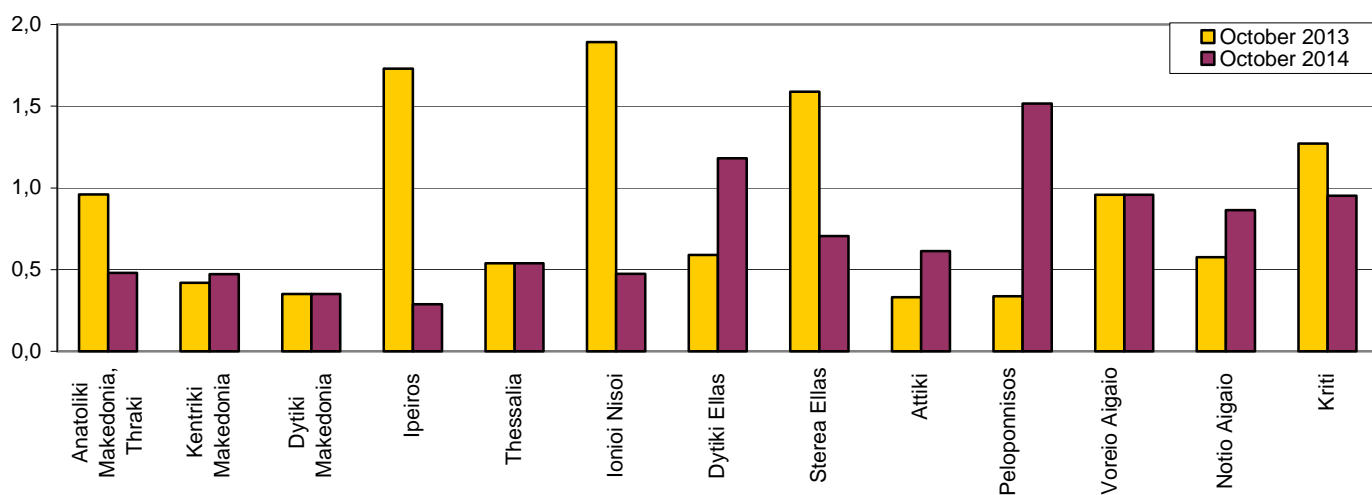
Table 2. Road accidents and casualties, for the period January - October of the years 2012, 2013 and 2014

Period:	January - October			Percentage Change	
	2012	2013	2014	2013/2012	2014/2013
<b>Road accidents</b>	10,295	10,170	9,945	-1.2	-2.2
<b>Killed</b>	839	739	661	-11.9	-10.6
<b>Seriously injured</b>	1,218	1,134	935	-6.9	-17.5
<b>Slightly injured</b>	11,590	11,435	11,350	-1.3	-0.7
<b>Casualties-Total</b>	12,808	12,569	12,285	-1.9	-2.3

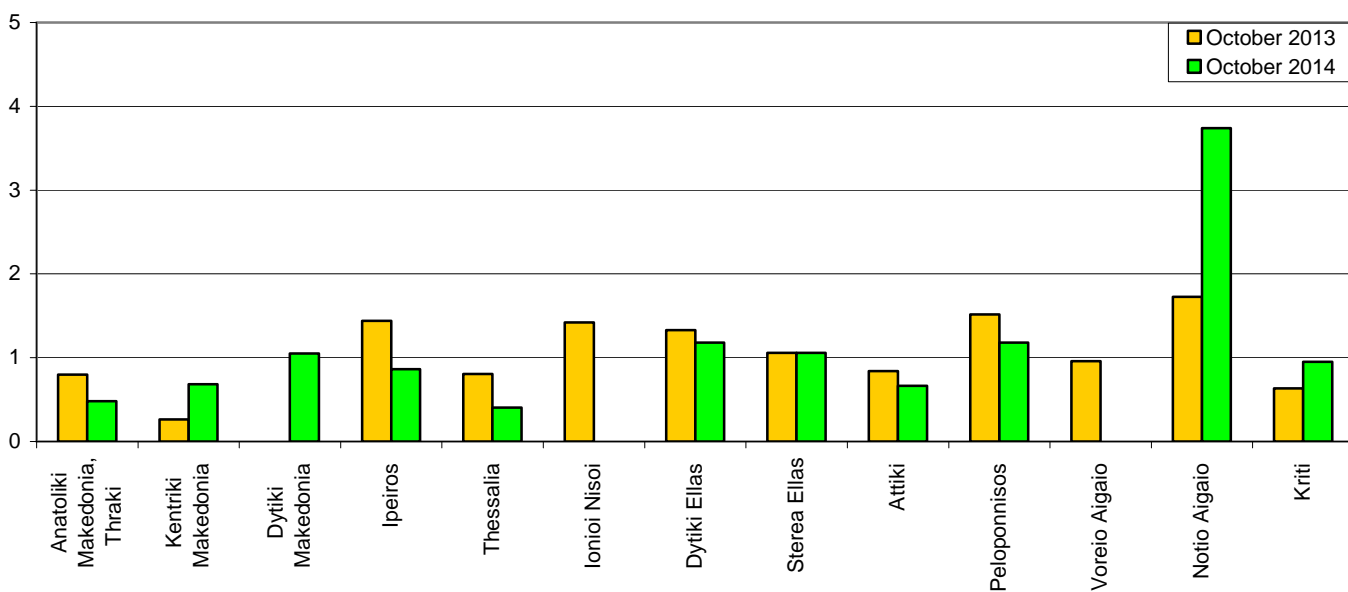
**Diagram 1: Road accidents per 100,000 inhabitants**



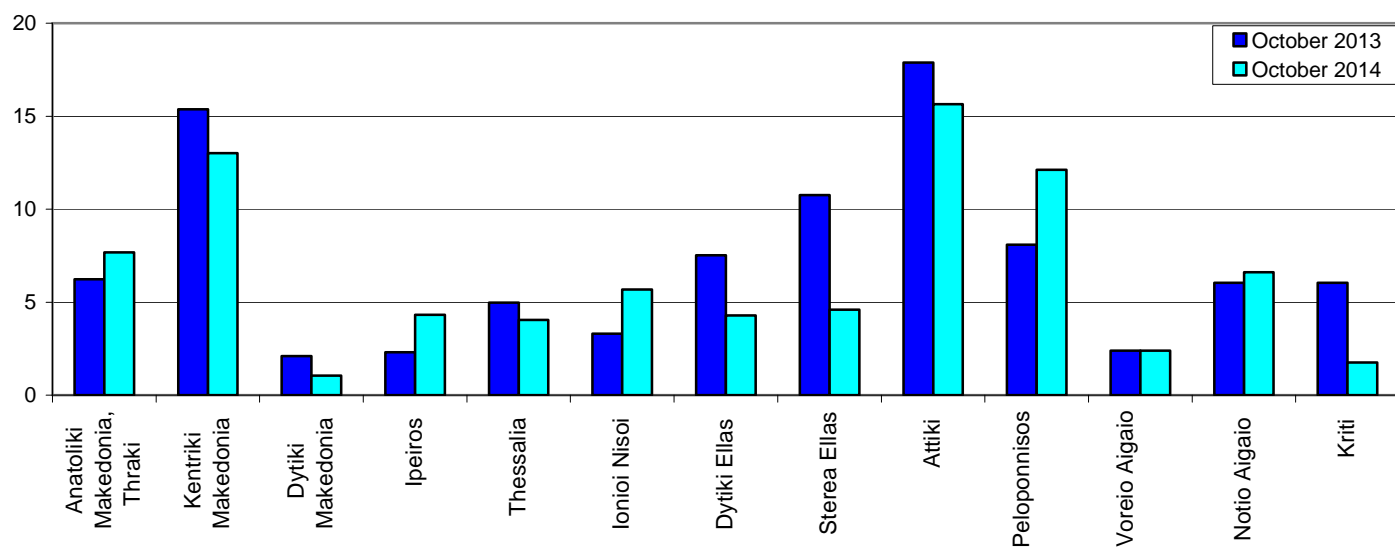
**Diagram 2: Persons killed per 100,000 inhabitants**



**Diagram 3: Persons seriously injured per 100,000 inhabitants**



**Diagram 4: Persons slightly injured per 100,000 inhabitants**



## EXPLANATORY NOTES

<b>Survey on Road Accidents</b>	<p>The survey on road accidents is conducted on a monthly basis and it records, for each Department of Greece and for each month separately, the number of accidents by fatal and/or non-fatal accident, as well as the number of persons injured by categories (drivers, passengers, pedestrians). On a yearly basis, road accidents are further analyzed.</p> <p>The competent agencies for filling in/collecting the questionnaires on road accidents are the local Police Authorities and the local Port Authorities of Greece.</p> <p>The lower level of analysis for the place where an injury road accident occurred is the settlement (oikismos), which is described by a 8-digit geographic code. Data are collected on a monthly basis.</p> <p>The main variables are the following: place of accident, kind of road, casualties, conditions of road surface and type of road.</p>
<b>Legal basis</b>	The Survey on Road Traffic Accidents is governed by Council Decision 93/704/EC.
<b>Reference Period</b>	01.10.2014 to 31.10.2014
<b>Availability of Results</b>	<p>Provisional data: 2 months after the accident</p> <p>Final data: 1 year after the reference year</p>
<b>National Definitions</b>	<p><b>Road accident</b> (injury accident): Any accident involving at least one road motor vehicle in motion on a public road or square to which the public has access (excluding yards, industrial sites or vehicle depot of public transport enterprises), resulting in at least one injured or killed person. Accidents with only material damages are not included.</p> <p><b>Person killed:</b> Any person killed immediately or dying within 30 days as a result of an injury accident (This national definition applies since 01.01.1996)</p> <p><b>Person injured:</b> Any person who sustained an injury as result of an injury accident, and who normally needs medical treatment.</p> <p><b>Seriously injured:</b> Any person who sustained an injury as result of an injury accident, such as brain damages, mutilation, multiple injuries, which may result in lack of awareness or which are life-threatening.</p> <p><b>Slightly injured:</b> Any person injured who sustained minor and not life-threatening injuries.</p> <p><b>Vehicle:</b> For the purposes of road accidents statistics, vehicles include motor vehicles, trolleybuses, motorcycles, bicycles, motorbikes, agricultural and road making machines, animal and hand-drawn vehicles. Railway vehicles are excluded, unless the road accident involves one of the aforementioned types of vehicles and therefore, railway vehicles are considered vehicles.</p>
<b>Methodology</b>	The questionnaires of the survey are filled in by the local Police Authorities and the local Port Authorities as well.
<b>References</b>	<p>More information about road accidents is available on ELSTAT's website and more specifically at the link: <a href="http://www.statistics.gr">www.statistics.gr</a> &gt; Statistical Themes &gt; Health – Social protection &gt; Accidents &gt; Road Traffic Accidents.</p> <p>It should be noted that previous press releases and time series are available on ELSTAT's website: <a href="http://www.statistics.gr">www.statistics.gr</a></p>