



HELLENIC REPUBLIC



HELLENIC STATISTICAL AUTHORITY

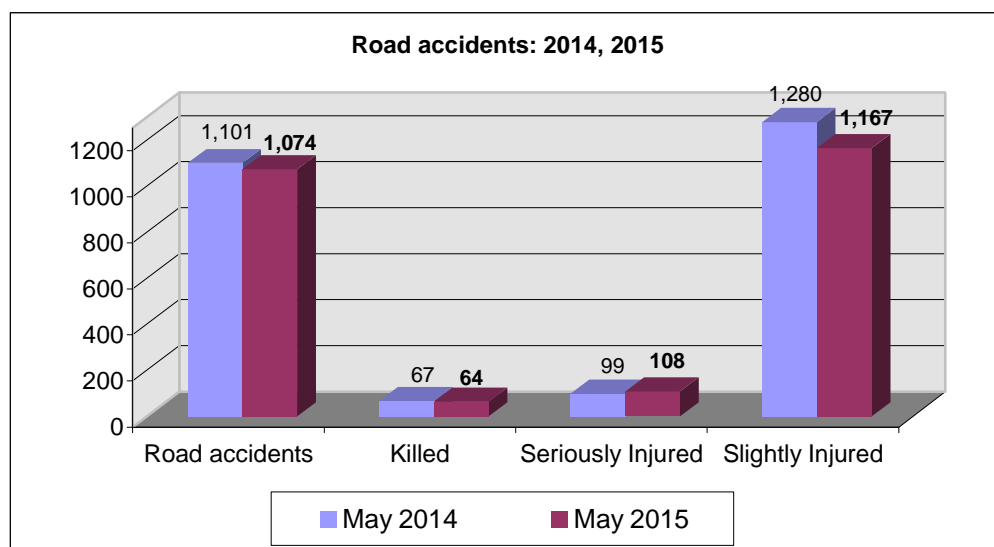
Piraeus, 31 July 2015

PRESS RELEASE

ROAD ACCIDENTS: May 2015

In May 2015 the road traffic accidents, which occurred in Greece resulting in injured or killed persons, decreased by 2.5% in comparison with the corresponding month of 2014 (1,074 road accidents in May 2015 against 1,101 road accidents in May 2014).

Among the casualties of the injury-causing accidents that occurred in May 2015, 64 persons were killed, 108 persons were seriously injured and 1,167 persons were slightly injured. In contrast, in May 2014 the corresponding figures were: 67 persons killed, 99 seriously injured and 1,280 slightly injured. Therefore, road accident casualties in May 2015 recorded a decrease by 4.5% for persons killed, an increase by 9.1% for persons seriously injured and a decrease by 8.8% for persons slightly injured.



Contact:
Social Statistics Division
Justice and Public Order Statistics Section

D. Athanasopoulou
Tel : +30 213 1352767
Fax : +30 213 1352764

Table 1. Road accidents and casualties, by region (NUTS 2) and department - May 2014 and 2015

Region and Department	Road Accidents			Killed			Seriously Injured			Slightly Injured		
	2014	2015	%	2014	2015	%	2014	2015	%	2014	2015	%
Greece total	1,101	1,074	-2.5%	67	64	-4.5%	99	108	9.1%	1,280	1,167	-8.8%
Anatoliki Makedonia, Thraki (East Macedonia and Thrace)	40	57	42.5%	5	3	-40.0%	6	11	83.3%	42	67	59.5%
Drama	4	10	150.0%	0	0		1	0		4	16	
Evros	5	12	140.0%	1	1		0	3		8	12	
Kavala	15	16	6.7%	2	2		4	4		13	16	
Xanthi	9	9	0.0%	1	0		1	2		9	9	
Rodopi	7	10	42.9%	1	0		0	2		8	14	
Kentriki Makedonia (Central Macedonia)	204	195	-4.4%	9	10	11.1%	12	11	-8.3%	256	220	-14.1%
Imathia	3	6	100.0%	0	0		0	1		4	5	
Thessaloniki	171	168	-1.8%	7	8		4	6		218	192	
Kilkis	6	4	-33.3%	0	1		1	0		7	5	
Pella	4	4	0.0%	0	0		0	0		4	6	
Pieria	6	2	-66.7%	2	0		1	1		4	1	
Serres	7	3	-57.1%	0	0		1	2		11	1	
Chalkidiki	7	8	14.3%	0	1		5	1		8	10	
Dytiki Makedonia (West Macedonia)	5	7	40.0%	1	3	200.0%	1	2	100.0%	6	4	-33.3%
Grevena	0	3	-	0	1		0	2		0	1	
Kastoria	2	0	-100.0%	0	0		1	0		1	0	
Kozani	3	3	0.0%	1	2		0	0		5	2	
Florina	0	1	-	0	0		0	0		0	1	
Ipeiros (Epirus)	18	11	-38.9%	3	1	-66.7%	7	2	-71.4%	21	13	-38.1%
Arta	2	1	-50.0%	1	0		0	0		1	1	
Thesprotia	4	5	25.0%	1	1		1	0		4	5	
Ioannina	6	4	-33.3%	0	0		2	1		7	7	
Preveza	6	1	-83.3%	1	0		4	1		9	0	
Thessalia (Thessaly)	28	25	-10.7%	6	1	-83.3%	4	7	75.0%	31	23	-25.8%
Karditsa	11	9	-18.2%	1	0		0	5		15	8	
Larisa	7	11	57.1%	2	0		1	0		8	13	
Magnisia	7	3	-57.1%	2	0		3	2		6	1	
Trikala	3	2	-33.3%	1	1		0	0		2	1	
Ionioi Nisoi (Ionian Islands)	14	16	14.3%	1	2	100.0%	2	4	100.0%	18	17	-5.6%
Zakynthos	2	3	50.0%	0	0		1	0		1	5	
Kerkyra	5	7	40.0%	1	1		0	3		8	6	
Kefallinia	3	3	0.0%	0	1		0	0		4	2	
Lefkada	4	3	-25.0%	0	0		1	1		5	4	

Table 1. Continued

Region and Department	Road Accidents			Killed			Seriously Injured			Slightly Injured		
	2014	2015	%	2014	2015	%	2014	2015	%	2014	2015	%
Dytiki Ellas (West Greece)	38	45	18.4%	5	7	40.0%	3	7	133.3%	69	38	-44.9%
Aitolia, Akarnania	11	11	0.0%	3	1		1	2		16	9	
Achaia	21	25	19.0%	1	3		2	2		48	23	
Ileia	6	9	50.0%	1	3		0	3		5	6	
Sterea Ellas	33	45	36.4%	2	8	300.0%	1	3	200.0%	42	43	2.4%
Voiotia	9	10	11.1%	0	2		0	1		13	11	
Evvoia	17	22	29.4%	1	5		1	0		19	20	
Evrytania	1	0	-100.0%	0	0		0	0		1	0	
Fthiotida	6	9	50.0%	1	1		0	0		9	10	
Fokida	0	4	-	0	0		0	2		0	2	
Attiki (Attica)	605	555	-8.3%	15	14	-6.7%	34	27	-20.6%	688	625	-9.2%
Peloponnisos (Peloponnese)	55	52	-5.5%	9	5	-44.4%	11	7	-36.4%	62	64	3.2%
Argolida	6	8	33.3%	2	0		1	2		16	15	
Arkadia	8	7	-12.5%	1	2		3	1		8	8	
Korinthia	27	18	-33.3%	4	0		5	2		25	18	
Lakonia	9	5	-44.4%	1	1		1	0		9	4	
Messinia	5	14	180.0%	1	2		1	2		4	19	
Voreio Aigaio (North Aegean)	13	7	-46.2%	4	1	-75.0%	2	3	50.0%	11	8	-27.3%
Lesvos	8	4	-50.0%	2	0		1	2		8	2	
Samos	0	1	-	0	0		0	0		0	2	
Chios	5	2	-60.0%	2	1		1	1		3	4	
Notio Aigaio (South Aegean)	27	39	44.4%	1	2	100.0%	11	20	81.8%	19	31	63.2%
Dodekanisos	14	23	64.3%	0	0		4	7		14	21	
Kyklades	13	16	23.1%	1	2		7	13		5	10	
Kriti (Crete)	21	20	-4.8%	6	7	16.7%	5	4	-20.0%	15	14	-6.7%
Irakleio	7	11	57.1%	1	3		1	2		9	9	
Lasithi	2	2	0.0%	0	2		0	0		2	1	
Rethymni	3	1	-66.7%	2	0		0	0		2	2	
Chania	9	6	-33.3%	3	2		4	2		2	2	

Table 2. Road accidents and casualties, for the period January - May of the years 2013, 2014 and 2015

Period:	January - May			Percentage Change	
	2013	2014	2015	2014/2013	2015/2014
Road accidents	4,645	4,587	4,285	-1.2	-6.6
Killed	301	274	297	-9.0	8.4
Seriously injured	479	371	405	-22.5	9.2
Slightly injured	5,174	5,247	4,692	1.4	-10.6
Casualties-Total	5,653	5,618	5,097	-0.6	-9.3

Diagram 1: Road accidents per 100,000 inhabitants

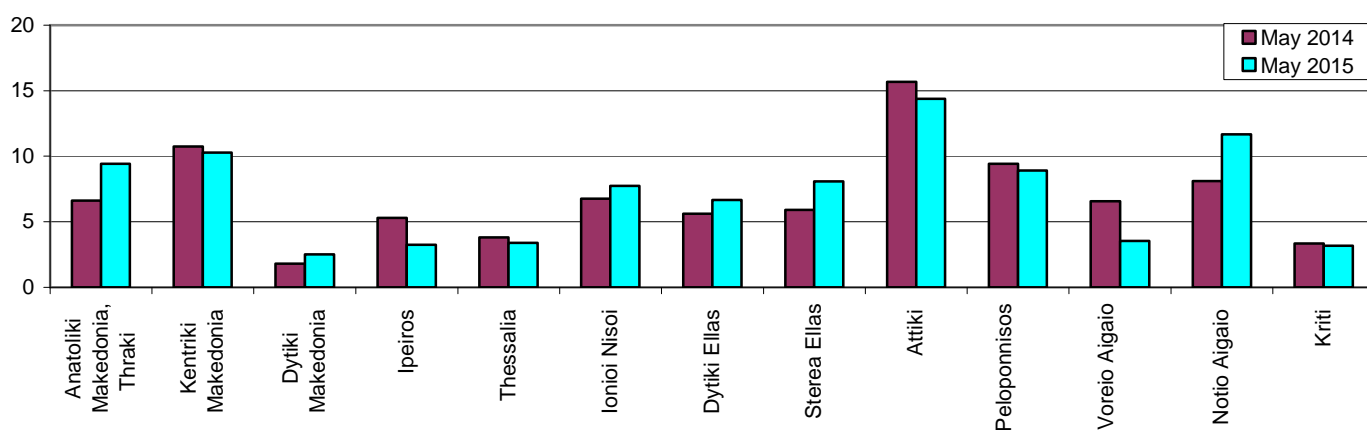


Diagram 2: Persons killed per 100,000 inhabitants

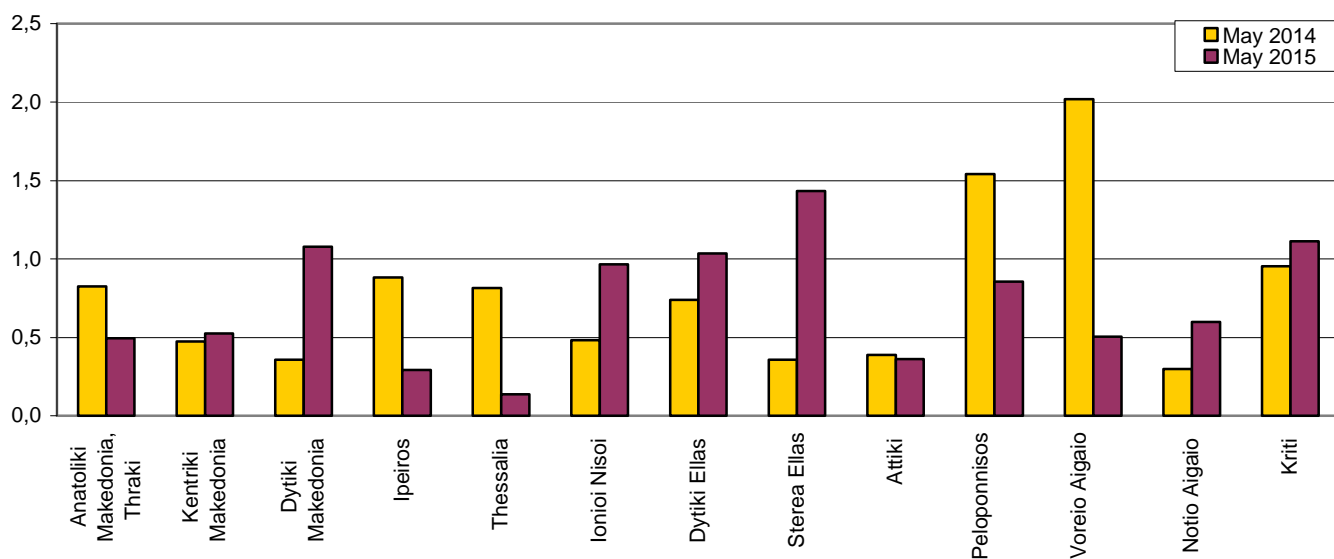


Diagram 3: Persons seriously injured per 100,000 inhabitants

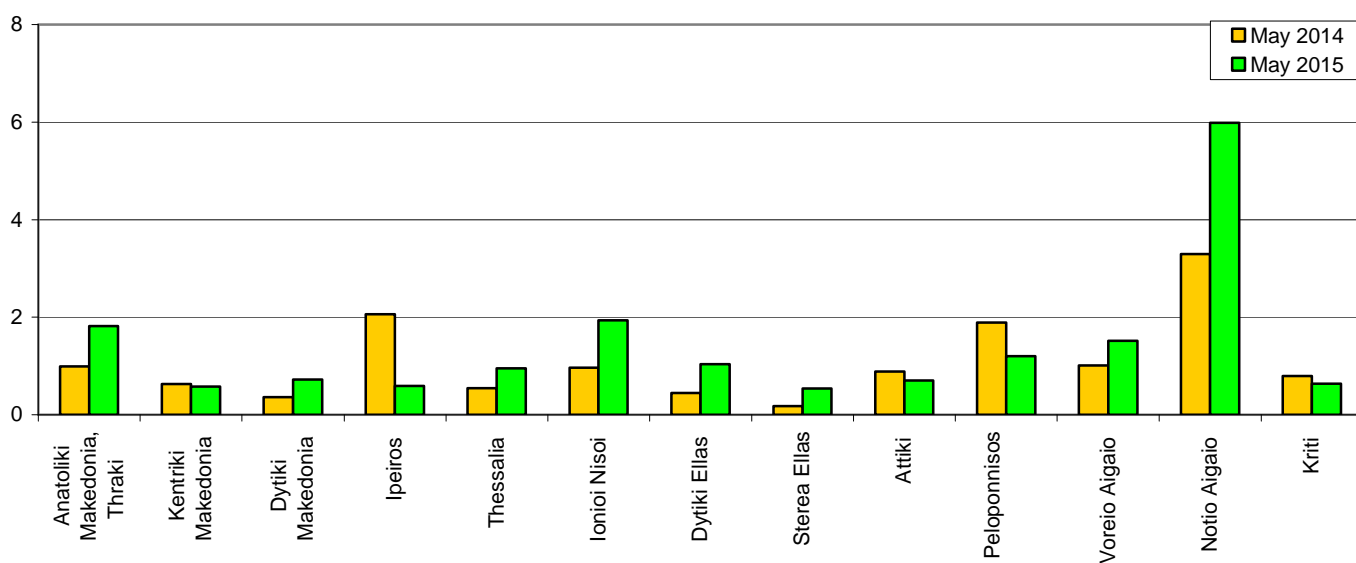
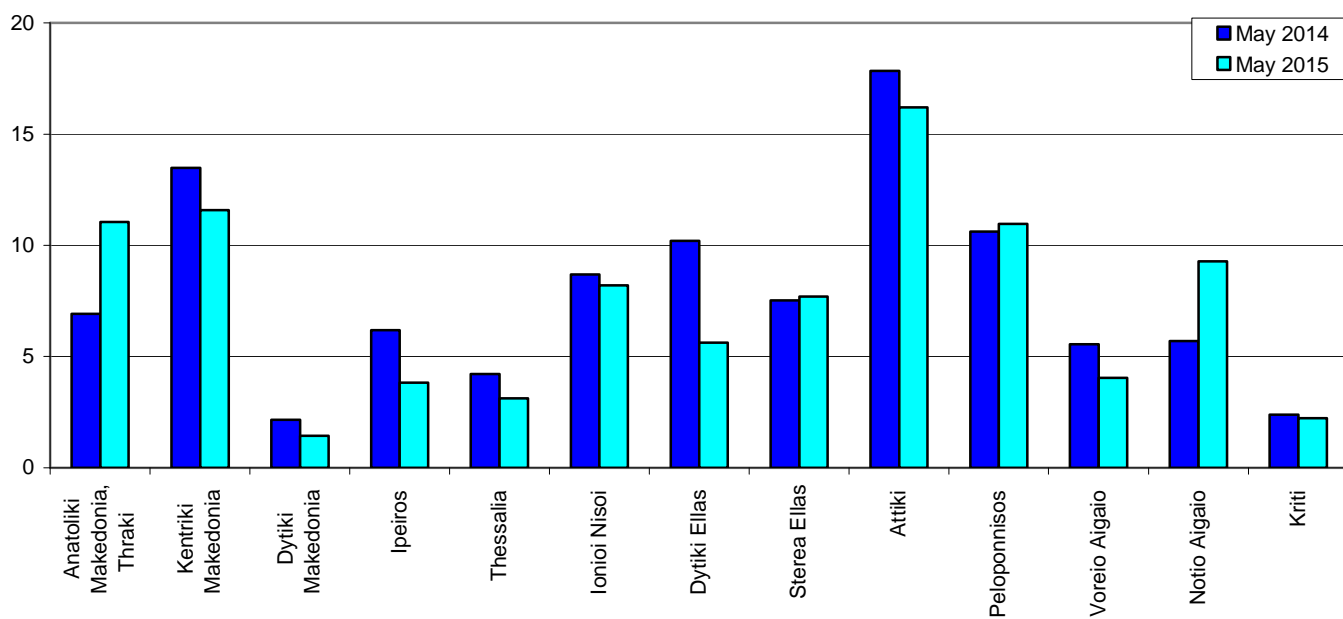


Diagram 4: Persons slightly injured per 100,000 inhabitants



EXPLANATORY NOTES

Survey on Road Accidents	<p>The survey on road accidents is conducted on a monthly basis and it records, for each Department of Greece and for each month separately, the number of accidents by fatal and/or non-fatal accident, as well as the number of persons injured by categories (drivers, passengers, pedestrians). On a yearly basis, road accidents are further analyzed.</p> <p>The competent agencies for filling in/collecting the questionnaires on road accidents are the local Police Authorities and the local Port Authorities of Greece.</p> <p>The lower level of analysis for the place where an injury road accident occurred is the settlement (oikismos), which is described by a 8-digit geographic code. Data are collected on a monthly basis.</p> <p>The main variables are the following: place of accident, kind of road, casualties, conditions of road surface and type of road.</p>
Legal basis	<p>The Survey on Road Traffic Accidents is governed by Council Decision 93/704/EC.</p>
Reference Period	<p>01.5.2015 to 31.5.2015</p>
Availability of Results	<p>Provisional data: 2 months after the accident Final data: 1 year after the reference year</p>
National Definitions	<p>Road accident (injury accident): Any accident involving at least one road motor vehicle in motion on a public road or square to which the public has access (excluding yards, industrial sites or vehicle depot of public transport enterprises), resulting in at least one injured or killed person. Accidents with only material damages are not included.</p> <p>Person killed: Any person killed immediately or dying within 30 days as a result of an injury accident (This national definition applies since 01.01.1996)</p> <p>Person injured: Any person who sustained an injury as result of an injury accident, and who normally needs medical treatment.</p> <p>Seriously injured: Any person who sustained an injury as result of an injury accident, such as brain damages, mutilation, multiple injuries, which may result in lack of awareness or which are life-threatening.</p> <p>Slightly injured: Any person injured who sustained minor and not life-threatening injuries.</p> <p>Vehicle: For the purposes of road accidents statistics, vehicles include motor vehicles, trolleybuses, motorcycles, bicycles, motorbikes, agricultural and road making machines, animal and hand-drawn vehicles. Railway vehicles are excluded, unless the road accident involves one of the aforementioned types of vehicles and therefore, railway vehicles are considered vehicles.</p>
Methodology	<p>The questionnaires of the survey are filled in by the local Police Authorities and the local Port Authorities as well.</p>
References	<p>More information about road accidents is available on ELSTAT's website and more specifically at the link: www.statistics.gr > Statistical Themes > Health – Social protection > Accidents > Road Traffic Accidents.</p> <p>It should be noted that previous press releases and time series are available on ELSTAT's website: www.statistics.gr</p>