



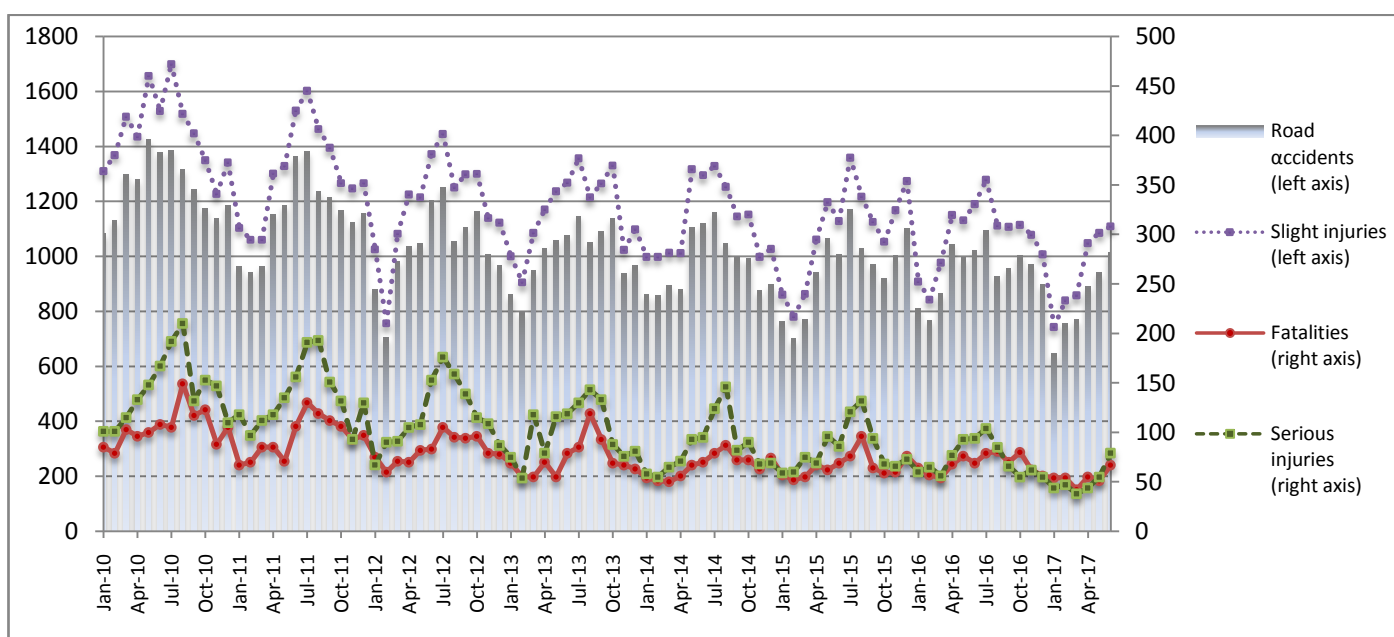
## PRESS RELEASE

### ROAD ACCIDENTS: June 2017

The Hellenic Statistical Authority (ELSTAT) announces data on Road Accidents for June 2017. In particular, the road traffic accidents which occurred in Greece, resulting in death or injury, decreased by 0.8% in comparison with the corresponding month of 2016 (1,014 road accidents in June 2017, against 1,022 road accidents in June 2016).

The casualties of the injury-causing accidents that occurred in June 2017 were as follows: 67 deaths, 79 serious injuries and 1,110 slight injuries. In contrast, in June 2016 the corresponding figures were: 69 deaths, 94 serious injuries and 1,191 slight injuries. Therefore, road accident casualties in June 2017 decreased by 2.9% for deaths, by 16.0% for serious injuries and by 6.8% for slight injuries.

**Graph 1: Road traffic accidents and casualties,  
January 2010-June 2017**



Provisional data: Aug 16 – June 17

*Data for the reference year are provisional until the finalisation of the annual data, which become final 10 months after the end of the reference year. During these 10 months the provisional data are updated on the basis of the data of the Road Accident Forms which are transmitted to ELSTAT by Police Authorities.*

**Information:**

Social Statistics Division

Justice and Public Order Statistics Section

D. Athanasopoulou

Tel: +30 213 1352767

Fax : +30 213 1352764

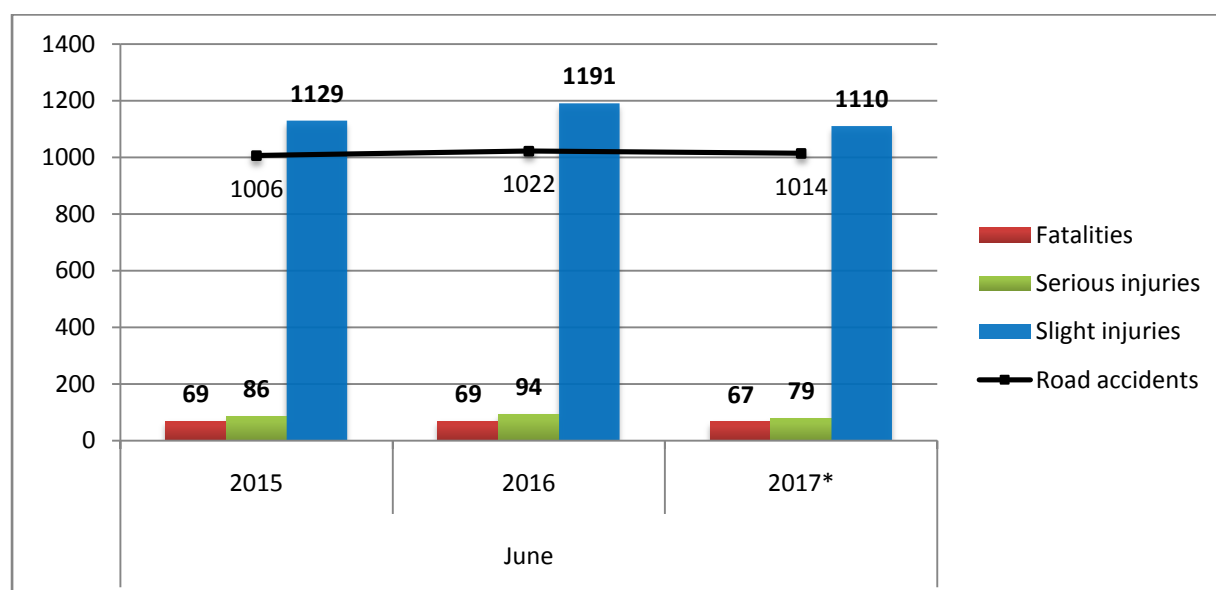
e-mail: [d.athanasopoulou@statistics.gr](mailto:d.athanasopoulou@statistics.gr)

**Table 1: Road traffic accidents and casualties, 2015-2017\***

	June				
	2015	2016	2016/2015 (%)	2017*	2017*/2016 (%)
<b>Road accidents</b>	<b>1,006</b>	<b>1,022</b>	1.6%	<b>1,014</b>	-0.8%
<b>Fatalities</b>	<b>69</b>	<b>69</b>	0.0%	<b>67</b>	-2.9%
<b>Total injuries</b>	<b>1,215</b>	<b>1,285</b>	5.8%	<b>1,189</b>	-7.5%
Serious injuries	86	94	9.3%	79	-16.0%
Slight injuries	1,129	1,191	5.5%	1,110	-6.8%

\* Provisional data

**Graph 2: Road traffic accidents and casualties, 2015-2017\***



\* Provisional data

**Table 2:**  
**Road traffic accidents and casualties, by region and department,**  
**June 2016 – 2017\***

Region and Department	Road accidents			Fatalities			Serious injuries			Slight injuries		
	2016	2017*	%	2016	2017*	%	2016	2017*	%	2016	2017*	%
<b>Greece Total</b>	<b>1,022</b>	<b>1,014</b>	<b>-0.8%</b>	<b>69</b>	<b>67</b>	<b>-2.9%</b>	<b>94</b>	<b>79</b>	<b>-16.0%</b>	<b>1,191</b>	<b>1,110</b>	<b>-6.8%</b>
<b>Anatoliki Makedonia, Thraki (East Macedonia and Thrace)</b>	<b>46</b>	<b>39</b>	<b>-15.2%</b>	<b>8</b>	<b>8</b>	<b>0.0%</b>	<b>9</b>	<b>4</b>	<b>-55.6%</b>	<b>53</b>	<b>37</b>	<b>-30.2%</b>
Drama	5	7	40.0%	0	1		0	1		5	5	
Evros	9	10	11.1%	5	1		3	1		9	11	
Kavala	19	10	-47.4%	1	2		3	0		22	12	
Xanthi	1	7	600.0%	0	2		0	0		6	7	
Rodopi	12	5	-58.3%	2	2		3	2		11	2	
<b>Kentriki Makedonia (Central Macedonia)</b>	<b>226</b>	<b>189</b>	<b>-16.4%</b>	<b>15</b>	<b>12</b>	<b>-20.0%</b>	<b>15</b>	<b>9</b>	<b>-40.0%</b>	<b>240</b>	<b>224</b>	<b>-6.7%</b>
Imathia	7	8	14.3%	1	4		1	1		7	9	
Thessaloniki	188	142	-24.5%	6	2		5	3		205	169	
Kilkis	5	5	0.0%	1	0		0	0		6	8	
Pella	3	6	100.0%	2	0		0	0		2	8	
Pieria	4	4	0.0%	0	2		4	1		0	2	
Serres	9	3	-66.7%	3	1		2	1		8	2	
Chalkidiki	10	21	110.0%	2	3		3	3		12	26	
<b>Dytiki Makedonia (West Macedonia)</b>	<b>10</b>	<b>9</b>	<b>-10.0%</b>	<b>1</b>	<b>1</b>	<b>0.0%</b>	<b>2</b>	<b>1</b>	<b>-50.0%</b>	<b>11</b>	<b>9</b>	<b>-18.2%</b>
Grevena	0	1	-	0	0		0	0		0	1	
Kastoria	4	3	-25.0%	0	0		0	0		7	3	
Kozani	3	4	33.3%	0	1		1	1		3	4	
Florina	3	1	-66.7%	1	0		1	0		1	1	
<b>Ipeiros (Epirus)</b>	<b>14</b>	<b>14</b>	<b>0.0%</b>	<b>1</b>	<b>4</b>	<b>300.0%</b>	<b>5</b>	<b>3</b>	<b>-40.0%</b>	<b>16</b>	<b>9</b>	<b>-43.8%</b>
Arta	0	2	-	0	0		0	1		0	2	
Thesprotia	3	4	33.3%	0	1		2	1		2	3	
Ioannina	6	5	-16.7%	1	2		2	1		4	2	
Preveza	5	3	-40.0%	0	1		1	0		10	2	
<b>Thessalia (Thessaly)</b>	<b>27</b>	<b>20</b>	<b>-25.9%</b>	<b>5</b>	<b>3</b>	<b>-40.0%</b>	<b>4</b>	<b>2</b>	<b>-50.0%</b>	<b>24</b>	<b>26</b>	<b>8.3%</b>
Karditsa	8	6	-25.0%	2	1		2	0		7	11	
Larissa	9	7	-22.2%	0	1		1	1		10	7	
Magnissia	5	0	-100.0%	2	0		1	0		3	0	
Trikala	5	7	40.0%	1	1		0	1		4	8	
<b>Ionioi Nisoi (Ionian Islands)</b>	<b>21</b>	<b>18</b>	<b>-14.3%</b>	<b>0</b>	<b>1</b>	<b>-</b>	<b>4</b>	<b>3</b>	<b>-25.0%</b>	<b>19</b>	<b>17</b>	<b>-10.5%</b>
Zakynthos	2	4	100.0%	0	0		0	1		2	3	
Kerkyra	8	4	-50.0%	0	1		2	1		7	3	
Kefallinia	5	5	0.0%	0	0		0	1		5	5	
Lefkada	6	5	-16.7%	0	0		2	0		5	6	

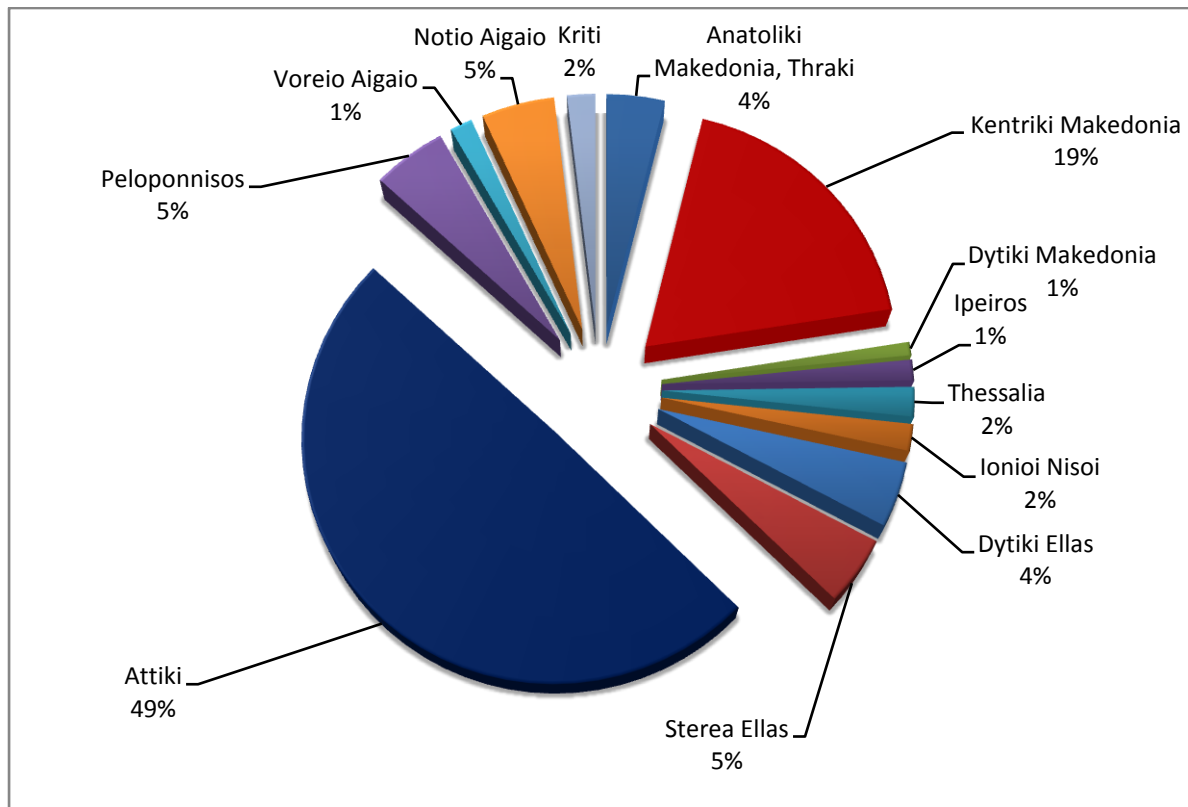
\* Provisional data

**Table 2 (Continued):**  
**Road traffic accidents and casualties, by region and department,**  
**June 2016 – 2017\***

Region and Department	Road accidents			Fatalities			Serious injuries			Slight injuries		
	2016	2017*	%	2016	2017*	%	2016	2017*	%	2016	2017*	%
<b>Dytiki Ellas (West Greece)</b>	<b>50</b>	<b>44</b>	<b>-12.0%</b>	<b>7</b>	<b>3</b>	<b>-57.1%</b>	<b>8</b>	<b>7</b>	<b>-12.5%</b>	<b>64</b>	<b>52</b>	<b>-18.8%</b>
Etolia & Akarnania	12	18	50.0%	2	1		2	4		14	19	
Achaia	25	23	-8.0%	1	2		3	3		36	29	
Ilia	13	3	-76.9%	4	0		3	0		14	4	
<b>Stereia Ellas</b>	<b>39</b>	<b>46</b>	<b>17.9%</b>	<b>6</b>	<b>5</b>	<b>-16.7%</b>	<b>9</b>	<b>5</b>	<b>-44.4%</b>	<b>61</b>	<b>52</b>	<b>-14.8%</b>
Viotia	11	5	-54.5%	3	2		0	0		42	5	
Evia	17	23	35.3%	1	3		6	3		12	29	
Evrytania	0	0	-	0	0		0	0		0	0	
Fthiotida	6	12	100.0%	1	0		1	1		4	13	
Fokida	5	6	20.0%	1	0		2	1		3	5	
<b>Attiki (Attica)</b>	<b>489</b>	<b>502</b>	<b>2.7%</b>	<b>11</b>	<b>15</b>	<b>36.4%</b>	<b>16</b>	<b>19</b>	<b>18.8%</b>	<b>603</b>	<b>559</b>	<b>-7.3%</b>
<b>Peloponnisos (Peloponnese)</b>	<b>46</b>	<b>50</b>	<b>8.7%</b>	<b>6</b>	<b>5</b>	<b>-16.7%</b>	<b>5</b>	<b>7</b>	<b>40.0%</b>	<b>51</b>	<b>51</b>	<b>0.0%</b>
Argolida	8	7	-12.5%	1	1		1	0		9	7	
Arkadia	1	9	800.0%	0	0		0	0		2	12	
Korinthia	21	19	-9.5%	4	1		0	6		22	19	
Lakonia	10	6	-40.0%	0	2		4	1		10	3	
Messinia	6	9	50.0%	1	1		0	0		8	10	
<b>Voreio Aigaio (North Aegean)</b>	<b>4</b>	<b>15</b>	<b>275.0%</b>	<b>1</b>	<b>2</b>	<b>100.0%</b>	<b>1</b>	<b>2</b>	<b>100.0%</b>	<b>6</b>	<b>15</b>	<b>150.0%</b>
Lesvos	3	4	33.3%	1	2		1	1		4	4	
Samos	0	7	-	0	0		0	0		0	7	
Chios	1	4	300.0%	0	0		0	1		2	4	
<b>Notio Aigaio (South Aegean)</b>	<b>36</b>	<b>49</b>	<b>36.1%</b>	<b>5</b>	<b>5</b>	<b>0.0%</b>	<b>10</b>	<b>9</b>	<b>-10.0%</b>	<b>34</b>	<b>46</b>	<b>35.3%</b>
Dodekanissos	17	24	41.2%	2	2		4	3		17	23	
Kyklades	19	25	31.6%	3	3		6	6		17	23	
<b>Kriti (Crete)</b>	<b>14</b>	<b>19</b>	<b>35.7%</b>	<b>3</b>	<b>3</b>	<b>0.0%</b>	<b>6</b>	<b>8</b>	<b>33.3%</b>	<b>9</b>	<b>13</b>	<b>44.4%</b>
Iraklio	6	10	66.7%	1	1		3	5		2	7	
Lassithi	1	0	-100.0%	0	0		0	0		1	0	
Rethymno	3	2	-33.3%	2	0		1	1		2	1	
Chania	4	7	75.0%	0	2		2	2		4	5	

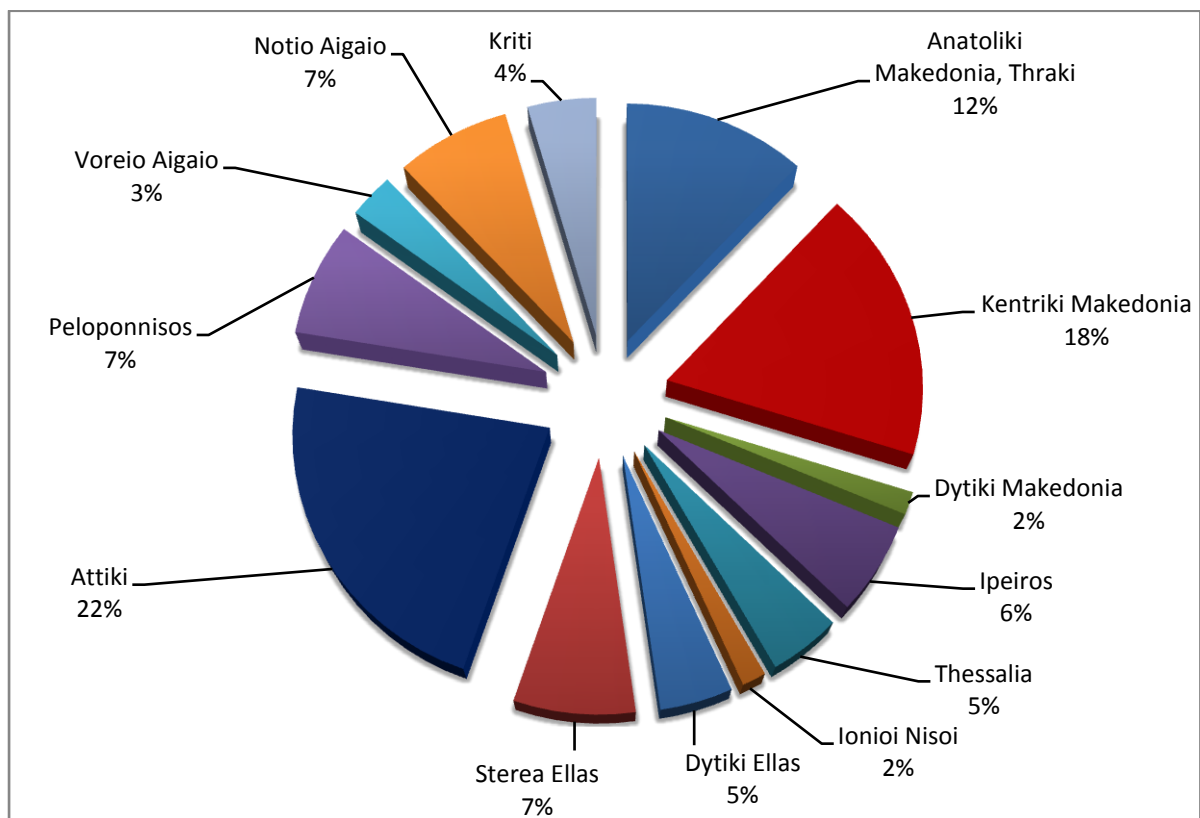
\* Provisional data

**Graph 3: Road traffic accidents by region,  
June 2017 \***



\* Provisional data

**Graph 4: Fatalities by region,  
June 2017 \***



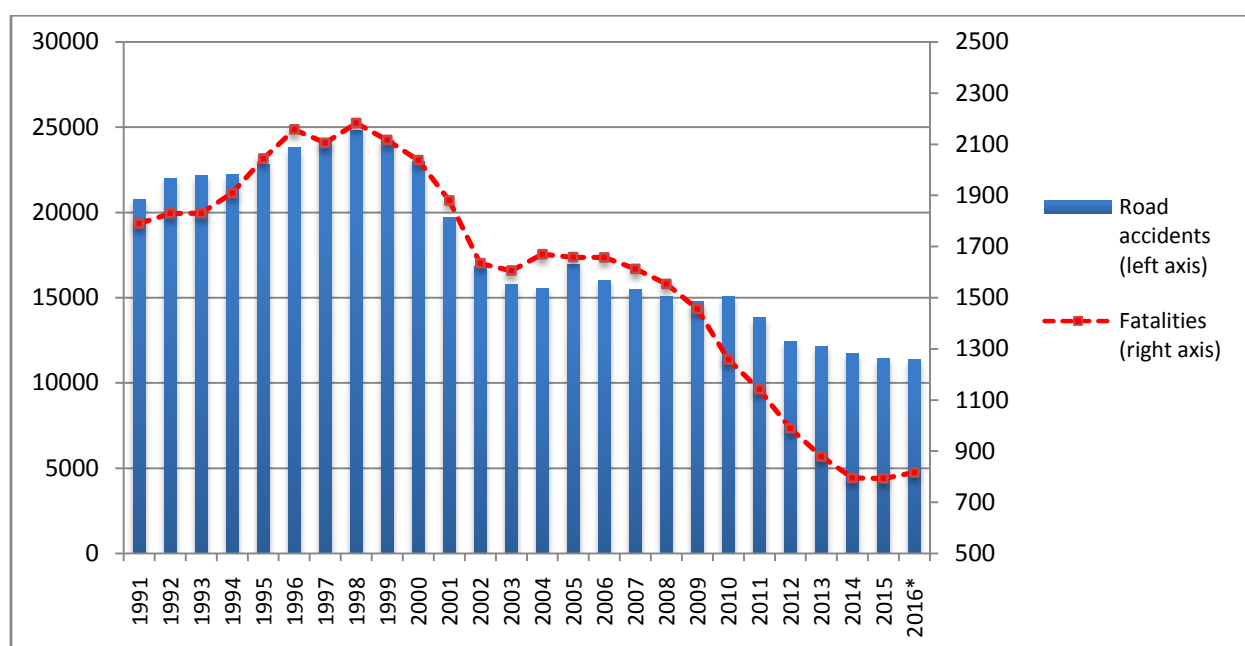
\* Provisional data

**Table 3: Road Traffic Accidents and casualties for the period January-June 2015, 2016 and 2017\***

	2015		2016		2017 *
	January - June	Total year	January - June	Total year *	January - June
<b>Road Accidents</b>	5,245	<b>11,440</b>	5,505	<b>11,353</b>	5,019
<b>Annual Change (%) :</b>			5.0%	-0.8%	-8.8%
<b>Fatalities</b>	362	<b>793</b>	388	<b>816</b>	323
<b>Annual Change (%) :</b>			7.2%	2.9%	-16.8%
<b>Serious injuries</b>	445	<b>999</b>	445	<b>872</b>	307
<b>Annual Change (%) :</b>			0.0%	-12.7%	-31.0%
<b>Slight injuries</b>	5,895	<b>13,097</b>	6,204	<b>12,905</b>	5,688
<b>Annual Change (%) :</b>			5.2%	-1.5%	-8.3%

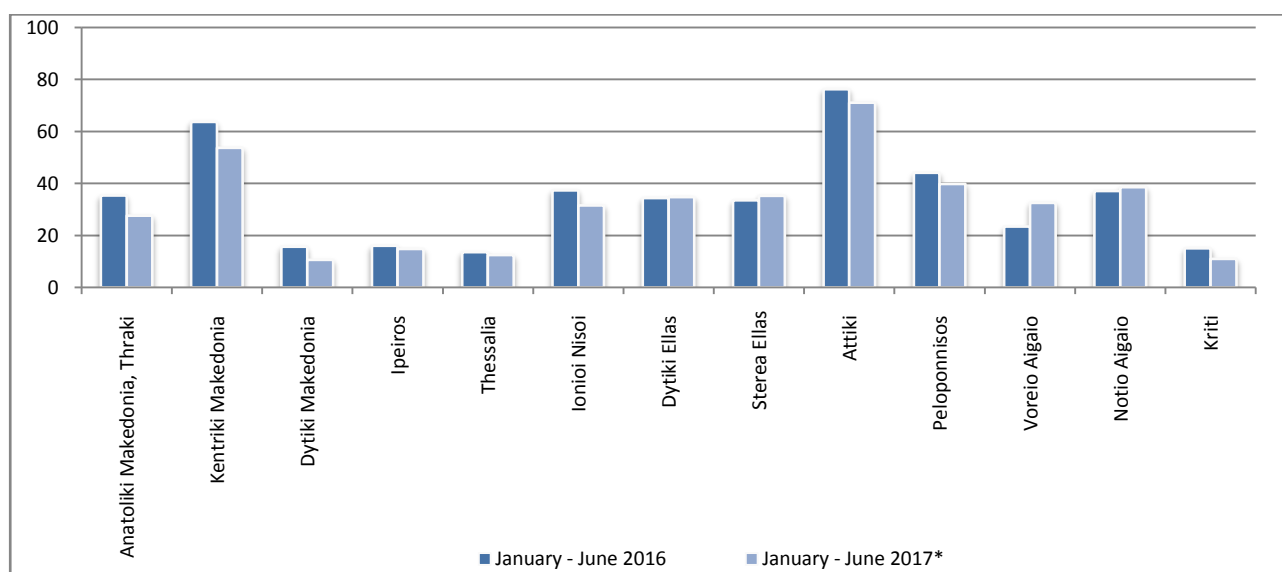
\* Provisional data

**Graph 5: Total Road traffic accidents and fatalities, 1991-2016\***



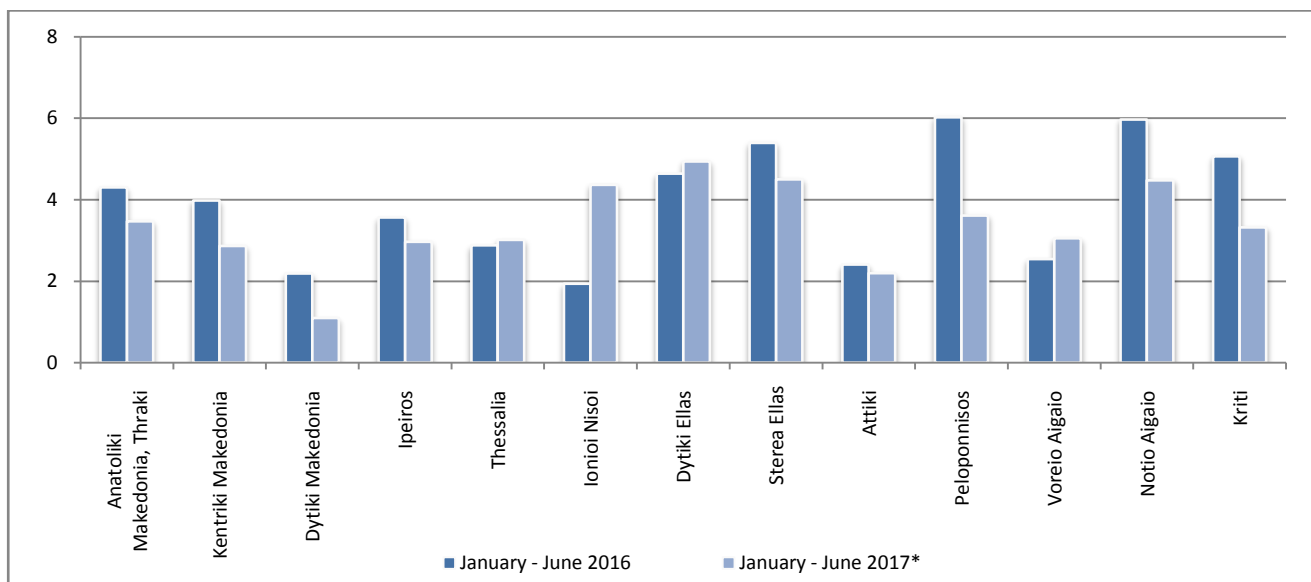
\* Provisional data: Aug 16 – Dec 16

**Graph 6: Road accidents per 100,000 inhabitants**

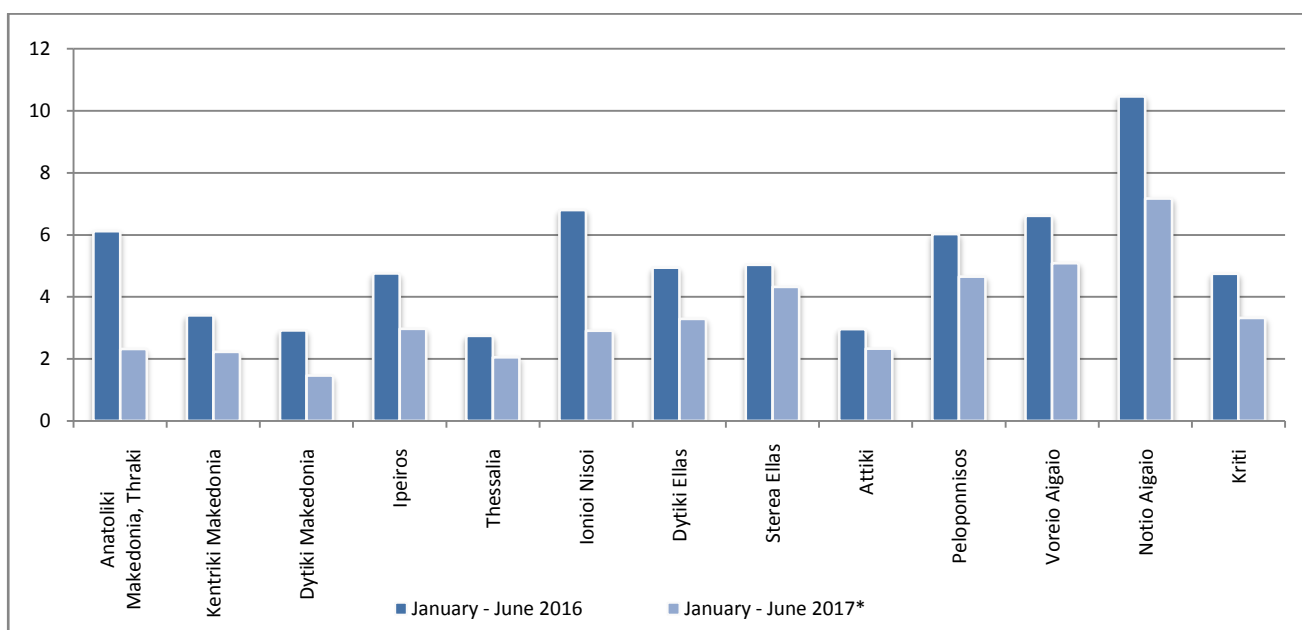


\* Provisional data

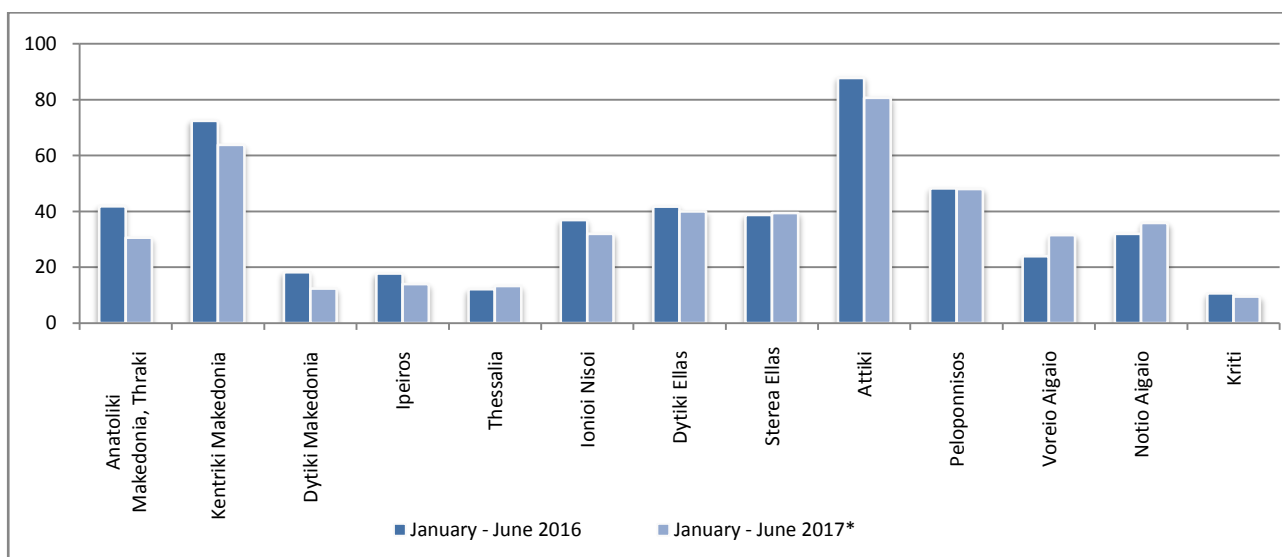
**Graph 7: Fatalities per 100,000 inhabitants**



**Graph 8: Serious injuries per 100,000 inhabitants**



**Graph 9: Slight injuries per 100,000 inhabitants**



\* Provisional data

## Explanatory Notes

<b>Survey on Road Accidents</b>	<p>The survey on road accidents is conducted on a monthly basis and it records, for each department of Greece and for each month separately, the number of accidents resulting in death or injury, as well as the number of persons injured by categories (drivers, passengers, pedestrians).</p> <p>On a yearly basis, road accidents are further analyzed. The competent agencies for filling in/collecting the forms on road accidents are the local Police Authorities and the local Port Authorities of Greece.</p> <p>The lower level of analysis for the place where an injury road accident occurred is the settlement (oikismos), which is described by a 8-digit geographic code. Data are collected on a monthly basis. The main variables are the following: place of accident, kind of road, casualties, conditions of road surface and type of road.</p>
<b>Legal basis</b>	<p>The Survey on Road Traffic Accidents is governed by Council Decision 93/704 of the European Community.</p>
<b>Reference Period</b>	<p>Monthly.</p>
<b>Availability of Data</b>	<p>Provisional data are available 2 months after the reference month.</p> <p>Final data are available 10 months after the reference year.</p>
<b>National Definitions</b>	<p><b>Road accident</b> (injury accident): Any accident involving at least one road motor vehicle in motion on a public road or square to which the public has access (excluding yards, industrial sites or vehicle depot of public transport enterprises), resulting in at least one injured or killed person. Accidents with only material damages are not included.</p> <p><b>Fatality (Death):</b> Any person killed immediately or dying within 30 days as a result of an injury accident (This national definition applies since 01.01.1996)</p> <p><b>Person injured:</b> Any person who sustained an injury as result of an injury accident, and who normally needs medical treatment.</p> <p><b>Serious injury:</b> Any person who sustained an injury as result of an injury accident, such as brain damages, mutilation, multiple injuries, which may result in lack of awareness or which are life-threatening.</p> <p><b>Slight injury:</b> Any person injured who sustained minor and not life-threatening injuries.</p> <p><b>Vehicle:</b> Include motor vehicles, trolleybuses, motorcycles, bicycles, motorbikes, agricultural and road making machines, animal and hand-drawn vehicles. Railway vehicles are excluded, unless the road accident involves at least one of the aforementioned types of vehicles and therefore, railway vehicles are considered vehicles.</p>
<b>Methodology</b>	<p>The forms of the survey are filled in by the local Police Authorities and the local Port Authorities as well.</p>
<b>References</b>	<p>More information about road accidents is available on ELSTAT's website and more specifically at the link: <a href="http://www.statistics.gr">www.statistics.gr</a> &gt; Population &amp; Social Conditions &gt; Accidents &gt; Road Traffic Accidents.</p> <p>It should be noted that previous press releases and time series are available on ELSTAT's website: <a href="http://www.statistics.gr">www.statistics.gr</a></p>