



PRESS RELEASE

INDUSTRIAL PRODUCTION INDEX: May 2017, y-o-y increase of 5.4%

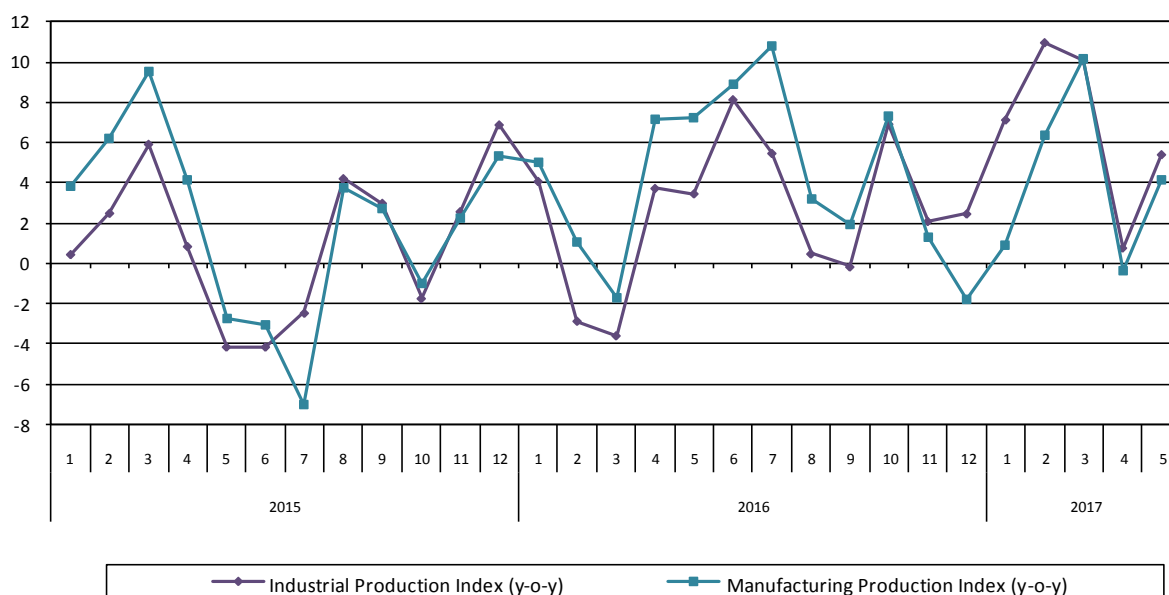
The evolution of the Industrial Production Index (IPI) with base year 2010=100.0 in May 2017, on the basis of provisional and working day adjusted data, is as follows:

The Overall Industrial Production Index in May 2017 recorded an increase of 5.4% compared with May 2016. The corresponding annual rate of change of the Overall IPI in May 2016 was 3.5% (Table 1).

The average Overall Industrial Production Index for the period from January to May 2017 recorded an increase of 6.8% compared with the average IPI of the period from January to May 2016 (Table 2).

The seasonally adjusted Overall Industrial Production Index in May 2017 recorded a decrease of 0.03% compared with April 2017 (Table 4).

Graph 1. Evolution of annual rates of change (y-o-y) of the Industrial Production Index and the Manufacturing Production Index (%)



Information:

Economic and Short-Term Indices Division
Production Indices Section

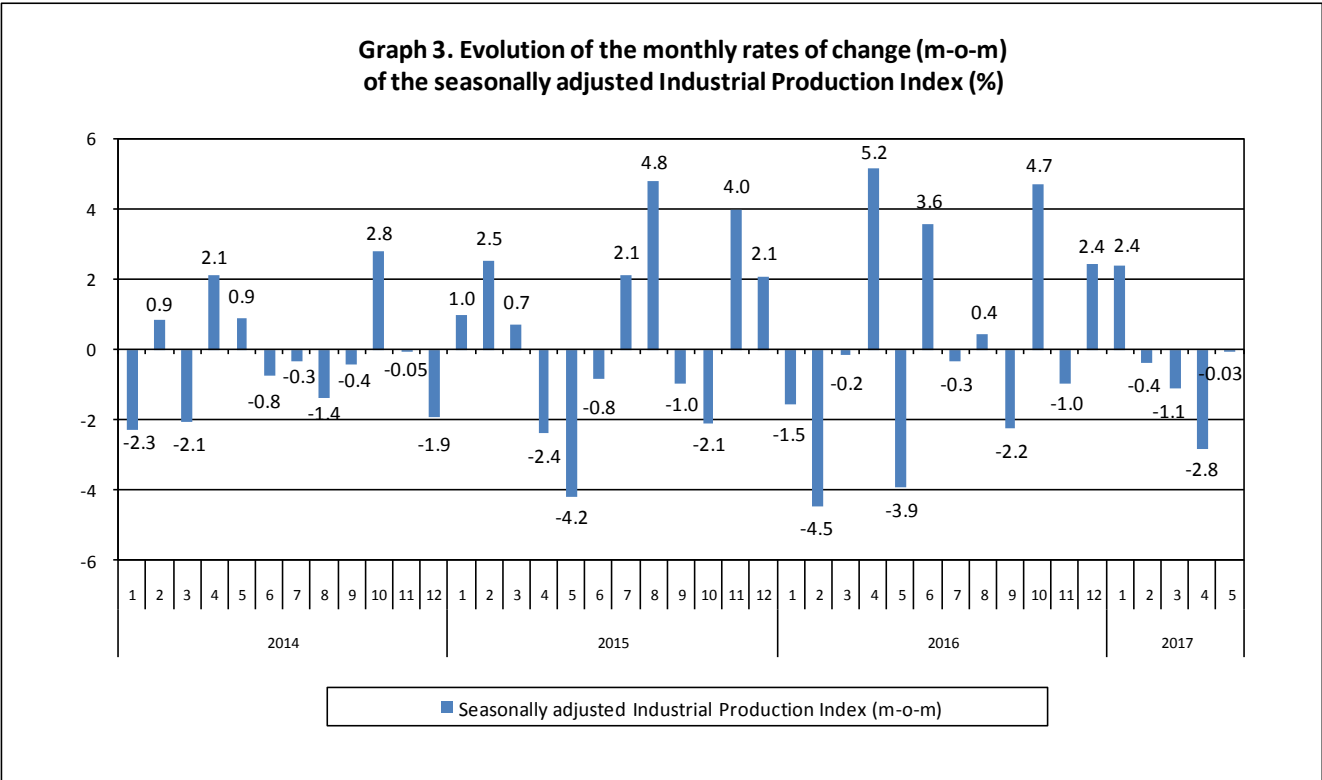
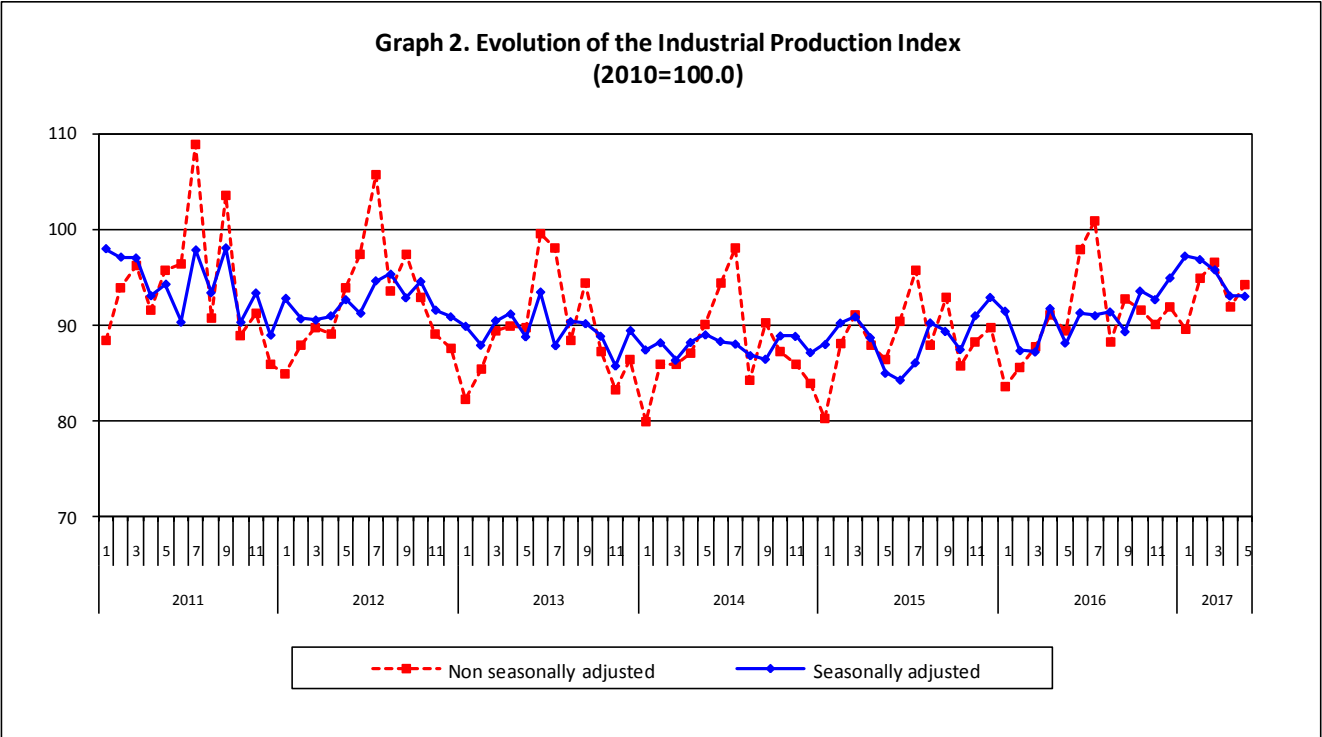
Diamantaki Aikaterini, Thymoglou Georgia

Tel: +30 213 135 2122, +30 213 135 2737

Fax: +30 213 135 2738

E-mail: a.diamantaki@statistics.gr, g.thymoglou@statistics.gr

The following graphs depict the evolution of the seasonally and non-seasonally adjusted Overall Industrial Production Index, as well as the monthly rates of change (m-o-m) of the seasonally adjusted index.



It should be noted that the time series with the seasonally adjusted indices is recalculated every time a new observation is added in the time series. Therefore, the seasonally adjusted data differ from the data published in the previous Press Release.

Evolution of the Industrial Production Index in May 2017

I. Annual changes: May 2017/ May 2016 (Table 1)

The 5.4% increase of the working day adjusted Overall IPI in May 2017, compared with the corresponding index in May 2016, is due to the annual changes of the sub-indices in the following industrial sections:

1. Increase of:

- 6.8% in the Mining and Quarrying Production Index.

The increase was the result of the annual changes of the sub-indices in the following 2-digit divisions: mining of coal and lignite, mining of metal ores.

- 4.2% in the Manufacturing Production Index.

The increase was the result of the annual changes of the sub-indices in the following 2-digit divisions: leather and related products, basic pharmaceutical products and pharmaceutical preparations, basic metals, computers, electronic and optical products.

- 12.6% in the Electricity Production Index.

2. Decrease of:

- 1.1% in the Water Supply Production Index.

II. Rates of change of the average index in the period January – May 2017 compared with the corresponding index of the period January – May 2016 (Table 2)

The 6.8% increase of the working day adjusted Overall IPI in the 5-month period January – May 2017, compared with the corresponding index in January – May 2016, is due to the corresponding rates of change of the sub-indices in the following industrial sections:

1. Increase of:

- 11.8% in the Mining and Quarrying Production Index.
- 4.3% in the Manufacturing Production Index.
- 17.4% in the Electricity Production Index.

2. Decrease of:

- 0.4% in the Water Supply Production Index.

III. Monthly changes: May 2017/ April 2017 (Table 4)

The 0.03% decrease of the seasonally adjusted Overall IPI in May 2017, compared with the corresponding index in April 2017, is due to the monthly changes of the sub-indices in the following industrial sections:

1. Decrease of:

- 9.3% in the Mining and Quarrying Production Index.
- 1.9% in the Water Supply Production Index.

2. Increase of:

- 0.8% in the Manufacturing Production Index.
- 6.1% in the Electricity Production Index.

The following graph depicts the evolution of the Industrial Production Index and the Industrial Sections Indices.

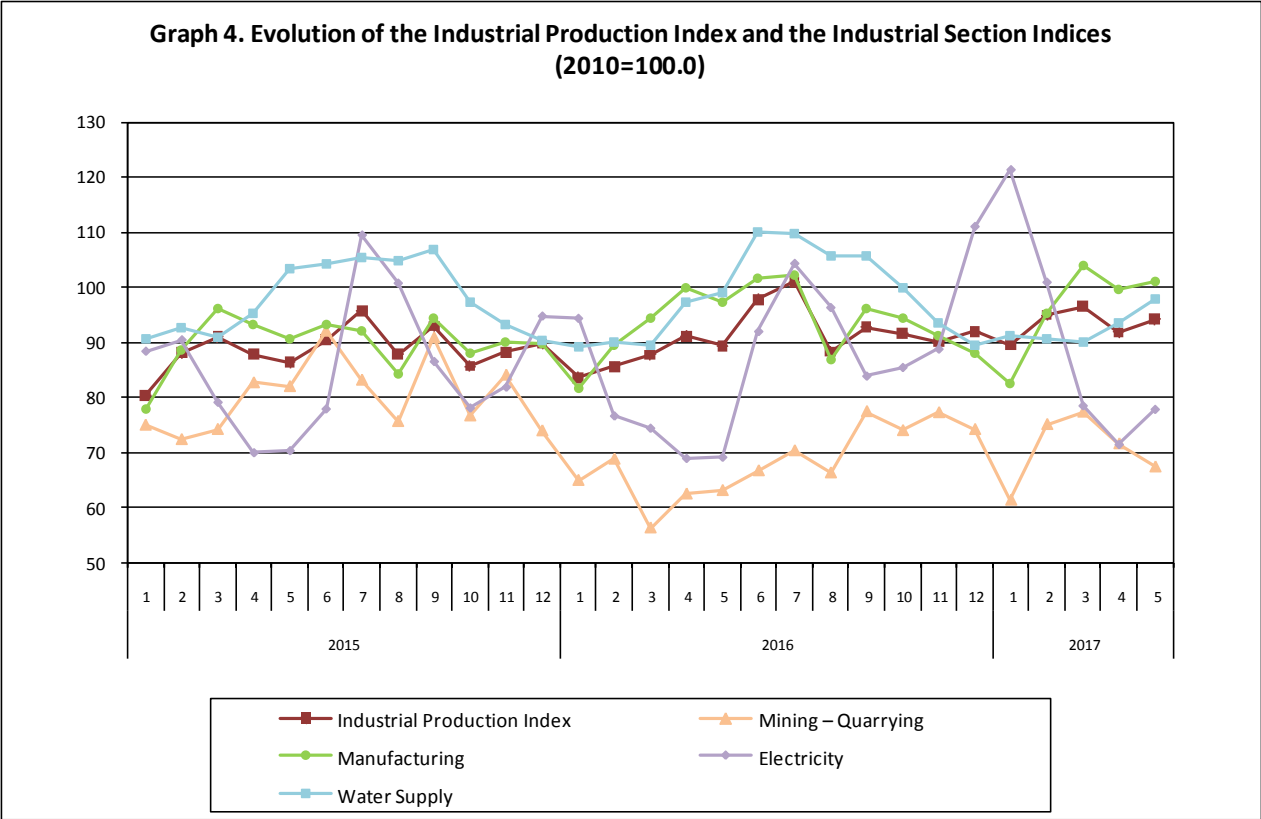


Table 1. Annual rates of change of the Industrial Production Index*(Working day adjusted data, according to the real number of working days)***Base year: 2010=100.0**

Code		Division	May			Rate of change (%)	
			2017*	2016	2015	2017/2016	2016/2015
OVERALL INDEX			94.18	89.36	86.37	5.4	3.5
B	MINING AND QUARRYING		67.35	63.05	81.98	6.8	-23.1
05	Mining of coal and lignite		53.31	42.35	75.38	25.9	-43.8
06	Extraction of crude petroleum and natural gas		91.94	177.10	49.04	-48.1	261.1
07	Mining of metal ores		91.85	85.86	84.39	7.0	1.7
08	Other mining and quarrying products		86.72	89.21	98.96	-2.8	-9.9
C	MANUFACTURING		101.20	97.15	90.61	4.2	7.2
10	Food		99.31	96.96	93.53	2.4	3.7
11	Beverages		98.38	109.36	108.41	-10.0	0.9
12	Tobacco products		116.13	121.36	111.62	-4.3	8.7
13	Textiles		69.00	74.27	69.12	-7.1	7.4
14	Wearing apparel		48.51	60.08	67.16	-19.3	-10.5
15	Leather and related products		55.53	44.85	45.30	23.8	-1.0
16	Wood and cork		49.06	51.82	41.63	-5.3	24.5
17	Paper and paper products		102.69	101.70	106.01	1.0	-4.1
18	Printing and recording services		52.87	51.49	57.79	2.7	-10.9
19	Coke and refined petroleum products		138.59	133.51	85.89	3.8	55.4
20	Chemicals and chemical products		111.19	109.40	104.56	1.6	4.6
21	Basic pharmaceutical products and pharmaceutical preparations		118.62	99.47	100.20	19.3	-0.7
22	Rubber and plastic products		96.89	92.98	104.61	4.2	-11.1
23	Other non-metallic mineral products		67.05	70.55	69.88	-5.0	1.0
24	Basic metals		140.76	102.42	123.52	37.4	-17.1
25	Fabricated metal products		92.11	84.26	81.01	9.3	4.0
26	Computers, electronic and optical products		130.30	79.33	144.61	64.3	-45.1
27	Electrical equipment		86.98	81.13	75.41	7.2	7.6
28	Machinery and equipment n. e. c.		104.81	108.48	91.63	-3.4	18.4
29	Motor vehicles, trailers and semi-trailers		68.14	87.18	47.50	-21.8	83.5
30	Other transport equipment		62.80	80.97	73.21	-22.4	10.6
31	Furniture		59.71	62.14	54.42	-3.9	14.2
32	Other manufactured goods		92.34	101.01	98.01	-8.6	3.1
33	Repair and installation services of machinery and equipment		43.18	44.41	51.13	-2.8	-13.1
D	ELECTRICITY		77.79	69.09	70.28	12.6	-1.7
35	Production and distribution of electricity		77.79	69.09	70.28	12.6	-1.7
E	WATER SUPPLY		97.88	98.98	103.46	-1.1	-4.3
36	Treatment and supply services of natural water		97.88	98.98	103.46	-1.1	-4.3
MAIN INDUSTRIAL GROUPINGS							
1	Energy		93.97	87.38	78.12	7.5	11.8
2	Intermediate goods		97.63	90.31	95.18	8.1	-5.1
3	Capital goods		68.10	67.86	67.08	0.4	1.2
4	Consumer Durables		68.23	62.77	61.18	8.7	2.6
5	Consumer Non-Durables		98.62	97.65	95.48	1.0	2.3

* Provisional data

Note: The indices are rounded up to two decimal figures when published and percentage changes up to one decimal figure when published.

Table 2. Average indices of the period January – May and rates of change (%) of the Industrial Production Index
(Working day adjusted data, according to the real number of working days)

Base year: 2010=100.0

Code		Division	Average indices of the period Jan.-May			Rate of change (%)	
			2017*	2016	2015	2017/2016	2016/2015
OVERALL INDEX			93.42	87.48	86.73	6.8	0.9
B	MINING AND QUARRYING		70.52	63.07	77.22	11.8	-18.3
05	Mining of coal and lignite		66.67	50.25	78.62	32.7	-36.1
06	Extraction of crude petroleum and natural gas		106.14	129.70	57.87	-18.2	124.1
07	Mining of metal ores		74.51	81.06	74.45	-8.1	8.9
08	Other mining and quarrying products		74.08	78.17	77.05	-5.2	1.5
C	MANUFACTURING		96.48	92.53	89.25	4.3	3.7
10	Food		93.22	92.18	89.72	1.1	2.7
11	Beverages		79.94	90.24	86.21	-11.4	4.7
12	Tobacco products		99.65	135.38	112.68	-26.4	20.1
13	Textiles		67.90	69.25	65.88	-2.0	5.1
14	Wearing apparel		47.69	50.56	58.07	-5.7	-12.9
15	Leather and related products		52.40	52.37	49.27	0.1	6.3
16	Wood and cork		41.40	41.05	35.57	0.9	15.4
17	Paper and paper products		98.26	97.84	102.84	0.4	-4.9
18	Printing and recording services		47.31	52.86	55.43	-10.5	-4.6
19	Coke and refined petroleum products		137.25	126.60	115.03	8.4	10.1
20	Chemicals and chemical products		108.62	109.07	101.81	-0.4	7.1
21	Basic pharmaceutical products and pharmaceutical preparations		126.70	112.26	107.45	12.9	4.5
22	Rubber and plastic products		94.09	92.62	96.01	1.6	-3.5
23	Other non-metallic mineral products		60.70	60.76	54.08	-0.1	12.4
24	Basic metals		138.27	106.97	110.45	29.3	-3.2
25	Fabricated metal products		88.37	79.37	78.16	11.3	1.5
26	Computers, electronic and optical products		115.78	91.46	136.91	26.6	-33.2
27	Electrical equipment		79.83	70.81	71.71	12.7	-1.3
28	Machinery and equipment n. e. c.		92.40	91.58	83.92	0.9	9.1
29	Motor vehicles, trailers and semi-trailers		72.43	40.73	61.39	77.8	-33.7
30	Other transport equipment		64.13	74.08	70.17	-13.4	5.6
31	Furniture		47.06	50.65	45.11	-7.1	12.3
32	Other manufactured goods		88.34	88.95	89.50	-0.7	-0.6
33	Repair and installation services of machinery and equipment		46.42	45.97	51.02	1.0	-9.9
D	ELECTRICITY		89.98	76.65	79.62	17.4	-3.7
35	Production and distribution of electricity		89.98	76.65	79.62	17.4	-3.7
E	WATER SUPPLY		92.65	92.99	94.54	-0.4	-1.6
36	Treatment and supply services of natural water		92.65	92.99	94.54	-0.4	-1.6
MAIN INDUSTRIAL GROUPINGS							
1	Energy		100.92	89.50	90.48	12.8	-1.1
2	Intermediate goods		92.43	86.07	84.36	7.4	2.0
3	Capital goods		66.59	61.13	67.21	8.9	-9.0
4	Consumer Durables		56.95	54.14	55.13	5.2	-1.8
5	Consumer Non-Durables		92.02	93.87	89.98	-2.0	4.3

* Provisional data

Note: The indices are rounded up to two decimal figures when published and percentage changes up to one decimal figure when published.

Table 3. Monthly rate of change of the Industrial Production Index*(Working day adjusted data, according to the real number of working days)*

Base year: 2010=100.0

Code	Division	May 2017*	April 2017**	Rate of change (%) May 2017/ Apr. 2017
OVERALL INDEX		94.18	91.83	2.6
B	MINING AND QUARRYING	67.35	71.56	-5.9
05	Mining of coal and lignite	53.31	64.90	-17.9
06	Extraction of crude petroleum and natural gas	91.94	97.06	-5.3
07	Mining of metal ores	91.85	86.56	6.1
08	Other mining and quarrying products	86.72	78.09	11.0
C	MANUFACTURING	101.20	99.58	1.6
10	Food	99.31	95.21	4.3
11	Beverages	98.38	98.42	-0.04
12	Tobacco products	116.13	92.01	26.2
13	Textiles	69.00	68.31	1.0
14	Wearing apparel	48.51	60.84	-20.3
15	Leather and related products	55.53	60.20	-7.8
16	Wood and cork	49.06	43.12	13.8
17	Paper and paper products	102.69	94.29	8.9
18	Printing and recording services	52.87	49.73	6.3
19	Coke and refined petroleum products	138.59	137.87	0.5
20	Chemicals and chemical products	111.19	115.02	-3.3
21	Basic pharmaceutical products and pharmaceutical preparations	118.62	129.99	-8.7
22	Rubber and plastic products	96.89	96.59	0.3
23	Other non-metallic mineral products	67.05	65.44	2.5
24	Basic metals	140.76	130.86	7.6
25	Fabricated metal products	92.11	85.91	7.2
26	Computers, electronic and optical products	130.30	111.15	17.2
27	Electrical equipment	86.98	82.79	5.1
28	Machinery and equipment n. e. c.	104.81	98.16	6.8
29	Motor vehicles, trailers and semi-trailers	68.14	31.76	114.5
30	Other transport equipment	62.80	83.51	-24.8
31	Furniture	59.71	52.86	12.9
32	Other manufactured goods	92.34	114.47	-19.3
33	Repair and installation services of machinery and equipment	43.18	54.84	-21.3
D	ELECTRICITY	77.79	71.40	8.9
35	Production and distribution of electricity	77.79	71.40	8.9
E	WATER SUPPLY	97.88	93.41	4.8
36	Treatment and supply services of natural water	97.88	93.41	4.8
MAIN INDUSTRIAL GROUPINGS				
1	Energy	93.97	91.05	3.2
2	Intermediate goods	97.63	94.20	3.6
3	Capital goods	68.10	68.13	-0.04
4	Consumer Durables	68.23	60.97	11.9
5	Consumer Non-Durables	98.62	97.87	0.8

* Provisional data **Revised data

Note: The indices are rounded up to two decimal figures when published and percentage changes up to one decimal figure when published.

Table 4. Monthly rate of change of the seasonally adjusted Industrial Production Index

Base year: 2010=100.0

Code	Division	May 2017*	April 2017**	Rate of change (%) May 2017/ Apr. 2017
OVERALL INDEX		93.01	93.04	-0.03
B	MINING AND QUARRYING	66.53	73.38	-9.3
05	Mining of coal and lignite	56.90	68.37	-16.8
06	Extraction of crude petroleum and natural gas	92.42	98.89	-6.5
07	Mining of metal ores	82.61	82.39	0.3
08	Other mining and quarrying products	79.02	79.25	-0.3
C	MANUFACTURING	97.08	96.32	0.8
10	Food	96.92	95.69	1.3
11	Beverages	79.17	78.80	0.5
12	Tobacco products	109.26	98.09	11.4
13	Textiles	63.33	62.30	1.7
14	Wearing apparel	42.67	48.23	-11.5
15	Leather and related products	53.71	49.38	8.8
16	Wood and cork	43.85	44.12	-0.6
17	Paper and paper products	97.88	98.21	-0.3
18	Printing and recording services	50.82	43.83	15.9
19	Coke and refined petroleum products	139.18	141.76	-1.8
20	Chemicals and chemical products	100.68	99.14	1.6
21	Basic pharmaceutical products and pharmaceutical preparations	124.37	119.81	3.8
22	Rubber and plastic products	90.89	92.35	-1.6
23	Other non-metallic mineral products	61.37	63.87	-3.9
24	Basic metals	133.74	129.14	3.6
25	Fabricated metal products	86.12	83.98	2.6
26	Computers, electronic and optical products	134.13	114.89	16.8
27	Electrical equipment	79.56	80.88	-1.6
28	Machinery and equipment n. e. c.	97.06	87.24	11.3
29	Motor vehicles, trailers and semi-trailers	75.39	42.13	79.0
30	Other transport equipment	64.59	73.86	-12.6
31	Furniture	52.46	49.27	6.5
32	Other manufactured goods	85.85	91.86	-6.5
33	Repair and installation services of machinery and equipment	55.82	58.34	-4.3
D	ELECTRICITY	86.30	81.34	6.1
35	Production and distribution of electricity	86.30	81.34	6.1
E	WATER SUPPLY	95.42	97.26	-1.9
36	Treatment and supply services of natural water	95.42	97.26	-1.9
MAIN INDUSTRIAL GROUPINGS				
1	Energy	100.12	100.62	-0.5
2	Intermediate goods	90.53	91.55	-1.1
3	Capital goods	70.20	69.14	1.5
4	Consumer Durables	60.95	55.69	9.5
5	Consumer Non-Durables	92.41	91.42	1.1

* Provisional data ** Revised data

Notes:

1. The indices are rounded up to two decimal figures when published and percentage changes up to one decimal figure when published.
2. The whole time-series with seasonally adjusted indices is recalculated every time a new observation is added in the time-series.

Table 5. Evolution of the Overall Industrial Production Index

(Working day adjusted data, according to the real number of working days)

Base year: 2010=100.0

Year and month		Overall Index	Monthly rate of change (%)	Annual rate of change (%)	12-month average indices (moving average)	Rate of change of the 12-month average indices (%)
2015:	1	80.34	-4.3	0.4	87.80	-1.7
	2	88.08	9.6	2.5	87.98	-1.5
	3	90.99	3.3	5.9	88.40	-0.7
	4	87.86	-3.4	0.8	88.46	-0.4
	5	86.37	-1.7	-4.1	88.15	-0.8
	6	90.46	4.7	-4.1	87.83	-0.7
	7	95.71	5.8	-2.5	87.62	-0.9
	8	87.87	-8.2	4.2	87.92	-0.2
	9	92.93	5.8	3.0	88.15	0.5
	10	85.68	-7.8	-1.7	88.02	0.3
	11	88.16	2.9	2.6	88.20	0.3
	12	89.77	1.8	6.9	88.68	1.0
Annual average		88.68	–	–	88.68	1.0
2016:	1	83.61	-6.9	4.1	88.96	1.3
	2	85.56	2.3	-2.9	88.75	0.9
	3	87.73	2.5	-3.6	88.48	0.1
	4	91.13	3.9	3.7	88.75	0.3
	5	89.36	-1.9	3.5	89.00	1.0
	6	97.82	9.5	8.1	89.61	2.0
	7	100.94	3.2	5.5	90.05	2.8
	8	88.29	-12.5	0.5	90.08	2.5
	9	92.77	5.1	-0.2	90.07	2.2
	10	91.60	-1.3	6.9	90.56	2.9
	11	90.01	-1.7	2.1	90.72	2.8
	12	91.98	2.2	2.5	90.90	2.5
Annual average		90.90	–	–	90.90	2.5
2017:	1	89.57	-2.6	7.1	91.40	2.7
	2	94.94	6.0	11.0	92.18	3.9
	3	96.56	1.7	10.1	92.91	5.0
	4	91.83	-4.9	0.8	92.97	4.8
	5*	94.18	2.6	5.4	93.37	4.9

* Provisional data

Note: The indices are rounded up to two decimal figures when published and percentage changes up to one decimal figure when published.

Table 6. Monthly evolution of the seasonally adjusted Overall Industrial Production Index and Main Industrial Groupings

Base year: 2010=100.0

Year and month	Overall Index		Energy		Intermediate goods		Capital goods		Consumer durables		Consumer non-durables	
	Index	Monthly rate of change (%)	Index	Monthly rate of change (%)	Index	Monthly rate of change (%)	Index	Monthly rate of change (%)	Index	Monthly rate of change (%)	Index	Monthly rate of change (%)
2015:	1	88.00 1.0	95.74 3.3	79.23 -4.1	80.78 18.4	56.15 -7.5	89.00 -0.6	2	90.23 2.5	97.44 1.8	82.94 4.7	92.94 4.4
	3	90.86 0.7	97.40 -0.05	85.05 2.5	76.24 4.5	57.61 3.5	92.47 -0.5	4	88.71 -2.4	94.44 -3.0	84.94 -0.1	89.70 -3.0
	5	85.01 -4.2	83.10 -12.0	88.23 3.9	68.15 -6.7	55.99 -1.0	90.20 0.6	6	84.30 -0.8	84.25 1.4	85.87 -2.7	89.12 -1.2
	7	86.09 2.1	98.52 16.9	76.06 -11.4	64.64 0.3	48.16 -12.1	85.19 -4.4	8	90.24 4.8	97.35 -1.2	85.65 12.6	93.12 9.3
	9	89.36 -1.0	100.13 2.8	78.22 -8.7	68.37 17.6	53.58 -20.2	91.60 -1.6	10	87.48 -2.1	96.14 -4.0	80.34 2.7	88.44 -3.4
	11	90.98 4.0	100.59 4.6	84.46 5.1	67.21 -1.9	56.58 8.7	91.03 2.9	12	92.89 2.1	100.39 -0.2	85.83 1.6	95.13 4.5
Annual average		88.68	95.46	83.07	69.46	57.20	90.66					
2016:	1	91.46 -1.5	98.97 -1.4	84.36 -1.7	64.10 -10.0	54.46 -24.5	95.96 0.9	2	87.36 -4.5	89.03 -10.0	85.56 1.4	93.88 -2.2
	3	87.22 -0.2	87.69 -1.5	86.96 1.6	66.78 2.8	53.80 4.1	93.40 -0.5	4	91.74 5.2	94.71 8.0	89.07 2.4	96.98 3.8
	5	88.15 -3.9	93.04 -1.8	83.73 -6.0	69.63 -0.2	56.54 -4.2	91.53 -5.6	6	91.30 3.6	92.54 -0.5	93.62 11.8	93.36 2.0
	7	90.99 -0.3	96.10 3.8	85.29 -8.9	74.58 0.9	58.02 2.7	94.87 1.6	8	91.38 0.4	96.87 0.8	91.31 7.1	88.92 -6.3
	9	89.33 -2.2	97.99 1.2	84.67 -7.3	73.68 -4.5	54.52 -7.1	87.19 -1.9	10	93.55 4.7	103.27 5.4	86.91 2.6	92.71 6.3
	11	92.66 -1.0	101.60 -1.6	87.16 0.3	75.74 1.6	54.35 -3.2	91.41 -1.4	12	94.91 2.4	109.98 8.2	84.89 -2.6	90.72 -0.7
Annual average		90.84	96.81	86.96	71.34	56.01	92.58					
2017:	1	97.19 2.4	113.50 3.2	90.86 7.0	74.57 4.7	51.98 -11.1	88.08 -2.9	2	96.83 -0.4	105.96 -6.6	93.81 3.2	93.45 6.1
	3	95.76 -1.1	101.36 -4.3	94.73 1.0	74.80 -3.9	61.34 5.4	95.63 2.3	4	93.04 -2.8	100.62 -0.7	91.55 -3.4	91.42 -4.4
	5	93.01 -0.03	100.12 -0.5	90.53 -1.1	70.20 1.5	60.95 9.5	92.41 1.1					

Notes:

1. The indices are rounded up to two decimal figures when published and percentage changes up to one decimal figure when published.
2. The whole time-series with seasonally adjusted indices is recalculated every time a new observation is added in the time-series.

METHODOLOGICAL NOTES

Generally	The Industrial Production Index (IPI) is compiled since 1959.
Purpose of the index	The IPI is an important business cycle indicator, which shows the monthly activity in the Mining and Quarrying, Manufacturing, Electricity and Water Supply divisions. More specifically, the objective of the Industrial Production Index is to compare the magnitude (volume) of the output in the current month with the corresponding output in any given period which is considered as base period. The IPI shows the evolution of the value added of the production factors cost, at constant prices.
Legal basis	The compilation of the IPI is governed by Council Regulation (EC) No 1165/98 concerning short-term statistics. Furthermore, the IPI is governed by Regulation (EC) No 1893/2006 of the European Parliament and of the Council, by Commission Regulation (EC) No 656/2007 and by Council Regulation (EC) No 451/2008.
Reference period	Month.
Base year	2010=100.0.
Revision	The IPI is a fixed base index. Pursuant to the provisions of Council Regulation No 1165/98 concerning short-term statistics, the index is updated every five (5) years, in years ending in 0 or 5.
Statistical classifications	At the level of branches of economic activities, the classification NACE Rev.2 of Eurostat was used (Regulation No 1893/2006), while at the level of main industrial groups, the allocation of two-digit and three-digit NACE Rev. 2 headings to categories of aggregate classification was used, in accordance with Council Regulation No 656/2007. At product level, the classification CPA 2008 of Eurostat was used, according to Council Regulation No 451/2008.
Geographical coverage	The Index covers the whole Country.
Coverage of economic activities	The index covers all the sections of industry, the main industrial groups, all levels of economic activities (divisions, groups, and classes) and the level of products.
Statistical survey	The data are collected from a sample of 1,338 enterprises. The survey covers 354 products and the measurement of the surveyed products is made in terms of output quantities or in terms of production value or turnover, according to the specific situation in each branch of economic activity.
Seasonal adjustment	Seasonal adjustment is the procedure followed to remove the impact of seasonality on the time-series (i.e. the impact of monthly effects, e.g. holidays, tourist period etc), in order to improve comparability over time. The method used is the TRAMO-SEATS method with the use of JDemetra+ 2.0.0. For the seasonal adjustment of the Industrial Production Index at 2-digit level of NACE Rev.2, at section level (B – Mining and Quarrying, C – Manufacturing, D – Electricity and E – Water Supply) and for the Main Industrial Groupings (MIGs), the direct approach is applied, namely each time-series is seasonally adjusted independently. For the overall Industrial Production Index, the indirect approach is applied, with the seasonally adjusted IPI being computed by aggregating the seasonally adjusted MIGs using appropriate weights.
Publication of data	The IPI with the new base year (2010) is released since August 2014, with June 2014 as the first reference month. Data with base year 2010=100.0 are available from January 2000 onwards.
References	More information about the methodology concerning the compilation and calculation of the index and for the time series is available on the website of the Hellenic Statistical Authority (ELSTAT) (http://www.statistics.gr/en/statistics/-/publication/DKT21/-).