



PRESS RELEASE

QUARTERLY NON-FINANCIAL SECTOR ACCOUNTS: 4th Quarter 2016 (Provisional data)

The Hellenic Statistical Authority (ELSTAT) announces the provisional data for the quarterly non-financial sector accounts for the 4th quarter of 2016. Quarterly non-financial sector accounts provide an overall description of the Greek economy, based on the analysis of the economic behavior of the institutional sectors constituting the economy (households and non-profit institutions serving households, non-financial corporations, financial corporations, general government) and the relations of the national economy with the rest of world.

The data which are presented in the present Press Release have been compiled according to the new European System of National and Regional Accounts (ESA2010 – Regulation (EU) 549/2013).

The data cover the period 1999Q1-2016Q4.

During the fourth quarter of 2016, the external balance of goods and services recorded a deficit of 2.3 billion euro compared with a deficit of 3.1 billion euro recorded at the fourth quarter of 2015.

Despite the deficit decrease in the external balance of goods and services, on account of the decrease of the net incomes and (current and capital) transfers received from the rest of the world, the total economy (S.1) presented net lending of 0.3 billion euro to the rest of the world (S.2), compared with the fourth quarter of 2015 when net lending was 2.9 billion euro (Table 1, Graph 1).

Table 1

(in billion €)

	Total Economy (S.1)	2016 Q4	2015 Q4	Difference
(1)	Imports of goods and services	14.4	14.2	0.2
(2)	Exports of goods and services	12.2	11.1	1.0
(3)=(2)-(1)	External balance of goods and services	-2.3	-3.1	0.8
(4)	External balance of primary incomes, current and capital transfers	2.6	6.0	-3.4
(5)=(3)+(4)	Net Lending(+) /net borrowing(-)	0.3	2.9	-2.7
	Rest of the World (S.2)			
(6)=- (5)	Net Lending(+) /net borrowing(-)	-0.3	-2.9	2.7

Information

National Accounts Division

Quarterly, Regional & Satellite Accounts Section

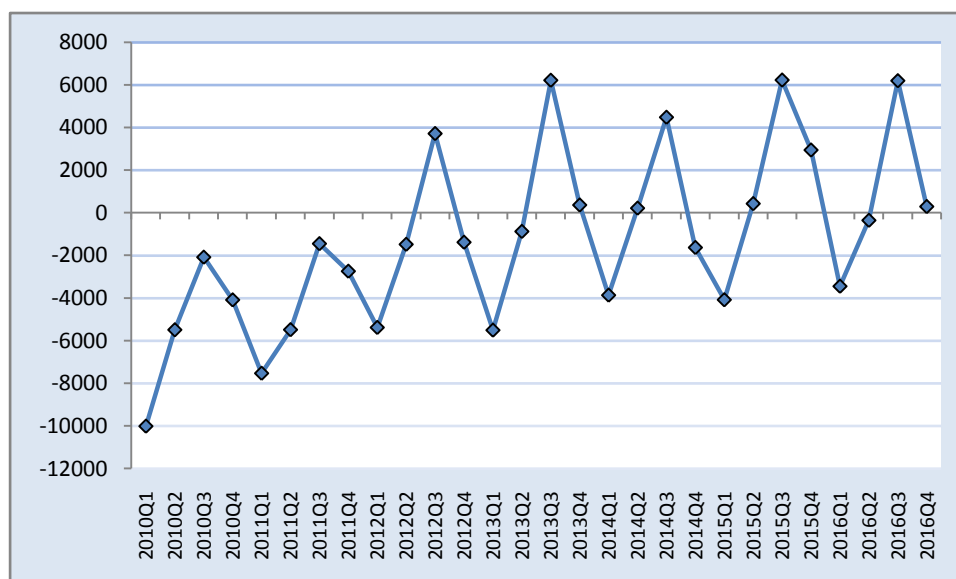
Andriana Dafni, Panagiotis Loutas

Tel: +30 213 135 2084, 213 135 2570

Fax: +30 213 135 2552

Email: a.dafni@statistics.gr, p.loutas@statistics.gr

Graph 1. Net lending (+) / net borrowing (-) Total Economy



During the fourth quarter of 2016, disposable income of the households and non-profit institutions serving households (NPISH) sector (S.1M) increased by 0.1% in comparison with the same quarter of the previous year, from 28.92 billion euro to 28.94 billion euro.

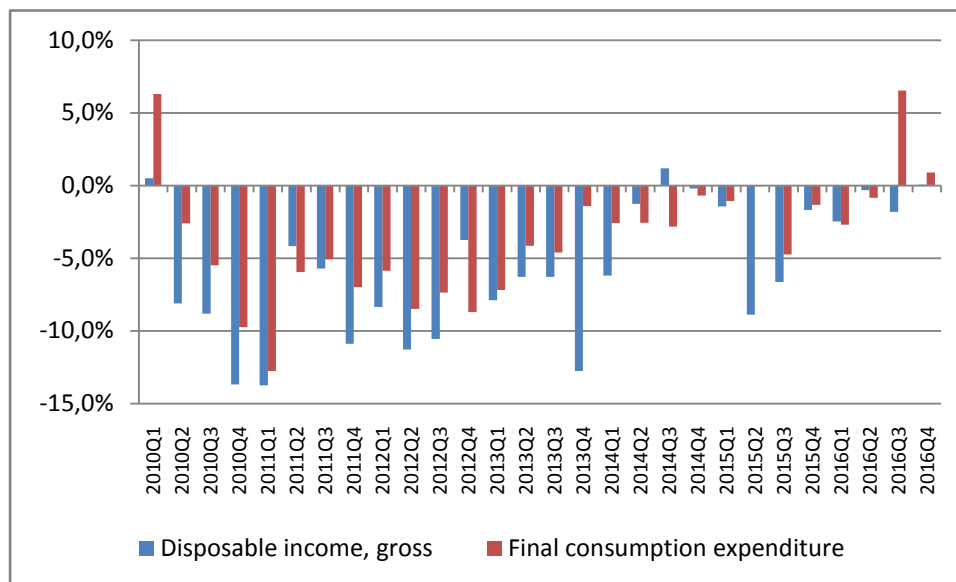
Table 2 presents the absolute values and the annual changes for the transactions of the secondary distribution of income account for households and non-profit institutions serving households (NPISH) sector for the fourth quarter of the years 2015 and 2016, which affect the gross disposable income.

Table 2
Secondary distribution of income account (in million €)

<i>Transactions and balancing items</i>		<i>Uses</i>		<i>y-o-y % 2016-2015</i>	<i>Resources</i>		<i>y-o-y % 2016-2015</i>
		2016Q4	2015Q4		2016Q4	2015Q4	
B.5g	Balance of primary incomes. gross				28389	28871	-1.7%
D.5	Current taxes on income, wealth, etc.	2553	2582	-1.1%			
D.6	Social contributions	6587	6945	-5.2%	9644	9437	2.2%
D.7	Other current transfers	515	379	35.7%	559	514	8.7%
B.6g	Disposable income, gross	28937	28916	0.1%			

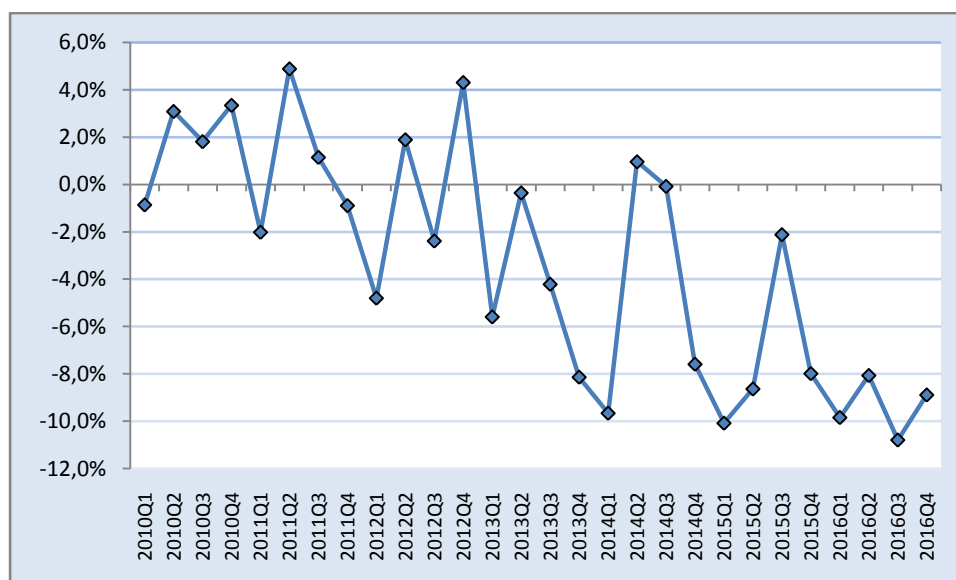
Final consumption expenditure of the households and non-profit institutions serving households (NPISH) sector increased by 0.9% in comparison with the same quarter of the previous year, from 31.2 billion euro to 31.5 billion euro (Graph 2).

Graph2. Households and NPISH gross disposable income and final consumption expenditure growth
(change compared with the same quarter of the previous year)



The saving rate of the households and NPISH sector, defined as gross savings divided by gross disposable income, was -8.9% in the fourth quarter of 2016 compared with -8.0% in the fourth quarter of 2015 (Graph 3).

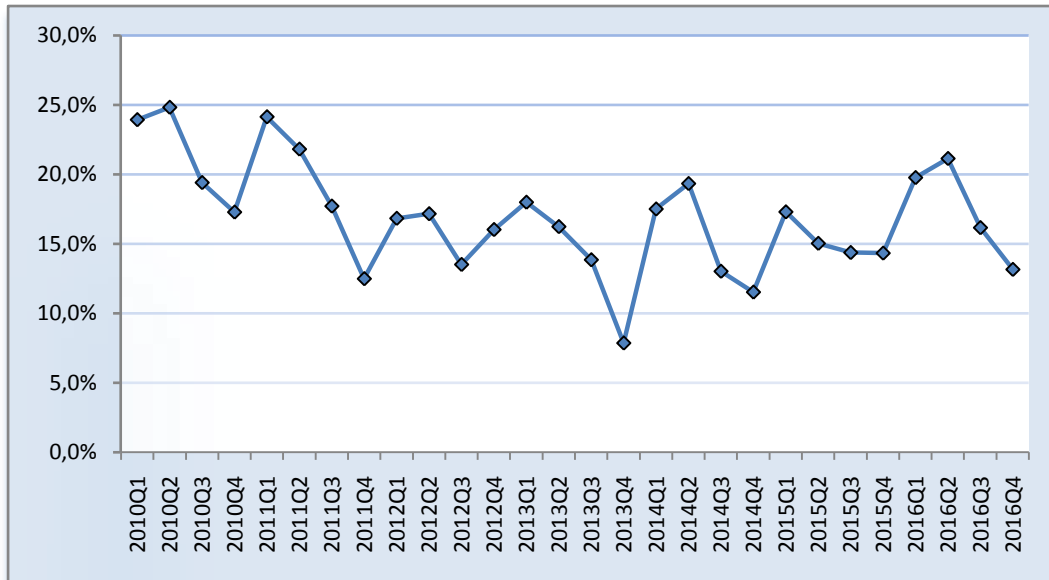
Graph 3. Saving rate of households and NPISH



During the fourth quarter of 2016, the gross fixed capital formation of the non-financial corporation's sector (S.11) decreased by 9.2% in comparison with the same quarter of the previous year, from 2.0 billion euro to 1.8 billion euro.

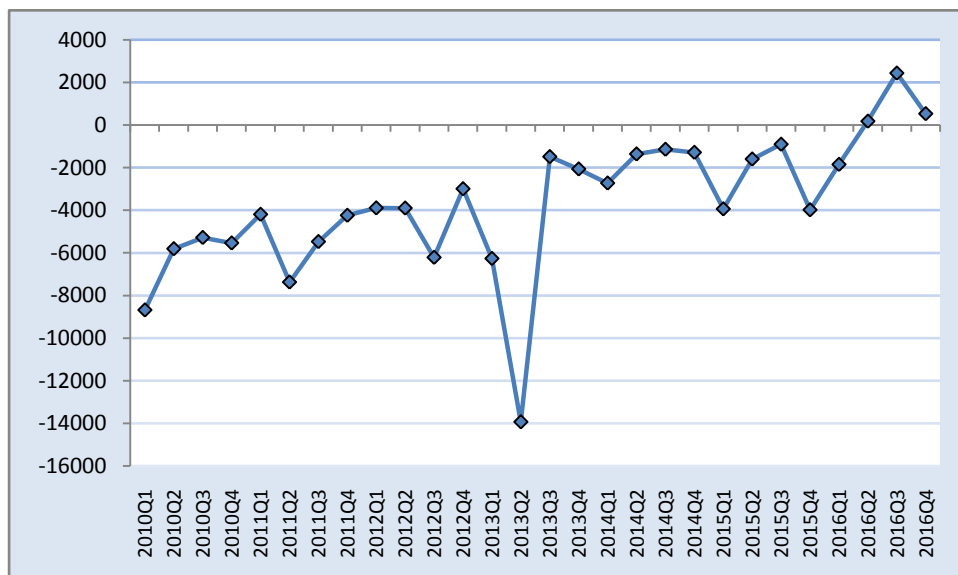
The gross investment rate of the sector, defined as gross fixed capital formation divided by gross value added, was 13.1% compared with 14.3% in the fourth quarter of 2015 (Graph 4).

Graph 4. Gross investment rate of Non-financial corporations



Net lending of general government (S.13) during the fourth quarter of 2016 amounted to 0.5 billion euro compared with 4.0 billion euro of net borrowing in the fourth quarter of 2015 (Graph 5).

Graph 5. Net lending (+)/ net borrowing (-) of General Government



EXPLANATORY NOTES

General: The Quarterly non-financial Sector Accounts (QSA) provide a description of the different stages of the economic process: production, generation of income, distribution of income, redistribution of income, use of income and non-financial accumulation. They also provide a list of balancing items that have high analytical value in their own right: value added, operating surplus and mixed income, balance of primary incomes, disposable income, saving, net lending / net borrowing.

Legal basis: The QSA are compiled in accordance with the European System of Accounts -[ESA 2010](#) of the Council Regulation (EU) No 549/2013 of the European Parliament and of the Council of 21 May 2013.

Reference period: The accounting period is the quarter.

Geographical coverage: The whole Greek territory.

Unit of measure: The economic data are published in million euro.

Revision: The Quarterly non-financial Sector Accounts are revised following the revisions of annual non-financial sector accounts, quarterly national accounts and quarterly non-financial accounts of General Government, in order to ensure coherence between them.

Statistical classification: The standard followed is the European System of Accounts (ESA 2010). The main categories are the institutional sectors and the transactions recorded between the sectors. The institutional sectors combine institutional units with similar characteristics and behaviour, and are classified as follows:

Total Economy (S.1)

Non-financial corporations (S.11)

Financial corporations (S.12)

General government (S.13)

Households and non-profit institutions serving households (NPISH) (S.1M)

Rest of the World (S.2)

Publication of data: The QSA data are published at about 120 days after the end of the reference quarter.

References: More information on the methodology and detailed tables are available on the ELSTAT website:

<http://www.statistics.gr/en/statistics/-/publication/SEL91/->