



## PRESS RELEASE

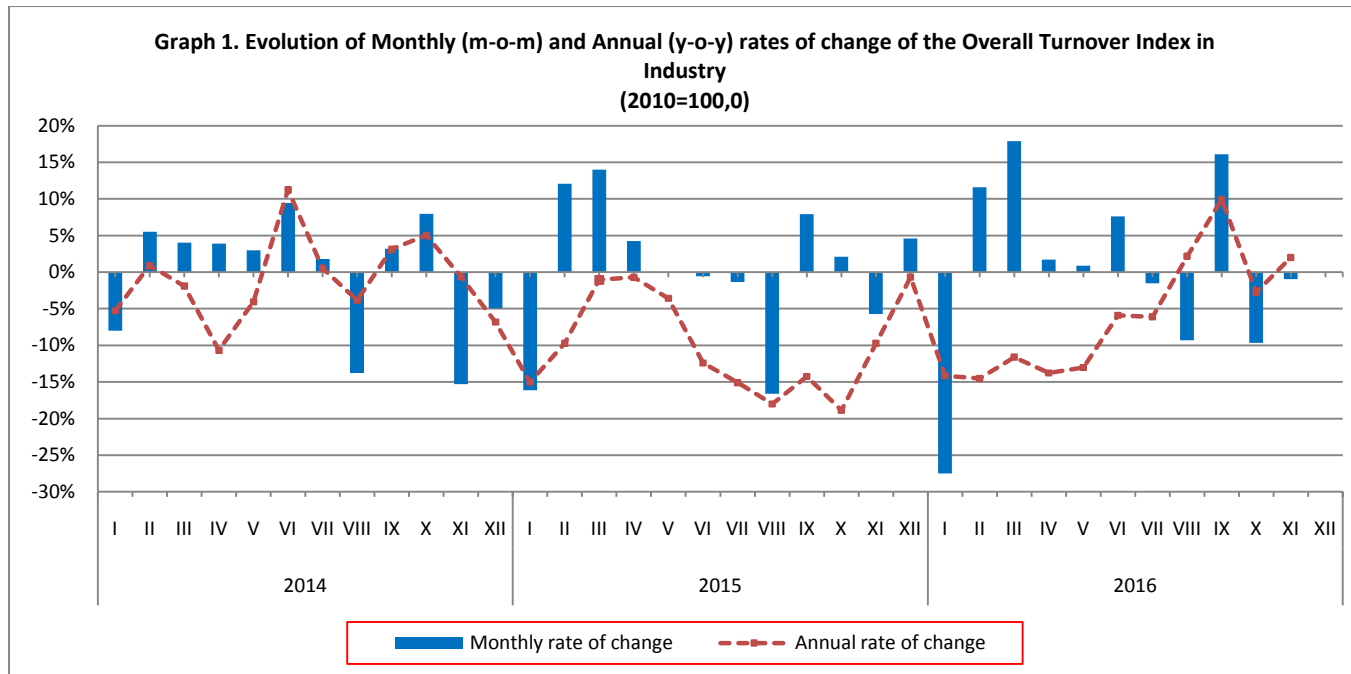
### TURNOVER INDEX IN INDUSTRY: November 2016, y-o-y increase by 2.0%

The evolution of the Turnover Index in Industry with base year 2010=100.0 for November 2016, according to provisional data, is as follows:

The Overall Turnover Index in Industry (both domestic and non-domestic market) in November 2016 compared with the corresponding index of November 2015 recorded an increase of 2.0%. In November 2015 the annual rate of change of the Overall Turnover Index in Industry was -9.7% (Table 1).

The Overall Turnover Index in Industry in November 2016 compared with October 2016 recorded a decrease of 1.0% (Table 6).

The average Overall Turnover Index in Industry for the 12-month period from December 2015 to November 2016, compared with the corresponding index of the 12-month period from December 2014 to November 2015, decreased by 5.9%. In November 2015, the corresponding annual rate of change of the Overall Turnover Index in Industry was -10.6% (Table 13).



#### Information:

Economic and Short-Term Indices Division

Production Indices Section

Diamantaki Aikaterini - Karathanos Panagiotis

Tel: 0030 213 1352122 – 2706 Fax: 0030 213 1352738

[a.diamantaki@statistics.gr](mailto:a.diamantaki@statistics.gr), [p.karathanos@statistics.gr](mailto:p.karathanos@statistics.gr)

## Comparison of the Overall Turnover Index in Industry in November 2016

### I. Annual comparison of the Overall Turnover Index in Industry (Table 1)

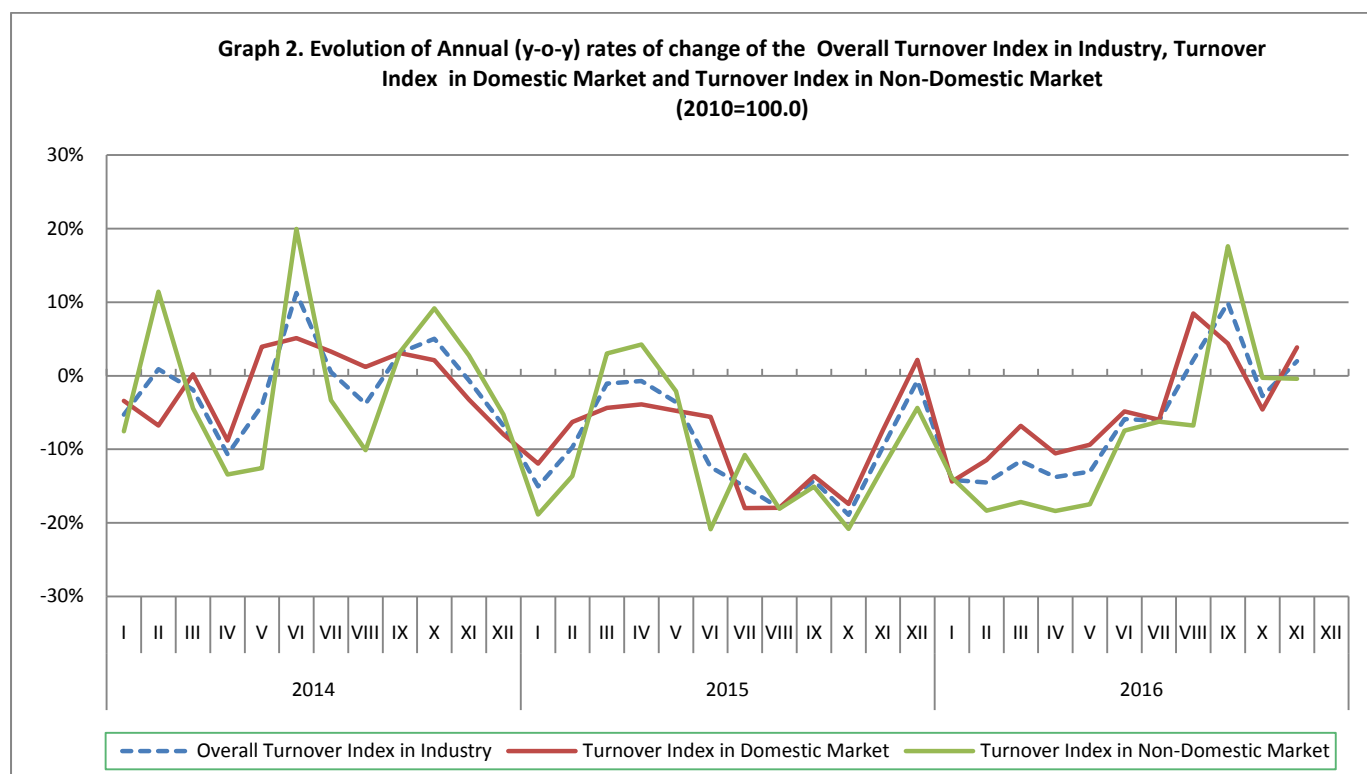
The increase of the Overall Turnover Index in Industry by 2.0% in November 2016, compared with the corresponding index in November 2015, was due to the annual changes as following:

#### 1. By Industrial Sections

- Mining and quarrying turnover increased by 5.4%.
- Manufacturing turnover increased by 1.9%.

#### 2. By kind of market

- The Turnover Index in Industry for the domestic market increased by 3.9%.
- The Turnover Index in Industry for the non-domestic market decreased by 0.4%.



### II. Annual comparison of the Turnover Index in Industry in Domestic Market (Table 2)

The increase of the Turnover Index in Industry for the domestic market by 3.9% in November 2016, compared with November 2015, is due to the following annual changes in the industrial sections (Tables 2):

- Manufacturing turnover increased by 4.1%.
- Mining and quarrying turnover decreased by 13.3%.

### III. Annual comparison of the Turnover Index in Industry in Non-Domestic Market (Tables 3, 4, 5)

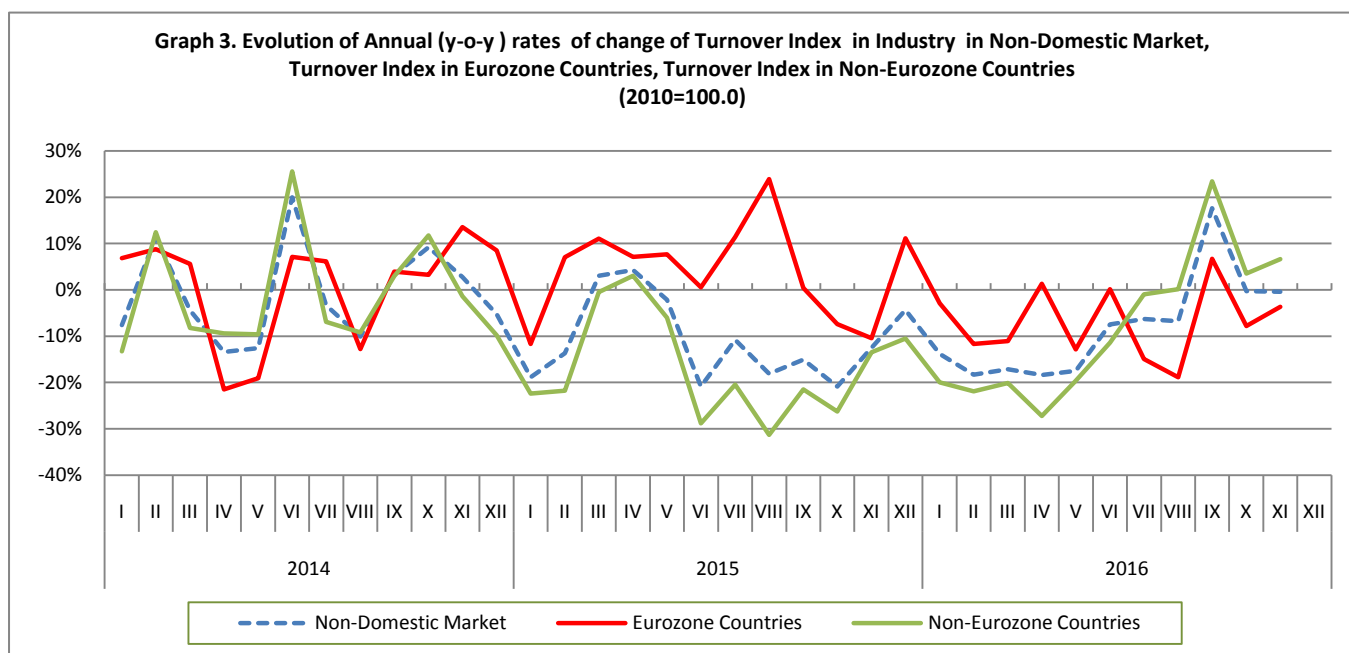
The decrease of the Turnover Index in Industry for the Non-Domestic market by 0.4% in November 2016, compared with November 2015, was due to the annual changes as following:

1. By Industrial Sections

- Manufacturing turnover decreased by 0.9%.
- Mining and quarrying turnover increased by 24.4%.

2. By kind of market

- The Turnover Index in Industry for the Eurozone countries increased by 6.6%.
- The Turnover Index in Industry for the non-Eurozone countries decreased by 3.6%.



#### IV. Monthly comparison of the Overall Turnover Index in Industry (Tables 6, 7, 8, 9, 10)

The decrease of the Overall Turnover Index in Industry by 1.0% in November 2016, compared with the corresponding index in October 2016, was due to the annual changes as following:

1. By Industrial Sections

- Mining and quarrying turnover decreased by 9.4%.
- Manufacturing turnover decreased by 0.8%.

2. By kind of market

- The Turnover Index in Industry for the domestic market decreased by 0.4%.
- The Turnover Index in Industry for the non-domestic market decreased by 1.7%.

**Table 1: Annual rates of change of the Turnover Index in Industry (Total Market)**

Base year: 2010=100.0

| Branch code               |   | Branch name | Weights | November |        |        | Rate of change (%) |           |
|---------------------------|---|-------------|---------|----------|--------|--------|--------------------|-----------|
|                           |   |             |         | 2016*    | 2015   | 2014   | 2016/2015          | 2015/2014 |
| OVERALL INDEX             |   |             |         | 87.46    | 85.75  | 95.00  | 2.0                | -9.7      |
| B                         | MINING AND QUARRYING  |             | 100.00  | 96.63    | 91.69  | 104.98 | 5.4                | -12.7     |
| 05                        | Mining of coal and lignite                                    |             | 5.89    | 92.35    | 142.04 | 227.34 | -35.0              | -37.5     |
| 06                        | Extraction of crude petroleum and natural gas                 |             | 6.90    | 0.00     | 0.00   | 0.00   | -                  | -         |
| 07                        | Mining of metal ores  |             | 16.67   | 132.75   | 102.17 | 137.98 | 29.9               | -26.0     |
| 08                        | Other mining and quarrying products                           |             | 70.54   | 97.89    | 93.97  | 97.26  | 4.2                | -3.4      |
| Г                         | MANUFACTURING   |             | 100.00  | 87.30    | 85.65  | 94.83  | 1.9                | -9.7      |
| 10                        | Food  |             | 18.21   | 92.73    | 89.00  | 92.50  | 4.2                | -3.8      |
| 11                        | Beverages   |             | 4.57    | 54.14    | 53.25  | 53.49  | 1.7                | -0.5      |
| 12                        | Tobacco products  |             | 1.10    | 121.63   | 119.87 | 113.29 | 1.5                | 5.8       |
| 13                        | Textiles  |             | 1.21    | 72.98    | 74.24  | 62.74  | -1.7               | 18.3      |
| 14                        | Wearing apparel   |             | 1.39    | 53.12    | 57.13  | 64.00  | -7.0               | -10.7     |
| 15                        | Leather and related products                                  |             | 0.28    | 44.48    | 43.30  | 40.30  | 2.7                | 7.4       |
| 16                        | Wood and cork   |             | 0.72    | 48.87    | 49.53  | 48.70  | -1.3               | 1.7       |
| 17                        | Paper and paper products                                      |             | 2.07    | 90.74    | 97.84  | 92.11  | -7.3               | 6.2       |
| 18                        | Printing and recording services                               |             | 1.21    | 52.70    | 57.40  | 58.77  | -8.2               | -2.3      |
| 19                        | Coke and refined petroleum products                           |             | 33.96   | 94.17    | 94.65  | 120.50 | -0.5               | -21.5     |
| 20                        | Chemicals and chemical products                               |             | 4.97    | 82.86    | 91.02  | 79.08  | -9.0               | 15.1      |
| 21                        | Basic pharmaceutical products and pharmaceutical preparations |             | 2.64    | 110.38   | 97.24  | 99.51  | 13.5               | -2.3      |
| 22                        | Rubber and plastic products                                   |             | 3.26    | 100.46   | 102.97 | 99.54  | -2.5               | 3.5       |
| 23                        | Other non-metallic mineral products                           |             | 4.59    | 61.22    | 58.98  | 61.59  | 3.8                | -4.2      |
| 24                        | Basic metals  |             | 9.70    | 90.23    | 77.92  | 92.46  | 15.8               | -15.7     |
| 25                        | Fabricated metal products                                     |             | 3.25    | 81.70    | 67.86  | 64.08  | 20.4               | 5.9       |
| 26                        | Computers, electronic and optical products                    |             | 0.35    | 120.29   | 164.92 | 96.06  | -27.1              | 71.7      |
| 27                        | Electrical equipment  |             | 2.43    | 79.51    | 80.37  | 69.41  | -1.1               | 15.8      |
| 28                        | Machinery and equipment n. e. c.                              |             | 0.88    | 88.26    | 94.52  | 96.40  | -6.6               | -2.0      |
| 29                        | Motor vehicles, trailers and semi-trailers                    |             | 0.28    | 110.31   | 74.44  | 97.34  | 48.2               | -23.5     |
| 30                        | Other transport equipment                                     |             | 0.43    | 105.41   | 119.75 | 19.38  | -12.0              | 517.8     |
| 31                        | Furniture   |             | 0.84    | 57.79    | 52.48  | 55.37  | 10.1               | -5.2      |
| 32                        | Other manufactured goods                                      |             | 0.25    | 92.77    | 81.63  | 80.17  | 13.6               | 1.8       |
| 33                        | Repair and installation services of machinery and equipment   |             | 1.41    | 62.44    | 71.82  | 76.61  | -13.1              | -6.3      |
| MAIN INDUSTRIAL GROUPINGS |   |             |         |          |        |        |                    |           |
| 1                         | Energy  |             | 33.61   | 93.85    | 94.46  | 120.40 | -0.7               | -21.5     |
| 2                         | Intermediate goods  |             | 31.86   | 84.71    | 83.08  | 84.66  | 2.0                | -1.9      |
| 3                         | Capital goods   |             | 4.57    | 84.25    | 75.73  | 71.71  | 11.3               | 5.6       |
| 4                         | Consumer Durables   |             | 1.53    | 60.60    | 72.06  | 60.89  | -15.9              | 18.3      |
| 5                         | Consumer Non-Durables   |             | 28.43   | 84.94    | 80.79  | 82.16  | 5.2                | -1.7      |

\* Provisional data

Note: The indices are rounded up to two decimal figures when published and percentage changes are rounded up to one decimal figure when published.

**Table 2: Annual rates of change of the Turnover Index in Industry for the Domestic Market**

Base year: 2010=100.0

| Branch code               |   | Branch name | Weights | November |        |        | Rate of change (%) |           |
|---------------------------|---|-------------|---------|----------|--------|--------|--------------------|-----------|
|                           |   |             |         | 2016*    | 2015   | 2014   | 2016/2015          | 2015/2014 |
| OVERALL INDEX             |   |             |         | 72.45    | 69.75  | 75.35  | 3.9                | -7.4      |
| B                         | MINING AND QUARRYING  |             | 100.00  | 67.89    | 78.27  | 80.77  | -13.3              | -3.1      |
| 05                        | Mining of coal and lignite                                    |             | 9.91    | 93.00    | 143.02 | 228.95 | -35.0              | -37.5     |
| 06                        | Extraction of crude petroleum and natural gas                 |             | 11.69   | 0.00     | 0.00   | 0.00   | -                  | -         |
| 07                        | Mining of metal ores  |             | 10.57   | 134.29   | 133.66 | 107.44 | 0.5                | 24.4      |
| 08                        | Other mining and quarrying products                           |             | 67,83   | 65,59    | 73,69  | 68,95  | -11,0              | 6,9       |
| Γ                         | MANUFACTURING   |             | 100.00  | 72.51    | 69.63  | 75.28  | 4.1                | -7.5      |
| 10                        | Food  |             | 22.06   | 85.09    | 82.19  | 86.66  | 3.5                | -5.2      |
| 11                        | Beverages   |             | 6.16    | 50.95    | 50.67  | 50.82  | 0.6                | -0.3      |
| 12                        | Tobacco products  |             | 0.97    | 83.55    | 83.59  | 74.29  | -0.1               | 12.5      |
| 13                        | Textiles  |             | 0.89    | 70.56    | 68.19  | 59.35  | 3.5                | 14.9      |
| 14                        | Wearing apparel   |             | 1.02    | 58.99    | 61.10  | 59.51  | -3.5               | 2.7       |
| 15                        | Leather and related products                                  |             | 0.34    | 43.63    | 44.33  | 44.14  | -1.6               | 0.4       |
| 16                        | Wood and cork   |             | 0.89    | 42.74    | 42.85  | 38.78  | -0.3               | 10.5      |
| 17                        | Paper and paper products                                      |             | 2.65    | 83.37    | 93.22  | 85.34  | -10.6              | 9.2       |
| 18                        | Printing and recording services                               |             | 1.72    | 48.28    | 53.05  | 56.21  | -9.0               | -5.6      |
| 19                        | Coke and refined petroleum products                           |             | 31.51   | 77.25    | 70.49  | 87.96  | 9.6                | -19.9     |
| 20                        | Chemicals and chemical products                               |             | 4.60    | 80.93    | 86.30  | 71.50  | -6.2               | 20.7      |
| 21                        | Basic pharmaceutical products and pharmaceutical preparations |             | 2.45    | 94.58    | 85.34  | 85.18  | 10.8               | 0.2       |
| 22                        | Rubber and plastic products                                   |             | 3.01    | 81.68    | 88.64  | 80.82  | -7.9               | 9.7       |
| 23                        | Other non-metallic mineral products                           |             | 5.66    | 47.65    | 46.15  | 51.62  | 3.3                | -10.6     |
| 24                        | Basic metals  |             | 5.72    | 65.97    | 53.16  | 61.78  | 24.1               | -14.0     |
| 25                        | Fabricated metal products                                     |             | 3.47    | 45.47    | 40.59  | 45.49  | 12.0               | -10.8     |
| 26                        | Computers, electronic and optical products                    |             | 0.17    | 18.70    | 147.28 | 41.33  | -87.3              | 256.3     |
| 27                        | Electrical equipment  |             | 1.82    | 50.96    | 52.02  | 46.44  | -2.0               | 12.0      |
| 28                        | Machinery and equipment n. e. c.                              |             | 0.77    | 46.18    | 49.26  | 45.81  | -6.3               | 7.5       |
| 29                        | Motor vehicles, trailers and semi-trailers                    |             | 0.27    | 134.66   | 84.59  | 119.13 | 59.2               | -29.0     |
| 30                        | Other transport equipment                                     |             | 0.40    | 111.45   | 115.12 | 3.53   | -3.2               | 3163.1    |
| 31                        | Furniture   |             | 1.15    | 48.55    | 47.47  | 50.44  | 2.3                | -5.9      |
| 32                        | Other manufactured goods                                      |             | 0.27    | 57.14    | 53.13  | 56.25  | 7.5                | -5.6      |
| 33                        | Repair and installation services of machinery and equipment   |             | 2.03    | 62.44    | 71.82  | 76.61  | -13.1              | -6.3      |
| MAIN INDUSTRIAL GROUPINGS |   |             |         |          |        |        |                    |           |
| 1                         | Energy  |             | 31.37   | 76.92    | 70.44  | 88.12  | 9.2                | -20.1     |
| 2                         | Intermediate goods  |             | 28.94   | 68.62    | 68.96  | 68.25  | -0.5               | 1.1       |
| 3                         | Capital goods   |             | 5.20    | 60.19    | 59.87  | 57.25  | 0.5                | 4.6       |
| 4                         | Consumer Durables   |             | 1.74    | 45.66    | 58.47  | 49.82  | -21.9              | 17.4      |
| 5                         | Consumer Non-Durables   |             | 32.75   | 74.92    | 71.96  | 73.65  | 4.1                | -2.3      |

\* Provisional data

Note: The indices are rounded up to two decimal figures when published and percentage changes are rounded up to one decimal figure when published.

**Table 3: Annual rates of change of the Turnover Index in Industry for the Non - Domestic Market**

Base year: 2010=100.0

| Branch code               |   | Branch name | Weights | November |        |        | Rate of change (%) |           |
|---------------------------|---|-------------|---------|----------|--------|--------|--------------------|-----------|
|                           |   |             |         | 2016*    | 2015   | 2014   | 2016/2015          | 2015/2014 |
| OVERALL INDEX             |   |             |         | 120.99   | 121.48 | 138.89 | -0.4               | -12.5     |
| B                         | MINING AND QUARRYING  |             | 100.00  | 138.09   | 111.06 | 139.91 | 24.4               | -20.6     |
| 05                        | Mining of coal and lignite                                    |             | 0.10    | 0.00     | 3.96   | 0.00   | -100.0             | 0.0       |
| 06                        | Extraction of crude petroleum and natural gas <sup>(2)</sup>  |             | 0.00    | -        | -      | -      | -                  | -         |
| 07                        | Mining of metal ores  |             | 25.44   | 131.83   | 83.34  | 156.24 | 58.2               | -46.7     |
| 08                        | Other mining and quarrying products                           |             | 74.46   | 140.42   | 120.68 | 134.52 | 16.4               | -10.3     |
| Γ                         | MANUFACTURING   |             | 100.00  | 120.61   | 121.72 | 138.86 | -0.9               | -12.4     |
| 10                        | Food  |             | 9.54    | 132.31   | 124.26 | 122.74 | 6.5                | 1.2       |
| 11                        | Beverages   |             | 0.98    | 99.47    | 90.03  | 91.49  | 10.5               | -1.6      |
| 12                        | Tobacco products  |             | 1.38    | 181.70   | 177.10 | 174.82 | 2.6                | 1.3       |
| 13                        | Textiles  |             | 1.93    | 75.48    | 80.50  | 66.24  | -6.2               | 21.5      |
| 14                        | Wearing apparel   |             | 2.21    | 47.01    | 53.00  | 68.68  | -11.3              | -22.8     |
| 15                        | Leather and related products                                  |             | 0.15    | 48.69    | 38.19  | 21.24  | 27.5               | 79.8      |
| 16                        | Wood and cork   |             | 0.37    | 81.42    | 85.06  | 101.38 | -4.3               | -16.1     |
| 17                        | Paper and paper products                                      |             | 0.77    | 148.12   | 133.80 | 144.89 | 10.7               | -7.7      |
| 18                        | Printing and recording services                               |             | 0.07    | 286.98   | 287.32 | 194.16 | -0.1               | 48.0      |
| 19                        | Coke and refined petroleum products                           |             | 39.47   | 124.60   | 138.10 | 179.05 | -9.8               | -22.9     |
| 20                        | Chemicals and chemical products                               |             | 5.82    | 86.29    | 99.42  | 92.59  | -13.2              | 7.4       |
| 21                        | Basic pharmaceutical products and pharmaceutical preparations |             | 3.07    | 138.71   | 118.58 | 125.19 | 17.0               | -5.3      |
| 22                        | Rubber and plastic products                                   |             | 3.82    | 133.86   | 128.47 | 132.82 | 4.2                | -3.3      |
| 23                        | Other non-metallic mineral products                           |             | 2.17    | 141.11   | 134.52 | 120.30 | 4.9                | 11.8      |
| 24                        | Basic metals  |             | 18.67   | 106.98   | 95.01  | 113.64 | 12.6               | -16.4     |
| 25                        | Fabricated metal products                                     |             | 2.74    | 185.30   | 145.85 | 117.26 | 27.1               | 24.4      |
| 26                        | Computers, electronic and optical products                    |             | 0.74    | 174.21   | 174.28 | 125.11 | 0.0                | 39.3      |
| 27                        | Electrical equipment  |             | 3.80    | 110.24   | 110.89 | 94.13  | -0.6               | 17.8      |
| 28                        | Machinery and equipment n. e. c.                              |             | 1.13    | 152.83   | 163.97 | 174.03 | -6.8               | -5.8      |
| 29                        | Motor vehicles, trailers and semi-trailers                    |             | 0.29    | 59.85    | 53.41  | 52.18  | 12.1               | 2.4       |
| 30                        | Other transport equipment                                     |             | 0.50    | 94.54    | 128.10 | 47.98  | -26.2              | 167.0     |
| 31                        | Furniture   |             | 0.17    | 202.71   | 131.21 | 132.79 | 54.5               | -1.2      |
| 32                        | Other manufactured goods                                      |             | 0.21    | 193.54   | 162.26 | 147.80 | 19.3               | 9.8       |
| 33                        | Repair and installation services of machinery and equipment   |             | 0.00    | 0.00     | 0.00   | 0.00   | 0.0                | 0.0       |
| MAIN INDUSTRIAL GROUPINGS |   |             |         |          |        |        |                    |           |
| 1                         | Energy  |             | 38.60   | 124.60   | 138.10 | 179.04 | -9.8               | -22.9     |
| 2                         | Intermediate goods  |             | 38.39   | 111.82   | 106.87 | 112.31 | 4.6                | -4.8      |
| 3                         | Capital goods   |             | 3.16    | 172.69   | 134.03 | 124.84 | 28.8               | 7.4       |
| 4                         | Consumer Durables   |             | 1.06    | 116.13   | 122.60 | 102.07 | -5.3               | 20.1      |
| 5                         | Consumer Non-Durables   |             | 18.79   | 123.86   | 115.06 | 115.20 | 7.7                | -0.1      |

\* Provisional data

Notes:

1. The indices are rounded up to two decimal figures when published and percentage changes are rounded up to one decimal figure when published.
2. The Index is not computed (base year value = 0)

**Table 4: Annual rates of change of the Turnover Index in Industry for the Eurozone Countries**

Base year: 2010=100.0

| Branch code               |                       | Branch name | November |        |        | Rate of change (%) |           |
|---------------------------|-----------------------|-------------|----------|--------|--------|--------------------|-----------|
|                           |                       |             | 2016*    | 2015   | 2014   | 2016/2015          | 2015/2014 |
| OVERALL INDEX             |                       |             | 123.03   | 115.38 | 128.86 | 6.6                | -10.5     |
| INDUSTRIAL SECTIONS       |                       |             |          |        |        |                    |           |
| B                         | MINING AND QUARRYING  |             | 159.89   | 138.58 | 130.08 | 15.4               | 6.5       |
| C                         | MANUFACTURING         |             | 122.02   | 114.74 | 128.83 | 6.3                | -10.9     |
| MAIN INDUSTRIAL GROUPINGS |                       |             |          |        |        |                    |           |
| 1                         | Energy                |             | 129.92   | 115.80 | 287.36 | 12.2               | -59.7     |
| 2                         | Intermediate goods    |             | 120.89   | 119.80 | 111.98 | 0.9                | 7.0       |
| 3                         | Capital goods         |             | 180.35   | 129.28 | 93.55  | 39.5               | 38.2      |
| 4                         | Consumer Durables     |             | 130.07   | 94.88  | 104.15 | 37.1               | -8.9      |
| 5                         | Consumer Non-Durables |             | 117.62   | 108.34 | 101.45 | 8.6                | 6.8       |

\* Provisional data

**Table 5: Annual rates of change of the Turnover Index in Industry for the Non - Eurozone Countries**

Base year: 2010=100.0

| Branch code               |                       | Branch name | November |        |        | Rate of change (%) |           |
|---------------------------|-----------------------|-------------|----------|--------|--------|--------------------|-----------|
|                           |                       |             | 2016*    | 2015   | 2014   | 2016/2015          | 2015/2014 |
| OVERALL INDEX             |                       |             | 119.97   | 124.51 | 143.86 | -3.6               | -13.5     |
| INDUSTRIAL SECTIONS       |                       |             |          |        |        |                    |           |
| B                         | MINING AND QUARRYING  |             | 123.12   | 92.15  | 146.66 | 33.6               | -37.2     |
| C                         | MANUFACTURING         |             | 119.91   | 125.15 | 143.80 | -4.2               | -13.0     |
| MAIN INDUSTRIAL GROUPINGS |                       |             |          |        |        |                    |           |
| 1                         | Energy                |             | 123.98   | 140.67 | 166.55 | -11.9              | -15.5     |
| 2                         | Intermediate goods    |             | 104.97   | 97.10  | 112.56 | 8.1                | -13.7     |
| 3                         | Capital goods         |             | 168.64   | 136.54 | 141.35 | 23.5               | -3.4      |
| 4                         | Consumer Durables     |             | 94.82    | 164.98 | 98.89  | -42.5              | 66.8      |
| 5                         | Consumer Non-Durables |             | 132.44   | 124.31 | 134.11 | 6.5                | -7.3      |

\* Provisional data

*Note: The indices are rounded up to two decimal figures when published and percentage changes are rounded up to one decimal figure when published.*

**Table 6: Monthly rates of change of the Turnover Index in Industry (Total Market)**

Base year: 2010=100.0

| Branch code                      | Branch name           | November<br>2016* | October<br>2016** | Rate of change (%)<br>Nov.16/Oct.16 |
|----------------------------------|-----------------------|-------------------|-------------------|-------------------------------------|
| <b>OVERALL INDEX</b>             |                       | <b>87.46</b>      | <b>88.31</b>      | <b>-1.0</b>                         |
| <b>INDUSTRIAL SECTIONS</b>       |                       |                   |                   |                                     |
| B                                | MINING AND QUARRYING  | 96.63             | 106.67            | -9.4                                |
| C                                | MANUFACTURING         | 87.30             | 88.00             | -0.8                                |
| <b>MAIN INDUSTRIAL GROUPINGS</b> |                       |                   |                   |                                     |
| 1                                | Energy                | 93.85             | 100.84            | -6.9                                |
| 2                                | Intermediate goods    | 84.71             | 82.96             | 2.1                                 |
| 3                                | Capital goods         | 84.25             | 82.33             | 2.3                                 |
| 4                                | Consumer Durables     | 60.60             | 63.24             | -4.2                                |
| 5                                | Consumer Non-Durables | 84.94             | 81.83             | 3.8                                 |

**Table 7: : Monthly rates of change of the Turnover Index in Industry for the Domestic Market**

Base year: 2010=100.0

| Branch code                      | Branch name           | November<br>2016* | October<br>2016** | Rate of change (%)<br>Nov.16/Oct.16 |
|----------------------------------|-----------------------|-------------------|-------------------|-------------------------------------|
| <b>OVERALL INDEX</b>             |                       | <b>72.45</b>      | <b>72.73</b>      | <b>-0.4</b>                         |
| <b>INDUSTRIAL SECTIONS</b>       |                       |                   |                   |                                     |
| B                                | MINING AND QUARRYING  | 67.89             | 69.64             | -2.5                                |
| C                                | MANUFACTURING         | 72.51             | 72.78             | -0.4                                |
| <b>MAIN INDUSTRIAL GROUPINGS</b> |                       |                   |                   |                                     |
| 1                                | Energy                | 76.92             | 81.41             | -5.5                                |
| 2                                | Intermediate goods    | 68.62             | 66.36             | 3.4                                 |
| 3                                | Capital goods         | 60.19             | 60.05             | 0.2                                 |
| 4                                | Consumer Durables     | 45.66             | 55.01             | -17.0                               |
| 5                                | Consumer Non-Durables | 74.92             | 73.01             | 2.6                                 |

**Table 8: : Monthly rates of change of the Turnover Index in Industry for the Non - Domestic Market**

Base year: 2010=100.0

| Branch code                      | Branch name           | November<br>2016* | October<br>2016** | Rate of change (%)<br>Nov.16/Oct.16 |
|----------------------------------|-----------------------|-------------------|-------------------|-------------------------------------|
| <b>OVERALL INDEX</b>             |                       | <b>120.99</b>     | <b>123.13</b>     | <b>-1.7</b>                         |
| <b>INDUSTRIAL SECTIONS</b>       |                       |                   |                   |                                     |
| B                                | MINING AND QUARRYING  | 138.09            | 160.12            | -13.8                               |
| C                                | MANUFACTURING         | 120.61            | 122.30            | -1.4                                |
| <b>MAIN INDUSTRIAL GROUPINGS</b> |                       |                   |                   |                                     |
| 1                                | Energy                | 124.60            | 136.13            | -8.5                                |
| 2                                | Intermediate goods    | 111.82            | 110.93            | 0.8                                 |
| 3                                | Capital goods         | 172.69            | 164.20            | 5.2                                 |
| 4                                | Consumer Durables     | 116.13            | 93.84             | 23.8                                |
| 5                                | Consumer Non-Durables | 123.86            | 116.09            | 6.7                                 |

\* Provisional data    \*\* Revised data

*Note: The indices are rounded up to two decimal figures when published and percentage changes are rounded up to one decimal figure when published.*



**Table 9: : Monthly rates of change of the Turnover Index in Industry for the Eurozone Countries**

Base year: 2010=100.0

| Branch code                      | Branch name           | November<br>2016* | October<br>2016** | Rate of change (%)<br>Nov.16/Oct.16 |
|----------------------------------|-----------------------|-------------------|-------------------|-------------------------------------|
| <b>OVERALL INDEX</b>             |                       | <b>123.03</b>     | <b>114.48</b>     | <b>7.5</b>                          |
| <b>INDUSTRIAL SECTIONS</b>       |                       |                   |                   |                                     |
| B                                | MINING AND QUARRYING  | 159.89            | 81.43             | 96.4                                |
| C                                | MANUFACTURING         | 122.02            | 115.40            | 5.7                                 |
| <b>MAIN INDUSTRIAL GROUPINGS</b> |                       |                   |                   |                                     |
| 1                                | Energy                | 129.92            | 129.05            | 0.7                                 |
| 2                                | Intermediate goods    | 120.89            | 111.19            | 8.7                                 |
| 3                                | Capital goods         | 180.35            | 176.98            | 1.9                                 |
| 4                                | Consumer Durables     | 130.07            | 101.68            | 27.9                                |
| 5                                | Consumer Non-Durables | 117.62            | 108.64            | 8.3                                 |

\* Provisional data      \*\* Revised data

**Table 10: : Monthly rates of change of the Turnover Index in Industry for the Non - Eurozone Countries**

Base year: 2010=100.0

| Branch code                      | Branch name           | November<br>2016* | October<br>2016** | Rate of change (%)<br>Nov.16/Oct.16 |
|----------------------------------|-----------------------|-------------------|-------------------|-------------------------------------|
| <b>OVERALL INDEX</b>             |                       | <b>119.97</b>     | <b>127.41</b>     | <b>-5.8</b>                         |
| <b>INDUSTRIAL SECTIONS</b>       |                       |                   |                   |                                     |
| B                                | MINING AND QUARRYING  | 123.12            | 214.18            | -42.5                               |
| C                                | MANUFACTURING         | 119.91            | 125.69            | -4.6                                |
| <b>MAIN INDUSTRIAL GROUPINGS</b> |                       |                   |                   |                                     |
| 1                                | Energy                | 123.98            | 136.94            | -9.5                                |
| 2                                | Intermediate goods    | 104.97            | 110.74            | -5.2                                |
| 3                                | Capital goods         | 168.64            | 157.45            | 7.1                                 |
| 4                                | Consumer Durables     | 94.82             | 81.85             | 15.9                                |
| 5                                | Consumer Non-Durables | 132.44            | 126.33            | 4.8                                 |

\* Provisional data      \*\* Revised data

*Note: The indices are rounded up to two decimal figures when published and percentage changes are rounded up to one decimal figure when published.*

**Table 11: Evolution of the Turnover Index in Industry (Total Market) - y-o-y changes**
**Base year: 2010=100.0**

| Year-month |      | Overall Index (Total Market) |                           | Turnover Index in Industry for the Domestic Market |                           | Turnover Index in Industry for the Non - Domestic Market |                           |
|------------|------|------------------------------|---------------------------|--|---------------------------|--|---------------------------|
|            |      | Index                        | Annual rate of change (%) | Index  | Annual rate of change (%) | Index  | Annual rate of change (%) |
| 2015       | XI   | 85.75                        | -9.7                      | 69.75  | -7.4                      | 121.48   | -12.5                     |
|            | XII  | 89.68                        | -0.7                      | 75.61  | 2.2                       | 121.12   | -4.4                      |
| 2016       | I    | 65.02                        | -14.2                     | 54.24  | -14.4                     | 89.10  | -13.9                     |
|            | II   | 72.56                        | -14.5                     | 60.22  | -11.5                     | 100.11   | -18.3                     |
|            | III  | 85.54                        | -11.6                     | 69.95  | -6.8                      | 120.37   | -17.2                     |
|            | IV   | 87.00                        | -13.8                     | 76.98  | -10.6                     | 109.38   | -18.4                     |
|            | V    | 87.75                        | -13.0                     | 72.89  | -9.4                      | 120.95   | -17.5                     |
|            | VI   | 94.42                        | -5.9                      | 82.56  | -4.8                      | 120.90   | -7.5                      |
|            | VII  | 92.91                        | -6.2                      | 77.84  | -6.1                      | 126.57   | -6.3                      |
|            | VIII | 84.32                        | 2.2                       | 75.79  | 8.5                       | 103.38   | -6.8                      |
|            | XI   | 97.90                        | 9.9                       | 78.43  | 4.4                       | 141.40   | 17.5                      |
|            | X    | 88.31                        | -2.9                      | 72.73  | -4.8                      | 123.13   | -0.3                      |
|            | XI*  | 87.46                        | 2.0                       | 72.45  | 3.9                       | 120.99   | -0.4                      |

\*Provisional data

**Table 12: Evolution of the Turnover Index in Industry for the Non – Domestic Market - y-o-y changes**
**Base year: 2010=100.0**

| Year-month |      | Overall Index (Non - Domestic Market) |                           | Turnover Index in Industry for Eurozone Countries |                           | Turnover Index in Industry for Non - Eurozone Countries |                           |
|------------|------|---------------------------------------|---------------------------|---|---------------------------|---|---------------------------|
|            |      | Index                                 | Annual rate of change (%) | Index   | Annual rate of change (%) | Index   | Annual rate of change (%) |
| 2015       | XI   | 121.48                                | -12.5                     | 115.38  | -10.5                     | 124.51  | -13.5                     |
|            | XII  | 121.12                                | -4.4                      | 120.69  | 11.1                      | 121.33  | -10.5                     |
| 2016       | I    | 89.10                                 | -13.9                     | 108.24  | -2.9                      | 79.61   | -19.9                     |
|            | II   | 100.11                                | -18.3                     | 114.20  | -11.7                     | 93.13   | -21.9                     |
|            | III  | 120.37                                | -17.2                     | 127.58  | -11.1                     | 116.80  | -20.1                     |
|            | IV   | 109.38                                | -18.4                     | 127.24  | 1.3                       | 100.52  | -27.3                     |
|            | V    | 120.95                                | -17.5                     | 120.70  | -12.8                     | 121.08  | -19.6                     |
|            | VI   | 120.90                                | -7.5                      | 135.30  | 0.1                       | 113.76  | -11.4                     |
|            | VII  | 126.57                                | -6.3                      | 131.40  | -14.9                     | 124.18  | -1.0                      |
|            | VIII | 103.38                                | -6.8                      | 98.54   | -18.8                     | 105.78  | 0.1                       |
|            | XI   | 141.40                                | 17.5                      | 134.49  | 6.8                       | 144.83  | 23.2                      |
|            | X    | 123.13                                | -0.3                      | 114.48  | -8.9                      | 127.41  | 4.0                       |
|            | XI*  | 120.99                                | -0.4                      | 123.03  | 6.6                       | 119.97  | -3.6                      |

\*Provisional data

Note: The indices are rounded up to two decimal figures when published and percentage changes are rounded up to one decimal figure when published.

**Table 13: Average indices and rates of change (%) of the 12-month periods of Turnover Index in Industry (Total Market)**  
**Base year: 2010=100.0**

| Branch code               | Branch name   | Average Indices of 12-month periods |                         |                         | Rate of change<br>(%)<br>2016/2015 | Rate of change<br>(%)<br>2015/2014 |
|---------------------------|---|-------------------------------------|-------------------------|-------------------------|------------------------------------|------------------------------------|
|                           |   | Dec. 2015-<br>Nov. 2016*            | Dec. 2014-<br>Nov. 2015 | Dec. 2013-<br>Nov. 2014 |                                    |                                    |
| OVERALL INDEX             |   | 86.07                               | 91.43                   | 102.25                  | -5.9                               | -10.6                              |
| B                         | MINING AND QUARRYING  | 89.14                               | 88.31                   | 91.30                   | 0.9                                | -3.3                               |
| 05                        | Mining of coal and lignite                                    | 62.92                               | 167.42                  | 188.79                  | -62.4                              | -11.3                              |
| 06                        | Extraction of crude petroleum and natural gas                 | —                                   | —                       | —                       | —                                  | —                                  |
| 07                        | Mining of metal ores  | 123.60                              | 108.60                  | 121.44                  | 13.8                               | -10.6                              |
| 08                        | Other mining and quarrying products                           | 91.89                               | 85.55                   | 84.99                   | 7.4                                | 0.7                                |
| C                         | MANUFACTURING   | 86.02                               | 91.48                   | 102.43                  | -6.0                               | -10.7                              |
| 10                        | Food  | 93.10                               | 95.48                   | 94.06                   | -2.5                               | 1.5                                |
| 11                        | Beverages   | 82.63                               | 80.41                   | 79.22                   | 2.8                                | 1.5                                |
| 12                        | Tobacco products  | 125.01                              | 123.03                  | 96.97                   | 1.6                                | 26.9                               |
| 13                        | Textiles  | 67.63                               | 66.10                   | 64.35                   | 2.3                                | 2.7                                |
| 14                        | Wearing apparel   | 50.41                               | 52.28                   | 65.71                   | -3.6                               | -20.4                              |
| 15                        | Leather and related products                                  | 41.06                               | 35.68                   | 39.69                   | 15.1                               | -10.1                              |
| 16                        | Wood and cork   | 44.04                               | 42.28                   | 42.28                   | 4.2                                | 0.0                                |
| 17                        | Paper and paper products                                      | 92.12                               | 92.95                   | 90.69                   | -0.9                               | 2.5                                |
| 18                        | Printing and recording services                               | 53.67                               | 54.82                   | 57.84                   | -2.1                               | -5.2                               |
| 19                        | Coke and refined petroleum products                           | 86.97                               | 102.76                  | 138.58                  | -15.4                              | -25.9                              |
| 20                        | Chemicals and chemical products                               | 95.49                               | 94.95                   | 93.98                   | 0.6                                | 1.0                                |
| 21                        | Basic pharmaceutical products and pharmaceutical preparations | 104.05                              | 97.85                   | 94.31                   | 6.3                                | 3.8                                |
| 22                        | Rubber and plastic products                                   | 100.83                              | 105.10                  | 99.29                   | -4.1                               | 5.9                                |
| 23                        | Other non-metallic mineral products                           | 58.72                               | 54.94                   | 57.50                   | 6.9                                | -4.5                               |
| 24                        | Basic metals  | 88.21                               | 92.00                   | 88.31                   | -4.1                               | 4.2                                |
| 25                        | Fabricated metal products                                     | 80.78                               | 75.03                   | 80.36                   | 7.7                                | -6.6                               |
| 26                        | Computers, electronic and optical products                    | 135.47                              | 125.23                  | 99.26                   | 8.2                                | 26.2                               |
| 27                        | Electrical equipment  | 79.27                               | 74.86                   | 69.33                   | 5.9                                | 8.0                                |
| 28                        | Machinery and equipment n. e. c.                              | 82.91                               | 86.14                   | 84.36                   | -3.8                               | 2.1                                |
| 29                        | Motor vehicles, trailers and semi-trailers                    | 69.71                               | 67.74                   | 64.01                   | 2.9                                | 5.8                                |
| 30                        | Other transport equipment                                     | 107.69                              | 91.37                   | 33.39                   | 17.9                               | 173.6                              |
| 31                        | Furniture   | 52.87                               | 47.98                   | 48.07                   | 10.2                               | -0.2                               |
| 32                        | Other manufactured goods                                      | 90.13                               | 83.79                   | 80.35                   | 7.6                                | 4.3                                |
| 33                        | Repair and installation services of machinery and equipment   | 53.99                               | 59.18                   | 68.64                   | -8.8                               | -13.8                              |
| MAIN INDUSTRIAL GROUPINGS |   |                                     |                         |                         |                                    |                                    |
| 1                         | Energy  | 86.61                               | 102.60                  | 138.26                  | -15.6                              | -25.8                              |
| 2                         | Intermediate goods  | 85.44                               | 86.15                   | 84.19                   | -0.8                               | 2.3                                |
| 3                         | Capital goods   | 72.69                               | 69.95                   | 70.39                   | 3.9                                | -0.6                               |
| 4                         | Consumer Durables   | 61.51                               | 57.66                   | 57.70                   | 6.7                                | -0.1                               |
| 5                         | Consumer Non-Durables   | 89.61                               | 89.42                   | 87.47                   | 0.2                                | 2.2                                |

\*Provisional data

*Note: The indices are rounded up to two decimal figures when published and percentage changes are rounded up to one decimal figure when published.*

## METHODOLOGICAL NOTES

|  |   |
|--|---|
| <b>Generally</b>                       | The Turnover Index is being compiled since January 2006.  |
| <b>Purpose of the index</b>            | The purpose of this index is to measure the monthly activity of the industrial sector in terms of value. Turnover comprises the totals invoiced (without VAT) by the observation units during the reference period and corresponds to the market sales of goods or services supplied to third parties. The purposes and the characteristics of the Turnover Index apply, as well, to the indices for the distinction between domestic and non-domestic turnover.  |
| <b>Legal basis</b>                     | The compilation and publication of the Turnover Index is based on the framework of requirements of the Council Regulation (EC) No 1165/98 concerning short-term statistics (STS-R), as well as the amendment Regulation (EC) No 1158/05 of the European Parliament and Council, amending the Council Regulation (EC) No 1165/98. Furthermore, this index is governed by the Regulation (EEC) No.1893/2006 of the European Parliament and of the Council, by the Commission Regulation (EEC) No.656/2007 and by the Regulation (EEC) No.451/2008 of the Council. |
| <b>Reference period</b>                | Month   |
| <b>Base year</b>                       | 2010=100.0.   |
| <b>Revision</b>                        | The last revision of the Turnover Index in Industry with base year 2010=100.0 has been done in the framework of the Short – Term Statistics (STS) Council Regulation (EC) No 1165/98 concerning short-term statistics. According to this regulation the index in question is revised every five years, in years ending in 0 or 5.   |
| <b>Statistical classifications</b>     | At the level of categories of economic activities, the classification of NACE Rev. 2 was used (Regulation 1893/2006), while at the level of main industrial groups, the allocation of two-digit and three-digit NACE Rev. 2 headings to categories of aggregate classification was used, in accordance with the Commission Regulation 656/2007. At product level, the Eurostat classification CPA 2008 was used, according to the Council Regulation 451/2008.  |
| <b>Geographical coverage</b>           | The Index covers the whole country.   |
| <b>Coverage of economic activities</b> | The Turnover Index in Industry covers the whole country and is compiled for all activities listed in Sections C (mining and quarrying) and D (manufacturing) of the NACE Rev.2 classification.  |
| <b>Computation of the Index</b>        | The Turnover Index in Industry is a fixed base index. This index is calculated initially at the four-digit level of economic activity and subsequently, with the implementation of appropriate weighting coefficients, the index is calculated at higher levels (three-level, two-level and one-level of economic activity) or at the level of Main Industrial Groupings (MIGs).  |
| <b>Publication of data</b>             | The Turnover Index with base year 2010=100.0 is being released since November 2014 with September 2014 as first reference month. Data with base year 2010=100.0 are available from January 2000 onwards.  |
| <b>References</b>                      | More information about the methodology concerning the compilation and calculation of the index and for the time series is available on the Hellenic Statistical Authority (ELSTAT) website ( <a href="http://www.statistics.gr">www.statistics.gr</a> ).  |