

PRESS RELEASE

Survey on Social Care Units, 2015

The Hellenic Statistical Authority (ELSTAT) announces the data of the Survey on Social Care Units (legal entities of public law), conducted in 2015. The survey is carried out every two years and aims at collecting non-financial data on the units, such as the number of persons hosted by the units or receiving their services, as well as data on their personnel.

On the basis of available survey data, the number of Social Care Units in 2015 amounted to 44, compared with 42 in 2013. During the previous years, namely from 2007 to 2011 the number of these units remained stable, amounting to 95. However, from 2013 onwards, a change in the number of social care units is observed (Table 1, Graph 1) which is due to the fact that, pursuant to the Law 4025/2011 (Article 1) on the “Reconstruction of the National Social Welfare System”, as amended by the Law 4109/2013 (Article 9), the units that used to be Legal Entities of Public Law have merged and are now operating as branches of the new Regional Social Welfare Centres, which amount to 12 (one centre per NUTS 2 Region, except for the Region of Peloponnisos).

Each Regional Social Welfare Centre encompasses the corresponding units or branches for People with Disabilities or for Chronic Diseases, units for the Protection of Children and units or branches for the Recovery and Rehabilitation of People with Disabilities.

In 2015, the total number of beneficiaries of out-patient and in-patient care services amounted to 9.472 (Tables 3 and 4, Graph 4 and 5).

The total number of persons employed in the Social Care Units, in 2015, amounted to 2.446 (Table 2, Graph 3).

Graph 1. Social Care Units: Total number of units, persons employed and beneficiaries, 2007-2015

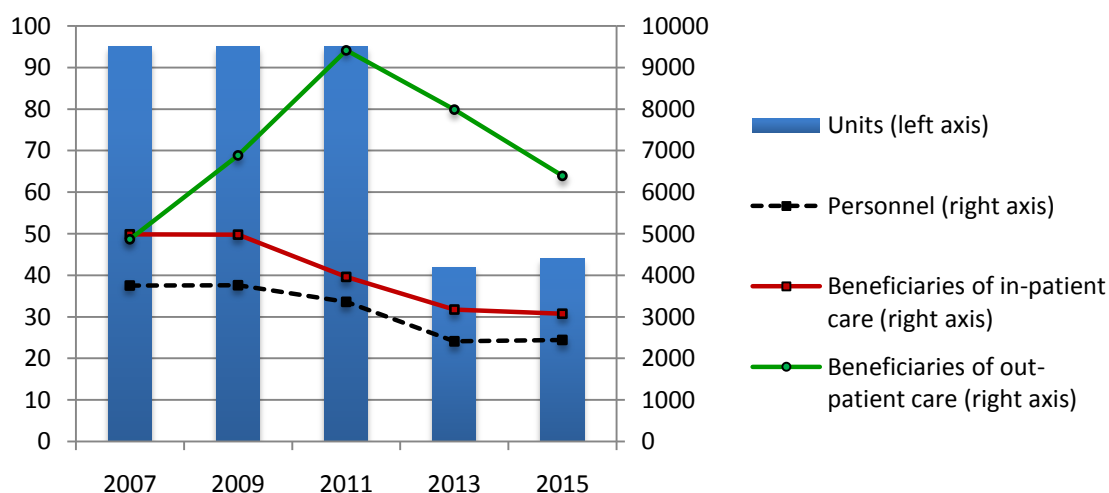
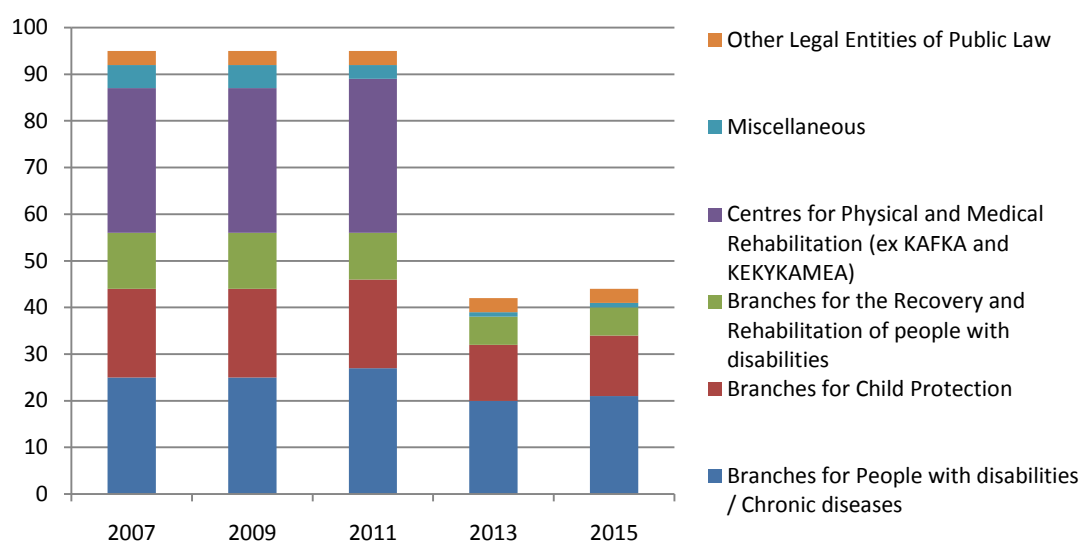


Table 1. Number of Social Care Units by category, 2007-2015

CATEGORY	NUMBER OF UNITS				
	2007	2009	2011	2013	2015
Branches for People with disabilities / Chronic diseases	25	25	27	20	21
Branches for Child Protection	19	19	19	12	13
Branches for the Recovery and Rehabilitation of people with disabilities	12	12	10	6	6
Centres for Physical and Medical Rehabilitation (ex KAFKA and KEKYKAMEA)	31	31	33	0 ¹	0 ¹
Miscellaneous	5	5	3	1	1
Other Legal Entities of Public Law ²	3	3	3	3	3
Total	95	95	95	42	44

Graph 2. Number of Social Care Units by category, 2007-2015



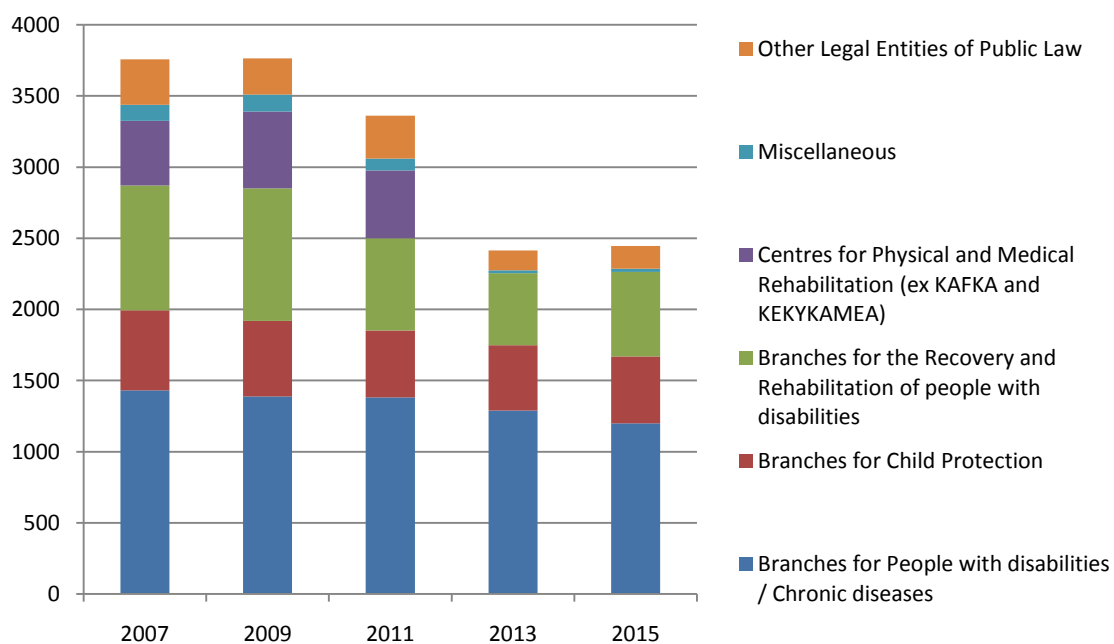
¹ The rehabilitation services provided by the Centres for Recovery and Physical and Social Rehabilitation (KAFKA) and KEKYKAMEA were transferred to the National Health System and the public hospitals and are now provided through the Centres for Physical and Medical Rehabilitation.

² Other Legal Entities of Public Law: they include the National Centre for Social Solidarity (EKKA), the National Foundation for the Deaf (EIK) and the Centre for Education and Rehabilitation for the Blind (KEAT).

Table 2. Persons employed in Social Care Units, by category of units, 2007-2015

CATEGORY	PERSONS EMPLOYED				
	2007	2009	2011	2013	2015
Branches for People with disabilities / Chronic diseases	1.430	1.389	1.381	1.290	1.198
Branches for Child Protection	563	529	471	457	471
Branches for the Recovery and Rehabilitation of people with disabilities	878	933	647	507	595
Centres for Physical and Medical Rehabilitation (KEFIAP)	454	540	478	0	0
Miscellaneous	113	119	83	20	21
Other Legal Entities of Public Law	319	253	301	139	161
Total	3.757	3.763	3.361	2.413	2.446

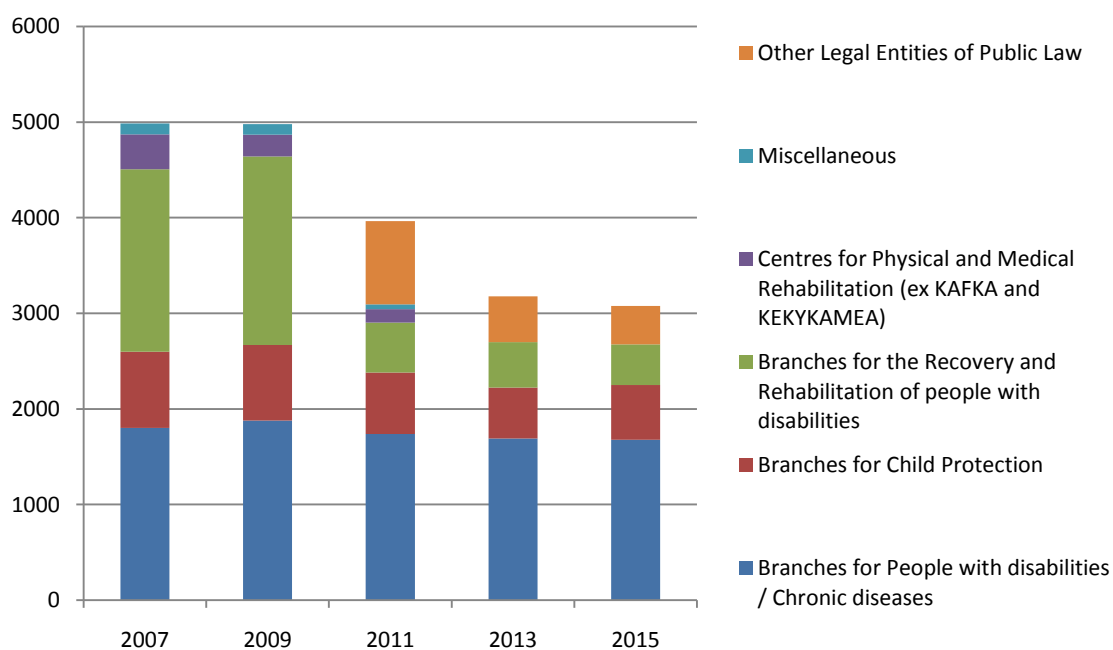
Graph 3. Persons employed in Social Care Units, by category of units, 2007-2015



**Table 3. Beneficiaries of IN-PATIENT care services in Social Care Units,
by category of units, 2007-2015**

CATEGORY	BENEFICIARIES OF IN-PATIENT CARE SERVICES				
	2007	2009	2011	2013	2015
Branches for People with disabilities / Chronic diseases	1.803	1.878	1.738	1.690	1.678
Branches for Child Protection	794	789	642	532	571
Branches for the Recovery and Rehabilitation of people with disabilities	1.911	1.974	524	476	426
Centres for Physical and Medical Rehabilitation (KEFIAP)	364	228	140	0	0
Miscellaneous	113	111	50	0	0
Other Legal Entities of Public Law	0	0	869	480	403
Total	4.985	4.980	3.963	3.178	3.078

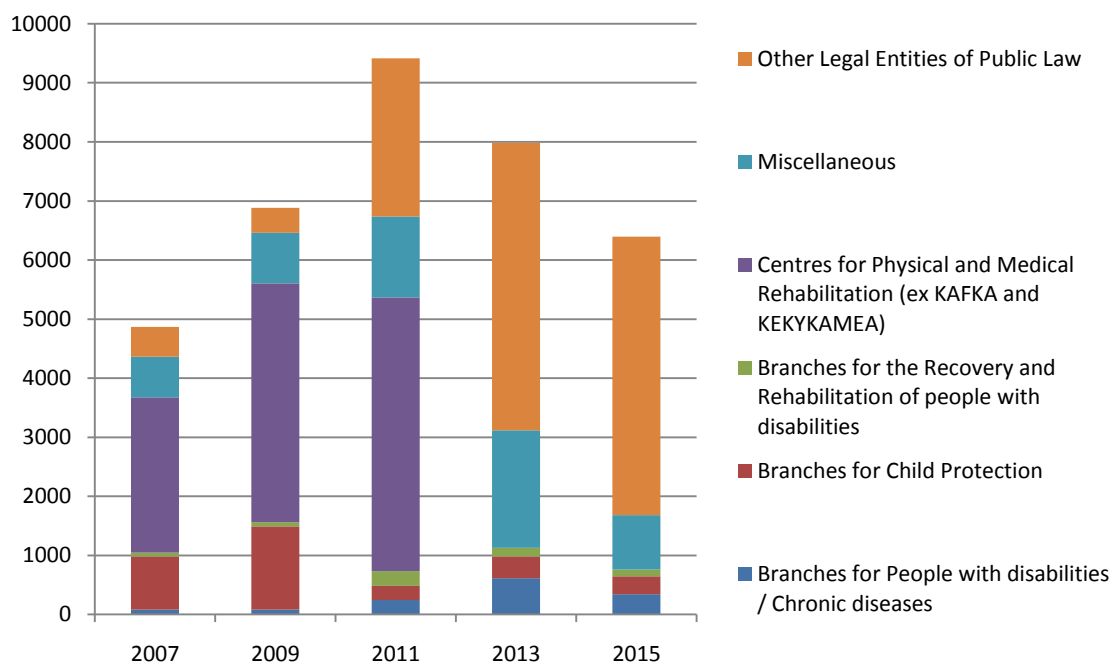
**Graph 4. Beneficiaries of IN-PATIENT care services in Social Care Units,
by category of units, 2007-2015**



**Table 4. Beneficiaries of OUT-PATIENT care services in Social Care Units,
by category of units, 2007-2015**

CATEGORY	BENEFICIARIES OF OUT-PATIENT CARE SERVICES				
	2007	2009	2011	2013	2015
Branches for People with disabilities / Chronic diseases	80	80	242	615	339
Branches for Child Protection	901	1412	241	368	305
Branches for the Recovery and Rehabilitation of people with disabilities	64	70	249	145	114
Centres for Physical and Medical Rehabilitation (KEFIAP)	2.630	4.041	4.633	0	0
Miscellaneous	687	8.58	1.370	1.991	920
Other Legal Entities of Public Law	505	4.24	2.679	4.866	4.716
Total	4.867	6.885	9.414	7.985	6.394

**Graph 5. Beneficiaries of OUT-PATIENT care services in Social Care Units,
by category of units, 2007-2015**



Information

Division of Social Statistics
Section of Health and Social Security and Protection Statistics
Alexandra Zografou, Konstantinos Giasafakis,
Tel: +30 213 135 2785
Fax: +30 213 135 2763
E-mail: social_stat@statistics.gr

EXPLANATORY NOTES

Purpose of the Survey on Social Care Units The Survey on Social Care Units monitors, at a biennial basis, the number of Social Care Units all over Greece. It is a census survey aiming at collecting non-financial data concerning the Social Care Units that operate as Legal Entities of Public Law. This survey collects data on the characteristics of the in-patient or out-patient care Units, data on their personnel and on the number of beneficiaries of the services of the Units.

Reference period The data sources are the social care units that were operating on the 31st of December of the reference year.

Coverage The survey covers Greece total. The data are collected at the level of the Region (NUTS 2). The Legal Entities of Public Law include: «Branches of Centres for Chronic Diseases», “Branches of Centres for the Recovery and Rehabilitation of People with Disabilities”, Independent Legal Entities of Public Law, “Branches of Centres for the Protection of Children” and “Branches of Centres for the Recovery and Rehabilitation of Children with Disabilities”.

Methodology The survey is a census survey covering all the Social Care Units and records the in-patient and out-patient welfare services provided by the State. Moreover, the survey collects data on the number of beneficiaries and the personnel of the units.

Definitions

- Out-patient care means care services provided to adults or minors who need help; these services are provided in a specific facility that operates during specific hours during the day (excluding overnight stay), e.g., provision of day care services to children whose family cannot fulfill their parental role on account of economic or other reasons.
- In-patient care means the care services provided to vulnerable population groups who stay on a permanent or provisional basis in a specific facility (institution, unit), which covers, firstly, their basic needs (shelter, food) and, secondly, their sentimental or psychological social needs, e.g. children cities, homes for the elderly, etc.
- Beneficiaries are the people who are entitled to receive material, psychological or sentimental care services provided by the Social Care Units.
- Personnel include all the persons employed in the social care units including permanent personnel and those working under contract of limited or unlimited duration.

Legal Framework The survey is conducted pursuant to the Law 3832/2010, as amended and in force.

References More information on the survey on Social Care Units can be found on the website of ELSTAT, at: <http://www.statistics.gr/el/statistics/-/publication/SHE27/->