



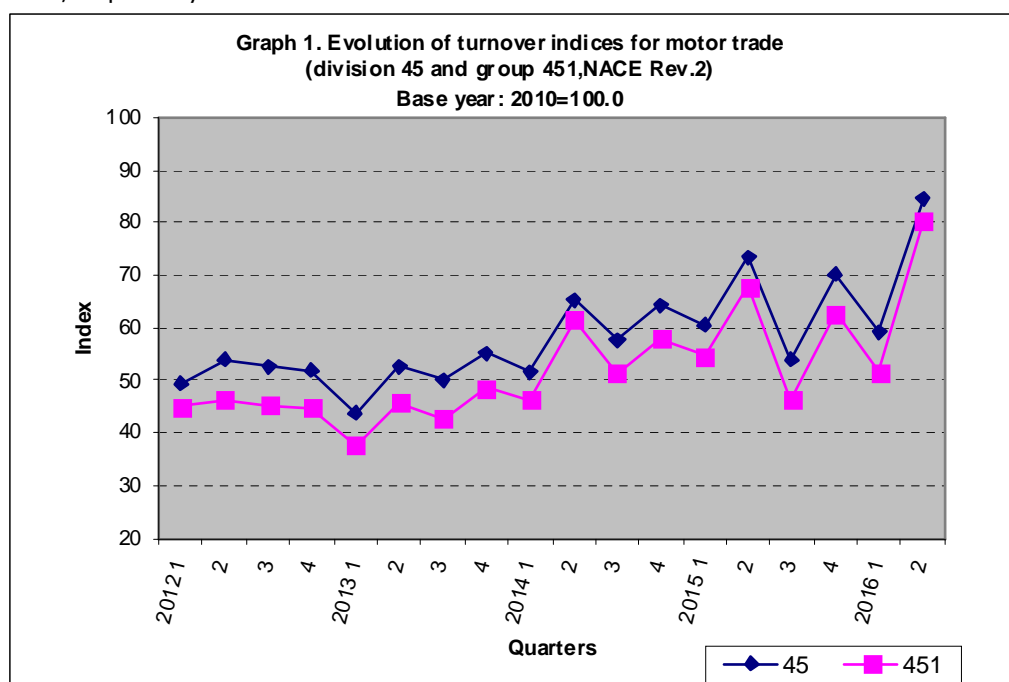
PRESS RELEASE

TURNOVER INDICES FOR MOTOR TRADE: 2nd quarter 2016

The Hellenic Statistical Authority publishes the Turnover Index for Motor Trade with base year 2010=100.0 for the 2nd quarter 2016, according to provisional and working day adjusted data, as follows:

- The turnover index for motor trade under **division 45** (Wholesale and retail trade and repair of motor vehicles and motorcycles) of NACE Rev. 2 classification of the 2nd quarter 2016 compared with the corresponding index of the 2nd quarter 2015 increased by 15.1%, while compared with the corresponding index of the 1st quarter 2016 increased by 42.7%
- The turnover index for sale of motor vehicles (**group 451** of NACE Rev. 2) of the 2nd quarter 2016 compared with the corresponding index of the 2nd quarter 2015 increased by 18.9%, while compared with the corresponding index of the 1st quarter 2016 increased by 55.9%.
- The seasonally adjusted (after eliminating the seasonal effects, e.g. the beginning of the school year, holidays, tourist period etc) turnover index for motor trade under **division 45** of the 2nd quarter 2016 compared with the corresponding index of the 1st quarter 2016 recorded an increase of 8.6%.
- The seasonally adjusted turnover index for motor vehicles (**group 451**) of the 2nd quarter 2016 compared with the corresponding index of the 1st quarter 2016 recorded an increase of 10.7%.

It should be noted that the turnover index for motor trade (division 45) in the 1st quarter 2016, which had been announced as provisional in the previous press release was revised due to new available information from 59.3 to 59.2, while the previous index of group 451 was revised from 51.8 to 51.7. Therefore, their annual changes have been revised from -1.8% to -2.0% and from -5.1% to -5.3%, respectively.

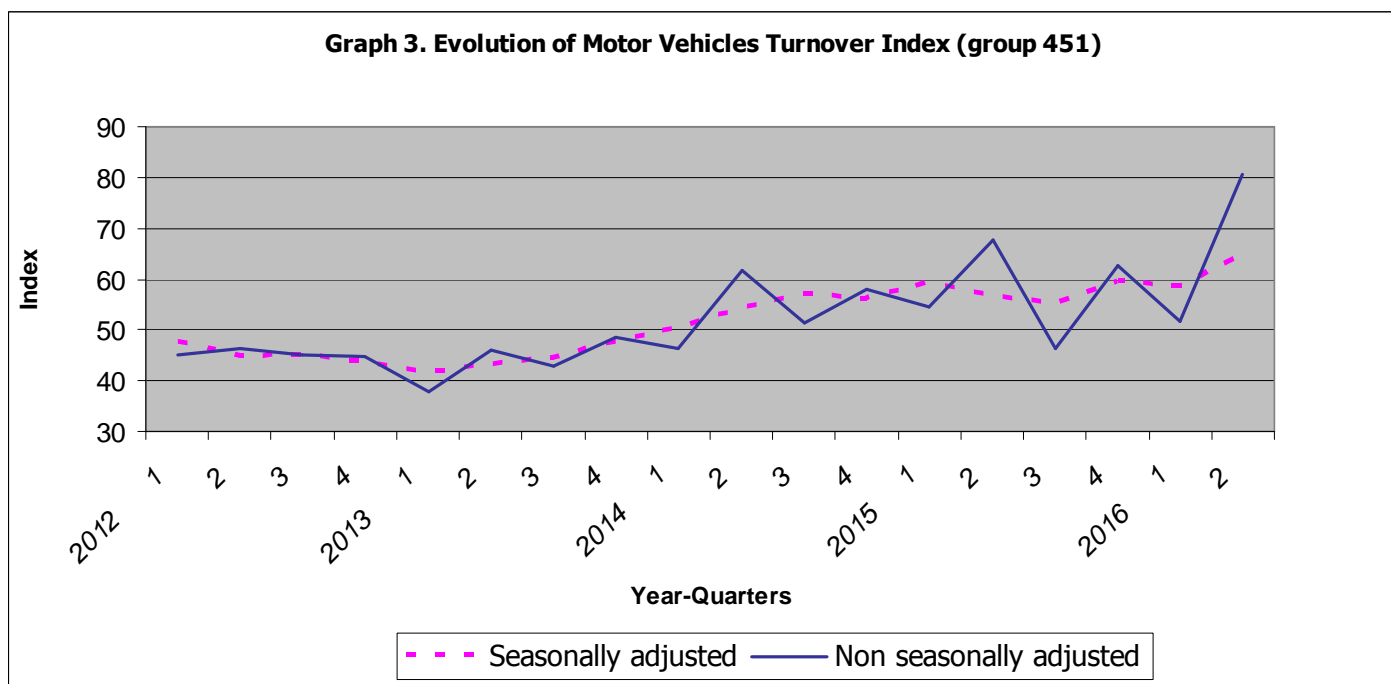
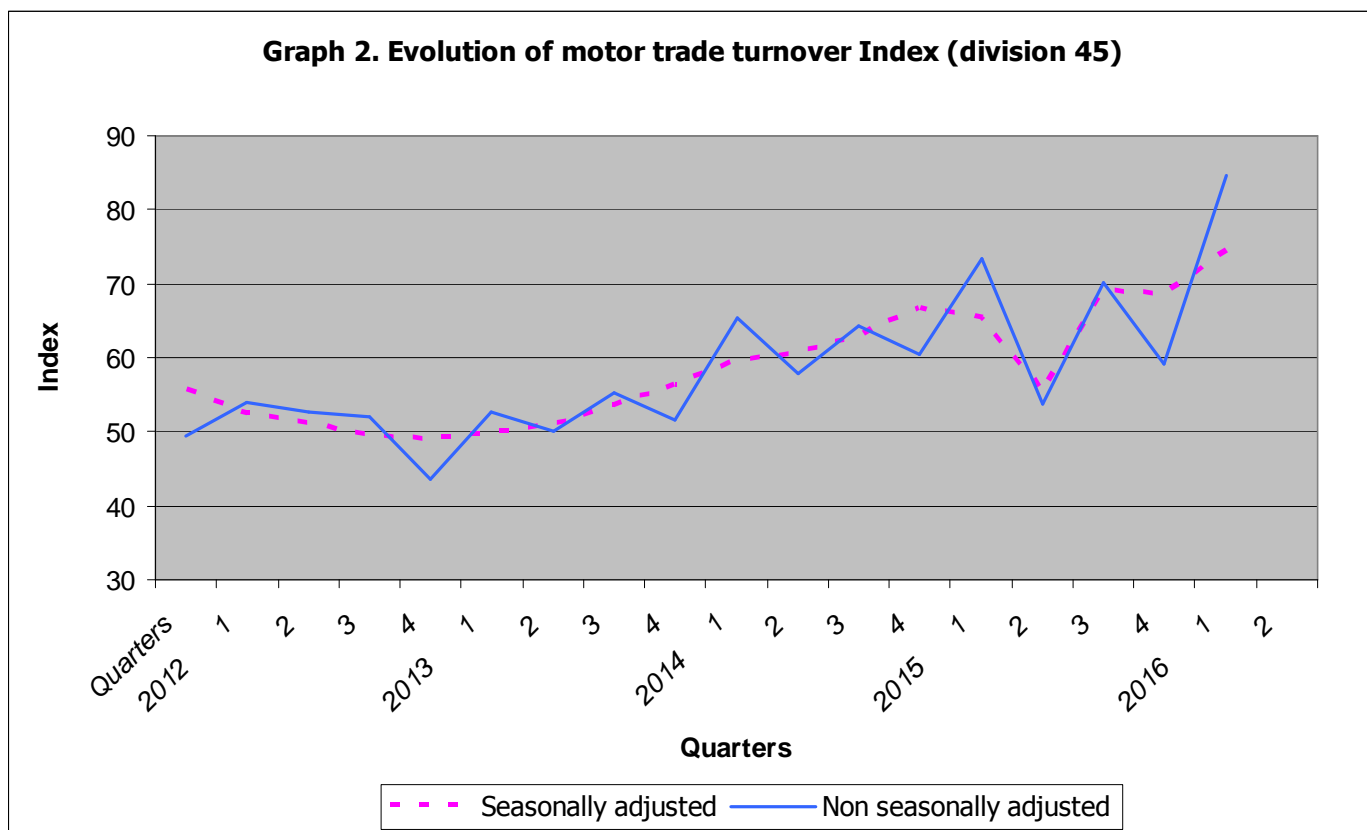


Information:
Economic and Short-Term Indicators Division
Retail Sales Value Index
Section
Fax: 0030 213 1352729
e-mail: ret.sal@statistics.gr

Ioannis Nikolaidis
Tel: 0030 213 1352127
Aikaterini Mertika
Tel: 0030 213 1352717

Time series of the index is available on the ELSTAT website:
<http://www.statistics.gr/en/statistics/-/publication/DKT45/->

Graphs 2 and 3 depict the evolution of seasonally and non seasonally adjusted turnover indices for the motor trade (45) and motor vehicles (451).



It should be noted that the whole series with seasonally adjusted indices are *recalculated* every time a *new* observation is added in time series. Therefore, the seasonally adjusted data differ from the published data of the previous Press Release.

Table 1: Evolution of turnover indices for motor trade (NACE Rev.2 division 45, group 451)*(Data adjusted for working days)***Base year: 2010=100.0**

Year-Quarter	Division 45 ⁽¹⁾			Group 451 ⁽²⁾		
	Index	Annual change (%)	Quarterly change (%)	Index	Annual change (%)	Quarterly change (%)
2012 1	49.4	-36.0	-24.1	45.0	-40.8	-29.7
2	53.9	-32.0	9.0	46.2	-38.6	2.7
3	52.6	-27.4	-2.3	45.2	-32.4	-2.1
4	52.0	-20.1	-1.3	44.8	-29.9	-0.9
<i>Average</i>	<i>52.0</i>	<i>-29.3</i>		<i>45.3</i>	<i>-35.8</i>	
2013 1	43.6	-11.7	-16.0	37.7	-16.2	-15.8
2	52.6	-2.3	20.6	45.9	-0.7	21.7
3	50.0	-5.0	-5.0	42.9	-5.2	-6.5
4	55.2	6.3	10.4	48.6	8.4	13.3
<i>Average</i>	<i>50.4</i>	<i>-3.1</i>		<i>43.8</i>	<i>-3.3</i>	
2014 1	51.6	18.3	-6.5	46.3	22.9	-4.5
2	65.3	24.1	26.6	61.6	34.2	33.0
3	57.8	15.6	-11.5	51.4	19.8	-16.6
4	64.3	16.5	11.2	57.9	19.1	12.6
<i>Average</i>	<i>59.8</i>	<i>18.7</i>		<i>54.3</i>	<i>24.0</i>	
2015 1	60.4	17.1	-6.1	54.6	17.9	-5.7
2	73.4	12.4	21.5	67.8	10.1	24.2
3	53.8	-6.9	-26.7	46.4	-9.7	-31.6
4	70.1	9.0	30.3	62.7	8.3	35.1
<i>Average</i>	<i>64.4</i>	<i>7.7</i>		<i>57.9</i>	<i>6.6</i>	
2016 1	59.2	-2.0	-15.5	51.7	-5.3	-17.5
*2	84.5	15.1	42.7	80.6	18.9	55.9

* Provisional data

⁽¹⁾ Wholesale and retail trade repair of motor vehicles and motorcycles⁽²⁾ Sale of motor vehicles

**Table 2: Evolution of seasonally adjusted turnover indices for motor trade
(NACE-Rev.2 division 45, group 451)**

Base year: 2010=100.0

Year-Quarter	Division 45 ⁽¹⁾		Group 451 ⁽²⁾	
	Index	Quarterly change (%)	Index	Quarterly change (%)
2012 1	55.7	-12.9	47.6	-26.4
2	52.5	-5.7	44.6	-6.3
3	51.2	-2.5	45.0	0.9
4	49.5	-3.2	43.5	-3.3
<i>Average</i>	<i>52.2</i>		<i>45.2</i>	
2013 1	48.9	-1.2	41.6	-4.4
2	49.8	1.8	43.1	3.5
3	51.0	2.4	44.6	3.5
4	53.6	5.0	47.5	6.4
<i>Average</i>	<i>50.8</i>		<i>44.2</i>	
2014 1	56.3	5.1	50.5	6.5
2	59.6	5.8	54.1	7.1
3	60.6	1.7	57.1	5.5
4	63.0	4.0	56.0	-1.9
<i>Average</i>	<i>59.9</i>		<i>54.4</i>	
2015 1	66.6	5.7	59.3	5.8
2	65.4	-1.8	56.8	-4.2
3	55.5	-15.1	55.0	-3.1
4	69.0	24.3	59.6	8.3
<i>Average</i>	<i>64.1</i>		<i>57.5</i>	
2016 1	68.6	-0.5	58.6	-1.6
2	74.5	8.6	64.9	10.7

⁽¹⁾ Wholesale and retail trade repair of motor vehicles and motorcycles

⁽²⁾ Sale of motor vehicles

METHODOLOGICAL NOTES

Generally	The Turnover Indices for Motor Trade are quarterly indices, which were first released in 2006, based on the year 2005=100.0.
Purpose of the index – definitions	The purpose of these indices is to measure in value terms the activity of the motor trade sector. Turnover excludes VAT and comprises the totals invoiced by the enterprise during the reference period (quarter), which correspond to sales of goods and services supplied to third parties.
Legal basis	The compilation of the turnover indices for motor trade is governed by Council Regulation (EEC) No.1165/98 of May 1998 concerning short-term statistics and the Regulation (EC) No 1158/05 of the European Parliament and Council, amending the original Regulation 1165/98. Additionally, the compilation of the turnover indices for motor trades is governed by the Regulation No. 1893/2006 of the European Parliament and of the Council of 20 December 2006 establishing the statistical classification of economic activities NACE Rev.2.
Reference period	Quarter.
Base year	2010=100.0.
Revision	Pursuant to the provisions of Council Regulation No 1165/98 concerning short-term statistics, the indices in question are updated every five (5) years in years ending in 0 or 5. The purpose of updating the Turnover Indices for Motor Trade is to adapt the indices to changes in the breakdown of the above sector. During the last revision, following the Statistical Classification NACE Rev.2, the group "retail sale of automotive fuel" was excluded from Motor Trade Sector (Division 45) and is now surveyed under Retail Trade (Division 47).
Statistical classification	The NACE Rev.2 statistical classification of economic activities is used, in conformity with Regulation (EC) 1893/2006 of the Council and the European Parliament.
Geographical coverage	The indices cover the whole country, with data coming from 46 Regional Units.
Coverage of economic activities	The indices cover division 45 and group 451 of NACE Rev 2 statistical classification of economic activities.
Statistical survey	In the framework of the survey carried out for the compilation of the turnover indices for motor trade (2010=100.0) it was decided to include 2,012 enterprises listed in the Business Register of ELSTAT, which had an annual turnover (in 2010) equal to or higher than 300,000 euros. Out of these enterprises, a random sample of 319 enterprises was therefore selected.
Calculating the indices	The indices are calculated by the chaining method. The indices are reduced to a typical quarter by multiplying the turnover estimates for the current quarter by the appropriate correction factor.
Seasonal adjustment	Seasonal adjustment is the procedure followed to remove the impact of seasonality on the time series in order to improve the comparability over time. The method used is the TRAMO-SEAT method with the use of JDemetra+ 2.0.0. The whole series with seasonally adjusted indices is <i>recalculated</i> every time a <i>new</i> observation is added in time series
Compiled index series	The time series of this index are compiled from 1 st quarter of 2000 with base year 2010=100.0. In addition, seasonally adjusted time series data are compiled.
Publication of data	Data of the Turnover Indices for motor trade (2010=100.0) are released quarterly, starting from 1 st quarter 2000.
References	More information on the methodology concerning the compilation and calculation of the indices and for the time series is available on the ELSTAT website http://www.statistics.gr/en/statistics/-/publication/DKT45/