



PRESS RELEASE

TURNOVER INDICES FOR MOTOR TRADES: 1st quarter 2015

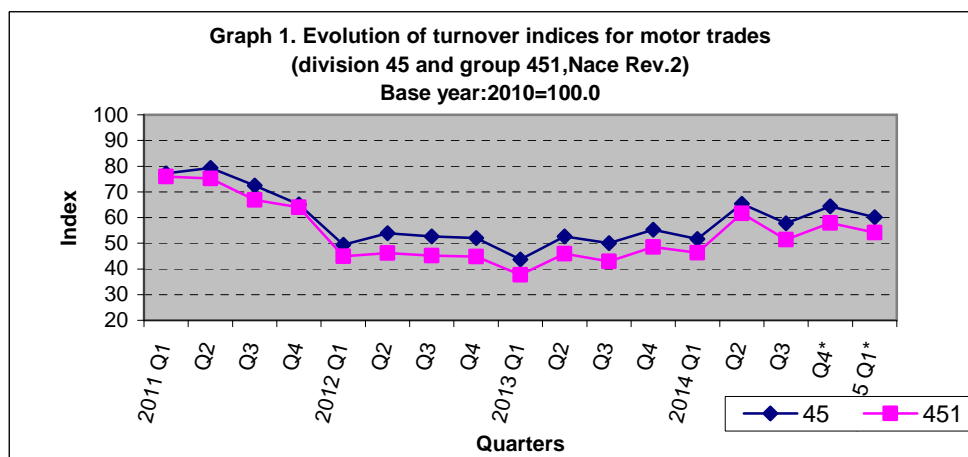
The Hellenic Statistical Authority publishes the Turnover Index for Motor Trades with base year 2010=100.0 for the 1st quarter 2015, according to provisional and working adjusted data, as follows:

- The Turnover Index for Motor Trades under **division 45** (Wholesale and retail trade and repair of motor vehicles and motorcycles) of NACE Rev. 2 classification in the 1st quarter 2015 compared with the 1st quarter 2014 increased by 16.5%, while in the 1st quarter 2014 compared with the 4th quarter 2014 decreased by 6.5%
- The Turnover Index for Sale of Motor Vehicles (**group 451** of Nace Rev. 2) in the 1st quarter 2015 compared with the 1st quarter 2014 increased by 16.8% while in the 1st quarter 2015 compared with the 4th quarter 2014 decreased by 6.6%.

The above indices adjusted after eliminating the seasonal effects (e.g, the beginning of the school year, holidays, tourist period etc) present the following evolution:

- The seasonally adjusted turnover index for Motor Trades under division 45 in the 1st quarter 2015 recorded an increase of 15.3% compared to 1st quarter 2014, while compared to 4th quarter 2014 recorded an increase of 2.8%.
- The seasonally adjusted turnover index for Motor Vehicles (group 451) in the 1st quarter 2015 recorded an increase of 16.9% compared to 1st quarter 2014, while compared to 4th quarter 2014 recorded an increase of 2.8%.

It should be noted that the Turnover Index for Motor Trades (group 45) in the 4th quarter 2014 which had been announced as provisional in the previous press release was revised due to new available information from 65.4 to 64.3, while the previous index of (group 451) was revised from 59.3 to 57.9. Therefore, their annual changes were revised for group 45 from 18.5% to 16.5% and for group 451 from 22% to 19.1%.



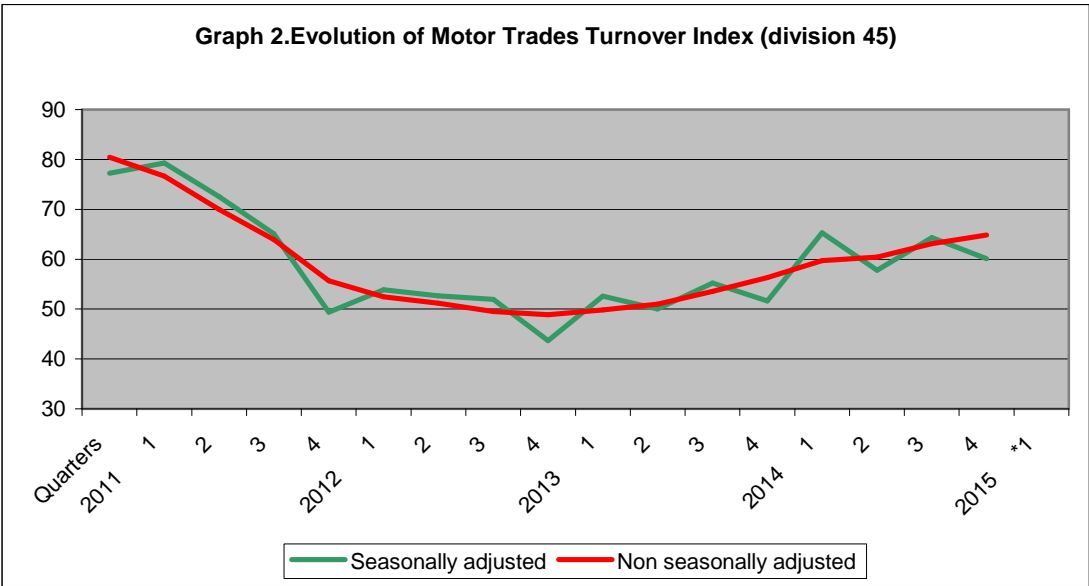
Information:
**Economic and Short-Term
Indicators Division**
Retail Sales Value Index
Section
Fax: 0030 213 1352729
e-mail: ret.sal@statistics.gr

Ioannis Nikolaidis
Tel: 0030 213 1352127
Aikaterini Mertika
Tel: 0030 213 1352717

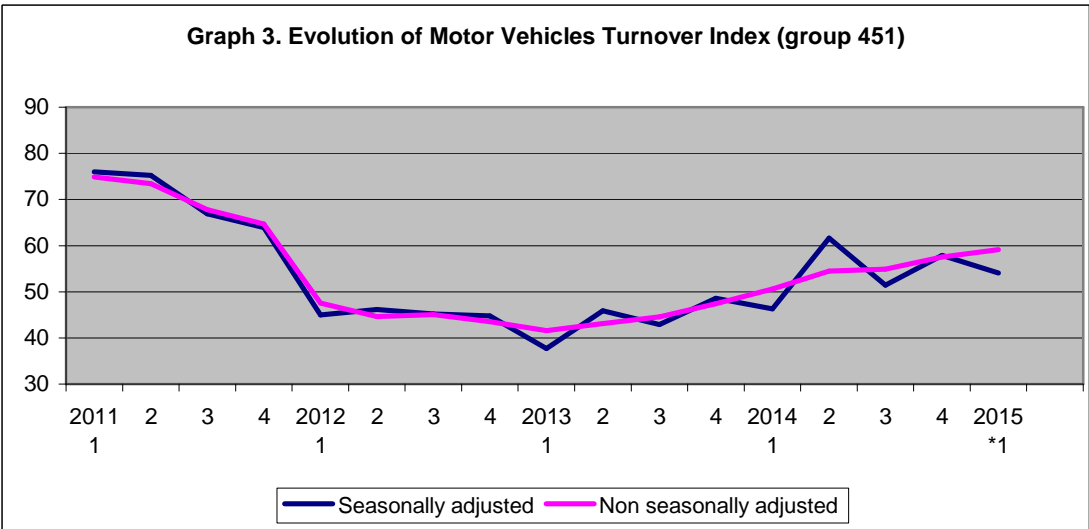
Time series of the index is available on the ELSTAT website:

http://www.statistics.gr/portal/page/portal/ESYE/PAGE-themes?p_param=A0508

Graphs 2 and 3 depict the evolution of seasonally and non seasonally adjusted indices for the Motor Trades (450) and Motor Vehicles (451) turnover.



* Provisional data



* Provisional data

It should be noted that the whole series with seasonally adjusted indices will be *recalculated* every time a *new* observation is added in time series. Therefore, the seasonally adjusted data will differ from the published data of the next Press Releases.

Table 1: Evolution of Turnover Indices for Motor Trades- (NACE-Rev.2 division 45, group 451)*(Data adjusted for working days)***Base year: 2010=100.0**

Year-Quarter	Division 45 ⁽¹⁾			Group 451 ⁽²⁾		
	Index	Year on year growth rates (%)	Quarter on quarter growth rates (%)	Index	Year on year growth rates (%)	Quarter on quarter growth rates (%)
2011 A	77.2	-40.5	-0.5	76.0	-45.6	4.6
B	79.3	-30.9	2.6	75.2	-35.1	-1.0
C	72.5	-6.7	-8.5	66.9	-6.5	-11.1
D	65.1	-16.2	-10.3	63.9	-12.0	-4.4
Average	73.5	-26.5		70.5	-29.5	
2012 A	49.4	-36.0	-24.1	45.0	-40.8	-29.7
B	53.9	-32.0	9.0	46.2	-38.6	2.7
C	52.6	-27.4	-2.3	45.2	-32.4	-2.1
D	52.0	-20.1	-1.3	44.8	-29.9	-0.9
Average	52.0	-29.3		45.3	-35.8	
2013 A	43.6	-11.7	-16.0	37.7	-16.2	-15.8
B	52.6	-2.3	20.6	45.9	-0.7	21.7
C	50.0	-5.0	-5.0	42.9	-5.2	-6.5
D	55.2	6.3	10.4	48.6	8.4	13.3
Average	50.4	-3.1		43.8	-3.3	
2014 A	51.6	18.3	-6.5	46.3	22.9	-4.5
B	65.3	24.1	26.6	61.6	34.2	33.0
C	57.8	15.6	-11.5	51.4	19.8	-16.6
D	64.3	16.5	11.2	57.9	19.1	12.6
Average	59.8	18.7		54.3	24.0	
2015 *A	60.1	16.5	-6.5	54.1	16.8	-6.6

* Provisional data

⁽¹⁾ Wholesale and retail trade repair of motor vehicles and motorcycles⁽²⁾ Sale of motor vehicles

**Table 2: Evolution of Seasonally adjusted Turnover Indices for Motor Trades-
(NACE-Rev.2 division 45, group 451)**

(Data adjusted for working days)

Base year: 2010=100.0

Year-Quarter	Division 45 ⁽¹⁾			Group 451 ⁽²⁾		
	Index	Year on year growth rates (%)	Quarter on quarter growth rates (%)	Index	Year on year growth rates (%)	Quarter on quarter growth rates (%)
2011 A	80.4	-39.0	2.2	74.9	-45.4	0.0
B	76.7	-33.6	-4.7	73.4	-37.3	-2.0
C	70.0	-9.2	-8.7	67.8	-6.9	-7.6
D	63.9	-18.7	-8.6	64.7	-13.7	-4.6
Average	72.8	-27.8		70.2	-30.2	
2012 A	55.7	-30.8	-13.0	47.6	-36.5	-26.5
B	52.5	-31.5	-5.7	44.6	-39.2	-6.2
C	51.2	-26.9	-2.5	45.0	-33.6	0.9
D	49.5	-22.5	-3.2	43.5	-32.7	-3.3
Average	52.2	-28.2		45.2	-35.6	
2013 A	48.9	-12.1	-1.3	41.6	-12.5	-4.4
B	49.8	-5.1	1.9	43.1	-3.4	3.6
C	51.0	-0.3	2.4	44.6	-1.0	3.4
D	53.5	8.1	5.0	47.4	8.9	6.4
Average	50.8	-2.7		44.2	-2.2	
2014 A	56.3	15.1	5.1	50.6	21.6	6.7
B	59.7	19.8	6.0	54.5	26.4	7.6
C	60.4	18.4	1.2	54.9	23.2	0.8
D	63.1	17.9	4.5	57.6	21.4	4.8
Average	59.9	17.9		54.4	23.1	
2015 *A	64.9	15.3	2.8	59.1	16.9	2.8

* Provisional data

⁽¹⁾ Wholesale and retail trade repair of motor vehicles and motorcycles

⁽²⁾ Sale of motor vehicles

METHODOLOGICAL NOTES

Generally	The Turnover Indices for Motor Trades are quarterly indices, which were first released in 2006, based on the year 2005=100,0.
Purpose of the index – definitions	The purpose of these indices is to measure in value terms the activity of the motor trades sector. Turnover excludes VAT and comprises the totals invoiced by the enterprise during the reference period (quarter), which correspond to sales of goods or services supplied to third parties.
Legal basis	The compilation of the Turnover Indices for Motor Trades is governed by Council Regulation (EEC) No.1165/98 “concerning short-term statistics” and the requirements of Regulation (EC) No 1158/05 of the European Parliament and Council, amending the original Regulation 1165/98. Additionally the compilation of the Turnover Indices for motor trades is governed by the Regulation No.1893/2006 of the European Parliament and of the Council for the implementation of the new statistical classification NACE Rev.2.
Reference period	Quarter.
Base year	2010=100.0.
Revision	Pursuant to the provisions of Council Regulation No 1165/98 concerning short-term statistics, the indices in question are updated every five (5) years in years ending in 0 or 5. The purpose of updating the Turnover Indices for Motor Trades is to adapt the indices to changes in the breakdown of the above sector. During the last revision, following the new Statistical Classification NACE Rev.2, the group “retail sale of automotive fuel” was excluded from Motor Trades Sector (Division 45) and is now surveyed under Retail Trade (Division 47).
Statistical classification	The new EU (Eurostat) NACE Rev.2 statistical classification of economic activities was used, in conformity with Regulation (EC) 1893/2006 of the Council and the European Parliament.
Geographical coverage	The indices cover the whole of the country, with data from 40 prefectures.
Coverage of economic activities	The indices cover division 45 and group 451 of NACE Rev 2 statistical classification of economic activities.
Statistical survey	In the framework of the survey carried out for the compilation of the Turnover Indices for Motor Trades (2010=100.0) it was decided to include 2.012 enterprises listed in the Business Register, which had an annual turnover (in 2010) equal to or higher than 300,000 euros. Out of these enterprises, a random sample of 319 enterprises was therefore selected.
Calculating the indices	The indices are calculated by the chaining method. The indices are reduced to a typical quarter by multiplying the turnover estimates for the current quarter by the appropriate correction factor.
Seasonal adjustment	Seasonal adjustment is the procedure followed to remove the impact of seasonality on the time series in order to improve the comparability over time. The method used is the TRAMO-SEAT method with the use of JDemetra 2.0.0. The whole series with seasonally adjusted indices is <i>recalculated</i> every time a <i>new</i> observation is added in time series
Compiled index series	The time series of this index are compiled from 1 st quarter of 2000 with base year 2010=100,0.
Publication of data	Data of the Turnover Indices for Motor Trades (2010=100,0) are released quarterly, 70 days after the end of the reference quarter, starting from 1 st quarter 2000.
References	More information on the methodology concerning the compilation and calculation of the indices and for the time series is available on the ELSTAT website (www.statistics.gr).