



## **PRESS RELEASE**

### **TURNOVER INDEX IN WHOLESALE TRADE: 4<sup>th</sup> quarter 2013**

The Hellenic Statistical Authority publishes the Turnover Index in Wholesale Trade for the 4<sup>th</sup> quarter 2013, according to provisional results as follows:

The Turnover Index in Wholesale Trade in the 4<sup>th</sup> quarter 2013 compared with the 4<sup>th</sup> quarter 2012 decreased by 11.4%. The index in the 4<sup>th</sup> quarter 2012 compared with the 4<sup>th</sup> quarter 2011 decreased by 5.9%.

The Turnover Index in Wholesale Trade in the 4<sup>th</sup> quarter 2013 compared with the 3<sup>rd</sup> quarter 2013 increased by 2.6%. The index in the 4<sup>th</sup> quarter 2012 compared with the 3<sup>rd</sup> quarter 2012 increased by 2.9%.

**Information:**

**Economic and Short-Term Indicators Division**

Retail Sales Value Index Section

Andriana Dafni

Tel: 0030 213

1352127

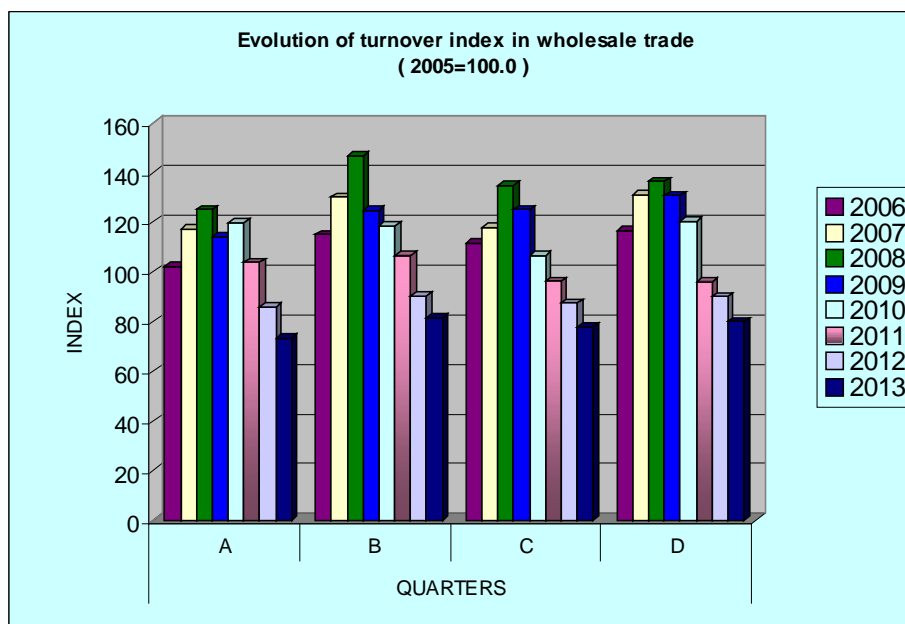
Fax: 0030 213

1352729

e-mail:

[ret.sal@statistics.gr](mailto:ret.sal@statistics.gr)

[andrdafni@statistics.gr](mailto:andrdafni@statistics.gr)



**Table: Evolution of the Turnover index in Wholesale Trade**  
(Data adjusted for working days)

Base year: 2005=100.0			
Year-Quarter	Index	Year on year growth rates (%)	Quarter on quarter growth rates (%)
2006 A	102.3	7.9	-3.4
B	115.1	14.5	12.5
C	111.6	13.1	-3.0
D	116.5	10.0	4.4
<i>Average</i>	<i>111.4</i>	<i>11.4</i>	
2007 A	117.1	14.5	0.5
B	130.1	13.0	11.1
C	118.0	5.8	-9.3
D	131.1	12.5	11.1
<i>Average</i>	<i>124.1</i>	<i>11.4</i>	
2008 A	125.2	6.9	-4.5
B	146.6	12.7	17.1
C	135.0	14.4	-7.9
D	136.4	4.0	1.0
<i>Average</i>	<i>135.8</i>	<i>9.4</i>	
2009 A	114.0	-9.0	-16.4
B	124.8	-14.9	9.5
C	125.2	-7.3	0.3
D	130.8	-4.1	4.5
<i>Average</i>	<i>123.7</i>	<i>-8.9</i>	
2010 A	119.9	5.2	-8.4
B	118.4	-5.1	-1.2
C	106.8	-14.7	-9.8
D	120.5	-7.9	12.8
<i>Average</i>	<i>116.4</i>	<i>-5.9</i>	
2011 A	103.9	-13.3	-13.8
B	106.7	-9.9	2.7
C	96.4	-9.7	-9.6
D	95.8	-20.5	-0.6
<i>Average</i>	<i>100.7</i>	<i>-13.5</i>	
2012 A	85.8	-17.4	-10.4
B	90.3	-15.3	5.3
C	87.6	-9.1	-3.0
D	90.1	-5.9	2.9
<i>Average</i>	<i>88.5</i>	<i>-12.1</i>	
2013 A	73.6	-14.2	-18.3
B	81.6	-9.6	10.8
C	77.9	-11.1	-4.6
*D	79.9	-11.4	2.6
<i>*Average</i>	<i>78.2</i>	<i>-11.5</i>	

*\*Provisional data*

## METHODOLOGICAL NOTES

<b>Generally</b>	The Wholesale Turnover Index is a quarterly index, which was first released in 2006, based on the year 2005=100,0.
<b>Purpose of the index – definitions</b>	The purpose of this index is to measure in value terms the activity of wholesale trade in the market. Turnover excludes VAT and comprises the totals invoiced by the enterprise during the reference period (quarter), which correspond to sales of goods or services supplied to third parties.
<b>Legal basis</b>	The compilation of the Wholesale Turnover Index is governed by Council Regulation (EEC) No.1165/98 “concerning short-term statistics” and the requirements of Regulation (EC) No 1158/05 of the European Parliament and Council, amending the original Regulation 1165/98. Additionally the compilation of the above index is governed by the Regulation No.1893/2006 of the European Parliament and of the Council for the implementation of the new statistical classification NACE Rev.2.
<b>Reference period</b>	Quarter.
<b>Base year</b>	2005=100.0.
<b>Revision</b>	Pursuant to the provisions of Council Regulation No 1165/98 concerning short-term statistics, the index in question is updated every five (5) years in years ending in 0 or 5. The purpose of updating the Wholesale Turnover Index is to adapt the index to changes in the breakdown of wholesale trade.
<b>Statistical classification</b>	The new EU (Eurostat) NACE Rev.2 statistical classification of economic activities was used, in conformity with Regulation (EC) 1893/2006 of the Council and the European Parliament.
<b>Geographical coverage</b>	The index covers the whole of the country, with data from 40 prefectures.
<b>Coverage of economic activities</b>	The index covers division 46 “Wholesale trade, except of motor vehicles and motorcycles” of NACE Rev 2 statistical classification of economic activities.
<b>Statistical survey</b>	In the survey for the compilation of the Wholesale Turnover Index(2005=100.0) it was decided to include 21.221 wholesale trade enterprises listed in the Business Register, having an annual turnover (in 2005) equal to or higher than 300,000 euros from which a random sample of 463 enterprises was therefore selected.
<b>Calculating the indices</b>	The index is calculated by the chaining method. The index is reduced to a typical quarter by multiplying the turnover estimates for the current quarter by the appropriate correction factor.
<b>Compiled index series</b>	The time series of this index of the period 2005-2008 (division 51 of the classification NACE Rev.1) was adjusted, during 2009, to the new classification NACE Rev.2 (division 46). Moreover, as required by Commission Regulation (EC) 472/2008 concerning backcasting, data was estimated for the years 2000-2004.
<b>Publication of data</b>	Data of the Wholesale Turnover Index(2005=100.0) are released quarterly, 70 days after the end of the reference quarter, starting from 1 <sup>st</sup> quarter 2000.
<b>References</b>	More information on the methodology concerning the compilation and calculation of the index and for the time series is available on the ELSTAT website ( <a href="http://www.statistics.gr">www.statistics.gr</a> ).