



PRESS RELEASE

TURNOVER INDEX IN WHOLESALE TRADE: 1st quarter 2015

The Hellenic Statistical Authority publishes the Turnover Index in Wholesale Trade with base year 2010=100.0 for the 1st quarter 2015 according to provisional and working adjusted data, as follows:

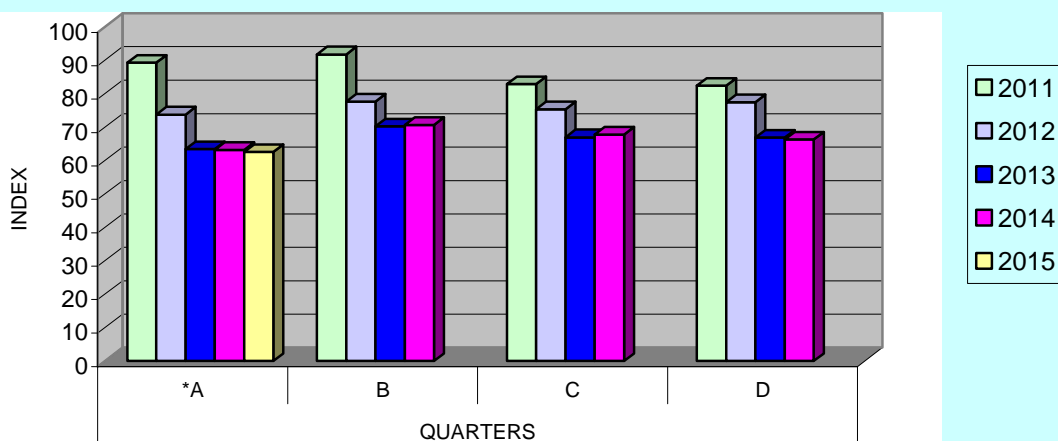
The Turnover Index in Wholesale Trade in the 1st quarter 2015 compared with the 1st quarter 2014 decreased by 1.0%, while the Turnover Index in Wholesale Trade in the 1st quarter 2015 compared with the 4th quarter 2014 decreased by 5.6%.

The above index adjusted after eliminating the seasonal effects (e.g. the beginning of the school year, holidays, tourist period etc) present the following evolution:

The seasonally adjusted turnover index in retail trade in the 1st quarter 2015 recorded a decrease of 1.7% compared to the 1st quarter 2014, while compared to the 4th quarter 2014 recorded an increase of 0.3%.

It should be noted that the Turnover Index in Wholesale Trade in the 4th quarter 2014, which had been announced as provisional in the previous press release was revised from 66.3 to 66.2 and the annual growth rate was revised from -0.7% to -0.9%.

Graph 1. Evolution of turnover index in wholesale trade
(2010=100.0)



Information:

Economic and Short-Term Indicators Division

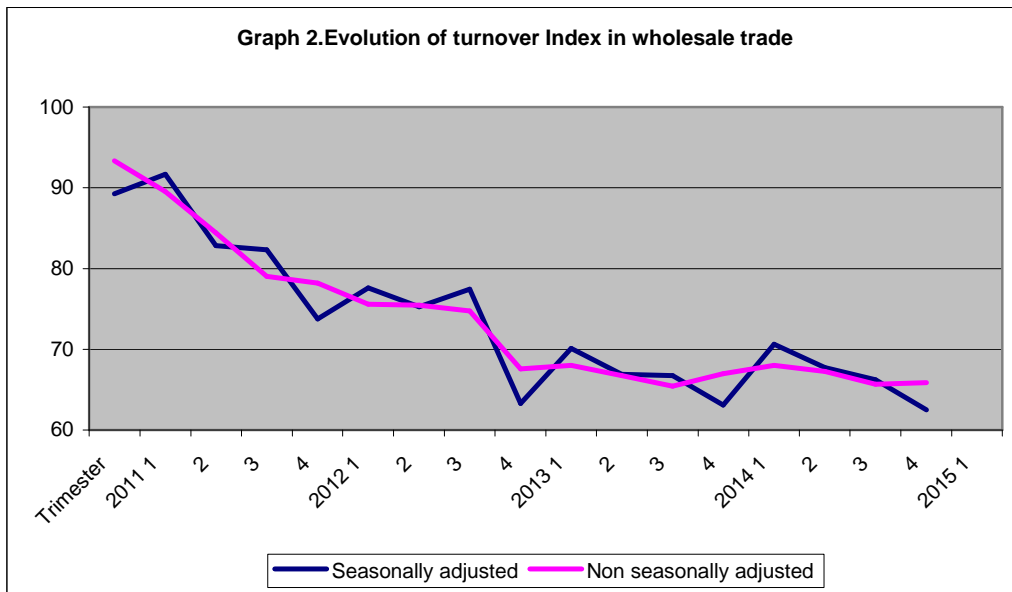
Retail Sales Value
Index Section
Fax: 0030 213 1352729
e-mail:
ret.sal@statistics.gr

I. Nikolaidis
Tel: 2131352127
i.nikolaidis@statistics.gr
Aik. Mertika
Tel: 0030 213 1352717
a.mertika@statistics.gr

Time series of the index is available on the ELSTAT website:

http://www.statistics.gr/portal/page/portal/ESYE/PAGE-themes?p_param=A0508

Graphs 2 depicts the evolution of seasonally and non seasonally adjusted index for turnover in the whole trade.



* Provisional data

It should be noted that the whole series with seasonally adjusted index will be *recalculated* every time a *new* observation is added in the time series. Therefore, the seasonally adjusted data will differ from the published data of the next Press Releases.

Table 1: Evolution of the Turnover index in Wholesale Trade
(Data adjusted for working days)

Base year: 2010=100.0

Year-Quarter	Index	Year on year growth rates (%)	Quarter on quarter growth rates (%)
2011 A	89.2	-13.3	-13.8
B	91.7	-9.9	2.7
C	82.8	-9.7	-9.6
D	82.3	-20.5	-0.6
<i>Average</i>	86.5	-13.5	
2012 A	73.7	-17.4	-10.4
B	77.6	-15.3	5.3
C	75.3	-9.1	-3.0
D	77.4	-5.9	2.9
<i>Average</i>	76.0	-12.1	
2013 A	63.3	-14.2	-18.3
B	70.1	-9.6	10.8
C	66.9	-11.1	-4.6
D	66.8	-13.8	-0.2
<i>Average</i>	66.8	-12.1	
2014 A	63.1	-0.3	-5.5
B	70.6	0.7	11.9
C	67.7	1.2	-4.1
D	66.2	-0.9	-2.2
<i>Average</i>	66.9	0.1	
*2015 A	62.5	-1.0	-5.6

* Provisional data

Table 2: Evolution of the Seasonally Adjusted Turnover index in Wholesale Trade
(Data adjusted for working days)

Base year: 2010=100.0			
Year-Quarter	Seasonally Adjusted Index	Year on year growth rates (%)	Quarter on quarter growth rates (%)
2011 A	93.3	-13.6	-5.3
B	89.6	-10.5	-4.0
C	84.4	-10.5	-5.8
D	79.0	-19.8	-6.4
<i>Average</i>	<i>86.6</i>	<i>-13.6</i>	
2012 A	78.2	-16.2	-1.0
B	75.6	-15.6	-3.4
C	75.5	-10.6	-0.1
D	74.7	-5.4	-1.0
<i>Average</i>	<i>76.0</i>	<i>-12.2</i>	
2013 A	67.6	-13.6	-9.6
B	68.0	-10.0	0.6
C	66.7	-11.6	-1.8
D	65.4	-12.4	-1.9
<i>Average</i>	<i>66.9</i>	<i>-11.9</i>	
2014 A	67.0	-0.8	2.4
B	68.0	0.0	1.5
C	67.3	0.8	-1.1
D	65.7	0.3	-2.4
<i>Average</i>	<i>67.0</i>	<i>0.1</i>	
*2015 A	65.9	-1.7	0.3

* Provisional data

METHODOLOGICAL NOTES

Generally	The Wholesale Turnover Index is a quarterly index. which was first released in 2006. based on the year 2005=100.0.
Purpose of the index – definitions	The purpose of this index is to measure in value terms the activity of wholesale trade in the market. Turnover excludes VAT and comprises the totals invoiced by the enterprise during the reference period (quarter). which correspond to sales of goods or services supplied to third parties.
Legal basis	The compilation of the Wholesale Turnover Index is governed by Council Regulation (EEC) No.1165/98 “concerning short-term statistics” and the requirements of Regulation (EC) No 1158/05 of the European Parliament and Council. amending the original Regulation 1165/98. Additionally the compilation of the above index is governed by the Regulation No.1893/2006 of the European Parliament and of the Council for the implementation of the new statistical classification NACE Rev.2.
Reference period	Quarter.
Base year	2010=100.0.
Revision	Pursuant to the provisions of Council Regulation No 1165/98 concerning short-term statistics. the index in question is updated every five (5) years in years ending in 0 or 5. The purpose of updating the Wholesale Turnover Index is to adapt the index to changes in the breakdown of wholesale trade.
Statistical classification	The new EU (Eurostat) NACE Rev.2 statistical classification of economic activities was used. in conformity with Regulation (EC) 1893/2006 of the Council and the European Parliament.
Geographical coverage	The index covers the whole of the country. with data from 46 prefectures.
Coverage of economic activities	The index covers division 46 “Wholesale trade. except of motor vehicles and motorcycles” of NACE Rev 2 statistical classification of economic activities.
Statistical survey	In the survey for the compilation of the Wholesale Turnover Index(2010=100.0) it was decided to include 19.932 wholesale trade enterprises listed in the Business Register. having an annual turnover (in 2010) equal to or higher than 300.000 euros from which a random sample of 478 enterprises was therefore selected.
Calculating the indices	The index is calculated by the chaining method. The index is reduced to a typical quarter by multiplying the turnover estimates for the current quarter by the appropriate correction factor.
Seasonal Adjustment	Seasonal adjustment is the procedure followed to remove the impact of seasonality on the time series in order to improve the comparability over time. The method used is the TRAMO-SEAT method with the use of JDemetra 2.0.0. the whole series with seasonally adjusted index is recalculated every time a new observation is added in time series.
Compiled index series	The time series of this index are compiled from 1 st quarter 2000 with base year 2010=100.0
Publication of data	Data of the Wholesale Turnover Index (2010=100.0) are released quarterly. 70 days after the end of the reference quarter. starting from 1 st quarter 2000.
References	More information on the methodology concerning the compilation and calculation of the index and for the time series is available on the ELSTAT website (www.statistics.gr).