



PRESS RELEASE

INDUSTRIAL PRODUCTION INDEX: July 2019, y-o-y decrease of 2.1%

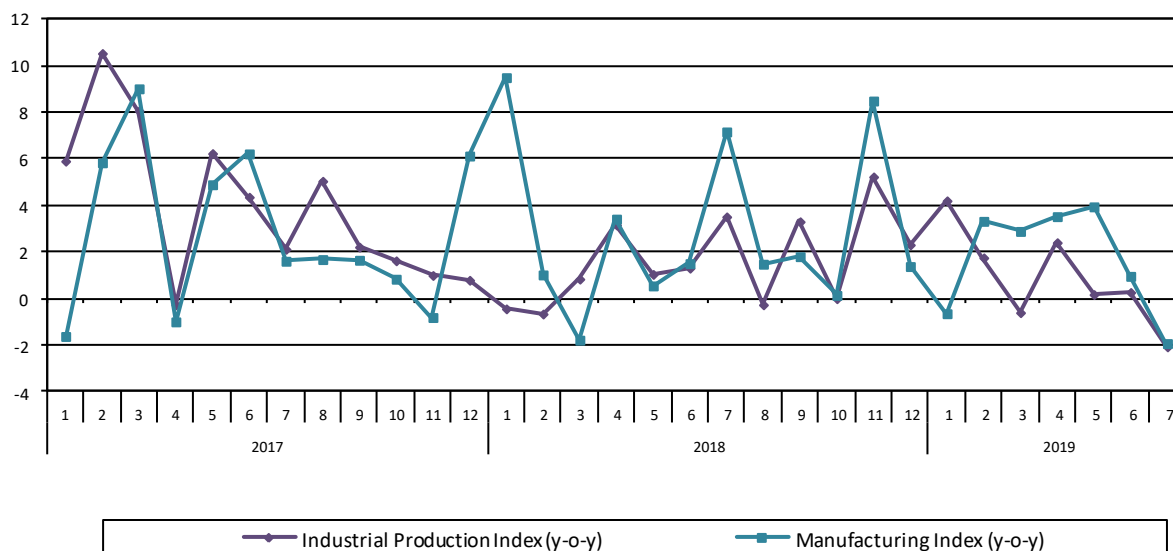
The Hellenic Statistical Authority announces the Industrial Production Index (IPI) with base year 2015=100.0 for July 2019, on the basis of provisional and working day adjusted data, as follows:

The Overall Industrial Production Index in July 2019 recorded a decrease of 2.1% compared with July 2018. The corresponding annual rate of change of the Overall IPI in July 2018 was 3.5% (Table 1).

The average Overall Industrial Production Index for the period from January to July 2019 recorded an increase of 0.8% compared with the average IPI of the period from January to July 2018 (Table 2).

The seasonally adjusted Overall Industrial Production Index in July 2019 recorded a decrease of 1.1% compared with June 2019 (Table 4).

Graph 1. Evolution of annual rates of change (y-o-y) of the Industrial Production Index and the Manufacturing Index (%)



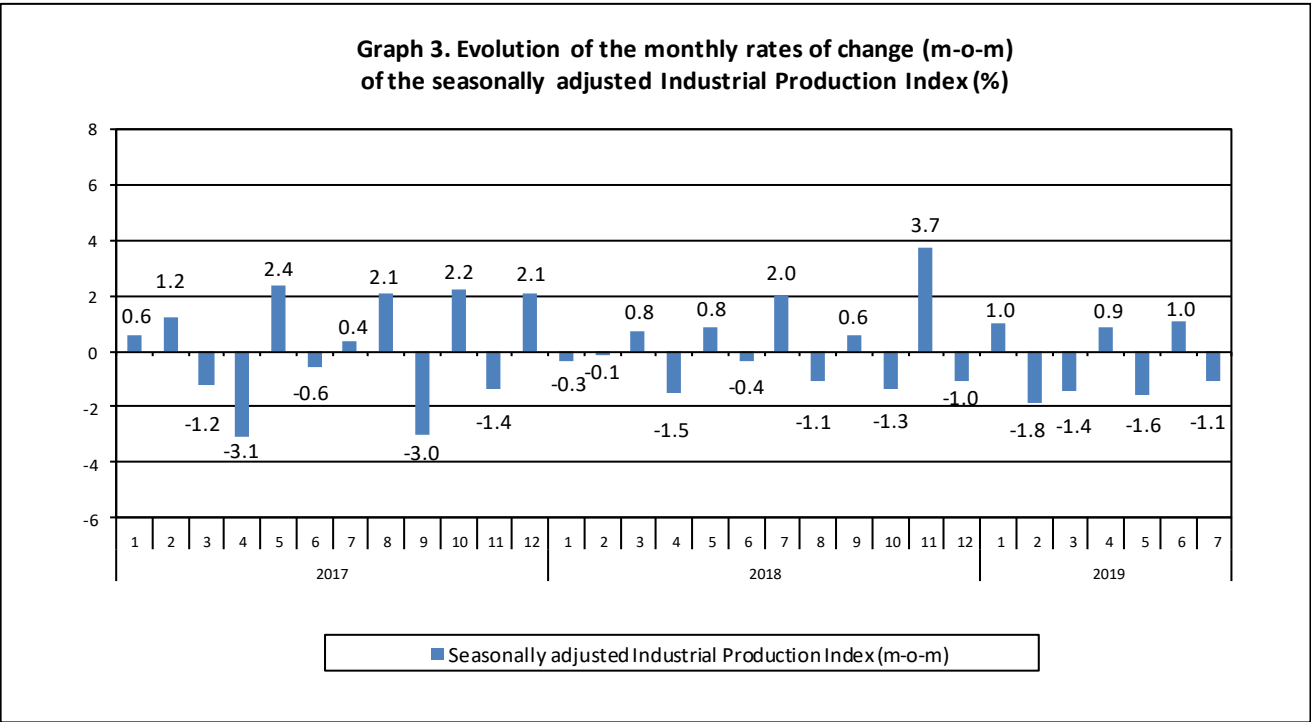
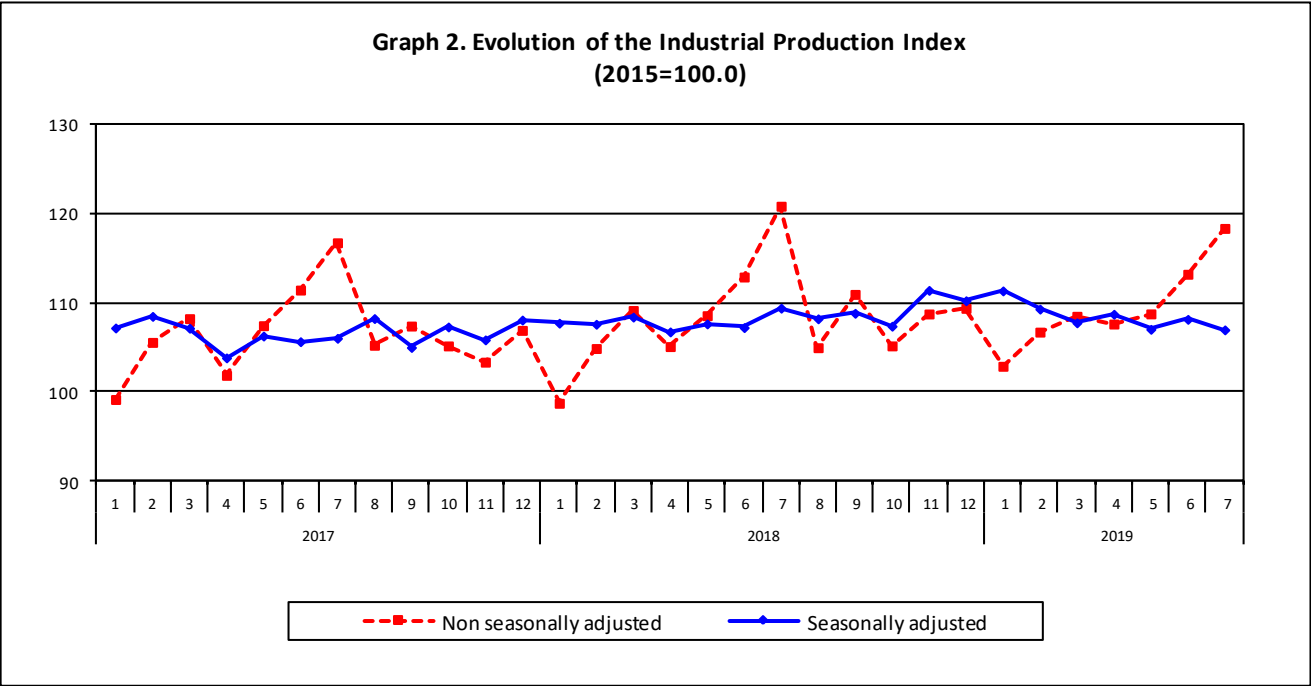
Information on methodological issues:

Business Statistics Division
Manufacture-Construction Indices and Industrial Products Section
Diamantaki Aikaterini, Thymoglou Georgia
Tel: +30 213 135 2122, 2737
Fax: +30 213 135 2738
E-mail: a.diamantaki@statistics.gr, g.thymoglou@statistics.gr

Information for data provision:

Tel: +30 213 135 2022, 2308, 2310
E-mail: data.dissem@statistics.gr

The following graphs depict the evolution of the seasonally and non-seasonally adjusted Overall Industrial Production Index, as well as the monthly rates of change (m-o-m) of the seasonally adjusted index.



It should be noted that the time series with the seasonally adjusted indices is recalculated every time a new observation is added in the time series. Therefore, the seasonally adjusted data differ from the data published in the previous Press Release.

Evolution of the Industrial Production Index in July 2019

I. Annual changes: July 2019/ July 2018 (Table 1)

The 2.1% decrease of the working day adjusted Overall IPI in July 2019, compared with the corresponding index in July 2018, is due to the annual changes of the sub-indices in the following industrial sections:

1. Decrease of:

- 10.4% in the Mining and Quarrying Index.
- 1.9% in the Manufacturing Index. The decrease was the result of the annual changes of the sub-indices in the following 2-digit divisions: food, coke and refined petroleum products, other non-metallic mineral products.
- 2.3% in the Electricity Supply Index.

2. Increase of:

- 2.9% in the Water Supply Index.

II. Rates of change of the average index in the period January – July 2019 compared with the corresponding index of the period January – July 2018 (Table 2)

The 0.8% increase of the working day adjusted Overall IPI in the 7-month period January – July 2019, compared with the corresponding index in January – July 2018, is due to the corresponding rates of change of the sub-indices in the following industrial sections:

1. Increase of:

- 1.7% in the Manufacturing Index.

2. Decrease of:

- 11.2% in the Mining and Quarrying Index.
- 1.1% in the Electricity Supply Index.
- 0.1% in the Water Supply Index.

III. Monthly changes: July 2019 / June 2019 (Table 4)

The 1.1% decrease of the seasonally adjusted Overall IPI in July 2019, compared with the corresponding index in June 2019, is due to the monthly changes of the sub-indices in the following industrial sections:

1. Decrease of:

- 4.2% in the Mining and Quarrying Index.
- 4.8% in the Electricity Supply Index.

2. Increase of:

- 0.6% in the Manufacturing Index.
- 0.1% in the Water Supply Index

The following graph depicts the evolution of the Industrial Production Index and the Industrial Sections Indices.

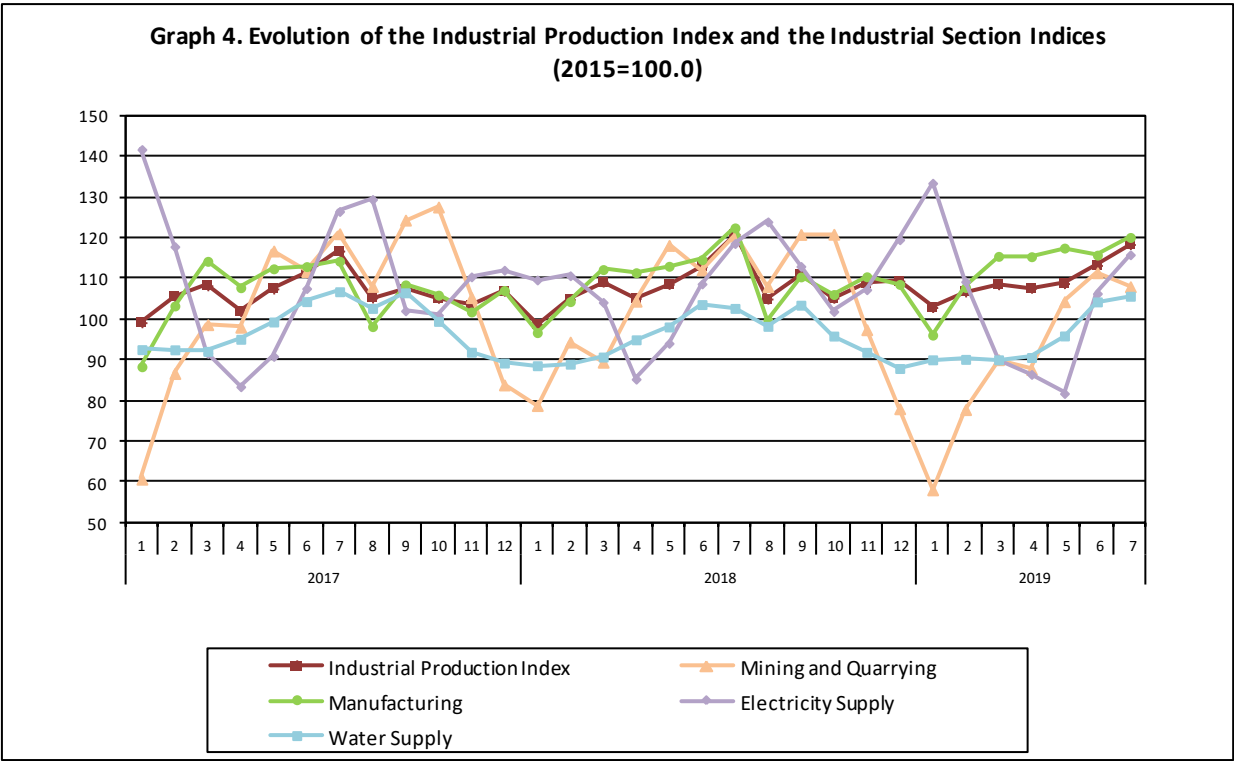


Table 1. Annual rates of change of the Industrial Production Index*(Working day adjusted data, according to the real number of working days)***Base year: 2015=100.0**

Code		Division	July			Rate of change (%)	
			2019*	2018	2017	2019/2018	2018/2017
OVERALL INDEX			118.36	120.86	116.75	-2.1	3.5
B	MINING AND QUARRYING		107.98	120.47	121.00	-10.4	-0.4
05-06-09	Mining of coal and lignite – Extraction of crude petroleum and natural gas – Mining support service activities		39.41	101.32	82.48	-61.1	22.8
07	Mining of metal ores		119.29	144.05	139.41	-17.2	3.3
08	Other mining and quarrying		114.17	115.17	120.33	-0.9	-4.3
C	MANUFACTURING		120.09	122.44	114.25	-1.9	7.2
10	Food		117.73	127.48	114.74	-7.6	11.1
11	Beverages		138.94	133.59	131.65	4.0	1.5
12	Tobacco products		123.93	84.65	108.40	46.4	-21.9
13	Textiles		104.25	113.37	115.11	-8.0	-1.5
14	Wearing apparel		97.46	94.07	104.41	3.6	-9.9
15	Leather and related products		77.80	83.87	102.38	-7.2	-18.1
16	Wood and products of wood and cork, except furniture		116.04	121.77	116.90	-4.7	4.2
17	Paper and paper products		103.50	112.52	110.89	-8.0	1.5
18	Printing and reproduction of recorded products		100.21	96.00	100.89	4.4	-4.8
19	Coke and refined petroleum products		104.53	117.61	103.48	-11.1	13.7
20	Chemicals and chemical products		132.67	130.84	115.92	1.4	12.9
21	Basic pharmaceutical products and pharmaceutical preparations		200.80	165.51	138.42	21.3	19.6
22	Rubber and plastic products		118.39	118.73	108.56	-0.3	9.4
23	Other non-metallic mineral products		115.18	128.79	125.28	-10.6	2.8
24	Basic metals		128.43	133.64	132.30	-3.9	1.0
25	Fabricated metal products, except machinery and equipment		132.04	140.33	125.00	-5.9	12.3
26	Computers, electronic and optical products		132.31	110.31	89.29	19.9	23.5
27	Electrical equipment		103.60	94.22	101.63	10.0	-7.3
28	Machinery and equipment n. e. c.		115.02	105.73	111.75	8.8	-5.4
29	Motor vehicles, trailers and semi-trailers		81.46	83.49	120.37	-2.4	-30.6
30	Other transport equipment		76.60	63.36	69.30	20.9	-8.6
31	Furniture		124.54	120.89	108.26	3.0	11.7
32	Other manufacturing		127.29	113.39	112.24	12.3	1.0
33	Repair and installation of machinery and equipment		83.25	89.27	97.23	-6.7	-8.2
D	ELECTRICITY SUPPLY		115.83	118.58	126.47	-2.3	-6.2
35	Electricity supply		115.83	118.58	126.47	-2.3	-6.2
E	WATER SUPPLY		105.63	102.65	106.74	2.9	-3.8
36	Water collection, treatment and supply		105.63	102.65	106.74	2.9	-3.8
MAIN INDUSTRIAL GROUPINGS							
1	Energy		111.11	116.59	117.14	-4.7	-0.5
2	Intermediate goods		116.73	122.97	117.61	-5.1	4.6
3	Capital goods		112.52	108.59	107.36	3.6	1.1
4	Consumer Durables		119.26	109.96	107.35	8.5	2.4
5	Consumer Non-Durables		129.87	128.15	118.54	1.3	8.1

* Provisional data

Note: The indices are rounded up to two decimal digits when published and percentage changes up to one decimal digit when published.

Table 2. Average indices of the period January – July and rates of change (%) of the Industrial Production Index
(Working day adjusted data, according to the real number of working days)

Base year: 2015=100.0

Code		Division	Average indices of the period Jan.-July			Rate of change (%)	
			2019*	2018	2017	2019/2018	2018/2017
OVERALL INDEX			109.43	108.59	107.20	0.8	1.3
B	MINING AND QUARRYING		91.03	102.52	99.06	-11.2	3.5
05-06-09	Mining of coal and lignite – Extraction of crude petroleum and natural gas – Mining support service activities		67.76	75.96	91.99	-10.8	-17.4
07	Mining of metal ores		111.29	137.78	99.24	-19.2	38.8
08	Other mining and quarrying		87.47	94.30	100.04	-7.2	-5.7
C	MANUFACTURING		112.57	110.67	107.58	1.7	2.9
10	Food		103.90	103.58	101.23	0.3	2.3
11	Beverages		105.90	106.32	99.21	-0.4	7.2
12	Tobacco products		115.67	83.47	105.94	38.6	-21.2
13	Textiles		107.27	114.38	118.14	-6.2	-3.2
14	Wearing apparel		87.06	92.20	95.02	-5.6	-3.0
15	Leather and related products		111.41	113.35	121.63	-1.7	-6.8
16	Wood and products of wood and cork, except furniture		109.32	106.13	108.76	3.0	-2.4
17	Paper and paper products		104.04	107.86	106.36	-3.5	1.4
18	Printing and reproduction of recorded products		101.52	98.30	97.23	3.3	1.1
19	Coke and refined petroleum products		106.48	115.24	112.90	-7.6	2.1
20	Chemicals and chemical products		130.64	122.20	114.54	6.9	6.7
21	Basic pharmaceutical products and pharmaceutical preparations		167.68	134.14	113.88	25.0	17.8
22	Rubber and plastic products		118.81	110.23	108.52	7.8	1.6
23	Other non-metallic mineral products		113.51	119.52	116.13	-5.0	2.9
24	Basic metals		130.36	130.65	127.17	-0.2	2.7
25	Fabricated metal products, except machinery and equipment		122.01	123.52	118.09	-1.2	4.6
26	Computers, electronic and optical products		140.73	109.31	99.11	28.7	10.3
27	Electrical equipment		105.42	103.21	110.19	2.1	-6.3
28	Machinery and equipment n. e. c.		107.39	103.09	101.81	4.2	1.3
29	Motor vehicles, trailers and semi-trailers		78.62	82.68	88.42	-4.9	-6.5
30	Other transport equipment		54.61	59.45	62.43	-8.1	-4.8
31	Furniture		121.84	122.68	104.02	-0.7	17.9
32	Other manufacturing		110.23	105.05	103.30	4.9	1.7
33	Repair and installation of machinery and equipment		90.20	86.25	85.71	4.6	0.6
D	ELECTRICITY SUPPLY		103.28	104.42	108.48	-1.1	-3.7
35	Electricity supply		103.28	104.42	108.48	-1.1	-3.7
E	WATER SUPPLY		95.21	95.35	97.50	-0.1	-2.2
36	Water collection, treatment and supply		95.21	95.35	97.50	-0.1	-2.2
MAIN INDUSTRIAL GROUPINGS							
1	Energy		103.41	106.86	108.76	-3.2	-1.7
2	Intermediate goods		113.55	114.50	111.97	-0.8	2.3
3	Capital goods		108.32	103.21	98.45	5.0	4.8
4	Consumer Durables		108.67	111.39	105.83	-2.4	5.3
5	Consumer Non-Durables		113.84	107.36	103.97	6.0	3.3

* Provisional data

Note: The indices are rounded up to two decimal digits when published and percentage changes up to one decimal digit when published.

Table 3. Monthly rate of change of the Industrial Production Index*(Working day adjusted data, according to the real number of working days)***Base year: 2015=100.0**

Code	Division	July 2019*	June 2019**	Rate of change (%) July 2019 / June 2019
OVERALL INDEX		118.36	113.21	4.6
B	MINING AND QUARRYING	107.98	111.42	-3.1
05-06-09	Mining of coal and lignite – Extraction of crude petroleum and natural gas – Mining support service activities	39.41	68.68	-42.6
07	Mining of metal ores	119.29	131.52	-9.3
08	Other mining and quarrying	114.17	110.78	3.1
C	MANUFACTURING	120.09	115.74	3.8
10	Food	117.73	105.54	11.6
11	Beverages	138.94	127.73	8.8
12	Tobacco products	123.93	139.11	-10.9
13	Textiles	104.25	111.84	-6.8
14	Wearing apparel	97.46	79.13	23.2
15	Leather and related products	77.80	74.57	4.3
16	Wood and products of wood and cork, except furniture	116.04	124.10	-6.5
17	Paper and paper products	103.50	106.69	-3.0
18	Printing and reproduction of recorded products	100.21	101.54	-1.3
19	Coke and refined petroleum products	104.53	107.94	-3.2
20	Chemicals and chemical products	132.67	133.11	-0.3
21	Basic pharmaceutical products and pharmaceutical preparations	200.80	156.12	28.6
22	Rubber and plastic products	118.39	119.37	-0.8
23	Other non-metallic mineral products	115.18	115.06	0.1
24	Basic metals	128.43	128.56	-0.1
25	Fabricated metal products, except machinery and equipment	132.04	135.03	-2.2
26	Computers, electronic and optical products	132.31	157.77	-16.1
27	Electrical equipment	103.60	110.94	-6.6
28	Machinery and equipment n. e. c.	115.02	109.87	4.7
29	Motor vehicles, trailers and semi-trailers	81.46	81.72	-0.3
30	Other transport equipment	76.60	66.49	15.2
31	Furniture	124.54	140.46	-11.3
32	Other manufacturing	127.29	116.32	9.4
33	Repair and installation of machinery and equipment	83.25	87.22	-4.5
D	ELECTRICITY SUPPLY	115.83	106.30	9.0
35	Electricity supply	115.83	106.30	9.0
E	WATER SUPPLY	105.63	104.25	1.3
36	Water collection, treatment and supply	105.63	104.25	1.3
MAIN INDUSTRIAL GROUPINGS				
1	Energy	111.11	106.54	4.3
2	Intermediate goods	116.73	119.18	-2.1
3	Capital goods	112.52	113.53	-0.9
4	Consumer Durables	119.26	125.08	-4.7
5	Consumer Non-Durables	129.87	115.95	12.0

* Provisional data **Revised data

Note: The indices are rounded up to two decimal digits when published and percentage changes up to one decimal digit when published.

Table 4. Monthly rate of change of the seasonally adjusted Industrial Production Index

Base year: 2015=100.0

Code	Division	July 2019	June 2019	Rate of change (%) July 2019 / June 2019
OVERALL INDEX		106.96	108.14	-1.1
B	MINING AND QUARRYING	93.86	98.00	-4.2
05-06-09	Mining of coal and lignite – Extraction of crude petroleum and natural gas – Mining support service activities	–	–	–
07	Mining of metal ores	111.49	125.88	-11.4
08	Other mining and quarrying	94.02	94.37	-0.4
C	MANUFACTURING	110.31	109.68	0.6
10	Food	102.03	104.29	-2.2
11	Beverages	100.63	98.38	2.3
12	Tobacco products	120.15	135.29	-11.2
13	Textiles	98.00	99.63	-1.6
14	Wearing apparel	91.12	87.04	4.7
15	Leather and related products	98.93	95.88	3.2
16	Wood and products of wood and cork, except furniture	102.69	109.06	-5.8
17	Paper and paper products	97.03	105.00	-7.6
18	Printing and reproduction of recorded products	101.87	97.23	4.8
19	Coke and refined petroleum products	105.67	110.09	-4.0
20	Chemicals and chemical products	121.84	121.93	-0.1
21	Basic pharmaceutical products and pharmaceutical preparations	165.57	156.13	6.0
22	Rubber and plastic products	110.64	112.95	-2.0
23	Other non-metallic mineral products	106.60	102.51	4.0
24	Basic metals	124.97	117.80	6.1
25	Fabricated metal products, except machinery and equipment	116.02	116.64	-0.5
26	Computers, electronic and optical products	141.38	158.49	-10.8
27	Electrical equipment	99.92	101.22	-1.3
28	Machinery and equipment n. e. c.	109.07	101.35	7.6
29	Motor vehicles, trailers and semi-trailers	77.13	72.29	6.7
30	Other transport equipment	68.92	67.28	2.4
31	Furniture	120.96	117.30	3.1
32	Other manufacturing	114.27	106.53	7.3
33	Repair and installation of machinery and equipment	84.69	83.86	1.0
D	ELECTRICITY SUPPLY	99.74	104.81	-4.8
35	Electricity supply	99.74	104.81	-4.8
E	WATER SUPPLY	95.48	95.37	0.1
36	Water collection, treatment and supply	95.48	95.37	0.1
MAIN INDUSTRIAL GROUPINGS				
1	Energy	101.96	105.28	-3.2
2	Intermediate goods	107.66	109.80	-1.9
3	Capital goods	110.40	109.25	1.1
4	Consumer Durables	109.11	104.80	4.1
5	Consumer Non-Durables	111.44	110.19	1.1

Notes:

1. The indices are rounded up to two decimal digits when published and percentage changes up to one decimal digit when published.
2. The whole time-series with seasonally adjusted indices is recalculated every time a new observation is added in the time-series.
3. The composed index of divisions 05-06-09 is not seasonally adjusted, due to the fact that it is calculated from January 2015 and thus the number of observations is not adequate.

Table 5. Evolution of the Overall Industrial Production Index
(Working day adjusted data, according to the real number of working days)
Base year: 2015=100.0

Year and month	Overall Index	Monthly rate of change (%)	Annual rate of change (%)	12-month average indices (moving average)	Rate of change of the 12-month average indices (%)
2017: 1	99.14	-6.5	5.9	103.01	2.7
2	105.55	6.5	10.5	103.85	3.8
3	108.22	2.5	8.1	104.52	4.6
4	101.85	-5.9	-0.3	104.50	4.4
5	107.43	5.5	6.2	105.03	4.5
6	111.43	3.7	4.4	105.42	4.3
7	116.75	4.8	2.1	105.62	4.0
8	105.23	-9.9	5.1	106.04	4.2
9	107.39	2.1	2.2	106.24	4.4
10	105.16	-2.1	1.6	106.38	4.0
11	103.34	-1.7	1.0	106.46	3.9
12	106.90	3.5	0.8	106.53	3.9
Annual average	106.53				
2018: 1	98.71	-7.7	-0.4	106.50	3.4
2	104.86	6.2	-0.7	106.44	2.5
3	109.14	4.1	0.8	106.52	1.9
4	105.08	-3.7	3.2	106.79	2.2
5	108.56	3.3	1.0	106.88	1.8
6	112.90	4.0	1.3	107.00	1.5
7	120.86	7.0	3.5	107.34	1.6
8	104.96	-13.2	-0.3	107.32	1.2
9	110.95	5.7	3.3	107.62	1.3
10	105.16	-5.2	0.004	107.62	1.2
11	108.75	3.4	5.2	108.07	1.5
12	109.38	0.6	2.3	108.28	1.6
Annual average	108.28				
2019*: 1	102.87	-6.0	4.2	108.62	2.0
2	106.71	3.7	1.8	108.78	2.2
3	108.49	1.7	-0.6	108.72	2.1
4	107.62	-0.8	2.4	108.93	2.0
5	108.76	1.1	0.2	108.95	1.9
6	113.21	4.1	0.3	108.98	1.8
7*	118.36	4.6	-2.1	108.77	1.3

* Provisional data

Note: The indices are rounded up to two decimal digits when published and percentage changes up to one decimal digit when published.

Table 6. Monthly evolution of the seasonally adjusted Overall Industrial Production Index and Main Industrial Groupings

Base year: 2015=100.0

Year and month		Overall Index		Energy		Intermediate goods		Capital goods		Consumer durables		Consumer non-durables	
		Index	Monthly rate of change (%)	Index	Monthly rate of change (%)	Index	Monthly rate of change (%)	Index	Monthly rate of change (%)	Index	Monthly rate of change (%)	Index	Monthly rate of change (%)
2017:	1	107.17	0.6	119.96	4.4	104.54	2.5	93.16	-5.0	91.06	2.4	98.28	-4.7
	2	108.48	1.2	113.16	-5.7	109.52	4.8	106.55	14.4	101.16	11.1	102.89	4.7
	3	107.15	-1.2	106.78	-5.6	110.85	1.2	103.25	-3.1	110.71	9.4	105.56	2.6
	4	103.81	-3.1	107.08	0.3	107.18	-3.3	93.67	-9.3	99.45	-10.2	100.14	-5.1
	5	106.27	2.4	108.73	1.5	109.24	1.9	102.67	9.6	104.32	4.9	102.03	1.9
	6	105.63	-0.6	107.53	-1.1	107.98	-1.2	103.89	1.2	103.73	-0.6	102.08	0.1
	7	106.01	0.4	107.15	-0.4	110.04	1.9	105.42	1.5	100.32	-3.3	101.95	-0.1
	8	108.23	2.1	108.86	1.6	114.27	3.8	98.04	-7.0	99.23	-1.1	105.93	3.9
	9	104.99	-3.0	103.81	-4.6	109.02	-4.6	101.55	3.6	102.42	3.2	104.31	-1.5
	10	107.29	2.2	107.56	3.6	111.54	2.3	101.01	-0.5	104.00	1.5	105.47	1.1
	11	105.84	-1.4	111.17	3.4	107.47	-3.7	94.90	-6.0	101.35	-2.6	101.24	-4.0
	12	108.06	2.1	106.98	-3.8	111.98	4.2	100.57	6.0	111.92	10.4	108.10	6.8
Annual average		106.58		109.06		109.47		100.39		102.47		103.17	
2018:	1	107.71	-0.3	104.14	-2.7	113.46	1.3	111.76	11.1	112.10	0.2	106.28	-1.7
	2	107.59	-0.1	109.06	4.7	110.67	-2.5	100.20	-10.3	108.04	-3.6	105.34	-0.9
	3	108.40	0.8	113.80	4.3	108.21	-2.2	102.31	2.1	105.63	-2.2	103.76	-1.5
	4	106.73	-1.5	107.69	-5.4	111.23	2.8	110.25	7.8	107.04	1.3	101.14	-2.5
	5	107.63	0.8	109.57	1.7	109.60	-1.5	105.97	-3.9	106.27	-0.7	104.27	3.1
	6	107.21	-0.4	107.76	-1.7	109.61	0.01	103.77	-2.1	109.11	2.7	105.51	1.2
	7	109.40	2.0	106.87	-0.8	114.12	4.1	106.39	2.5	101.93	-6.6	109.95	4.2
	8	108.20	-1.1	111.12	4.0	113.39	-0.6	105.01	-1.3	100.85	-1.1	101.86	-7.4
	9	108.82	0.6	112.57	1.3	110.45	-2.6	109.21	4.0	99.86	-1.0	103.39	1.5
	10	107.37	-1.3	107.80	-4.2	108.78	-1.5	104.69	-4.1	101.06	1.2	106.79	3.3
	11	111.40	3.7	110.22	2.2	110.92	2.0	108.21	3.4	100.98	-0.1	114.56	7.3
	12	110.23	-1.0	110.71	0.4	108.47	-2.2	107.35	-0.8	103.83	2.8	112.11	-2.1
Annual average		108.39		109.28		110.74		106.26		104.73		106.25	
2019:	1	111.34	1.0	114.60	3.5	109.08	0.6	109.53	2.0	100.82	-2.9	110.16	-1.7
	2	109.29	-1.8	107.25	-6.4	109.68	0.6	113.77	3.9	101.85	1.0	110.66	0.4
	3	107.75	-1.4	100.81	-6.0	112.23	2.3	112.46	-1.2	99.12	-2.7	111.85	1.1
	4	108.72	0.9	103.76	2.9	111.41	-0.7	109.40	-2.7	105.28	6.2	112.60	0.7
	5	107.02	-1.6	98.89	-4.7	110.54	-0.8	108.78	-0.6	105.26	-0.02	113.74	1.0
	6	108.14	1.0	105.28	6.5	109.80	-0.7	109.25	0.4	104.80	-0.4	110.19	-3.1
	7	106.96	-1.1	101.96	-3.2	107.66	-1.9	110.40	1.1	109.11	4.1	111.44	1.1

Notes:

1. The indices are rounded up to two decimal digits when published and percentage changes up to one decimal digit when published.
2. The whole time-series with seasonally adjusted indices is recalculated every time a new observation is added in the time-series.

METHODOLOGICAL NOTES

Generally	The Industrial Production Index (IPI) is compiled since 1959.
Purpose of the index	The IPI is an important business cycle indicator, which shows the monthly activity in the Mining and Quarrying, Manufacturing, Electricity and Water Supply divisions. More specifically, the objective of the Industrial Production Index is to compare the magnitude (volume) of the output in the current month with the corresponding output in any given period which is considered as base period. The IPI shows the evolution of the value added of the production factors cost, at constant prices.
Legal basis	The compilation of the IPI is governed by Council Regulation (EC) No 1165/98 concerning short-term statistics. Furthermore, the IPI is governed by Regulation (EC) No 1893/2006 of the European Parliament and of the Council, by Commission Regulation (EC) No 656/2007 and by Council Regulation (EC) No 451/2008.
Reference period	Month.
Base year	2015=100.0.
Revision	The IPI is a fixed base index. The Industrial Production Index was currently revised with new base year 2015 (2015=100.0) according to the provisions of Council Regulation No 1165/98 concerning short-term statistics. Short-term indices are revised every five (5) years, particularly in calendar years ending in 0 or 5.
Statistical classifications	At the level of branches of economic activities, the statistical classification of economic activities NACE Rev.2 of EU was used (Regulation No 1893/2006), while at the level of main industrial groups, the allocation of two-digit and three-digit NACE Rev. 2 headings to categories of aggregate classification was used, in accordance with Council Regulation No 656/2007. At product level, the statistical classification CPA 2008 of EU was used, according to Council Regulation No 451/2008.
Geographical coverage	The Index covers the whole Country.
Coverage of economic activities	The index covers all the sections of industry, the main industrial groups, all levels of economic activities (divisions, groups and classes) and the level of products.
Statistical survey	The data are collected from a sample of 1,263 enterprises. The survey covers 325 products and the measurement of the surveyed products is made in terms of output quantities or in terms of production value or turnover, according to the specific features in each branch of economic activity.
Seasonal adjustment	Seasonal adjustment is the procedure followed to remove the impact of seasonality on the time-series (i.e. the impact of monthly effects, e.g. holidays, tourist period etc), in order to improve comparability over time. The method used is the TRAMO-SEATS method with the use of JDemetra+ 2.0.0. For the seasonal adjustment of the Industrial Production Index at 2-digit level of NACE Rev.2, at section level (B – Mining and Quarrying, C – Manufacturing, D – Electricity and E – Water Supply) and for the Main Industrial Groupings (MIGs), the direct approach is applied, namely each time-series is seasonally adjusted independently. For the overall Industrial Production Index, the indirect approach is applied, with the seasonally adjusted IPI being computed by aggregating the seasonally adjusted MIGs using appropriate weights.
Publication of data	The revised IPI with the new base year 2015 (2015=100.0) is released since July 2019, with May 2019 as the first reference month. Data with base year 2015=100.0 are available from January 2000 onwards.
References	More information about the methodology concerning the compilation and calculation of the index and for the time series is available on the website of the Hellenic Statistical Authority (ELSTAT) (http://www.statistics.gr/en/statistics/-/publication/DKT21/).