



HELLENIC REPUBLIC
HELLENIC STATISTICAL AUTHORITY



Piraeus, 31 October 2019

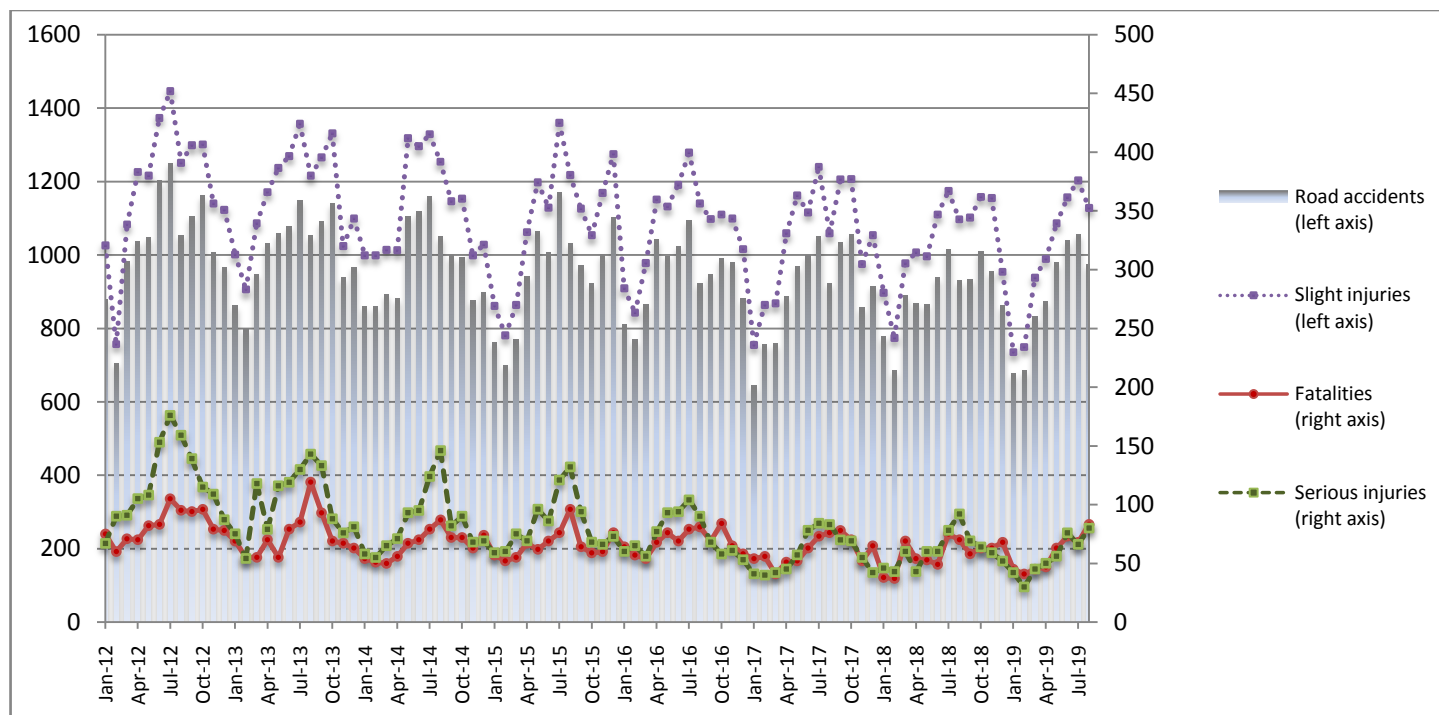
PRESS RELEASE

ROAD TRAFFIC ACCIDENTS: August 2019

The Hellenic Statistical Authority (ELSTAT) announces provisional¹ data on Road Traffic Accidents for August 2019. In particular, the road traffic accidents which occurred in Greece, resulting in death or injury, increased by 4.7% in comparison with the corresponding month of 2018 (975 road accidents in August 2019, against 931 road accidents in August 2018).

The casualties of the injury-causing accidents that occurred in August 2019 were as follows: 83 deaths, 80 serious injuries and 1,128 slight injuries. In contrast, in August 2018 the corresponding figures were: 70 deaths, 92 serious injuries and 1,097 slight injuries. Therefore, road accident casualties in August 2019 increased by 18.6% for deaths, decreased by 13.0% for serious injuries and increased by 2.8% for slight injuries.

**Graph 1: Road traffic accidents and casualties,
January 2012 - August 2019**



Provisional data for the period December 2018 - August 2019

Information on methodological issues:

Sectoral Statistics Division
Justice Statistics Section
Dimitra Athanasopoulou
Tel: +30 213 135 2135
Fax : +30 213 135 2764
e-mail: justistat@statistics.gr

Information for data provision:

Tel: 213 135 2022, 2308, 2310
e-mail: data.dissem@statistics.gr

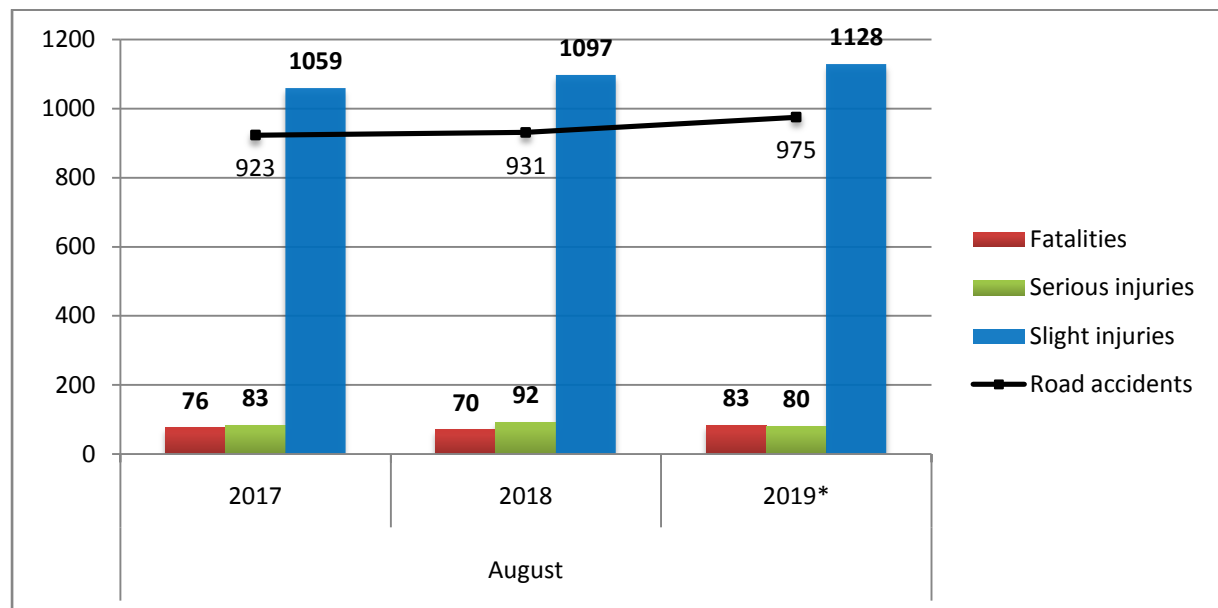
¹ Data for the reference year are provisional until the finalisation of the annual data, which become final 10 months after the end of the reference year. During these 10 months the provisional data are updated on the basis of the data of the Road Accident Forms which are transmitted to ELSTAT by Police Authorities.

Table 1: Road traffic accidents and casualties, August 2017 - 2019*

	August				
	2017	2018	2018/2017 (%)	2019*	2019*/2018 (%)
Road accidents	923	931	0.9	975	4.7
Fatalities	76	70	-7.9	83	18.6
Total injuries	1,142	1,189	4.1	1,208	1.6
Serious injuries	83	92	10.8	80	-13.0
Slight injuries	1,059	1,097	3.6	1,128	2.8

* Provisional data

Graph 2: Road traffic accidents and casualties, August 2017 - 2019*



* Provisional data

Table 2: Road traffic accidents and casualties, by region and department, August 2018 and 2019*

Region and department	Road accidents			Fatalities			Serious injuries			Slight injuries		
	2018	2019*	%	2018	2019*	%	2018	2019*	%	2018	2019*	%
Greece Total	931	975	4.7	70	83	18.6	92	80	-13.0	1,097	1,128	2.8
Anatoliki Makedonia and Thraki (East Macedonia and Thrace)	49	47	-4.1	2	9	350.0	12	6	-50.0	58	54	-6.9
Drama	8	9	12.5	0	1		2	1		10	11	
Evros	13	9	-30.8	1	2		1	0		16	9	
Kavala	16	15	-6.3	0	3		6	3		16	14	
Xanthi	6	10	66.7	0	1		1	0		7	17	
Rodopi	6	4	-33.3	1	2		2	2		9	3	
Kentriki Makedonia (Central Macedonia)	127	142	11.8	10	15	50.0	8	10	25.0	175	185	5.7
Imathia	6	3	-50.0	1	1		0	0		7	2	
Thessaloniki	84	92	9.5	3	9		1	3		119	112	
Kilkis	4	9	125.0	0	1		2	1		3	14	
Pella	1	9	800.0	0	1		0	2		1	10	
Pieria	3	5	66.7	1	1		1	1		3	4	
Serres	7	6	-14.3	3	1		1	1		16	10	
Chalkidiki	22	18	-18.2	2	1		3	2		26	33	
Dytiki Makedonia (West Macedonia)	5	8	60.0	0	1	-	0	0	-	7	8	14.3
Grevena	0	1	-	0	0		0	0		0	2	
Kastoria	0	1	-	0	0		0	0		0	1	
Kozani	5	3	-40.0	0	0		0	0		7	3	
Florina	0	3	-	0	1		0	0		0	2	
Ipeiros (Epirus)	24	11	-54.2	2	1	-50.0	3	1	-66.7	32	19	-40.6
Arta	0	1	-	0	0		0	0		0	1	
Thesprotia	9	2	-77.8	0	0		1	0		17	3	
Ioannina	9	7	-22.2	0	1		2	1		11	13	
Preveza	6	1	-83.3	2	0		0	0		4	2	
Thessalia (Thessaly)	21	40	90.5	4	6	50.0	3	4	33.3	28	45	60.7
Karditsa	6	10	66.7	1	1		1	0		11	14	
Larissa	7	11	57.1	2	3		1	2		7	7	
Magnissia	2	10	400.0	0	1		0	2		5	10	
Trikala	6	9	50.0	1	1		1	0		5	14	
Ionian Nisia (Ionian Islands)	24	32	33.3	0	1	-	8	4	-50.0	23	35	52.2
Zakynthos	4	6	50.0	0	0		1	1		3	10	
Kerkyra	8	13	62.5	0	1		4	2		9	12	
Kefallinia	2	6	200.0	0	0		0	1		2	5	
Lefkada	10	7	-30.0	0	0		3	0		9	8	

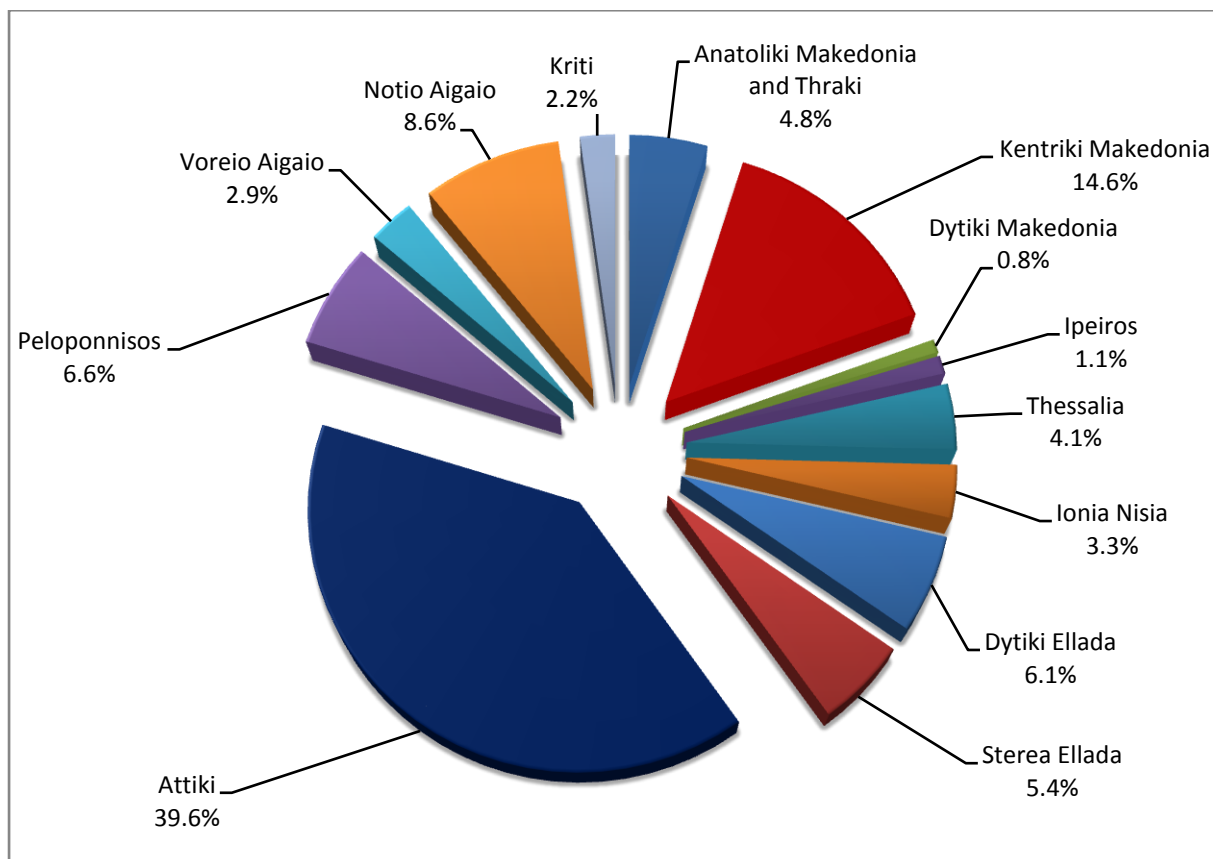
* Provisional data

Table 2: Road traffic accidents and casualties, by region and department, August 2018 and 2019* (Continued)

Region and department	Road accidents			Fatalities			Serious injuries			Slight injuries		
	2018	2019*	%	2018	2019*	%	2018	2019*	%	2018	2019*	%
Dytiki Ellada (West Greece)	69	59	-14.5	13	9	-30.8	8	5	-37.5	74	61	-17.6
Etolia & Akarnania	26	22	-15.4	5	1		5	2		30	24	
Achaia	34	26	-23.5	5	6		3	2		37	27	
Ilia	9	11	22.2	3	2		0	1		7	10	
Stereia Ellada	42	53	26.2	3	3	0.0	5	11	120.0	60	58	-3.3
Viotia	3	7	133.3	0	1		0	2		4	4	
Evia	20	33	65.0	2	1		2	7		25	42	
Evrytania	1	1	0.0	0	0		1	0		2	2	
Fthiotida	15	10	-33.3	1	1		2	2		25	8	
Fokida	3	2	-33.3	0	0		0	0		4	2	
Attiki (Attica)	365	386	5.8	19	20	5.3	12	16	33.3	414	437	5.6
Peloponnisos (Peloponnese)	77	64	-16.9	5	4	-20.0	8	5	-37.5	94	85	-9.6
Argolida	12	9	-25.0	0	1		0	1		14	9	
Arkadia	8	16	100.0	0	0		0	1		14	20	
Korinthia	24	30	25.0	0	1		5	2		27	43	
Lakonia	11	1	-90.9	2	1		1	0		11	1	
Messinia	22	8	-63.6	3	1		2	1		28	12	
Voreio Aigaio (North Aegean)	31	28	-9.7	2	0	-100.0	5	2	-60.0	35	33	-5.7
Lesvos	12	18	50.0	2	0		1	1		13	21	
Samos	14	9	-35.7	0	0		0	0		21	12	
Chios	5	1	-80.0	0	0		4	1		1	0	
Notio Aigaio (South Aegean)	70	84	20.0	4	9	125.0	12	12	0.0	77	91	18.2
Dodekanissos	28	36	28.6	3	6		4	3		25	34	
Kyklades	42	48	14.3	1	3		8	9		52	57	
Kriti (Crete)	27	21	-22.2	6	5	-16.7	8	4	-50.0	20	17	-15.0
Iraklio	15	17	13.3	2	4		4	4		11	12	
Lassithi	1	2	100.0	0	0		0	0		1	2	
Rethymno	4	0	-100.0	3	0		0	0		1	0	
Chania	7	2	-71.4	1	1		4	0		7	3	

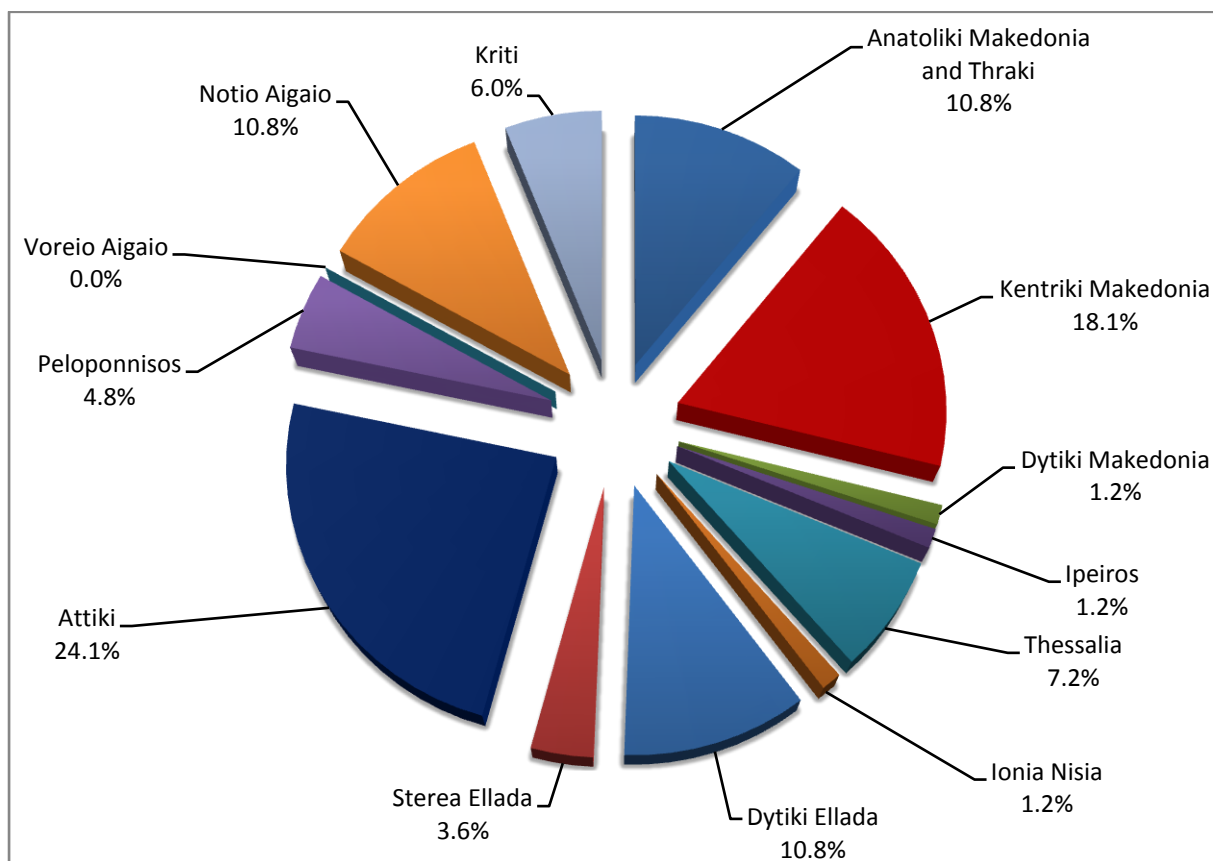
* Provisional data

**Graph 3: Road traffic accidents by region,
August 2019 ***



* Provisional data

**Graph 4: Fatalities by region,
August 2019 ***



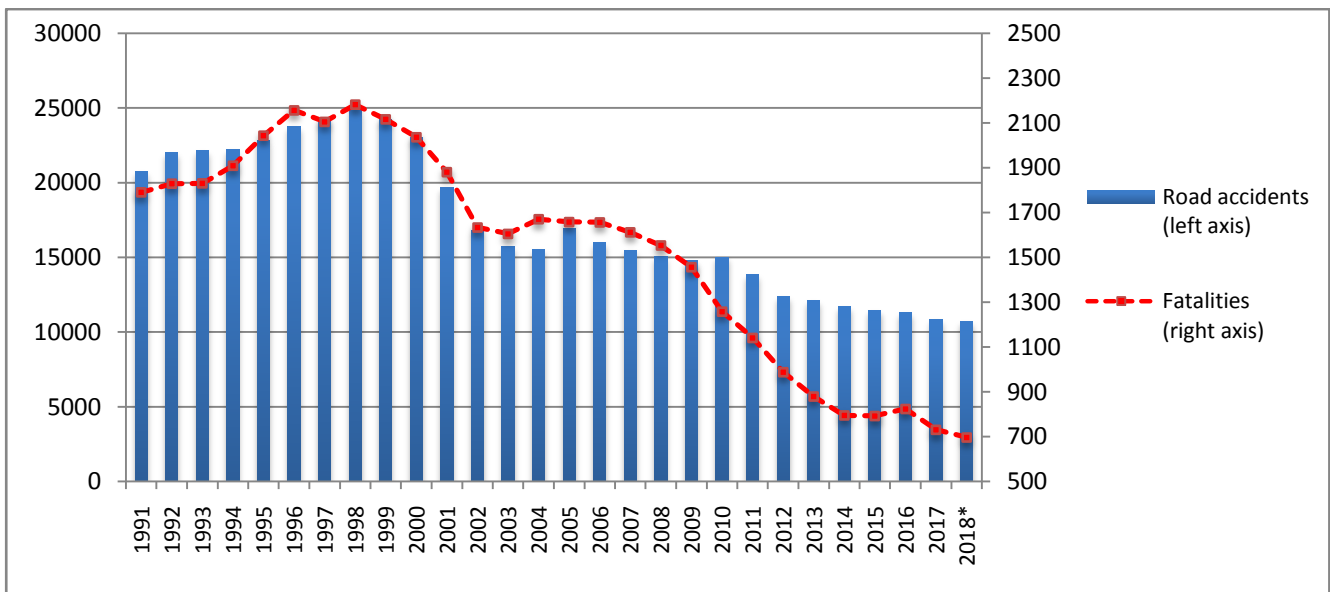
* Provisional data

Table 3: Road traffic accidents and casualties, January - August 2017 - 2019*

	2017		2018		2019 *
	January - August	Total year	January - August	Total year*	January - August
Road accidents	6,986	10,848	6,973	10,734	7,114
<i>Annual change (%)</i>			-0.2	-1.1	2.0
Fatalities	466	731	445	697	465
<i>Annual change (%)</i>			-4.5	-4.7	4.5
Serious injuries	470	706	482	726	445
<i>Annual change (%)</i>			2.6	2.8	-7.7
Slight injuries	8,123	12,565	8,032	12,401	7,985
<i>Annual change (%)</i>			-1.1	-1.3	-0.6

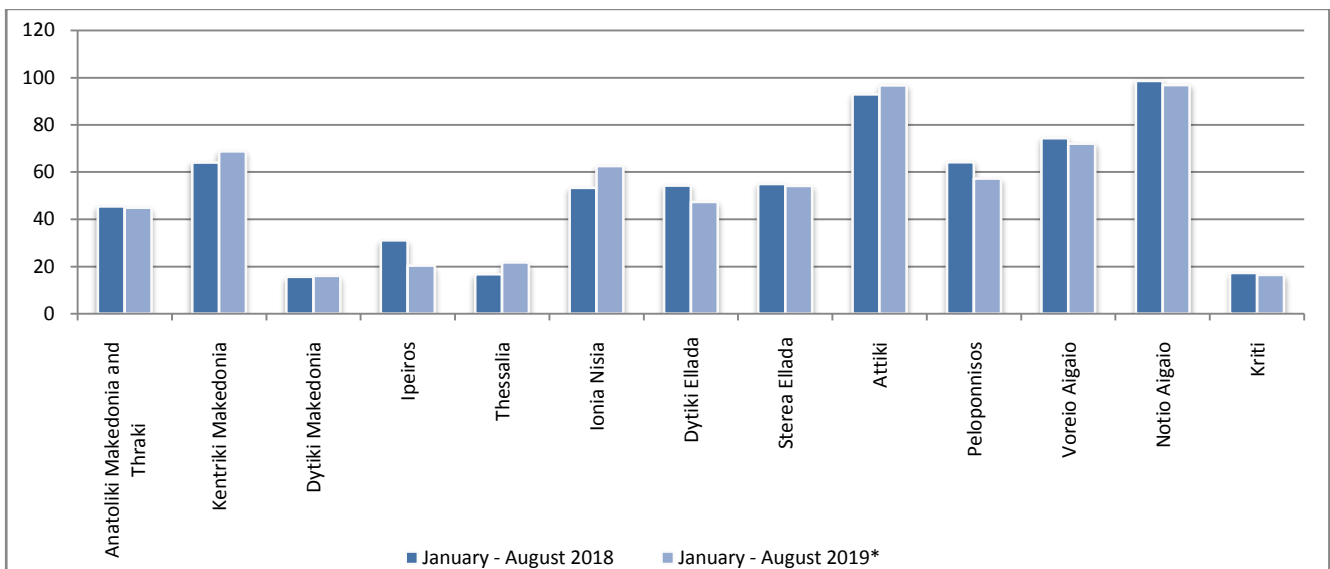
* Provisional data

Graph 5: Total road traffic accidents and fatalities, 1991-2018*



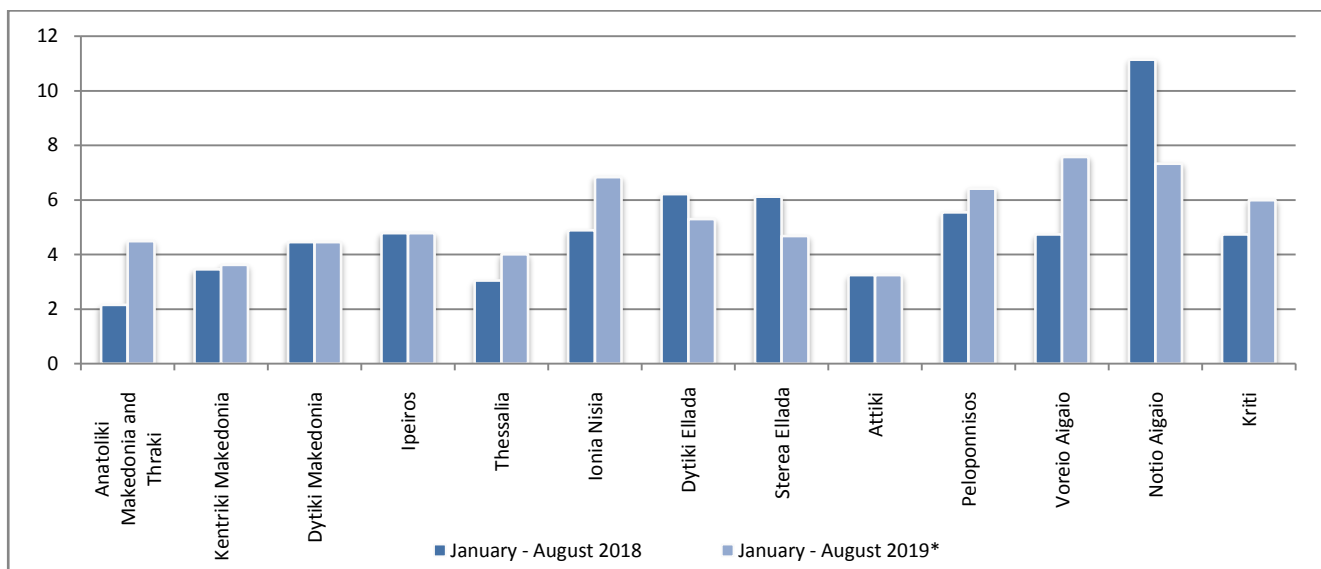
* Provisional data for December 2018

Graph 6: Road traffic accidents per 100,000 inhabitants

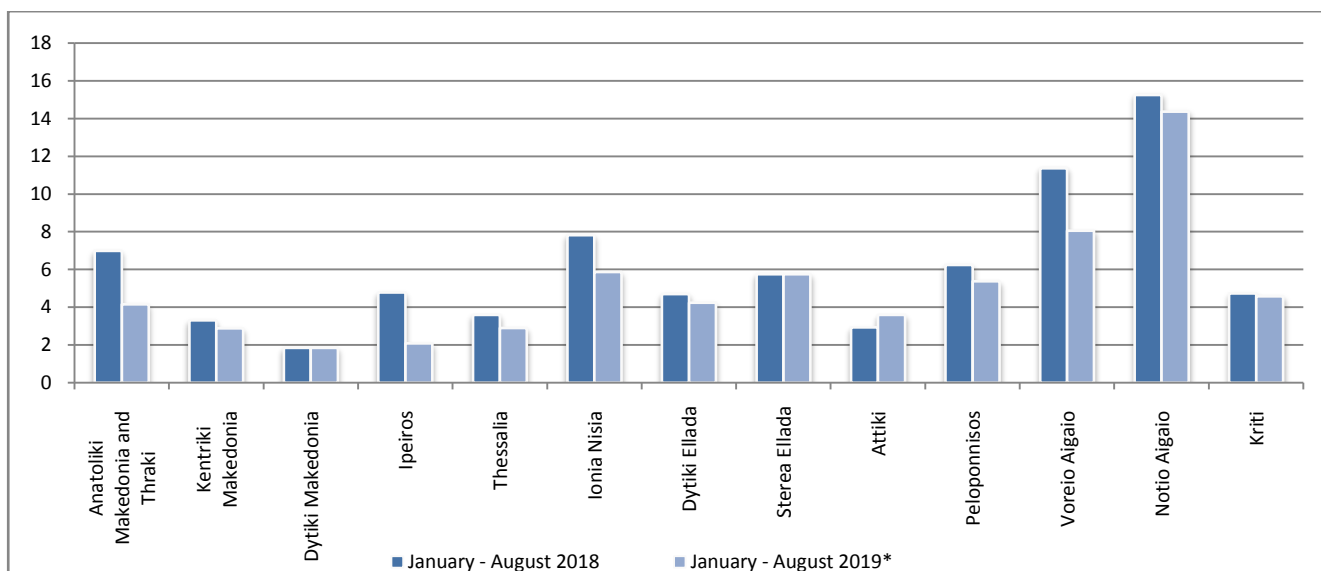


* Provisional data

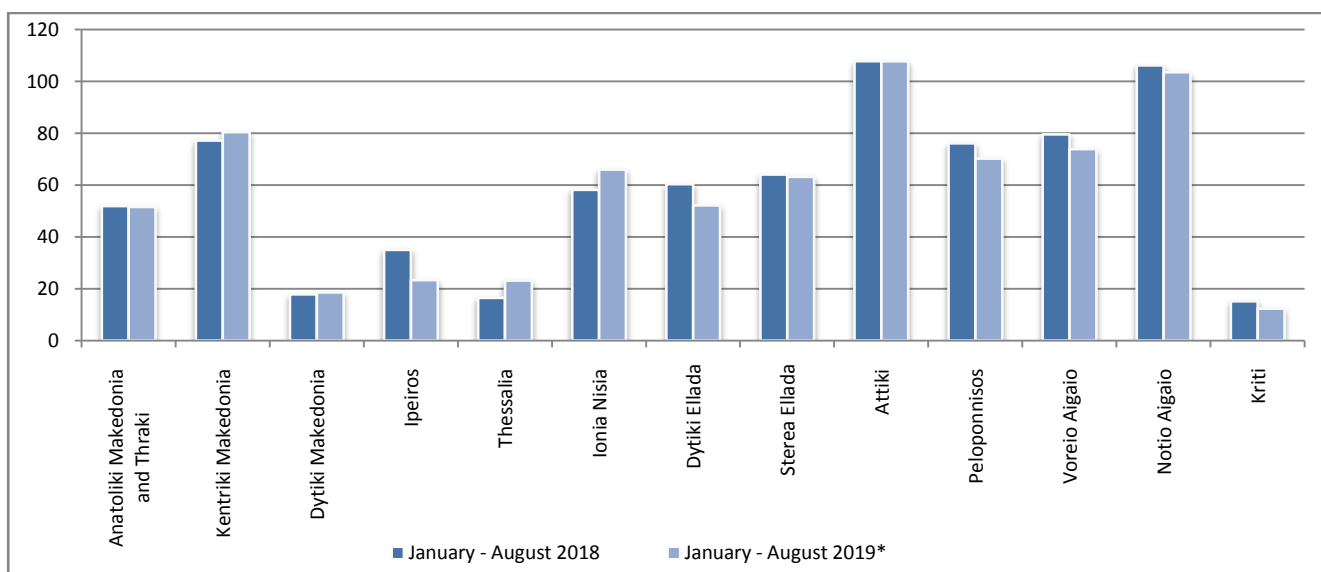
Graph 7: Fatalities per 100,000 inhabitants



Graph 8: Serious injuries per 100,000 inhabitants



Graph 9: Slight injuries per 100,000 inhabitants



* Provisional data

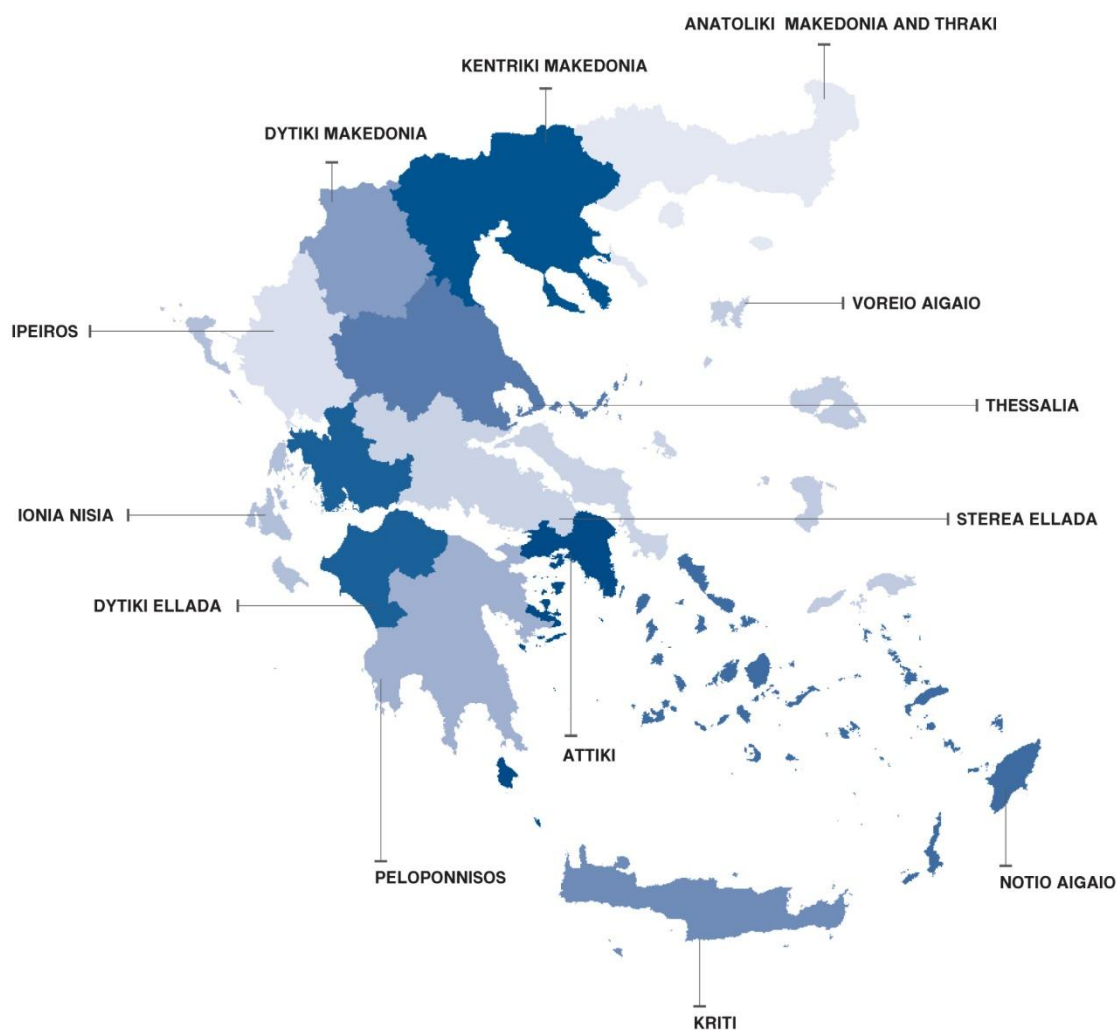
EXPLANATORY NOTES

Survey on Road Traffic Accidents

The Survey on Road Traffic Accidents is conducted on a monthly basis and it records, for each region (see map) and department of Greece and for each month separately, the number of accidents resulting in death or injury, as well as the number of persons injured by categories (drivers, passengers, pedestrians).

On a yearly basis road traffic accidents are further analyzed. The competent agencies for filling in/collecting the forms on road accidents are the local Police Authorities and the local Port Authorities of Greece.

The lower level of analysis for the place where an injury road accident occurred is the Municipal – Local Commune, which is described by a 8-digit geographic code. Data are collected on a monthly basis. The main variables are the following: place of accident, kind of road, casualties, conditions of road surface and type of road.



Legal basis

The Survey on Road Traffic Accidents is governed by Council Decision 93/704 of the European Community.

Reference period

Monthly.

Availability of data

Provisional data are available 2 months after the reference month.
Final data are available 10 months after the reference year.

National definitions **Road accident** (injury accident): Any accident involving at least one road motor vehicle in motion on a public road or square to which the public has access (excluding yards, industrial sites or vehicle depot of public transport enterprises), resulting in at least one injured or killed person. Accidents with only material damages are not included.

Fatality (Death): Any person killed immediately or dying within 30 days as a result of an injury accident (This national definition applies since 01.01.1996)

Person injured: Any person who sustained an injury as result of an injury accident, and who normally needs medical treatment.

Serious injury: Any person who sustained an injury as result of an injury accident, such as brain damages, mutilation, multiple injuries, which may result in lack of awareness or which are life-threatening.

Slight injury: Any person injured who sustained minor and not life-threatening injuries.

Vehicle: Include motor vehicles, trolleybuses, motorcycles, bicycles, motorbikes, agricultural and road making machines, animal and hand-drawn vehicles. Railway vehicles are excluded, unless the road accident involves at least one of the aforementioned types of vehicles and therefore, railway vehicles are considered vehicles.

Methodology The forms of the survey are filled in by the local Police Authorities and the local Port Authorities as well.

References More information about Road Traffic Accidents is available on ELSTAT's website and more specifically at the link: www.statistics.gr > Population, Social Conditions > Accidents > Road Traffic Accidents.
It should be noted that previous press releases and time series are available on ELSTAT's website: www.statistics.gr