



PRESS RELEASE

QUARTERLY NON-FINANCIAL SECTOR ACCOUNTS: 2nd Quarter 2017(Provisional data)

The Hellenic Statistical Authority (ELSTAT) announces the provisional data for the quarterly non-financial sector accounts for the 2nd quarter of 2017. Quarterly non-financial sector accounts provide an overall description of the Greek economy, based on the analysis of the economic behavior of the institutional sectors constituting the economy (households and non-profit institutions serving households, non-financial corporations, financial corporations, general government) and the relations of the national economy with the rest of world.

The data which are presented in the present Press Release have been compiled according to the new European System of National and Regional Accounts (ESA2010 – Regulation (EU) 549/2013).

The data cover the period 1999Q1-2017Q2.

During the second quarter of 2017, the external balance of goods and services recorded a deficit of 0.2 billion euro compared with a deficit of 0.8 billion euro recorded at the second quarter of 2016.

On account of the deficit decrease in the external balance of goods and services and the decrease of the net incomes and (current and capital) transfers received from the rest of the world, the total economy (S.1) presented net borrowing of 0.3 billion euro to the rest of the world (S.2), compared with the second quarter of 2016 when net borrowing was 0.4 billion euro (Table 1, Graph 1).

Table 1*

(in billion €)

	Total Economy (S.1)	2017 Q2	2016 Q2	Difference
(1)	Imports of goods and services	15.0	13.9	1.1
(2)	Exports of goods and services	14.7	13.1	1.6
(3)=(2)-(1)	External balance of goods and services	-0.2	-0.8	0.5
(4)	External balance of primary incomes, current and capital transfers	-0.1	0.4	-0.5
(5)=(3)+(4)	Net Lending(+) /net borrowing(-)	-0.3	-0.4	0.0
	Rest of the World (S.2)			
(6)=- (5)	Net Lending(+) /net borrowing(-)	0.3	0.4	0.0

*Small deviations in sums are due to rounding

Information

National Accounts Division

Quarterly, Regional & Satellite Accounts Section

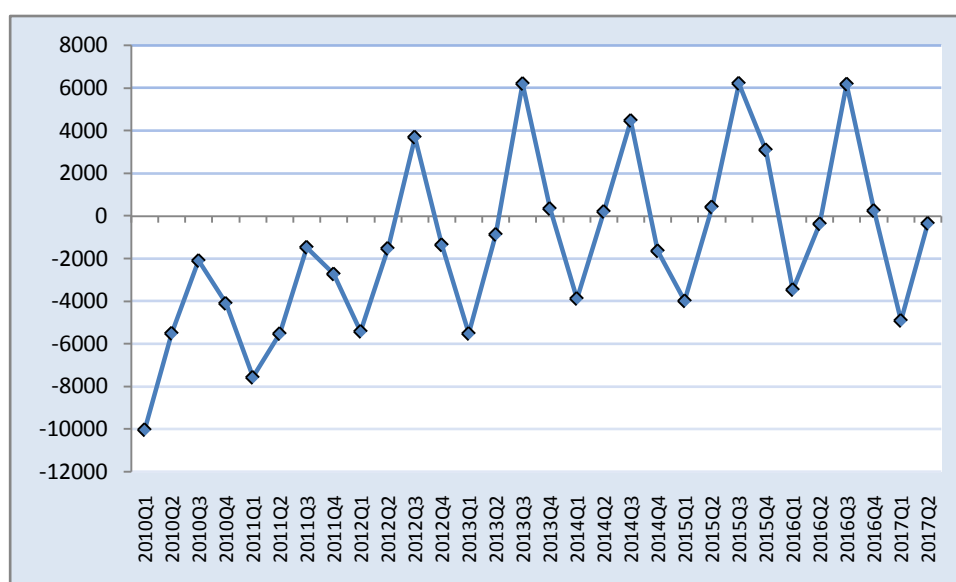
Andriana Dafni, Panagiotis Loutas

Tel: +30 213 135 2084, 213 135 6071

Fax: +30 213 135 2552

Email: a.dafni@statistics.gr, p.loutas@statistics.gr

Graph 1. Net lending (+) / net borrowing (-) Total Economy



During the second quarter of 2017, disposable income of the households and non-profit institutions serving households (NPISH) sector (S.1M) increased by 0.2% in comparison with the same quarter of the previous year, from 29.2 billion euro to 29.3 billion euro.

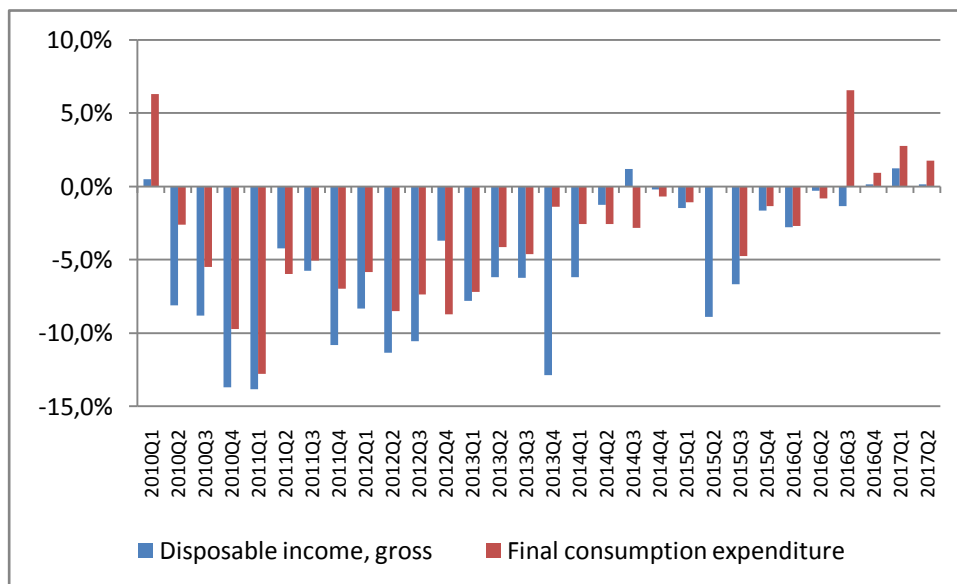
Table 2 presents the absolute values and the annual changes for the transactions of the secondary distribution of income account for households and non-profit institutions serving households (NPISH) sector for the second quarter of the years 2016 and 2017, which affect the gross disposable income.

Table 2
Secondary distribution of income account (in million €)

<i>Transactions and balancing items</i>		<i>Uses</i>		<i>y-o-y % 2017-2016</i>	<i>Resources</i>		<i>y-o-y % 2017-2016</i>
		2017Q2	2016Q2		2017Q2	2016Q2	
B.5g	Balance of primary incomes. gross				30513	30090	1.4%
D.5	Current taxes on income, wealth, etc.	3053	3197	-4.5%			
D.6	Social contributions	6818	6359	7.2%	8485	8754	-3.1%
D.7	Other current transfers	440	369	19.4%	593	316	87.7%
B.6g	Disposable income, gross	29279	29235	0.2%			

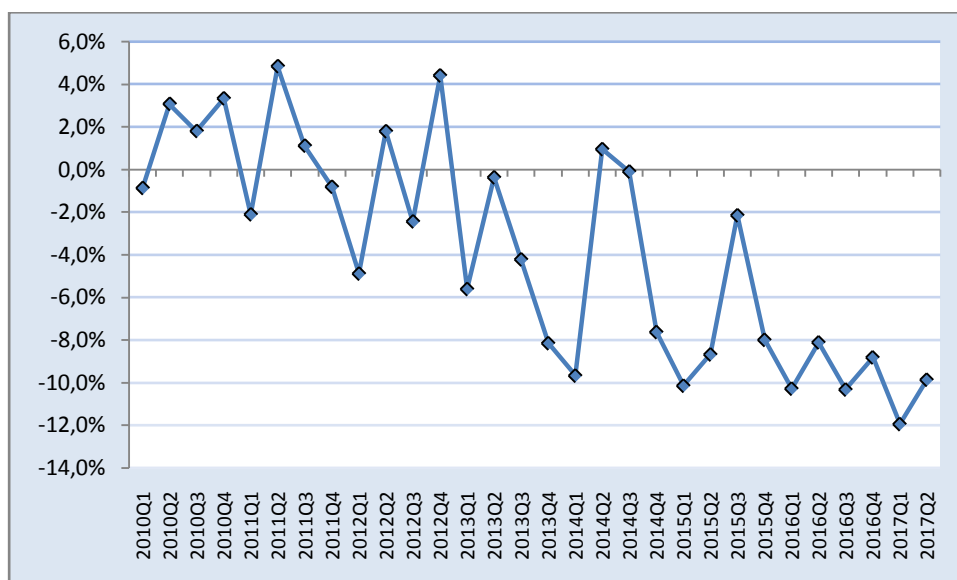
Final consumption expenditure of the households and non-profit institutions serving households (NPISH) sector increased by 1.8% in comparison with the same quarter of the previous year, from 31.6 billion euro to 32.2 billion euro (Graph 2).

Graph2. Households and NPISH gross disposable income and final consumption expenditure growth
(change compared with the same quarter of the previous year)



The saving rate of the households and NPISH sector, defined as gross savings divided by gross disposable income, was -9.9% in the second quarter of 2017 compared with -8.1% in the second quarter of 2016 (Graph 3).

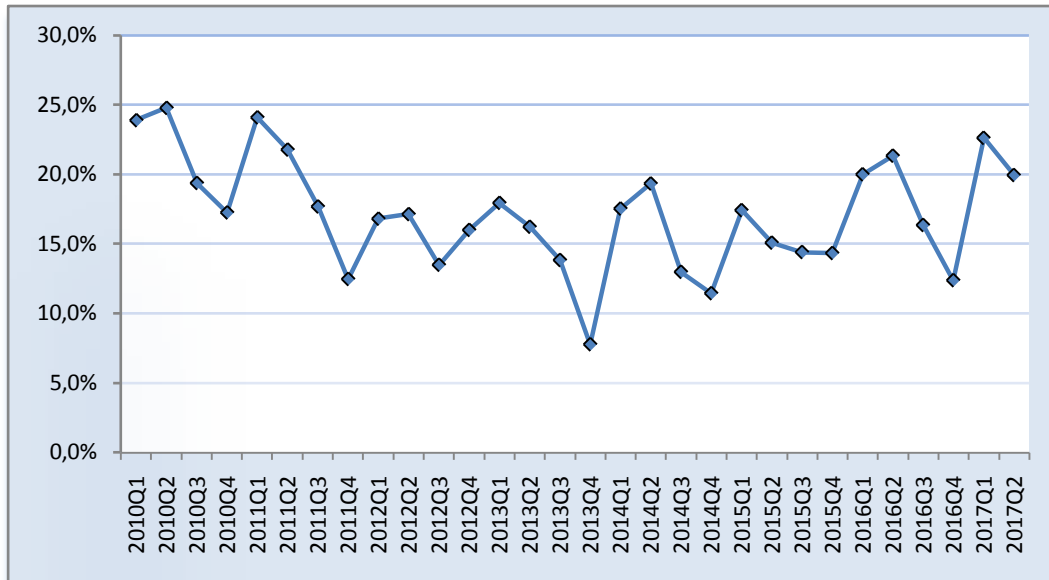
Graph 3. Saving rate of households and NPISH



During the second quarter of 2017, the gross fixed capital formation of the non-financial corporation's sector (S.11) decreased by 5.6% in comparison with the same quarter of the previous year, from 2.9 billion euro to 2.8 billion euro.

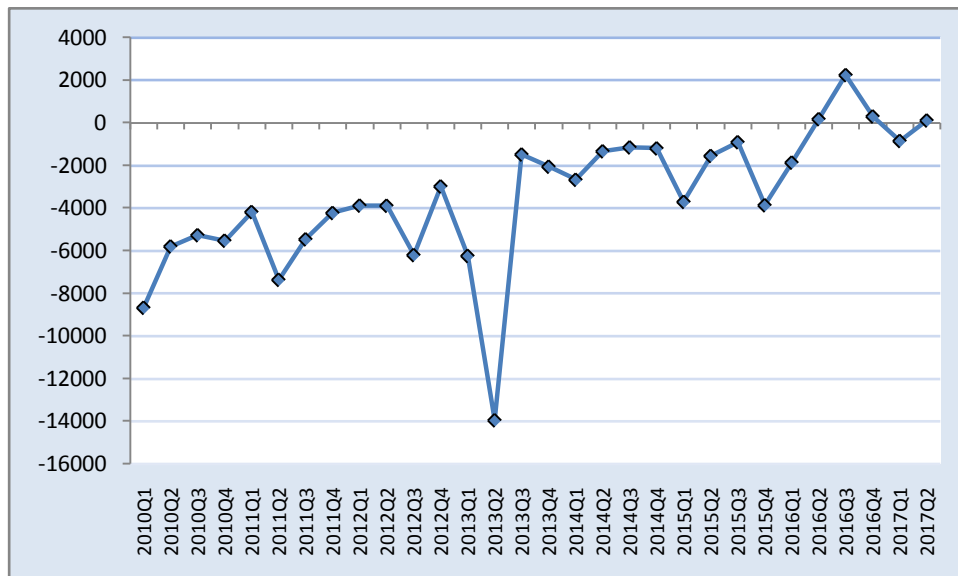
The gross investment rate of the sector, defined as gross fixed capital formation divided by gross value added, was 20.0% compared with 21.4% in the second quarter of 2016 (Graph 4).

Graph 4. Gross investment rate of Non-financial corporations



Net lending of general government (S.13) during the second quarter of 2017 amounted to 0.1 billion euro compared with 0.2 billion euro of net lending in the second quarter of 2016 (Graph 5).

Graph 5. Net lending (+)/ net borrowing (-) of General Government



EXPLANATORY NOTES

General: The Quarterly non-financial Sector Accounts (QSA) provide a description of the different stages of the economic process: production, generation of income, distribution of income, redistribution of income, use of income and non-financial accumulation. They also provide a list of balancing items that have high analytical value in their own right: value added, operating surplus and mixed income, balance of primary incomes, disposable income, saving, net lending / net borrowing.

Legal basis: The QSA are compiled in accordance with the European System of Accounts -[ESA 2010](#) of the Council Regulation (EU) No 549/2013 of the European Parliament and of the Council of 21 May 2013.

Reference period: The accounting period is the quarter.

Geographical coverage: The whole Greek territory.

Unit of measure: The economic data are published in million euro.

Revision: The Quarterly non-financial Sector Accounts are revised following the revisions of annual non-financial sector accounts, quarterly national accounts and quarterly non-financial accounts of General Government, in order to ensure coherence between them.

Statistical classification: The standard followed is the European System of Accounts (ESA 2010). The main categories are the institutional sectors and the transactions recorded between the sectors. The institutional sectors combine institutional units with similar characteristics and behaviour, and are classified as follows:

Total Economy (S.1)

Non-financial corporations (S.11)

Financial corporations (S.12)

General government (S.13)

Households and non-profit institutions serving households (NPISH) (S.1M)

Rest of the World (S.2)

Publication of data: The QSA data are published at about 120 days after the end of the reference quarter.

References: More information on the methodology and detailed tables are available on the ELSTAT website:

<http://www.statistics.gr/en/statistics/-/publication/SEL91/->