



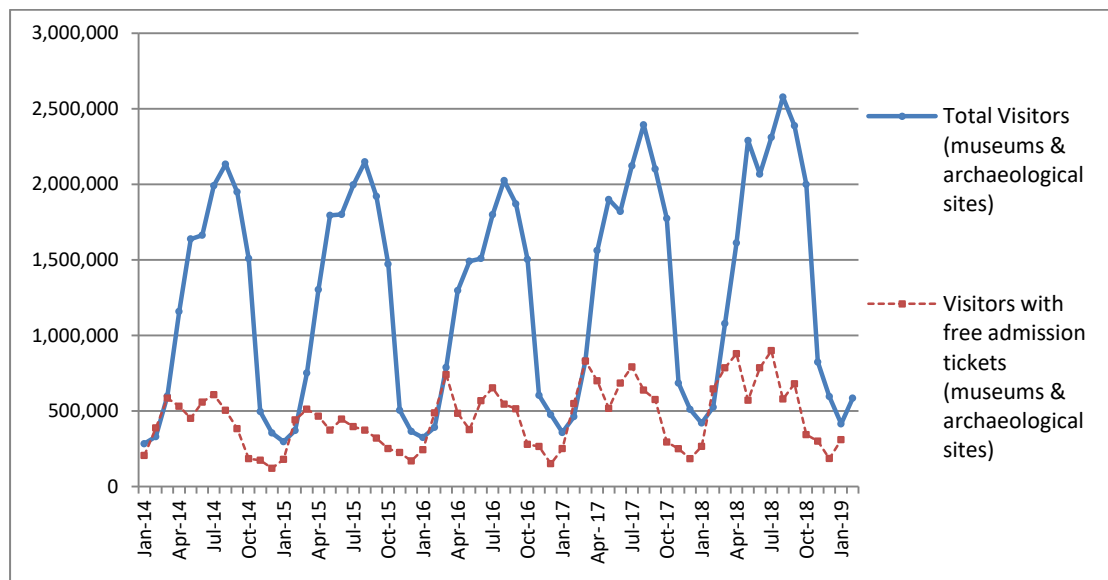
PRESS RELEASE

SURVEY ON MUSEUMS AND ARCHAEOLOGICAL SITES ATTENDANCE FEBRUARY 2019

The Hellenic Statistical Authority (ELSTAT) announces the results of the *Survey on Museums and Archaeological Sites Attendance* for February 2019, More specifically:

- In February 2019 compared with the corresponding month of 2018, Museums experienced a 15.0% increase in the number of visitors and a 12.3% increase in the number of free admission visitors as well as a 20.2% increase in their receipts (Table 1),
- In February 2019 compared with the corresponding month of 2018, the number of visitors at Archaeological sites recorded an increase of 8.8%, while an increase of 20.5% was observed in the number of free admission visitors and a 7.2% increase in the corresponding receipts (Table 1),
- During the two-month period from January to February 2019, an increase of 9.2% was observed in the number of visitors of Museums, while an increase of 8.5% was recorded in the number of free admission visitors and a 17.1% increase in the relevant receipts, in comparison with the corresponding period of 2018 (Table 2),
- As regards Archaeological sites, during the two-month period from January to February 2019, an increase of 3.3% was recorded in the number of visitors, while an 11.5% increase was observed in the number of free admission visitors and a 3.8% increase in the relevant receipts, in comparison with the corresponding period of 2018 (Table 2).

Graph 1: Visitors of Museums and Archaeological sites (Jan 2014 – Feb 2019)



Information:

Social Statistics Division

Section of Culture and Sports statistics,

Argyro Pateraki (Tel: +30 213 1352129, e-mail: ar.pateraki@statistics.gr)

**TABLE 1: VISITORS OF MUSEUMS AND ARCHAEOLOGICAL SITES - TOTAL RECEIPTS
(FEBRUARY 2018 & FEBRUARY 2019)**

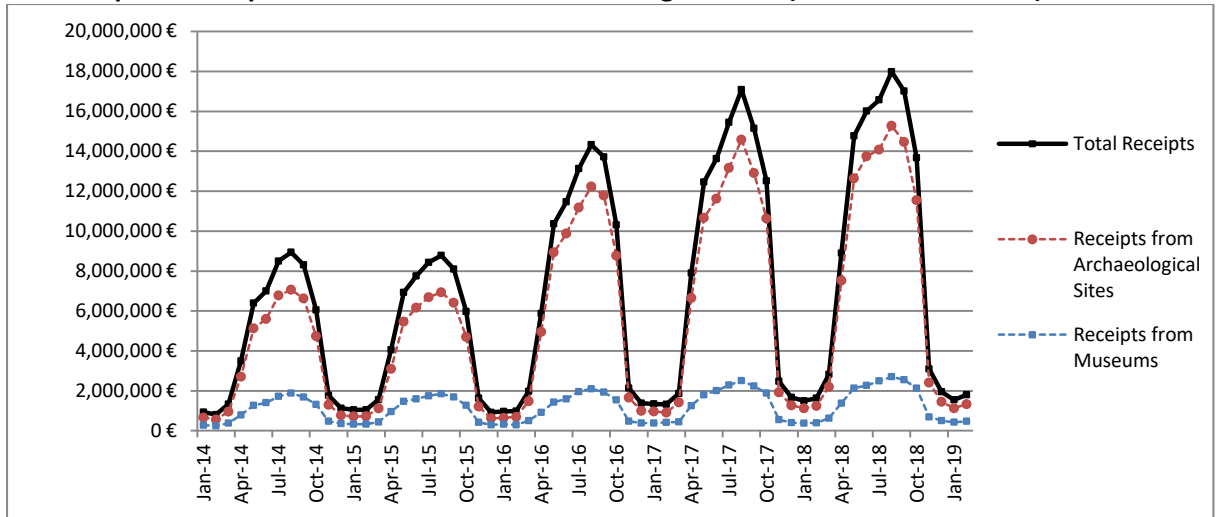
I. VISITORS			
Museums and Archaeological sites	2018	2019	Change 2019/2018
Total number of visitors (A+B)	525,274	585,251	11.4%
A. Museums (C+E)	222,269	255,519	15.0%
Acropolis Museum	72,650	90,731	24.9%
National Archaeological	27,740	36,729	32.4%
Ancient Olympia	4,789	4,100	-14.4%
Palace of the Grand Master (Rhodes)	1,331	1,085	-18.5%
Herakleion Archaeological (Crete)	10,268	7,555	-26.4%
White Tower	12,522	14,172	13.2%
Delphi	8,625	9,585	11.1%
Other museums	84,344	91,562	8.6%
B. Archaeological Sites (D+F)	303,005	329,732	8.8%
Epidavros ⁽¹⁾	11,413	11,880	4.1%
The Acropolis of Mycenae & Atreus' Treasure	10,783	12,130	12.5%
The Acropolis of Athens	105,804	127,196	20.2%
Sounio	12,382	12,121	-2.1%
The Acropolis of Lindos ⁽²⁾	413	343	-16.9%
Royal Tombs of Vergina	8,593	9,247	7.6%
Ancient Olympia	7,693	7,342	-4.6%
Knossos (Crete)	9,702	6,899	-28.9%
Phaistos (Crete)	7,053	3,949	-44.0%
Ancient Korinthos ⁽¹⁾	4,461	5,566	24.8%
Mystras ⁽¹⁾	2,269	1,784	-21.4%
Delphi	12,461	12,792	2.7%
Other archaeological sites	109,978	118,483	7.7%
II. VISITORS WHO PAID TICKET			
	2018	2019	Change 2019/2018
Total number of visitors who paid ticket (C+D)	259,111	274,923	6.1%
C. Museums	95,324	112,961	18.5%
D. Archaeological sites	163,787	161,962	-1.1%
III. VISITORS WITH FREE ADMISSION TICKETS			
	2018	2019	Change 2019/2018
Total number of visitors with free admission ticket (E+F)	266,163	310,328	16.6%
E. Museums	126,945	142,558	12.3%
F. Archaeological sites	139,218	167,770	20.5%
IV. RECEIPTS (euros)			
	2018	2019	Change 2019/2018
Total Receipts (G+H)	1,632,396	1,801,185	10.3%
G. Museums	392,847	472,397	20.2%
H. Archaeological sites	1,239,549	1,328,788	7.2%

⁽¹⁾ Flat rate ticket, valid both for the museum and the archaeological site.

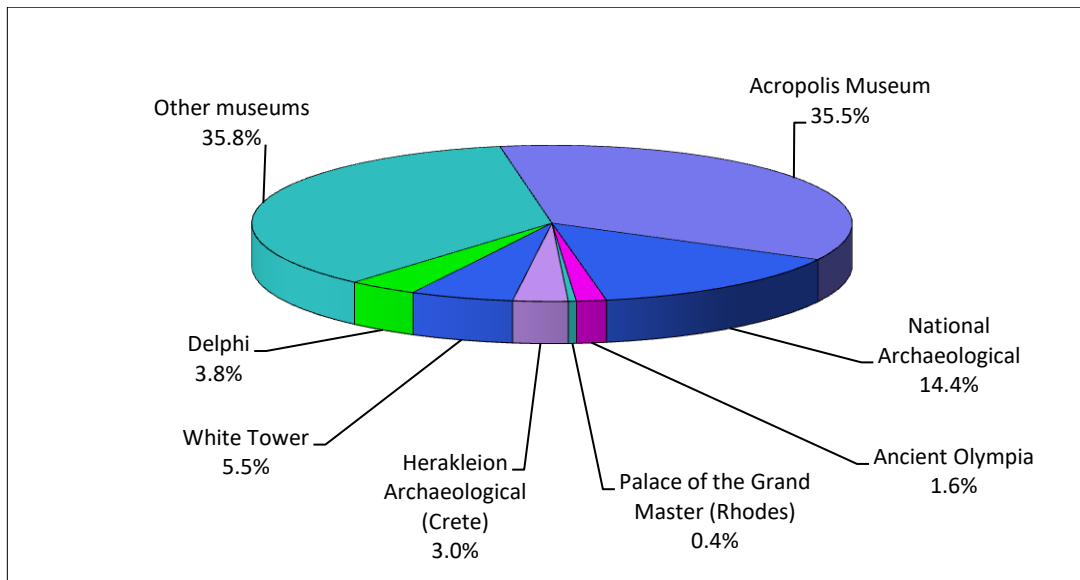
⁽²⁾ The data referring to the number of tickets for the archaeological sites of the Acropolis of Lindos for February 2019 are provisional and are based on estimation.

The following graphs depict the evolution of the receipts (Graph 2), as well as the number of visitors by Museum and Archaeological Site (Graphs 3 and 4, respectively),

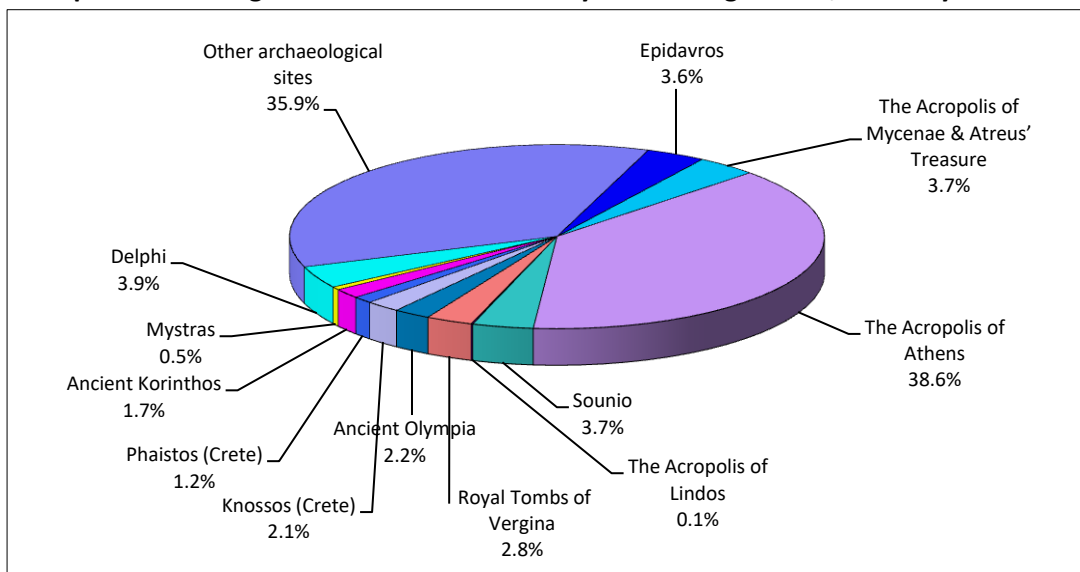
Graph 2: Receipts from Museums and Archaeological Sites (Jan 2014 - Feb 2019)



Graph 3: Percentage distribution of Visitors by Museum, February 2019



Graph 4: Percentage distribution of Visitors by Archaeological site, February 2019



**TABLE 2: VISITORS OF MUSEUMS AND ARCHAEOLOGICAL SITES - TOTAL RECEIPTS
(2017, 2018 AND JANUARY-FEBRUARY 2018 & 2019)**

I. VISITORS					
Museums and Archaeological sites	2017	2018	JANUARY-FEBRUARY		change
			2018	2019	2019/2018
Total number of visitors (A+B)	16,524,557	18,603,282	946,297	1,000,591	5.7%
A. Museums (C+E)	5,191,781	5,702,211	397,776	434,206	9.2%
Acropolis Museum	1,593,362	1,774,304	134,147	160,350	19.5%
National Archaeological	545,555	594,219	52,586	66,279	26.0%
Ancient Olympia	145,118	156,658	6,761	6,038	-10.7%
Palace of the Grand Master (Rhodes)	235,413	242,759	2,524	2,078	-17.7%
Herakleion Archaeological (Crete)	426,191	555,031	15,501	10,969	-29.2%
White Tower	268,149	225,944	23,727	21,737	-8.4%
Delphi	211,827	249,754	15,130	16,496	9.0%
Other museums	1,766,166	1,903,542	147,400	150,259	1.9%
B. Archaeological Sites (D+F)	11,332,776	12,901,071	548,521	566,385	3.3%
Epidavros ⁽¹⁾	469,060	548,900	19,015	19,250	1.2%
The Acropolis of Mycenae & Atreus' Treasure	412,397	495,993	19,135	20,200	5.6%
The Acropolis of Athens ⁽²⁾	2,766,218	3,150,604	198,316	220,133	11.0%
Sounio	259,709	306,665	22,811	22,555	-1.1%
The Acropolis of Lindos ⁽³⁾	441,012	489,137	792	658	-16.9%
Royal Tombs of Vergina	203,632	222,503	13,956	12,854	-7.9%
Ancient Olympia	481,252	484,238	13,234	11,841	-10.5%
Knossos (Crete)	634,710	855,663	14,730	10,065	-31.7%
Phaistos (Crete)	95,182	134,538	11,167	5,422	-51.4%
Ancient Korinthos ⁽¹⁾	191,836	196,944	9,141	10,447	14.3%
Mystras ⁽¹⁾	125,549	145,939	4,063	3,438	-15.4%
Delphi	345,804	405,947	23,078	20,687	-10.4%
Other archaeological sites	4,906,415	5,464,000	199,083	208,835	4.9%
II. VISITORS WHO PAID TICKET					
	2017	2018	JANUARY-FEBRUARY		change
			2018	2019	2019/2018
Total number of visitors who paid ticket (C+D)	10,288,448	11,576,110	495,428	504,225	1.8%
C. Museums	2,831,466	3,155,269	184,380	202,708	9.9%
D. Archaeological sites	7,456,982	8,420,841	311,048	301,517	-3.1%
III. VISITORS WITH FREE ADMISSION TICKETS					
	2017	2018	JANUARY-FEBRUARY		change
			2018	2019	2019/2018
Total number of visitors with free admission ticket (E+F)	6,236,109	7,027,172	450,869	496,366	10.1%
E. Museums	2,360,315	2,546,942	213,396	231,498	8.5%
F. Archaeological sites	3,875,794	4,480,230	237,473	264,868	11.5%
IV. RECEIPTS (euros)					
	2017	2018	JANUARY-FEBRUARY		change
			2018	2019	2019/2018
Total Receipts (G+H)	102,887,879	115,772,341	3,131,128	3,351,708	7.0%
G. Museums	16,175,121	18,251,493	769,251	900,626	17.1%
H. Archaeological sites	86,712,758	97,520,848	2,361,877	2,451,082	3.8%

⁽¹⁾ Flat rate ticket, valid both for the museum and the archaeological site.

⁽²⁾ From May 2017 onwards, the data for the number of tickets in the archaeological site of the Acropolis of Athens include the tickets of the Ancient Theatre of Dionysos.

⁽³⁾ The data referring to the number of tickets for the archaeological sites of the Acropolis of Lindos from November 2018 are provisional and are based on estimation.

EXPLANATORY NOTES

Survey on Museums and Archaeological Sites Attendance	<p>The Survey on Museums and Archaeological Sites Attendance has been producing results since 1970, The survey collects data from the Archaeological Receipts Fund (ARF) of the Ministry of Culture and Sports concerning the number of visitors and the receipts from the tickets sold in the Museums and Archaeological sites of the country.</p> <p>The corresponding data for the Acropolis Museum are available from December 2009 onwards.</p>
Legal Framework	<p>The survey is conducted since 1970 on a regular basis and it produces results on a monthly and yearly basis, in compliance with the Joint Ministerial Decision 15189/B379/73.</p>
Reference Period	<p>01/02/2019 to 28/02/2019.</p>
Methodology and Definitions	<p>The Survey is conducted on a monthly basis from data collected from the Archaeological Receipts Fund (ARF) of the Ministry of Culture and Sports concerning on the number of visitors and the receipts from the tickets sold in the Museums and Archaeological sites of the country, ELSTAT tabulates the data on Museums and the Archaeological sites for the whole of the Country, by month and by year.</p> <p>Number of flat rate tickets</p> <p>From April 1999 onwards, in some museums and the nearby archaeological sites, in addition to the ordinary ticket, a new “flat rate ticket” was established, which is valid for both the museum and the nearby archaeological site, The total number of these flat rate tickets for February 2019 was 13,156.</p>
References	<p>More information on the Survey on Museums and Archaeological Sites Attendance and detailed time series are available on: http://www.statistics.gr/en/statistics/-/publication/SCI21/</p>