



PRESS RELEASE

INDUSTRIAL PRODUCTION INDEX: November 2018, y-o-y increase of 3.1%

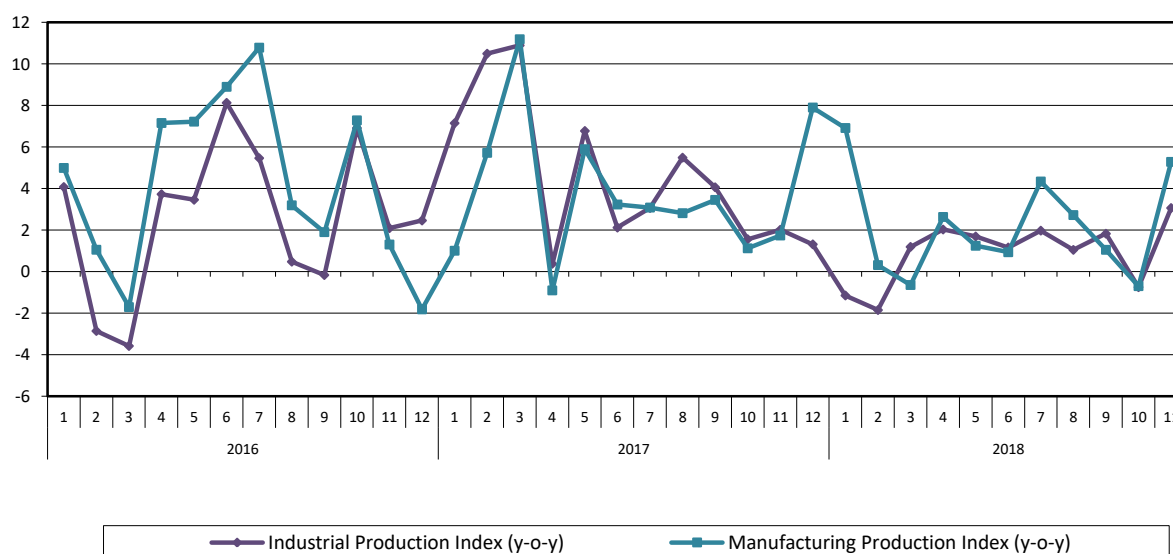
The evolution of the Industrial Production Index (IPI) with base year 2010=100.0 in November 2018, on the basis of provisional and working day adjusted data, is as follows:

The Overall Industrial Production Index in November 2018 recorded an increase of 3.1% compared with November 2017. The corresponding annual rate of change of the Overall IPI in November 2017 was 2.0% (Table 1).

The average Overall Industrial Production Index for the period from January to November 2018 recorded an increase of 0.9% compared with the average IPI of the period from January to November 2017 (Table 2).

The seasonally adjusted Overall Industrial Production Index in November 2018 recorded an increase of 3.1% compared with October 2018 (Table 4).

Graph 1. Evolution of annual rates of change (y-o-y) of the Industrial Production Index and the Manufacturing Production Index (%)



Information:

Economic and Short-Term Indices Division
Production Indices Section

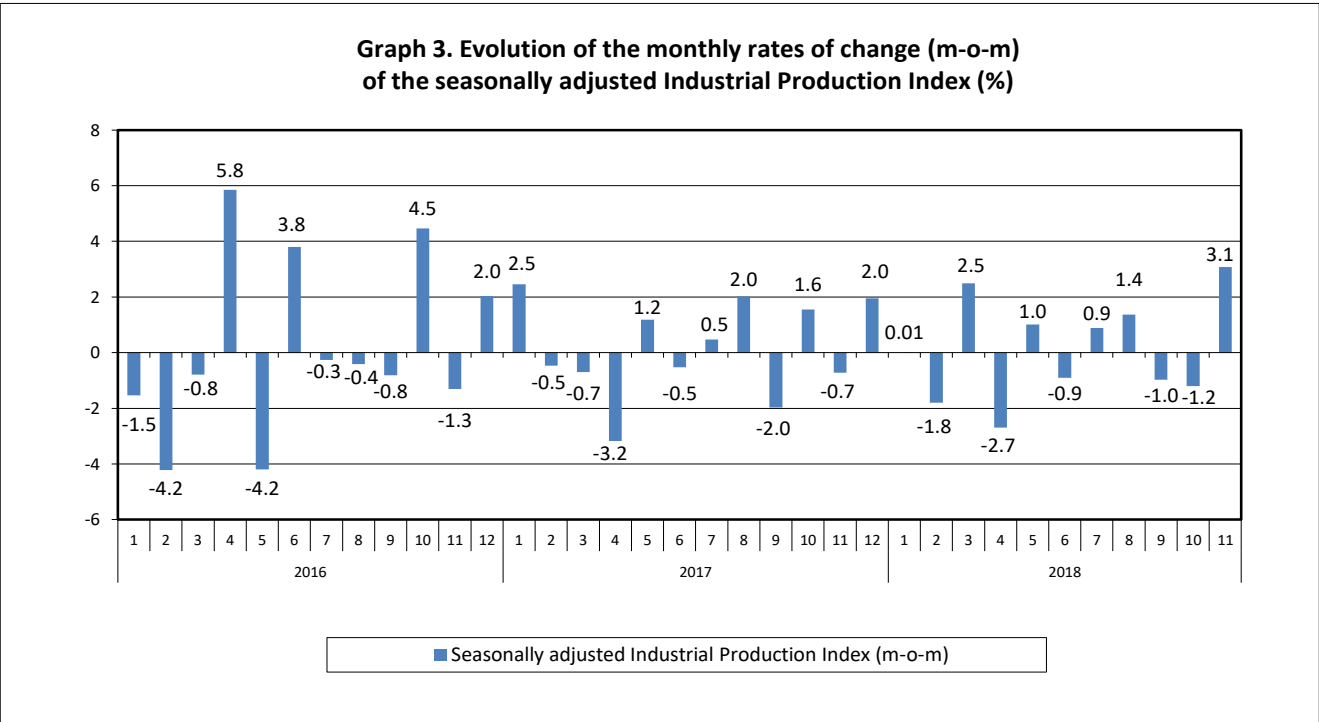
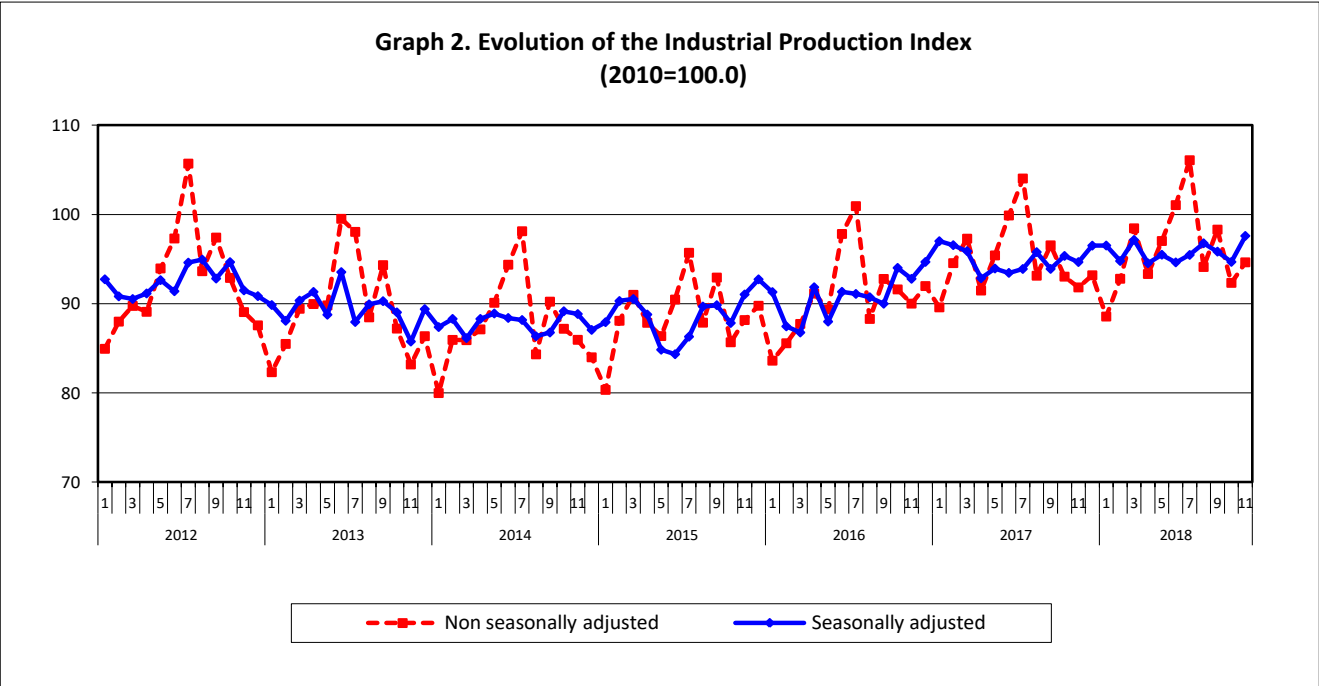
Diamantaki Aikaterini, Thymoglou Georgia

Tel: +30 213 135 2122, +30 213 135 2737

Fax: +30 213 135 2738

E-mail: a.diamantaki@statistics.gr, g.thymoglou@statistics.gr

The following graphs depict the evolution of the seasonally and non-seasonally adjusted Overall Industrial Production Index, as well as the monthly rates of change (m-o-m) of the seasonally adjusted index.



It should be noted that the time series with the seasonally adjusted indices is recalculated every time a new observation is added in the time series. Therefore, the seasonally adjusted data differ from the data published in the previous Press Release.

Evolution of the Industrial Production Index in November 2018

I. Annual changes: November 2018/ November 2017 (Table 1)

The 3.1% increase of the working day adjusted Overall IPI in November 2018, compared with the corresponding index in November 2017, is due to the annual changes of the sub-indices in the following industrial sections:

1. Increase of:

- 5.3% in the Manufacturing Production Index. The increase was the result of the annual changes of the sub-indices in the following 2-digit divisions: beverages, wood and cork, printing and recording services, chemicals and chemical products, basic pharmaceutical products and pharmaceutical preparations, fabricated metal products, computers, electronic and optical products, furniture.
- 0.5% in the Water Supply Production Index.

2. Decrease of:

- 4.1% in the Mining and Quarrying Production Index. The decrease was the result of the annual changes of the sub-indices in the following 2-digit divisions: mining of coal and lignite, other mining and quarrying products.
- 2.2% in the Electricity Production Index.

II. Rates of change of the average index in the period January – November 2018 compared with the corresponding index of the period January – November 2017 (Table 2)

The 0.9% increase of the working day adjusted Overall IPI in the 11-month period January – November 2018, compared with the corresponding index in January – November 2017, is due to the corresponding rates of change of the sub-indices in the following industrial sections:

1. Increase of:

- 2.1% in the Manufacturing Production Index.

2. Decrease of:

- 0.9% in the Mining and Quarrying Production Index.
- 2.0% in the Electricity Production Index.
- 2.3% in the Water Supply Production Index.

III. Monthly changes: November 2018/ October 2018 (Table 4)

The 3.1% increase of the seasonally adjusted Overall IPI in November 2018, compared with the corresponding index in October 2018, is due to the monthly changes of the sub-indices in the following industrial sections:

1. Increase of:

- 3.7% in the Manufacturing Production Index.
- 2.7% in the Electricity Production Index.
- 2.1% in the Water Supply Production Index.

2. Decrease of:

- 8.6% in the Mining and Quarrying Production Index.

The following graph depicts the evolution of the Industrial Production Index and the Industrial Sections Indices.

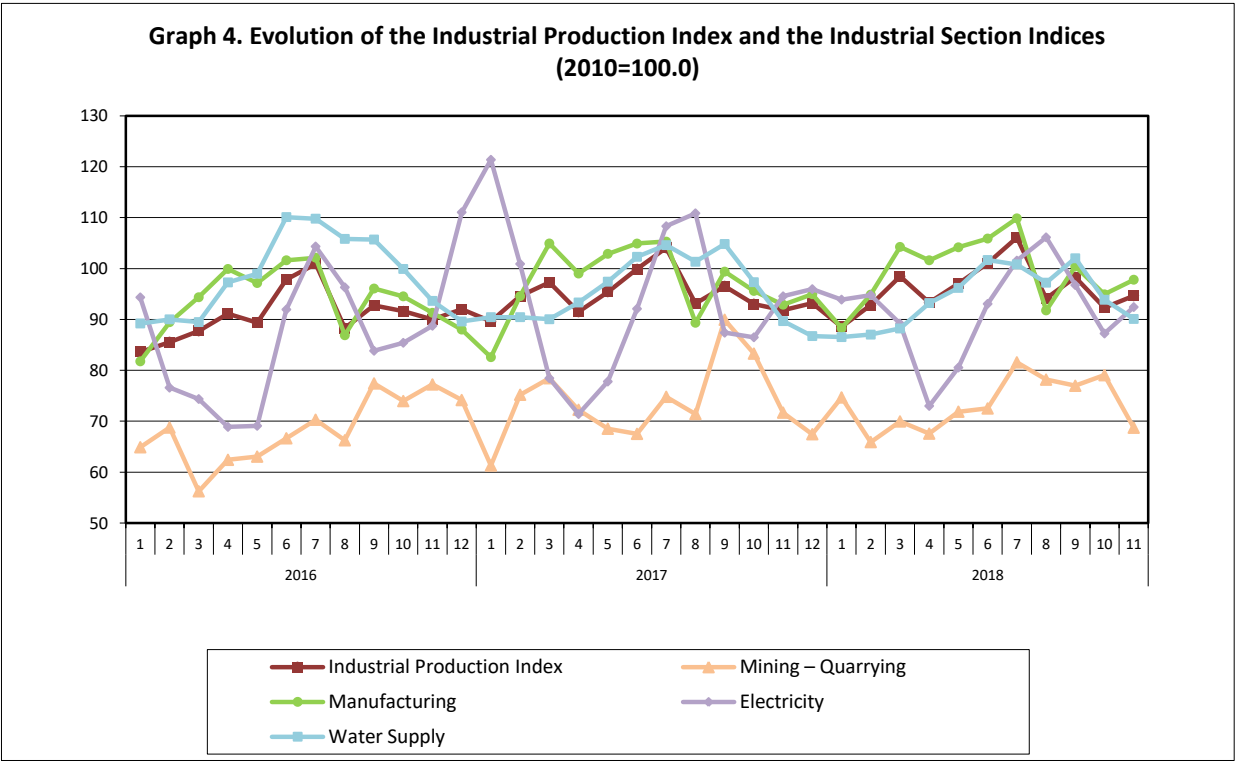


Table 1. Annual rates of change of the Industrial Production Index*(Working day adjusted data, according to the real number of working days)***Base year: 2010=100.0**

Code		Division	November			Rate of change (%)	
			2018*	2017	2016	2018/2017	2017/2016
OVERALL INDEX			94.63	91.82	90.01	3.1	2.0
B	MINING AND QUARRYING		68.73	71.69	77.23	-4.1	-7.2
05	Mining of coal and lignite		58.30	63.23	74.04	-7.8	-14.6
06	Extraction of crude petroleum and natural gas		197.11	133.63	147.87	47.5	-9.6
07	Mining of metal ores		86.92	83.03	78.94	4.7	5.2
08	Other mining and quarrying products		72.39	80.11	76.77	-9.6	4.3
C	MANUFACTURING		97.80	92.89	91.30	5.3	1.7
10	Food		87.87	85.04	84.37	3.3	0.8
11	Beverages		55.12	49.69	55.04	10.9	-9.7
12	Tobacco products		93.38	90.40	128.55	3.3	-29.7
13	Textiles		65.24	66.69	65.66	-2.2	1.6
14	Wearing apparel		50.47	49.46	49.19	2.0	0.6
15	Leather and related products		43.34	43.04	50.98	0.7	-15.6
16	Wood and cork		51.10	45.53	50.01	12.2	-8.9
17	Paper and paper products		93.86	98.17	95.55	-4.4	2.7
18	Printing and recording services		52.93	47.46	52.70	11.5	-10.0
19	Coke and refined petroleum products		141.37	137.33	128.19	2.9	7.1
20	Chemicals and chemical products		103.18	93.08	95.40	10.9	-2.4
21	Basic pharmaceutical products and pharmaceutical preparations		159.81	129.93	114.20	23.0	13.8
22	Rubber and plastic products		96.58	92.28	91.42	4.7	0.9
23	Other non-metallic mineral products		68.72	69.44	67.11	-1.0	3.5
24	Basic metals		151.12	140.37	124.47	7.7	12.8
25	Fabricated metal products		85.62	77.56	88.35	10.4	-12.2
26	Computers, electronic and optical products		153.95	120.55	106.48	27.7	13.2
27	Electrical equipment		58.88	69.29	78.61	-15.0	-11.9
28	Machinery and equipment n. e. c.		119.71	117.20	102.28	2.1	14.6
29	Motor vehicles, trailers and semi-trailers		97.10	98.15	114.94	-1.1	-14.6
30	Other transport equipment		76.67	77.74	86.33	-1.4	-9.9
31	Furniture		56.20	50.47	56.14	11.4	-10.1
32	Other manufactured goods		97.10	93.41	87.07	4.0	7.3
33	Repair and installation services of machinery and equipment		62.07	66.83	68.65	-7.1	-2.7
D	ELECTRICITY		92.43	94.54	88.75	-2.2	6.5
35	Production and distribution of electricity		92.43	94.54	88.75	-2.2	6.5
E	WATER SUPPLY		90.10	89.67	93.64	0.5	-4.2
36	Treatment and supply services of natural water		90.10	89.67	93.64	0.5	-4.2
MAIN INDUSTRIAL GROUPINGS							
1	Energy		102.68	102.88	98.77	-0.2	4.2
2	Intermediate goods		94.61	92.17	89.35	2.6	3.2
3	Capital goods		87.12	81.78	86.27	6.5	-5.2
4	Consumer Durables		48.18	57.59	57.68	-16.3	-0.2
5	Consumer Non-Durables		87.92	80.33	81.16	9.4	-1.0

* Provisional data

Note: The indices are rounded up to two decimal figures when published and percentage changes up to one decimal figure when published.

Table 2. Average indices of the period January – November and rates of change (%) of the Industrial Production Index
(Working day adjusted data, according to the real number of working days)

Base year: 2010=100.0

Code		Division	Average indices of the period Jan.-Nov.			Rate of change (%)	
			2018*	2017	2016	2018/2017	2017/2016
OVERALL INDEX			96.06	95.16	90.80	0.9	4.8
B	MINING AND QUARRYING		73.36	74.03	67.93	-0.9	9.0
05	Mining of coal and lignite		64.40	65.96	55.01	-2.4	19.9
06	Extraction of crude petroleum and natural gas		163.09	110.71	141.12	47.3	-21.5
07	Mining of metal ores		83.38	84.34	82.81	-1.1	1.8
08	Other mining and quarrying products		80.70	84.46	83.79	-4.5	0.8
C	MANUFACTURING		99.44	97.40	94.11	2.1	3.5
10	Food		96.66	96.97	95.60	-0.3	1.4
11	Beverages		90.09	84.83	91.10	6.2	-6.9
12	Tobacco products		71.81	98.98	120.56	-27.5	-17.9
13	Textiles		61.62	64.64	66.31	-4.7	-2.5
14	Wearing apparel		46.75	45.67	50.01	2.4	-8.7
15	Leather and related products		46.44	48.40	50.60	-4.1	-4.3
16	Wood and cork		43.47	42.14	42.34	3.1	-0.5
17	Paper and paper products		100.24	99.67	97.91	0.6	1.8
18	Printing and recording services		46.32	46.41	52.64	-0.2	-11.8
19	Coke and refined petroleum products		137.10	133.47	128.20	2.7	4.1
20	Chemicals and chemical products		109.92	105.37	104.21	4.3	1.1
21	Basic pharmaceutical products and pharmaceutical preparations		145.93	125.46	108.43	16.3	15.7
22	Rubber and plastic products		94.20	93.42	92.55	0.8	0.9
23	Other non-metallic mineral products		64.38	63.28	64.21	1.7	-1.4
24	Basic metals		148.20	143.35	113.67	3.4	26.1
25	Fabricated metal products		87.63	86.12	83.16	1.8	3.6
26	Computers, electronic and optical products		122.28	105.67	96.50	15.7	9.5
27	Electrical equipment		60.84	73.31	72.63	-17.0	0.9
28	Machinery and equipment n. e. c.		100.60	99.09	95.20	1.5	4.1
29	Motor vehicles, trailers and semi-trailers		81.85	86.86	66.15	-5.8	31.3
30	Other transport equipment		58.11	61.85	77.02	-6.1	-19.7
31	Furniture		57.12	48.98	51.57	16.6	-5.0
32	Other manufactured goods		91.40	91.95	89.29	-0.6	3.0
33	Repair and installation services of machinery and equipment		55.08	55.89	51.35	-1.4	8.8
D	ELECTRICITY		91.68	93.60	84.89	-2.0	10.3
35	Production and distribution of electricity		91.68	93.60	84.89	-2.0	10.3
E	WATER SUPPLY		94.26	96.52	99.08	-2.3	-2.6
36	Treatment and supply services of natural water		94.26	96.52	99.08	-2.3	-2.6
MAIN INDUSTRIAL GROUPINGS							
1	Energy		101.96	102.15	95.42	-0.2	7.1
2	Intermediate goods		94.65	94.01	88.10	0.7	6.7
3	Capital goods		73.33	71.29	68.08	2.9	4.7
4	Consumer Durables		54.67	55.85	55.38	-2.1	0.9
5	Consumer Non-Durables		96.70	94.15	94.09	2.7	0.1

* Provisional data

Note: The indices are rounded up to two decimal figures when published and percentage changes up to one decimal figure when published.

Table 3. Monthly rate of change of the Industrial Production Index*(Working day adjusted data, according to the real number of working days)*

Base year: 2010=100.0

Code	Division	November 2018*	October 2018**	Rate of change (%) Nov. 2018 / Oct. 2018
OVERALL INDEX		94.63	92.33	2.5
B	MINING AND QUARRYING	68.73	79.05	-13.1
05	Mining of coal and lignite	58.30	64.17	-9.1
06	Extraction of crude petroleum and natural gas	197.11	158.76	24.2
07	Mining of metal ores	86.92	79.26	9.7
08	Other mining and quarrying products	72.39	104.35	-30.6
C	MANUFACTURING	97.80	94.93	3.0
10	Food	87.87	89.55	-1.9
11	Beverages	55.12	62.89	-12.4
12	Tobacco products	93.38	101.10	-7.6
13	Textiles	65.24	61.03	6.9
14	Wearing apparel	50.47	49.15	2.7
15	Leather and related products	43.34	46.37	-6.5
16	Wood and cork	51.10	43.53	17.4
17	Paper and paper products	93.86	96.59	-2.8
18	Printing and recording services	52.93	46.66	13.4
19	Coke and refined petroleum products	141.37	129.92	8.8
20	Chemicals and chemical products	103.18	107.67	-4.2
21	Basic pharmaceutical products and pharmaceutical preparations	159.81	143.28	11.5
22	Rubber and plastic products	96.58	94.39	2.3
23	Other non-metallic mineral products	68.72	69.06	-0.5
24	Basic metals	151.12	147.39	2.5
25	Fabricated metal products	85.62	80.73	6.1
26	Computers, electronic and optical products	153.95	131.93	16.7
27	Electrical equipment	58.88	49.01	20.1
28	Machinery and equipment n. e. c.	119.71	96.55	24.0
29	Motor vehicles, trailers and semi-trailers	97.10	77.14	25.9
30	Other transport equipment	76.67	62.67	22.3
31	Furniture	56.20	55.74	0.8
32	Other manufactured goods	97.10	90.58	7.2
33	Repair and installation services of machinery and equipment	62.07	63.26	-1.9
D	ELECTRICITY	92.43	87.23	6.0
35	Production and distribution of electricity	92.43	87.23	6.0
E	WATER SUPPLY	90.10	93.87	-4.0
36	Treatment and supply services of natural water	90.10	93.87	-4.0
MAIN INDUSTRIAL GROUPINGS				
1	Energy	102.68	97.57	5.2
2	Intermediate goods	94.61	95.22	-0.6
3	Capital goods	87.12	76.90	13.3
4	Consumer Durables	48.18	50.02	-3.7
5	Consumer Non-Durables	87.92	88.31	-0.4

* Provisional data **Revised data

Note: The indices are rounded up to two decimal figures when published and percentage changes up to one decimal figure when published.

Table 4. Monthly rate of change of the seasonally adjusted Industrial Production Index

Base year: 2010=100.0

Code	Division	November 2018	October 2018	Rate of change (%) Nov. 2018 / Oct. 2018
OVERALL INDEX		97.59	94.68	3.1
B	MINING AND QUARRYING	68.47	74.90	-8.6
05	Mining of coal and lignite	59.89	63.82	-6.2
06	Extraction of crude petroleum and natural gas	194.82	166.69	16.9
07	Mining of metal ores	82.11	73.09	12.3
08	Other mining and quarrying products	72.30	89.67	-19.4
C	MANUFACTURING	100.36	96.74	3.7
10	Food	97.68	94.85	3.0
11	Beverages	86.49	85.12	1.6
12	Tobacco products	84.37	89.51	-5.7
13	Textiles	59.87	59.06	1.4
14	Wearing apparel	47.16	46.21	2.0
15	Leather and related products	45.16	43.87	2.9
16	Wood and cork	46.05	41.80	10.1
17	Paper and paper products	95.40	93.67	1.8
18	Printing and recording services	49.79	46.05	8.1
19	Coke and refined petroleum products	140.02	132.83	5.4
20	Chemicals and chemical products	112.56	106.83	5.4
21	Basic pharmaceutical products and pharmaceutical preparations	160.38	149.65	7.2
22	Rubber and plastic products	94.15	89.64	5.0
23	Other non-metallic mineral products	64.90	63.15	2.8
24	Basic metals	150.25	149.53	0.5
25	Fabricated metal products	87.78	83.14	5.6
26	Computers, electronic and optical products	149.12	141.59	5.3
27	Electrical equipment	56.49	48.05	17.6
28	Machinery and equipment n. e. c.	110.07	97.12	13.3
29	Motor vehicles, trailers and semi-trailers	78.26	77.78	0.6
30	Other transport equipment	63.40	59.64	6.3
31	Furniture	56.90	57.58	-1.2
32	Other manufactured goods	97.07	91.12	6.5
33	Repair and installation services of machinery and equipment	57.43	57.10	0.6
D	ELECTRICITY	95.51	92.96	2.7
35	Production and distribution of electricity	95.51	92.96	2.7
E	WATER SUPPLY	94.95	93.02	2.1
36	Treatment and supply services of natural water	94.95	93.02	2.1
MAIN INDUSTRIAL GROUPINGS				
1	Energy	104.67	101.47	3.2
2	Intermediate goods	93.61	92.17	1.6
3	Capital goods	77.15	73.56	4.9
4	Consumer Durables	48.46	50.52	-4.1
5	Consumer Non-Durables	98.98	94.93	4.3

Notes:

1. The indices are rounded up to two decimal figures when published and percentage changes up to one decimal figure when published.
2. The whole time-series with seasonally adjusted indices is recalculated every time a new observation is added in the time-series.

Table 5. Evolution of the Overall Industrial Production Index

(Working day adjusted data, according to the real number of working days)

Base year: 2010=100.0

Year and month	Overall Index	Monthly rate of change (%)	Annual rate of change (%)	12-month average indices (moving average)	Rate of change of the 12-month average indices (%)
2016: 1	83.61	-6.9	4.1	88.96	1.3
2	85.56	2.3	-2.9	88.75	0.9
3	87.73	2.5	-3.6	88.48	0.1
4	91.13	3.9	3.7	88.75	0.3
5	89.36	-1.9	3.5	89.00	1.0
6	97.82	9.5	8.1	89.61	2.0
7	100.94	3.2	5.5	90.05	2.8
8	88.29	-12.5	0.5	90.08	2.5
9	92.77	5.1	-0.2	90.07	2.2
10	91.60	-1.3	6.9	90.56	2.9
11	90.01	-1.7	2.1	90.72	2.8
12	91.98	2.2	2.5	90.90	2.5
Annual average	90.90	–	–	90.90	2.5
2017: 1	89.59	-2.6	7.1	91.40	2.7
2	94.55	5.5	10.5	92.15	3.8
3	97.29	2.9	10.9	92.94	5.0
4	91.47	-6.0	0.4	92.97	4.8
5	95.41	4.3	6.8	93.48	5.0
6	99.89	4.7	2.1	93.65	4.5
7	104.03	4.1	3.1	93.91	4.3
8	93.14	-10.5	5.5	94.31	4.7
9	96.54	3.7	4.1	94.62	5.1
10	93.03	-3.6	1.6	94.74	4.6
11	91.82	-1.3	2.0	94.89	4.6
12	93.18	1.5	1.3	94.99	4.5
Annual average	94.99	–	–	94.99	4.5
2018: 1	88.56	-5.0	-1.2	94.91	3.8
2	92.79	4.8	-1.9	94.76	2.8
3	98.45	6.1	1.2	94.86	2.1
4	93.33	-5.2	2.0	95.01	2.2
5	97.03	4.0	1.7	95.15	1.8
6	101.05	4.1	1.2	95.25	1.7
7	106.08	5.0	2.0	95.42	1.6
8	94.11	-11.3	1.0	95.50	1.3
9	98.30	4.5	1.8	95.64	1.1
10**	92.33	-6.1	-0.7	95.59	0.9
11*	94.63	2.5	3.1	95.82	1.0

* Provisional data ** Revised data

Note: The indices are rounded up to two decimal figures when published and percentage changes up to one decimal figure when published.

Table 6. Monthly evolution of the seasonally adjusted Overall Industrial Production Index and Main Industrial Groupings

Base year: 2010=100.0

Year and month	Overall Index		Energy		Intermediate goods		Capital goods		Consumer durables		Consumer non-durables	
	Index	Monthly rate of change (%)	Index	Monthly rate of change (%)	Index	Monthly rate of change (%)	Index	Monthly rate of change (%)	Index	Monthly rate of change (%)	Index	Monthly rate of change (%)
2016:	1	91.30 -1.5	98.77 -1.3	84.34 -2.5	63.67 -11.2	54.29 -21.4	95.80 1.5					
	2	87.46 -4.2	89.00 -9.9	86.13 2.1	65.43 2.8	51.15 -5.8	93.67 -2.2					
	3	86.77 -0.8	87.33 -1.9	85.78 -0.4	67.19 2.7	53.28 4.2	93.34 -0.4					
	4	91.85 5.8	94.94 8.7	89.01 3.8	69.28 3.1	57.80 8.5	97.27 4.2					
	5	87.99 -4.2	93.28 -1.8	83.26 -6.5	69.09 -0.3	55.52 -4.0	91.23 -6.2					
	6	91.33 3.8	92.98 -0.3	92.76 11.4	74.07 7.2	56.46 1.7	93.65 2.7					
	7	91.10 -0.3	96.96 4.3	85.86 -7.4	72.49 -2.1	59.18 4.8	93.90 0.3					
	8	90.72 -0.4	96.67 -0.3	88.05 2.6	76.81 5.9	61.02 3.1	89.82 -4.3					
	9	89.99 -0.8	98.00 1.4	86.02 -2.3	74.44 -3.1	56.27 -7.8	88.03 -2.0					
	10	94.01 4.5	103.29 5.4	88.18 2.5	75.51 1.4	57.17 1.6	92.87 5.5					
	11	92.79 -1.3	100.82 -2.4	88.25 0.1	76.52 1.3	56.02 -2.0	91.67 -1.3					
	12	94.68 2.0	109.62 8.7	85.78 -2.8	72.03 -5.9	54.88 -2.0	89.57 -2.3					
Annual average	90.83	96.80	86.95	71.38	56.09	92.57						
2017:	1	97.01 2.5	113.17 3.2	90.90 6.0	75.13 4.3	51.27 -6.6	87.76 -2.0					
	2	96.56 -0.5	105.89 -6.4	93.33 2.7	80.46 7.1	56.91 11.0	92.53 5.4					
	3	95.89 -0.7	101.01 -4.6	94.94 1.7	77.13 -4.1	60.16 5.7	95.96 3.7					
	4	92.85 -3.2	100.89 -0.1	90.27 -4.9	69.09 -10.4	53.87 -10.5	91.65 -4.5					
	5	93.94 1.2	100.37 -0.5	92.72 2.7	74.49 7.8	59.74 10.9	92.50 0.9					
	6	93.45 -0.5	99.55 -0.8	91.78 -1.0	75.42 1.2	57.30 -4.1	92.70 0.2					
	7	93.89 0.5	98.50 -1.1	92.75 1.1	81.43 8.0	55.91 -2.4	93.60 1.0					
	8	95.78 2.0	100.80 2.3	98.43 6.1	71.39 -12.3	54.31 -2.9	94.21 0.7					
	9	93.90 -2.0	99.39 -1.4	93.46 -5.0	71.25 -0.2	56.41 3.9	93.94 -0.3					
	10	95.35 1.6	102.24 2.9	93.25 -0.2	75.75 6.3	57.54 2.0	94.36 0.4					
	11	94.66 -0.7	104.92 2.6	91.17 -2.2	72.73 -4.0	57.09 -0.8	90.74 -3.8					
	12	96.51 2.0	102.68 -2.1	92.76 1.7	75.06 3.2	65.53 14.8	98.05 8.0					
Annual average	94.98	102.45	92.98	74.94	57.17	93.17						
2018:	1	96.52 0.01	102.26 -0.4	95.84 3.3	78.23 4.2	60.36 -7.9	95.39 -2.7					
	2	94.78 -1.8	101.67 -0.6	89.99 -6.1	75.16 -3.9	60.49 0.2	96.10 0.7					
	3	97.15 2.5	105.05 3.3	95.53 6.1	76.57 1.9	58.48 -3.3	94.53 -1.6					
	4	94.53 -2.7	100.07 -4.7	92.25 -3.4	81.70 6.7	60.08 2.7	93.89 -0.7					
	5	95.49 1.0	100.15 0.1	93.74 1.6	77.96 -4.6	57.85 -3.7	96.81 3.1					
	6	94.63 -0.9	100.91 0.8	92.41 -1.4	74.96 -3.8	55.70 -3.7	94.67 -2.2					
	7	95.46 0.9	99.42 -1.5	94.83 2.6	74.30 -0.9	54.19 -2.7	97.75 3.3					
	8	96.77 1.4	104.49 5.1	96.74 2.0	80.42 8.2	52.20 -3.7	92.35 -5.5					
	9	95.84 -1.0	104.37 -0.1	92.82 -4.1	78.30 -2.6	50.75 -2.8	93.38 1.1					
	10	94.68 -1.2	101.47 -2.8	92.17 -0.7	73.56 -6.1	50.52 -0.5	94.93 1.7					
	11	97.59 3.1	104.67 3.2	93.61 1.6	77.15 4.9	48.46 -4.1	98.98 4.3					

Notes:

1. The indices are rounded up to two decimal figures when published and percentage changes up to one decimal figure when published.
2. The whole time-series with seasonally adjusted indices is recalculated every time a new observation is added in the time-series.

METHODOLOGICAL NOTES

Generally	The Industrial Production Index (IPI) is compiled since 1959.
Purpose of the index	The IPI is an important business cycle indicator, which shows the monthly activity in the Mining and Quarrying, Manufacturing, Electricity and Water Supply divisions. More specifically, the objective of the Industrial Production Index is to compare the magnitude (volume) of the output in the current month with the corresponding output in any given period which is considered as base period. The IPI shows the evolution of the value added of the production factors cost, at constant prices.
Legal basis	The compilation of the IPI is governed by Council Regulation (EC) No 1165/98 concerning short-term statistics. Furthermore, the IPI is governed by Regulation (EC) No 1893/2006 of the European Parliament and of the Council, by Commission Regulation (EC) No 656/2007 and by Council Regulation (EC) No 451/2008.
Reference period	Month.
Base year	2010=100.0.
Revision	The IPI is a fixed base index. Pursuant to the provisions of Council Regulation No 1165/98 concerning short-term statistics, the index is updated every five (5) years, in years ending in 0 or 5.
Statistical classifications	At the level of branches of economic activities, the classification NACE Rev.2 of Eurostat was used (Regulation No 1893/2006), while at the level of main industrial groups, the allocation of two-digit and three-digit NACE Rev. 2 headings to categories of aggregate classification was used, in accordance with Council Regulation No 656/2007. At product level, the classification CPA 2008 of Eurostat was used, according to Council Regulation No 451/2008.
Geographical coverage	The Index covers the whole Country.
Coverage of economic activities	The index covers all the sections of industry, the main industrial groups, all levels of economic activities (divisions, groups and classes) and the level of products.
Statistical survey	The data are collected from a sample of 1,338 enterprises. The survey covers 354 products and the measurement of the surveyed products is made in terms of output quantities or in terms of production value or turnover, according to the specific situation in each branch of economic activity.
Seasonal adjustment	Seasonal adjustment is the procedure followed to remove the impact of seasonality on the time-series (i.e. the impact of monthly effects, e.g. holidays, tourist period etc), in order to improve comparability over time. The method used is the TRAMO-SEATS method with the use of JDemetra+ 2.0.0. For the seasonal adjustment of the Industrial Production Index at 2-digit level of NACE Rev.2, at section level (B – Mining and Quarrying, C – Manufacturing, D – Electricity and E – Water Supply) and for the Main Industrial Groupings (MIGs), the direct approach is applied, namely each time-series is seasonally adjusted independently. For the overall Industrial Production Index, the indirect approach is applied, with the seasonally adjusted IPI being computed by aggregating the seasonally adjusted MIGs using appropriate weights.
Publication of data	The IPI with the new base year (2010) is released since August 2014, with June 2014 as the first reference month. Data with base year 2010=100.0 are available from January 2000 onwards.
References	More information about the methodology concerning the compilation and calculation of the index and for the time series is available on the website of the Hellenic Statistical Authority (ELSTAT) (http://www.statistics.gr/en/statistics/-/publication/DKT21/-).