

PRESS RELEASE

SURVEYS ON SECONDARY GENERAL EDUCATION (LOWER AND UPPER SECONDARY SCHOOLS) END OF SCHOOL YEAR 2015/2016

The Hellenic Statistical Authority (ELSTAT) announces data on Secondary General Education (lower and upper secondary schools) deriving from the relevant surveys for the end of the school year 2015/2016. In the first part of this press release, data on lower and upper secondary education schools are presented and in the second part, there are data on the Ecclesiastical Secondary Education Schools and Second Chance Schools, as branches of the Secondary General Education.

GENERAL SECONDARY EDUCATION (LOWER AND UPPER SECONDARY SCHOOLS)

The data collected from the surveys on Secondary Education, pertaining to lower and upper secondary education schools can be summarized as follows:

- a) In lower secondary schools, **school units** in the school year 2015/2016 amounted to 1,819 in comparison to 1,807 in 2014/2015. In upper secondary schools, **school units** in the school year 2015/2016 amounted to 1,333 compared with 1,328 in 2014/15 (Tables 2 and 4, respectively);
- b) **Teaching staff** in the school year 2015/2016 compared with 2014/2015 increased by 3.5% in lower secondary schools and by 1.6% in upper secondary schools (Tables 2 and 4, respectively);
- c) **The number of pupils enrolled** in the school year 2015/2016, compared with the corresponding number in the school year 2014/2015, recorded a 1.4% decrease in lower secondary schools and a 0.8% increase in upper secondary schools (Tables 3 and 5, respectively);
- d) **The number of graduates** in the school year 2015/2016, compared with the corresponding number in the school year 2014/2015, recorded a 0.2% decrease in lower secondary schools and a 3.0% decrease in upper secondary schools (Tables 3 and 5, respectively);
- e) **The ratio of teaching staff to pupils**, in the school year 2015/2016, was 1 teacher for 8.0 pupils in lower secondary schools and 1 teacher for 10.1 pupils in upper secondary schools, while for the school year 2014/2015 the corresponding ratio was 1 to 8.4 and 1 to 10.2, respectively (Tables 2,3,4 and 5);
- f) The **Region of Attiki** accounted for the largest share of pupils enrolled in Secondary Education in Greece, with 34.0% in lower secondary schools and 35.4% in upper secondary schools (Tables 2 and 4 respectively and graphs 2 and 3 respectively).

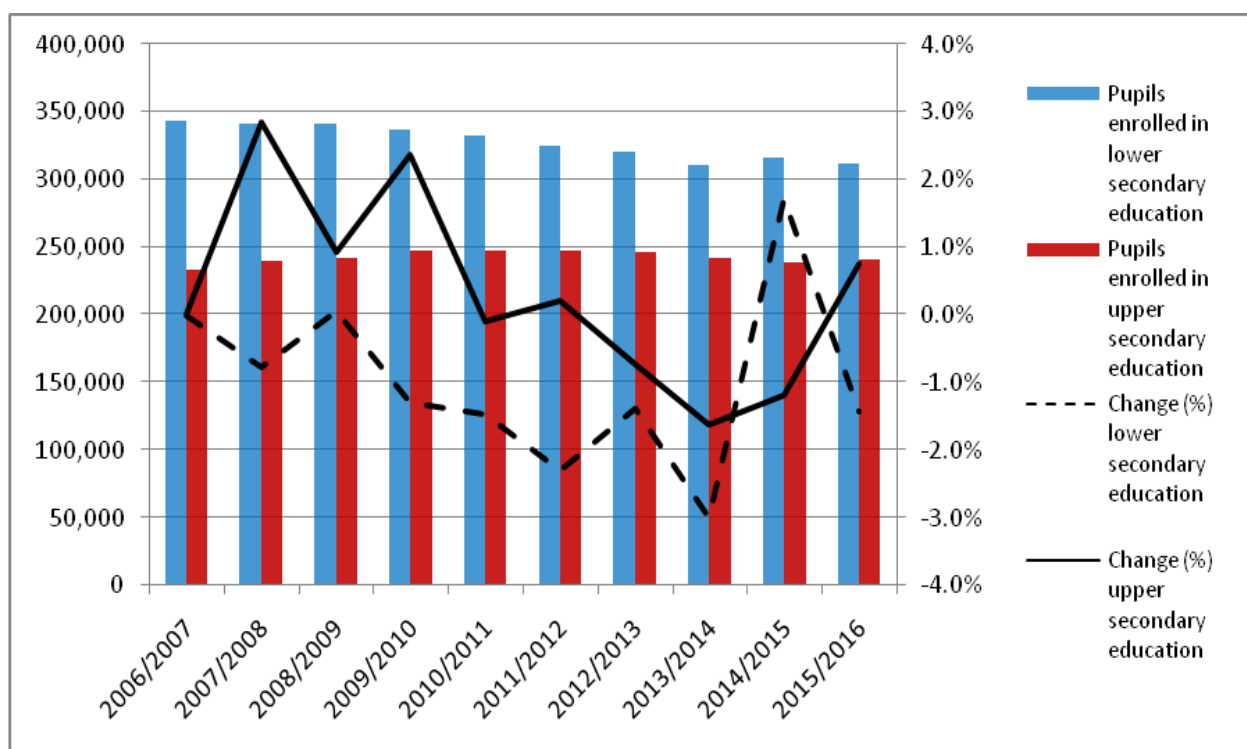
More specifically, Table 1 and Graph 1 depict the evolution of pupil population in lower and upper secondary education during the period 2006/2007 - 2015/2016.

Table 1
Evolution of pupil population in Secondary Education 2006/07 – 2015/16

School year	Pupils enrolled ¹	
	Lower secondary education schools	Upper secondary education schools
2006/2007	343,765	232,926
2007/2008	341,107	239,532
2008/2009	341,315	241,726
2009/2010	336,938	247,441
2010/2011	332,005	247,209
2011/2012	324,402	247,717
2012/2013	319,950	245,892
2013/2014	310,389	241,905
2014/2015*	315,702	239,055
2015/2016	311,236	240,852

*Revised data

Graph 1
Evolution of pupil population in Secondary Education 2006/07 – 2015/16



¹ Ecclesiastical secondary education schools and Second Chance schools are not included.

A. LOWER SECONDARY SCHOOLS

Tables 2 and 3 present data on the number of school units, teaching staff, enrolled students and graduates (Ecclesiastical Schools and Second Chance Schools are not included).

Table 2. School units and teaching staff ² (Lower secondary education)

<i>By Type of school unit</i>						
School units	Number of school units			Teaching staff		
	2014/15*	2015/16	Change (%)	2014/15*	2015/16	Change (%)
Public	1,715	1,720	0.3	35,661	36,828	3.3
Private	92	99	7.6	1,959	2,101	7.2
TOTAL	1,807	1,819	0.7	37,620	38,929	3.5
<i>By Region</i>						
Region (NUTS 2)	Number of school units			Teaching staff		
	2014/15*	2015/16	Change (%)	2014/15*	2015/16	Change (%)
Anatoliki Makedonia & Thraki	101	102	1.0	2,029	2,117	4.3
Kentriki Makedonia	295	295	0.0	6,224	6,383	2.6
Dytiki Makedonia	67	67	0.0	1,151	1,135	-1.4
Thessalia	122	125	2.5	2,652	2,842	7.2
Ipeiros	84	84	0.0	1,347	1,392	3.3
Ionia Nisia	50	50	0.0	1,108	1,113	0.5
Dytiki Ellada	143	143	0.0	2,690	2,820	4.8
Stereia Ellada	118	118	0.0	2,019	2,028	0.4
Peloponnisos	111	112	0.9	2,051	2,080	1.4
Attiki	471	477	1.3	11,419	11,922	4.4
Voreio Aigaio	52	52	0.0	968	980	1.2
Notio Aigaio	86	86	0.0	1,658	1,663	0.3
Kriti	107	108	0.9	2,304	2,454	6.5
TOTAL	1,807	1,819	0.7	37,620	38,929	3.5

*Revised data

² Absent teachers are also included.

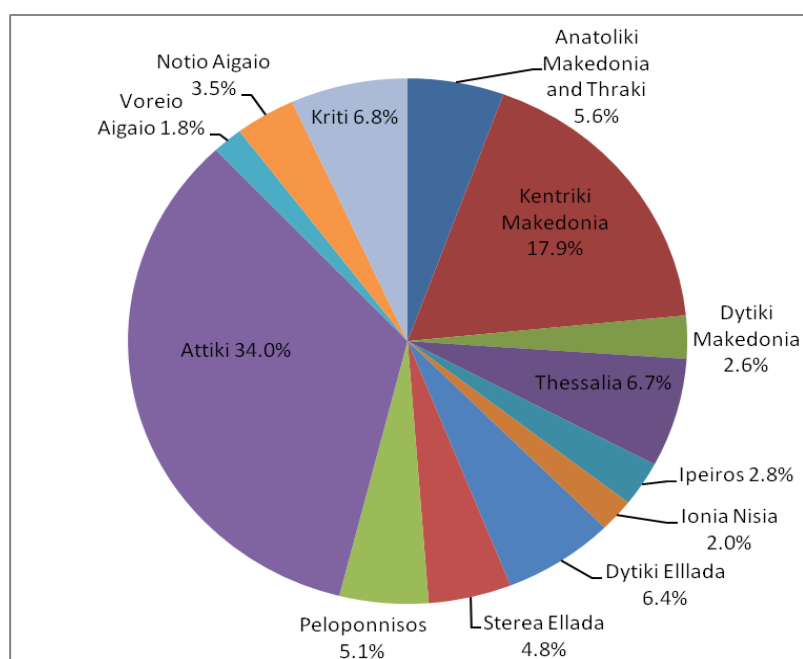
Absent teachers are the teachers with a fixed post in the school unit, who are absent for more than 20 days (due to illness, training, maternity leave, etc) and their replacement is pending, as well as the teachers who are seconded to other administrative posts of the Ministry of Education, Research and Religious Affairs or elsewhere.

**Table 3. Pupils enrolled and graduates by Type of School Unit and NUTS 2 Region
(Lower Secondary Schools)**

<i>By Type of School Unit</i>						
School units	Pupils enrolled			Graduates		
	2014/15*	2015/16	Change (%)	2014/15*	2015/16	Change (%)
Public	301,259	296,940	-1.4	95,359	95,388	0.0
Private	14,443	14,296	-1.0	4,632	4,432	-4.3
TOTAL	315,702	311,236	-1.4	99,991	99,820	-0.2
<i>By Region</i>						
Region (NUTS 2)	Pupils enrolled			Graduates		
	2014/15*	2015/16	Change (%)	2014/15*	2015/16	Change (%)
Anatoliki Makedonia & Thraki	17,912	17,323	-3.3	5,370	5,303	-1.2
Kentriki Makedonia	57,103	55,634	-2.6	18,320	18,002	-1.7
Dytiki Makedonia	8,342	8,188	-1.8	2,822	2,696	-4.5
Thessalia	20,850	20,848	0.0	6,666	6,559	-1.6
Ipeiros	8,931	8,595	-3.8	2,951	2,880	-2.4
Ionia Nisia	6,434	6,333	-1.6	2,091	2,072	-0.9
Dytiki Ellada	20,333	20,023	-1.5	6,460	6,292	-2.6
Stereia Ellada	15,033	14,933	-0.7	4,734	4,840	2.2
Peloponnisos	16,362	15,971	-2.4	5,264	5,223	-0.8
Attiki	106,831	105,954	-0.8	33,524	33,856	1.0
Voreio Aigaio	5,621	5,489	-2.3	1,842	1,766	-4.1
Notio Aigaio	10,704	10,849	1.4	3,333	3,546	6.4
Kriti	21,246	21,096	-0.7	6,614	6,785	2.6
TOTAL	315,702	311,236	-1.4	99,991	99,820	-0.2

*Revised data

**Graph 2. Percentage distribution of pupils enrolled in lower secondary schools,
by NUTS 2 Region, school year 2015/2016**



B. UPPER SECONDARY SCHOOLS

Tables 4 and 5 present data on the number of school units, teaching staff, enrolled students and graduates (Ecclesiastical Schools are not included).

Table 4. School units and teaching staff ³ (Upper secondary schools)

<i>By Type of School Units</i>						
School units	Number of school units			Teaching staff		
	2014/15	2015/16	Change (%)	2014/15	2015/16	Change (%)
Public	1,239	1,245	0.5	21,846	22,063	1.0
Private	89	88	-1.1	1,593	1,751	9.9
TOTAL	1,328	1,333	0.4	23,439	23,814	1.6
<i>By Region</i>						
Region (NUTS 2)	Number of school units			Teaching staff		
	2014/15	2015/16	Change (%)	2014/15	2015/16	Change (%)
Anatoliki Makedonia & Thraki	63	63	0.0	1,089	1,117	2.6
Kentriki Makedonia	210	211	0.5	4,050	4,117	1.7
Dytiki Makedonia	36	36	0.0	694	696	0.3
Thessalia	96	98	2.1	1,497	1,556	3.9
Ipeiros	51	51	0.0	876	865	-1.3
Ionia Nisia	36	36	0.0	495	492	-0.6
Dytiki Ellada	98	98	0.0	1,589	1,592	0.2
Stereia Ellada	90	92	2.2	1,122	1,105	-1.5
Peloponnisos	88	89	1.1	1,277	1,294	1.3
Attiki	373	373	0.0	8,150	8,353	2.5
Voreio Aigaio	42	42	0.0	546	547	0.2
Notio Aigaio	68	68	0.0	643	664	3.3
Kriti	77	76	-1.3	1,411	1,416	0.4
TOTAL	1,328	1,333	0.4	23,439	23,814	1.6

*Revised data

³ Absent teachers are also included.

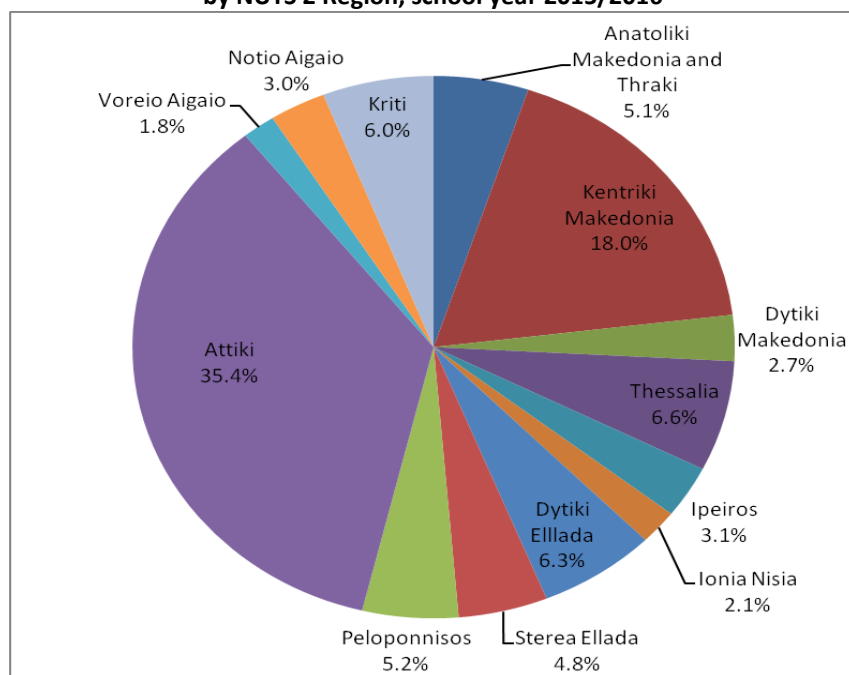
Absent teachers are the teachers with a fixed post in the school unit, who are absent for more than 20 days (due to illness, training, maternity leave, etc) and their replacement is pending, as well as the teachers who are seconded to other administrative posts of the Ministry of Education, Research and Religious Affairs or elsewhere.

**Table 5. Pupils enrolled and graduates by Type of school unit and NUTS 2 Region
(Upper Secondary Schools)**

<i>By Type of School Unit</i>						
School units	Pupils enrolled			Graduates		
	2014/15*	2015/16	Change (%)	2014/15*	2015/16	Change (%)
Public	225,445	227,477	0.9	73,947	71,525	-3.3
Private	13,610	13,375	-1.7	4,438	4,470	0.7
TOTAL	239,055	240,852	0.8	78,385	75,995	-3.0
<i>By Region</i>						
Region (NUTS 2)	Pupils enrolled			Graduates		
	2014/15*	2015/16	Change (%)	2014/15*	2015/16	Change (%)
Anatoliki Makedonia & Thraki	12,062	12,272	1.7	3,865	3,914	1.3
Kentriki Makedonia	43,204	43,361	0.4	14,263	13,698	-4.0
Dytiki Makedonia	6,613	6,575	-0.6	2,199	2,174	-1.1
Thessalia	15,767	15,840	0.5	5,250	5,085	-3.1
Ipeiros	7,488	7,511	0.3	2,471	2,420	-2.1
Ionia Nisia	4,898	4,944	0.9	1,604	1,483	-7.5
Dytiki Ellada	15,361	15,161	-1.3	5,041	4,992	-1.0
Stereia Ellada	11,596	11,558	-0.3	3,789	3,659	-3.4
Peloponnisos	12,341	12,419	0.6	4,137	3,931	-5.0
Attiki	83,983	85,289	1.6	27,411	26,793	-2.3
Voreio Aigaio	4,227	4,255	0.7	1,353	1,341	-0.9
Notio Aigaio	7,188	7,271	1.2	2,267	2,228	-1.7
Kriti	14,327	14,396	0.5	4,735	4,277	-9.7
TOTAL	239,055	240,852	0.8	78,385	75,995	-3.0

*Revised data

**Graph 3. Percentage distribution of pupils enrolled in upper secondary schools
by NUTS 2 Region, school year 2015/2016**



ECCLESIASTICAL SECONDARY EDUCATION (LOWER AND UPPER SECONDARY SCHOOLS)

The ecclesiastical lower and upper secondary schools constitute a separate branch of the Secondary General Education. More specifically:

- a) **The number of school units** in ecclesiastical secondary education remained the same between school years 2014/2015 and 2015/2016 (Tables 6 and 7, respectively);
- b) **Teaching staff**, employed in both lower and upper secondary schools in the school year 2015/2016, compared with the school year 2014/2015, decreased by 7.4% (from 190 to 176 persons).
- c) **The number of pupils enrolled** in the school year 2015/2016, compared with the corresponding number in the school year 2014/2015, recorded a 0.9% decrease in ecclesiastical lower secondary schools and a 7.5% increase in ecclesiastical upper secondary schools (Tables 6 and 7, respectively);
- d) **The number of graduates** in the school year 2015/2016, compared with the corresponding number in the school year 2014/2015, recorded a 10.8% increase in ecclesiastical lower secondary schools and a 37.3% increase in ecclesiastical upper secondary schools (Tables 6 and 7, respectively);

Table 6. Ecclesiastical Lower Secondary Schools

Pupils enrolled/Graduates and number of school units			
	School Year		
	2014/15	2015/16	Change (%)
Pupils enrolled	218	216	-0.9
Graduates	65	72	10.8
Number of School Units⁴	7	7	0.0

Table 7. Ecclesiastical Upper Secondary Schools

Pupils enrolled/Graduates and number of school units			
	School Year		
	2014/15	2015/16	Change (%)
Pupils enrolled	517	556	7.5
Graduates	126	173	37.3
Number of School Units⁵	10	10	0.0

⁴ All lower secondary schools include upper secondary school classes.

⁵ Lower secondary school units that host upper secondary school classes are included.

SECOND CHANCE SCHOOLS

In the present Press Prelease, data concerning the Second Chance Schools are presented for the first time, for the school year 2015/2016. Second Chance Schools are lower secondary education schools aimed at pupils that are over 18 years old. More analytically:

a) School units in the school year 2015/2016 amounted to 92, of which 8 operated in the morning and 84 in the afternoon (Table 8).

b) Teaching staff in the school year 2015/2016 amounted to 908 teachers, of which 327 were permanent staff and 581 on a fixed-term contract (Table 9).

c) The number of pupils enrolled in the school year 2015/2016 amounted to 5,241, of which 2,899 attended the first grade and 2,342 the second grade. Foreign pupils accounted for 15.7% of the total number of pupils (Tables 10 and 11).

Table 8. Number of school units of Second Chance Schools by type, school year 2015/2016

	Total number of school units		Of which ⁶ :			
			Central Unit		Branches	
	Morning	Afternoon	Morning	Afternoon	Morning	Afternoon
Country Total	8	84	7	55	1	29

Table 9. Number of teaching staff of Second Chance Schools, by status and gender, school year 2015/2016

Status of teaching staff			
	Total	Males	Females
Total	908	341	567
Principals	62	44	18
Vice Principals	59	31	28
Seconded permanent staff	206	84	122
Fixed-Term Contract staff	581	182	399
Hours worked by Fixed Term Contract Staff, per year	97,879	29,658	68,221

⁶ Some central school units have a branch or branches. The principal of the central school unit is also responsible for the branch(es). Branches usually operate in the vicinity of the central school units in order to better provide for the needs of the local population.

Table 10. Number of pupils of Second Chance Schools by gender and grade, school year 2015/2016

Grade	Gender	Total
A	Total	2,899
	Males	1,649
	Females	1,250
B	Total	2,342
	Males	1,376
	Females	966

Table 11. Number of foreign pupils of Second Chance Schools by gender, school year 2015/2016

	Gender	Total number of pupils	Total number of foreign pupils	EU Member States	Outside the EU	Unknown origin
Country Total	Males	3,025	566	48	499	19
	Females	2,216	259	38	221	0
	Total	5,241	825	86	720	19

Table 12. Pupils of Second Chance Schools of the second grade that graduated, by gender and NUTS 2 Region, school year 2015/2016

Regions	Total	Males	Females
Greece Total	1,871	1,041	830
Anatoliki Makedonia & Thraki	214	109	105
Kentriki Makedonia	405	218	187
Dytiki Makedonia	68	47	21
Ipeiros	108	56	52
Thessalia	155	97	58
Stereia Ellada	96	61	35
Ionia Nisia	31	14	17
Dytiki Ellada	101	51	50
Peloponnisos	76	45	31
Attiki	259	128	131
Voreio Aigaio	98	52	46
Notio Aigaio	66	37	29
Kriti	194	126	68

EXPLANATORY NOTES

Survey on General Secondary Education General Secondary Education includes lower and upper secondary schools of general education, ecclesiastical secondary schools and second chance schools. The surveys are conducted, on a yearly basis, aiming at collecting data on the number of pupils enrolled, the school units and the number of teaching staff.

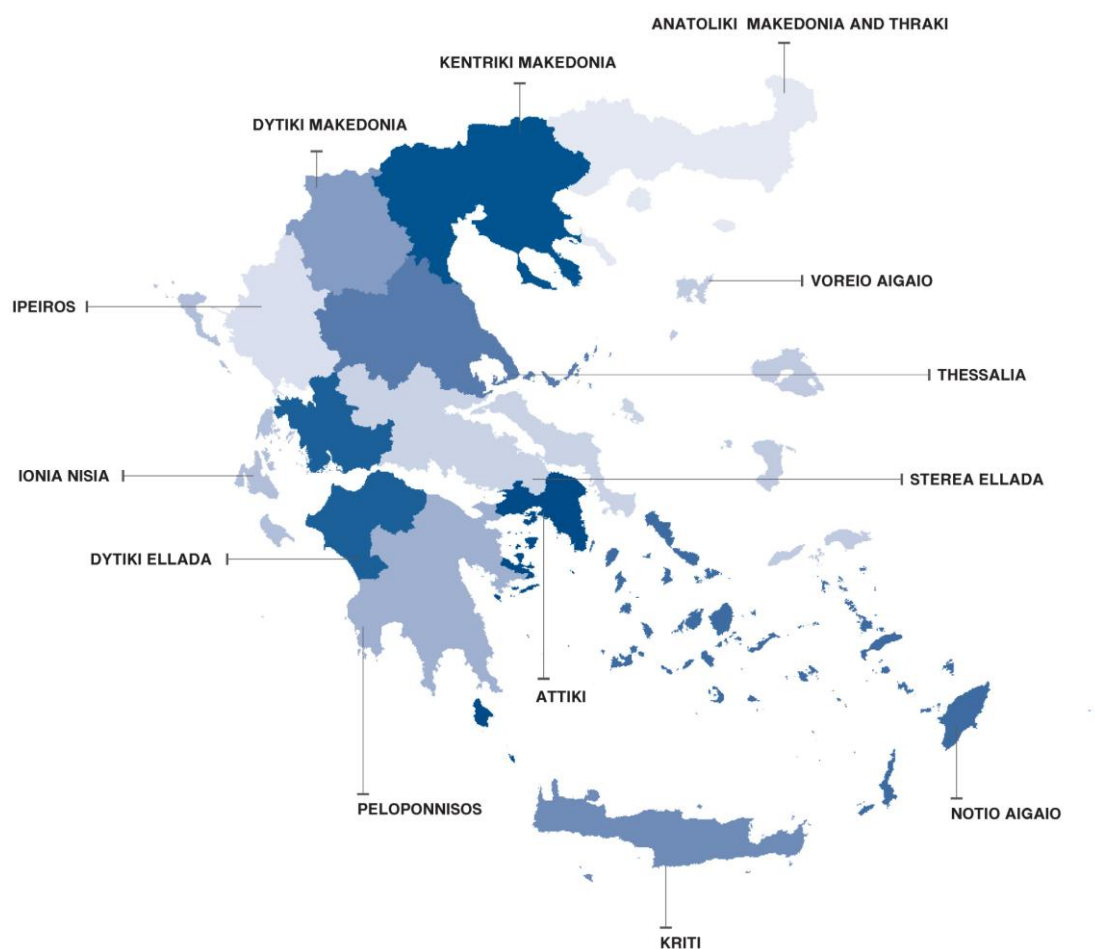
Legal Frame The surveys are conducted by virtue of Regulations (EU) No 452/2008 and 912/2013 of the European Parliament and of the Council.

Statistical Units The statistical units are the school units.

Coverage Greece total.

Geographical Classification The geographical classification is based on Nomenclature of Territorial Units for Statistics.

Map of the 13 Regions (NUTS 2) of Greece



Dissemination of results	The data are posted on a yearly basis on the website of ELSTAT and are published in a relevant Press Release.
Reference period	<p>The data of the surveys refer to the end of school year 2015/2016.</p> <p>For comparability reasons, the data of the end of the previous school year 2014/2015 are also provided, part of which have been revised since the publication of the relevant press release (09/11/2016). In addition, data for Second Chance Schools are presented for the first time for school year 2015/2016, therefore, the comparison with previous school years cannot take place.</p>
Methodology and coverage	<p>Until the school year 2013/2014, the surveys on General Secondary Education used to be census, yearly surveys and they were conducted by ELSTAT.</p> <p>For the school year 2014/2015 onwards the data of these surveys are collected as follows:</p> <ul style="list-style-type: none"> – As regards public school units, the data were extracted from the “live” e-platform “MySchool” of the Ministry of Education, Research and Religious Affairs. – As regards private school units, the data were collected from the questionnaires that had been sent to the relevant school units. <p>For Second Chance Schools, and the 2015/2016 survey, questionnaires were sent to the schools.</p>
References	<p>More information, such as tables with the survey results, samples of questionnaires, etc, on the Survey on General Secondary Education can be found on the webpage of ELSTAT www.statistics.gr and at the link: “Statistics” / Population and Social Conditions / Education / Lower Secondary Education Schools (Beginning – End of school year) or Upper Secondary Education Schools (Beginning – End of school year”).</p>