



PRESS RELEASE

SURVEYS ON PRE-PRIMARY AND PRIMARY EDUCATION KINDERGARTENS AND PRIMARY SCHOOLS, END OF SCHOOL YEAR 2015/2016

The Hellenic Statistical Authority (ELSTAT) announces data on Pre-Primary and Primary Education Statistics for the school year 2015/2016. On the basis of available survey data the following observations can be made:

- a) In the school year 2015/2016 compared with the school year 2014/15, **school units** decreased by 2.1% in kindergartens and by 0.3% in primary schools (Tables 2 and 4, respectively);
- b) In the school year 2015/2016 compared with the school year 2014/15, **teaching staff** decreased by 3.2% in kindergartens and increased by 4.4% in primary schools (Tables 2 and 4, respectively);
- c) The **number of pupils** enrolled in the school year 2015/2016 compared with the corresponding number in the school year 2014/2015 recorded a 4.6% decrease in kindergartens and a 0.4% increase in primary schools (Tables 3 and 5, respectively);
- d) The **number of graduates** in primary schools in the school year 2015/2016 compared with 2014/2015 increased by 0.1% (Table 5).
- e) The **ratio of teaching staff to pupils**, in the school year 2015/2016, was 1 to 10.8 in kindergartens and 1 to 9.4 in primary schools; in the school year 2014/2015 the corresponding ratio was 1 to 11.0 and 1 to 9.8, respectively (Tables 2,3,4 and 5).
- f) The **Region of Attiki** accounted for the largest share of pupils enrolled in pre-primary and primary education schools with 30.6% for kindergartens and 34.6% for primary schools (Tables 2 and 4, respectively).

Information:

Social Statistics Division

Education Statistics Section

Evdokia Oikonomou, Evanthia Stavraki

Tel: +30 213 135 2134, +30 213 135 2781

Fax: +30 213 135 2780

e-mail: evd.oikonomou@statistics.gr

e.stavraki@statistics.gr

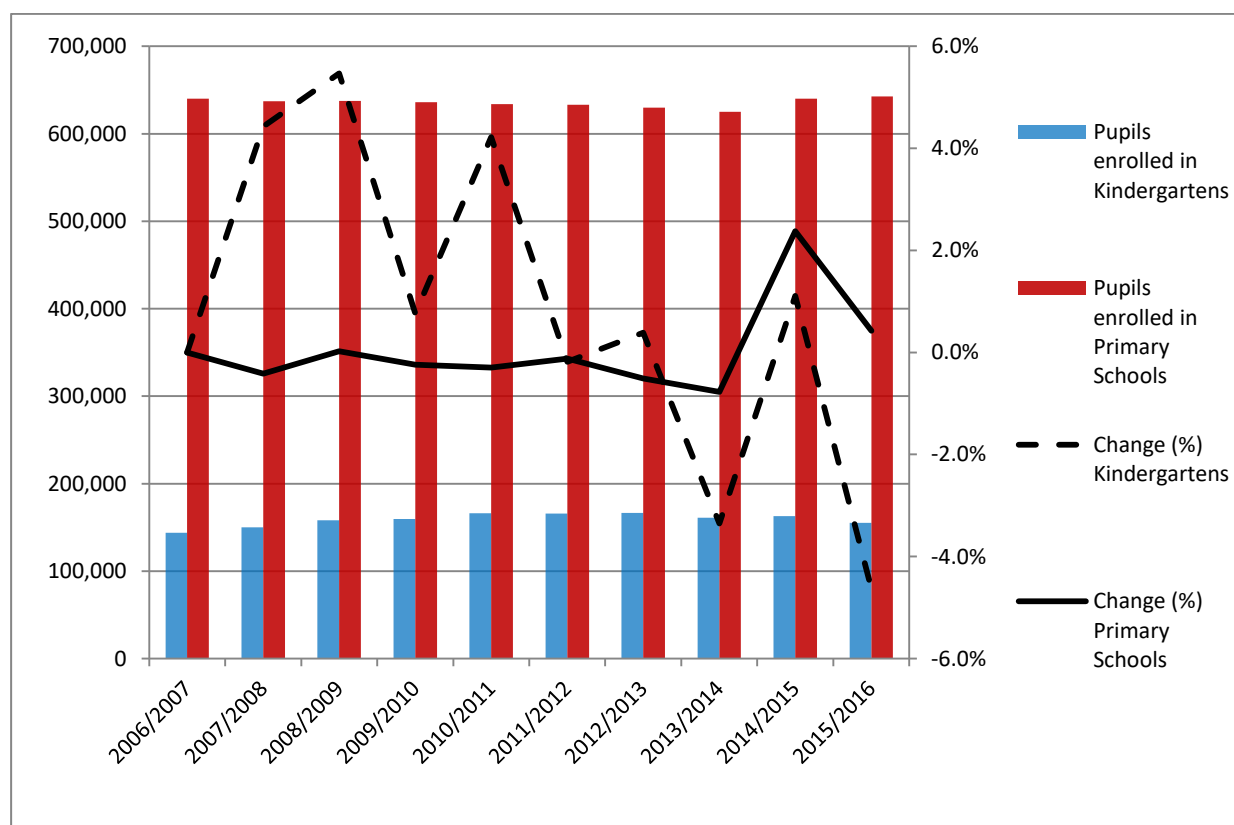
Table 1 and Graph 1 depict the evolution of the pupil population of kindergartens and primary schools during the ten-year period 2006/2007-2015/2016.

Table 1
Evolution of pupil population in Pre-Primary and Primary Education 2006/07 - 2015/16

School Year	Number of Pupils	
	Kindergartens	Primary Schools
2006/2007	143,716	639,961
2007/2008	150,079	637,309
2008/2009	158,290	637,476
2009/2010	159,502	635,935
2010/2011	166,233	634,048
2011/2012	165,931	633,291
2012/2013	166,576	630,043
2013/2014	160,994	625,165
2014/2015*	162,781	640,001
2015/2016	155,243	642,707

*Revised data

Graph 1
Evolution of pupil population in Pre-Primary and Primary Education 2006/07 - 2015/16



A. KINDERGARTENS

Tables 2 and 3 present data on the number of kindergartens, teaching staff and pupils enrolled.

Table 2. School Units and Teaching Staff by Type of School Unit and NUTS 2 Region (Kindergartens)

<i>By Type of School Unit</i>						
School Units	Number of School Units			Teaching Staff		
	2014/15*	2015/16	Change (%)	2014/15*	2015/16	Change (%)
Public	5,171	5,035	-2.6	13,803	13,441	-2.6
Private ¹	586	602	2.7	985	880	-10.7
TOTAL	5,757	5,637	-2.1	14,788	14,321	-3.2
<i>By Region</i>						
NUTS 2 Region	Number of School Units			Teaching Staff		
	2014/15*	2015/16	Change (%)	2014/15*	2015/16	Change (%)
Anatoliki Makedonia & Thraki	333	322	-3.3	839	812	-3.2
Kentriki Makedonia	1,033	1,006	-2.6	2,673	2,628	-1.7
Dytiki Makedonia	190	190	0.0	457	455	-0.4
Thessalia	472	462	-2.1	1,034	1,022	-1.2
Ipeiros	232	218	-6.0	519	510	-1.7
Ionia Nisia	151	147	-2.6	404	376	-6.9
Dytiki Ellada	434	420	-3.2	1,007	980	-2.7
Stereia Ellada	326	314	-3.7	780	752	-3.6
Peloponnisos	348	335	-3.7	796	766	-3.8
Attiki	1,427	1,427	0.0	4,015	3,854	-4.0
Voreio Aigaio	147	145	-1.4	437	411	-5.9
Notio Aigaio	226	224	-0.9	573	532	-7.2
Kriti	438	427	-2.5	1,254	1,223	-2.5
TOTAL	5,757	5,637	-2.1	14,788	14,321	-3.2

*Revised data

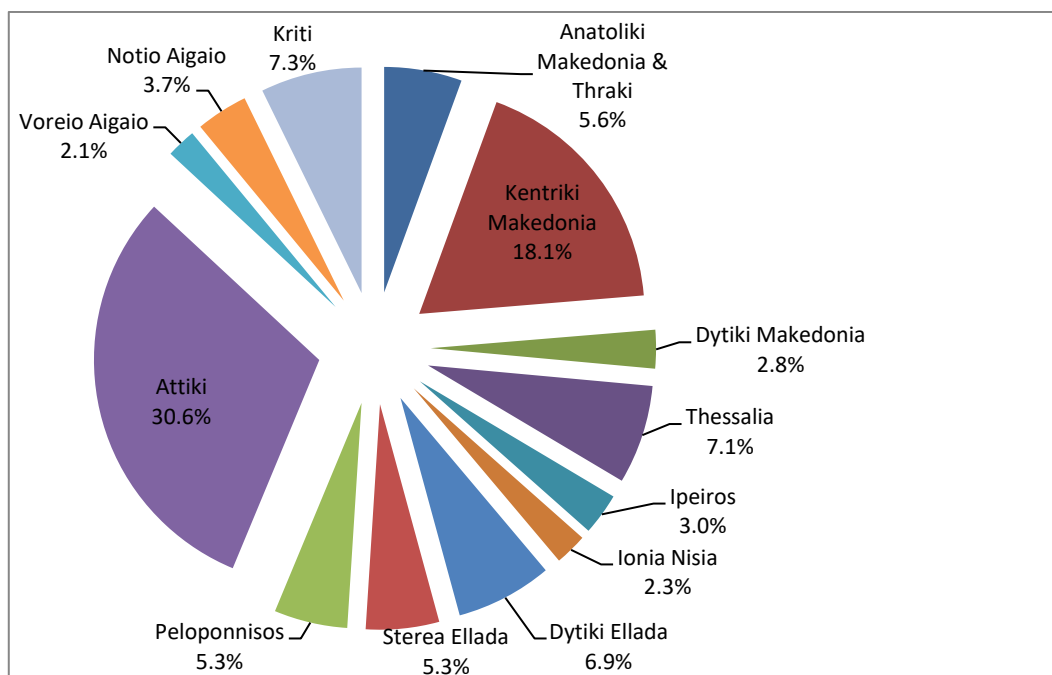
¹ The decrease of the teaching staff in private school units is due to the increase in the number of students per classroom.

Table 3. Pupils enrolled by Type of School Unit and NUTS 2 Region (Kindergartens)

<i>By Type of School Unit</i>									
School Units	Greece total			Males			Females		
	2014/15*	2015/16	Change (%)	2014/15*	2015/16	Change (%)	2014/15*	2015/16	Change (%)
Public	149,764	141,741	-5.4	76,612	72,481	-5.4	73,152	69,260	-5.3
Private	13,017	13,502	3.7	6,742	7,055	4.6	6,275	6,447	2.7
TOTAL	162,781	155,243	-4.6	83,354	79,536	-4.6	79,427	75,707	-4.7
<i>By Region</i>									
NUTS 2 Region	Greece total			Males			Females		
	2014/15*	2015/16	Change (%)	2014/15*	2015/16	Change (%)	2014/15*	2015/16	Change (%)
Anatoliki Makedonia & Thraki	9,186	8,654	-5.8	4,708	4,538	-3.6	4,478	4,116	-8.1
Kentriki Makedonia	29,500	28,126	-4.7	14,930	14,331	-4.0	14,570	13,795	-5.3
Dytiki Makedonia	4,576	4,290	-6.3	2,308	2,159	-6.5	2,268	2,131	-6.0
Thessalia	11,486	11,001	-4.2	5,856	5,543	-5.3	5,630	5,458	-3.1
Ipeiros	4,886	4,658	-4.7	2,523	2,393	-5.2	2,363	2,265	-4.1
Ionia Nisia	3,694	3,584	-3.0	1,968	1,832	-6.9	1,726	1,752	1.5
Dytiki Ellada	11,177	10,731	-4.0	5,804	5,438	-6.3	5,373	5,293	-1.5
Stereia Ellada	8,713	8,152	-6.4	4,503	4,212	-6.5	4,210	3,940	-6.4
Peloponnisos	8,491	8,162	-3.9	4,356	4,228	-2.9	4,135	3,934	-4.9
Attiki	49,862	47,559	-4.6	25,616	24,396	-4.8	24,246	23,163	-4.5
Voreio Aigaio	3,457	3,274	-5.3	1,744	1,681	-3.6	1,713	1,593	-7.0
Notio Aigaio	5,959	5,788	-2.9	3,026	2,976	-1.7	2,933	2,812	-4.1
Kriti	11,794	11,264	-4.5	6,012	5,809	-3.4	5,782	5,455	-5.7
TOTAL	162,781	155,243	-4.6	83,354	79,536	-4.6	79,427	75,707	-4.7

*Revised data

Graph 2
Percentage distribution of pupils enrolled in Kindergartens, by NUTS 2 Region (public / private), school year 2015/2016



B. PRIMARY SCHOOLS

Tables 4 and 5 present data on the number of primary schools, teaching staff and pupils enrolled.

Tables 4. School Units and Teaching Staff² by Type of School Unit and NUTS 2 Region (Primary Schools)

<i>By Type of School Unit</i>						
School Units	Number of School Units			Teaching Staff		
	2014/15*	2015/16	Change (%)	2014/15*	2015/16	Change (%)
Public³	4,398	4,384	-0.3	62,446	65,229	4.5
Private	163	163	0.0	3,032	3,150	3.9
TOTAL	4,561	4,547	-0.3	65,478	68,379	4.4
<i>By Region</i>						
NUTS 2 Region	Number of School Units			Teaching Staff		
	2014/15*	2015/16	Change (%)	2014/15*	2015/16	Change (%)
Anatoliki Makedonia & Thraki	368	360	-2.2	3,965	4,163	5.0
Kentriki Makedonia	761	761	0.0	11,718	12,477	6.5
Dytiki Makedonia	155	154	-0.6	1,934	2,038	5.4
Thessalia	363	361	-0.6	4,435	4,664	5.2
Ipeiros	195	195	0.0	2,121	2,207	4.1
Ionia Nisia	105	105	0.0	1,459	1,528	4.7
Dytiki Ellada	401	399	-0.5	4,403	4,568	3.7
Stereia Ellada	302	300	-0.7	3,313	3,446	4.0
Peloponnisos	269	267	-0.7	3,242	3,383	4.3
Attiki	999	1,004	0.5	20,758	21,285	2.5
Voreio Aigaio	136	136	0.0	1,429	1,526	6.8
Notio Aigaio	184	184	0.0	2,302	2,312	0.4
Kriti	323	321	-0.6	4,399	4,782	8.7
TOTAL	4,561	4,547	-0.3	65,478	68,379	4.4

*Revised data

² Teaching staff includes teachers classified as absent. "Absent teachers" are the teachers with a fixed post in the school unit, who are absent for more than 20 days (due to illness, training, maternity leave, etc) and their replacement is pending, as well as the teachers who are seconded to other administrative posts of the Ministry of Education, Research and Religious Affairs or elsewhere.

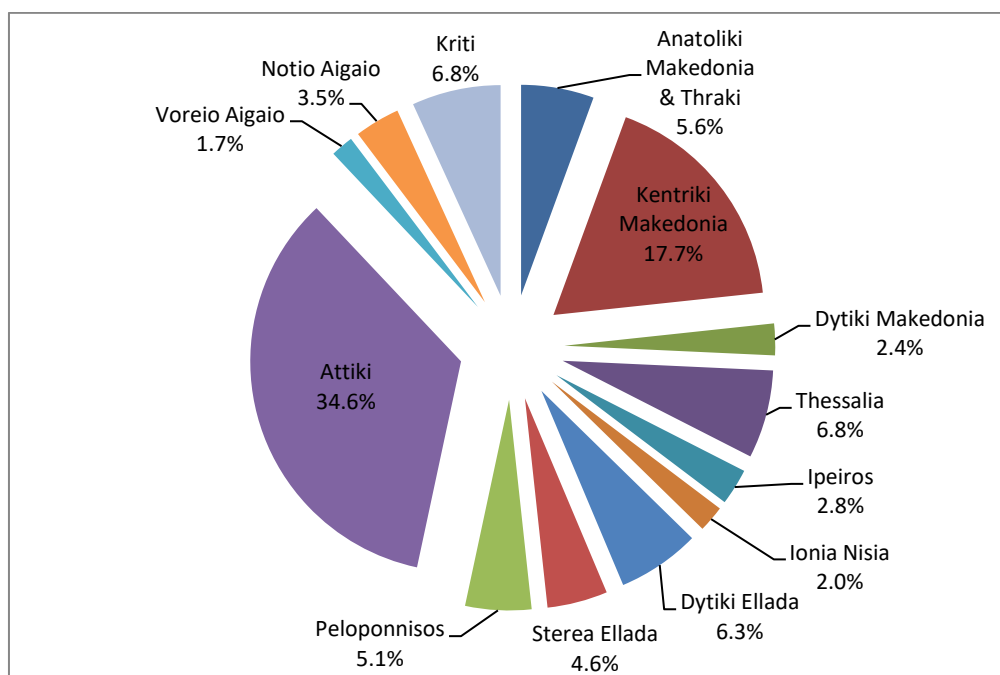
³ The increase of the teaching staff in public school units is due to the employment of part-time teachers.

Table 5. Pupils enrolled and Graduates by Type of School Unit and NUTS 2 Region (Primary Schools)

<i>By Type of School Unit</i>						
School Units	Pupils enrolled			Graduates		
	2014/15*	2015/16	Change (%)	2014/15*	2015/16	Change (%)
Public	606,571	607,811	0.2	96,198	96,242	0.0
Private	33,430	34,896	4.4	5,440	5,529	1.6
TOTAL	640,001	642,707	0.4	101,638	101,771	0.1
<i>By Region</i>						
NUTS 2 Region	Pupils enrolled			Graduates		
	2014/15*	2015/16	Change (%)	2014/15*	2015/16	Change (%)
Anatoliki Makedonia & Thraki	36,251	35,908	-0.9	5,696	5,679	-0.3
Kentriki Makedonia	113,897	113,886	0.0	18,122	18,034	-0.5
Dytiki Makedonia	15,784	15,599	-1.2	2,708	2,535	-6.4
Thessalia	43,617	43,509	-0.2	6,949	6,849	-1.4
Ipeiros	17,664	17,932	1.5	2,708	2,855	5.4
Ionia Nisia	12,774	13,008	1.8	1,982	2,111	6.5
Dytiki Ellada	41,089	40,721	-0.9	6,635	6,603	-0.5
Stereia Ellada	30,056	29,765	-1.0	4,942	4,775	-3.4
Peloponnisos	32,790	32,605	-0.6	5,192	5,157	-0.7
Attiki	219,767	222,426	1.2	34,518	34,938	1.2
Voreio Aigaio	11,072	11,203	1.2	1,791	1,782	-0.5
Notio Aigaio	21,933	22,292	1.6	3,551	3,528	-0.6
Kriti	43,307	43,853	1.3	6,844	6,925	1.2
TOTAL	640,001	642,707	0.4	101,638	101,771	0.1

*Revised data

Graph 3
Percentage distribution of pupils enrolled in Primary Schools
by NUTS 2 Region school year 2015/2016



EXPLANATORY NOTES

Surveys on Pre-Primary and Primary Education Pre-primary and Primary Education includes Kindergartens and Primary Schools. The relevant surveys are conducted on a yearly basis, with the aim of collecting data on the number of pupils enrolled, the school units and the number of teaching staff.

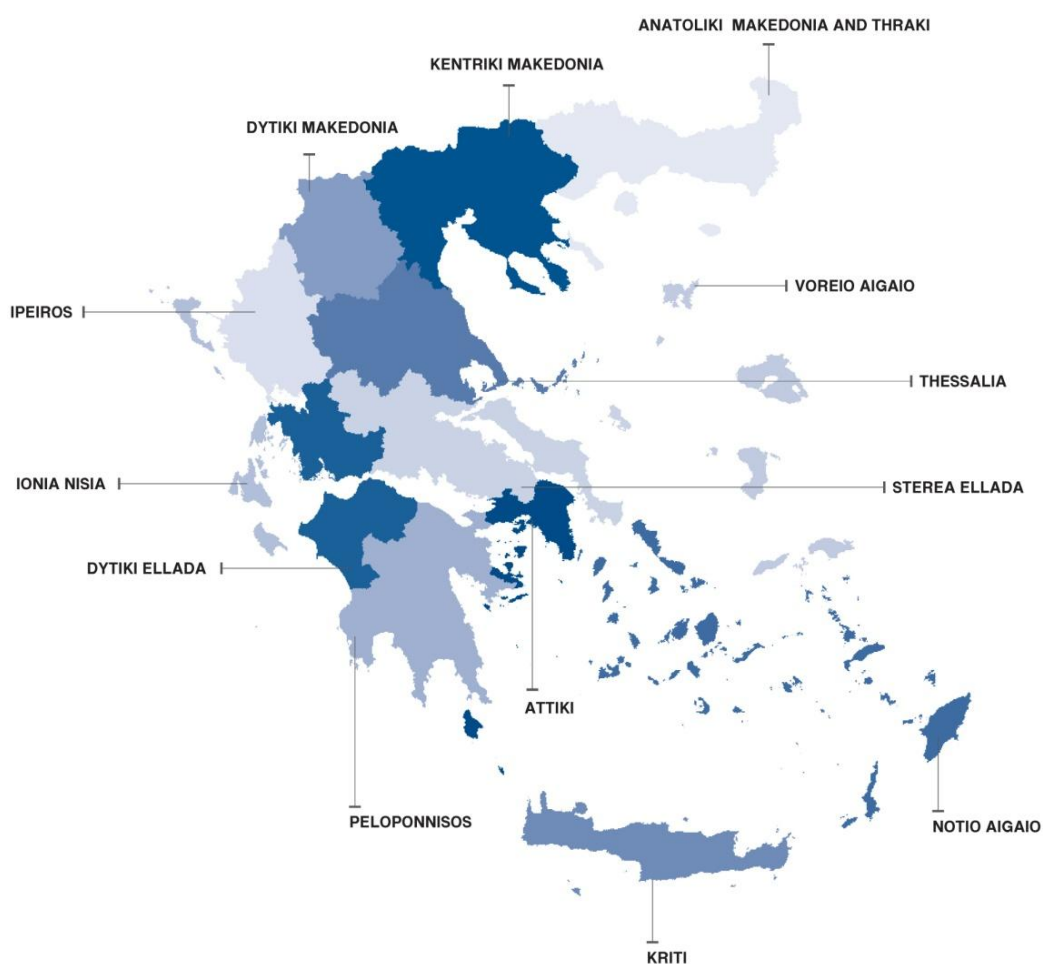
Legal Framework The surveys are conducted by virtue of Regulations (EU) No 452/2008 and 912/2013 of the European Parliament and of the Council.

Statistical Units The statistical units are the school units.

Coverage Greece total.

Geographical classification The geographical classification is based on Nomenclature of Territorial Units for Statistics.

Map of the 13 Regions (NUTS 2) of Greece



Dissemination of results	The data are posted on a yearly basis on the website of ELSTAT and are published in a relevant Press Release.
Reference period	The data of the surveys refer to the end of school year 2015/2016. For comparability reasons, the data of the end of the previous school year 2014/2015 are also provided. Part of the data for the school year 2014/15 have been revised in this Press Release, in comparison with the Press Release published on 18/10/2016.
Methodology and coverage	<p>Until the school year 2013/2014, the surveys on Pre-Primary and Primary Education used to be census, yearly surveys and they were conducted by ELSTAT.</p> <p>For the school year 2014/2015 onwards, data of these surveys are collected as follows:</p> <ul style="list-style-type: none"> – As regards public school units, the data are extracted from the “live” e-platform “MySchool” of the Ministry of Education, Research and Religious Affairs. – As regards private school units, data are collected from the questionnaires that are sent to the relevant school units.
References	More information, such as tables with the survey results, samples of questionnaires, etc, on the Survey on Pre-Primary and Primary Education can be found on the webpage of ELSTAT www.statistics.gr and at the link: “Statistics” / Population and Social Conditions / Education / Primary Education / Kindergartens (Beginning – End of school year) or Primary Schools (Beginning – End of school year)”.