



## PRESS RELEASE

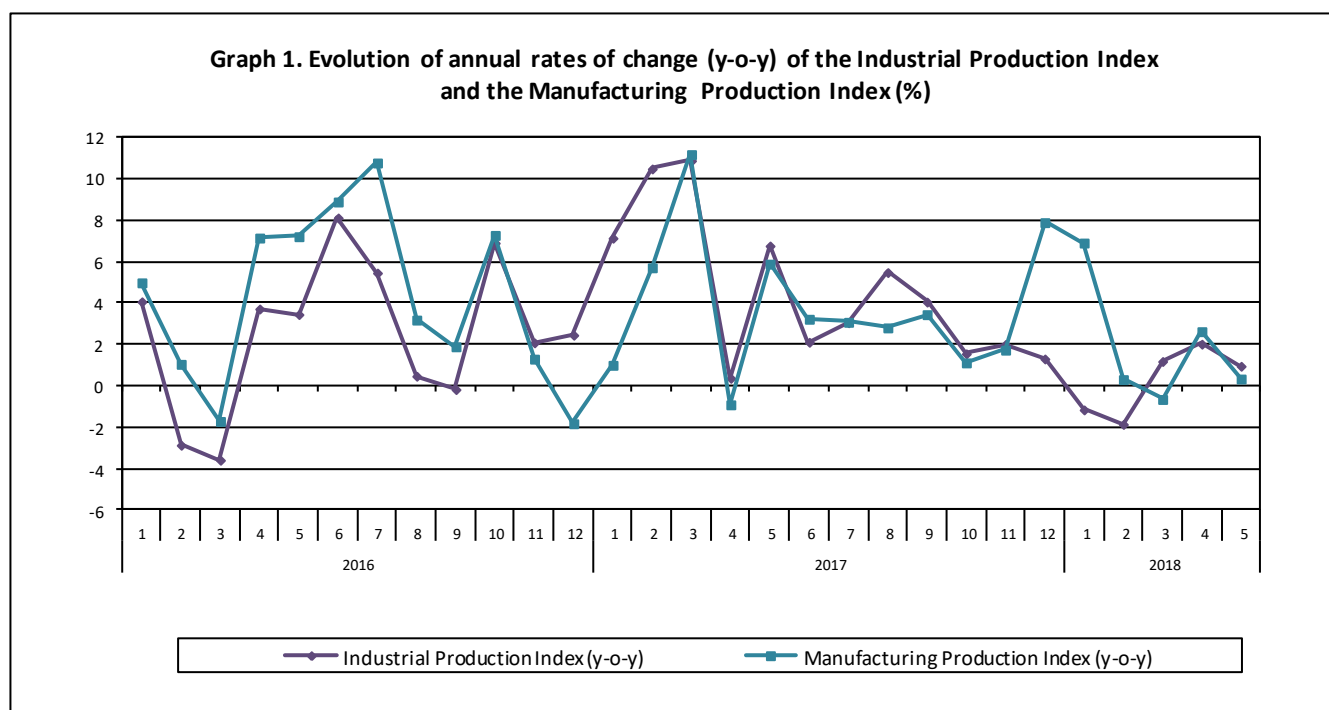
### INDUSTRIAL PRODUCTION INDEX: May 2018, y-o-y increase of 1.0%

The evolution of the Industrial Production Index (IPI) with base year 2010=100.0 in May 2018, on the basis of provisional and working day adjusted data, is as follows:

The Overall Industrial Production Index in May 2018 recorded an increase of 1.0% compared with May 2017. The corresponding annual rate of change of the Overall IPI in May 2017 was 6.8% (Table 1).

The average Overall Industrial Production Index for the period from January to May 2018 recorded an increase of 0.2% compared with the average IPI of the period from January to May 2017 (Table 2).

The seasonally adjusted Overall Industrial Production Index in May 2018 recorded an increase of 0.5% compared with April 2018 (Table 4).



#### Information:

Economic and Short-Term Indices Division  
Production Indices Section

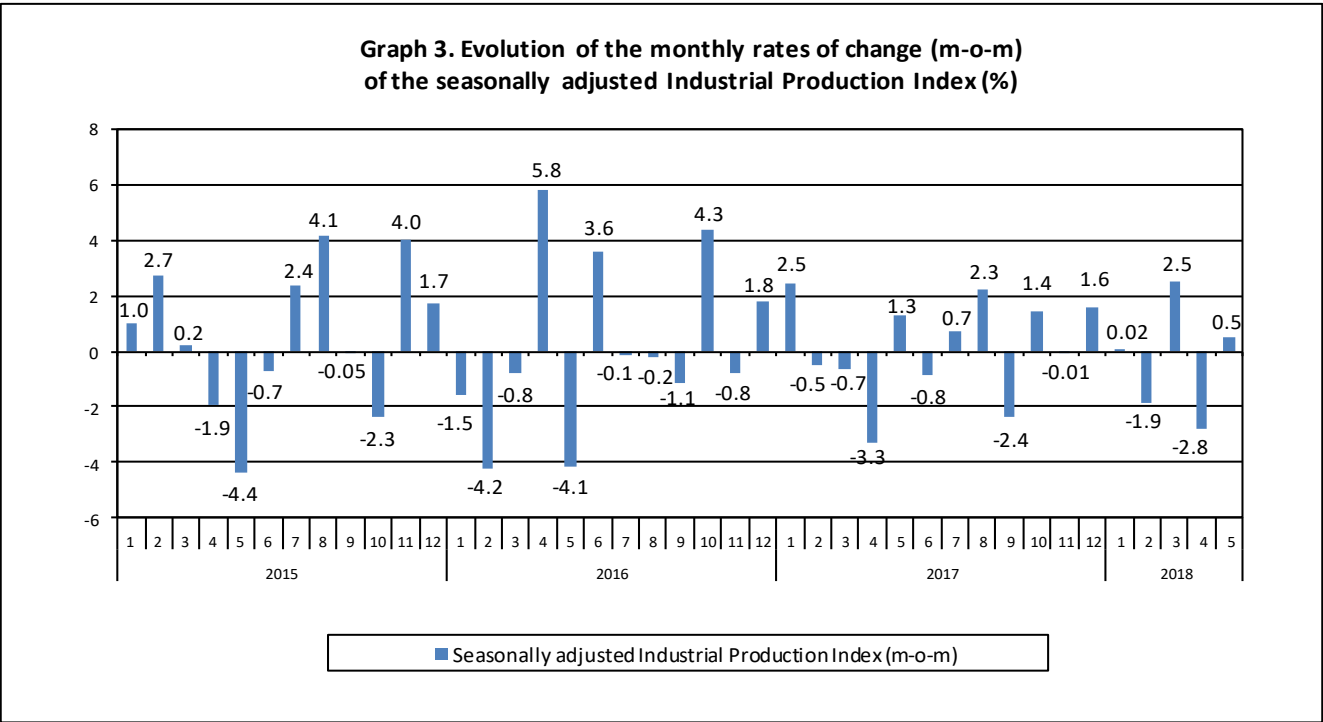
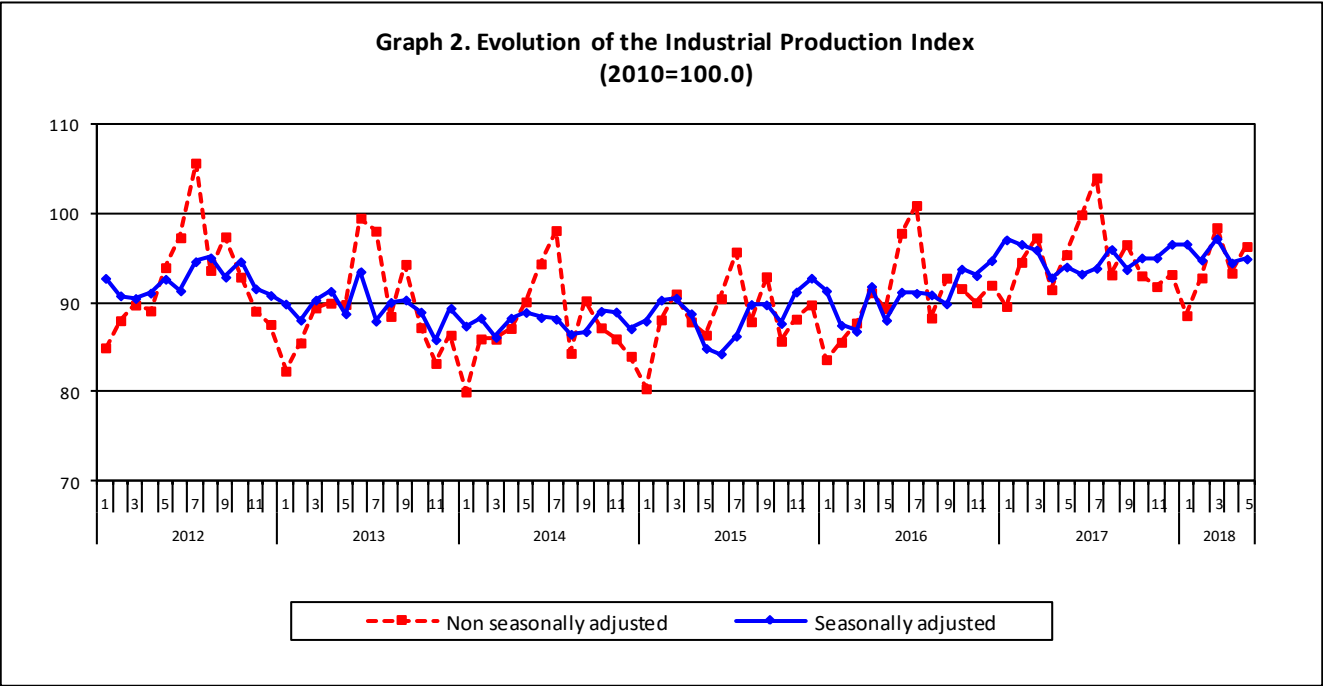
Diamantaki Aikaterini, Thymoglou Georgia

Tel: +30 213 135 2122, +30 213 135 2737

Fax: +30 213 135 2738

E-mail: [a.diamantaki@statistics.gr](mailto:a.diamantaki@statistics.gr), [g.thymoglou@statistics.gr](mailto:g.thymoglou@statistics.gr)

The following graphs depict the evolution of the seasonally and non-seasonally adjusted Overall Industrial Production Index, as well as the monthly rates of change (m-o-m) of the seasonally adjusted index.



It should be noted that the time series with the seasonally adjusted indices is recalculated every time a new observation is added in the time series. Therefore, the seasonally adjusted data differ from the data published in the previous Press Release.

## Evolution of the Industrial Production Index in May 2018

### I. Annual changes: May 2018/ May 2017 (Table 1)

The 1.0% increase of the working day adjusted Overall IPI in May 2018, compared with the corresponding index in May 2017, is due to the annual changes of the sub-indices in the following industrial sections:

**1. Increase of:**

- 6.8% in the Mining and Quarrying Production Index. The increase was the result of the annual changes of the sub-indices in the following 2-digit divisions: extraction of crude petroleum and natural gas, other mining and quarrying products.
- 0.3% in the Manufacturing Production Index. The increase was the result of the annual changes of the sub-indices in the following 2-digit divisions: beverages, basic pharmaceutical products and pharmaceutical preparations, furniture.
- 2.7% in the Electricity Production Index.

**2. Decrease of:**

- 1.1% in the Water Supply Production Index.

### II. Rates of change of the average index in the period January – May 2018 compared with the corresponding index of the period January – May 2017 (Table 2)

The 0.2% increase of the working day adjusted Overall IPI in the 5-month period January – May 2018, compared with the corresponding index in January – May 2017, is due to the corresponding rates of change of the sub-indices in the following industrial sections:

**1. Increase of:**

- 1.7% in the Manufacturing Production Index.

**2. Decrease of:**

- 1.2% in the Mining and Quarrying Production Index.
- 4.3% in the Electricity Production Index.
- 2.2% in the Water Supply Production Index

### III. Monthly changes: May 2018/ April 2018 (Table 4)

The 0.5% increase of the seasonally adjusted Overall IPI in May 2018, compared with the corresponding index in April 2018, is due to the monthly changes of the sub-indices in the following industrial sections:

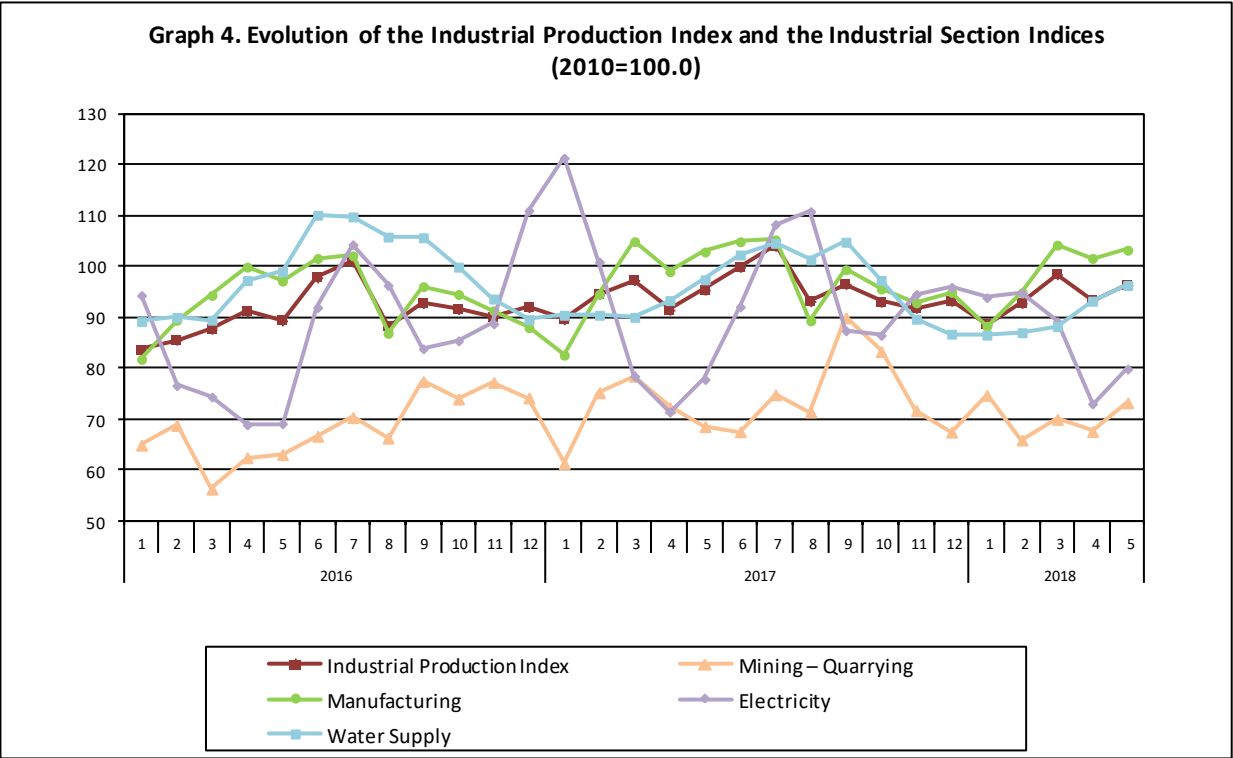
**1. Increase of:**

- 4.0% in the Mining and Quarrying Production Index.
- 0.3% in the Manufacturing Production Index.
- 5.8% in the Electricity Production Index.

**2. Decrease of:**

- 2.5% in the Water Supply Production Index.

The following graph depicts the evolution of the Industrial Production Index and the Industrial Sections Indices.



**Table 1. Annual rates of change of the Industrial Production Index***(Working day adjusted data, according to the real number of working days)***Base year: 2010=100.0**

Code		Division	May			Rate of change (%)	
			2018*	2017	2016	2018/2017	2017/2016
OVERALL INDEX			96.33	95.41	89.36	1.0	6.8
B	MINING AND QUARRYING		73.20	68.53	63.05	6.8	8.7
05	Mining of coal and lignite		54.73	53.31	42.35	2.7	25.9
06	Extraction of crude petroleum and natural gas		158.08	91.94	177.10	71.9	-48.1
07	Mining of metal ores		88.95	91.85	85.86	-3.2	7.0
08	Other mining and quarrying products		99.95	91.10	89.21	9.7	2.1
C	MANUFACTURING		103.23	102.88	97.15	0.3	5.9
10	Food		99.36	99.80	96.96	-0.4	2.9
11	Beverages		108.39	100.11	109.36	8.3	-8.5
12	Tobacco products		64.51	116.13	121.36	-44.5	-4.3
13	Textiles		69.37	71.83	74.27	-3.4	-3.3
14	Wearing apparel		49.65	47.96	60.08	3.5	-20.2
15	Leather and related products		47.66	54.97	44.85	-13.3	22.6
16	Wood and cork		44.44	49.65	51.82	-10.5	-4.2
17	Paper and paper products		107.56	102.99	101.70	4.4	1.3
18	Printing and recording services		51.06	54.70	51.49	-6.7	6.3
19	Coke and refined petroleum products		131.34	138.59	133.51	-5.2	3.8
20	Chemicals and chemical products		117.01	111.89	109.40	4.6	2.3
21	Basic pharmaceutical products and pharmaceutical preparations		151.83	115.83	99.47	31.1	16.5
22	Rubber and plastic products		100.84	100.40	92.98	0.4	8.0
23	Other non-metallic mineral products		69.83	67.91	70.55	2.8	-3.7
24	Basic metals		150.64	147.15	102.42	2.4	43.7
25	Fabricated metal products		102.01	100.99	84.26	1.0	19.9
26	Computers, electronic and optical products		124.36	129.86	79.33	-4.2	63.7
27	Electrical equipment		56.24	85.39	81.13	-34.1	5.3
28	Machinery and equipment n. e. c.		108.89	104.73	108.48	4.0	-3.5
29	Motor vehicles, trailers and semi-trailers		91.84	124.11	87.18	-26.0	42.4
30	Other transport equipment		52.11	52.96	80.97	-1.6	-34.6
31	Furniture		67.69	59.31	62.14	14.1	-4.6
32	Other manufactured goods		102.69	97.55	101.01	5.3	-3.4
33	Repair and installation services of machinery and equipment		51.16	50.37	44.41	1.6	13.4
D	ELECTRICITY		79.87	77.79	69.09	2.7	12.6
35	Production and distribution of electricity		79.87	77.79	69.09	2.7	12.6
E	WATER SUPPLY		96.32	97.42	98.98	-1.1	-1.6
36	Treatment and supply services of natural water		96.32	97.42	98.98	-1.1	-1.6
MAIN INDUSTRIAL GROUPINGS							
1	Energy		93.36	93.92	87.38	-0.6	7.5
2	Intermediate goods		100.79	100.53	90.31	0.3	11.3
3	Capital goods		75.44	73.20	67.86	3.1	7.9
4	Consumer Durables		65.62	68.87	62.77	-4.7	9.7
5	Consumer Non-Durables		102.80	99.23	97.65	3.6	1.6

\* Provisional data

*Note: The indices are rounded up to two decimal figures when published and percentage changes up to one decimal figure when published.*

**Table 2. Average indices of the period January – May and rates of change (%) of the Industrial Production Index**  
*(Working day adjusted data, according to the real number of working days)*

Base year: 2010=100.0

Code		Division	Average indices of the period Jan.-May			Rate of change (%)	
			2018*	2017	2016	2018/2017	2017/2016
OVERALL INDEX			93.89	93.66	87.48	0.2	7.1
B	MINING AND QUARRYING		70.26	71.15	63.07	-1.2	12.8
05	Mining of coal and lignite		62.33	66.98	50.25	-6.9	33.3
06	Extraction of crude petroleum and natural gas		157.95	106.14	129.70	48.8	-18.2
07	Mining of metal ores		84.76	74.51	81.06	13.8	-8.1
08	Other mining and quarrying products		73.75	75.71	78.17	-2.6	-3.2
C	MANUFACTURING		98.45	96.79	92.53	1.7	4.6
10	Food		93.84	93.19	92.18	0.7	1.1
11	Beverages		85.52	79.70	90.24	7.3	-11.7
12	Tobacco products		61.42	99.65	135.38	-38.4	-26.4
13	Textiles		66.46	68.54	69.25	-3.0	-1.0
14	Wearing apparel		47.68	47.74	50.56	-0.1	-5.6
15	Leather and related products		49.67	52.37	52.37	-5.2	0.0
16	Wood and cork		39.86	40.92	41.05	-2.6	-0.3
17	Paper and paper products		103.19	98.15	97.84	5.1	0.3
18	Printing and recording services		47.35	47.92	52.86	-1.2	-9.3
19	Coke and refined petroleum products		136.96	137.25	126.60	-0.2	8.4
20	Chemicals and chemical products		111.98	108.68	109.07	3.0	-0.4
21	Basic pharmaceutical products and pharmaceutical preparations		150.48	126.24	112.26	19.2	12.5
22	Rubber and plastic products		97.25	96.40	92.62	0.9	4.1
23	Other non-metallic mineral products		61.59	61.93	60.76	-0.6	1.9
24	Basic metals		141.19	139.71	106.97	1.1	30.6
25	Fabricated metal products		88.81	88.45	79.37	0.4	11.4
26	Computers, electronic and optical products		113.30	115.51	91.46	-1.9	26.3
27	Electrical equipment		70.96	75.71	70.81	-6.3	6.9
28	Machinery and equipment n. e. c.		103.82	92.45	91.58	12.3	1.0
29	Motor vehicles, trailers and semi-trailers		84.20	83.77	40.73	0.5	105.6
30	Other transport equipment		53.80	57.49	74.08	-6.4	-22.4
31	Furniture		57.76	47.09	50.65	22.7	-7.0
32	Other manufactured goods		91.41	87.19	88.95	4.8	-2.0
33	Repair and installation services of machinery and equipment		51.92	51.24	45.97	1.3	11.5
D	ELECTRICITY		86.14	89.98	76.65	-4.3	17.4
35	Production and distribution of electricity		86.14	89.98	76.65	-4.3	17.4
E	WATER SUPPLY		90.26	92.34	92.99	-2.2	-0.7
36	Treatment and supply services of natural water		90.26	92.34	92.99	-2.2	-0.7
MAIN INDUSTRIAL GROUPINGS							
1	Energy		98.37	100.92	89.50	-2.5	12.8
2	Intermediate goods		93.69	92.90	86.07	0.9	7.9
3	Capital goods		71.22	68.57	61.13	3.9	12.2
4	Consumer Durables		59.60	56.95	54.14	4.7	5.2
5	Consumer Non-Durables		94.94	92.02	93.87	3.2	-2.0

\* Provisional data

*Note: The indices are rounded up to two decimal figures when published and percentage changes up to one decimal figure when published.*

**Table 3. Monthly rate of change of the Industrial Production Index***(Working day adjusted data, according to the real number of working days)*

Base year: 2010=100.0

Code	Division	May 2018*	April 2018**	Rate of change (%) May 2018/ Apr. 2018
<b>OVERALL INDEX</b>		<b>96.33</b>	<b>93.33</b>	<b>3.2</b>
<b>B</b>	<b>MINING AND QUARRYING</b>	<b>73.20</b>	<b>67.57</b>	<b>8.3</b>
05	Mining of coal and lignite	54.73	54.08	1.2
06	Extraction of crude petroleum and natural gas	158.08	181.90	-13.1
07	Mining of metal ores	88.95	88.60	0.4
08	Other mining and quarrying products	99.95	78.31	27.6
<b>C</b>	<b>MANUFACTURING</b>	<b>103.23</b>	<b>101.62</b>	<b>1.6</b>
10	Food	99.36	95.00	4.6
11	Beverages	108.39	97.61	11.0
12	Tobacco products	64.51	63.44	1.7
13	Textiles	69.37	68.30	1.6
14	Wearing apparel	49.65	59.18	-16.1
15	Leather and related products	47.66	52.57	-9.3
16	Wood and cork	44.44	48.04	-7.5
17	Paper and paper products	107.56	100.79	6.7
18	Printing and recording services	51.06	47.90	6.6
19	Coke and refined petroleum products	131.34	134.37	-2.3
20	Chemicals and chemical products	117.01	117.04	-0.02
21	Basic pharmaceutical products and pharmaceutical preparations	151.83	162.86	-6.8
22	Rubber and plastic products	100.84	99.20	1.7
23	Other non-metallic mineral products	69.83	67.43	3.6
24	Basic metals	150.64	133.21	13.1
25	Fabricated metal products	102.01	91.02	12.1
26	Computers, electronic and optical products	124.36	106.07	17.2
27	Electrical equipment	56.24	74.48	-24.5
28	Machinery and equipment n. e. c.	108.89	119.48	-8.9
29	Motor vehicles, trailers and semi-trailers	91.84	88.05	4.3
30	Other transport equipment	52.11	70.42	-26.0
31	Furniture	67.69	73.04	-7.3
32	Other manufactured goods	102.69	109.66	-6.4
33	Repair and installation services of machinery and equipment	51.16	61.02	-16.2
<b>D</b>	<b>ELECTRICITY</b>	<b>79.87</b>	<b>73.00</b>	<b>9.4</b>
35	Production and distribution of electricity	79.87	73.00	9.4
<b>E</b>	<b>WATER SUPPLY</b>	<b>96.32</b>	<b>93.22</b>	<b>3.3</b>
36	Treatment and supply services of natural water	96.32	93.22	3.3
<b>MAIN INDUSTRIAL GROUPINGS</b>				
1	Energy	93.36	90.26	3.4
2	Intermediate goods	100.79	94.72	6.4
3	Capital goods	75.44	82.52	-8.6
4	Consumer Durables	65.62	68.67	-4.4
5	Consumer Non-Durables	102.80	100.24	2.6

\* Provisional data    \*\*Revised data

Note: The indices are rounded up to two decimal figures when published and percentage changes up to one decimal figure when published.

**Table 4. Monthly rate of change of the seasonally adjusted Industrial Production Index**

Base year: 2010=100.0

Code	Division	May 2018*	April 2018**	Rate of change (%) May 2018/ Apr. 2018
<b>OVERALL INDEX</b>		<b>94.93</b>	<b>94.47</b>	<b>0.5</b>
<b>B</b>	<b>MINING AND QUARRYING</b>	<b>72.40</b>	<b>69.63</b>	<b>4.0</b>
05	Mining of coal and lignite	59.53	58.45	1.9
06	Extraction of crude petroleum and natural gas	159.67	183.73	-13.1
07	Mining of metal ores	82.53	84.22	-2.0
08	Other mining and quarrying products	89.89	79.79	12.7
<b>C</b>	<b>MANUFACTURING</b>	<b>98.71</b>	<b>98.42</b>	<b>0.3</b>
10	Food	96.81	96.29	0.5
11	Beverages	86.36	81.72	5.7
12	Tobacco products	61.73	65.48	-5.7
13	Textiles	62.23	62.84	-1.0
14	Wearing apparel	44.83	46.49	-3.6
15	Leather and related products	44.15	43.56	1.3
16	Wood and cork	40.19	46.45	-13.5
17	Paper and paper products	103.51	100.21	3.3
18	Printing and recording services	48.35	43.17	12.0
19	Coke and refined petroleum products	131.97	137.70	-4.2
20	Chemicals and chemical products	105.91	101.85	4.0
21	Basic pharmaceutical products and pharmaceutical preparations	158.41	149.74	5.8
22	Rubber and plastic products	94.03	94.30	-0.3
23	Other non-metallic mineral products	63.89	65.68	-2.7
24	Basic metals	143.39	134.58	6.5
25	Fabricated metal products	91.24	90.41	0.9
26	Computers, electronic and optical products	123.24	109.20	12.9
27	Electrical equipment	50.88	73.12	-30.4
28	Machinery and equipment n. e. c.	104.76	108.16	-3.1
29	Motor vehicles, trailers and semi-trailers	98.22	115.36	-14.9
30	Other transport equipment	58.11	62.37	-6.8
31	Furniture	59.70	64.01	-6.7
32	Other manufactured goods	95.09	93.18	2.0
33	Repair and installation services of machinery and equipment	61.01	61.11	-0.2
<b>D</b>	<b>ELECTRICITY</b>	<b>89.27</b>	<b>84.40</b>	<b>5.8</b>
35	Production and distribution of electricity	89.27	84.40	5.8
<b>E</b>	<b>WATER SUPPLY</b>	<b>94.12</b>	<b>96.51</b>	<b>-2.5</b>
36	Treatment and supply services of natural water	94.12	96.51	-2.5
<b>MAIN INDUSTRIAL GROUPINGS</b>				
1	Energy	99.67	99.89	-0.2
2	Intermediate goods	93.07	92.20	1.0
3	Capital goods	76.75	81.32	-5.6
4	Consumer Durables	58.36	61.32	-4.8
5	Consumer Non-Durables	96.31	93.97	2.5

*Notes:*

1. The indices are rounded up to two decimal figures when published and percentage changes up to one decimal figure when published.
2. The whole time-series with seasonally adjusted indices is recalculated every time a new observation is added in the time-series.



**Table 5. Evolution of the Overall Industrial Production Index**

*(Working day adjusted data, according to the real number of working days)*

**Base year: 2010=100.0**

Year and month	Overall Index	Monthly rate of change (%)	Annual rate of change (%)	12-month average indices (moving average)	Rate of change of the 12-month average indices (%)
<b>2016:</b>					
1	83.61	-6.9	4.1	88.96	1.3
2	85.56	2.3	-2.9	88.75	0.9
3	87.73	2.5	-3.6	88.48	0.1
4	91.13	3.9	3.7	88.75	0.3
5	89.36	-1.9	3.5	89.00	1.0
6	97.82	9.5	8.1	89.61	2.0
7	100.94	3.2	5.5	90.05	2.8
8	88.29	-12.5	0.5	90.08	2.5
9	92.77	5.1	-0.2	90.07	2.2
10	91.60	-1.3	6.9	90.56	2.9
11	90.01	-1.7	2.1	90.72	2.8
12	91.98	2.2	2.5	90.90	2.5
<b>Annual average</b>	<b>90.90</b>	–	–	<b>90.90</b>	<b>2.5</b>
<b>2017:</b>					
1	89.59	-2.6	7.1	91.40	2.7
2	94.55	5.5	10.5	92.15	3.8
3	97.29	2.9	10.9	92.94	5.0
4	91.47	-6.0	0.4	92.97	4.8
5	95.41	4.3	6.8	93.48	5.0
6	99.89	4.7	2.1	93.65	4.5
7	104.03	4.1	3.1	93.91	4.3
8	93.14	-10.5	5.5	94.31	4.7
9	96.54	3.7	4.1	94.62	5.1
10	93.03	-3.6	1.6	94.74	4.6
11	91.82	-1.3	2.0	94.89	4.6
12	93.18	1.5	1.3	94.99	4.5
<b>Annual average</b>	<b>94.99</b>	–	–	<b>94.99</b>	<b>4.5</b>
<b>2018:</b>					
1	88.56	-5.0	-1.2	94.91	3.8
2	92.79	4.8	-1.9	94.76	2.8
3	98.45	6.1	1.2	94.86	2.1
4**	93.33	-5.2	2.0	95.01	2.2
5*	96.33	3.2	1.0	95.09	1.7

\* Provisional data      \*\* Revised data

*Note: The indices are rounded up to two decimal figures when published and percentage changes up to one decimal figure when published.*

**Table 6. Monthly evolution of the seasonally adjusted Overall Industrial Production Index and Main Industrial Groupings**

**Base year: 2010=100.0**

Year and month	Overall Index		Energy		Intermediate goods		Capital goods		Consumer durables		Consumer non-durables	
	Index	Monthly rate of change (%)	Index	Monthly rate of change (%)	Index	Monthly rate of change (%)	Index	Monthly rate of change (%)	Index	Monthly rate of change (%)	Index	Monthly rate of change (%)
2016:	1	91.34 -1.5	98.87 -1.4	84.29 -2.4	63.69 -11.2	54.26 -21.5	95.82 1.5					
	2	87.47 -4.2	88.97 -10.0	86.10 2.2	65.39 2.7	51.23 -5.6	93.78 -2.1					
	3	86.80 -0.8	87.25 -1.9	85.89 -0.2	67.09 2.6	53.55 4.5	93.44 -0.4					
	4	91.83 5.8	94.80 8.7	89.04 3.7	69.24 3.2	58.25 8.8	97.39 4.2					
	5	88.03 -4.1	93.16 -1.7	83.36 -6.4	69.20 -0.1	56.33 -3.3	91.37 -6.2					
	6	91.20 3.6	92.84 -0.3	92.75 11.3	73.31 5.9	56.60 0.5	93.53 2.4					
	7	91.06 -0.1	96.55 4.0	85.93 -7.4	71.85 -2.0	59.06 4.3	94.43 1.0					
	8	90.89 -0.2	96.92 0.4	88.86 3.4	77.81 8.3	60.64 2.7	89.11 -5.6					
	9	89.88 -1.1	98.25 1.4	85.69 -3.6	75.06 -3.5	55.70 -8.2	87.47 -1.8					
	10	93.79 4.3	103.21 5.0	87.79 2.5	75.02 -0.1	56.77 1.9	92.66 5.9					
	11	93.05 -0.8	101.08 -2.1	88.11 0.4	77.10 2.8	55.33 -2.5	92.29 -0.4					
	12	94.73 1.8	109.80 8.6	85.62 -2.8	72.10 -6.5	54.89 -0.8	89.64 -2.9					
Annual average	90.84	96.81	86.95	71.41	56.05	92.58						
2017:	1	97.07 2.5	113.32 3.2	90.86 6.1	75.20 4.3	51.21 -6.7	87.77 -2.1					
	2	96.56 -0.5	105.87 -6.6	93.26 2.6	80.38 6.9	57.14 11.6	92.65 5.6					
	3	95.94 -0.7	100.91 -4.7	95.10 2.0	76.98 -4.2	60.71 6.2	96.11 3.7					
	4	92.80 -3.3	100.72 -0.2	90.26 -5.1	69.01 -10.4	54.54 -10.2	91.73 -4.6					
	5	94.02 1.3	100.23 -0.5	92.83 2.9	74.66 8.2	61.24 12.3	92.73 1.1					
	6	93.22 -0.8	99.37 -0.9	91.71 -1.2	73.98 -0.9	57.51 -6.1	92.50 -0.2					
	7	93.87 0.7	98.02 -1.4	92.91 1.3	79.98 8.1	55.73 -3.1	94.40 2.1					
	8	95.99 2.3	101.10 3.2	99.57 7.2	73.10 -8.6	53.64 -3.7	93.11 -1.4					
	9	93.72 -2.4	99.67 -1.4	93.06 -6.5	72.38 -1.0	55.40 3.3	93.09 -0.03					
	10	95.04 1.4	102.13 2.5	92.75 -0.3	74.90 3.5	56.86 2.6	94.08 1.1					
	11	95.04 -0.01	105.23 3.0	90.99 -1.9	73.79 -1.5	55.83 -1.8	91.66 -2.6					
	12	96.57 1.6	102.86 -2.3	92.56 1.7	75.24 2.0	65.53 17.4	98.17 7.1					
Annual average	94.99	102.45	92.99	74.97	57.11	93.17						
2018:	1	96.60 0.02	102.41 -0.4	95.82 3.5	78.38 4.2	60.36 -7.9	95.45 -2.8					
	2	94.79 -1.9	101.66 -0.7	89.88 -6.2	75.08 -4.2	60.97 1.0	96.25 0.8					
	3	97.20 2.5	104.96 3.3	95.69 6.5	76.38 1.7	59.34 -2.7	94.68 -1.6					
	4	94.47 -2.8	99.89 -4.8	92.20 -3.7	81.32 6.5	61.32 3.3	93.97 -0.8					
	5	94.93 0.5	99.67 -0.2	93.07 1.0	76.75 -5.6	58.36 -4.8	96.31 2.5					

**Notes:**

1. The indices are rounded up to two decimal figures when published and percentage changes up to one decimal figure when published.
2. The whole time-series with seasonally adjusted indices is recalculated every time a new observation is added in the time-series.

## METHODOLOGICAL NOTES

<b>Generally</b>	The Industrial Production Index (IPI) is compiled since 1959.
<b>Purpose of the index</b>	The IPI is an important business cycle indicator, which shows the monthly activity in the Mining and Quarrying, Manufacturing, Electricity and Water Supply divisions. More specifically, the objective of the Industrial Production Index is to compare the magnitude (volume) of the output in the current month with the corresponding output in any given period which is considered as base period. The IPI shows the evolution of the value added of the production factors cost, at constant prices.
<b>Legal basis</b>	The compilation of the IPI is governed by Council Regulation (EC) No 1165/98 concerning short-term statistics. Furthermore, the IPI is governed by Regulation (EC) No 1893/2006 of the European Parliament and of the Council, by Commission Regulation (EC) No 656/2007 and by Council Regulation (EC) No 451/2008.
<b>Reference period</b>	Month.
<b>Base year</b>	2010=100.0.
<b>Revision</b>	The IPI is a fixed base index. Pursuant to the provisions of Council Regulation No 1165/98 concerning short-term statistics, the index is updated every five (5) years, in years ending in 0 or 5.
<b>Statistical classifications</b>	At the level of branches of economic activities, the classification NACE Rev.2 of Eurostat was used (Regulation No 1893/2006), while at the level of main industrial groups, the allocation of two-digit and three-digit NACE Rev. 2 headings to categories of aggregate classification was used, in accordance with Council Regulation No 656/2007. At product level, the classification CPA 2008 of Eurostat was used, according to Council Regulation No 451/2008.
<b>Geographical coverage</b>	The Index covers the whole Country.
<b>Coverage of economic activities</b>	The index covers all the sections of industry, the main industrial groups, all levels of economic activities (divisions, groups and classes) and the level of products.
<b>Statistical survey</b>	The data are collected from a sample of 1,338 enterprises. The survey covers 354 products and the measurement of the surveyed products is made in terms of output quantities or in terms of production value or turnover, according to the specific situation in each branch of economic activity.
<b>Seasonal adjustment</b>	Seasonal adjustment is the procedure followed to remove the impact of seasonality on the time-series (i.e. the impact of monthly effects, e.g. holidays, tourist period etc), in order to improve comparability over time. The method used is the TRAMO-SEATS method with the use of JDemetra+ 2.0.0. For the seasonal adjustment of the Industrial Production Index at 2-digit level of NACE Rev.2, at section level (B – Mining and Quarrying, C – Manufacturing, D – Electricity and E – Water Supply) and for the Main Industrial Groupings (MIGs), the direct approach is applied, namely each time-series is seasonally adjusted independently. For the overall Industrial Production Index, the indirect approach is applied, with the seasonally adjusted IPI being computed by aggregating the seasonally adjusted MIGs using appropriate weights.
<b>Publication of data</b>	The IPI with the new base year (2010) is released since August 2014, with June 2014 as the first reference month. Data with base year 2010=100.0 are available from January 2000 onwards.
<b>References</b>	More information about the methodology concerning the compilation and calculation of the index and for the time series is available on the website of the Hellenic Statistical Authority (ELSTAT) ( <a href="http://www.statistics.gr/en/statistics/-/publication/DKT21/-">http://www.statistics.gr/en/statistics/-/publication/DKT21/-</a> ).