



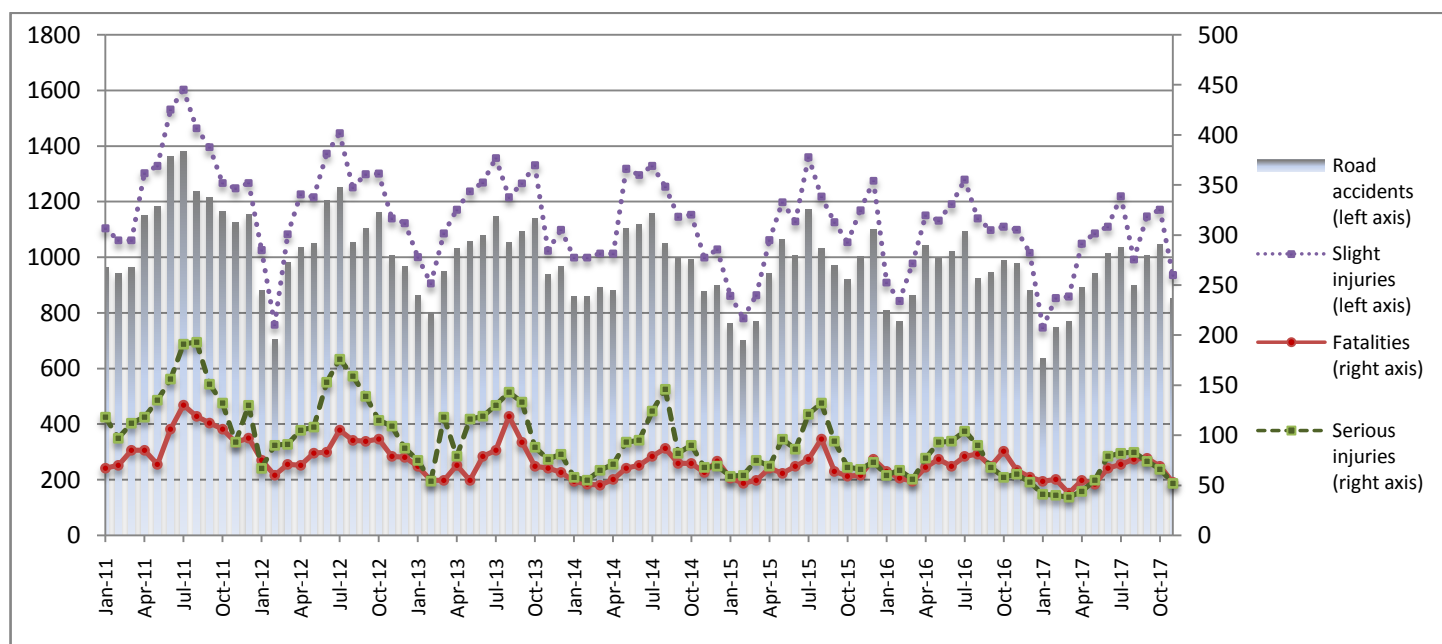
PRESS RELEASE

ROAD ACCIDENTS: November 2017

The Hellenic Statistical Authority (ELSTAT) announces provisional¹ data on Road Accidents for November 2017. In particular, the road traffic accidents which occurred in Greece, resulting in death or injury, decreased by 12.8% in comparison with the corresponding month of 2016 (853 road accidents in November 2017, against 978 road accidents in November 2016).

The casualties of the injury-causing accidents that occurred in November 2017 were as follows: 53 deaths, 52 serious injuries and 936 slight injuries. In contrast, in November 2016 the corresponding figures were: 65 deaths, 61 serious injuries and 1,099 slight injuries. Therefore, road accident casualties in November 2017 decreased by 18.5% for deaths, by 14.8% for serious and slight injuries.

**Graph 1: Road traffic accidents and casualties,
January 2011 - November 2017**



Provisional data: Mar 17 –Nov 17

Information:

Social Statistics Division
Justice and Public Order Statistics Section
D. Athanasopoulou
Tel: +30 213 1352767
Fax : +30 213 1352764
e-mail: d.athanasopoulou@statistics.gr

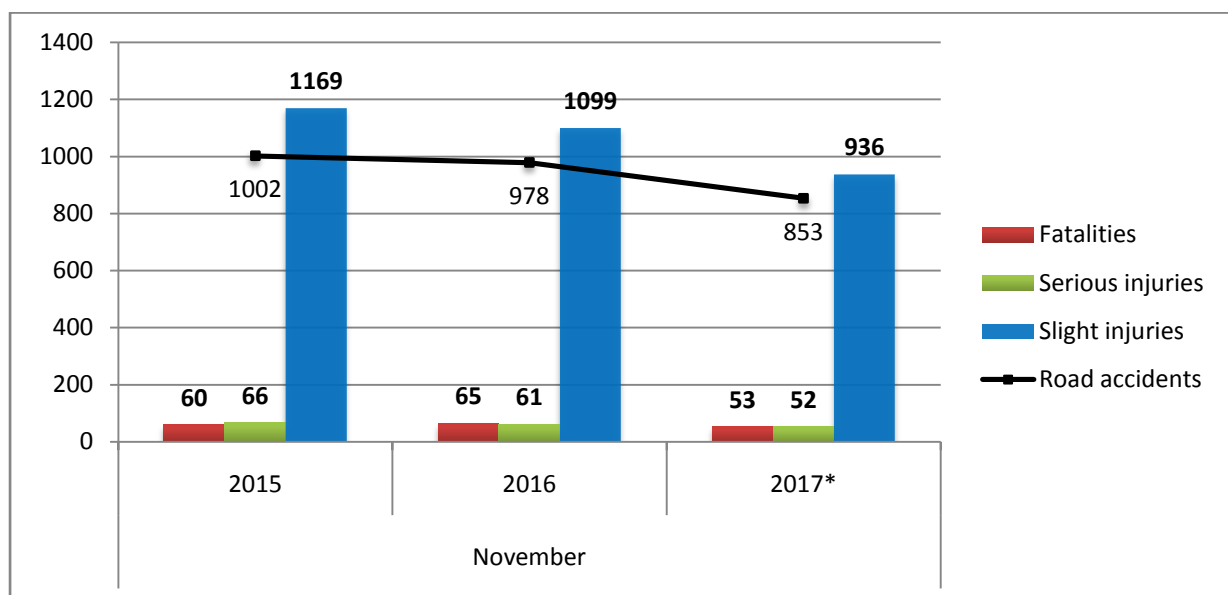
¹ Data for the reference year are provisional until the finalisation of the annual data, which become final 10 months after the end of the reference year. During these 10 months the provisional data are updated on the basis of the data of the Road Accident Forms which are transmitted to ELSTAT by Police Authorities.

Table 1: Road traffic accidents and casualties, November 2015-2017*

	November				
	2015	2016	2016/2015 (%)	2017*	2017*/2016 (%)
Road accidents	1,002	978	-2.4%	853	-12.8%
Fatalities	60	65	8.3%	53	-18.5%
Total injuries	1,235	1,160	-6.1%	988	-14.8%
Serious injuries	66	61	-7.6%	52	-14.8%
Slight injuries	1,169	1,099	-6.0%	936	-14.8%

* Provisional data

Graph 2: Road traffic accidents and casualties, November 2015-2017*



* Provisional data

Table 2: Road traffic accidents and casualties, by region and department, November 2016 – 2017*

Region and Department	Road accidents			Fatalities			Serious injuries			Slight injuries		
	2016	2017*	%	2016	2017*	%	2016	2017*	%	2016	2017*	%
Greece Total	978	853	-12.8%	65	53	-18.5%	61	52	-14.8%	1,099	936	-14.8%
Anatoliki Makedonia, Thraki (East Macedonia and Thrace)	37	20	-45.9%	1	1	0.0%	5	2	-60.0%	45	24	-46.7%
Drama	5	4	-20.0%	0	0		2	0		3	4	
Evros	9	7	-22.2%	0	1		0	2		12	8	
Kavala	10	2	-80.0%	0	0		0	0		14	2	
Xanthi	7	3	-57.1%	1	0		2	0		11	3	
Rodopi	6	4	-33.3%	0	0		1	0		5	7	
Kentriki Makedonia (Central Macedonia)	209	161	-23.0%	7	11	57.1%	6	9	50.0%	242	177	-26.9%
Imathia	4	3	-25.0%	0	1		0	0		4	3	
Thessaloniki	184	135	-26.6%	4	5		6	4		213	152	
Kilkis	4	4	0.0%	0	0		0	0		7	5	
Pella	6	5	-16.7%	2	0		0	2		4	5	
Pieria	3	3	0.0%	0	2		0	0		5	3	
Serres	5	2	-60.0%	1	0		0	3		5	0	
Chalkidiki	3	9	200.0%	0	3		0	0		4	9	
Dytiki Makedonia (West Macedonia)	6	4	-33.3%	2	0	-100.0%	0	0	-	7	7	0.0%
Grevena	2	0	-100.0%	2	0		0	0		3	0	
Kastoria	0	0	-	0	0		0	0		0	0	
Kozani	4	4	0.0%	0	0		0	0		4	7	
Florina	0	0	-	0	0		0	0		0	0	
Ipeiros (Epirus)	4	6	50.0%	2	2	0.0%	0	1	-	4	3	-25.0%
Arta	1	1	0.0%	0	1		0	0		1	0	
Thesprotia	1	3	200.0%	1	1		0	1		0	1	
Ioannina	1	2	100.0%	0	0		0	0		1	2	
Preveza	1	0	-100.0%	1	0		0	0		2	0	
Thessalia (Thessaly)	19	20	5.3%	4	3	-25.0%	3	2	-33.3%	23	31	34.8%
Karditsa	6	3	-50.0%	0	0		1	0		8	7	
Larissa	7	9	28.6%	1	1		1	1		8	13	
Magnissia	5	3	-40.0%	2	1		1	0		7	4	
Trikala	1	5	400.0%	1	1		0	1		0	7	
Ionioi Nisoi (Ionian Islands)	9	6	-33.3%	2	2	0.0%	1	2	100.0%	7	5	-28.6%
Zakynthos	3	1	-66.7%	0	2		0	1		3	0	
Kerkyra	2	2	0.0%	0	0		0	0		2	2	
Kefallinia	2	2	0.0%	1	0		0	0		2	3	
Lefkada	2	1	-50.0%	1	0		1	1		0	0	

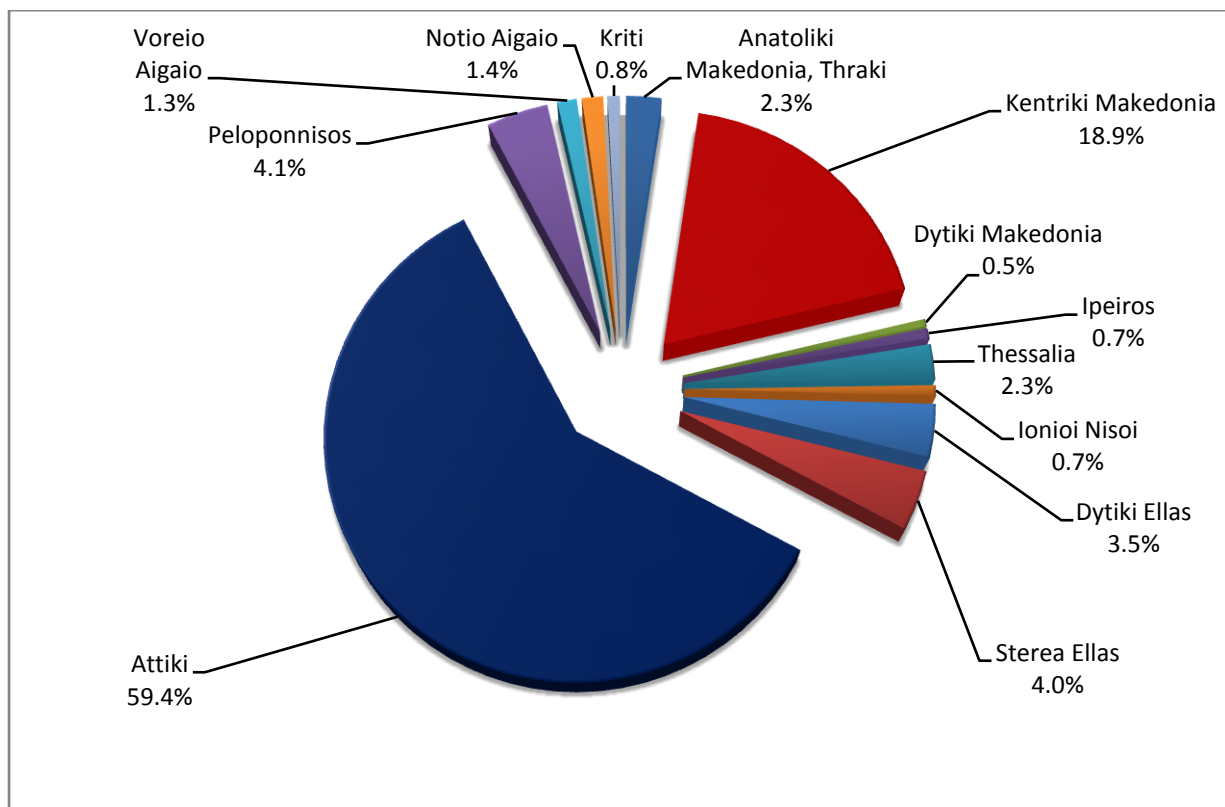
* Provisional data

Table 2: Road traffic accidents and casualties, by region and department, November 2016 – 2017* (Continued)

Region and Department	Road accidents			Fatalities			Serious injuries			Slight injuries		
	2016	2017*	%	2016	2017*	%	2016	2017*	%	2016	2017*	%
Dytiki Ellas (West Greece)	40	30	-25.0%	5	4	-20.0%	2	5	150.0%	47	25	-46.8%
Etolia & Akarnania	14	7	-50.0%	1	1		1	1		15	6	
Achaia	22	17	-22.7%	3	2		1	1		28	17	
Ilia	4	6	50.0%	1	1		0	3		4	2	
Stereia Ellas	37	34	-8.1%	4	7	75.0%	5	5	0.0%	45	36	-20.0%
Viotia	4	7	75.0%	1	2		1	0		4	9	
Evia	17	16	-5.9%	3	4		2	0		19	13	
Evrytania	0	1	-	0	0		0	0		0	1	
Fthiotida	13	7	-46.2%	0	1		2	2		17	7	
Fokida	3	3	0.0%	0	0		0	3		5	6	
Attiki (Attica)	531	507	-4.5%	16	11	-31.3%	25	17	-32.0%	604	558	-7.6%
Peloponnisos (Peloponnese)	47	35	-25.5%	7	6	-14.3%	7	3	-57.1%	46	39	-15.2%
Argolida	7	3	-57.1%	2	1		1	0		4	2	
Arkadia	7	4	-42.9%	0	1		1	1		8	3	
Korinthia	14	14	0.0%	1	0		2	1		17	17	
Lakonia	9	6	-33.3%	0	4		3	0		7	8	
Messinia	10	8	-20.0%	4	0		0	1		10	9	
Voreio Aigaio (North Aegean)	9	11	22.2%	2	2	0.0%	1	2	100.0%	7	14	100.0%
Lesvos	4	5	25.0%	1	2		0	2		4	7	
Samos	4	4	0.0%	1	0		1	0		2	5	
Chios	1	2	100.0%	0	0		0	0		1	2	
Notio Aigaio (South Aegean)	13	12	-7.7%	4	1	-75.0%	1	2	100.0%	10	11	10.0%
Dodekanissos	8	4	-50.0%	3	0		1	1		5	5	
Kyklades	5	8	60.0%	1	1		0	1		5	6	
Kriti (Crete)	17	7	-58.8%	9	3	-66.7%	5	2	-60.0%	12	6	-50.0%
Iraklio	6	4	-33.3%	3	3		2	2		5	2	
Lassithi	3	0	-100.0%	1	0		2	0		1	0	
Rethymno	3	1	-66.7%	3	0		0	0		3	1	
Chania	5	2	-60.0%	2	0		1	0		3	3	

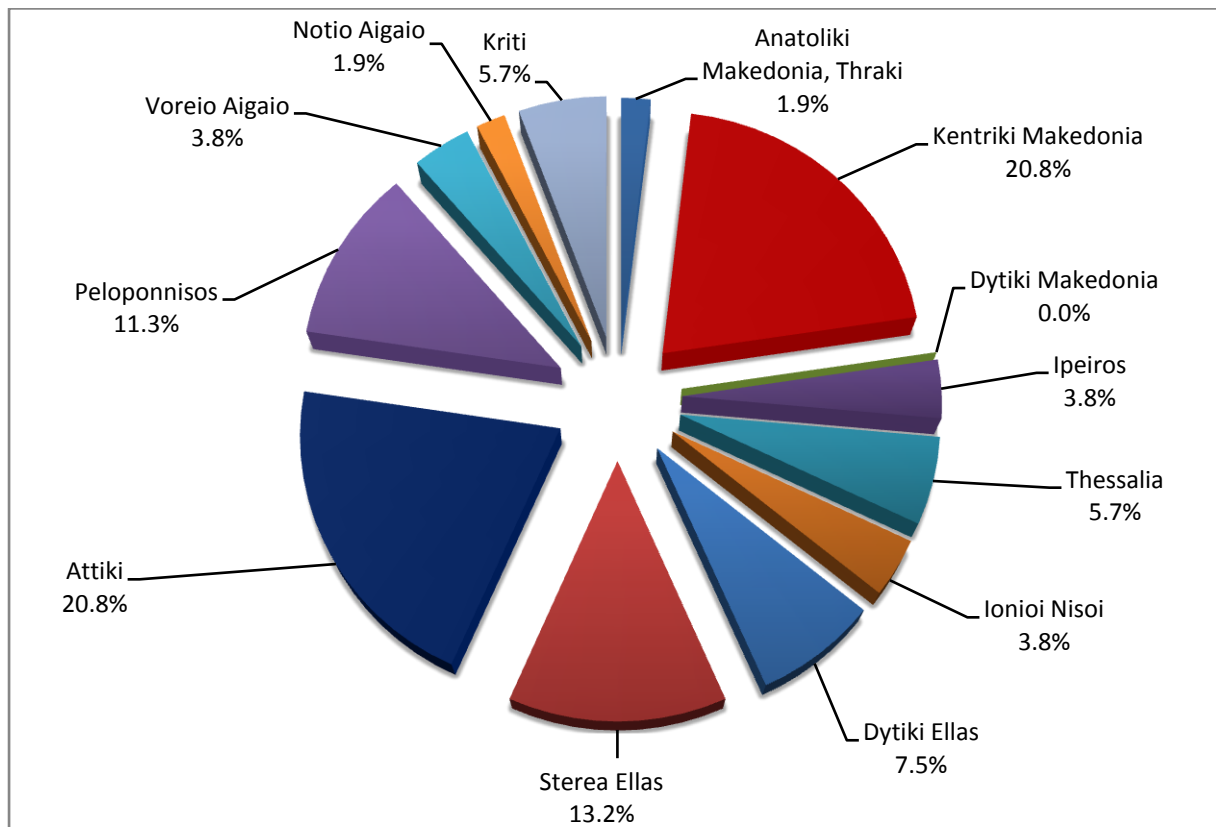
* Provisional data

**Graph 3: Road traffic accidents by region,
November 2017 ***



* Provisional data

**Graph 4: Fatalities by region,
November 2017 ***



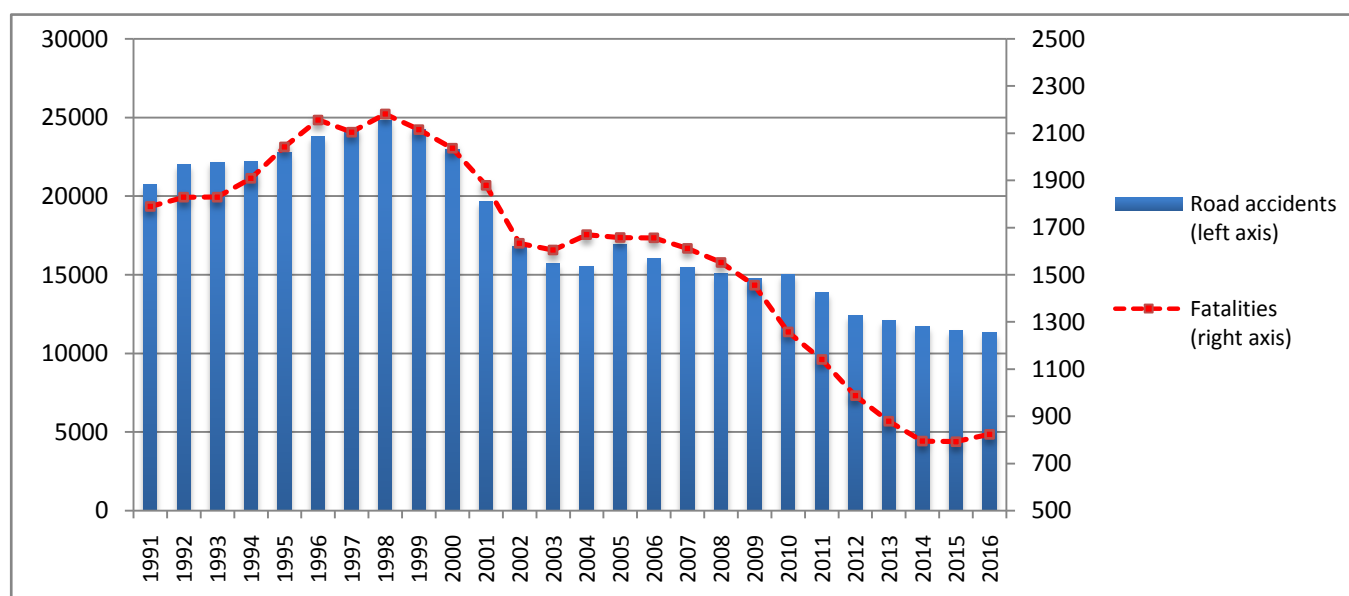
* Provisional data

Table 3: Road Traffic Accidents and casualties for the period January - November 2015, 2016 and 2017*

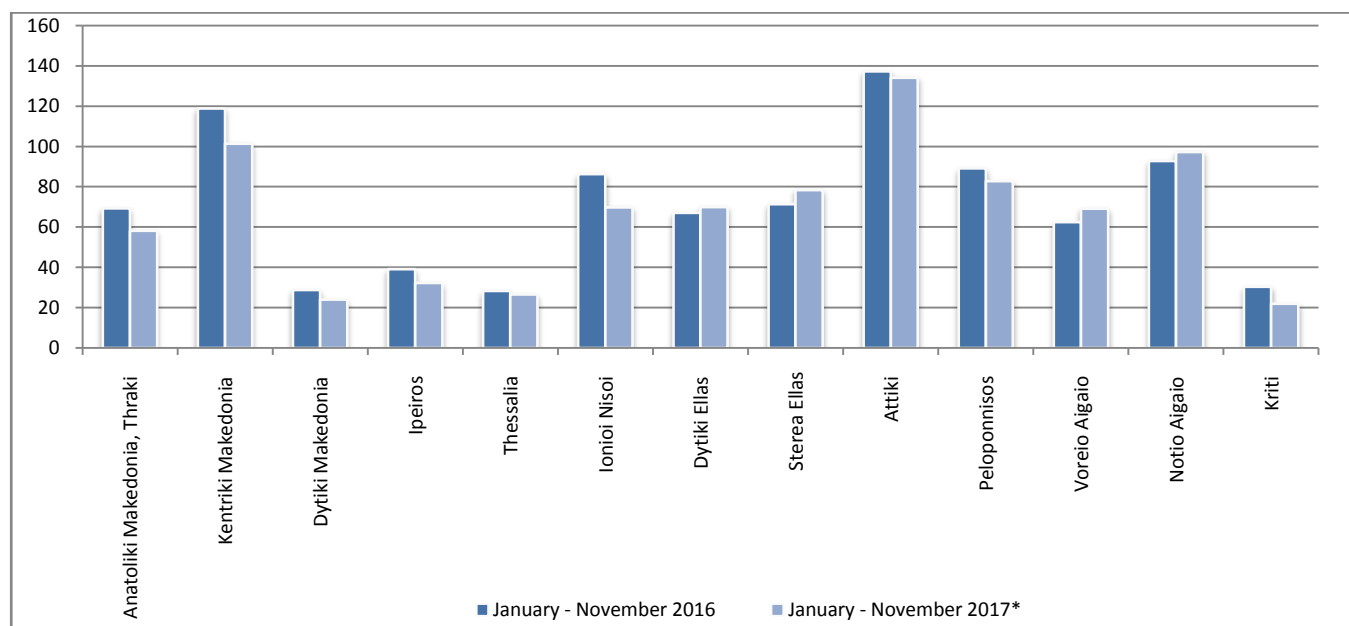
	2015		2016		2017 *	
	January - November	Total year	January - November	Total year	January - November	November
Road Accidents	10,339	11,440	10,436	11,318	9,838	
Annual Change (%)			0.9%	-1.1%	-5.7%	
Fatalities	717	793	766	824	671	
Annual Change (%)			6.8%	3.9%	-12.4%	
Serious injuries	926	999	826	879	654	
Annual Change (%)			-10.8%	-12.0%	-20.8%	
Slight injuries	11,822	13,097	11,930	12,946	11,169	
Annual Change (%)			0.9%	-1.2%	-6.4%	

* Provisional data

Graph 5: Total Road traffic accidents and fatalities, 1991-2016

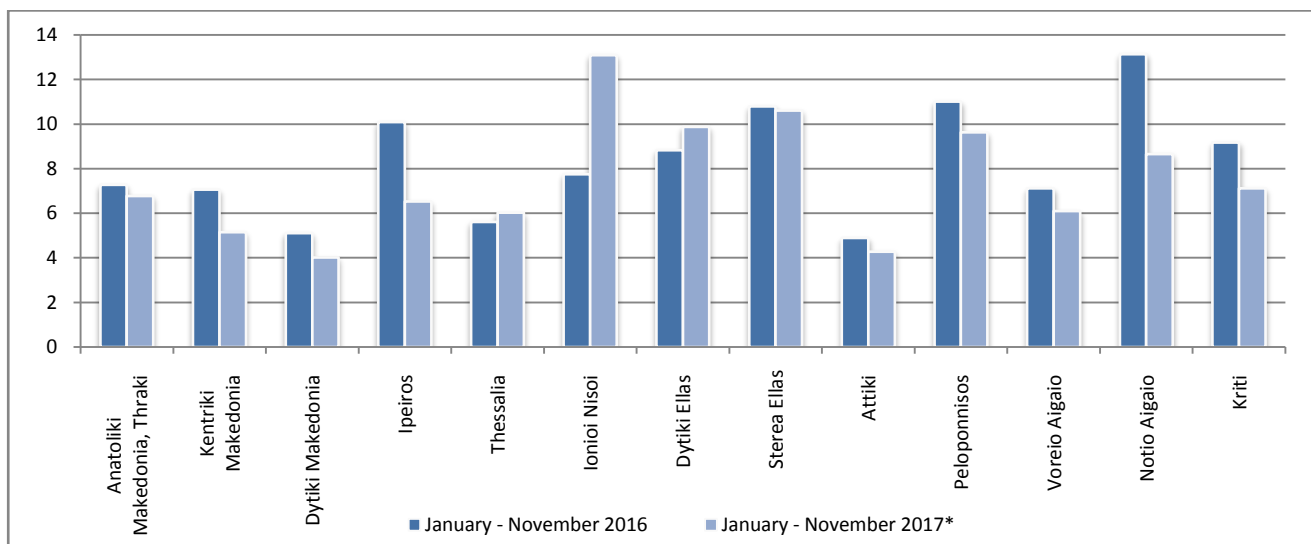


Graph 6: Road accidents per 100,000 inhabitants

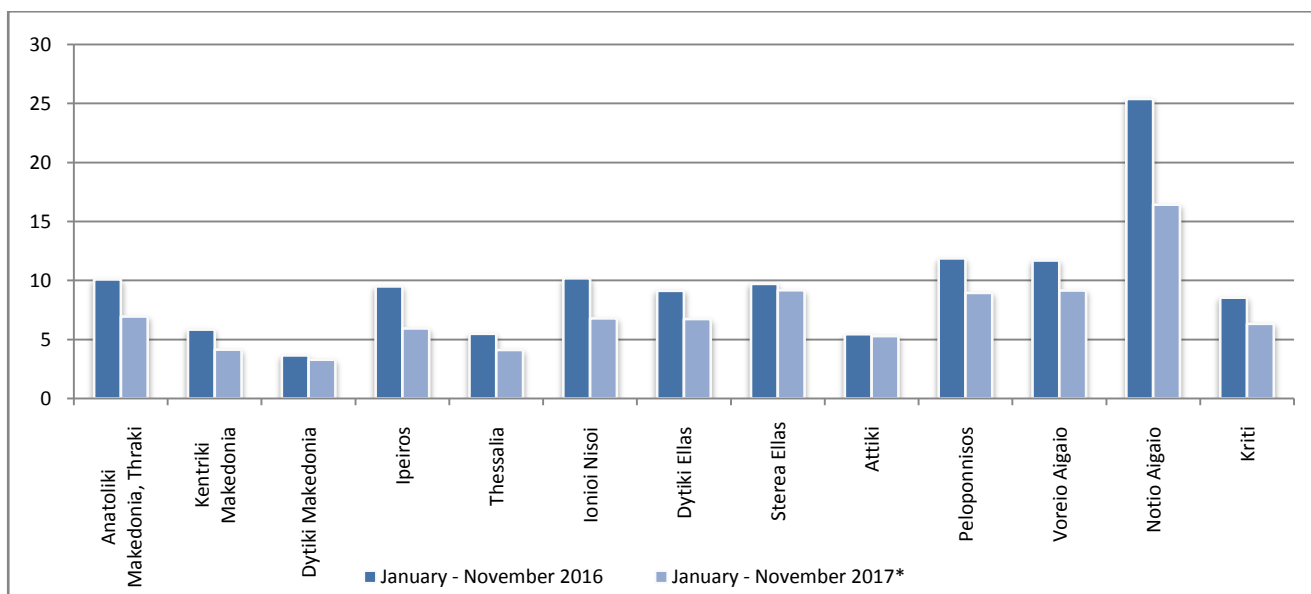


* Provisional data

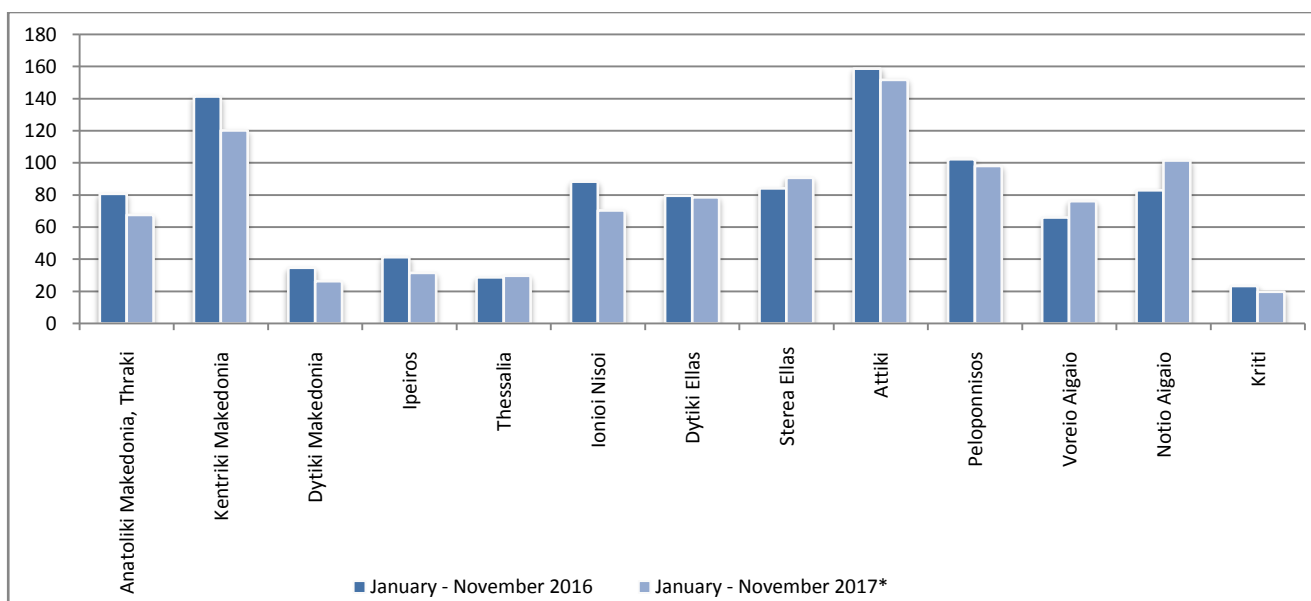
Graph 7: Fatalities per 100,000 inhabitants



Graph 8: Serious injuries per 100,000 inhabitants



Graph 9: Slight injuries per 100,000 inhabitants



* Provisional data

Explanatory Notes

Survey on Road Accidents	<p>The survey on road accidents is conducted on a monthly basis and it records, for each department of Greece and for each month separately, the number of accidents resulting in death or injury, as well as the number of persons injured by categories (drivers, passengers, pedestrians).</p> <p>On a yearly basis, road accidents are further analyzed. The competent agencies for filling in/collecting the forms on road accidents are the local Police Authorities and the local Port Authorities of Greece.</p> <p>The lower level of analysis for the place where an injury road accident occurred is the Municipal – Local Commune, which is described by a 8-digit geographic code. Data are collected on a monthly basis. The main variables are the following: place of accident, kind of road, casualties, conditions of road surface and type of road.</p>
Legal basis	<p>The Survey on Road Traffic Accidents is governed by Council Decision 93/704 of the European Community.</p>
Reference Period	<p>Monthly.</p>
Availability of Data	<p>Provisional data are available 2 months after the reference month.</p> <p>Final data are available 10 months after the reference year.</p>
National Definitions	<p>Road accident (injury accident): Any accident involving at least one road motor vehicle in motion on a public road or square to which the public has access (excluding yards, industrial sites or vehicle depot of public transport enterprises), resulting in at least one injured or killed person. Accidents with only material damages are not included.</p> <p>Fatality (Death): Any person killed immediately or dying within 30 days as a result of an injury accident (This national definition applies since 01.01.1996)</p> <p>Person injured: Any person who sustained an injury as result of an injury accident, and who normally needs medical treatment.</p> <p>Serious injury: Any person who sustained an injury as result of an injury accident, such as brain damages, mutilation, multiple injuries, which may result in lack of awareness or which are life-threatening.</p> <p>Slight injury: Any person injured who sustained minor and not life-threatening injuries.</p> <p>Vehicle: Include motor vehicles, trolleybuses, motorcycles, bicycles, motorbikes, agricultural and road making machines, animal and hand-drawn vehicles. Railway vehicles are excluded, unless the road accident involves at least one of the aforementioned types of vehicles and therefore, railway vehicles are considered vehicles.</p>
Methodology	<p>The forms of the survey are filled in by the local Police Authorities and the local Port Authorities as well.</p>
References	<p>More information about road accidents is available on ELSTAT's website and more specifically at the link: www.statistics.gr > Population & Social Conditions > Accidents > Road Traffic Accidents.</p> <p>It should be noted that previous press releases and time series are available on ELSTAT's website: www.statistics.gr</p>