



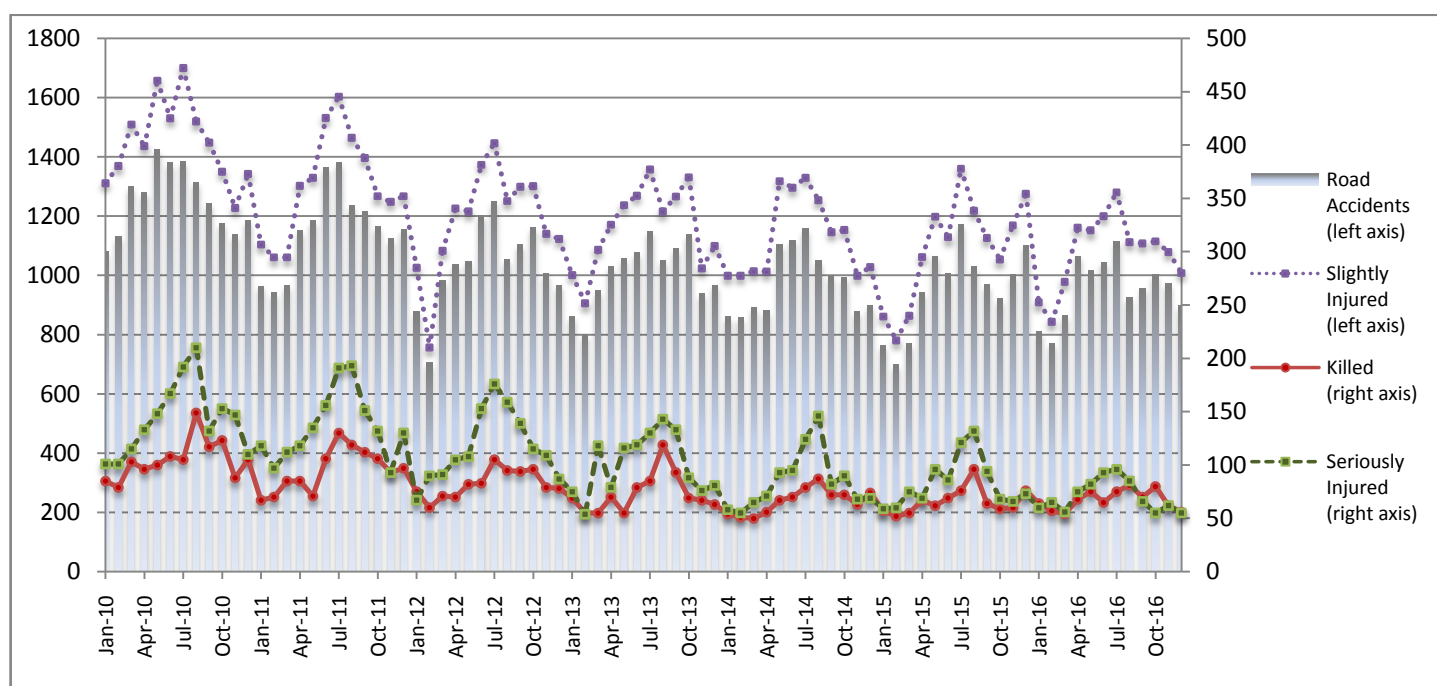
PRESS RELEASE

ROAD ACCIDENTS: December 2016

The Hellenic Statistical Authority (ELSTAT) announces data on Road Accidents for December 2016. In particular, the road traffic accidents which occurred in Greece, resulting in injured or killed persons, decreased by 18.5% in comparison with the corresponding month of 2015 (897 road accidents in December 2016 against 1,101 road accidents in December 2015).

Among the casualties of the injury-causing accidents that occurred in December 2016, 56 persons were killed, 55 persons were seriously injured and 1,008 persons were slightly injured. In contrast, in December 2015 the corresponding figures were: 76 persons killed, 73 seriously injured and 1,275 slightly injured. Therefore, road accident casualties in December 2016 recorded a decrease by 26.3% for persons killed, by 24.7% for persons seriously injured and by 20.9% for persons slightly injured.

**Graph 1: Road Traffic Accidents and casualties,
January 2010-December 2016**



Provisional data: Apr 16 – Dec 16

Information:

Social Statistics Division

Justice and Public Order Statistics Section

D. Athanasopoulou

Tel: 213 1352767

Fax : 213 1352764

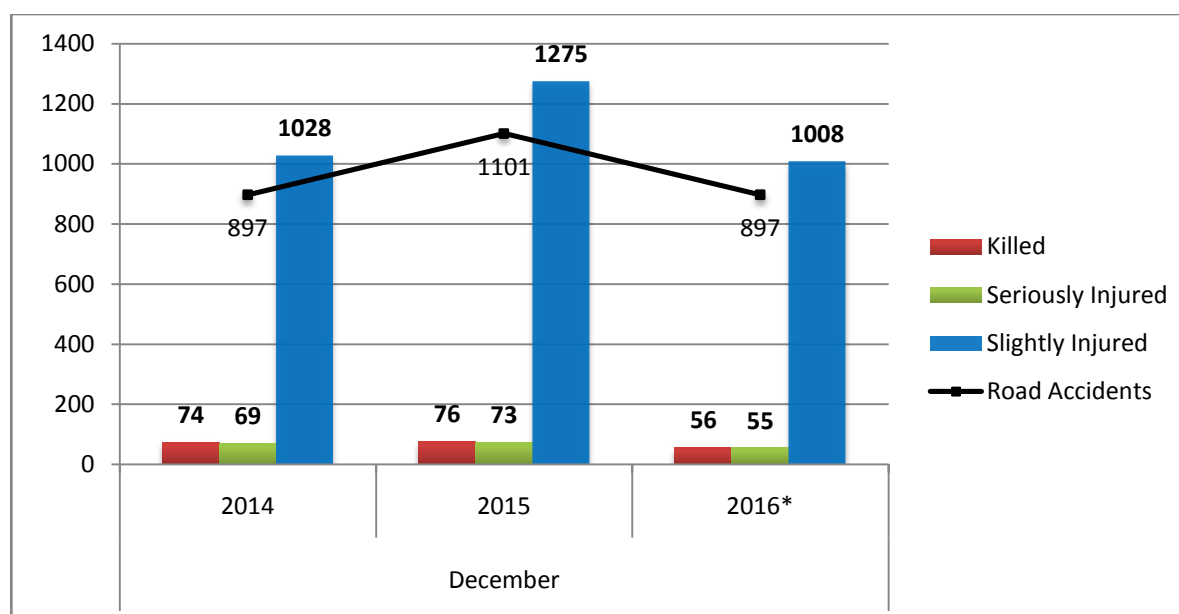
e-mail: d.athanasopoulou@statistics.gr

Table 1: Road Traffic Accidents and casualties, 2014-2016

| | December | | | | |
|-----------------------|--------------|--------------|---------------|--------------|----------------|
| | 2014 | 2015 | 2015/2014 (%) | 2016* | 2016*/2015 (%) |
| Road Accidents | 897 | 1,101 | 22.7% | 897 | -18.5% |
| Killed | 74 | 76 | 2.7% | 56 | -26.3% |
| Total Injured | 1,097 | 1,348 | 22.9% | 1,063 | -21.1% |
| Seriously Injured | 69 | 73 | 5.8% | 55 | -24.7% |
| Slightly Injured | 1,028 | 1,275 | 24.0% | 1,008 | -20.9% |

* Provisional data

Graph 2: Road Traffic Accidents and casualties, 2014-2016



* Provisional data

Table 2:
Road Traffic Accidents and casualties, by region and department,
December 2015 / 2016

| Region and Department | Road Accidents | | | Killed | | | Seriously Injured | | | Slightly Injured | | |
|--|----------------|------------|---------------|-----------|-----------|----------------|-------------------|-----------|---------------|------------------|--------------|---------------|
| | 2015 | 2016* | % | 2015 | 2016* | % | 2015 | 2016* | % | 2015 | 2016* | % |
| Greece Total | 1,101 | 897 | -18.5% | 76 | 56 | -26.3% | 73 | 55 | -24.7% | 1,275 | 1,008 | -20.9% |
| Anatoliki Macedonia, Thraki (East Macedonia and Thrace) | 37 | 25 | -32.4% | 4 | 5 | 25.0% | 3 | 4 | 33.3% | 52 | 23 | -55.8% |
| Drama | 4 | 6 | 50.0% | 0 | 2 | | 0 | 0 | | 7 | 6 | |
| Evros | 11 | 5 | -54.5% | 3 | 1 | | 1 | 1 | | 11 | 3 | |
| Kavala | 8 | 9 | 12.5% | 0 | 2 | | 2 | 2 | | 12 | 7 | |
| Xanthi | 6 | 1 | -83.3% | 1 | 0 | | 0 | 0 | | 6 | 1 | |
| Rodopi | 8 | 4 | -50.0% | 0 | 0 | | 0 | 1 | | 16 | 6 | |
| Kentriki Macedonia (Central Macedonia) | 217 | 211 | -2.8% | 8 | 10 | 25.0% | 10 | 7 | -30.0% | 263 | 246 | -6.5% |
| Imathia | 10 | 4 | -60.0% | 0 | 0 | | 1 | 1 | | 16 | 4 | |
| Thessaloniki | 182 | 181 | -0.5% | 3 | 7 | | 5 | 4 | | 222 | 216 | |
| Kilkis | 2 | 4 | 100.0% | 0 | 0 | | 0 | 0 | | 2 | 5 | |
| Pella | 5 | 9 | 80.0% | 1 | 2 | | 1 | 0 | | 4 | 10 | |
| Pierria | 2 | 1 | -50.0% | 0 | 0 | | 1 | 1 | | 2 | 0 | |
| Serres | 11 | 6 | -45.5% | 3 | 1 | | 1 | 0 | | 12 | 5 | |
| Chalkidiki | 5 | 6 | 20.0% | 1 | 0 | | 1 | 1 | | 5 | 6 | |
| Dytiki Macedonia (West Macedonia) | 12 | 10 | -16.7% | 3 | 1 | -66.7% | 3 | 1 | -66.7% | 13 | 9 | -30.8% |
| Grevena | 2 | 0 | -100.0% | 3 | 0 | | 0 | 0 | | 1 | 0 | |
| Kastoria | 7 | 5 | -28.6% | 0 | 1 | | 2 | 0 | | 7 | 4 | |
| Kozani | 2 | 5 | 150.0% | 0 | 0 | | 0 | 1 | | 4 | 5 | |
| Florina | 1 | 0 | -100.0% | 0 | 0 | | 1 | 0 | | 1 | 0 | |
| Ipeiros (Epirus) | 11 | 8 | -27.3% | 1 | 1 | 0.0% | 0 | 4 | - | 15 | 6 | -60.0% |
| Arta | 2 | 1 | -50.0% | 1 | 0 | | 0 | 1 | | 1 | 1 | |
| Thesprotia | 1 | 3 | 200.0% | 0 | 0 | | 0 | 0 | | 1 | 3 | |
| Ioannina | 6 | 3 | -50.0% | 0 | 1 | | 0 | 2 | | 10 | 1 | |
| Preveza | 2 | 1 | -50.0% | 0 | 0 | | 0 | 1 | | 3 | 1 | |
| Thessalia (Thessaly) | 15 | 16 | 6.7% | 4 | 0 | -100.0% | 1 | 4 | 300.0% | 14 | 16 | 14.3% |
| Karditsa | 3 | 6 | 100.0% | 0 | 0 | | 0 | 1 | | 4 | 8 | |
| Larisa | 3 | 8 | 166.7% | 1 | 0 | | 0 | 2 | | 2 | 6 | |
| Magnisia | 8 | 0 | -100.0% | 3 | 0 | | 1 | 0 | | 7 | 0 | |
| Trikala | 1 | 2 | 100.0% | 0 | 0 | | 0 | 1 | | 1 | 2 | |
| Ionioi Nisoi (Ionian Islands) | 14 | 12 | -14.3% | 0 | 2 | - | 0 | 2 | - | 18 | 9 | -50.0% |
| Zakynthos | 0 | 2 | - | 0 | 0 | | 0 | 1 | | 0 | 1 | |
| Kerkyra | 4 | 5 | 25.0% | 0 | 1 | | 0 | 1 | | 6 | 4 | |
| Kefallinia | 3 | 2 | -33.3% | 0 | 1 | | 0 | 0 | | 4 | 1 | |
| Lefkada | 7 | 3 | -57.1% | 0 | 0 | | 0 | 0 | | 8 | 3 | |

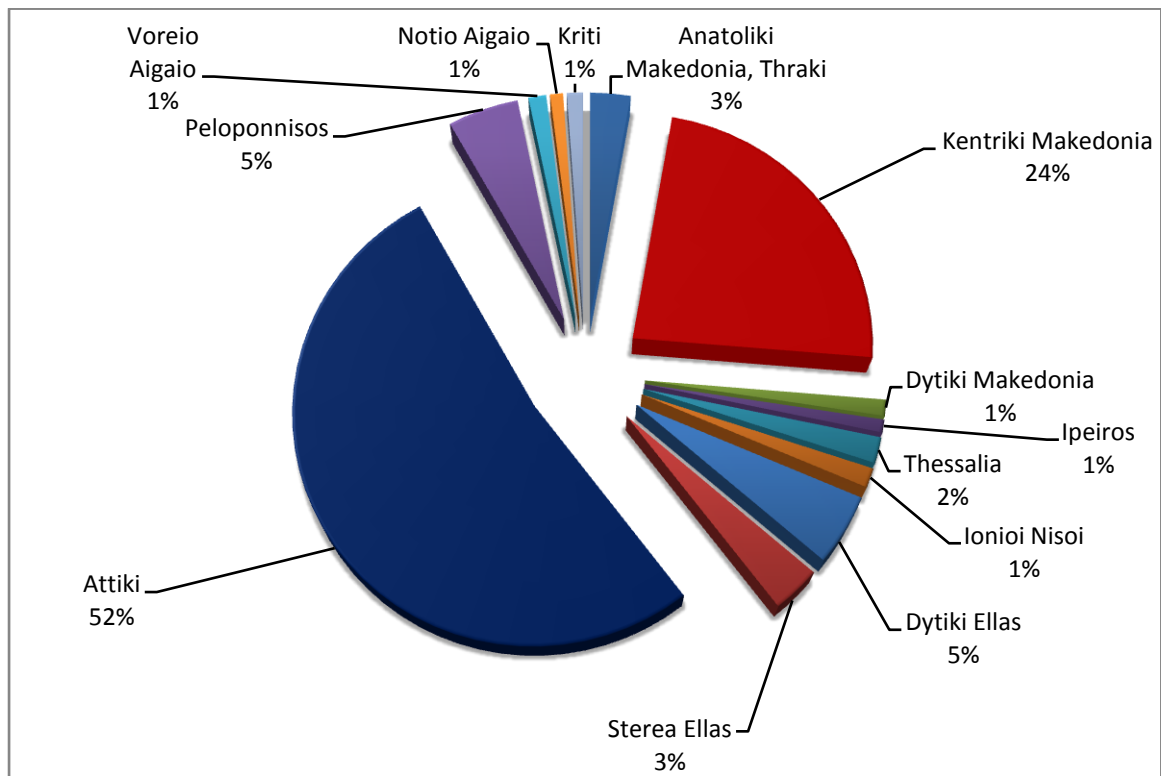
* Provisional data

Table 2 (Continued):
Road Traffic Accidents and casualties, by region and department,
December 2015 / 2016

| Region and Department | Road Accidents | | | Killed | | | Seriously Injured | | | Slightly Injured | | |
|-------------------------------------|----------------|------------|---------------|-----------|-----------|----------------|-------------------|-----------|----------------|------------------|------------|---------------|
| | 2015 | 2016* | % | 2015 | 2016* | % | 2015 | 2016* | % | 2015 | 2016* | % |
| Dytiki Ellas (West Greece) | 56 | 44 | -21.4% | 9 | 4 | -55.6% | 4 | 5 | 25.0% | 67 | 45 | -32.8% |
| Aitolia. Akarnania | 14 | 15 | 7.1% | 3 | 1 | | 1 | 1 | | 16 | 16 | |
| Achaia | 33 | 24 | -27.3% | 3 | 2 | | 1 | 2 | | 40 | 25 | |
| Ileia | 9 | 5 | -44.4% | 3 | 1 | | 2 | 2 | | 11 | 4 | |
| Stereia Ellas | 43 | 29 | -32.6% | 3 | 2 | -33.3% | 6 | 5 | -16.7% | 45 | 35 | -22.2% |
| Voiotia | 7 | 6 | -14.3% | 0 | 1 | | 1 | 1 | | 7 | 9 | |
| Evvoia | 22 | 15 | -31.8% | 2 | 0 | | 2 | 4 | | 22 | 16 | |
| Evrytania | 1 | 0 | -100.0% | 0 | 0 | | 0 | 0 | | 1 | 0 | |
| Fthiotida | 12 | 4 | -66.7% | 1 | 1 | | 3 | 0 | | 14 | 6 | |
| Fokida | 1 | 4 | 300.0% | 0 | 0 | | 0 | 0 | | 1 | 4 | |
| Attiki (Attica) | 600 | 469 | -21.8% | 24 | 16 | -33.3% | 24 | 15 | -37.5% | 694 | 546 | -21.3% |
| Peloponnisos (Peloponnese) | 61 | 44 | -27.9% | 8 | 8 | 0.0% | 10 | 5 | -50.0% | 63 | 45 | -28.6% |
| Argolida | 9 | 6 | -33.3% | 5 | 1 | | 0 | 2 | | 7 | 4 | |
| Arkadia | 3 | 8 | 166.7% | 0 | 1 | | 0 | 0 | | 5 | 12 | |
| Korinthia | 18 | 18 | 0.0% | 1 | 3 | | 0 | 1 | | 26 | 15 | |
| Lakonia | 11 | 6 | -45.5% | 1 | 0 | | 5 | 1 | | 7 | 7 | |
| Messinia | 20 | 6 | -70.0% | 1 | 3 | | 5 | 1 | | 18 | 7 | |
| Voreio Aigaio (North Aegean) | 7 | 11 | 57.1% | 2 | 2 | 0.0% | 3 | 0 | -100.0% | 6 | 10 | 66.7% |
| Lesvos | 3 | 6 | 100.0% | 1 | 1 | | 1 | 0 | | 5 | 5 | |
| Samos | 4 | 2 | -50.0% | 1 | 1 | | 2 | 0 | | 1 | 1 | |
| Chios | 0 | 3 | - | 0 | 0 | | 0 | 0 | | 0 | 4 | |
| Notio Aigaio (South Aegean) | 11 | 8 | -27.3% | 2 | 0 | -100.0% | 1 | 3 | 200.0% | 11 | 8 | -27.3% |
| Dodekanisos | 5 | 2 | -60.0% | 2 | 0 | | 0 | 0 | | 4 | 3 | |
| Kyklades | 6 | 6 | 0.0% | 0 | 0 | | 1 | 3 | | 7 | 5 | |
| Kriti (Crete) | 17 | 10 | -41.2% | 8 | 5 | -37.5% | 8 | 0 | -100.0% | 14 | 10 | -28.6% |
| Irakleio | 11 | 4 | -63.6% | 6 | 3 | | 8 | 0 | | 6 | 5 | |
| Lasithi | 0 | 3 | - | 0 | 1 | | 0 | 0 | | 0 | 3 | |
| Rethymno | 2 | 1 | -50.0% | 0 | 0 | | 0 | 0 | | 2 | 1 | |
| Chania | 4 | 2 | -50.0% | 2 | 1 | | 0 | 0 | | 6 | 1 | |

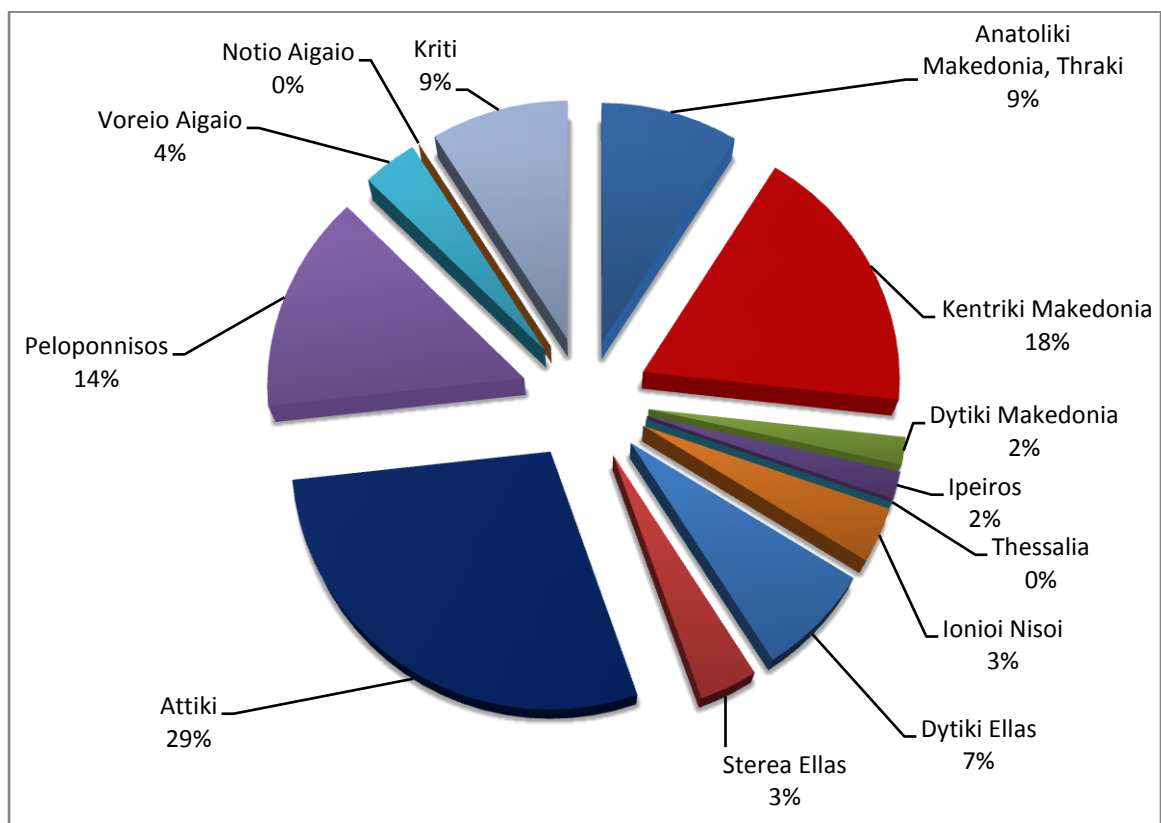
* Provisional data

**Graph 3: Road Traffic Accidents by region
December 2016 ***



* Provisional data

**Graph 4: Killed by region
December 2016 ***



* Provisional data

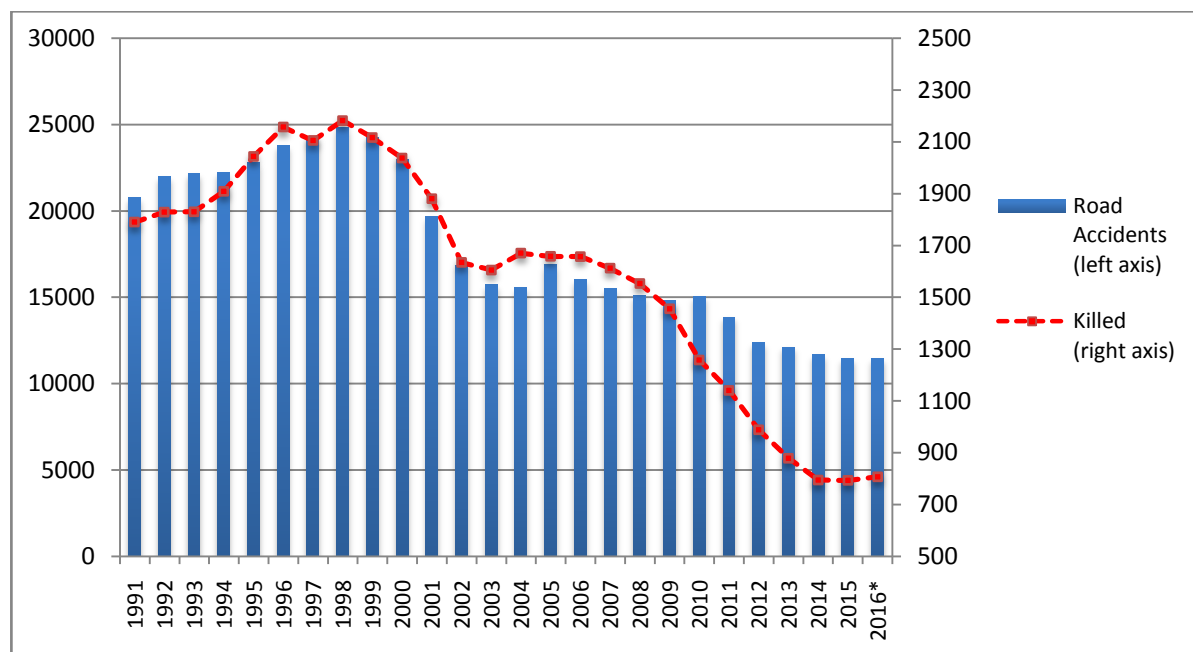
Table 3: Road Traffic Accidents and casualties for the period January-December 2014, 2015 and 2016

| | 2014 | 2015 | 2016* |
|----------------------------|--------------------|--------------------|--------------------|
| | January - December | January - December | January - December |
| Road Accidents | 11,690 | 11,440 | 11,439 |
| Annual Change (%) : | | -2.1% | 0.0% |
| Killed | 795 | 793 | 807 |
| Annual Change (%) : | | -0.3% | 1.8% |

* Provisional data

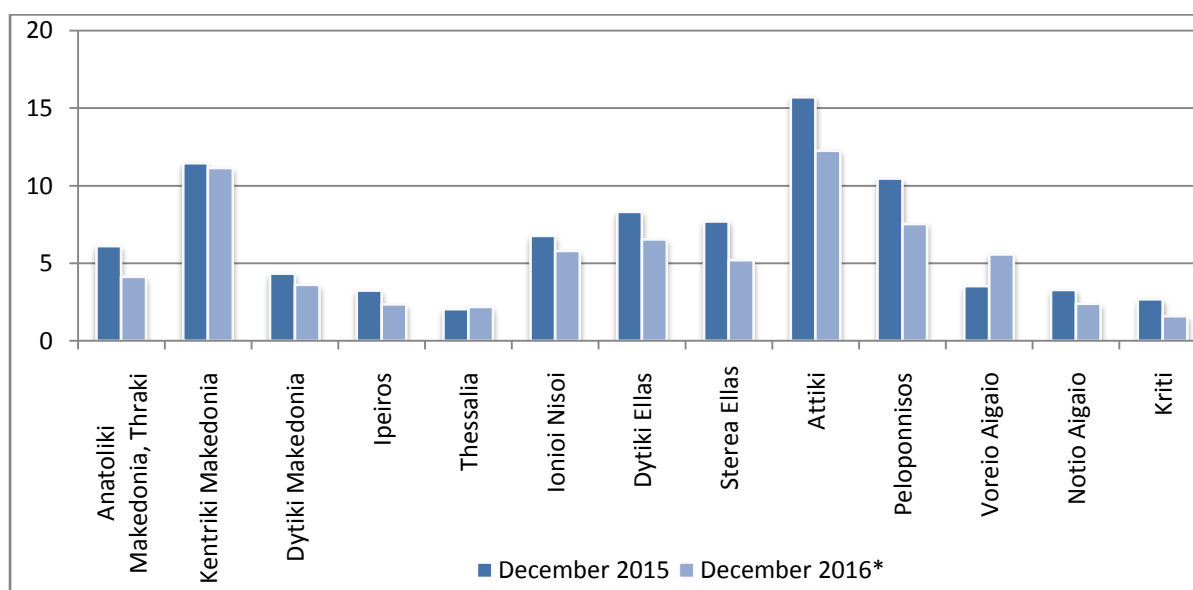
Note: For year 2015 data are not available for department of Zakynthos due to non-response.

Graph 5: Total Road Traffic Accidents and fatalities, 1991-2016



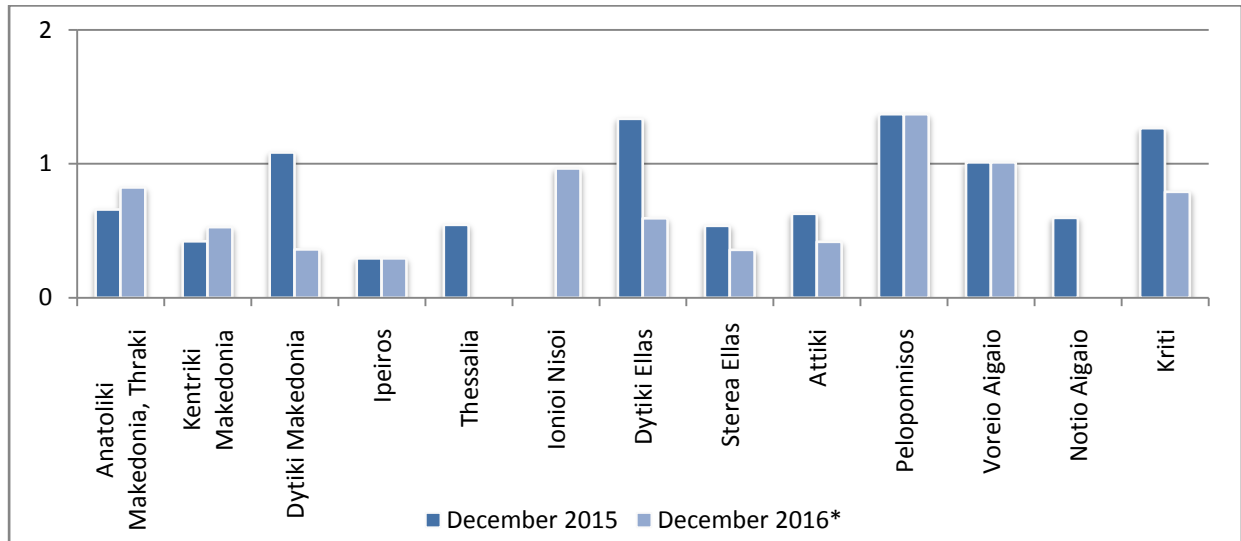
* Provisional data

Graph 6: Road accidents per 100,000 inhabitants

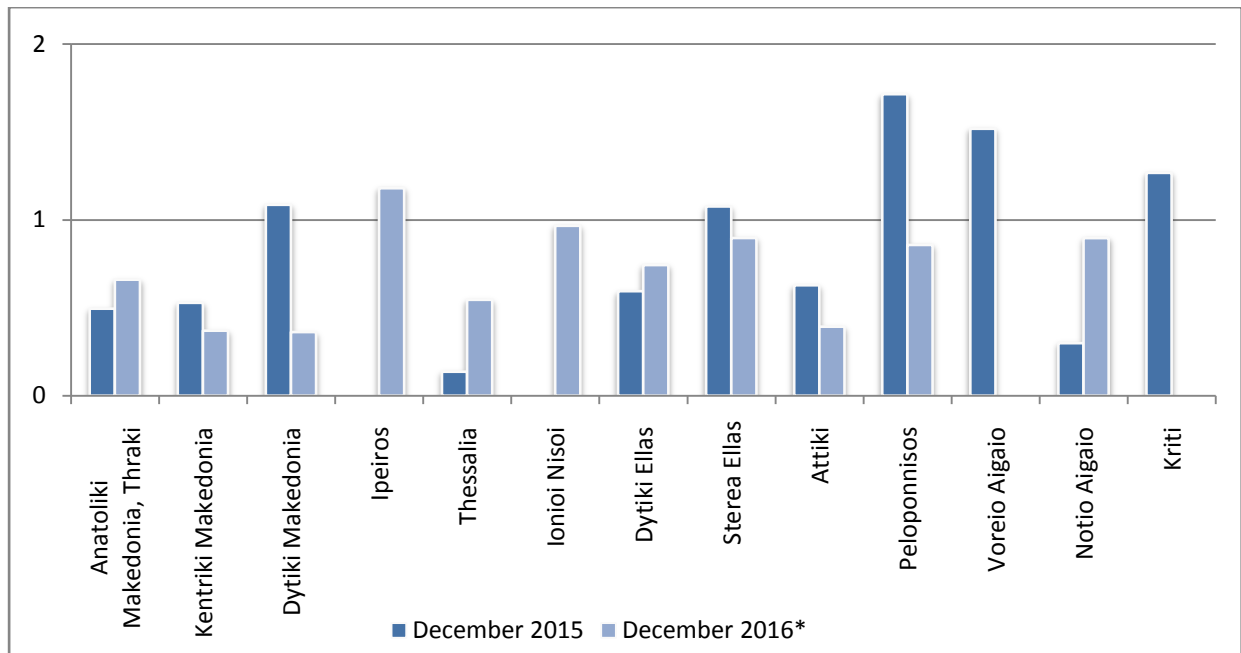


* Provisional data

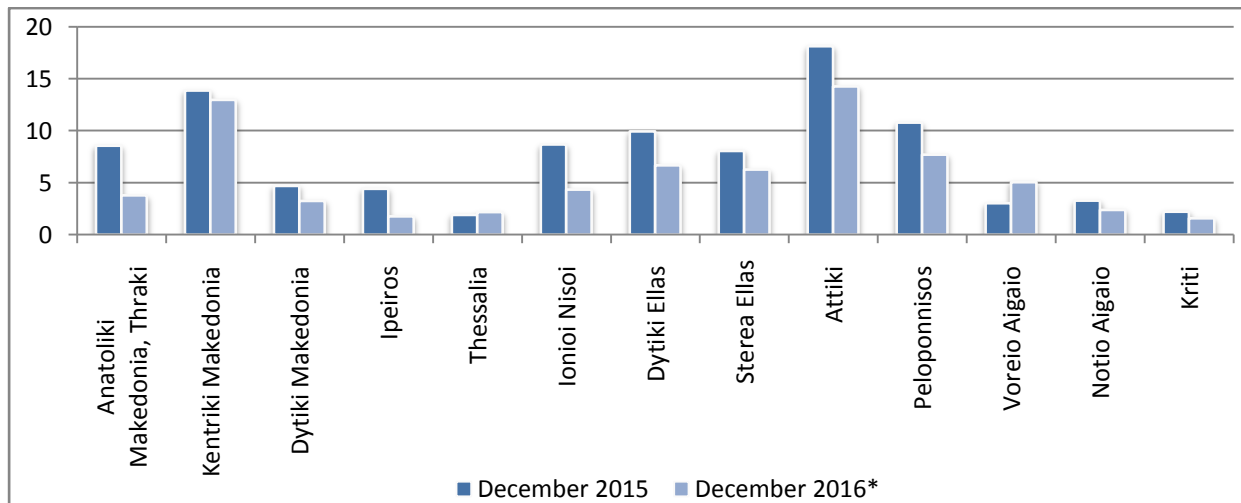
Graph 7: Persons killed per 100,000 inhabitants



Graph 8: Persons seriously injured per 100,000 inhabitants



Graph 9: Persons slightly injured per 100,000 inhabitants



* Provisional data

Explanatory Notes

| | |
|---------------------------------|---|
| Survey on Road Accidents | <p>The survey on road accidents is conducted on a monthly basis and it records, for each department of Greece and for each month separately, the number of accidents by fatal and/or non-fatal accident, as well as the number of persons injured by categories (drivers, passengers, pedestrians). On a yearly basis, road accidents are further analyzed.</p> <p>The competent agencies for filling in/collecting the questionnaires on road accidents are the local Police Authorities and the local Port Authorities of Greece.</p> <p>The lower level of analysis for the place where an injury road accident occurred is the settlement (oikismos), which is described by a 8-digit geographic code. Data are collected on a monthly basis.</p> <p>The main variables are the following: place of accident, kind of road, casualties, conditions of road surface and type of road.</p> |
| Legal basis | <p>The Survey on Road Traffic Accidents is governed by Council Decision 93/704 of the European Community.</p> |
| Reference Period | <p>Monthly.</p> |
| Availability of Data | <p>Provisional data are available 2 months after the reference month.</p> <p>Final data are available 1 year after the reference year.</p> |
| National Definitions | <p>Road accident (injury accident): Any accident involving at least one road motor vehicle in motion on a public road or square to which the public has access (excluding yards, industrial sites or vehicle depot of public transport enterprises), resulting in at least one injured or killed person. Accidents with only material damages are not included.</p> <p>Person killed: Any person killed immediately or dying within 30 days as a result of an injury accident (This national definition applies since 01.01.1996)</p> <p>Person injured: Any person who sustained an injury as result of an injury accident, and who normally needs medical treatment.</p> <p>Seriously injured: Any person who sustained an injury as result of an injury accident, such as brain damages, mutilation, multiple injuries, which may result in lack of awareness or which are life-threatening.</p> <p>Slightly injured: Any person injured who sustained minor and not life-threatening injuries.</p> <p>Vehicle: Include motor vehicles, trolleybuses, motorcycles, bicycles, motorbikes, agricultural and road making machines, animal and hand-drawn vehicles. Railway vehicles are excluded, unless the road accident involves at least one of the aforementioned types of vehicles and therefore, railway vehicles are considered vehicles.</p> |
| Methodology | <p>The questionnaires of the survey are filled in by the local Police Authorities and the local Port Authorities as well.</p> |
| References | <p>More information about road accidents is available on ELSTAT's website and more specifically at the link: www.statistics.gr > Population & Social Conditions > Accidents > Road Traffic Accidents.</p> <p>It should be noted that previous press releases and time series are available on ELSTAT's website: www.statistics.gr</p> |