



PRESS RELEASE

INDUSTRIAL PRODUCTION INDEX: June 2017, y-o-y increase of 1.6%

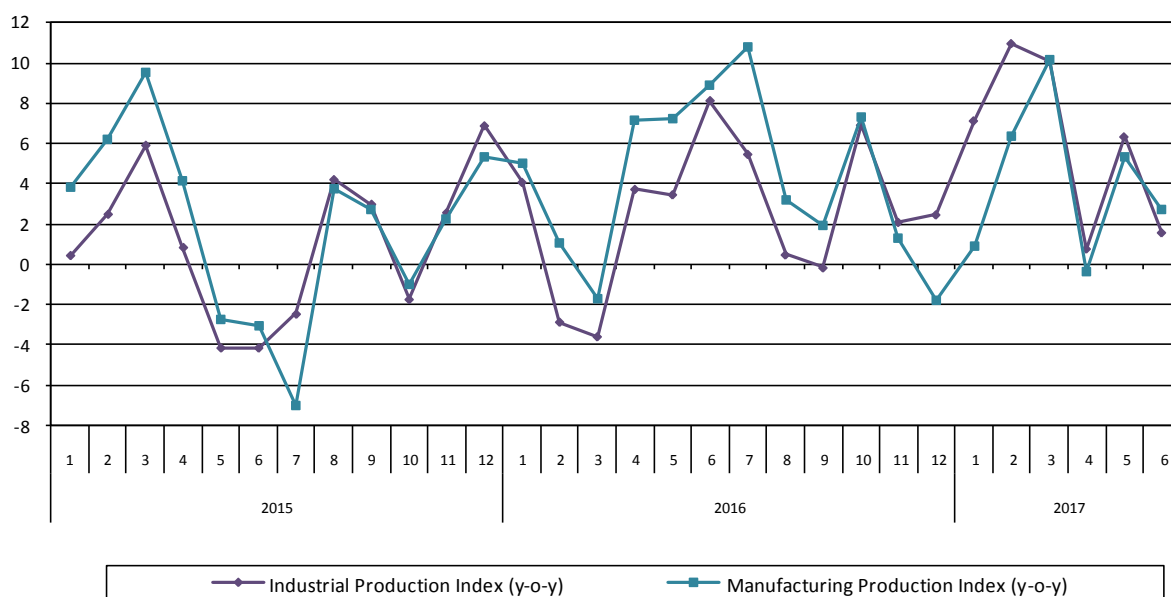
The evolution of the Industrial Production Index (IPI) with base year 2010=100.0 in June 2017, on the basis of provisional and working day adjusted data, is as follows:

The Overall Industrial Production Index in June 2017 recorded an increase of 1.6% compared with June 2016. The corresponding annual rate of change of the Overall IPI in June 2016 was 8.1% (Table 1).

The average Overall Industrial Production Index for the period from January to June 2017 recorded an increase of 6.0% compared with the average IPI of the period from January to June 2016 (Table 2).

The seasonally adjusted Overall Industrial Production Index in June 2017 recorded a decrease of 0.8% compared with May 2017 (Table 4).

Graph 1. Evolution of annual rates of change (y-o-y) of the Industrial Production Index and the Manufacturing Production Index (%)



Information:

Economic and Short-Term Indices Division
Production Indices Section

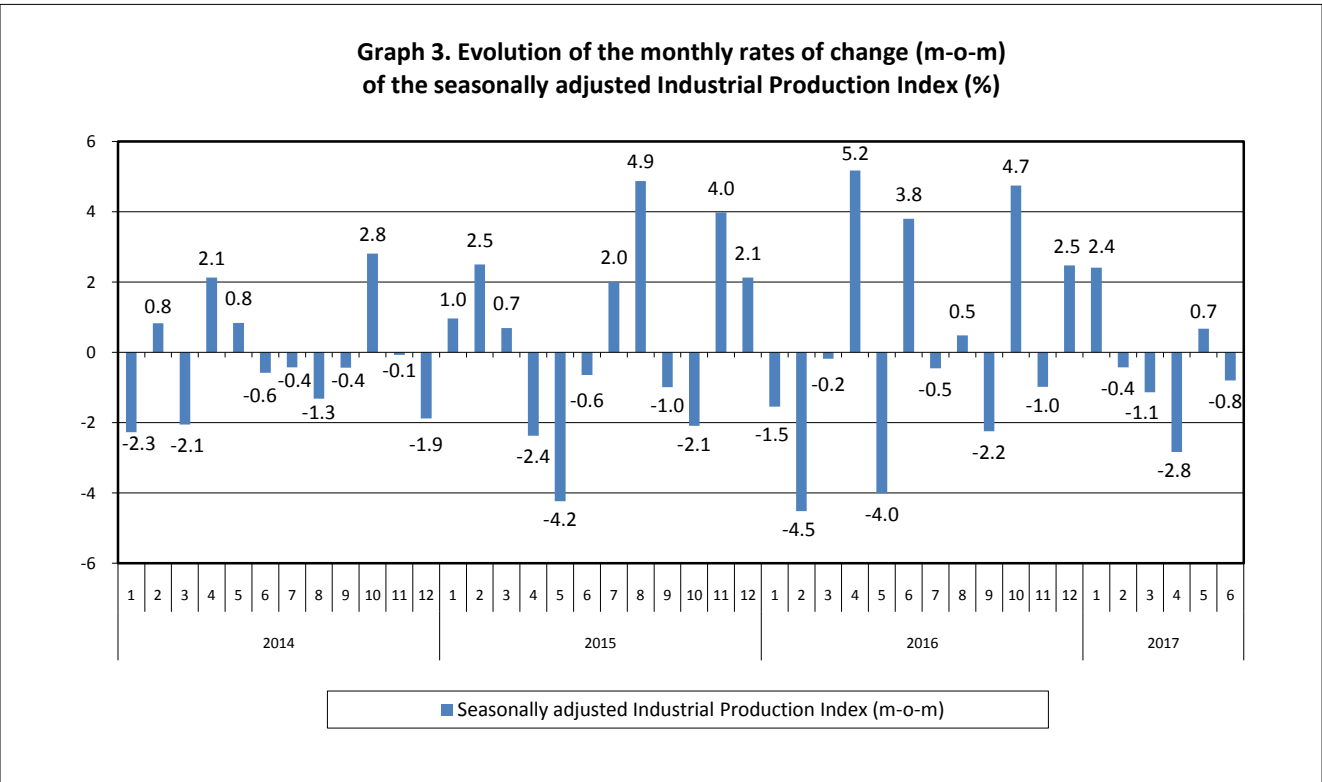
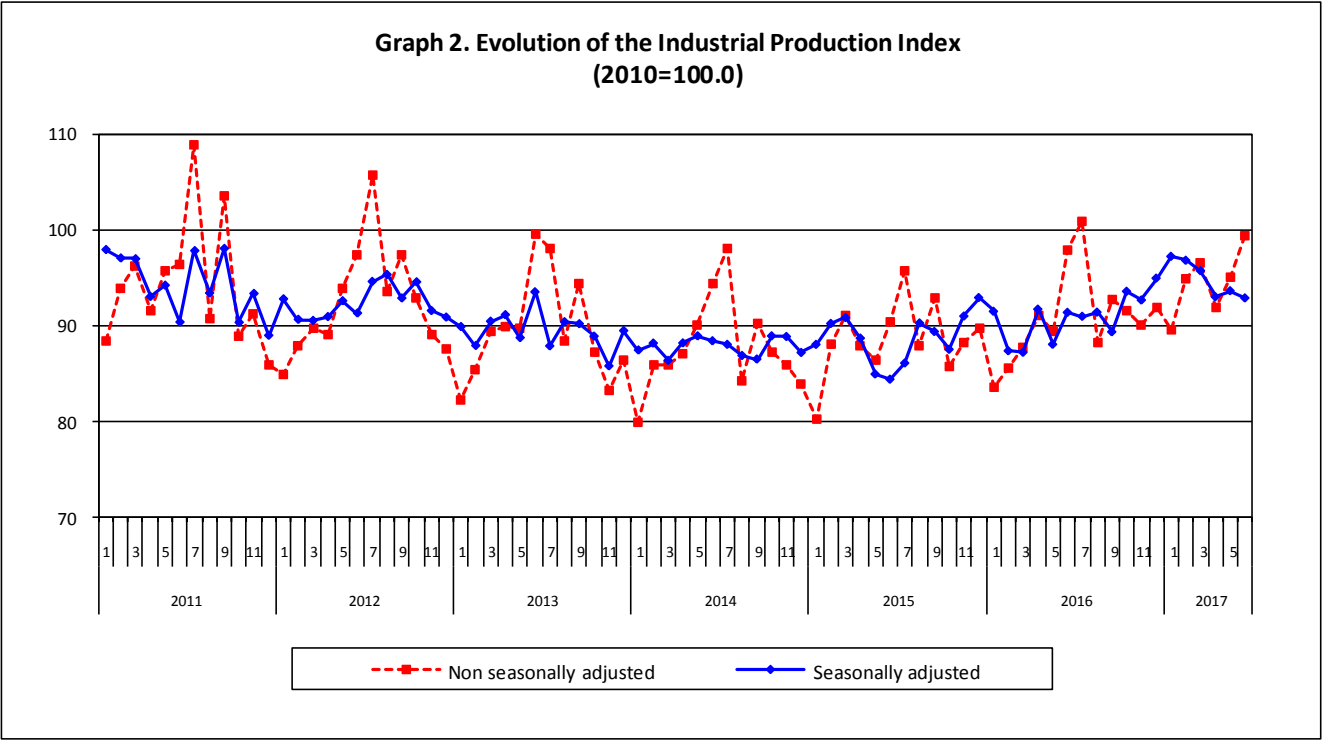
Diamantaki Aikaterini, Thymoglou Georgia

Tel: +30 213 135 2122, +30 213 135 2737

Fax: +30 213 135 2738

E-mail: a.diamantaki@statistics.gr, g.thymoglou@statistics.gr

The following graphs depict the evolution of the seasonally and non-seasonally adjusted Overall Industrial Production Index, as well as the monthly rates of change (m-o-m) of the seasonally adjusted index.



It should be noted that the time series with the seasonally adjusted indices is recalculated every time a new observation is added in the time series. Therefore, the seasonally adjusted data differ from the data published in the previous Press Release.

Evolution of the Industrial Production Index in June 2017

I. Annual changes: June 2017/ June 2016 (Table 1)

The 1.6% increase of the working day adjusted Overall IPI in June 2017, compared with the corresponding index in June 2016, is due to the annual changes of the sub-indices in the following industrial sections:

1. Increase of:

- 2.8% in the Manufacturing Production Index.

The increase was the result of the annual changes of the sub-indices in the following 2-digit divisions: tobacco products, coke and refined petroleum products, basic pharmaceutical products and pharmaceutical preparations, motor vehicles, trailers and semi-trailers.

- 0.1% in the Electricity Production Index.

2. Decrease of:

- 3.5% in the Mining and Quarrying Production Index.

The decrease was the result of the annual changes of the sub-indices in the following 2-digit divisions: extraction of crude petroleum and natural gas, other mining and quarrying products.

- 7.1% in the Water Supply Production Index.

II. Rates of change of the average index in the period January – June 2017 compared with the corresponding index of the period January – June 2016 (Table 2)

The 6.0% increase of the working day adjusted Overall IPI in the 6-month period January – June 2017, compared with the corresponding index in January – June 2016, is due to the corresponding rates of change of the sub-indices in the following industrial sections:

1. Increase of:

- 9.4% in the Mining and Quarrying Production Index.
- 4.2% in the Manufacturing Production Index.
- 14.1% in the Electricity Production Index.

2. Decrease of:

- 1.7% in the Water Supply Production Index.

III. Monthly changes: June 2017/ May 2017 (Table 4)

The 0.8% decrease of the seasonally adjusted Overall IPI in June 2017, compared with the corresponding index in May 2017, is due to the monthly changes of the sub-indices in the following industrial sections:

1. Decrease of:

- 9.8% in the Mining and Quarrying Production Index.
- 1.1% in the Manufacturing Production Index.
- 2.0% in the Water Supply Production Index.

2. Increase of:

- 4.8% in the Electricity Production Index.

The following graph depicts the evolution of the Industrial Production Index and the Industrial Sections Indices.

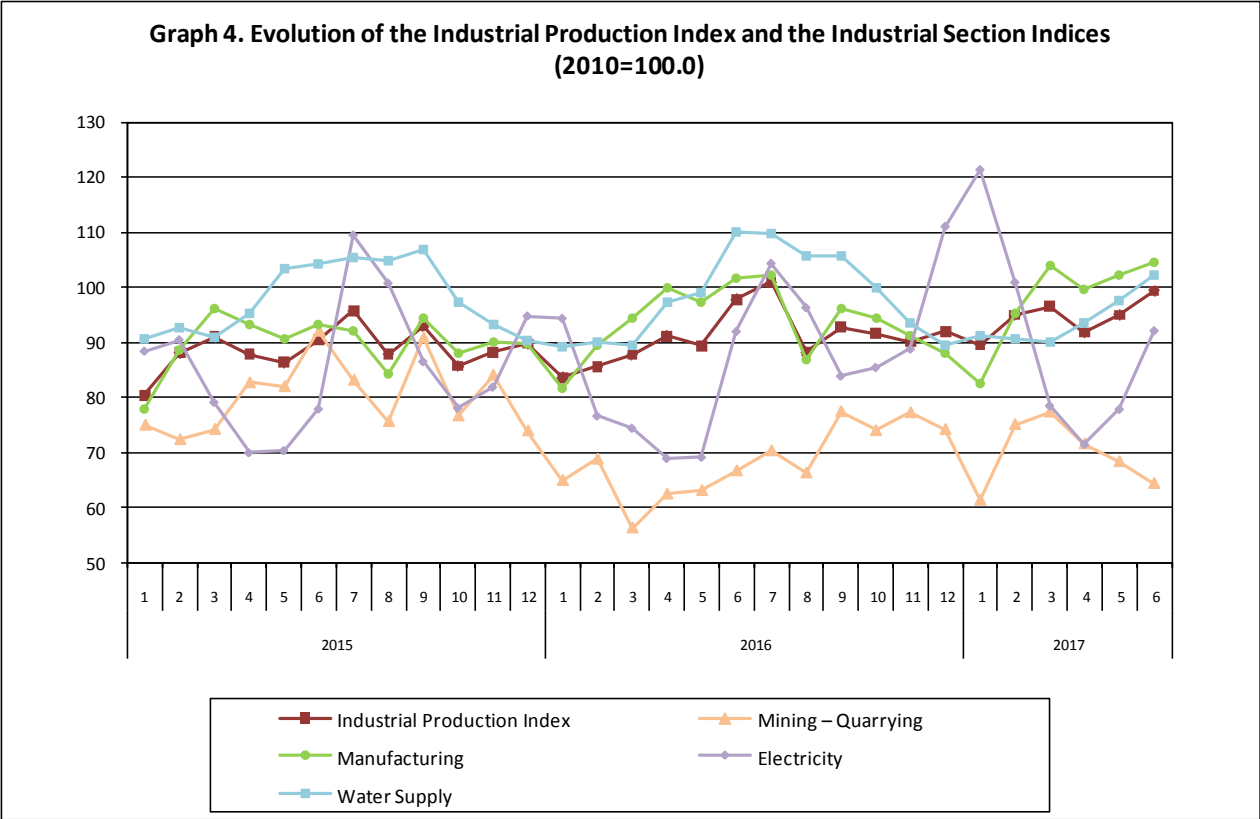


Table 1. Annual rates of change of the Industrial Production Index*(Working day adjusted data, according to the real number of working days)***Base year: 2010=100.0**

Code		Division	June			Rate of change (%)	
			2017*	2016	2015	2017/2016	2016/2015
OVERALL INDEX			99.36	97.82	90.46	1.6	8.1
B	MINING AND QUARRYING		64.35	66.65	92.07	-3.5	-27.6
05	Mining of coal and lignite		51.21	44.10	90.50	16.1	-51.3
06	Extraction of crude petroleum and natural gas		90.53	133.67	57.98	-32.3	130.5
07	Mining of metal ores		86.88	95.46	83.15	-9.0	14.8
08	Other mining and quarrying products		82.34	99.19	102.35	-17.0	-3.1
C	MANUFACTURING		104.42	101.62	93.31	2.8	8.9
10	Food		100.30	100.82	95.17	-0.5	5.9
11	Beverages		110.52	122.69	118.29	-9.9	3.7
12	Tobacco products		103.42	89.48	118.83	15.6	-24.7
13	Textiles		70.43	74.33	72.24	-5.3	2.9
14	Wearing apparel		41.96	47.33	54.31	-11.3	-12.9
15	Leather and related products		46.78	53.22	43.56	-12.1	22.2
16	Wood and cork		42.99	45.67	44.90	-5.9	1.7
17	Paper and paper products		105.86	106.65	105.89	-0.7	0.7
18	Printing and recording services		46.40	61.60	52.40	-24.7	17.6
19	Coke and refined petroleum products		133.17	108.65	92.73	22.6	17.2
20	Chemicals and chemical products		112.66	110.63	106.29	1.8	4.1
21	Basic pharmaceutical products and pharmaceutical preparations		128.65	114.26	108.56	12.6	5.3
22	Rubber and plastic products		100.02	99.04	101.01	1.0	-2.0
23	Other non-metallic mineral products		67.79	69.23	68.02	-2.1	1.8
24	Basic metals		165.13	166.11	123.88	-0.6	34.1
25	Fabricated metal products		101.88	98.59	88.62	3.3	11.2
26	Computers, electronic and optical products		103.78	106.11	100.29	-2.2	5.8
27	Electrical equipment		80.38	75.61	77.92	6.3	-3.0
28	Machinery and equipment n. e. c.		100.70	121.30	98.12	-17.0	23.6
29	Motor vehicles, trailers and semi-trailers		104.61	84.07	44.42	24.4	89.3
30	Other transport equipment		76.56	87.11	80.00	-12.1	8.9
31	Furniture		60.26	58.63	53.48	2.8	9.6
32	Other manufactured goods		109.61	108.65	97.98	0.9	10.9
33	Repair and installation services of machinery and equipment		54.41	60.05	56.41	-9.4	6.5
D	ELECTRICITY		92.09	91.95	77.87	0.1	18.1
35	Production and distribution of electricity		92.09	91.95	77.87	0.1	18.1
E	WATER SUPPLY		102.26	110.10	104.29	-7.1	5.6
36	Treatment and supply services of natural water		102.26	110.10	104.29	-7.1	5.6
MAIN INDUSTRIAL GROUPINGS							
1	Energy		100.35	93.90	85.57	6.9	9.7
2	Intermediate goods		102.37	104.30	95.61	-1.8	9.1
3	Capital goods		75.95	78.96	68.65	-3.8	15.0
4	Consumer Durables		63.33	62.74	60.48	0.9	3.7
5	Consumer Non-Durables		102.54	103.56	99.17	-1.0	4.4

* Provisional data

Note: The indices are rounded up to two decimal figures when published and percentage changes up to one decimal figure when published.

Table 2. Average indices of the period January – June and rates of change (%) of the Industrial Production Index
(Working day adjusted data, according to the real number of working days)

Base year: 2010=100.0

Code		Division	Average indices of the period Jan.-June			Rate of change (%)	
			2017*	2016	2015	2017/2016	2016/2015
OVERALL INDEX			94.55	89.20	87.35	6.0	2.1
B	MINING AND QUARRYING		69.65	63.67	79.69	9.4	-20.1
05	Mining of coal and lignite		64.09	49.22	80.60	30.2	-38.9
06	Extraction of crude petroleum and natural gas		103.54	130.36	57.89	-20.6	125.2
07	Mining of metal ores		76.57	83.46	75.90	-8.3	10.0
08	Other mining and quarrying products		76.06	81.68	81.26	-6.9	0.5
C	MANUFACTURING		97.99	94.04	89.93	4.2	4.6
10	Food		94.48	93.62	90.63	0.9	3.3
11	Beverages		85.16	95.65	91.56	-11.0	4.5
12	Tobacco products		100.27	127.73	113.70	-21.5	12.3
13	Textiles		68.79	70.10	66.94	-1.9	4.7
14	Wearing apparel		46.72	50.02	57.44	-6.6	-12.9
15	Leather and related products		51.34	52.51	48.32	-2.2	8.7
16	Wood and cork		41.96	41.82	37.12	0.3	12.6
17	Paper and paper products		99.62	99.31	103.35	0.3	-3.9
18	Printing and recording services		47.38	54.32	54.93	-12.8	-1.1
19	Coke and refined petroleum products		136.57	123.61	111.31	10.5	11.0
20	Chemicals and chemical products		109.48	109.33	102.56	0.1	6.6
21	Basic pharmaceutical products and pharmaceutical preparations		126.07	112.60	107.63	12.0	4.6
22	Rubber and plastic products		95.80	93.69	96.84	2.3	-3.3
23	Other non-metallic mineral products		61.97	62.18	56.40	-0.3	10.2
24	Basic metals		143.97	116.82	112.69	23.2	3.7
25	Fabricated metal products		91.02	82.58	79.91	10.2	3.3
26	Computers, electronic and optical products		113.72	93.90	130.81	21.1	-28.2
27	Electrical equipment		80.17	71.61	72.75	11.9	-1.6
28	Machinery and equipment n. e. c.		93.74	96.53	86.29	-2.9	11.9
29	Motor vehicles, trailers and semi-trailers		80.05	47.96	58.57	66.9	-18.1
30	Other transport equipment		66.21	76.25	71.81	-13.2	6.2
31	Furniture		49.36	51.98	46.51	-5.1	11.8
32	Other manufactured goods		94.29	92.24	90.91	2.2	1.5
33	Repair and installation services of machinery and equipment		48.05	48.31	51.92	-0.5	-7.0
D	ELECTRICITY		90.33	79.20	79.32	14.1	-0.2
35	Production and distribution of electricity		90.33	79.20	79.32	14.1	-0.2
E	WATER SUPPLY		94.21	95.84	96.17	-1.7	-0.3
36	Treatment and supply services of natural water		94.21	95.84	96.17	-1.7	-0.3
MAIN INDUSTRIAL GROUPINGS							
1	Energy		100.82	90.24	89.66	11.7	0.6
2	Intermediate goods		94.53	89.10	86.23	6.1	3.3
3	Capital goods		68.52	64.10	67.45	6.9	-5.0
4	Consumer Durables		58.27	55.57	56.02	4.9	-0.8
5	Consumer Non-Durables		93.77	95.48	91.51	-1.8	4.3

* Provisional data

Note: The indices are rounded up to two decimal figures when published and percentage changes up to one decimal figure when published.

Table 3. Monthly rate of change of the Industrial Production Index*(Working day adjusted data, according to the real number of working days)*

Base year: 2010=100.0

Code	Division	June 2017*	May 2017**	Rate of change (%) June 2017/ May 2017
OVERALL INDEX		99.36	95.02	4.6
B	MINING AND QUARRYING	64.35	68.31	-5.8
05	Mining of coal and lignite	51.21	53.31	-4.0
06	Extraction of crude petroleum and natural gas	90.53	91.94	-1.5
07	Mining of metal ores	86.88	91.85	-5.4
08	Other mining and quarrying products	82.34	90.30	-8.8
C	MANUFACTURING	104.42	102.32	2.1
10	Food	100.30	99.79	0.5
11	Beverages	110.52	99.12	11.5
12	Tobacco products	103.42	116.13	-10.9
13	Textiles	70.43	71.83	-1.9
14	Wearing apparel	41.96	48.42	-13.3
15	Leather and related products	46.78	54.80	-14.6
16	Wood and cork	42.99	50.81	-15.4
17	Paper and paper products	105.86	103.21	2.6
18	Printing and recording services	46.40	54.20	-14.4
19	Coke and refined petroleum products	133.17	138.59	-3.9
20	Chemicals and chemical products	112.66	112.32	0.3
21	Basic pharmaceutical products and pharmaceutical preparations	128.65	112.94	13.9
22	Rubber and plastic products	100.02	101.24	-1.2
23	Other non-metallic mineral products	67.79	67.56	0.3
24	Basic metals	165.13	148.09	11.5
25	Fabricated metal products	101.88	94.47	7.8
26	Computers, electronic and optical products	103.78	129.99	-20.2
27	Electrical equipment	80.38	88.46	-9.1
28	Machinery and equipment n. e. c.	100.70	104.58	-3.7
29	Motor vehicles, trailers and semi-trailers	104.61	81.68	28.1
30	Other transport equipment	76.56	62.86	21.8
31	Furniture	60.26	60.29	-0.1
32	Other manufactured goods	109.61	106.77	2.7
33	Repair and installation services of machinery and equipment	54.41	44.95	21.1
D	ELECTRICITY	92.09	77.79	18.4
35	Production and distribution of electricity	92.09	77.79	18.4
E	WATER SUPPLY	102.26	97.65	4.7
36	Treatment and supply services of natural water	102.26	97.65	4.7
MAIN INDUSTRIAL GROUPINGS				
1	Energy	100.35	93.95	6.8
2	Intermediate goods	102.37	100.30	2.1
3	Capital goods	75.95	70.30	8.0
4	Consumer Durables	63.33	69.77	-9.2
5	Consumer Non-Durables	102.54	98.57	4.0

* Provisional data **Revised data

Note: The indices are rounded up to two decimal figures when published and percentage changes up to one decimal figure when published.

Table 4. Monthly rate of change of the seasonally adjusted Industrial Production Index

Base year: 2010=100.0

Code	Division	June 2017*	May 2017**	Rate of change (%) June 2017/ May 2017
OVERALL INDEX		92.89	93.64	-0.8
B	MINING AND QUARRYING	60.32	66.87	-9.8
05	Mining of coal and lignite	49.51	56.49	-12.3
06	Extraction of crude petroleum and natural gas	93.33	92.36	1.1
07	Mining of metal ores	78.12	82.53	-5.3
08	Other mining and quarrying products	71.03	81.77	-13.1
C	MANUFACTURING	96.85	97.94	-1.1
10	Food	95.79	97.18	-1.4
11	Beverages	78.55	78.96	-0.5
12	Tobacco products	96.34	109.08	-11.7
13	Textiles	63.94	65.31	-2.1
14	Wearing apparel	44.05	42.47	3.7
15	Leather and related products	48.05	52.63	-8.7
16	Wood and cork	39.84	44.59	-10.7
17	Paper and paper products	95.97	98.34	-2.4
18	Printing and recording services	44.50	51.88	-14.2
19	Coke and refined petroleum products	135.76	139.10	-2.4
20	Chemicals and chemical products	102.23	101.58	0.6
21	Basic pharmaceutical products and pharmaceutical preparations	124.81	119.89	4.1
22	Rubber and plastic products	92.80	94.19	-1.5
23	Other non-metallic mineral products	59.95	61.73	-2.9
24	Basic metals	143.88	139.56	3.1
25	Fabricated metal products	86.77	87.79	-1.2
26	Computers, electronic and optical products	108.98	133.00	-18.1
27	Electrical equipment	74.93	80.47	-6.9
28	Machinery and equipment n. e. c.	88.10	96.25	-8.5
29	Motor vehicles, trailers and semi-trailers	94.86	89.93	5.5
30	Other transport equipment	70.95	64.78	9.5
31	Furniture	53.44	53.19	0.5
32	Other manufactured goods	95.46	95.53	-0.1
33	Repair and installation services of machinery and equipment	54.47	55.95	-2.7
D	ELECTRICITY	90.81	86.65	4.8
35	Production and distribution of electricity	90.81	86.65	4.8
E	WATER SUPPLY	93.25	95.12	-2.0
36	Treatment and supply services of natural water	93.25	95.12	-2.0
MAIN INDUSTRIAL GROUPINGS				
1	Energy	99.17	99.91	-0.7
2	Intermediate goods	91.92	92.84	-1.0
3	Capital goods	70.83	71.97	-1.6
4	Consumer Durables	57.49	61.73	-6.9
5	Consumer Non-Durables	92.05	92.36	-0.3

* Provisional data ** Revised data

Notes:

1. The indices are rounded up to two decimal figures when published and percentage changes up to one decimal figure when published.
2. The whole time-series with seasonally adjusted indices is recalculated every time a new observation is added in the time-series.

Table 5. Evolution of the Overall Industrial Production Index

(Working day adjusted data, according to the real number of working days)

Base year: 2010=100.0

Year and month	Overall Index	Monthly rate of change (%)	Annual rate of change (%)	12-month average indices (moving average)	Rate of change of the 12-month average indices (%)
2015:					
1	80.34	-4.3	0.4	87.80	-1.7
2	88.08	9.6	2.5	87.98	-1.5
3	90.99	3.3	5.9	88.40	-0.7
4	87.86	-3.4	0.8	88.46	-0.4
5	86.37	-1.7	-4.1	88.15	-0.8
6	90.46	4.7	-4.1	87.83	-0.7
7	95.71	5.8	-2.5	87.62	-0.9
8	87.87	-8.2	4.2	87.92	-0.2
9	92.93	5.8	3.0	88.15	0.5
10	85.68	-7.8	-1.7	88.02	0.3
11	88.16	2.9	2.6	88.20	0.3
12	89.77	1.8	6.9	88.68	1.0
Annual average	88.68	–	–	88.68	1.0
2016:					
1	83.61	-6.9	4.1	88.96	1.3
2	85.56	2.3	-2.9	88.75	0.9
3	87.73	2.5	-3.6	88.48	0.1
4	91.13	3.9	3.7	88.75	0.3
5	89.36	-1.9	3.5	89.00	1.0
6	97.82	9.5	8.1	89.61	2.0
7	100.94	3.2	5.5	90.05	2.8
8	88.29	-12.5	0.5	90.08	2.5
9	92.77	5.1	-0.2	90.07	2.2
10	91.60	-1.3	6.9	90.56	2.9
11	90.01	-1.7	2.1	90.72	2.8
12	91.98	2.2	2.5	90.90	2.5
Annual average	90.90	–	–	90.90	2.5
2017:					
1	89.57	-2.6	7.1	91.40	2.7
2	94.94	6.0	11.0	92.18	3.9
3	96.56	1.7	10.1	92.91	5.0
4	91.83	-4.9	0.8	92.97	4.8
5	95.02	3.5	6.3	93.44	5.0
6*	99.36	4.6	1.6	93.57	4.4

* Provisional data

Note: The indices are rounded up to two decimal figures when published and percentage changes up to one decimal figure when published.

Table 6. Monthly evolution of the seasonally adjusted Overall Industrial Production Index and Main Industrial Groupings

Base year: 2010=100.0

Year and month	Overall Index		Energy		Intermediate goods		Capital goods		Consumer durables		Consumer non-durables	
	Index	Monthly rate of change (%)	Index	Monthly rate of change (%)	Index	Monthly rate of change (%)	Index	Monthly rate of change (%)	Index	Monthly rate of change (%)	Index	Monthly rate of change (%)
2015:	1	88.02 1.0	95.76 3.2	79.24 -4.1	80.86 18.4	56.14 -7.4	89.00 -0.6					
	2	90.21 2.5	97.37 1.7	82.97 4.7	73.02 -9.7	55.66 -0.9	92.94 4.4					
	3	90.83 0.7	97.27 -0.1	85.10 2.6	76.36 4.6	57.59 3.5	92.47 -0.5					
	4	88.68 -2.4	94.30 -3.1	85.00 -0.1	73.14 -4.2	56.50 -1.9	89.69 -3.0					
	5	84.92 -4.2	82.97 -12.0	88.11 3.7	67.99 -7.0	55.76 -1.3	90.20 0.6					
	6	84.37 -0.6	84.42 1.7	85.91 -2.5	64.23 -5.5	55.03 -1.3	89.14 -1.2					
	7	86.07 2.0	98.50 16.7	76.03 -11.5	64.53 0.5	48.20 -12.4	85.19 -4.4					
	8	90.26 4.9	97.38 -1.1	85.70 12.7	58.07 -10.0	67.14 39.3	93.12 9.3					
	9	89.37 -1.0	100.20 2.9	78.19 -8.8	68.34 17.7	53.61 -20.2	91.60 -1.6					
	10	87.50 -2.1	96.22 -4.0	80.31 2.7	68.51 0.3	52.08 -2.9	88.44 -3.4					
	11	90.99 4.0	100.61 4.6	84.45 5.2	67.26 -1.8	56.58 8.7	91.02 2.9					
	12	92.92 2.1	100.45 -0.2	85.82 1.6	71.29 6.0	72.10 27.4	95.12 4.5					
Annual average		88.68	95.46	83.07	69.47	57.20	90.66					
2016:	1	91.49 -1.5	99.01 -1.4	84.37 -1.7	64.22 -9.9	54.46 -24.5	95.96 0.9					
	2	87.35 -4.5	88.96 -10.2	85.61 1.5	65.11 1.4	51.66 -5.2	93.87 -2.2					
	3	87.20 -0.2	87.56 -1.6	87.02 1.7	66.98 2.9	53.76 4.1	93.39 -0.5					
	4	91.71 5.2	94.55 8.0	89.15 2.4	70.01 4.5	58.95 9.7	96.97 3.8					
	5	88.03 -4.0	92.88 -1.8	83.60 -6.2	69.32 -1.0	56.16 -4.7	91.53 -5.6					
	6	91.37 3.8	92.74 -0.2	93.66 12.0	73.52 6.1	56.90 1.3	93.39 2.0					
	7	90.96 -0.5	96.09 3.6	85.24 -9.0	74.34 1.1	58.09 2.1	94.87 1.6					
	8	91.40 0.5	96.90 0.8	91.37 7.2	76.97 3.5	58.72 1.1	88.92 -6.3					
	9	89.34 -2.2	98.05 1.2	84.63 -7.4	73.63 -4.3	54.56 -7.1	87.19 -1.9					
	10	93.58 4.7	103.36 5.4	86.88 2.7	74.56 1.3	56.17 3.0	92.70 6.3					
	11	92.67 -1.0	101.62 -1.7	87.15 0.3	75.85 1.7	54.36 -3.2	91.40 -1.4					
	12	94.96 2.5	110.07 8.3	84.89 -2.6	71.38 -5.9	58.41 7.5	90.72 -0.7					
Annual average		90.84	96.82	86.96	71.32	56.02	92.58					
2017:	1	97.24 2.4	113.58 3.2	90.87 7.0	74.84 4.8	51.98 -11.0	88.08 -2.9					
	2	96.83 -0.4	105.88 -6.8	93.86 3.3	78.16 4.4	58.19 12.0	93.45 6.1					
	3	95.73 -1.1	101.20 -4.4	94.80 1.0	75.21 -3.8	61.27 5.3	95.62 2.3					
	4	93.01 -2.8	100.43 -0.8	91.63 -3.3	69.57 -7.5	55.61 -9.2	91.41 -4.4					
	5	93.64 0.7	99.91 -0.5	92.84 1.3	71.97 3.4	61.73 11.0	92.36 1.0					
	6	92.89 -0.8	99.17 -0.7	91.92 -1.0	70.83 -1.6	57.49 -6.9	92.05 -0.3					

Notes:

1. The indices are rounded up to two decimal figures when published and percentage changes up to one decimal figure when published.
2. The whole time-series with seasonally adjusted indices is recalculated every time a new observation is added in the time-series.

METHODOLOGICAL NOTES

Generally	The Industrial Production Index (IPI) is compiled since 1959.
Purpose of the index	The IPI is an important business cycle indicator, which shows the monthly activity in the Mining and Quarrying, Manufacturing, Electricity and Water Supply divisions. More specifically, the objective of the Industrial Production Index is to compare the magnitude (volume) of the output in the current month with the corresponding output in any given period which is considered as base period. The IPI shows the evolution of the value added of the production factors cost, at constant prices.
Legal basis	The compilation of the IPI is governed by Council Regulation (EC) No 1165/98 concerning short-term statistics. Furthermore, the IPI is governed by Regulation (EC) No 1893/2006 of the European Parliament and of the Council, by Commission Regulation (EC) No 656/2007 and by Council Regulation (EC) No 451/2008.
Reference period	Month.
Base year	2010=100.0.
Revision	The IPI is a fixed base index. Pursuant to the provisions of Council Regulation No 1165/98 concerning short-term statistics, the index is updated every five (5) years, in years ending in 0 or 5.
Statistical classifications	At the level of branches of economic activities, the classification NACE Rev.2 of Eurostat was used (Regulation No 1893/2006), while at the level of main industrial groups, the allocation of two-digit and three-digit NACE Rev. 2 headings to categories of aggregate classification was used, in accordance with Council Regulation No 656/2007. At product level, the classification CPA 2008 of Eurostat was used, according to Council Regulation No 451/2008.
Geographical coverage	The Index covers the whole Country.
Coverage of economic activities	The index covers all the sections of industry, the main industrial groups, all levels of economic activities (divisions, groups, and classes) and the level of products.
Statistical survey	The data are collected from a sample of 1,338 enterprises. The survey covers 354 products and the measurement of the surveyed products is made in terms of output quantities or in terms of production value or turnover, according to the specific situation in each branch of economic activity.
Seasonal adjustment	Seasonal adjustment is the procedure followed to remove the impact of seasonality on the time-series (i.e. the impact of monthly effects, e.g. holidays, tourist period etc), in order to improve comparability over time. The method used is the TRAMO-SEATS method with the use of JDemetra+ 2.0.0. For the seasonal adjustment of the Industrial Production Index at 2-digit level of NACE Rev.2, at section level (B – Mining and Quarrying, C – Manufacturing, D – Electricity and E – Water Supply) and for the Main Industrial Groupings (MIGs), the direct approach is applied, namely each time-series is seasonally adjusted independently. For the overall Industrial Production Index, the indirect approach is applied, with the seasonally adjusted IPI being computed by aggregating the seasonally adjusted MIGs using appropriate weights.
Publication of data	The IPI with the new base year (2010) is released since August 2014, with June 2014 as the first reference month. Data with base year 2010=100.0 are available from January 2000 onwards.
References	More information about the methodology concerning the compilation and calculation of the index and for the time series is available on the website of the Hellenic Statistical Authority (ELSTAT) (http://www.statistics.gr/en/statistics/-/publication/DKT21/-).