



PRESS RELEASE

SURVEY ON SECONDARY VOCATIONAL EDUCATION END OF SCHOOL YEAR 2014/2015

The Hellenic Statistical Authority (ELSTAT) announces data concerning Secondary Vocational Education deriving from the relevant survey for the end of the school year 2014/2015. The survey findings can be summarized as follows:

- The **school units**, which were surveyed during the school year 2014/2015, amounted to 536 (Vocational Upper Secondary Education Schools-EPAL, Vocational Schools-EPAS and Vocational Training Schools-SEK of all Ministries) in comparison with 562 (Vocational Upper Secondary Education Schools-EPAL, Vocational Schools-EPAS of all Ministries) in the school year 2013/2014 (Table 2).
- **Teaching staff** numbered 13,463 persons during the school year 2014/2015 (EPAL, EPAS and SEK of all Ministries) in comparison with 15,489 persons (EPAL and EPAS of all Ministries) in the school year 2013/2014 (Table 2).
- **The number of pupils enrolled** in the school year 2014/2015 amounted to 101,761 (EPAL, EPAS and SEK of all Ministries), compared with 109,917 (EPAL and EPAS of all Ministries) in the school year 2013/2014 (Table 3).
- **The number of graduates** was 31,903 pupils in the school year 2014/2015 (EPAL, EPAS and SEK of all Ministries) in comparison with 38,484 pupils (EPAL and EPAS of all Ministries) in the school year 2013/2014 (Table 3).
- **The ratio of teaching staff to pupils**, for the school year 2014/2015, was 1 teacher for 7.6 pupils, while for the school year 2013/2014 the corresponding ratio was 1 to 7.1 (Tables 2 and 3).
- The **Region of Attiki** (Attica) accounted for 27.7% of the total pupil population of all the EPAS, EPAL and SEK in Greece (Table 3).

Information:

Social Statistics Division

Education Statistics Section

Evdokia Oikonomou, Antonis Kritikos, Maria kritikou

Tel: +30 213 135 2134, +30 213 135 2778, +30 213 135 2782

Fax: +30 213 135 2780

e-mail: evd.oikonomou@statistics.gr

a.kritikos@statistics.gr

m.kritikou@statistics.gr

More specifically, Table 1 and Chart 1 depict the evolution of pupil population in Secondary Vocational Education during the period 2005/2006 to 2014/2015.

Table 1
Evolution of pupil population in Secondary Vocational Education
2005/06 – 2014/15

School Year	Pupils Enrolled
2005/2006	124,141
2006/2007	110,622
2007/2008	108,729
2008/2009	108,010
2009/2010	110,771
2010/2011	113,658
2011/2012	121,008
2012/2013	123,989
2013/2014	109,917
2014/2015	101,761

Chart 1
Evolution of pupil population in Secondary Vocational Education
2005/06 – 2014/15

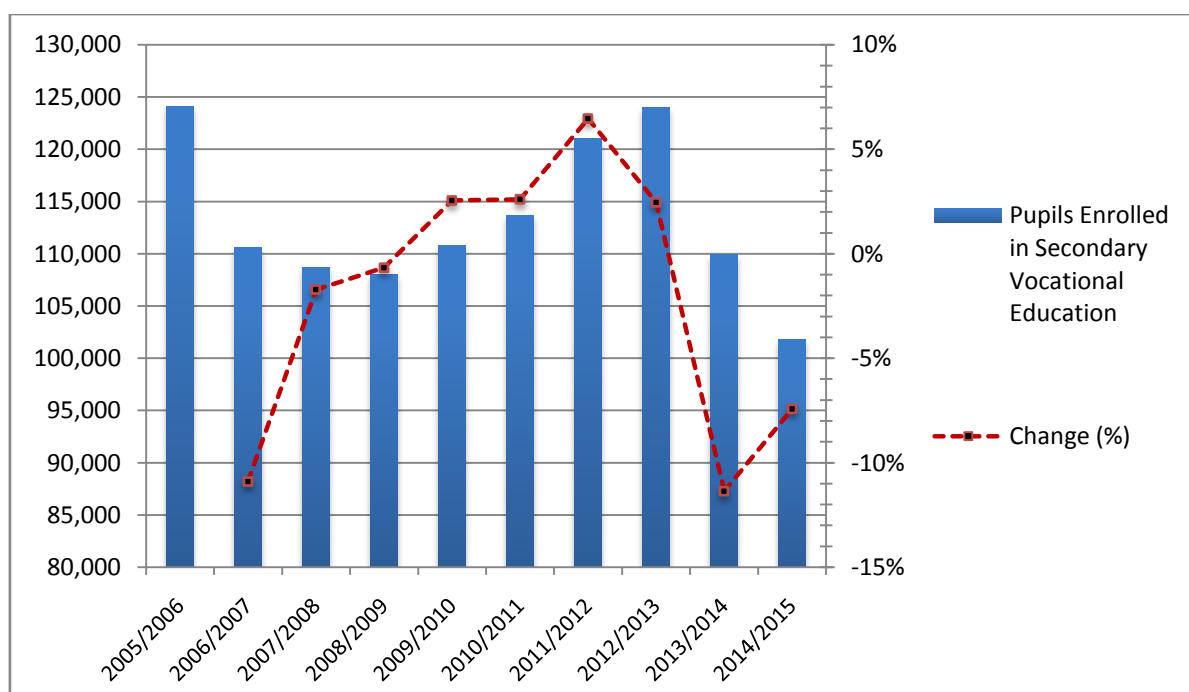


Table 2. Number of School Units and Teaching Staff¹

<i>By Type of School Unit</i>				
School Units	Number of School Units		Teaching Staff	
	2013/14	2014/15	2013/14	2014/15
EPAL and EPAS of the Ministry of Education, Research and Religious Affairs	454	399	13,581	11,484
EPAS of the Ministry of Labour, Social Security and Social Solidarity ²	49	51	1,487	1,654
EPAS of the Ministry of Rural Development and Food	6	6	42	51
EPAS of the Ministry of Tourism	8	8	92	66
EPAS of the Ministry of Health ³	45	46	287	189
SEK (Schools of Vocational Training) ⁴		26		19
TOTAL	562	536	15,489	13,463
<i>By Region</i>				
Region (NUTS 2)	Number of School Units		Teaching Staff	
	2013/14	2014/15	2013/14	2014/15
Anatoliki Makedonia & Thraki	38	40	997	935
Kentriki Makedonia	93	79	2,943	2,654
Dytiki Makedonia	22	23	727	616
Thessalia	44	42	1,199	1,104
Ipeiros	26	23	556	511
Ionian Islands	16	14	320	270
Dytiki Ellada	35	38	923	866
Stereia Ellada	30	29	775	630
Peloponnisos	37	34	781	730
Attiki	136	123	4,127	3,081
Voreio Aigaio	23	23	494	456
Notio Aigaio	27	31	633	658
Kriti	35	37	1,014	952
TOTAL	562	536	15,489	13,463

¹ Absent teachers are also included.

Absent teachers are the teachers with a fixed post in the school unit, who are absent for more than 20 days (due to illness, training, maternity leave, etc) and their replacement is pending, as well as the teachers who are seconded to other administrative posts of the Ministry of Education, Research and Religious Affairs or elsewhere.

² The number of school units seems to have increased by 2 units in 2014/2015 because 2 school units had not responded to ELSTAT's questionnaire for the 2013/2014 survey.

³ The number of school units seems to have increased by 1 unit in 2014/2015 because 1 school unit had not responded to ELSTAT's questionnaire for the 2013/2014 survey.

⁴ SEK belong to non formal education. They were established and operated for the first time in the school year 2014/2015 (by virtue of the Law 4186/2013) but their operation was discontinued in the school year 2016/2017.

Chart 2. Number of Schools by Region - NUTS 2 (School Year 2013/14)

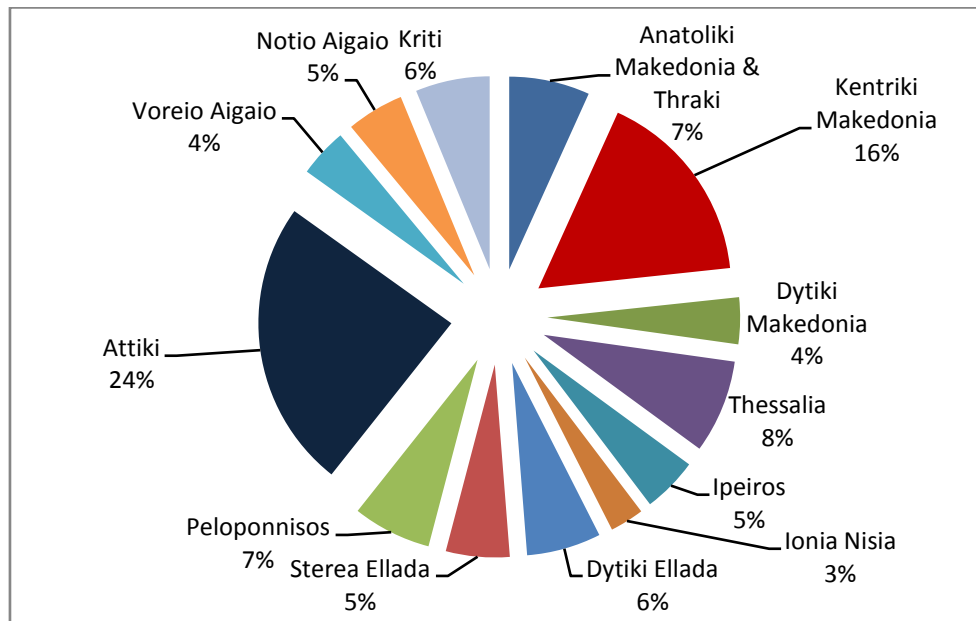


Chart 3. Number of Schools by Region - NUTS 2 (School Year 2014/15)

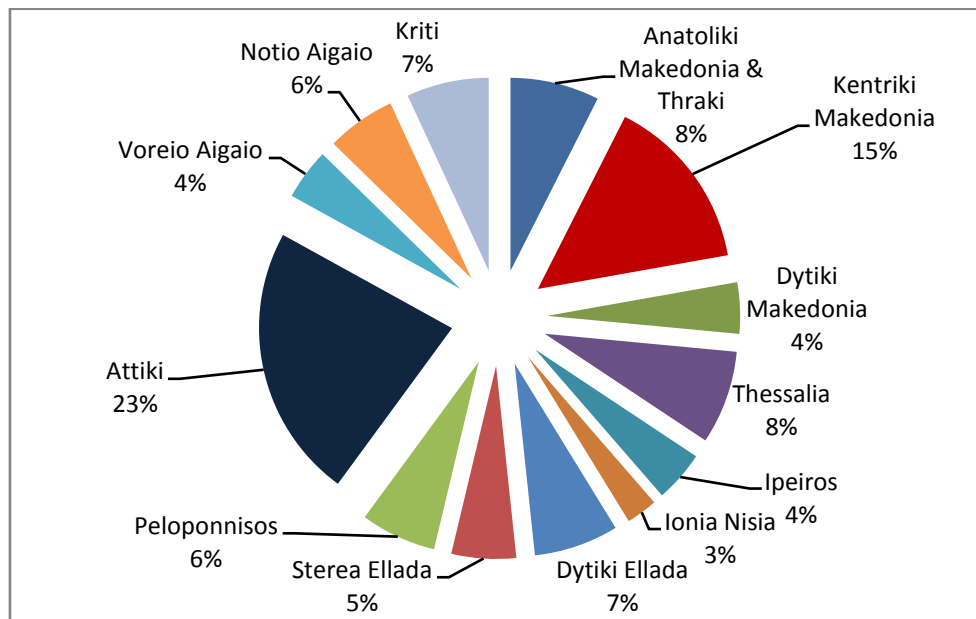


Chart 4. Teaching Staff by Region - NUTS 2 (School Year 2013/14)

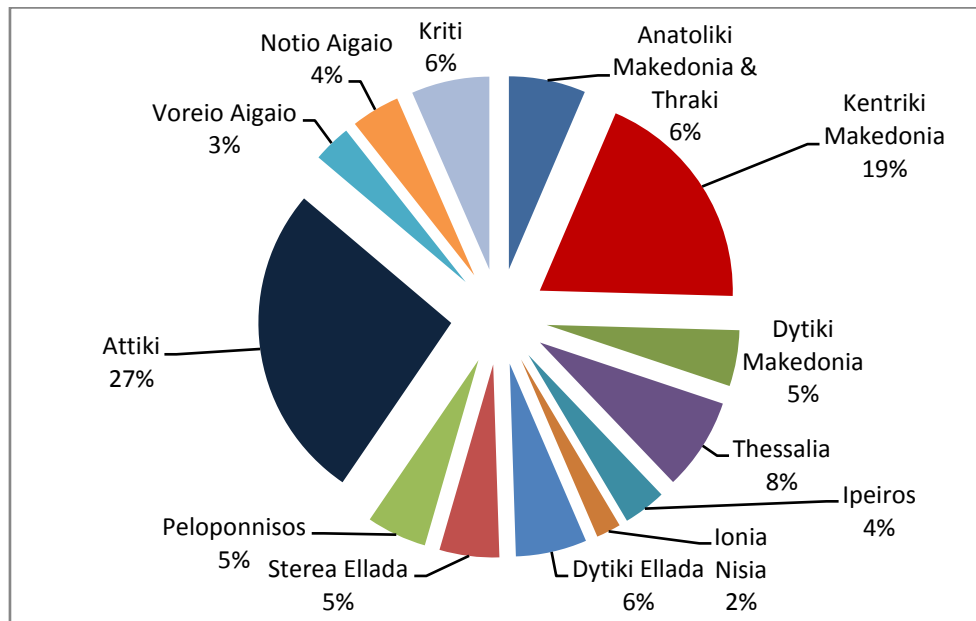


Chart 5. Teaching Staff by Region - NUTS 2 (School Year 2014/15)

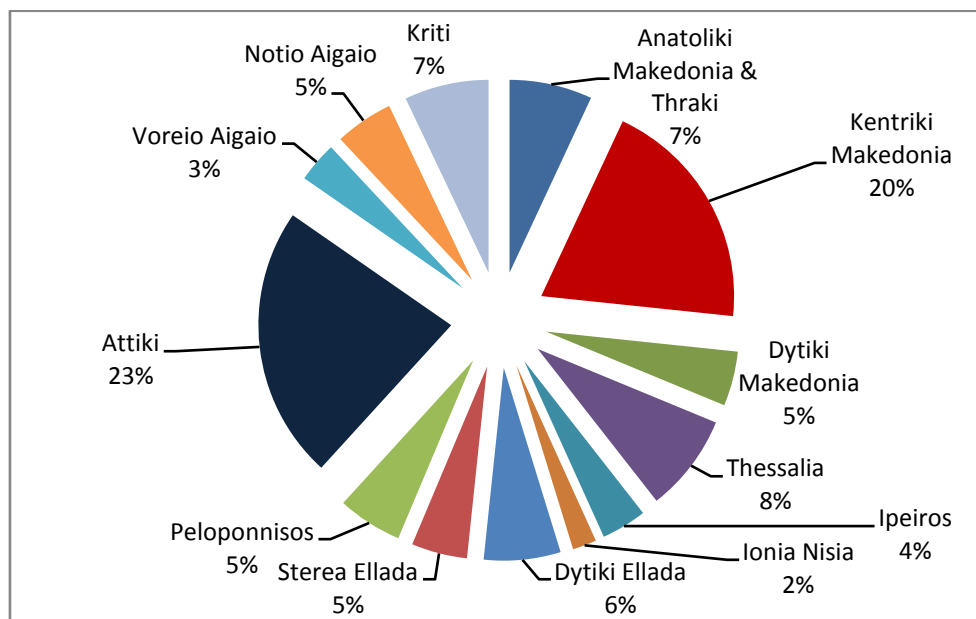


Table 3. Pupils enrolled and graduates by Type of School Unit and Region

<i>By Type of School Unit</i>				
School Units	Pupils Enrolled		Graduates	
	2013/14	2014/15	2013/14	2014/15
EPAL and EPAS of the Ministry of Education, Research and Religious Affairs	94,855	88,595	32,385	25,289
EPAS of the Ministry of Labour, Social Security and Social Solidarity	11,660	10,654	4,564	5,049
EPAS of the Ministry of Rural Development and Food	295	320	122	151
EPAS of the Ministry of Tourism	995	469	485	468
EPAS of the Ministry of Health	2,112	998	928	946
SEK (Schools of Vocational Training)		725		
TOTAL	109,917	101,761	38,484	31,903
<i>By Region</i>				
Region (NUTS 2)	Pupils Enrolled		Graduates	
	2013/14	2014/15	2013/14	2014/15
Anatoliki Makedonia & Thraki	7,480	7,017	2,478	2,430
Kentriki Makedonia	22,041	19,789	7,855	6,317
Dytiki Makedonia	4,817	4,895	1,711	1,721
Thessalia	7,681	7,192	2,755	2,317
Ipeiros	3,479	2,854	1,332	1,039
Ionia Nisia	1,966	1,954	667	504
Dytiki Ellada	6,777	6,584	2,272	2,036
Stereia Ellada	4,606	4,382	1,670	1,434
Peloponnisos	5,029	4,746	1,766	1,420
Attiki	31,913	28,198	11,265	8,425
Voreio Aigaio	2,702	2,763	890	854
Notio Aigaio	4,003	4,037	1,365	1,280
Kriti	7,423	7,350	2,458	2,126
TOTAL	109,917	101,761	38,484	31,903

Chart 6. Pupils Enrolled by Region - NUTS 2 (School Year 2013/14)

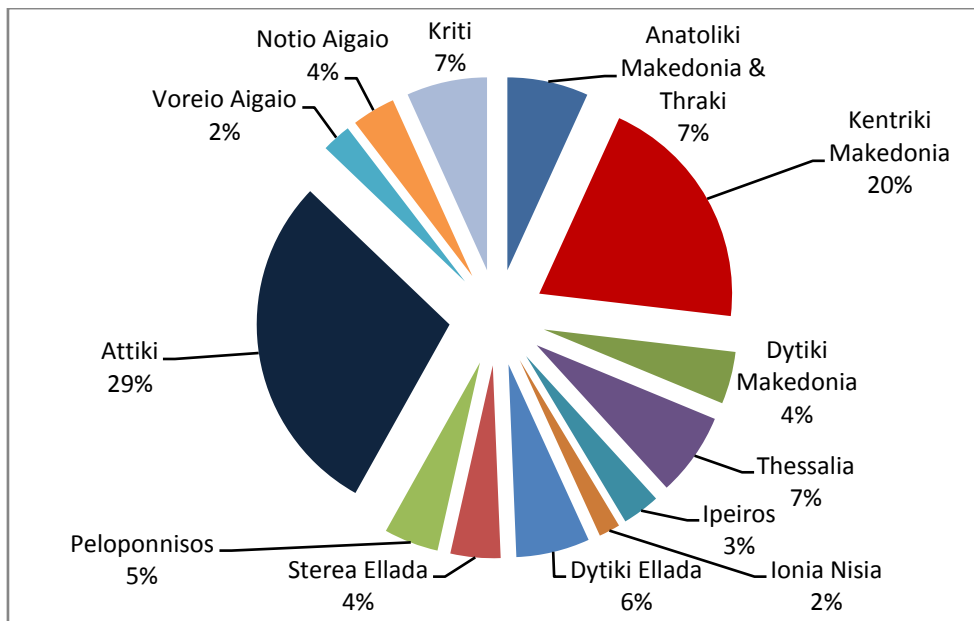


Chart 7. Pupils Enrolled by Region - NUTS 2 (School Year 2014/15)

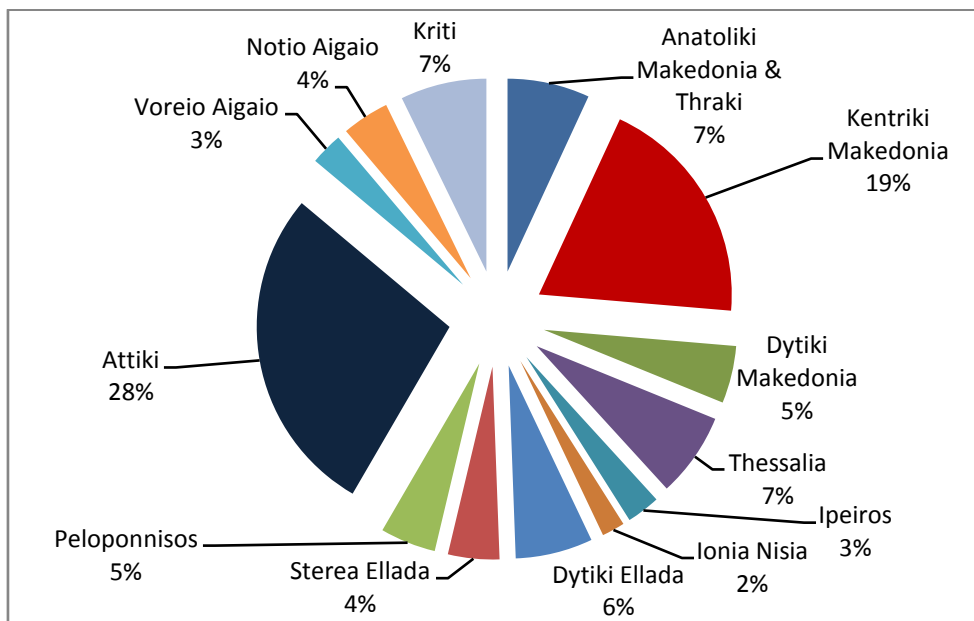


Chart 8. Graduates by Region - NUTS 2 (School Year 2013/14)

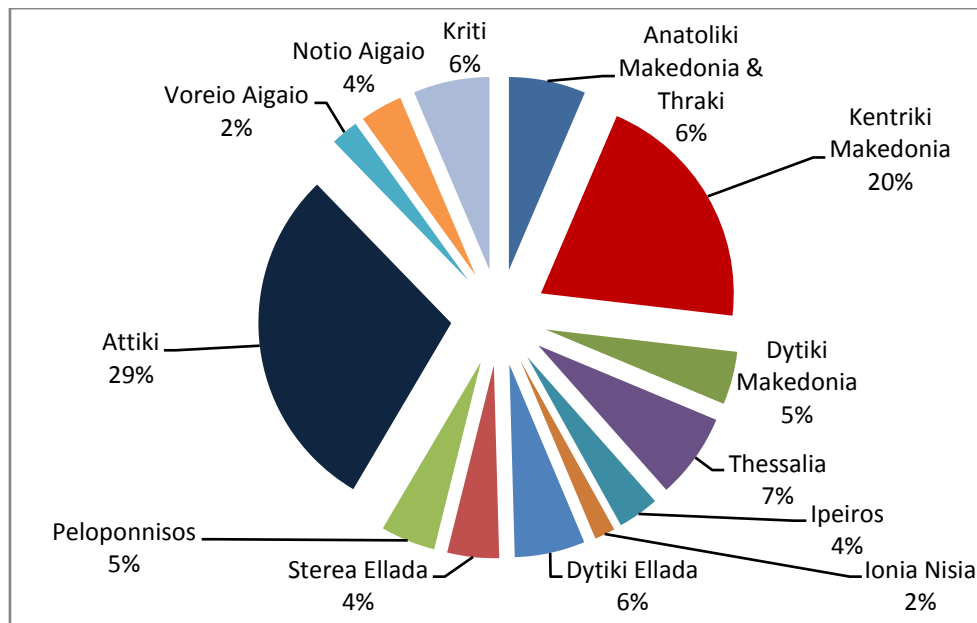
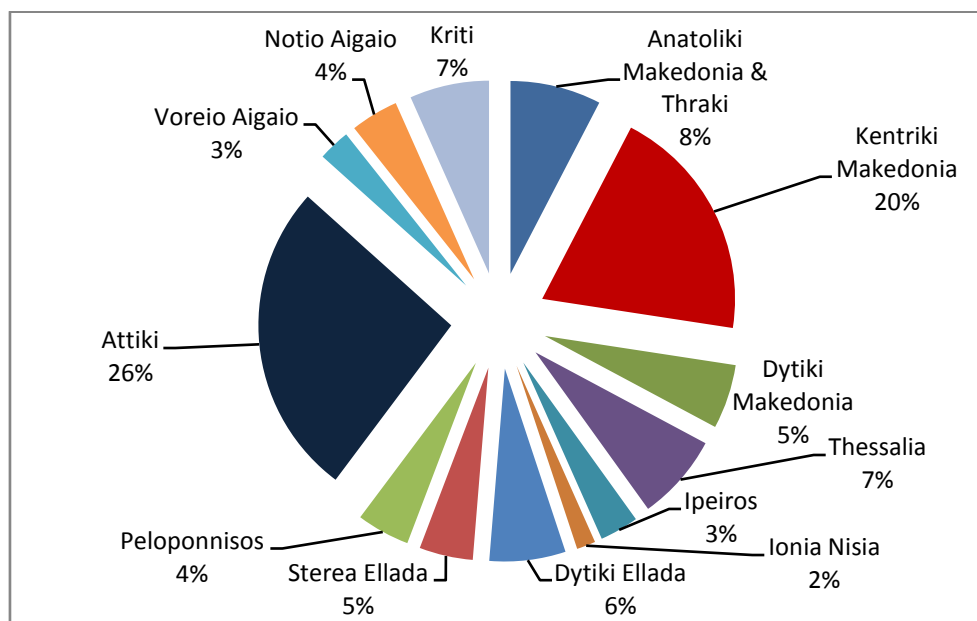


Chart 9. Graduates by Region - NUTS 2 (School Year 2014/15)



EXPLANATORY NOTES

Survey on Secondary Vocational Education	<p>Secondary Vocational Education (formal and non formal) includes:</p> <ul style="list-style-type: none"> - the Vocational Upper Secondary Schools (EPAL) - the Vocational Schools (EPAS) and - the Vocational Training Schools (SEK) <p>EPAL, EPAS and SEK are under the competency of the Ministry of Education, Research and Religious Affairs, the Ministry of Rural Development and Food, the Ministry of Health, the Ministry of Labour, Social Security and Social Solidarity and by the Ministry of Tourism. In the school year 2014/2015 the EPAS of the Ministry of Education, Research and Religious Affairs were abolished and some of them were treanformed to EPAL.</p> <p>The survey is conducted on a yearly basis, by all Member States of the European Union, aiming at collecting data on the number of pupils enrolled, the school units and the number of the teaching staff.</p>
Legal Frame	The surveys are conducted by virtue of Regulations (EU) No 452/2008 and 912/2013 of the European Parliament and of the Council.
Statistical Units	The statistical units are the school units.
Coverage	Greece total.
Dissemination of results	The data are posted on a yearly basis on the website of ELSTAT and are published in a relevant Press Release.
Reference period	<p>The data of the surveys refer to the end of school year 2014/2015.</p> <p>For comparability reasons, the data of the end of the previous school year 2013/2014 are also provided.</p>
Methodology and coverage	<p>Until the school year 2013/2014, the survey on Secondary Vocational Education used to be a census, yearly survey and it was by ELSTAT.</p> <p>For the school year 2014/2015 the data of the survey were collected as follows:</p> <ul style="list-style-type: none"> - As regards public school units of the Ministry of Education, Research and Religious Affairs (EPAL and EPAS), the data were extracted from the “live” e-platform “MySchool” of the Ministry of Education, Research and Religious Affairs. - As regards public school units (apart from those under the competency of the Ministry of Education, Research and Religious Affairs), data were collected via an annual census survey with the use of questionnaires. - As regards private school units, the data were collected via an annual census survey with the use of questionnaires.
References	<p>More information, such as tables with the survey’s results, samples of questionnaires etc, on the Survey on Secondary Vocational Education can be found on the webpage of ELSTAT www.statistics.gr and at the link: “Statistics”/ Population and Social Conditions / Education /Technical and Vocational Education”.</p>