



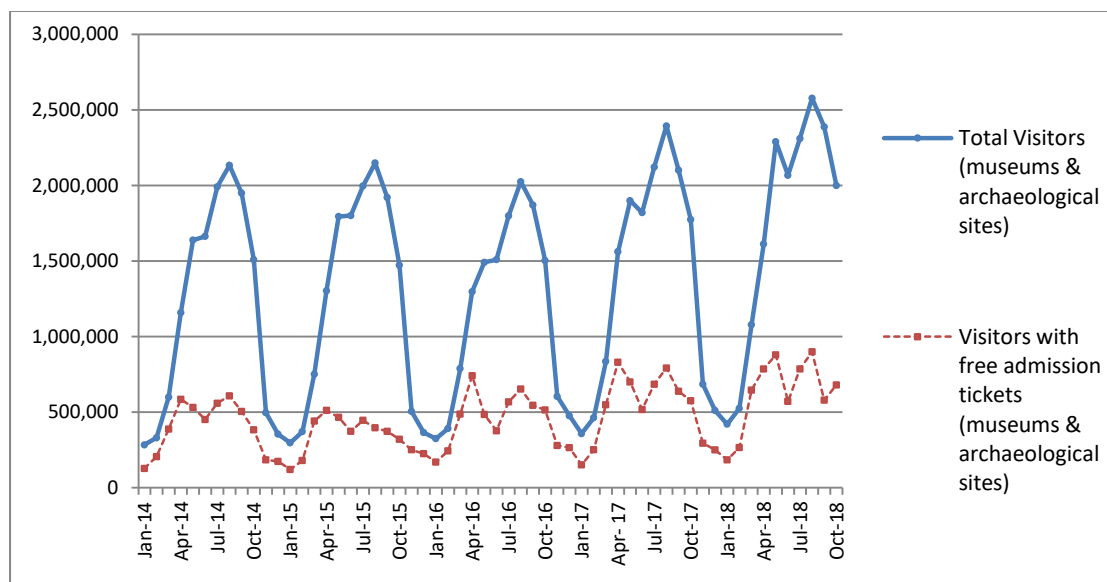
PRESS RELEASE

SURVEY ON MUSEUMS AND ARCHAEOLOGICAL SITES ATTENDANCE OCTOBER 2018

The Hellenic Statistical Authority (ELSTAT) announces the results of the *Survey on Museums and Archaeological Sites Attendance* for October 2018. More specifically:

- In October 2018 compared with the corresponding month of 2017, Museums experienced a 13.4% increase in the number of visitors and a 16.0% increase in the number of free admission visitors as well as a 12.8% increase in their receipts (Table 1),
- In October 2018 compared with the corresponding month of 2017, the number of visitors at Archaeological sites recorded an increase of 12.4%, while an increase of 19.4% was observed in the number of free admission visitors and a 8.6% increase in the corresponding receipts (Table 1),
- During the ten-month period from January to October 2018, an increase of 9.1% was observed in the number of visitors of Museums, while an increase of 6.7% was recorded in the number of free admission visitors and a 12.1% increase in the relevant receipts, in comparison with the corresponding period of 2017 (Table 2),
- As regards Archaeological sites, during the ten-month period from January to October 2018, an increase of 14.2% was recorded in the number of visitors, while a 12.5% increase was observed in the number of free admission visitors and a 12.4% increase in the relevant receipts, in comparison with the corresponding period of 2017 (Table 2),

Graph 1: Visitors of Museums and Archaeological sites (Jan 2013 – Oct 2018)



Information:

Social Statistics Division

Section of Culture and Sports statistics,

Argyri Pateraki (Tel: +30 213 1352129, e-mail: ar.pateraki@statistics.gr)

**TABLE 1: VISITORS OF MUSEUMS AND ARCHAEOLOGICAL SITES - TOTAL RECEIPTS
(OCTOBER 2017 & OCTOBER 2018)**

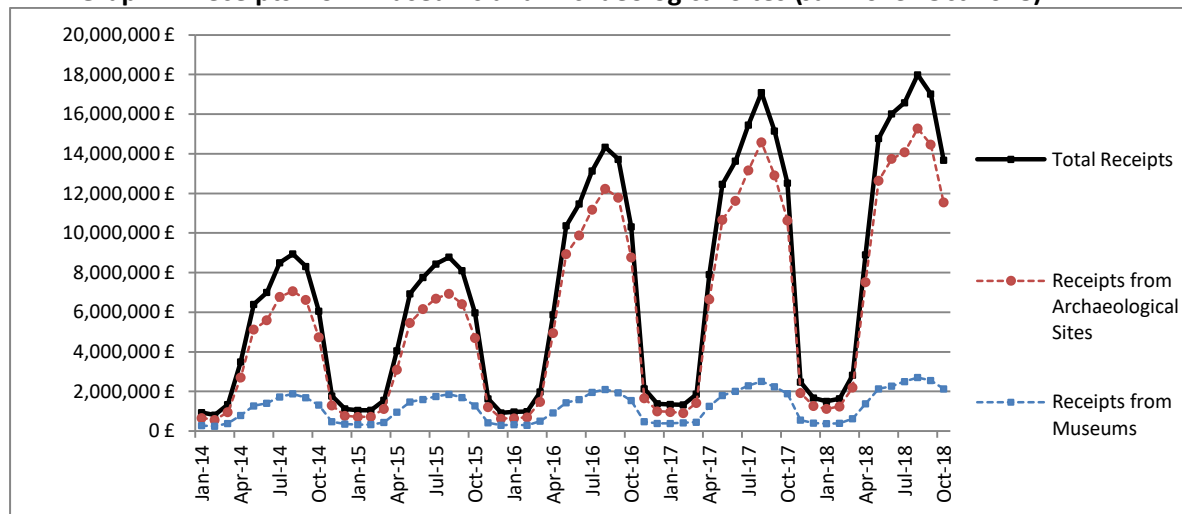
I. VISITORS			
Museums and Archaeological sites	2017	2018	Change 2018/2017
Total number of visitors (A+B)	1,774,246	1,999,134	12.7%
A. Museums (C+E)	526,443	596,868	13.4%
Acropolis Museum	160,603	187,883	17.0%
National Archaeological	54,007	61,337	13.6%
Ancient Olympia	17,511	16,550	-5.5%
Palace of the Grand Master (Rhodes)	28,599	29,854	4.4%
Herakleion Archaeological (Crete)	53,790	72,290	34.4%
White Tower	24,056	19,112	-20.6%
Delphi	21,402	27,027	26.3%
Other museums	166,475	182,815	9.8%
B. Archaeological Sites (D+F)	1,247,803	1,402,266	12.4%
Epidavros ⁽¹⁾	47,394	52,790	11.4%
The Acropolis of Mycenae & Atreus' Treasure	40,029	51,627	29.0%
The Acropolis of Athens ⁽²⁾	295,623	311,159	5.3%
Sounio	26,292	29,789	13.3%
The Acropolis of Lindos	57,609	61,290	6.4%
Royal Tombs of Vergina	15,487	17,154	10.8%
Ancient Olympia	60,858	52,388	-13.9%
Knossos (Crete)	83,266	105,182	26.3%
Phaistos (Crete)	14,442	17,365	20.2%
Ancient Korinthos ⁽¹⁾	21,842	25,021	14.6%
Mystras ⁽¹⁾	11,779	14,322	21.6%
Delphi	35,805	39,913	11.5%
Other archaeological sites	537,377	624,266	16.2%
II. VISITORS WHO PAID TICKET			
	2017	2018	Change 2018/2017
Total number of visitors who paid ticket (C+D)	1,198,540	1,319,034	10.1%
C. Museums	311,548	347,592	11.6%
D. Archaeological sites	886,992	971,442	9.5%
III. VISITORS WITH FREE ADMISSION TICKETS			
	2017	2018	Change 2018/2017
Total number of visitors with free admission ticket (E+F)	575,706	680,100	18.1%
E. Museums	214,895	249,276	16.0%
F. Archaeological sites	360,811	430,824	19.4%
IV. RECEIPTS (euros)			
	2017	2018	Change 2018/2017
Total Receipts (G+H)	12,520,462.00	13,677,417.00	9.2%
G. Museums	1,887,236.00	2,129,703.00	12.8%
H. Archaeological sites	10,633,226.00	11,547,714.00	8.6%

⁽¹⁾ Flat rate ticket, valid both for the museum and the archaeological site.

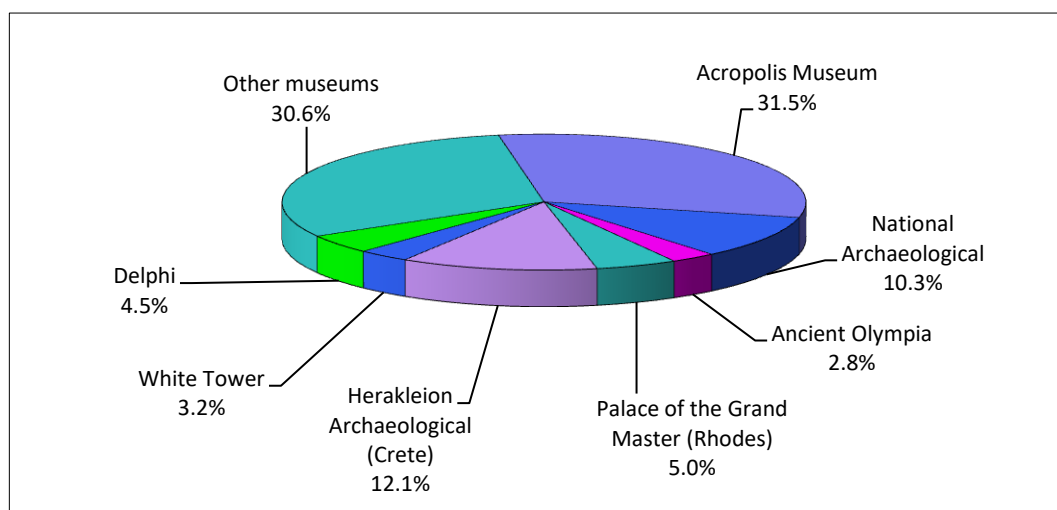
⁽²⁾ From May 2017 onwards, the data for the number of tickets in the archaeological site of the Acropolis of Athens include the tickets of the Ancient Theatre of Dionysos.

The following graphs depict the evolution of the receipts (Graph 2), as well as the number of visitors by Museum and Archaeological Site (Graphs 3 and 4, respectively),

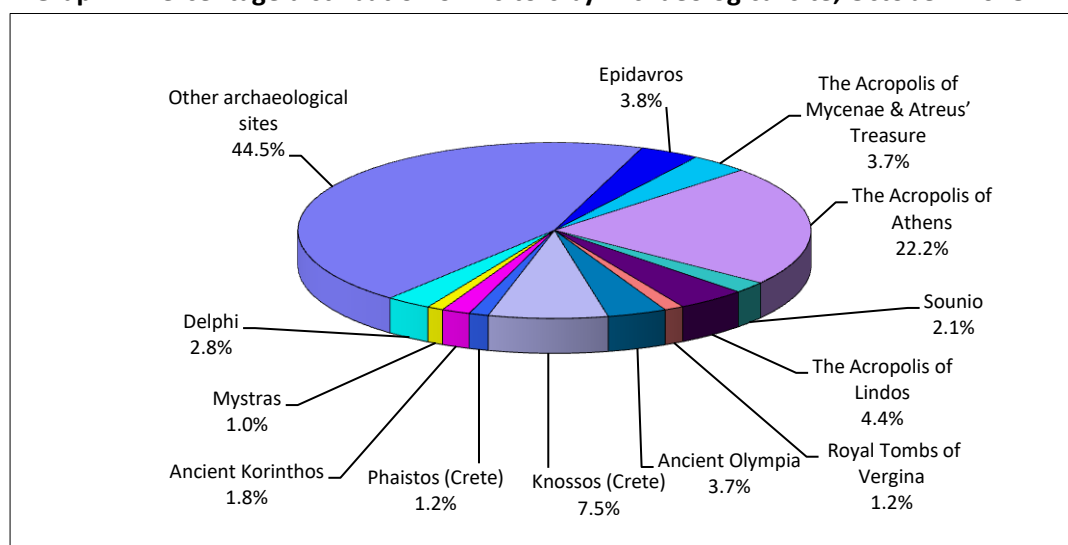
Graph 2: Receipts from Museums and Archaeological Sites (Jan 2013- Oct 2018)



Graph 3: Percentage distribution of Visitors by Museum, October 2018



Graph 4: Percentage distribution of Visitors by Archaeological site, October 2018



**TABLE 2: VISITORS OF MUSEUMS AND ARCHAEOLOGICAL SITES - TOTAL RECEIPTS
(2016, 2017 AND JANUARY-OCTOBER 2017 & 2018)**

I. VISITORS					
Museums and Archaeological sites	2016	2017	JANUARY-OCTOBER		change
			2017	2018	2018/2017
Total number of visitors (A+B)	14,080,639	16,524,557	15,328,005	17,266,259	12.6%
A. Museums (C+E)	4,515,966	5,191,781	4,698,538	5,125,526	9.1%
Acropolis Museum	1,406,096	1,593,362	1,428,037	1,585,527	11.0%
National Archaeological	447,093	545,555	489,279	524,744	7.2%
Ancient Olympia	124,136	145,118	137,841	147,932	7.3%
Palace of the Grand Master (Rhodes)	237,361	235,413	227,579	232,998	2.4%
Herakleion Archaeological (Crete)	394,915	426,191	404,660	529,263	30.8%
White Tower	290,192	268,149	236,232	189,556	-19.8%
Delphi	166,091	211,827	196,919	229,552	16.6%
Other museums	1,450,082	1,766,166	1,577,991	1,685,954	6.8%
B. Archaeological Sites (D+F)	9,564,673	11,332,776	10,629,467	12,140,733	14.2%
Epidavros ⁽¹⁾	375,437	469,060	446,245	523,397	17.3%
The Acropolis of Mycenae & Atreus' Treasure	342,854	412,397	389,313	470,125	20.8%
The Acropolis of Athens ⁽²⁾⁽⁴⁾	1,807,580	2,766,218	2,510,397	2,904,112	15.7%
Sounio ⁽⁴⁾	222,800	259,709	237,727	282,819	19.0%
The Acropolis of Lindos	421,070	441,012	437,343	484,873	10.9%
Royal Tombs of Vergina	186,627	203,632	179,627	196,449	9.4%
Ancient Olympia	423,424	481,252	458,065	454,847	-0.7%
Knossos (Crete)	611,455	634,710	612,119	814,701	33.1%
Phaistos (Crete)	77,071	95,182	83,186	118,146	42.0%
Ancient Korinthos ⁽¹⁾	153,307	191,836	181,560	183,342	1.0%
Mystras ⁽¹⁾	114,293	125,549	119,665	138,922	16.1%
Delphi	290,705	345,804	320,118	377,644	18.0%
Other archaeological sites	4,538,050	4,906,415	4,654,102	5,191,356	11.5%
II. VISITORS WHO PAID TICKET					
	2016	2017	JANUARY-OCTOBER		change
			2017	2018	2018/2017
Total number of visitors who paid ticket (C+D)	8,749,957	10,288,448	9,637,304	10,987,411	14.0%
C. Museums	2,406,665	2,831,466	2,600,641	2,887,282	11.0%
D. Archaeological sites	6,343,292	7,456,982	7,036,663	8,100,129	15.1%
III. VISITORS WITH FREE ADMISSION TICKETS					
	2016	2017	JANUARY-OCTOBER		change
			2017	2018	2017/2016
Total number of visitors with free admission ticket (E+F)	5,330,682	6,236,109	5,690,701	6,278,848	10.3%
E. Museums	2,109,301	2,360,315	2,097,897	2,238,244	6.7%
F. Archaeological sites	3,221,381	3,875,794	3,592,804	4,040,604	12.5%
IV. RECEIPTS (euros)					
	2016	2017	JANUARY-OCTOBER		change
			2017	2018	2017/2016
Total Receipts (G+H)	86,647,638.00	102,887,879.00	98,742,540.00	110,907,286.00	12.3%
G. Museums	13,448,464.00	16,175,121.00	15,217,711.00	17,059,369.00	12.1%
H. Archaeological sites	73,199,174.00	86,712,758.00	83,524,829.00	93,847,917.00	12.4%

⁽¹⁾ Flat rate ticket, valid both for the museum and the archaeological site.

⁽²⁾ From May 2017 onwards, the data for the number of tickets in the archaeological site of the Acropolis of Athens include the tickets of the Ancient Theatre of Dionysos.

⁽³⁾ The data on the number of visitors to the archaeological site of the Acropolis of Mycenae & Atreus' Treasure for May 2017 have been revised)

⁽⁴⁾ The data referring to the number of tickets for the archaeological sites of of the Acropolis of Athens and Sounion for September 2018 are provisional and are based on estimation.

EXPLANATORY NOTES

Survey on Museums and Archaeological Sites Attendance	The Survey on Museums and Archaeological Sites Attendance has been producing results since 1970, The survey collects data from the Archaeological Receipts Fund (ARF) of the Ministry of Culture and Sports concerning the number of visitors and the receipts from the tickets sold in the Museums and Archaeological sites of the country, The corresponding data for the Acropolis Museum are available from December 2009 onwards,
Legal Framework	The survey is conducted since 1970 on a regular basis and it produces results on a monthly and yearly basis, in compliance with the Joint Ministerial Decision 15189/B379/73,
Reference Period	01/10/2018 to 31/10/2018,
Methodology and Definitions	The Survey is conducted on a monthly basis from data collected from the Archaeological Receipts Fund (ARF) of the Ministry of Culture and Sports concerning on the number of visitors and the receipts from the tickets sold in the Museums and Archaeological sites of the country, ELSTAT tabulates the data on Museums and the Archaeological sites for the whole of the Country, by month and by year,

Information on ticket payment

- From January 2002 onwards, the number of Museums' visitors includes both the visitors who have bought a ticket and the visitors with free admission ticket, From 16-06-1996 onwards, the Museums and the Archaeological sites all over Greece have a paid admission for all the visitors, Greeks and foreigners, all over the year, except in the following days, which are free admission days:
- National Holidays (25th of March and 28th of October)
- The first Sunday every month during the five month period from 1 November to 31 March
- The 6th of March (in memory of Melina Merkouri)
- The 18th of April (International Monuments Day)
- The 18th of May (International Museums Day)
- The 5th of June (International Environment Day)
- The last weekend of September, annually (European Heritage Days)

Free admission tickets

The admission to Museums and Archaeological site is free for:

- Young people from EU-countries aged under 18 years, with current identification card to confirm their age,
- Students of Universities and of Higher and Technical Education Institutions or equivalent institutions of EU-countries, as well as of Tour Guide Training Institutes, with valid student identification card or International Student Identity Card (ISIC)
- Employees of the Hellenic Ministry of Culture, with valid professional identity card
- ICOM and ICOMOS cardholders
- Tour Guides with their current working identification card from the Ministry of Development
- Teachers accompanying pupils and students on primary, secondary and tertiary education institution tours
- Journalists with valid journalists' identification card
- Members of Associations and Societies of Friends of Museums and Archaeological Sites
- Official guests of the Greek Government, after relevant approval
- Escorts of blind persons and persons with disabilities
- Free admission cardholders
- Holders of the Culture Card

Number of flat rate tickets

From April 1999 onwards, in some museums and the nearby archaeological sites, in addition to the ordinary ticket, a new "flat rate ticket" was established, which is valid for both the museum and the nearby archaeological site, The total number of these flat rate tickets for **October 2018** was **120,069**.

More information on the Survey on Museums and Archaeological Sites Attendance and detailed time series are available on: <http://www.statistics.gr/en/statistics/-/publication/SCI21/->