



PRESS RELEASE

INDUSTRIAL PRODUCTION INDEX: July 2017, y-o-y increase of 1.7%

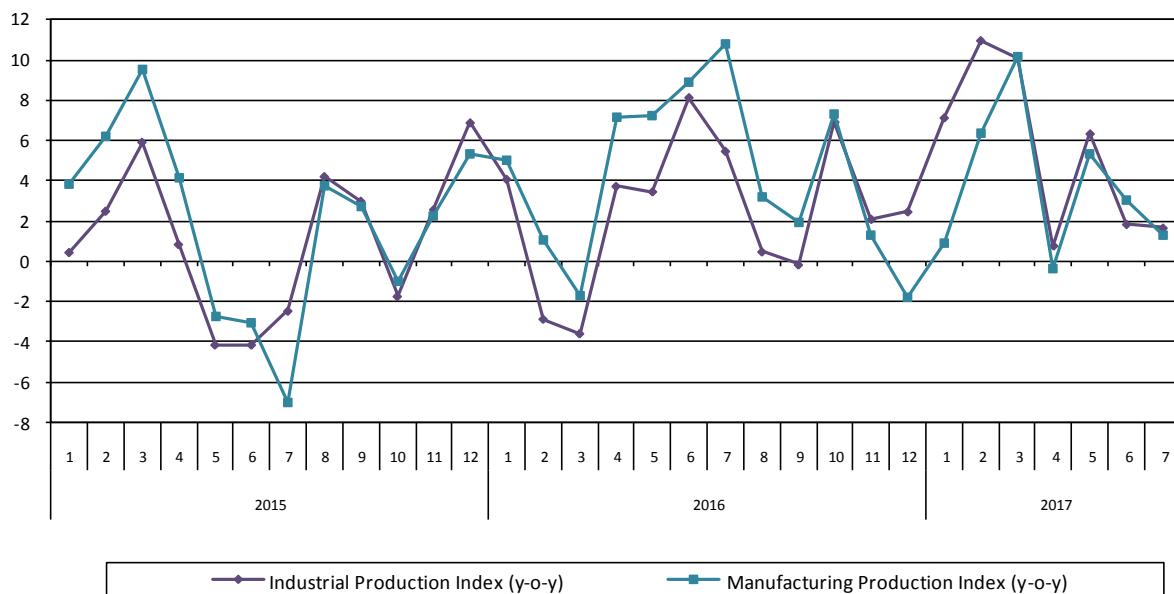
The evolution of the Industrial Production Index (IPI) with base year 2010=100.0 in July 2017, on the basis of provisional and working day adjusted data, is as follows:

The Overall Industrial Production Index in July 2017 recorded an increase of 1.7% compared with July 2016. The corresponding annual rate of change of the Overall IPI in July 2016 was 5.5% (Table 1).

The average Overall Industrial Production Index for the period from January to July 2017 recorded an increase of 5.3% compared with the average IPI of the period from January to July 2016 (Table 2).

The seasonally adjusted Overall Industrial Production Index in July 2017 recorded a decrease of 0.7% compared with June 2017 (Table 4).

Graph 1. Evolution of annual rates of change (y-o-y) of the Industrial Production Index and the Manufacturing Production Index (%)



Information:

Economic and Short-Term Indices Division
Production Indices Section

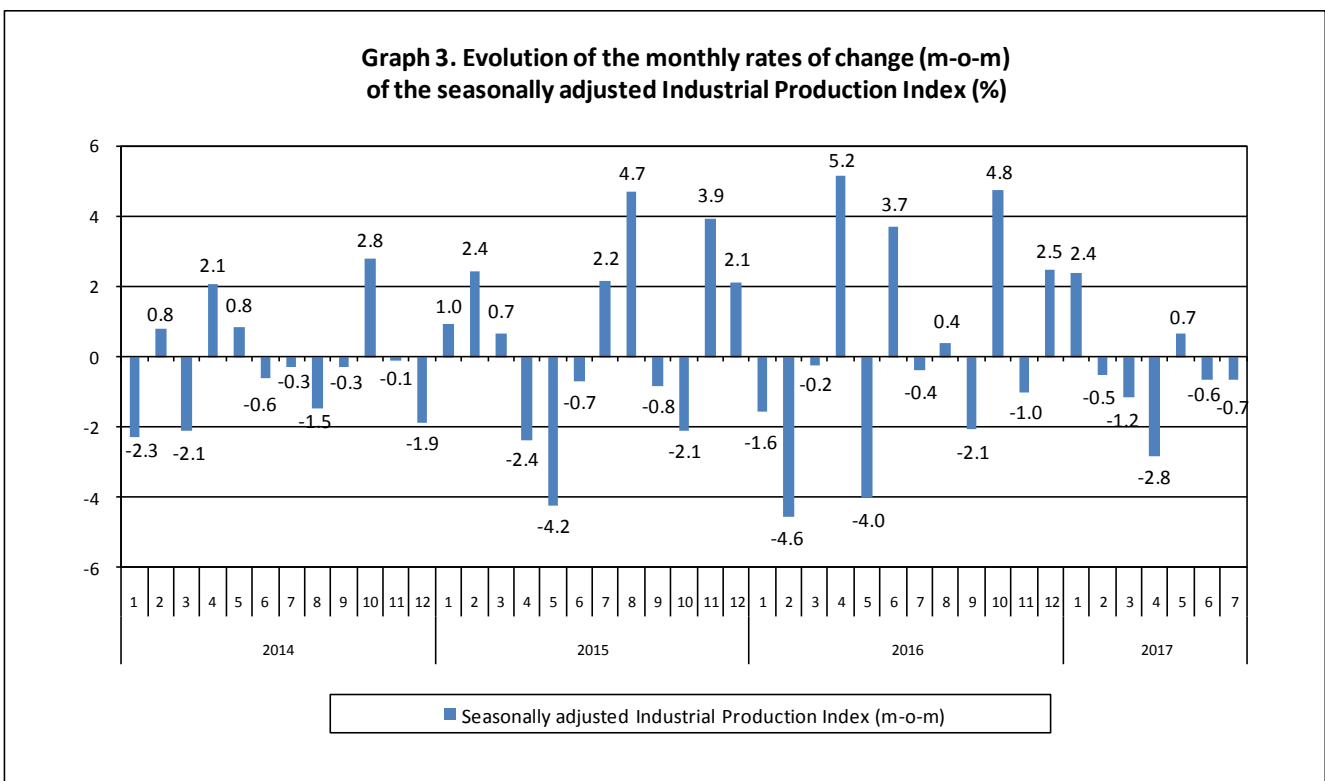
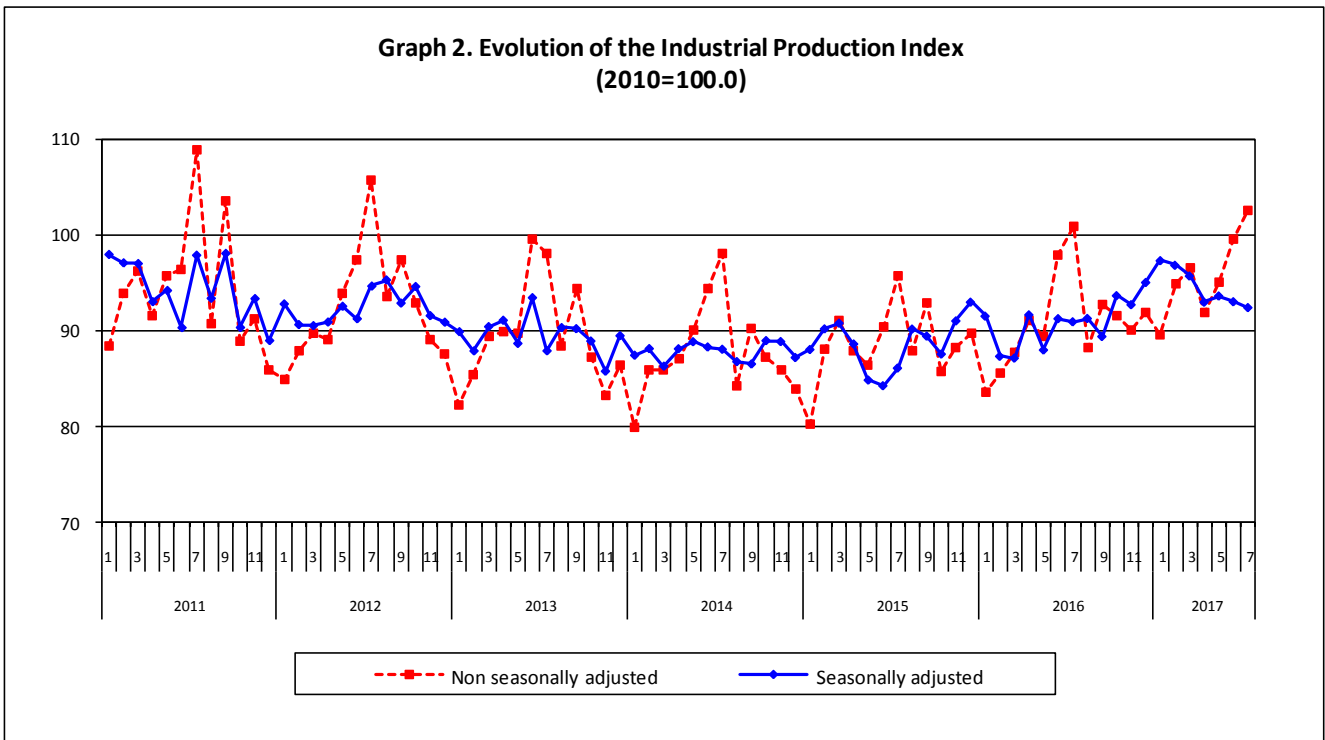
Diamantaki Aikaterini, Thymoglou Georgia

Tel: +30 213 135 2122, +30 213 135 2737

Fax: +30 213 135 2738

E-mail: a.diamantaki@statistics.gr, g.thymoglou@statistics.gr

The following graphs depict the evolution of the seasonally and non-seasonally adjusted Overall Industrial Production Index, as well as the monthly rates of change (m-o-m) of the seasonally adjusted index.



It should be noted that the time series with the seasonally adjusted indices is recalculated every time a new observation is added in the time series. Therefore, the seasonally adjusted data differ from the data published in the previous Press Release.

Evolution of the Industrial Production Index in July 2017

I. Annual changes: July 2017/ July 2016 (Table 1)

The 1.7% increase of the working day adjusted Overall IPI in July 2017, compared with the corresponding index in July 2016, is due to the annual changes of the sub-indices in the following industrial sections:

1. Increase of:

- 2.5% in the Mining and Quarrying Production Index.

The increase was the result of the annual change of the sub-index in the 2-digit division mining of coal and lignite.

- 1.3% in the Manufacturing Production Index.

The increase was the result of the annual changes of the sub-indices in the following 2-digit divisions: tobacco products, basic pharmaceutical products and pharmaceutical preparations, basic metals, machinery and equipment, motor vehicles, trailers and semi-trailers, repair and installation services of machinery and equipment.

- 3.8% in the Electricity Production Index.

2. Decrease of:

- 5.0% in the Water Supply Production Index.

II. Rates of change of the average index in the period January – July 2017 compared with the corresponding index of the period January – July 2016 (Table 2)

The 5.3% increase of the working day adjusted Overall IPI in the 7-month period January – July 2017, compared with the corresponding index in January – July 2016, is due to the corresponding rates of change of the sub-indices in the following industrial sections:

1. Increase of:

- 8.5% in the Mining and Quarrying Production Index.

- 3.8% in the Manufacturing Production Index.

- 12.2% in the Electricity Production Index.

2. Decrease of:

- 2.2% in the Water Supply Production Index.

III. Monthly changes: July 2017/ June 2017 (Table 4)

The 0.7% decrease of the seasonally adjusted Overall IPI in July 2017, compared with the corresponding index in June 2017, is due to the monthly changes of the sub-indices in the following industrial sections:

1. Decrease of:

- 1.3% in the Manufacturing Production Index.

2. Increase of:

- 8.3% in the Mining and Quarrying Production Index.

- 1.3% in the Electricity Production Index.

- 0.3% in the Water Supply Production Index.

The following graph depicts the evolution of the Industrial Production Index and the Industrial Sections Indices.

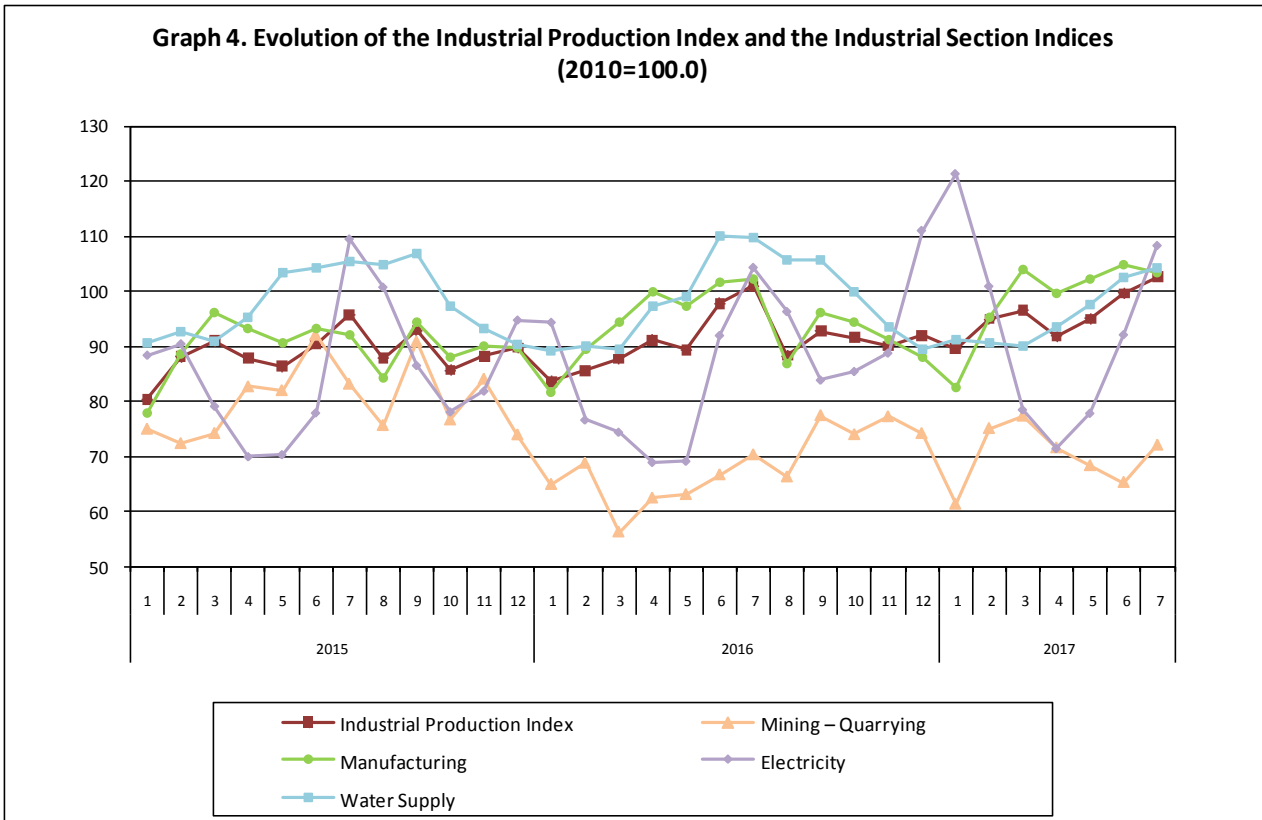


Table 1. Annual rates of change of the Industrial Production Index*(Working day adjusted data, according to the real number of working days)***Base year: 2010=100.0**

Code	Division	July			Rate of change (%)	
		2017*	2016	2015	2017/2016	2016/2015
OVERALL INDEX		102.61	100.94	95.71	1.7	5.5
B	MINING AND QUARRYING	72.05	70.30	83.14	2.5	-15.4
05	Mining of coal and lignite	61.03	55.03	84.43	10.9	-34.8
06	Extraction of crude petroleum and natural gas	127.80	135.46	62.34	-5.7	117.3
07	Mining of metal ores	84.11	85.08	88.64	-1.1	-4.0
08	Other mining and quarrying products	86.49	92.22	80.16	-6.2	15.0
C	MANUFACTURING	103.50	102.13	92.19	1.3	10.8
10	Food	106.22	106.72	96.80	-0.5	10.3
11	Beverages	122.10	123.13	111.28	-0.8	10.6
12	Tobacco products	102.99	94.13	116.73	9.4	-19.4
13	Textiles	61.13	67.25	61.91	-9.1	8.6
14	Wearing apparel	48.97	57.17	51.44	-14.3	11.1
15	Leather and related products	47.01	52.84	35.32	-11.0	49.6
16	Wood and cork	41.35	44.19	40.94	-6.4	8.0
17	Paper and paper products	99.16	101.06	97.22	-1.9	4.0
18	Printing and recording services	48.36	60.48	47.58	-20.1	27.1
19	Coke and refined petroleum products	123.84	126.45	118.76	-2.1	6.5
20	Chemicals and chemical products	111.52	110.86	92.04	0.6	20.5
21	Basic pharmaceutical products and pharmaceutical preparations	152.00	139.50	127.92	9.0	9.1
22	Rubber and plastic products	96.93	99.72	89.47	-2.8	11.5
23	Other non-metallic mineral products	64.30	70.60	50.58	-8.9	39.6
24	Basic metals	143.11	109.56	103.15	30.6	6.2
25	Fabricated metal products	88.10	96.55	84.08	-8.8	14.8
26	Computers, electronic and optical products	97.33	121.16	131.26	-19.7	-7.7
27	Electrical equipment	76.15	81.75	69.07	-6.9	18.4
28	Machinery and equipment n. e. c.	114.73	100.62	85.25	14.0	18.0
29	Motor vehicles, trailers and semi-trailers	100.69	77.90	41.85	29.3	86.2
30	Other transport equipment	71.68	78.67	73.04	-8.9	7.7
31	Furniture	51.64	53.36	43.87	-3.2	21.6
32	Other manufactured goods	108.29	107.53	96.78	0.7	11.1
33	Repair and installation services of machinery and equipment	59.68	46.80	49.44	27.5	-5.3
D	ELECTRICITY	108.31	104.33	109.49	3.8	-4.7
35	Production and distribution of electricity	108.31	104.33	109.49	3.8	-4.7
E	WATER SUPPLY	104.35	109.79	105.45	-5.0	4.1
36	Treatment and supply services of natural water	104.35	109.79	105.45	-5.0	4.1
MAIN INDUSTRIAL GROUPINGS						
1	Energy	107.75	106.33	109.05	1.3	-2.5
2	Intermediate goods	95.55	91.70	81.81	4.2	12.1
3	Capital goods	76.69	71.90	62.09	6.7	15.8
4	Consumer Durables	57.87	62.80	52.02	-7.8	20.7
5	Consumer Non-Durables	110.55	110.86	100.22	-0.3	10.6

* Provisional data

Note: The indices are rounded up to two decimal figures when published and percentage changes up to one decimal figure when published.

Table 2. Average indices of the period January – July and rates of change (%) of the Industrial Production Index
(Working day adjusted data, according to the real number of working days)

Base year: 2010=100.0

Code	Division	Average indices of the period Jan.-July			Rate of change (%)	
		2017*	2016	2015	2017/2016	2016/2015
OVERALL INDEX		95.74	90.88	88.54	5.3	2.6
B	MINING AND QUARRYING	70.13	64.62	80.19	8.5	-19.4
05	Mining of coal and lignite	63.65	50.05	81.15	27.2	-38.3
06	Extraction of crude petroleum and natural gas	107.00	131.09	58.53	-18.4	124.0
07	Mining of metal ores	77.65	83.69	77.72	-7.2	7.7
08	Other mining and quarrying products	78.03	83.18	81.11	-6.2	2.6
C	MANUFACTURING	98.82	95.20	90.25	3.8	5.5
10	Food	96.03	95.49	91.51	0.6	4.4
11	Beverages	90.48	99.57	94.38	-9.1	5.5
12	Tobacco products	100.66	122.93	114.13	-18.1	7.7
13	Textiles	67.65	69.69	66.22	-2.9	5.2
14	Wearing apparel	47.36	51.04	56.59	-7.2	-9.8
15	Leather and related products	50.86	52.56	46.46	-3.2	13.1
16	Wood and cork	42.55	42.16	37.67	0.9	11.9
17	Paper and paper products	99.55	99.56	102.47	-0.02	-2.8
18	Printing and recording services	47.60	55.20	53.88	-13.8	2.5
19	Coke and refined petroleum products	134.75	124.01	112.38	8.7	10.4
20	Chemicals and chemical products	109.85	109.54	101.06	0.3	8.4
21	Basic pharmaceutical products and pharmaceutical preparations	130.17	116.44	110.53	11.8	5.3
22	Rubber and plastic products	95.87	94.55	95.79	1.4	-1.3
23	Other non-metallic mineral products	62.39	63.38	55.57	-1.6	14.1
24	Basic metals	143.89	115.79	111.32	24.3	4.0
25	Fabricated metal products	90.95	84.57	80.50	7.5	5.1
26	Computers, electronic and optical products	111.38	97.80	130.87	13.9	-25.3
27	Electrical equipment	79.69	73.06	72.22	9.1	1.2
28	Machinery and equipment n. e. c.	96.88	97.11	86.14	-0.2	12.7
29	Motor vehicles, trailers and semi-trailers	82.99	52.24	56.18	58.9	-7.0
30	Other transport equipment	66.74	76.59	71.99	-12.9	6.4
31	Furniture	49.64	52.18	46.13	-4.9	13.1
32	Other manufactured goods	95.31	94.42	91.75	0.9	2.9
33	Repair and installation services of machinery and equipment	49.91	48.10	51.57	3.8	-6.7
D	ELECTRICITY	92.90	82.79	83.63	12.2	-1.0
35	Production and distribution of electricity	92.90	82.79	83.63	12.2	-1.0
E	WATER SUPPLY	95.70	97.83	97.50	-2.2	0.3
36	Treatment and supply services of natural water	95.70	97.83	97.50	-2.2	0.3
MAIN INDUSTRIAL GROUPINGS						
1	Energy	101.81	92.53	92.43	10.0	0.1
2	Intermediate goods	94.79	89.47	85.60	5.9	4.5
3	Capital goods	69.68	65.21	66.68	6.8	-2.2
4	Consumer Durables	58.28	56.61	55.45	3.0	2.1
5	Consumer Non-Durables	96.18	97.68	92.76	-1.5	5.3

* Provisional data

Note: The indices are rounded up to two decimal figures when published and percentage changes up to one decimal figure when published.

Table 3. Monthly rate of change of the Industrial Production Index*(Working day adjusted data, according to the real number of working days)*

Base year: 2010=100.0

Code	Division	July 2017*	June 2017**	Rate of change (%) July 2017/ June 2017
OVERALL INDEX		102.61	99.62	3.0
B	MINING AND QUARRYING	72.05	65.26	10.4
05	Mining of coal and lignite	61.03	51.21	19.2
06	Extraction of crude petroleum and natural gas	127.80	90.53	41.2
07	Mining of metal ores	84.11	86.88	-3.2
08	Other mining and quarrying products	86.49	85.73	0.9
C	MANUFACTURING	103.50	104.70	-1.1
10	Food	106.22	99.40	6.9
11	Beverages	122.10	110.83	10.2
12	Tobacco products	102.99	103.42	-0.4
13	Textiles	61.13	70.10	-12.8
14	Wearing apparel	48.97	44.21	10.7
15	Leather and related products	47.01	47.72	-1.5
16	Wood and cork	41.35	47.78	-13.5
17	Paper and paper products	99.16	105.82	-6.3
18	Printing and recording services	48.36	46.92	3.1
19	Coke and refined petroleum products	123.84	133.17	-7.0
20	Chemicals and chemical products	111.52	113.17	-1.5
21	Basic pharmaceutical products and pharmaceutical preparations	152.00	131.41	15.7
22	Rubber and plastic products	96.93	99.40	-2.5
23	Other non-metallic mineral products	64.30	68.37	-5.9
24	Basic metals	143.11	165.42	-13.5
25	Fabricated metal products	88.10	104.30	-15.5
26	Computers, electronic and optical products	97.33	103.78	-6.2
27	Electrical equipment	76.15	81.08	-6.1
28	Machinery and equipment n. e. c.	114.73	101.70	12.8
29	Motor vehicles, trailers and semi-trailers	100.69	104.54	-3.7
30	Other transport equipment	71.68	74.78	-4.2
31	Furniture	51.64	59.99	-13.9
32	Other manufactured goods	108.29	102.75	5.4
33	Repair and installation services of machinery and equipment	59.68	55.81	6.9
D	ELECTRICITY	108.31	92.09	17.6
35	Production and distribution of electricity	108.31	92.09	17.6
E	WATER SUPPLY	104.35	102.55	1.8
36	Treatment and supply services of natural water	104.35	102.55	1.8
MAIN INDUSTRIAL GROUPINGS				
1	Energy	107.75	100.37	7.4
2	Intermediate goods	95.55	103.18	-7.4
3	Capital goods	76.69	75.89	1.1
4	Consumer Durables	57.87	63.82	-9.3
5	Consumer Non-Durables	110.55	102.67	7.7

* Provisional data **Revised data

Note: The indices are rounded up to two decimal figures when published and percentage changes up to one decimal figure when published.

Table 4. Monthly rate of change of the seasonally adjusted Industrial Production Index

Base year: 2010=100.0

Code	Division	July 2017*	June 2017**	Rate of change (%) July 2017/ June 2017
OVERALL INDEX		92.42	93.03	-0.7
B	MINING AND QUARRYING	66.20	61.14	8.3
05	Mining of coal and lignite	55.39	49.65	11.5
06	Extraction of crude petroleum and natural gas	123.86	93.96	31.8
07	Mining of metal ores	79.61	78.29	1.7
08	Other mining and quarrying products	76.00	73.69	3.1
C	MANUFACTURING	95.68	96.96	-1.3
10	Food	96.18	95.34	0.9
11	Beverages	84.53	79.32	6.6
12	Tobacco products	105.08	96.31	9.1
13	Textiles	62.42	63.55	-1.8
14	Wearing apparel	45.59	45.71	-0.3
15	Leather and related products	48.73	48.27	0.9
16	Wood and cork	38.14	42.65	-10.6
17	Paper and paper products	96.08	95.93	0.2
18	Printing and recording services	49.22	45.07	9.2
19	Coke and refined petroleum products	125.71	135.45	-7.2
20	Chemicals and chemical products	101.44	102.60	-1.1
21	Basic pharmaceutical products and pharmaceutical preparations	124.57	127.03	-1.9
22	Rubber and plastic products	91.82	92.33	-0.6
23	Other non-metallic mineral products	58.95	60.37	-2.4
24	Basic metals	139.85	143.79	-2.7
25	Fabricated metal products	78.64	87.66	-10.3
26	Computers, electronic and optical products	98.38	107.76	-8.7
27	Electrical equipment	70.85	75.13	-5.7
28	Machinery and equipment n. e. c.	108.33	90.01	20.4
29	Motor vehicles, trailers and semi-trailers	98.31	95.10	3.4
30	Other transport equipment	69.57	69.67	-0.1
31	Furniture	50.91	53.03	-4.0
32	Other manufactured goods	93.01	91.14	2.1
33	Repair and installation services of machinery and equipment	61.67	56.92	8.4
D	ELECTRICITY	92.11	90.95	1.3
35	Production and distribution of electricity	92.11	90.95	1.3
E	WATER SUPPLY	93.67	93.44	0.3
36	Treatment and supply services of natural water	93.67	93.44	0.3
MAIN INDUSTRIAL GROUPINGS				
1	Energy	97.63	99.06	-1.4
2	Intermediate goods	89.27	92.16	-3.1
3	Capital goods	76.40	71.89	6.3
4	Consumer Durables	54.68	57.37	-4.7
5	Consumer Non-Durables	93.96	92.27	1.8

* Provisional data ** Revised data

Notes:

1. The indices are rounded up to two decimal figures when published and percentage changes up to one decimal figure when published.
2. The whole time-series with seasonally adjusted indices is recalculated every time a new observation is added in the time-series.

Table 5. Evolution of the Overall Industrial Production Index
(Working day adjusted data, according to the real number of working days)

Base year: 2010=100.0

Year and month	Overall Index	Monthly rate of change (%)	Annual rate of change (%)	12-month average indices (moving average)	Rate of change of the 12-month average indices (%)
2015: 1	80.34	-4.3	0.4	87.80	-1.7
2	88.08	9.6	2.5	87.98	-1.5
3	90.99	3.3	5.9	88.40	-0.7
4	87.86	-3.4	0.8	88.46	-0.4
5	86.37	-1.7	-4.1	88.15	-0.8
6	90.46	4.7	-4.1	87.83	-0.7
7	95.71	5.8	-2.5	87.62	-0.9
8	87.87	-8.2	4.2	87.92	-0.2
9	92.93	5.8	3.0	88.15	0.5
10	85.68	-7.8	-1.7	88.02	0.3
11	88.16	2.9	2.6	88.20	0.3
12	89.77	1.8	6.9	88.68	1.0
Annual average	88.68	–	–	88.68	1.0
2016: 1	83.61	-6.9	4.1	88.96	1.3
2	85.56	2.3	-2.9	88.75	0.9
3	87.73	2.5	-3.6	88.48	0.1
4	91.13	3.9	3.7	88.75	0.3
5	89.36	-1.9	3.5	89.00	1.0
6	97.82	9.5	8.1	89.61	2.0
7	100.94	3.2	5.5	90.05	2.8
8	88.29	-12.5	0.5	90.08	2.5
9	92.77	5.1	-0.2	90.07	2.2
10	91.60	-1.3	6.9	90.56	2.9
11	90.01	-1.7	2.1	90.72	2.8
12	91.98	2.2	2.5	90.90	2.5
Annual average	90.90	–	–	90.90	2.5
2017: 1	89.57	-2.6	7.1	91.40	2.7
2	94.94	6.0	11.0	92.18	3.9
3	96.56	1.7	10.1	92.91	5.0
4	91.83	-4.9	0.8	92.97	4.8
5	95.02	3.5	6.3	93.44	5.0
6	99.62	4.8	1.8	93.59	4.4
7*	102.61	3.0	1.7	93.73	4.1

* Provisional data

Note: The indices are rounded up to two decimal figures when published and percentage changes up to one decimal figure when published.

Table 6. Monthly evolution of the seasonally adjusted Overall Industrial Production Index and Main Industrial Groupings

Base year: 2010=100.0

Year and month	Overall Index		Energy		Intermediate goods		Capital goods		Consumer durables		Consumer non-durables		
	Index	Monthly rate of change (%)	Index	Monthly rate of change (%)	Index	Monthly rate of change (%)	Index	Monthly rate of change (%)	Index	Monthly rate of change (%)	Index	Monthly rate of change (%)	
2015:	1	88.05	1.0	95.76	3.2	79.33	-4.1	80.94	18.5	56.10	-7.4	89.01	-0.6
	2	90.20	2.4	97.34	1.6	82.92	4.5	73.16	-9.6	55.60	-0.9	92.96	4.4
	3	90.80	0.7	97.21	-0.1	84.97	2.5	76.53	4.6	57.50	3.4	92.51	-0.5
	4	88.63	-2.4	94.22	-3.1	84.82	-0.2	73.37	-4.1	56.36	-2.0	89.74	-3.0
	5	84.87	-4.2	82.89	-12.0	87.94	3.7	68.26	-7.0	55.62	-1.3	90.24	0.6
	6	84.28	-0.7	84.33	1.7	85.55	-2.7	64.54	-5.4	54.80	-1.5	89.20	-1.2
	7	86.11	2.2	98.69	17.0	76.33	-10.8	63.76	-1.2	48.73	-11.1	84.95	-4.8
	8	90.18	4.7	97.43	-1.3	85.38	11.9	57.90	-9.2	67.20	37.9	93.10	9.6
	9	89.45	-0.8	100.25	2.9	78.45	-8.1	68.08	17.6	53.70	-20.1	91.59	-1.6
	10	87.58	-2.1	96.27	-4.0	80.55	2.7	68.40	0.5	52.15	-2.9	88.44	-3.4
	11	91.03	3.9	100.62	4.5	84.60	5.0	67.24	-1.7	56.59	8.5	91.03	2.9
	12	92.98	2.1	100.48	-0.1	85.97	1.6	71.37	6.1	72.00	27.2	95.16	4.5
	Annual average	88.68		95.46		83.07		69.46		57.20		90.66	
2016:	1	91.53	-1.6	99.02	-1.4	84.46	-1.8	64.37	-9.8	54.44	-24.4	95.98	0.9
	2	87.34	-4.6	88.93	-10.2	85.52	1.3	65.34	1.5	51.58	-5.2	93.93	-2.1
	3	87.16	-0.2	87.50	-1.6	86.84	1.5	67.30	3.0	53.60	3.9	93.45	-0.5
	4	91.66	5.2	94.46	8.0	88.93	2.4	70.44	4.7	58.73	9.6	97.05	3.9
	5	88.00	-4.0	92.77	-1.8	83.43	-6.2	69.86	-0.8	55.90	-4.8	91.62	-5.6
	6	91.27	3.7	92.62	-0.2	93.21	11.7	74.19	6.2	56.51	1.1	93.47	2.0
	7	90.94	-0.4	96.30	4.0	85.64	-8.1	72.60	-2.2	59.09	4.6	94.45	1.0
	8	91.29	0.4	96.95	0.7	91.01	6.3	76.49	5.4	58.83	-0.4	88.90	-5.9
	9	89.41	-2.1	98.11	1.2	84.95	-6.7	73.05	-4.5	54.71	-7.0	87.18	-1.9
	10	93.66	4.8	103.41	5.4	87.16	2.6	74.32	1.7	56.27	2.9	92.69	6.3
	11	92.72	-1.0	101.63	-1.7	87.32	0.2	75.78	2.0	54.39	-3.4	91.43	-1.4
	12	95.03	2.5	110.10	8.3	85.07	-2.6	71.54	-5.6	58.32	7.2	90.75	-0.7
	Annual average	90.83		96.82		86.96		71.27		56.03		92.57	
2017:	1	97.31	2.4	113.60	3.2	90.97	6.9	75.18	5.1	51.95	-10.9	88.13	-2.9
	2	96.83	-0.5	105.84	-6.8	93.74	3.1	78.71	4.7	58.04	11.7	93.51	6.1
	3	95.71	-1.2	101.11	-4.5	94.58	0.9	75.92	-3.5	60.98	5.1	95.72	2.4
	4	92.98	-2.8	100.33	-0.8	91.40	-3.4	70.42	-7.2	55.32	-9.3	91.50	-4.4
	5	93.63	0.7	99.79	-0.5	92.65	1.4	72.92	3.6	61.29	10.8	92.49	1.1
	6	93.03	-0.6	99.06	-0.7	92.16	-0.5	71.89	-1.4	57.37	-6.4	92.27	-0.2
	7	92.42	-0.7	97.63	-1.4	89.27	-3.1	76.40	6.3	54.68	-4.7	93.96	1.8

Notes:

1. The indices are rounded up to two decimal figures when published and percentage changes up to one decimal figure when published.
2. The whole time-series with seasonally adjusted indices is recalculated every time a new observation is added in the time-series.

METHODOLOGICAL NOTES

Generally	The Industrial Production Index (IPI) is compiled since 1959.
Purpose of the index	The IPI is an important business cycle indicator, which shows the monthly activity in the Mining and Quarrying, Manufacturing, Electricity and Water Supply divisions. More specifically, the objective of the Industrial Production Index is to compare the magnitude (volume) of the output in the current month with the corresponding output in any given period which is considered as base period. The IPI shows the evolution of the value added of the production factors cost, at constant prices.
Legal basis	The compilation of the IPI is governed by Council Regulation (EC) No 1165/98 concerning short-term statistics. Furthermore, the IPI is governed by Regulation (EC) No 1893/2006 of the European Parliament and of the Council, by Commission Regulation (EC) No 656/2007 and by Council Regulation (EC) No 451/2008.
Reference period	Month.
Base year	2010=100.0.
Revision	The IPI is a fixed base index. Pursuant to the provisions of Council Regulation No 1165/98 concerning short-term statistics, the index is updated every five (5) years, in years ending in 0 or 5.
Statistical classifications	At the level of branches of economic activities, the classification NACE Rev.2 of Eurostat was used (Regulation No 1893/2006), while at the level of main industrial groups, the allocation of two-digit and three-digit NACE Rev. 2 headings to categories of aggregate classification was used, in accordance with Council Regulation No 656/2007. At product level, the classification CPA 2008 of Eurostat was used, according to Council Regulation No 451/2008.
Geographical coverage	The Index covers the whole Country.
Coverage of economic activities	The index covers all the sections of industry, the main industrial groups, all levels of economic activities (divisions, groups, and classes) and the level of products.
Statistical survey	The data are collected from a sample of 1,338 enterprises. The survey covers 354 products and the measurement of the surveyed products is made in terms of output quantities or in terms of production value or turnover, according to the specific situation in each branch of economic activity.
Seasonal adjustment	Seasonal adjustment is the procedure followed to remove the impact of seasonality on the time-series (i.e. the impact of monthly effects, e.g. holidays, tourist period etc), in order to improve comparability over time. The method used is the TRAMO-SEATS method with the use of JDemetra+ 2.0.0. For the seasonal adjustment of the Industrial Production Index at 2-digit level of NACE Rev.2, at section level (B – Mining and Quarrying, C – Manufacturing, D – Electricity and E – Water Supply) and for the Main Industrial Groupings (MIGs), the direct approach is applied, namely each time-series is seasonally adjusted independently. For the overall Industrial Production Index, the indirect approach is applied, with the seasonally adjusted IPI being computed by aggregating the seasonally adjusted MIGs using appropriate weights.
Publication of data	The IPI with the new base year (2010) is released since August 2014, with June 2014 as the first reference month. Data with base year 2010=100.0 are available from January 2000 onwards.
References	More information about the methodology concerning the compilation and calculation of the index and for the time series is available on the website of the Hellenic Statistical Authority (ELSTAT) (http://www.statistics.gr/en/statistics/-/publication/DKT21/).