



PRESS RELEASE

INDUSTRIAL PRODUCTION INDEX: June 2019, y-o-y increase of 0.3%

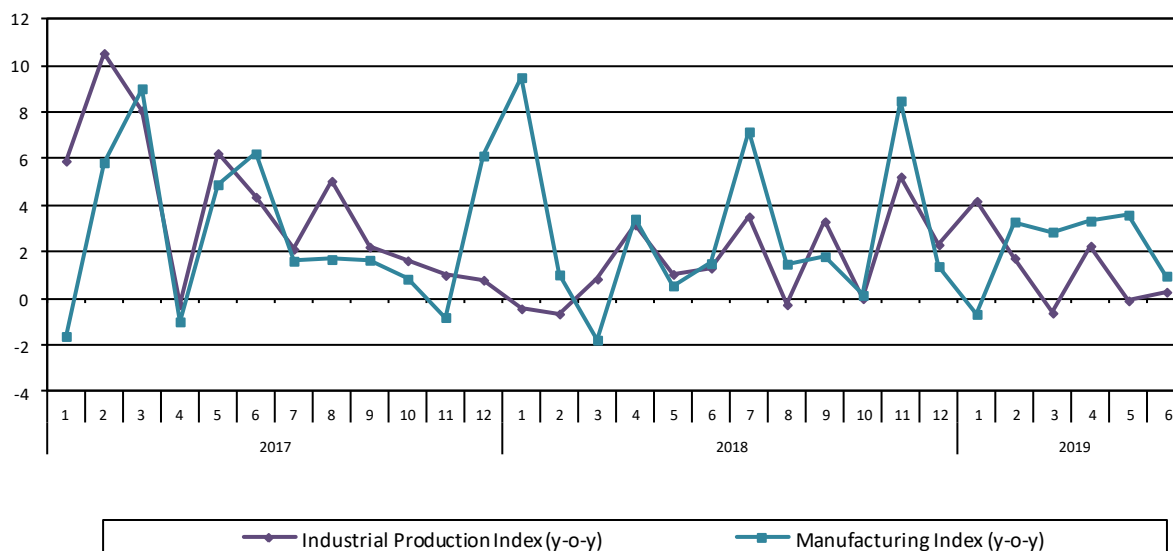
The Hellenic Statistical Authority announces the Industrial Production Index (IPI) with base year 2015=100.0 for June 2019, on the basis of provisional and working day adjusted data, as follows:

The Overall Industrial Production Index in June 2019 recorded an increase of 0.3% compared with June 2018. The corresponding annual rate of change of the Overall IPI in June 2018 was 1.3% (Table 1).

The average Overall Industrial Production Index for the period from January to June 2019 recorded an increase of 1.2% compared with the average IPI of the period from January to June 2018 (Table 2).

The seasonally adjusted Overall Industrial Production Index in June 2019 recorded an increase of 1.3% compared with May 2019 (Table 4).

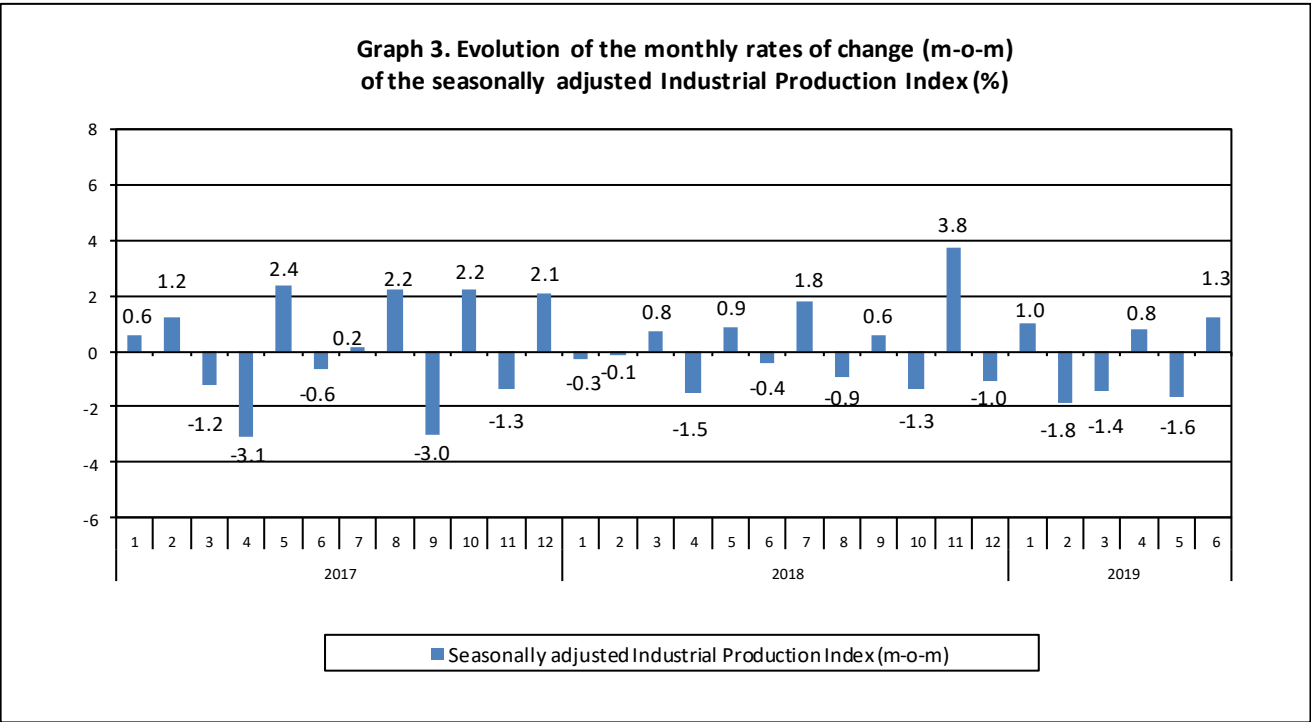
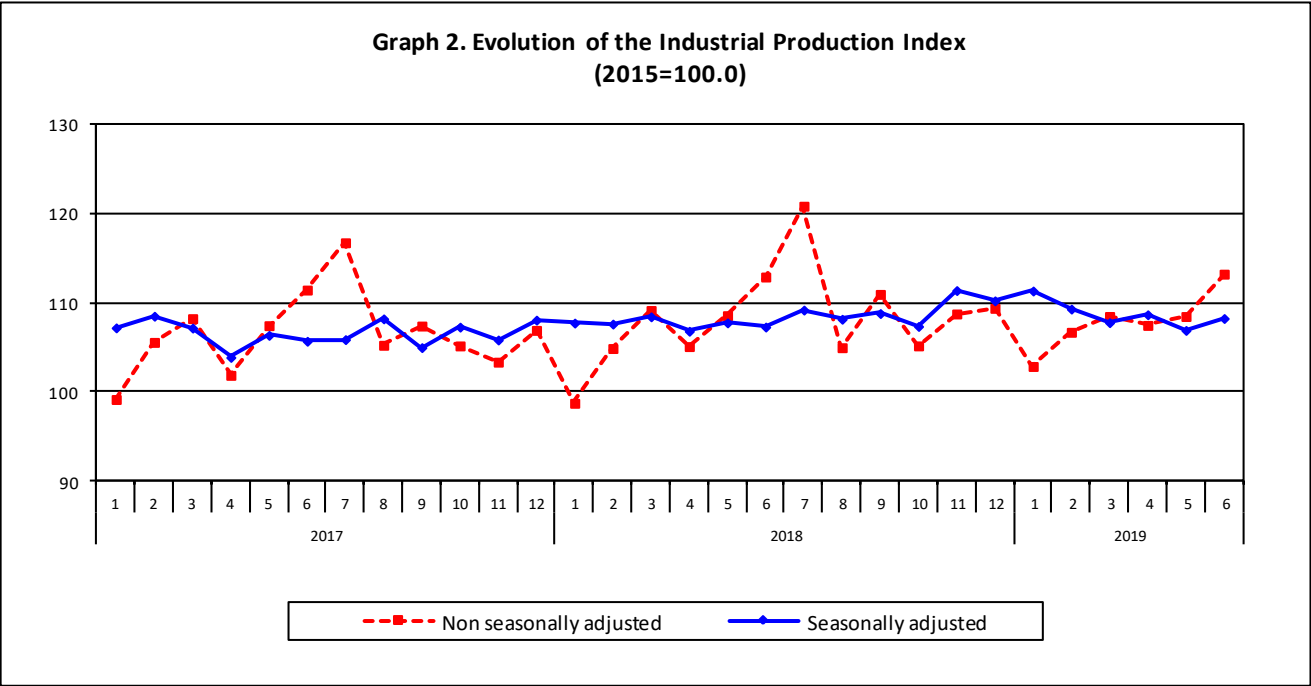
Graph 1. Evolution of annual rates of change (y-o-y) of the Industrial Production Index and the Manufacturing Index (%)



Information:

Business Statistics Division
Manufacture-Construction Indices and Industrial Products Section
Diamantaki Aikaterini, Thymoglou Georgia
Tel: +30 213 135 2122, +30 213 135 2737
Fax: +30 213 135 2738
E-mail: a.diamantaki@statistics.gr, g.thymoglou@statistics.gr

The following graphs depict the evolution of the seasonally and non-seasonally adjusted Overall Industrial Production Index, as well as the monthly rates of change (m-o-m) of the seasonally adjusted index.



It should be noted that the time series with the seasonally adjusted indices is recalculated every time a new observation is added in the time series. Therefore, the seasonally adjusted data differ from the data published in the previous Press Release.

Evolution of the Industrial Production Index in June 2019

I. Annual changes: June 2019/ June 2018 (Table 1)

The 0.3% increase of the working day adjusted Overall IPI in June 2019, compared with the corresponding index in June 2018, is due to the annual changes of the sub-indices in the following industrial sections:

1. Increase of:

- 1.0% in the Manufacturing Index. The increase was the result of the annual changes of the sub-indices in the following 2-digit divisions: tobacco products, basic pharmaceutical products and pharmaceutical preparations, computers, electronic and optical products, other transport equipment.
- 0.6% in the Water Supply Index.

2. Decrease of:

- 0.4% in the Mining and Quarrying Index.
- 2.2% in the Electricity Supply Index.

II. Rates of change of the average index in the period January – June 2019 compared with the corresponding index of the period January – June 2018 (Table 2)

The 1.2% increase of the working day adjusted Overall IPI in the 6-month period January – June 2019, compared with the corresponding index in January – June 2018, is due to the corresponding rates of change of the sub-indices in the following industrial sections:

1. Increase of:

- 2.3% in the Manufacturing Index.

2. Decrease of:

- 11.4% in the Mining and Quarrying Index.
- 0.9% in the Electricity Supply Index.
- 0.7% in the Water Supply Index.

III. Monthly changes: June 2019 / May 2019 (Table 4)

The 1.3% increase of the seasonally adjusted Overall IPI in June 2019, compared with the corresponding index in May 2019, is due to the monthly changes of the sub-indices in the following industrial sections:

1. Increase of:

- 4.8% in the Mining and Quarrying Index.
- 8.4% in the Electricity Supply Index.
- 1.6% in the Water Supply Index.

2. Decrease of:

- 2.0% in the Manufacturing Index.

The following graph depicts the evolution of the Industrial Production Index and the Industrial Sections Indices.

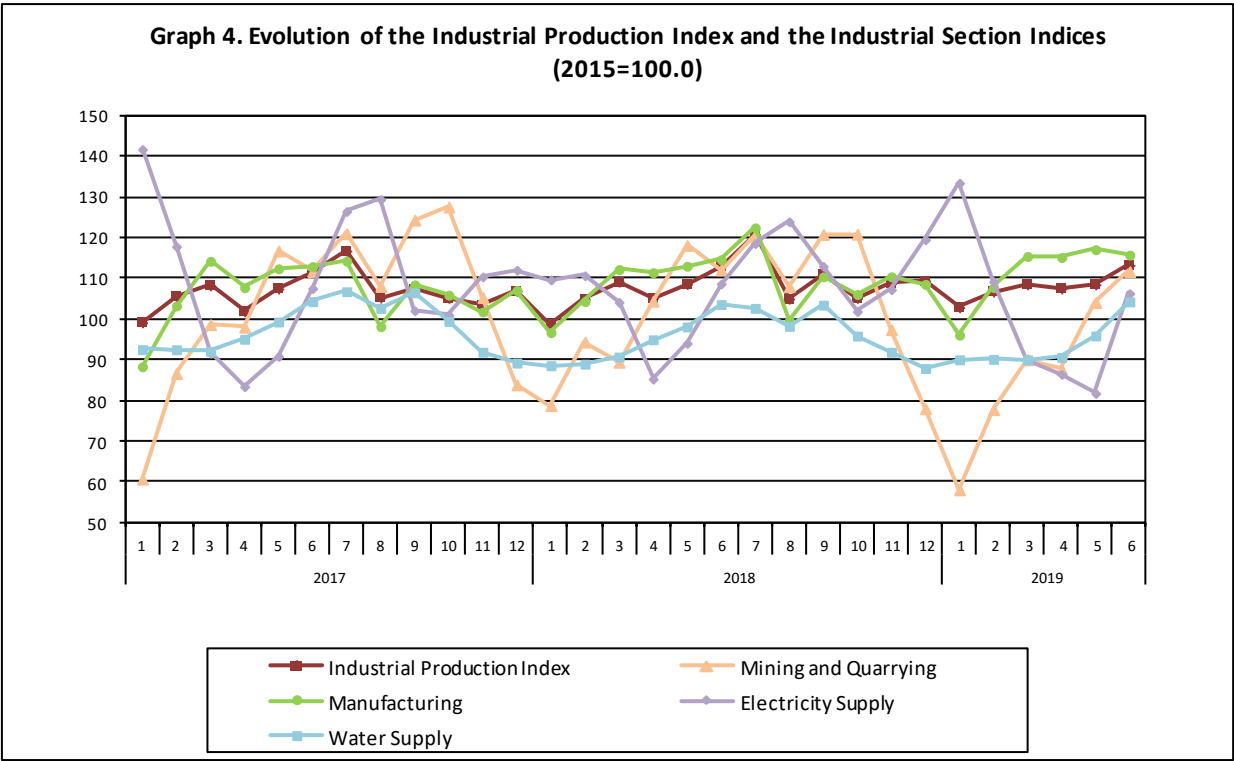


Table 1. Annual rates of change of the Industrial Production Index*(Working day adjusted data, according to the real number of working days)***Base year: 2015=100.0**

Code		Division	June			Rate of change (%)	
			2019*	2018	2017	2019/2018	2018/2017
OVERALL INDEX			113.22	112.90	111.43	0.3	1.3
B	MINING AND QUARRYING		111.65	112.11	111.72	-0.4	0.3
05-06-09	Mining of coal and lignite – Extraction of crude petroleum and natural gas – Mining support service activities		68.68	81.72	89.37	-16.0	-8.6
07	Mining of metal ores		131.52	129.97	101.54	1.2	28.0
08	Other mining and quarrying		111.13	110.42	118.52	0.6	-6.8
C	MANUFACTURING		115.75	114.63	112.92	1.0	1.5
10	Food		105.89	103.77	102.35	2.0	1.4
11	Beverages		126.96	131.26	118.86	-3.3	10.4
12	Tobacco products		139.11	99.16	108.84	40.3	-8.9
13	Textiles		111.07	115.72	118.70	-4.0	-2.5
14	Wearing apparel		78.22	86.68	89.90	-9.8	-3.6
15	Leather and related products		76.96	88.71	98.95	-13.2	-10.4
16	Wood and products of wood and cork, except furniture		122.55	120.68	114.86	1.6	5.1
17	Paper and paper products		106.73	109.27	110.94	-2.3	-1.5
18	Printing and reproduction of recorded products		102.60	102.14	103.16	0.5	-1.0
19	Coke and refined petroleum products		107.94	111.62	112.69	-3.3	-0.9
20	Chemicals and chemical products		133.92	125.35	119.74	6.8	4.7
21	Basic pharmaceutical products and pharmaceutical preparations		156.12	139.53	117.67	11.9	18.6
22	Rubber and plastic products		117.86	110.04	111.84	7.1	-1.6
23	Other non-metallic mineral products		115.47	130.56	126.03	-11.6	3.6
24	Basic metals		128.29	140.16	136.38	-8.5	2.8
25	Fabricated metal products, except machinery and equipment		135.16	133.22	131.63	1.5	1.2
26	Computers, electronic and optical products		157.77	117.00	103.63	34.8	12.9
27	Electrical equipment		111.81	109.52	117.18	2.1	-6.5
28	Machinery and equipment n. e. c.		109.04	109.32	104.70	-0.3	4.4
29	Motor vehicles, trailers and semi-trailers		81.74	81.53	124.33	0.3	-34.4
30	Other transport equipment		64.55	54.42	68.28	18.6	-20.3
31	Furniture		140.80	151.99	130.15	-7.4	16.8
32	Other manufacturing		114.46	110.24	127.10	3.8	-13.3
33	Repair and installation of machinery and equipment		87.50	94.00	107.66	-6.9	-12.7
D	ELECTRICITY SUPPLY		106.30	108.66	107.53	-2.2	1.1
35	Electricity supply		106.30	108.66	107.53	-2.2	1.1
E	WATER SUPPLY		104.25	103.59	104.31	0.6	-0.7
36	Water collection, treatment and supply		104.25	103.59	104.31	0.6	-0.7
MAIN INDUSTRIAL GROUPINGS							
1	Energy		106.54	109.01	108.77	-2.3	0.2
2	Intermediate goods		119.23	121.44	119.86	-1.8	1.3
3	Capital goods		113.46	108.75	110.35	4.3	-1.5
4	Consumer Durables		124.35	129.43	120.61	-3.9	7.3
5	Consumer Non-Durables		116.00	111.23	107.93	4.3	3.1

* Provisional data

Note: The indices are rounded up to two decimal figures when published and percentage changes up to one decimal figure when published.

Table 2. Average indices of the period January – June and rates of change (%) of the Industrial Production Index
(Working day adjusted data, according to the real number of working days)

Base year: 2015=100.0

Code		Division	Average indices of the period Jan.-June			Rate of change (%)	
			2019*	2018	2017	2019/2018	2018/2017
OVERALL INDEX			107.86	106.54	105.61	1.2	0.9
B	MINING AND QUARRYING		88.20	99.53	95.40	-11.4	4.3
05-06-09	Mining of coal and lignite – Extraction of crude petroleum and natural gas – Mining support service activities		73.04	71.74	93.58	1.8	-23.3
07	Mining of metal ores		109.96	136.73	92.55	-19.6	47.7
08	Other mining and quarrying		83.03	90.82	96.65	-8.6	-6.0
C	MANUFACTURING		111.20	108.71	106.47	2.3	2.1
10	Food		101.44	99.60	98.98	1.8	0.6
11	Beverages		99.88	101.77	93.80	-1.9	8.5
12	Tobacco products		114.30	83.27	105.53	37.3	-21.1
13	Textiles		107.64	114.55	118.65	-6.0	-3.5
14	Wearing apparel		85.40	91.88	93.45	-7.1	-1.7
15	Leather and related products		117.41	118.26	124.84	-0.7	-5.3
16	Wood and products of wood and cork, except furniture		107.14	103.53	107.41	3.5	-3.6
17	Paper and paper products		104.00	107.08	105.60	-2.9	1.4
18	Printing and reproduction of recorded products		101.93	98.69	96.62	3.3	2.1
19	Coke and refined petroleum products		106.80	114.85	114.47	-7.0	0.3
20	Chemicals and chemical products		130.12	120.76	114.31	7.7	5.6
21	Basic pharmaceutical products and pharmaceutical preparations		162.16	128.91	109.79	25.8	17.4
22	Rubber and plastic products		118.21	108.81	108.51	8.6	0.3
23	Other non-metallic mineral products		113.30	117.97	114.61	-4.0	2.9
24	Basic metals		130.64	130.15	126.31	0.4	3.0
25	Fabricated metal products, except machinery and equipment		120.37	120.72	116.94	-0.3	3.2
26	Computers, electronic and optical products		142.13	109.14	100.74	30.2	8.3
27	Electrical equipment		105.80	104.71	111.62	1.0	-6.2
28	Machinery and equipment n. e. c.		105.83	102.65	100.15	3.1	2.5
29	Motor vehicles, trailers and semi-trailers		77.77	82.55	83.09	-5.8	-0.7
30	Other transport equipment		50.62	58.80	61.29	-13.9	-4.1
31	Furniture		121.37	122.98	103.31	-1.3	19.0
32	Other manufacturing		106.74	103.65	101.81	3.0	1.8
33	Repair and installation of machinery and equipment		91.40	85.74	83.78	6.6	2.3
D	ELECTRICITY SUPPLY		101.18	102.06	105.48	-0.9	-3.2
35	Electricity supply		101.18	102.06	105.48	-0.9	-3.2
E	WATER SUPPLY		93.47	94.13	95.96	-0.7	-1.9
36	Water collection, treatment and supply		93.47	94.13	95.96	-0.7	-1.9
MAIN INDUSTRIAL GROUPINGS							
1	Energy		102.12	105.24	107.37	-3.0	-2.0
2	Intermediate goods		112.90	113.08	111.03	-0.2	1.8
3	Capital goods		107.53	102.31	96.97	5.1	5.5
4	Consumer Durables		106.52	111.63	105.58	-4.6	5.7
5	Consumer Non-Durables		111.02	103.90	101.54	6.9	2.3

* Provisional data

Note: The indices are rounded up to two decimal figures when published and percentage changes up to one decimal figure when published.

Table 3. Monthly rate of change of the Industrial Production Index*(Working day adjusted data, according to the real number of working days)***Base year: 2015=100.0**

Code	Division	June 2019*	May 2019**	Rate of change (%) June 2019 / May 2019
OVERALL INDEX		113.22	108.46	4.4
B	MINING AND QUARRYING	111.65	104.11	7.2
05-06-09	Mining of coal and lignite – Extraction of crude petroleum and natural gas – Mining support service activities	68.68	99.60	-31.0
07	Mining of metal ores	131.52	115.01	14.4
08	Other mining and quarrying	111.13	101.02	10.0
C	MANUFACTURING	115.75	117.07	-1.1
10	Food	105.89	105.22	0.6
11	Beverages	126.96	114.71	10.7
12	Tobacco products	139.11	137.78	1.0
13	Textiles	111.07	115.28	-3.6
14	Wearing apparel	78.22	84.60	-7.5
15	Leather and related products	76.96	112.42	-31.5
16	Wood and products of wood and cork, except furniture	122.55	109.30	12.1
17	Paper and paper products	106.73	106.49	0.2
18	Printing and reproduction of recorded products	102.60	111.21	-7.7
19	Coke and refined petroleum products	107.94	103.82	4.0
20	Chemicals and chemical products	133.92	139.02	-3.7
21	Basic pharmaceutical products and pharmaceutical preparations	156.12	172.78	-9.6
22	Rubber and plastic products	117.86	120.87	-2.5
23	Other non-metallic mineral products	115.47	127.84	-9.7
24	Basic metals	128.29	135.23	-5.1
25	Fabricated metal products, except machinery and equipment	135.16	129.16	4.6
26	Computers, electronic and optical products	157.77	143.74	9.8
27	Electrical equipment	111.81	115.26	-3.0
28	Machinery and equipment n. e. c.	109.04	118.68	-8.1
29	Motor vehicles, trailers and semi-trailers	81.74	89.43	-8.6
30	Other transport equipment	64.55	58.41	10.5
31	Furniture	140.80	151.37	-7.0
32	Other manufacturing	114.46	115.54	-0.9
33	Repair and installation of machinery and equipment	87.50	94.38	-7.3
D	ELECTRICITY SUPPLY	106.30	81.72	30.1
35	Electricity supply	106.30	81.72	30.1
E	WATER SUPPLY	104.25	95.87	8.7
36	Water collection, treatment and supply	104.25	95.87	8.7
MAIN INDUSTRIAL GROUPINGS				
1	Energy	106.54	90.10	18.2
2	Intermediate goods	119.23	121.75	-2.1
3	Capital goods	113.46	111.99	1.3
4	Consumer Durables	124.35	129.33	-3.9
5	Consumer Non-Durables	116.00	118.33	-2.0

* Provisional data **Revised data

Note: The indices are rounded up to two decimal figures when published and percentage changes up to one decimal figure when published.

Table 4. Monthly rate of change of the seasonally adjusted Industrial Production Index

Base year: 2015=100.0

Code	Division	June 2019	May 2019	Rate of change (%) June 2019 / May 2019
OVERALL INDEX		108.24	106.90	1.3
B	MINING AND QUARRYING	98.11	93.58	4.8
05-06-09	Mining of coal and lignite – Extraction of crude petroleum and natural gas – Mining support service activities	–	–	–
07	Mining of metal ores	125.92	108.59	16.0
08	Other mining and quarrying	94.36	87.01	8.4
C	MANUFACTURING	109.72	111.92	-2.0
10	Food	104.67	104.77	-0.1
11	Beverages	97.69	97.30	0.4
12	Tobacco products	135.37	126.07	7.4
13	Textiles	100.17	101.12	-0.9
14	Wearing apparel	85.91	87.47	-1.8
15	Leather and related products	98.23	106.75	-8.0
16	Wood and products of wood and cork, except furniture	108.50	102.21	6.2
17	Paper and paper products	105.34	98.90	6.5
18	Printing and reproduction of recorded products	97.99	103.99	-5.8
19	Coke and refined petroleum products	110.14	104.53	5.4
20	Chemicals and chemical products	122.58	125.30	-2.2
21	Basic pharmaceutical products and pharmaceutical preparations	156.65	172.08	-9.0
22	Rubber and plastic products	112.02	114.03	-1.8
23	Other non-metallic mineral products	102.87	115.89	-11.2
24	Basic metals	117.64	128.00	-8.1
25	Fabricated metal products, except machinery and equipment	116.79	115.45	1.2
26	Computers, electronic and optical products	159.20	151.48	5.1
27	Electrical equipment	101.98	102.61	-0.6
28	Machinery and equipment n. e. c.	99.44	103.62	-4.0
29	Motor vehicles, trailers and semi-trailers	72.39	88.79	-18.5
30	Other transport equipment	64.72	59.99	7.9
31	Furniture	117.25	121.01	-3.1
32	Other manufacturing	104.58	106.81	-2.1
33	Repair and installation of machinery and equipment	85.24	94.45	-9.8
D	ELECTRICITY SUPPLY	105.08	96.98	8.4
35	Electricity supply	105.08	96.98	8.4
E	WATER SUPPLY	95.39	93.87	1.6
36	Water collection, treatment and supply	95.39	93.87	1.6
MAIN INDUSTRIAL GROUPINGS				
1	Energy	105.38	98.97	6.5
2	Intermediate goods	110.07	110.49	-0.4
3	Capital goods	109.17	108.51	0.6
4	Consumer Durables	103.36	103.60	-0.2
5	Consumer Non-Durables	110.27	113.42	-2.8

Notes:

1. The indices are rounded up to two decimal figures when published and percentage changes up to one decimal figure when published.
2. The whole time-series with seasonally adjusted indices is recalculated every time a new observation is added in the time-series.
3. The composed index of divisions 05-06-09 is not seasonally adjusted, due to the fact that it is calculated from January 2015 and thus the number of observations is not adequate.

Table 5. Evolution of the Overall Industrial Production Index

(Working day adjusted data, according to the real number of working days)

Base year: 2015=100.0

Year and month	Overall Index	Monthly rate of change (%)	Annual rate of change (%)	12-month average indices (moving average)	Rate of change of the 12-month average indices (%)
2017: 1	99.14	-6.5	5.9	103.01	2.7
2	105.55	6.5	10.5	103.85	3.8
3	108.22	2.5	8.1	104.52	4.6
4	101.85	-5.9	-0.3	104.50	4.4
5	107.43	5.5	6.2	105.03	4.5
6	111.43	3.7	4.4	105.42	4.3
7	116.75	4.8	2.1	105.62	4.0
8	105.23	-9.9	5.1	106.04	4.2
9	107.39	2.1	2.2	106.24	4.4
10	105.16	-2.1	1.6	106.38	4.0
11	103.34	-1.7	1.0	106.46	3.9
12	106.90	3.5	0.8	106.53	3.9
Annual average	106.53				
2018: 1	98.71	-7.7	-0.4	106.50	3.4
2	104.86	6.2	-0.7	106.44	2.5
3	109.14	4.1	0.8	106.52	1.9
4	105.08	-3.7	3.2	106.79	2.2
5	108.56	3.3	1.0	106.88	1.8
6	112.90	4.0	1.3	107.00	1.5
7	120.86	7.0	3.5	107.34	1.6
8	104.96	-13.2	-0.3	107.32	1.2
9	110.95	5.7	3.3	107.62	1.3
10	105.16	-5.2	0.004	107.62	1.2
11	108.75	3.4	5.2	108.07	1.5
12	109.38	0.6	2.3	108.28	1.6
Annual average	108.28				
2019**: 1	102.85	-6.0	4.2	108.62	2.0
2	106.69	3.7	1.7	108.77	2.2
3	108.47	1.7	-0.6	108.72	2.1
4	107.46	-0.9	2.3	108.91	2.0
5	108.46	0.9	-0.1	108.91	1.9
6*	113.22	4.4	0.3	108.93	1.8

* Provisional data

** Revised data

Note: The indices are rounded up to two decimal figures when published and percentage changes up to one decimal figure when published.

Table 6. Monthly evolution of the seasonally adjusted Overall Industrial Production Index and Main Industrial Groupings

Base year: 2015=100.0

Year and month		Overall Index		Energy		Intermediate goods		Capital goods		Consumer durables		Consumer non-durables	
		Index	Monthly rate of change (%)	Index	Monthly rate of change (%)	Index	Monthly rate of change (%)	Index	Monthly rate of change (%)	Index	Monthly rate of change (%)	Index	Monthly rate of change (%)
2017:	1	107.19	0.6	119.97	4.4	104.56	2.5	93.16	-5.0	91.05	2.5	98.29	-4.6
	2	108.49	1.2	113.19	-5.7	109.56	4.8	106.55	14.4	101.06	11.0	102.89	4.7
	3	107.16	-1.2	106.82	-5.6	110.88	1.2	103.24	-3.1	110.48	9.3	105.56	2.6
	4	103.87	-3.1	107.13	0.3	107.30	-3.2	93.66	-9.3	99.25	-10.2	100.18	-5.1
	5	106.34	2.4	108.79	1.6	109.36	1.9	102.72	9.7	104.19	5.0	102.10	1.9
	6	105.68	-0.6	107.60	-1.1	108.07	-1.2	103.89	1.1	103.51	-0.7	102.09	-0.01
	7	105.86	0.2	106.97	-0.6	109.78	1.6	105.43	1.5	101.17	-2.3	101.85	-0.2
	8	108.20	2.2	108.82	1.7	114.16	4.0	98.04	-7.0	99.37	-1.8	105.93	4.0
	9	104.97	-3.0	103.78	-4.6	108.96	-4.6	101.54	3.6	102.54	3.2	104.33	-1.5
	10	107.27	2.2	107.55	3.6	111.50	2.3	101.00	-0.5	104.06	1.5	105.46	1.1
	11	105.83	-1.3	111.16	3.4	107.45	-3.6	94.90	-6.0	101.36	-2.6	101.22	-4.0
	12	108.06	2.1	106.99	-3.8	111.99	4.2	100.56	6.0	111.77	10.3	108.07	6.8
Annual average		106.58		109.06		109.46		100.39		102.48		103.16	
2018:	1	107.72	-0.3	104.16	-2.6	113.48	1.3	111.75	11.1	111.93	0.1	106.29	-1.6
	2	107.61	-0.1	109.09	4.7	110.73	-2.4	100.19	-10.3	107.78	-3.7	105.34	-0.9
	3	108.43	0.8	113.85	4.4	108.28	-2.2	102.29	2.1	105.28	-2.3	103.76	-1.5
	4	106.81	-1.5	107.75	-5.4	111.40	2.9	110.23	7.8	106.58	1.2	101.21	-2.5
	5	107.74	0.9	109.64	1.8	109.81	-1.4	106.07	-3.8	106.07	-0.5	104.38	3.1
	6	107.28	-0.4	107.84	-1.6	109.76	-0.04	103.76	-2.2	108.59	2.4	105.53	1.1
	7	109.19	1.8	106.63	-1.1	113.68	3.6	106.40	2.5	103.77	-4.4	109.78	4.0
	8	108.15	-0.9	111.08	4.2	113.24	-0.4	105.01	-1.3	101.16	-2.5	101.86	-7.2
	9	108.80	0.6	112.54	1.3	110.36	-2.5	109.21	4.0	100.09	-1.1	103.40	1.5
	10	107.35	-1.3	107.79	-4.2	108.70	-1.5	104.69	-4.1	101.15	1.1	106.78	3.3
	11	111.38	3.8	110.21	2.3	110.88	2.0	108.20	3.4	100.97	-0.2	114.53	7.3
	12	110.22	-1.0	110.72	0.5	108.48	-2.2	107.33	-0.8	103.59	2.6	112.06	-2.2
Annual average		108.39		109.28		110.73		106.26		104.75		106.24	
2019:	1	111.33	1.0	114.62	3.5	109.09	0.6	109.51	2.0	100.51	-3.0	110.12	-1.7
	2	109.29	-1.8	107.29	-6.4	109.74	0.6	113.73	3.9	101.38	0.9	110.60	0.4
	3	107.77	-1.4	100.87	-6.0	112.34	2.4	112.42	-1.2	98.54	-2.8	111.80	1.1
	4	108.66	0.8	103.83	2.9	111.34	-0.9	109.36	-2.7	104.45	6.0	112.44	0.6
	5	106.90	-1.6	98.97	-4.7	110.49	-0.8	108.51	-0.8	103.60	-0.8	113.42	0.9
	6	108.24	1.3	105.38	6.5	110.07	-0.4	109.17	0.6	103.36	-0.2	110.27	-2.8

Notes:

1. The indices are rounded up to two decimal figures when published and percentage changes up to one decimal figure when published.
2. The whole time-series with seasonally adjusted indices is recalculated every time a new observation is added in the time-series.

METHODOLOGICAL NOTES

Generally	The Industrial Production Index (IPI) is compiled since 1959.
Purpose of the index	The IPI is an important business cycle indicator, which shows the monthly activity in the Mining and Quarrying, Manufacturing, Electricity and Water Supply divisions. More specifically, the objective of the Industrial Production Index is to compare the magnitude (volume) of the output in the current month with the corresponding output in any given period which is considered as base period. The IPI shows the evolution of the value added of the production factors cost, at constant prices.
Legal basis	The compilation of the IPI is governed by Council Regulation (EC) No 1165/98 concerning short-term statistics. Furthermore, the IPI is governed by Regulation (EC) No 1893/2006 of the European Parliament and of the Council, by Commission Regulation (EC) No 656/2007 and by Council Regulation (EC) No 451/2008.
Reference period	Month.
Base year	2015=100.0.
Revision	The IPI is a fixed base index. The Industrial Production Index was currently revised with new base year 2015 (2015=100.0) according to the provisions of Council Regulation No 1165/98 concerning short-term statistics. Short-term indices are revised every five (5) years, particularly in calendar years ending in 0 or 5.
Statistical classifications	At the level of branches of economic activities, the classification NACE Rev.2 of Eurostat was used (Regulation No 1893/2006), while at the level of main industrial groups, the allocation of two-digit and three-digit NACE Rev. 2 headings to categories of aggregate classification was used, in accordance with Council Regulation No 656/2007. At product level, the classification CPA 2008 of Eurostat was used, according to Council Regulation No 451/2008.
Geographical coverage	The Index covers the whole Country.
Coverage of economic activities	The index covers all the sections of industry, the main industrial groups, all levels of economic activities (divisions, groups and classes) and the level of products.
Statistical survey	The data are collected from a sample of 1,263 enterprises. The survey covers 325 products and the measurement of the surveyed products is made in terms of output quantities or in terms of production value or turnover, according to the specific situation in each branch of economic activity.
Seasonal adjustment	Seasonal adjustment is the procedure followed to remove the impact of seasonality on the time-series (i.e. the impact of monthly effects, e.g. holidays, tourist period etc), in order to improve comparability over time. The method used is the TRAMO-SEATS method with the use of JDemetra+ 2.0.0. For the seasonal adjustment of the Industrial Production Index at 2-digit level of NACE Rev.2, at section level (B – Mining and Quarrying, C – Manufacturing, D – Electricity and E – Water Supply) and for the Main Industrial Groupings (MIGs), the direct approach is applied, namely each time-series is seasonally adjusted independently. For the overall Industrial Production Index, the indirect approach is applied, with the seasonally adjusted IPI being computed by aggregating the seasonally adjusted MIGs using appropriate weights.
Publication of data	The revised IPI with the new base year 2015 (2015=100.0) is released since July 2019, with May 2019 as the first reference month. Data with base year 2015=100.0 are available from January 2000 onwards.
References	More information about the methodology concerning the compilation and calculation of the index and for the time series is available on the website of the Hellenic Statistical Authority (ELSTAT) (http://www.statistics.gr/en/statistics/-/publication/DKT21/).