



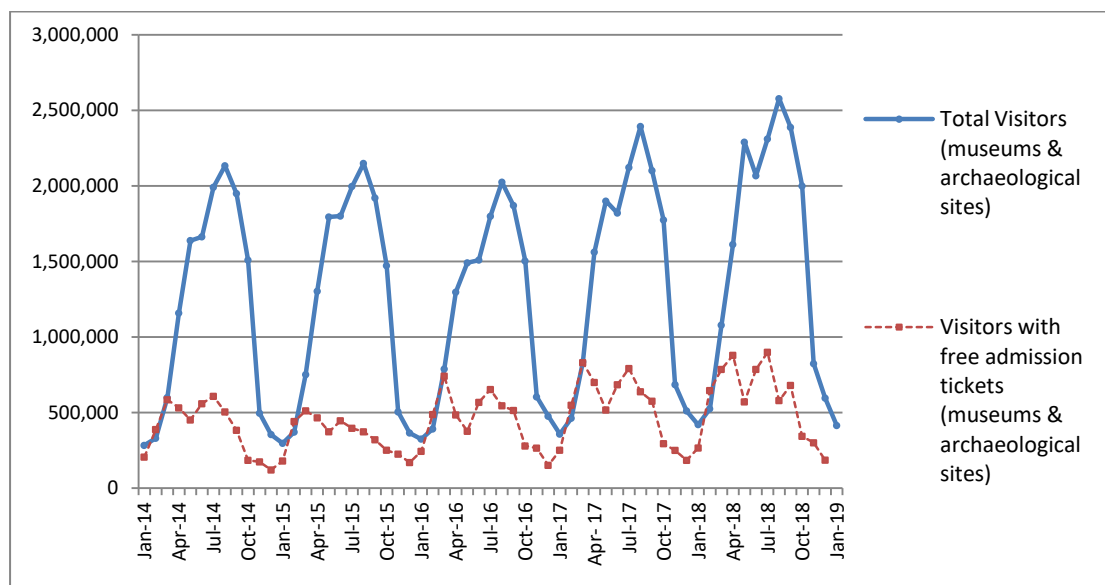
PRESS RELEASE

SURVEY ON MUSEUMS AND ARCHAEOLOGICAL SITES ATTENDANCE JANUARY 2019

The Hellenic Statistical Authority (ELSTAT) announces the results of the *Survey on Museums and Archaeological Sites Attendance* for January 2019, More specifically:

- In January 2019 compared with the corresponding month of 2018, Museums experienced an 1.8% increase in the number of visitors and a 2.9% increase in the number of free admission visitors as well as a 13,8% increase in their receipts (Table 1),
- In January 2019 compared with the corresponding month of 2018, the number of visitors at Archaeological sites recorded a decrease of 3.7%, while a decrease of 1.2% was observed in the number of free admission visitors and a 0.1% decrease in the corresponding receipts (Table 1),

Graph 1: Visitors of Museums and Archaeological sites (Jan 2014 – Jan 2019)



Information:

Social Statistics Division

Section of Culture and Sports statistics,

Argyri Pateraki (Tel: +30 213 1352129, e-mail: ar.pateraki@statistics.gr)

**TABLE 1: VISITORS OF MUSEUMS AND ARCHAEOLOGICAL SITES - TOTAL RECEIPTS
(JANUARY 2018 & JANUARY 2019)**

I. VISITORS			
Museums and Archaeological sites	2018	2019	Change 2019/2018
Total number of visitors (A+B)	421,023	415,025	-1.4%
A. Museums (C+E)	175,507	178,687	1.8%
Acropolis Museum	61,497	69,619	13.2%
National Archaeological	24,846	29,550	18.9%
Ancient Olympia	1,972	1,938	-1.7%
Palace of the Grand Master (Rhodes)	1,193	993	-16.8%
Herakleion Archaeological (Crete)	5,233	3,414	-34.8%
White Tower	11,205	7,565	-32.5%
Delphi	6,505	6,911	6.2%
Other museums	63,056	58,697	-6.9%
B. Archaeological Sites (D+F)	245,516	236,338	-3.7%
Epidavros ⁽¹⁾	7,602	7,370	-3.1%
The Acropolis of Mycenae & Atreus' Treasure	8,352	8,070	-3.4%
The Acropolis of Athens ⁽²⁾	92,512	92,937	0.5%
Sounio	10,429	10,434	0.0%
The Acropolis of Lindos	379	315	-16.9%
Royal Tombs of Vergina	5,363	3,607	-32.7%
Ancient Olympia	5,541	4,499	-18.8%
Knossos (Crete)	5,028	3,166	-37.0%
Phaistos (Crete)	4,114	1,473	-64.2%
Ancient Korinthos ⁽¹⁾	4,680	4,881	4.3%
Mystras ⁽¹⁾	1,794	1,654	-7.8%
Delphi	10,617	7,895	-25.6%
Other archaeological sites	89,105	90,037	1.0%
II. VISITORS WHO PAID TICKET			
	2018	2019	Change 2019/2018
Total number of visitors who paid ticket (C+D)	236,317	228,987	-3.1%
C. Museums	89,056	89,747	0.8%
D. Archaeological sites	147,261	139,240	-5.4%
III. VISITORS WITH FREE ADMISSION TICKETS			
	2018	2019	Change 2019/2018
Total number of visitors with free admission ticket (E+F)	184,706	186,038	0.7%
E. Museums	86,451	88,940	2.9%
F. Archaeological sites	98,255	97,098	-1.2%
IV. RECEIPTS (euros)			
	2018	2019	Change 2019/2018
Total Receipts (G+H)	1,498,732.00	1,549,091.00	3.4%
G. Museums	376,404.00	428,249.00	13.8%
H. Archaeological sites	1,122,328.00	1,120,842.00	-0.1%

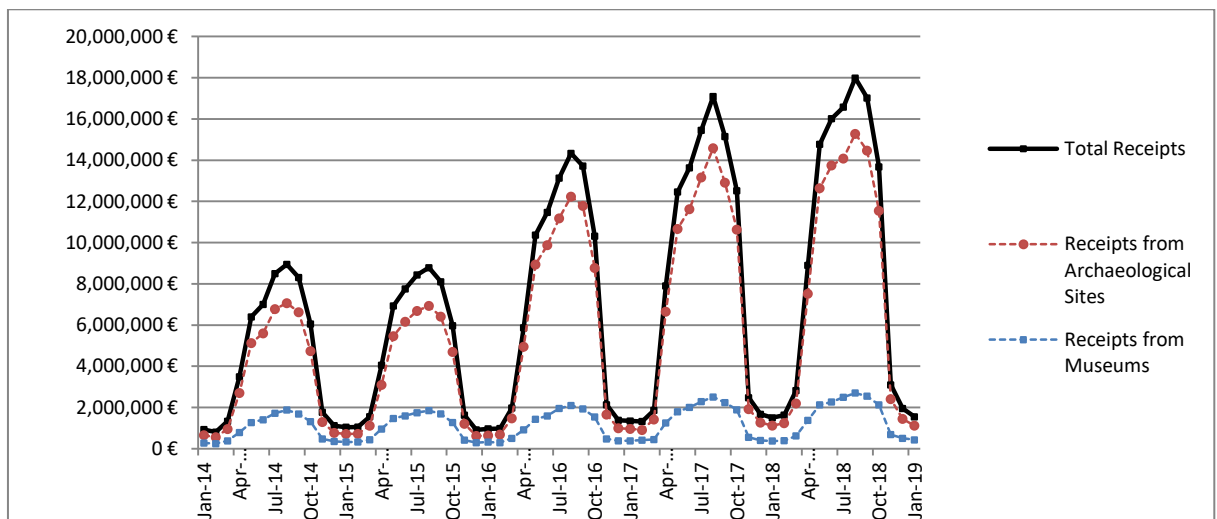
⁽¹⁾ Flat rate ticket, valid both for the museum and the archaeological site.

⁽²⁾ From May 2017 onwards, the data for the number of tickets in the archaeological site of the Acropolis of Athens include the tickets of the Ancient Theatre of Dionysos.

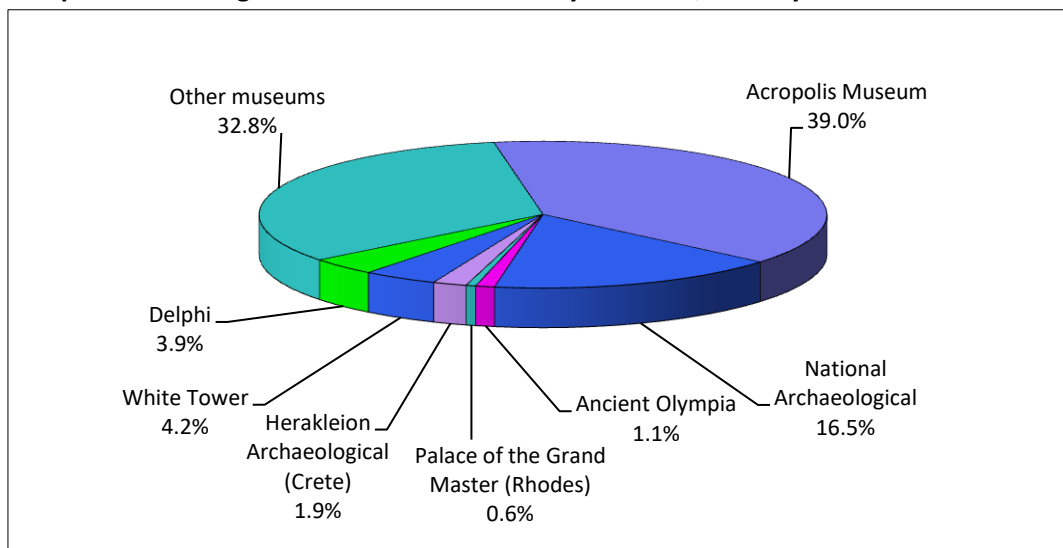
⁽³⁾ The data referring to the number of tickets for the archaeological sites of the Acropolis of Lindos for January 2019 are provisional and are based on estimation.

The following graphs depict the evolution of the receipts (Graph 2), as well as the number of visitors by Museum and Archaeological Site (Graphs 3 and 4, respectively),

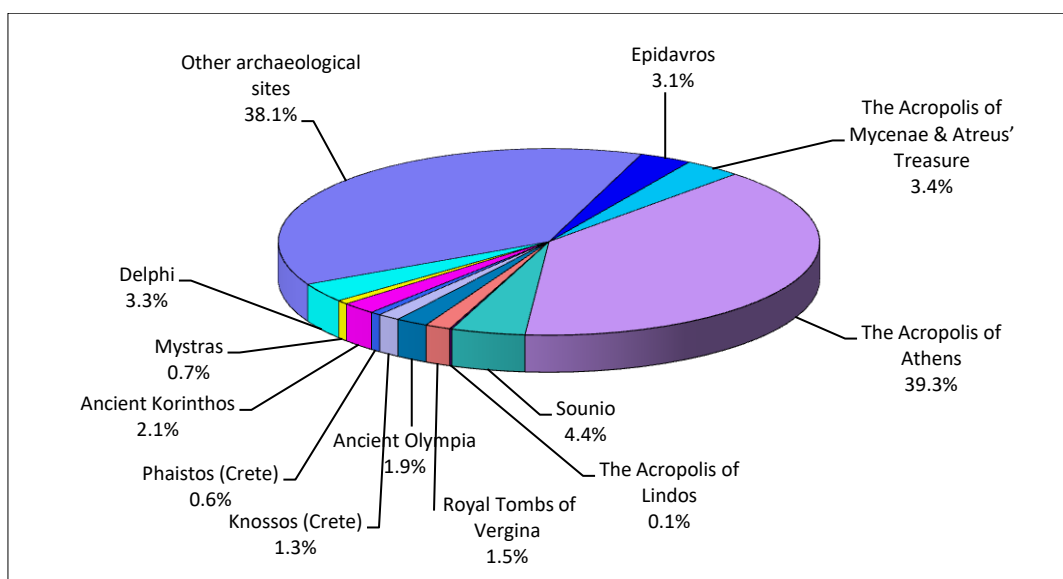
Graph 2: Receipts from Museums and Archaeological Sites (Jan 2014- Jan 2019)



Graph 3: Percentage distribution of Visitors by Museum, January 2019



Graph 4: Percentage distribution of Visitors by Archaeological site, January 2019



**TABLE 2: VISITORS OF MUSEUMS AND ARCHAEOLOGICAL SITES - TOTAL RECEIPTS
(2017, 2018 AND JANUARY 2018 & 2019)**

I. VISITORS					
Museums and Archaeological sites	2017	2018	JANUARY		change
			2018	2019	2019/2018
Total number of visitors (A+B)	16,524,557	18,603,282	421,023	415,025	-1.4%
A. Museums (C+E)	5,191,781	5,702,211	175,507	178,687	1.8%
Acropolis Museum	1,593,362	1,774,304	61,497	69,619	13.2%
National Archaeological	545,555	594,219	24,846	29,550	18.9%
Ancient Olympia	145,118	156,658	1,972	1,938	-1.7%
Palace of the Grand Master (Rhodes)	235,413	242,759	1,193	993	-16.8%
Herakleion Archaeological (Crete)	426,191	555,031	5,233	3,414	-34.8%
White Tower	268,149	225,944	11,205	7,565	-32.5%
Delphi	211,827	249,754	6,505	6,911	6.2%
Other museums	1,766,166	1,903,542	63,056	58,697	-6.9%
B. Archaeological Sites (D+F)	11,332,776	12,901,071	245,516	236,338	-3.7%
Epidavros ⁽¹⁾	469,060	548,900	7,602	7,370	-3.1%
The Acropolis of Mycenae & Atreus' Treasure	412,397	495,993	8,352	8,070	-3.4%
The Acropolis of Athens ⁽²⁾	2,766,218	3,150,604	92,512	92,937	0.5%
Sounio	259,709	306,665	10,429	10,434	0.0%
The Acropolis of Lindos	441,012	489,137	379	315	-16.9%
Royal Tombs of Vergina	203,632	222,503	5,363	3,607	-32.7%
Ancient Olympia	481,252	484,238	5,541	4,499	-18.8%
Knossos (Crete)	634,710	855,663	5,028	3,166	-37.0%
Phaistos (Crete)	95,182	134,538	4,114	1,473	-64.2%
Ancient Korinthos ⁽¹⁾	191,836	196,944	4,680	4,881	4.3%
Mystras ⁽¹⁾	125,549	145,939	1,794	1,654	-7.8%
Delphi	345,804	405,947	10,617	7,895	-25.6%
Other archaeological sites	4,906,415	5,464,000	89,105	90,037	1.0%
II. VISITORS WHO PAID TICKET					
	2017	2018	JANUARY		change
			2018	2019	2019/2018
Total number of visitors who paid ticket (C+D)	10,288,448	11,576,110	236,227	228,987	-3.1%
C. Museums	2,831,466	3,155,269	88,966	89,747	0.9%
D. Archaeological sites	7,456,982	8,420,841	147,261	139,240	-5.4%
III. VISITORS WITH FREE ADMISSION TICKETS					
	2017	2018	JANUARY		change
			2018	2019	2019/2018
Total number of visitors with free admission ticket (E+F)	6,236,109	7,027,172	184,796	186,038	0.7%
E. Museums	2,360,315	2,546,942	86,541	88,940	2.8%
F. Archaeological sites	3,875,794	4,480,230	98,255	97,098	-1.2%
IV. RECEIPTS (euros)					
	2017	2018	JANUARY		change
			2018	2019	2019/2018
Total Receipts (G+H)	102,887,879.00	115,772,341.00	1,498,732.00	1,549,091.00	3.4%
G. Museums	16,175,121.00	18,251,493.00	376,404.00	428,249.00	13.8%
H. Archaeological sites	86,712,758.00	97,520,848.00	1,122,328.00	1,120,842.00	-0.1%

⁽¹⁾ Flat rate ticket, valid both for the museum and the archaeological site.

⁽²⁾ From May 2017 onwards, the data for the number of tickets in the archaeological site of the Acropolis of Athens include the tickets of the Ancient Theatre of Dionysos.

EXPLANATORY NOTES

Survey on Museums and Archaeological Sites Attendance	The Survey on Museums and Archaeological Sites Attendance has been producing results since 1970, The survey collects data from the Archaeological Receipts Fund (ARF) of the Ministry of Culture and Sports concerning the number of visitors and the receipts from the tickets sold in the Museums and Archaeological sites of the country, The corresponding data for the Acropolis Museum are available from December 2009 onwards,
Legal Framework	The survey is conducted since 1970 on a regular basis and it produces results on a monthly and yearly basis, in compliance with the Joint Ministerial Decision 15189/B379/73,
Reference Period	01/01/2019 to 31/01/2019,
Methodology and Definitions	The Survey is conducted on a monthly basis from data collected from the Archaeological Receipts Fund (ARF) of the Ministry of Culture and Sports concerning on the number of visitors and the receipts from the tickets sold in the Museums and Archaeological sites of the country, ELSTAT tabulates the data on Museums and the Archaeological sites for the whole of the Country, by month and by year,

Information on ticket payment

- From January 2002 onwards, the number of Museums' visitors includes both the visitors who have bought a ticket and the visitors with free admission ticket, From 16-06-1996 onwards, the Museums and the Archaeological sites all over Greece have a paid admission for all the visitors, Greeks and foreigners, all over the year, except in the following days, which are free admission days:
- National Holidays (25th of March and 28th of October)
- The first Sunday every month during the five month period from 1 November to 31 March
- The 6th of March (in memory of Melina Merkouri)
- The 18th of April (International Monuments Day)
- The 18th of May (International Museums Day)
- The 5th of June (International Environment Day)
- The last weekend of September, annually (European Heritage Days)

Free admission tickets

The admission to Museums and Archaeological site is free for:

- Young people from EU-countries aged under 18 years, with current identification card to confirm their age,
- Students of Universities and of Higher and Technical Education Institutions or equivalent institutions of EU-countries, as well as of Tour Guide Training Institutes, with valid student identification card or International Student Identity Card (ISIC)
- Employees of the Hellenic Ministry of Culture, with valid professional identity card
- ICOM and ICOMOS cardholders
- Tour Guides with their current working identification card from the Ministry of Development
- Teachers accompanying pupils and students on primary, secondary and tertiary education institution tours
- Journalists with valid journalists' identification card
- Members of Associations and Societies of Friends of Museums and Archaeological Sites
- Official guests of the Greek Government, after relevant approval
- Escorts of blind persons and persons with disabilities
- Free admission cardholders
- Holders of the Culture Card

Number of flat rate tickets

From April 1999 onwards, in some museums and the nearby archaeological sites, in addition to the ordinary ticket, a new "flat rate ticket" was established, which is valid for both the museum and the nearby archaeological site, The total number of these flat rate tickets for **January 2019** was **9,484**,

More information on the Survey on Museums and Archaeological Sites Attendance and detailed time series are available on: <http://www.statistics.gr/en/statistics/-/publication/SCI21/->

