



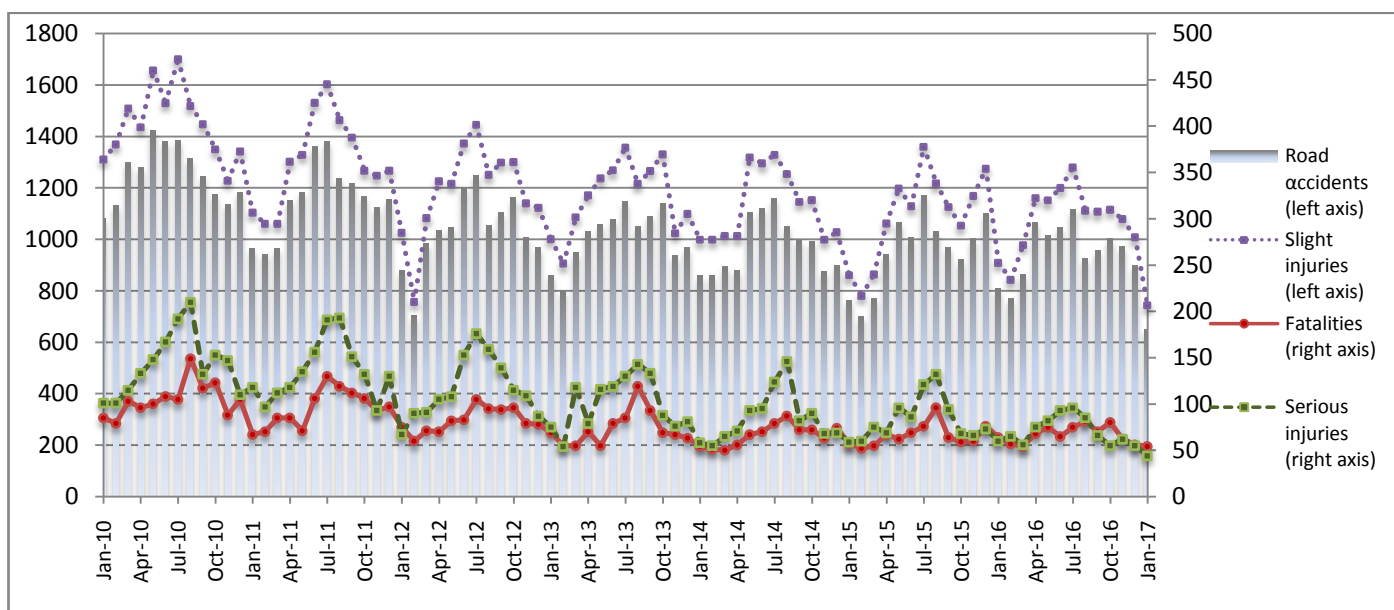
PRESS RELEASE

ROAD ACCIDENTS: January 2017

The Hellenic Statistical Authority (ELSTAT) announces data on Road Accidents for January 2017. In particular, the road traffic accidents which occurred in Greece, resulting in death or injury, decreased by 20.0% in comparison with the corresponding month of 2016 (648 road accidents in January 2017, against 810 road accidents in January 2016).

The casualties of the injury-causing accidents that occurred in January 2017 were as follows: 54 deaths, 44 serious injuries and 744 slight injuries. In contrast, in January 2016 the corresponding figures were: 64 deaths, 60 serious injuries and 909 slight injuries. Therefore, road accident casualties in January 2017 decreased by 15.6% for deaths, by 26.7% for serious injuries and by 18.2% for slight injuries.

**Graph 1: Road traffic accidents and casualties,
January 2010-January 2017**



Provisional data: Apr 16 – Jan 17

Data for the reference year are provisional until the finalisation of the annual data, which became final 10 months after the end of the reference year. During these 10 months the provisional data are updated on the basis of the data of the Road Accident Forms which are transmitted to ELSTAT by Police Authorities.

Information:

Social Statistics Division

Justice and Public Order Statistics Section

D. Athanasopoulou

Tel: +30 213 1352767

Fax : +30 213 1352764

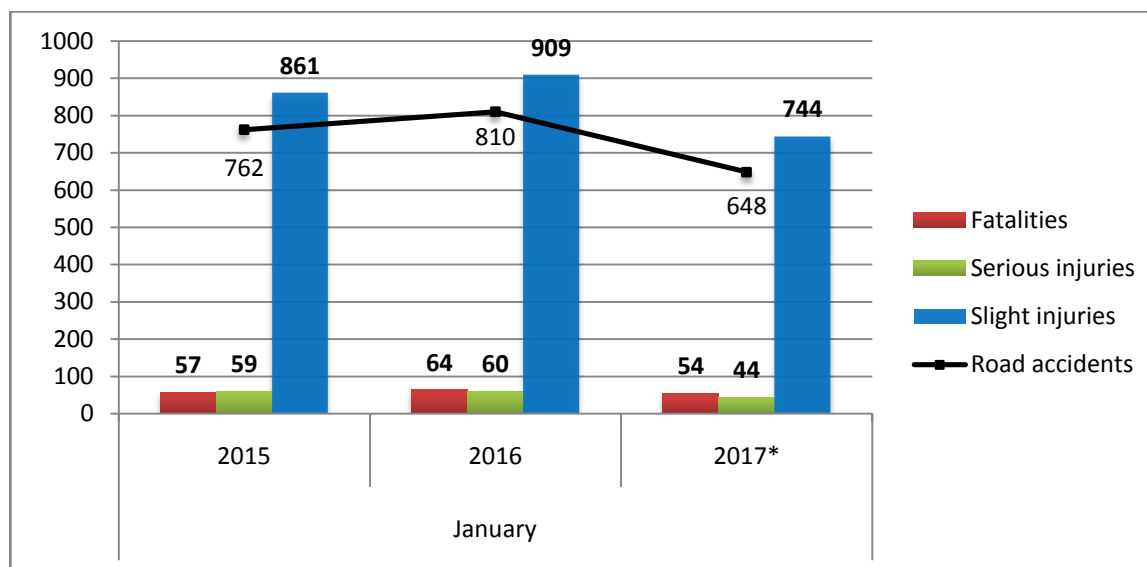
e-mail: d.athanasopoulou@statistics.gr

Table 1: Road traffic accidents and casualties, 2015-2017*

	January				
	2015	2016	2016/2015 (%)	2017*	2017*/2016 (%)
Road accidents	762	810	6,3%	648	-20,0%
Fatalities	57	64	12,3%	54	-15,6%
Total injuries	920	969	5,3%	788	-18,7%
Serious injuries	59	60	1,7%	44	-26,7%
Slight injuries	861	909	5,6%	744	-18,2%

* Provisional data

Graph 2: Road traffic accidents and casualties, 2015-2017*



* Provisional data

Table 2:
Road traffic accidents and casualties, by region and department,
January 2016 - 2017

Region and Department	Road accidents			Fatalities			Serious injuries			Slight injuries		
	2016	2017*	%	2016	2017*	%	2016	2017*	%	2016	2017*	%
Greece Total	810	648	-20.0%	64	54	-15.6%	60	44	-26.7%	909	744	-18.2%
Anatoliki Macedonia, Thraki (East Macedonia and Thrace)	39	12	-69.2%	7	3	-57.1%	6	0	-100.0%	46	15	-67.4%
Drama	7	2	-71.4%	0	0		1	0		11	2	
Evros	5	3	-40.0%	2	2		0	0		5	4	
Kavala	10	1	-90.0%	0	1		3	0		14	0	
Xanthi	8	1	-87.5%	2	0		2	0		7	4	
Rodopi	9	5	-44.4%	3	0		0	0		9	5	
Kentriki Macedonia (Central Macedonia)	148	136	-8.1%	9	6	-33.3%	7	11	57.1%	174	162	-6.9%
Imathia	3	5	66.7%	2	0		0	0		1	8	
Thessaloniki	122	116	-4.9%	3	6		2	9		150	133	
Kilkis	6	5	-16.7%	0	0		0	1		9	4	
Pella	5	5	0.0%	2	0		0	1		4	8	
Pierria	2	1	-50.0%	1	0		1	0		0	1	
Serres	6	3	-50.0%	1	0		0	0		6	7	
Chalkidiki	4	1	-75.0%	0	0		4	0		4	1	
Dytiki Macedonia (West Macedonia)	7	2	-71.4%	1	1	0.0%	1	0	-100.0%	8	2	-75.0%
Grevena	0	1	-	0	0		0	0		0	2	
Kastoria	1	0	-100.0%	0	0		0	0		1	0	
Kozani	4	1	-75.0%	0	1		1	0		5	0	
Florina	2	0	-100.0%	1	0		0	0		2	0	
Ipeiros (Epirus)	11	6	-45.5%	3	0	-100.0%	1	1	0.0%	18	9	-50.0%
Arta	2	0	-100.0%	1	0		0	0		7	0	
Thesprotia	1	0	-100.0%	0	0		0	0		1	0	
Ioannina	6	3	-50.0%	1	0		1	1		5	4	
Preveza	2	3	50.0%	1	0		0	0		5	5	
Thessalia (Thessaly)	11	7	-36.4%	2	2	0.0%	1	2	100.0%	12	4	-66.7%
Karditsa	2	1	-50.0%	0	1		1	0		2	0	
Larisa	4	5	25.0%	1	1		0	2		4	3	
Magnisia	4	1	-75.0%	1	0		0	0		4	1	
Trikala	1	0	-100.0%	0	0		0	0		2	0	
Ionioi Nisoi (Ionian Islands)	6	3	-50.0%	0	1	-	1	0	-100.0%	7	4	-42.9%
Zakynthos	0	1	-	0	1		0	0		0	1	
Kerkyra	2	1	-50.0%	0	0		0	0		3	2	
Kefallinia	2	1	-50.0%	0	0		1	0		1	1	
Lefkada	2	0	-100.0%	0	0		0	0		3	0	

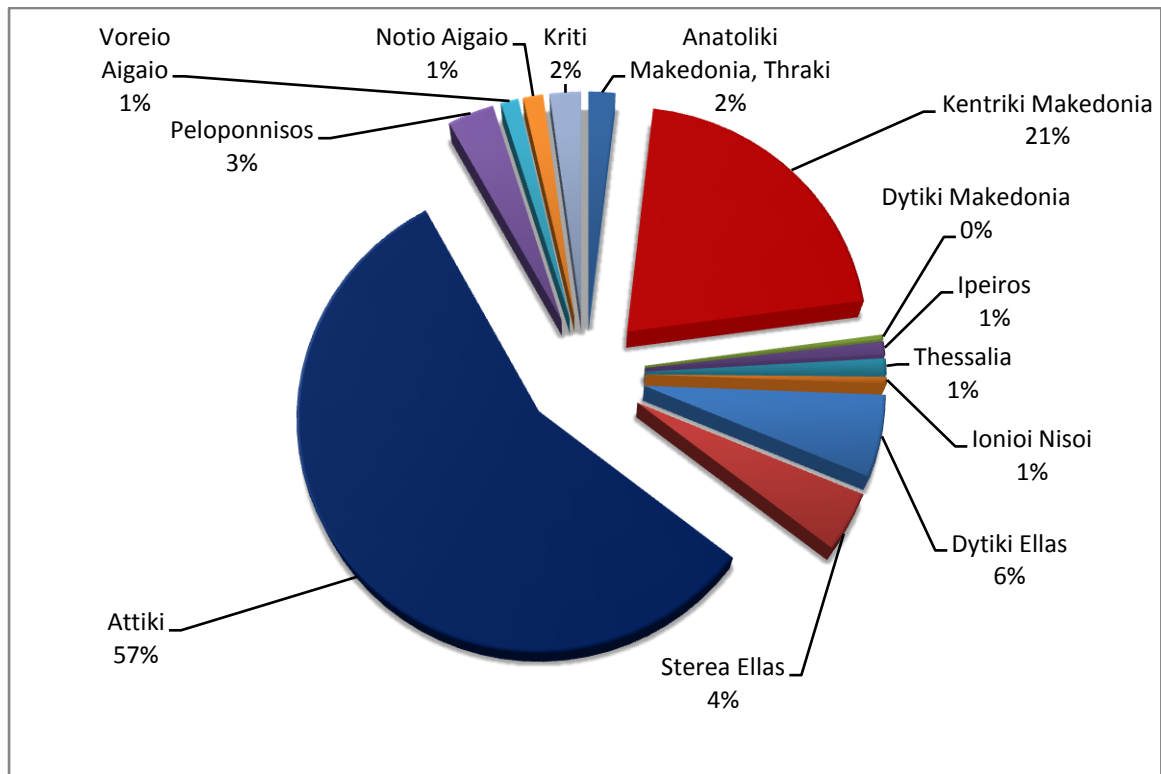
* Provisional data

Table 2 (Continued):
Road traffic accidents and casualties, by region and department,
January 2016 - 2017

Region and Department	Road accidents			Fatalities			Serious injuries			Slight injuries		
	2016	2017*	%	2016	2017*	%	2016	2017*	%	2016	2017*	%
Dytiki Ellas (West Greece)	40	37	-7.5%	4	7	75.0%	8	6	-25.0%	55	45	-18.2%
Aitolia. Akarnania	11	13	18.2%	3	0		2	3		10	12	
Achaia	21	18	-14.3%	1	3		3	2		37	22	
Ileia	8	6	-25.0%	0	4		3	1		8	11	
Stereia Ellas	26	27	3.8%	2	7	250.0%	3	4	33.3%	32	29	-9.4%
Voiotia	4	7	75.0%	0	1		0	3		5	8	
Evvoia	11	12	9.1%	1	4		3	1		8	11	
Evrytania	1	0	-100.0%	0	0		0	0		1	0	
Fthiotida	6	4	-33.3%	1	1		0	0		7	3	
Fokida	4	4	0.0%	0	1		0	0		11	7	
Attiki (Attica)	460	366	-20.4%	22	17	-22.7%	18	14	-22.2%	507	419	-17.4%
Peloponnisos (Peloponnese)	30	21	-30.0%	5	2	-60.0%	5	0	-100.0%	30	23	-23.3%
Argolida	5	7	40.0%	1	0		2	0		6	9	
Arkadia	5	3	-40.0%	0	0		0	0		6	3	
Korinthia	11	6	-45.5%	1	0		2	0		8	7	
Lakonia	3	2	-33.3%	0	0		0	0		5	2	
Messinia	6	3	-50.0%	3	2		1	0		5	2	
Voreio Aigaio (North Aegean)	8	8	0.0%	0	2	-	3	1	-66.7%	5	6	20.0%
Lesvos	2	3	50.0%	0	1		1	0		1	3	
Samos	1	1	0.0%	0	0		1	0		0	1	
Chios	5	4	-20.0%	0	1		1	1		4	2	
Notio Aigaio (South Aegean)	8	9	12.5%	2	2	0.0%	2	1	-50.0%	5	9	80.0%
Dodekanisos	6	6	0.0%	2	1		2	1		3	7	
Kyklades	2	3	50.0%	0	1		0	0		2	2	
Kriti (Crete)	16	14	-12.5%	7	4	-42.9%	4	4	0.0%	10	17	70.0%
Irakleio	8	7	-12.5%	4	2		2	3		4	9	
Lasithi	0	4	-	0	0		0	1		0	6	
Rethymno	3	2	-33.3%	1	2		0	0		2	1	
Chania	5	1	-80.0%	2	0		2	0		4	1	

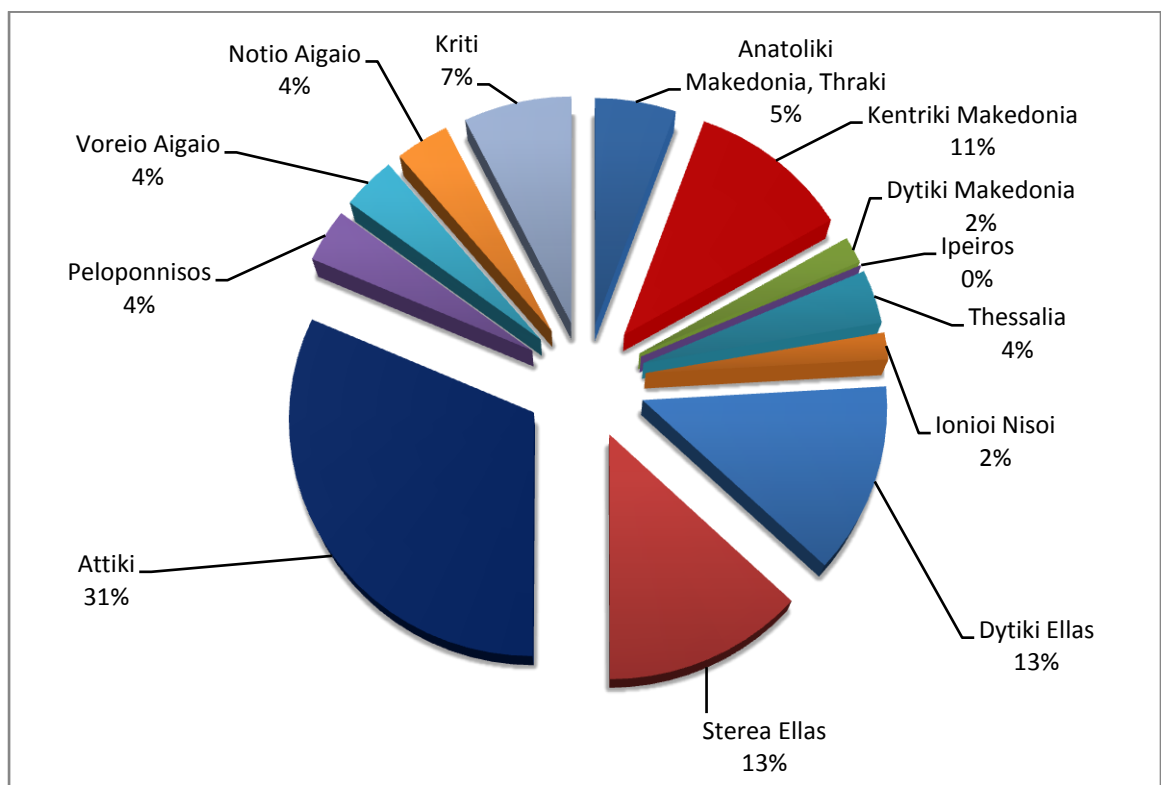
* Provisional data

**Graph 3: Road traffic accidents by region,
January 2017 ***



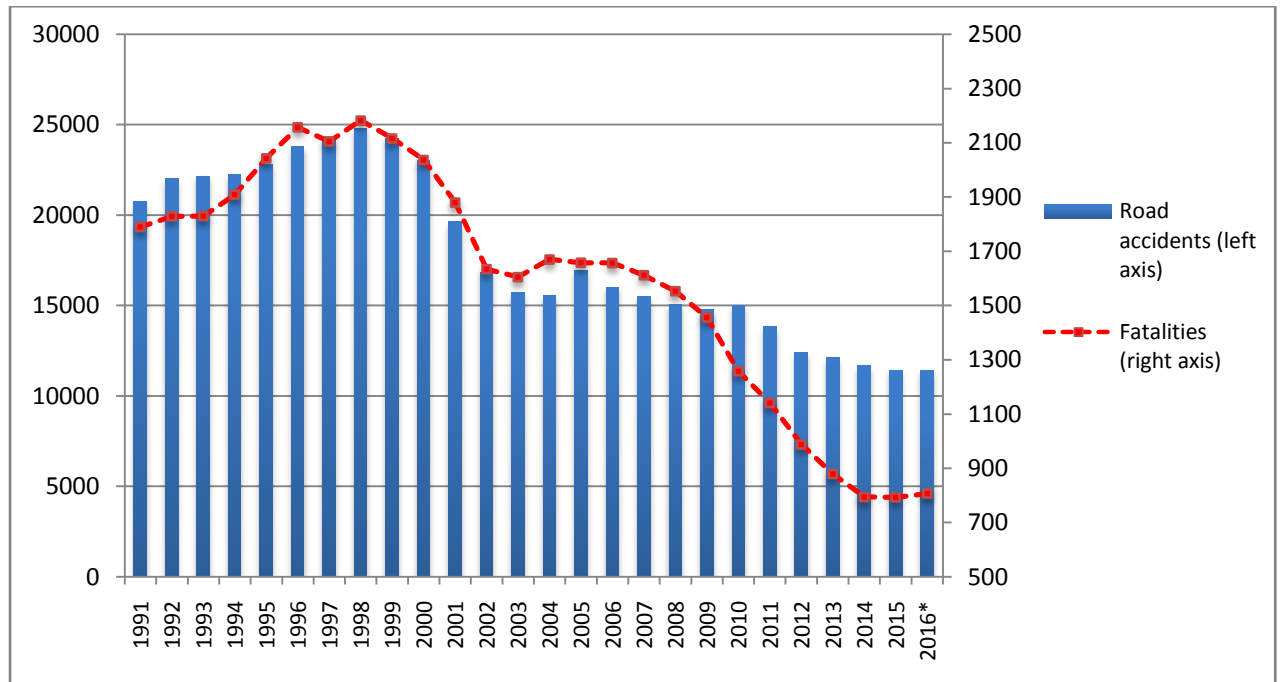
* Provisional data

**Graph 4: Fatalities by region,
January 2017 ***



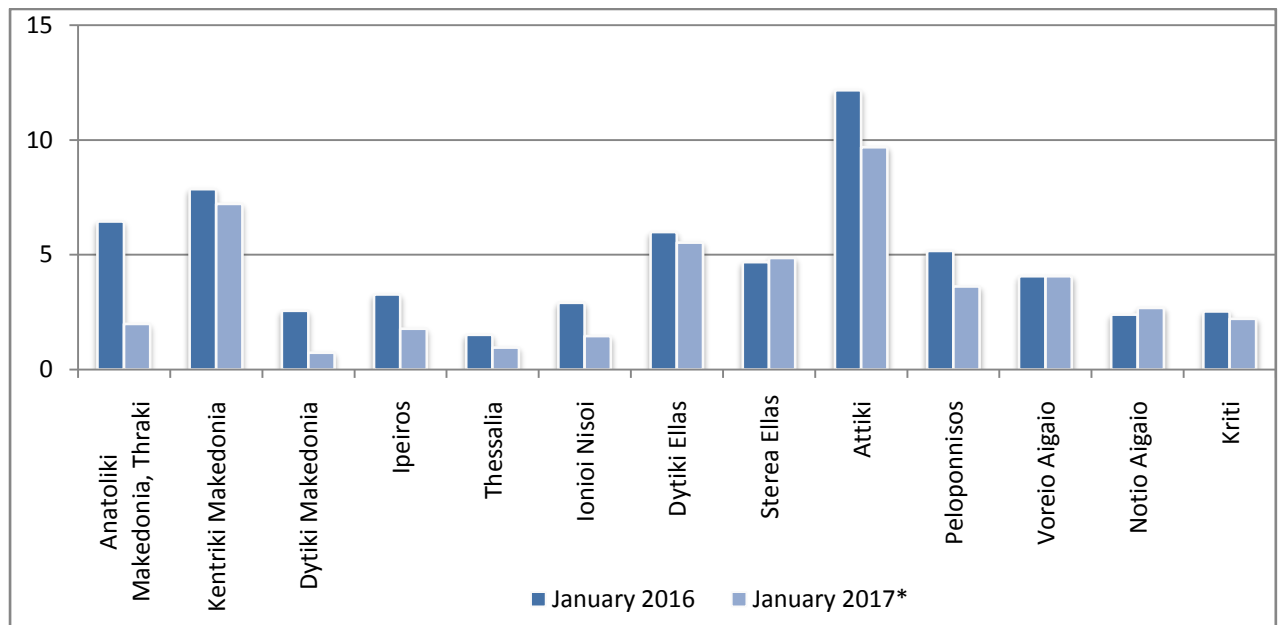
* Provisional data

Graph 5: Total Road traffic accidents and fatalities, 1991-2016



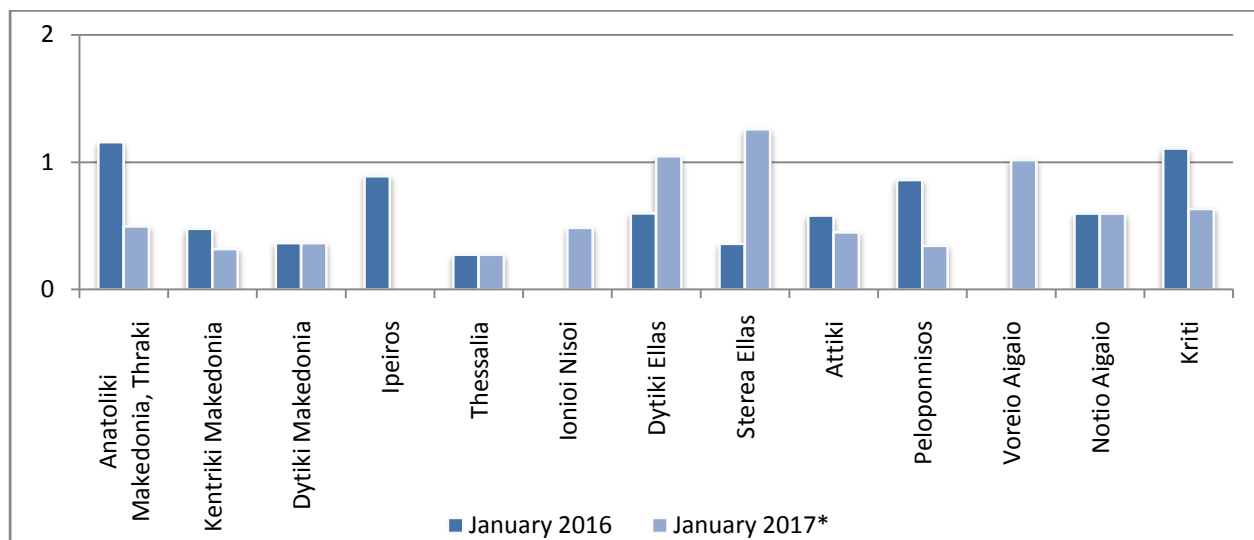
* Provisional data: Apr 16 – Dec 16

Graph 6: Road accidents per 100,000 inhabitants

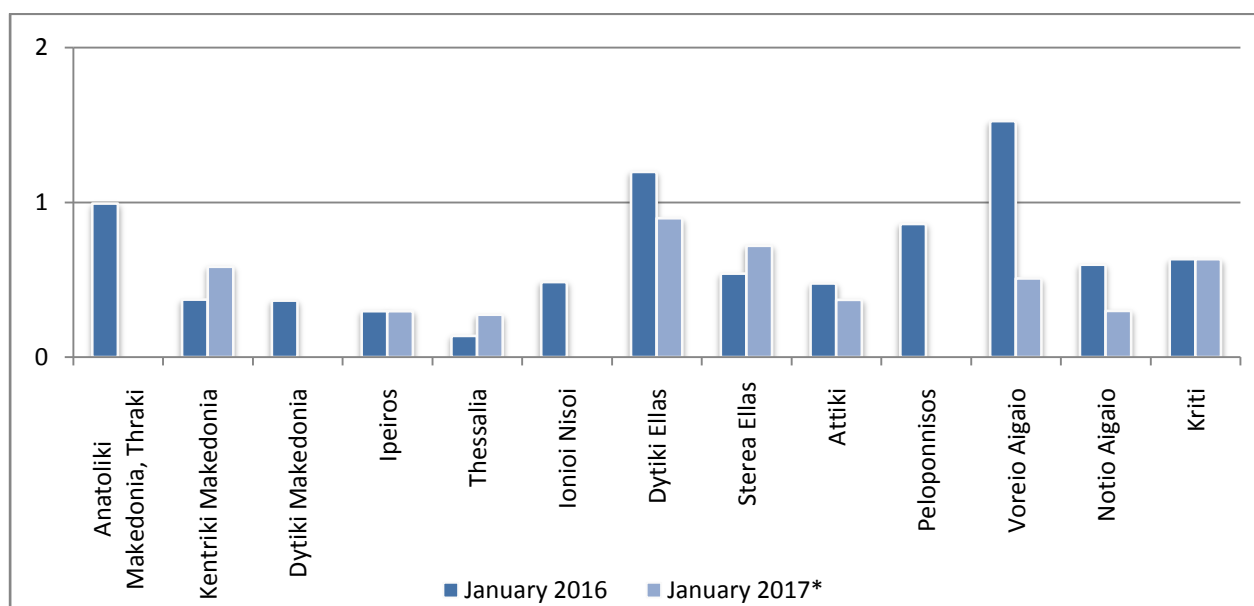


* Provisional data

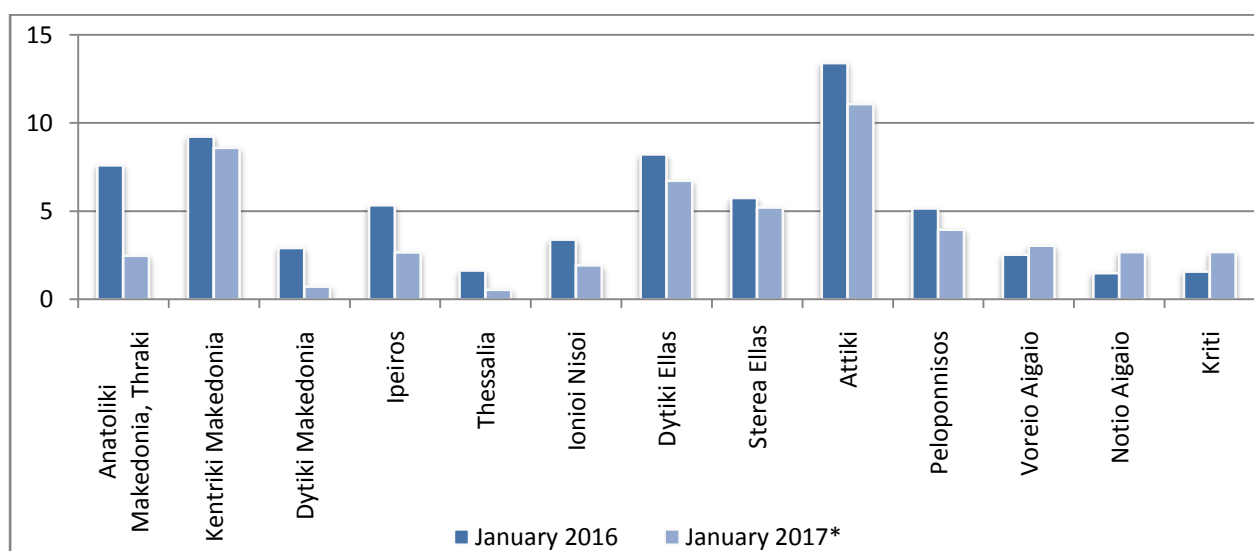
Graph 7: Fatalities per 100,000 inhabitants



Graph 8: Serious injuries per 100,000 inhabitants



Graph 9: Slight injuries per 100,000 inhabitants



* Provisional data

Explanatory Notes

Survey on Road Accidents	<p>The survey on road accidents is conducted on a monthly basis and it records, for each department of Greece and for each month separately, the number of accidents resulting in death or injury, as well as the number of persons injured by categories (drivers, passengers, pedestrians).</p> <p>On a yearly basis, road accidents are further analyzed. The competent agencies for filling in/collecting the forms on road accidents are the local Police Authorities and the local Port Authorities of Greece.</p> <p>The lower level of analysis for the place where an injury road accident occurred is the settlement (oikismos), which is described by a 8-digit geographic code. Data are collected on a monthly basis. The main variables are the following: place of accident, kind of road, casualties, conditions of road surface and type of road.</p>
Legal basis	<p>The Survey on Road Traffic Accidents is governed by Council Decision 93/704 of the European Community.</p>
Reference Period	<p>Monthly.</p>
Availability of Data	<p>Provisional data are available 2 months after the reference month.</p> <p>Final data are available 10 months after the reference year.</p>
National Definitions	<p>Road accident (injury accident): Any accident involving at least one road motor vehicle in motion on a public road or square to which the public has access (excluding yards, industrial sites or vehicle depot of public transport enterprises), resulting in at least one injured or killed person. Accidents with only material damages are not included.</p> <p>Fatality (Death): Any person killed immediately or dying within 30 days as a result of an injury accident (This national definition applies since 01.01.1996)</p> <p>Person injured: Any person who sustained an injury as result of an injury accident, and who normally needs medical treatment.</p> <p>Serious injury: Any person who sustained an injury as result of an injury accident, such as brain damages, mutilation, multiple injuries, which may result in lack of awareness or which are life-threatening.</p> <p>Slight injury: Any person injured who sustained minor and not life-threatening injuries.</p> <p>Vehicle: Include motor vehicles, trolleybuses, motorcycles, bicycles, motorbikes, agricultural and road making machines, animal and hand-drawn vehicles. Railway vehicles are excluded, unless the road accident involves at least one of the aforementioned types of vehicles and therefore, railway vehicles are considered vehicles.</p>
Methodology	<p>The forms of the survey are filled in by the local Police Authorities and the local Port Authorities as well.</p>
References	<p>More information about road accidents is available on ELSTAT's website and more specifically at the link: www.statistics.gr > Population & Social Conditions > Accidents > Road Traffic Accidents.</p> <p>It should be noted that previous press releases and time series are available on ELSTAT's website: www.statistics.gr</p>