



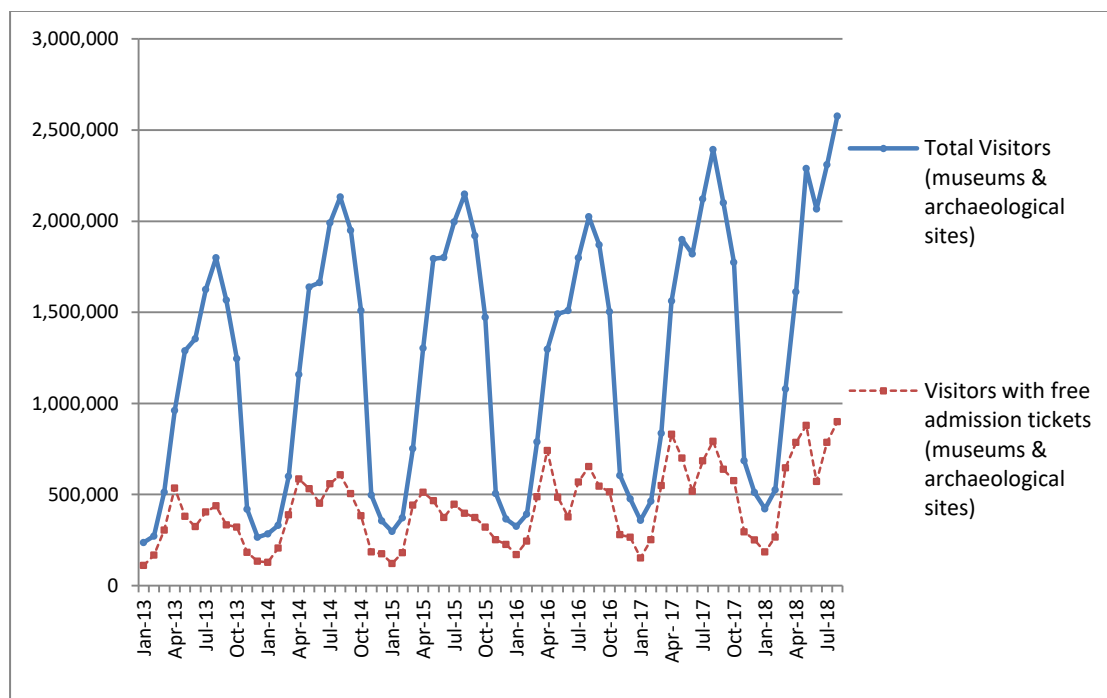
PRESS RELEASE

SURVEY ON MUSEUMS AND ARCHAEOLOGICAL SITES ATTENDANCE AUGUST 2018

The Hellenic Statistical Authority (ELSTAT) announces the results of the *Survey on Museums and Archaeological Sites Attendance* for August 2018. More specifically:

- In August 2018 compared with the corresponding month of 2017, Museums experienced a 3.9% increase in the number of visitors and a 0.7% increase in the number of free admission visitors as well as a 7.9% increase in their receipts (Table 1),
- In August 2018 compared with the corresponding month of 2017, the number of visitors at Archaeological sites recorded an increase of 9.1%, while an increase of 20.2% was observed in the number of free admission visitors and a 4.8% increase in the corresponding receipts (Table 1),
- During the eight-month period from January to August 2018, an increase of 7.7% was observed in the number of visitors of Museums, while an increase of 4.2% was recorded in the number of free admission visitors and an 11.6% increase in the relevant receipts, in comparison with the corresponding period of 2017 (Table 2),
- As regards Archaeological sites, during the eight-month period from January to August 2018, an increase of 14.6% was recorded in the number of visitors, while a 16.8% increase was observed in the number of free admission visitors and a 13.1% increase in the relevant receipts, in comparison with the corresponding period of 2017 (Table 2),

Graph 1: Visitors of Museums and Archaeological sites (Jan 2013 – Aug 2018)



Information:

Social Statistics Division

Section of Culture and Sports statistics,

Argyri Pateraki (Tel: +30 213 1352129, e-mail: ar.pateraki@statistics.gr)

**TABLE 1: VISITORS OF MUSEUMS AND ARCHAEOLOGICAL SITES - TOTAL RECEIPTS
(AUGUST 2017 & AUGUST 2018)**

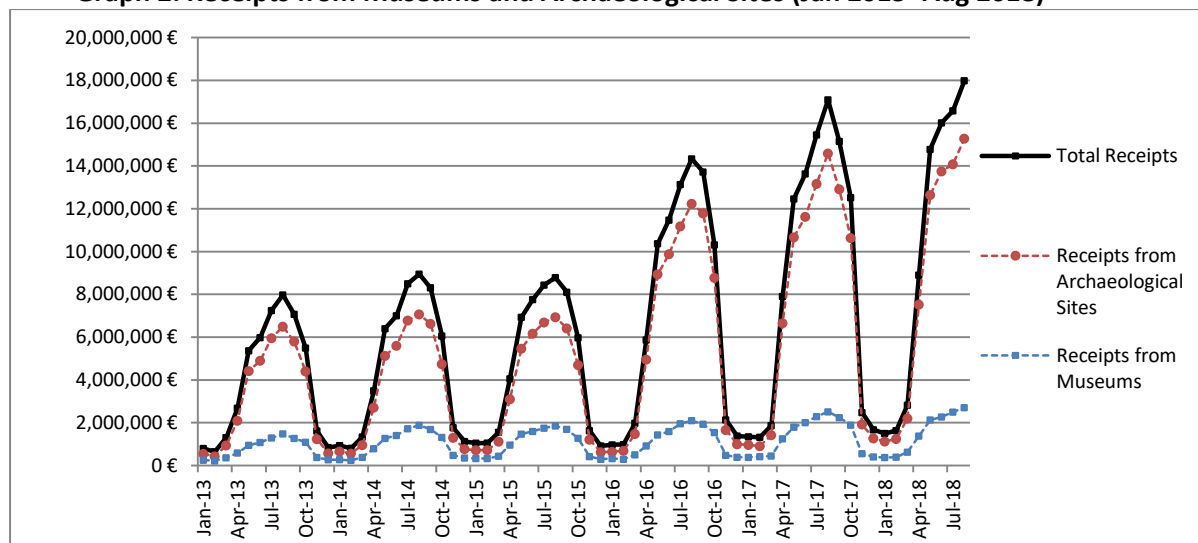
I. VISITORS			
Museums and Archaeological sites	2017	2018	Change 2018/2017
Total number of visitors (A+B)	2,392,991	2,576,738	7.7%
A, Museums (C+E)	673,520	699,988	3.9%
Acropolis Museum	192,113	196,218	2.1%
National Archaeological	63,815	68,945	8.0%
Ancient Olympia	17,863	18,302	2.5%
Palace of the Grand Master (Rhodes)	44,608	45,462	1.9%
Herakleion Archaeological (Crete)	76,184	90,341	18.6%
White Tower	37,960	31,907	-15.9%
Delphi	22,541	25,006	10.9%
Other museums	218,436	223,807	2.5%
B, Archaeological Sites (D+F)	1,719,471	1,876,750	9.1%
Epidavros ⁽¹⁾	63,573	71,791	12.9%
The Acropolis of Mycenae & Atreus' Treasure	53,904	61,519	14.1%
The Acropolis of Athens ⁽²⁾	388,346	393,620	1.4%
Sounio	32,164	35,257	9.6%
The Acropolis of Lindos	88,087	90,496	2.7%
Royal Tombs of Vergina	20,854	21,153	1.4%
Ancient Olympia	84,425	75,269	-10.8%
Knossos (Crete)	122,302	160,299	31.1%
Phaistos (Crete)	15,573	14,565	-6.5%
Ancient Korinthos ⁽¹⁾	19,678	21,117	7.3%
Mystras ⁽¹⁾	21,912	24,230	10.6%
Delphi	43,435	49,482	13.9%
Other archaeological sites	765,218	857,952	12.1%
II, VISITORS WHO PAID TICKET			
	2017	2018	Change 2018/2017
Total number of visitors who paid ticket (C+D)	1,601,203	1,677,225	4.7%
C, Museums	404,392	428,893	6.1%
D, Archaeological sites	1,196,811	1,248,332	4.3%
III, VISITORS WITH FREE ADMISSION TICKETS			
	2017	2018	Change 2018/2017
Total number of visitors with free admission ticket (E+F)	791,788	899,513	13.6%
E, Museums	269,128	271,095	0.7%
F, Archaeological sites	522,660	628,418	20.2%
IV, RECEIPTS (euros)			
	2017	2018	Change 2018/2017
Total Receipts (G+H)	17,092,065.00	17,986,179.00	5.2%
G, Museums	2,508,929.00	2,706,638.00	7.9%
H, Archaeological sites	14,583,136.00	15,279,541.00	4.8%

⁽¹⁾ Flat rate ticket, valid both for the museum and the archaeological site,

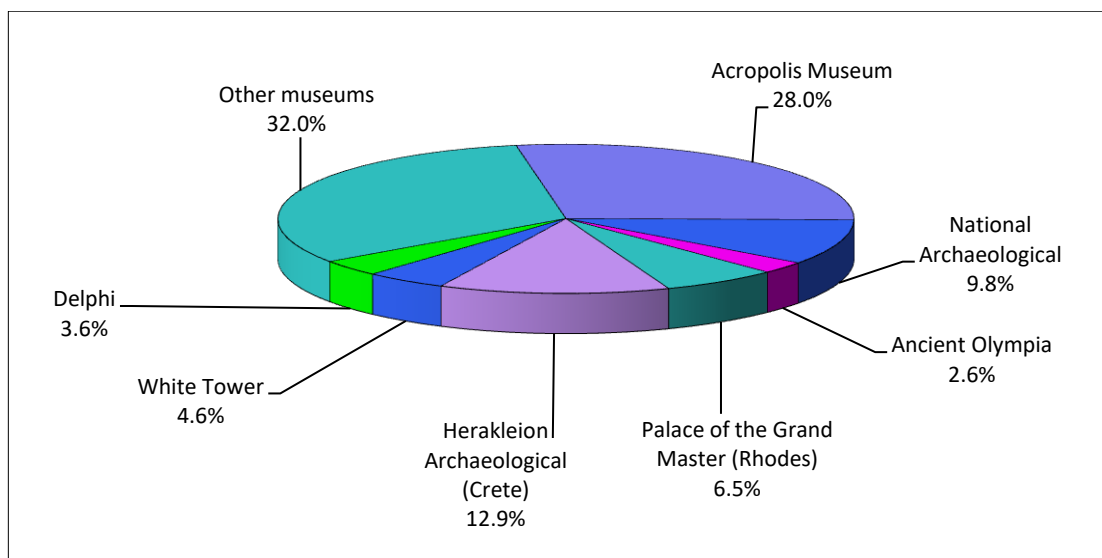
⁽²⁾ From May 2017 onwards, the data for the number of tickets in the archaeological site of the Acropolis of Athens include the tickets of the Ancient Theatre of Dionysos,

The following graphs depict the evolution of the receipts (Graph 2), as well as the number of visitors by Museum and Archaeological Site (Graphs 3 and 4, respectively),

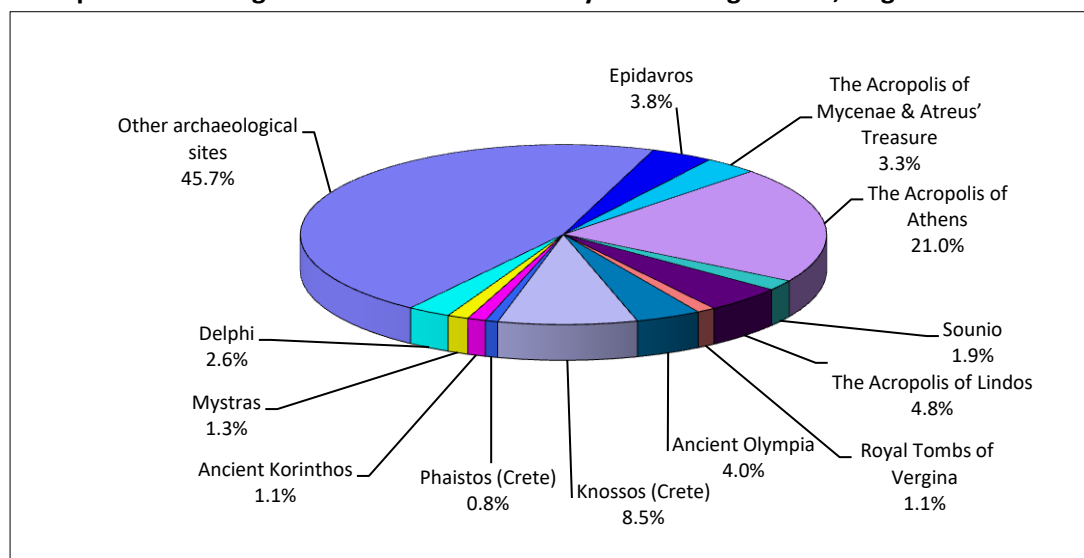
Graph 2: Receipts from Museums and Archaeological Sites (Jan 2013- Aug 2018)



Graph 3: Percentage distribution of Visitors by Museum, August 2018



Graph 4: Percentage distribution of Visitors by Archaeological site, August 2018



**TABLE 2: VISITORS OF MUSEUMS AND ARCHAEOLOGICAL SITES - TOTAL RECEIPTS
(2016, 2017 AND JANUARY-AUGUST 2017 & 2018)**

I, VISITORS					
Museums and Archaeological sites	2016	2017	JANUARY-AUGUST		change
			2017	2018	2018/2017
Total number of visitors (A+B)	14,080,639	16,524,557	11,452,824	12,879,949	12.5%
A, Museums (C+E)	4,515,966	5,191,781	3,588,767	3,866,027	7.7%
Acropolis Museum	1,406,096	1,593,362	1,103,167	1,203,999	9.1%
National Archaeological	447,093	545,555	378,367	394,109	4.2%
Ancient Olympia	124,136	145,118	105,438	114,034	8.2%
Palace of the Grand Master (Rhodes)	237,361	235,413	161,428	163,146	1.1%
Herakleion Archaeological (Crete)	394,915	426,191	282,001	373,222	32.3%
White Tower	290,192	268,149	188,394	149,515	-20.6%
Delphi	166,091	211,827	151,378	173,043	14.3%
Other museums	1,450,082	1,766,166	1,218,594	1,294,959	6.3%
B, Archaeological Sites (D+F)	9,564,673	11,332,776	7,864,057	9,013,922	14.6%
Epidavros ⁽¹⁾	375,437	469,060	347,450	405,608	16.7%
The Acropolis of Mycenae & Atreus' Treasure ⁽³⁾	342,854	412,397	299,908	361,292	20.5%
The Acropolis of Athens	1,807,580	2,766,218	1,855,522	2,204,450	18.8%
Sounio	222,800	259,709	181,143	219,184	21.0%
The Acropolis of Lindos	421,070	441,012	300,624	334,389	11.2%
Royal Tombs of Vergina	186,627	203,632	144,897	158,864	9.6%
Ancient Olympia	423,424	481,252	339,260	344,821	1.6%
Knossos (Crete)	611,455	634,710	434,440	586,837	35.1%
Phaistos (Crete)	77,071	95,182	55,564	87,261	57.0%
Ancient Korinthos ⁽¹⁾	153,307	191,836	137,178	134,076	-2.3%
Mystras ⁽¹⁾	114,293	125,549	92,254	107,250	16.3%
Delphi	290,705	345,804	242,877	292,147	20.3%
Other archaeological sites	4,538,050	4,906,415	3,432,940	3,777,743	10.0%
II, VISITORS WHO PAID TICKET					
	2016	2017	JANUARY-AUGUST		change
			2017	2018	2018/2017
Total number of visitors who paid ticket (C+D)	8,749,957	10,288,448	6,976,165	7,861,069	12.7%
C, Museums	2,406,665	2,831,466	1,918,141	2,125,395	10.8%
D, Archaeological sites	6,343,292	7,456,982	5,058,024	5,735,674	13.4%
III, VISITORS WITH FREE ADMISSION TICKETS					
	2016	2017	JANUARY-AUGUST		change
			2017	2018	2017/2016
Total number of visitors with free admission ticket (E+F)	5,330,682	6,236,109	4,476,659	5,018,880	12.1%
E, Museums	2,109,301	2,360,315	1,670,626	1,740,632	4.2%
F, Archaeological sites	3,221,381	3,875,794	2,806,033	3,278,248	16.8%
IV, RECEIPTS (euros)					
	2016	2017	JANUARY-AUGUST		change
			2017	2018	2017/2016
Total Receipts (G+H)	86,647,638.00	102,887,879.00	71,071,969.00	80,210,234.00	12.9%
G, Museums	13,448,464.00	16,175,121.00	11,092,141.00	12,377,181.00	11.6%
H, Archaeological sites	73,199,174.00	86,712,758.00	59,979,828.00	67,833,053.00	13.1%

⁽¹⁾ Flat rate ticket, valid both for the museum and the archaeological site,

⁽²⁾ From May 2017 onwards, the data for the number of tickets in the archaeological site of the Acropolis of Athens include the tickets of the Ancient Theatre of Dionysos,

⁽³⁾ The data on the number of visitors to the archaeological site of the Acropolis of Mycenae & Atreus' Treasure for May 2017 have been revised

EXPLANATORY NOTES

Survey on Museums and Archaeological Sites Attendance	The Survey on Museums and Archaeological Sites Attendance has been producing results since 1970, The survey collects data from the Archaeological Receipts Fund (ARF) of the Ministry of Culture and Sports concerning the number of visitors and the receipts from the tickets sold in the Museums and Archaeological sites of the country, The corresponding data for the Acropolis Museum are available from December 2009 onwards,
Legal Framework	The survey is conducted since 1970 on a regular basis and it produces results on a monthly and yearly basis, in compliance with the Joint Ministerial Decision 15189/B379/73,
Reference Period	01/08/2018 to 31/08/2018,
Methodology and Definitions	The Survey is conducted on a monthly basis from data collected from the Archaeological Receipts Fund (ARF) of the Ministry of Culture and Sports concerning on the number of visitors and the receipts from the tickets sold in the Museums and Archaeological sites of the country, ELSTAT tabulates the data on Museums and the Archaeological sites for the whole of the Country, by month and by year,

Information on ticket payment

- From January 2002 onwards, the number of Museums' visitors includes both the visitors who have bought a ticket and the visitors with free admission ticket, From 16-06-1996 onwards, the Museums and the Archaeological sites all over Greece have a paid admission for all the visitors, Greeks and foreigners, all over the year, except in the following days, which are free admission days:
- National Holidays (25th of March and 28th of October)
- The first Sunday every month during the five month period from 1 November to 31 March
- The 6th of March (in memory of Melina Merkouri)
- The 18th of April (International Monuments Day)
- The 18th of May (International Museums Day)
- The 5th of June (International Environment Day)
- The last weekend of September, annually (European Heritage Days)

Free admission tickets

The admission to Museums and Archaeological site is free for:

- Young people from EU-countries aged under 18 years, with current identification card to confirm their age,
- Students of Universities and of Higher and Technical Education Institutions or equivalent institutions of EU-countries, as well as of Tour Guide Training Institutes, with valid student identification card or International Student Identity Card (ISIC)
- Employees of the Hellenic Ministry of Culture, with valid professional identity card
- ICOM and ICOMOS cardholders
- Tour Guides with their current working identification card from the Ministry of Development
- Teachers accompanying pupils and students on primary, secondary and tertiary education institution tours
- Journalists with valid journalists' identification card
- Members of Associations and Societies of Friends of Museums and Archaeological Sites
- Official guests of the Greek Government, after relevant approval
- Escorts of blind persons and persons with disabilities
- Free admission cardholders
- Holders of the Culture Card

Number of flat rate tickets

From April 1999 onwards, in some museums and the nearby archaeological sites, in addition to the ordinary ticket, a new "flat rate ticket" was established, which is valid for both the museum and the nearby archaeological site, The total number of these flat rate tickets for **August 2018** was **159,239**.

More information on the Survey on Museums and Archaeological Sites Attendance and detailed time series are available on: <http://www.statistics.gr/en/statistics/-/publication/SCI21/->