



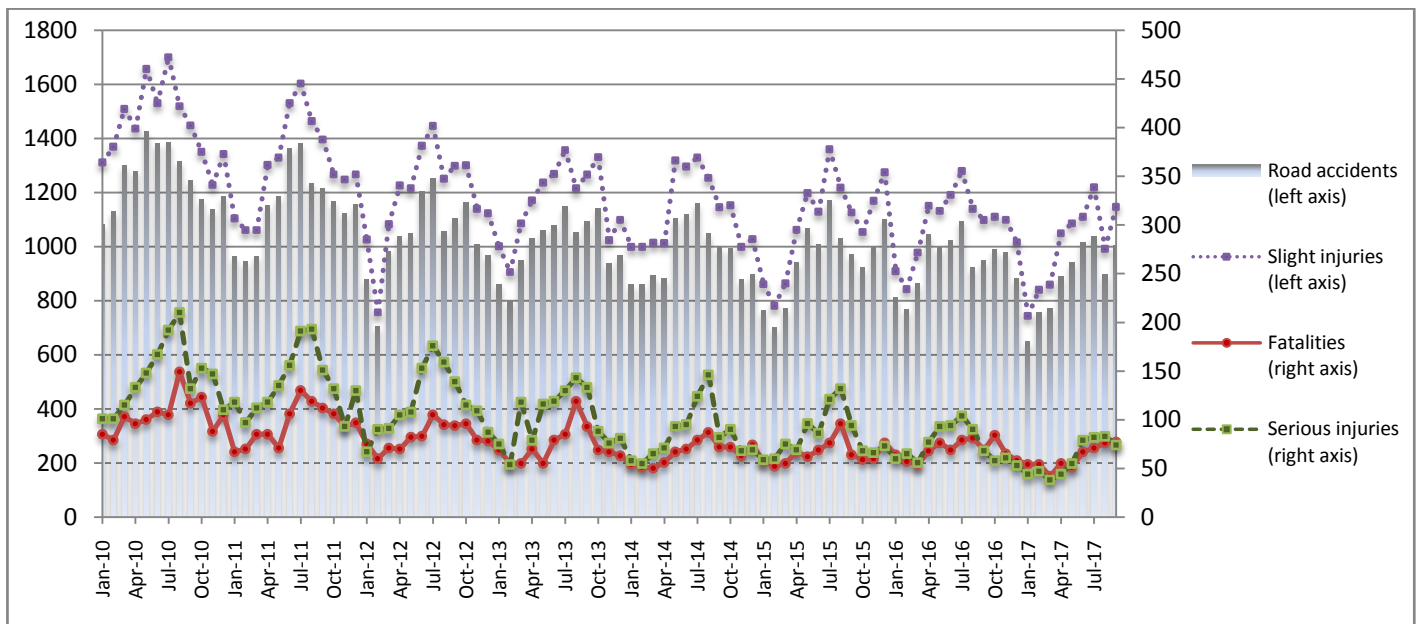
PRESS RELEASE

ROAD ACCIDENTS: September 2017

The Hellenic Statistical Authority (ELSTAT) announces provisional¹ data on Road Accidents for September 2017. In particular, the road traffic accidents which occurred in Greece, resulting in death or injury, increased by 6.1% in comparison with the corresponding month of 2016 (1,005 road accidents in September 2017, against 947 road accidents in September 2016).

The casualties of the injury-causing accidents that occurred in September 2017 were as follows: 77 deaths, 74 serious injuries and 1,147 slight injuries. In contrast, in September 2016 the corresponding figures were: 69 deaths, 68 serious injuries and 1,098 slight injuries. Therefore, road accident casualties in September 2017 increased by 11.6% for deaths, by 8.8% for serious injuries and by 4.5% for slight injuries.

**Graph 1: Road traffic accidents and casualties,
January 2010 - September 2017**



Provisional data: Jan 17 – Sept 17

Information:

Social Statistics Division
Justice and Public Order Statistics Section
D. Athanasopoulou
Tel: +30 213 1352767
Fax : +30 213 1352764
e-mail: d.athanasopoulou@statistics.gr

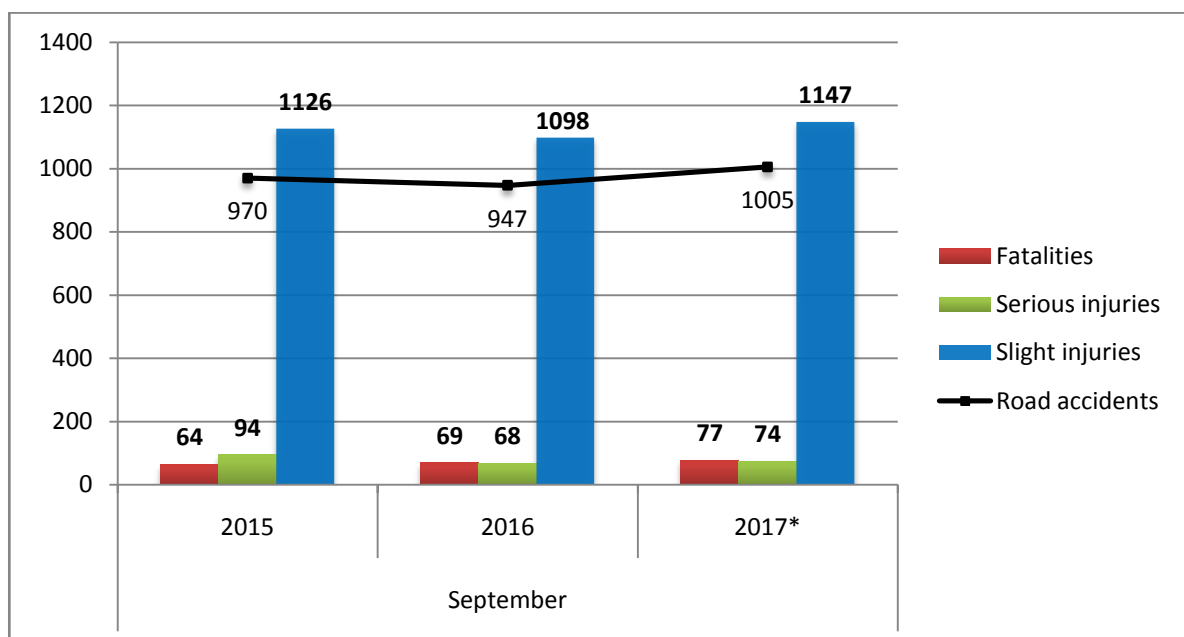
¹ Data for the reference year are provisional until the finalisation of the annual data, which become final 10 months after the end of the reference year. During these 10 months the provisional data are updated on the basis of the data of the Road Accident Forms which are transmitted to ELSTAT by Police Authorities.

Table 1: Road traffic accidents and casualties, September 2015-2017*

	September				
	2015	2016	2016/2015 (%)	2017*	2017*/2016 (%)
Road accidents	970	947	-2.4%	1,005	6.1%
Fatalities	64	69	7.8%	77	11.6%
Total injuries	1,220	1,166	-4.4%	1,221	4.7%
Serious injuries	94	68	-27.7%	74	8.8%
Slight injuries	1,126	1,098	-2.5%	1,147	4.5%

* Provisional data

Graph 2: Road traffic accidents and casualties, September 2015-2017*



* Provisional data

Table 2: Road traffic accidents and casualties, by region and department, September 2016 – 2017*

Region and Department	Road accidents			Fatalities			Serious injuries			Slight injuries		
	2016	2017*	%	2016	2017*	%	2016	2017*	%	2016	2017*	%
Greece Total	947	1,005	6.1%	69	77	11.6%	68	74	8.8%	1,098	1,147	4.5%
Anatoliki Makedonia, Thraki (East Macedonia and Thrace)	33	44	33.3%	5	6	20.0%	4	6	50.0%	33	46	39.4%
Drama	10	12	20.0%	2	1		0	0		9	19	
Evros	3	11	266.7%	0	3		1	1		3	8	
Kavala	6	8	33.3%	2	1		2	1		5	8	
Xanthi	3	9	200.0%	1	1		0	3		3	7	
Rodopi	11	4	-63.6%	0	0		1	1		13	4	
Kentriki Makedonia (Central Macedonia)	213	185	-13.1%	14	8	-42.9%	10	5	-50.0%	280	218	-22.1%
Imathia	7	3	-57.1%	0	1		0	0		9	3	
Thessaloniki	171	157	-8.2%	5	4		4	3		230	191	
Kilkis	8	5	-37.5%	2	0		0	1		10	6	
Pella	5	2	-60.0%	1	0		2	0		3	2	
Pieria	3	1	-66.7%	2	0		2	0		1	1	
Serres	6	6	0.0%	3	1		1	0		7	7	
Chalkidiki	13	11	-15.4%	1	2		1	1		20	8	
Dytiki Makedonia (West Macedonia)	9	10	11.1%	2	1	-50.0%	0	2	-	12	11	-8.3%
Grevena	1	0	-100.0%	0	0		0	0		1	0	
Kastoria	2	2	0.0%	0	1		0	0		4	1	
Kozani	6	8	33.3%	2	0		0	2		7	10	
Florina	0	0	-	0	0		0	0		0	0	
Ipeiros (Epirus)	17	12	-29.4%	3	3	0.0%	3	0	-100.0%	20	17	-15.0%
Arta	0	0	-	0	0		0	0		0	0	
Thesprotia	3	2	-33.3%	1	1		0	0		3	1	
Ioannina	7	8	14.3%	1	2		2	0		11	9	
Preveza	7	2	-71.4%	1	0		1	0		6	7	
Thessalia (Thessaly)	12	21	75.0%	2	5	150.0%	4	3	-25.0%	9	20	122.2%
Karditsa	3	7	133.3%	1	2		1	0		3	5	
Larissa	3	10	233.3%	0	2		0	1		3	10	
Magnissia	4	1	-75.0%	1	0		2	1		2	0	
Trikala	2	3	50.0%	0	1		1	1		1	5	
Ionioi Nisoi (Ionian Islands)	21	19	-9.5%	3	2	-33.3%	1	2	100.0%	20	21	5.0%
Zakynthos	3	1	-66.7%	1	0		0	0		2	1	
Kerkyra	7	8	14.3%	0	1		0	1		7	7	
Kefallinia	7	2	-71.4%	1	0		1	0		6	3	
Lefkada	4	8	100.0%	1	1		0	1		5	10	

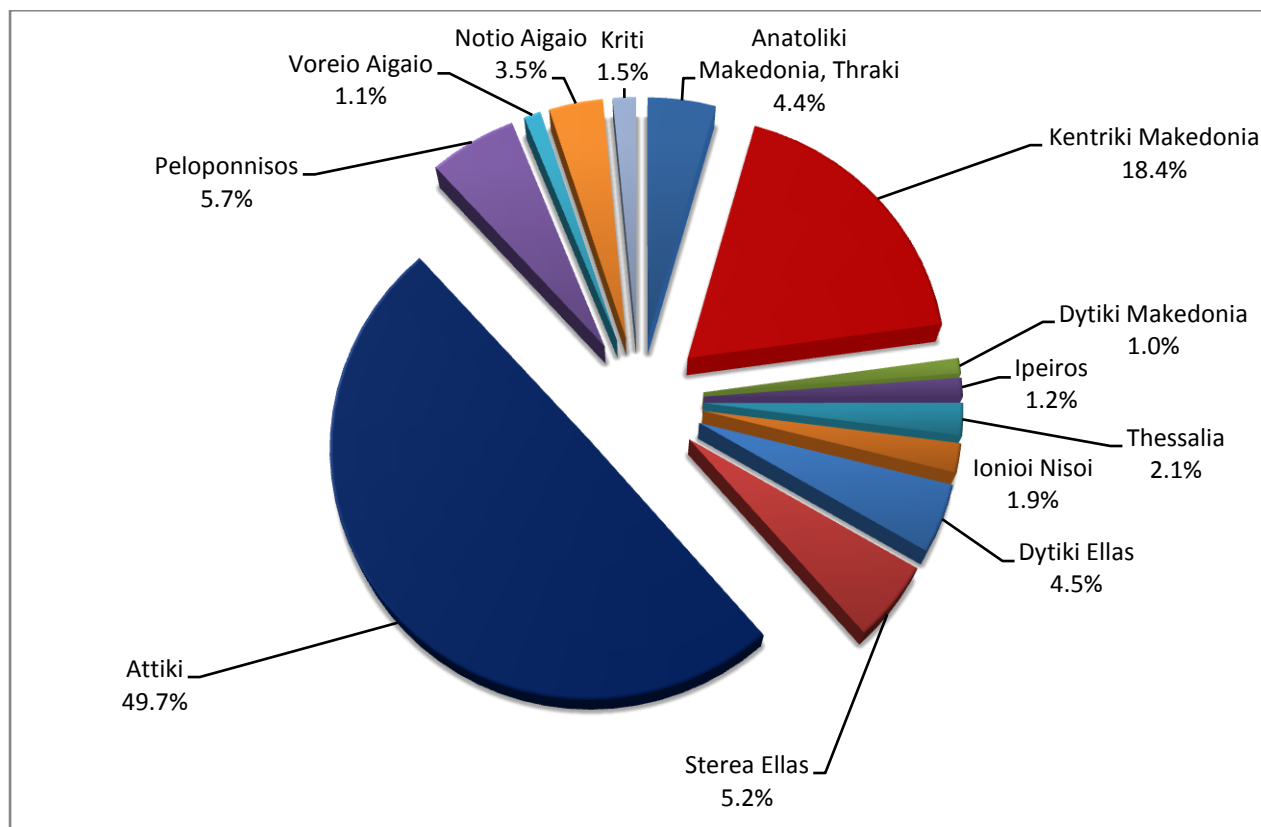
* Provisional data

Table 2: Road traffic accidents and casualties, by region and department, September 2016 – 2017*
(Continued)

Region and Department	Road accidents			Fatalities			Serious injuries			Slight injuries		
	2016	2017*	%	2016	2017*	%	2016	2017*	%	2016	2017*	%
Dytiki Ellas (West Greece)	40	45	12.5%	6	14	133.3%	7	2	-71.4%	47	51	8.5%
Etolia & Akarnania	11	16	45.5%	2	6		2	0		15	18	
Achaia	19	23	21.1%	1	6		3	2		24	27	
Ilia	10	6	-40.0%	3	2		2	0		8	6	
Stereia Ellas	34	52	52.9%	5	6	20.0%	8	8	0.0%	28	54	92.9%
Viotia	8	5	-37.5%	0	2		2	0		7	6	
Evia	11	20	81.8%	3	2		5	3		7	22	
Evrytania	2	0	-100.0%	0	0		0	0		2	0	
Fthiotida	9	24	166.7%	1	2		0	3		9	22	
Fokida	4	3	-25.0%	1	0		1	2		3	4	
Attiki (Attica)	452	499	10.4%	19	15	-21.1%	13	24	84.6%	530	572	7.9%
Peloponnisos (Peloponnese)	41	57	39.0%	2	11	450.0%	6	8	33.3%	41	68	65.9%
Argolida	8	10	25.0%	0	1		2	2		7	15	
Arkadia	5	9	80.0%	1	3		1	3		4	10	
Korinthia	16	13	-18.8%	1	1		2	2		16	13	
Lakonia	7	14	100.0%	0	2		0	1		9	21	
Messinia	5	11	120.0%	0	4		1	0		5	9	
Voreio Aigaio (North Aegean)	14	11	-21.4%	0	0	-	2	2	0.0%	19	12	-36.8%
Lesvos	4	5	25.0%	0	0		1	1		3	5	
Samos	5	4	-20.0%	0	0		0	0		7	6	
Chios	5	2	-60.0%	0	0		1	1		9	1	
Notio Aigaio (South Aegean)	41	35	-14.6%	3	1	-66.7%	9	6	-33.3%	42	48	14.3%
Dodekanissos	21	18	-14.3%	2	1		6	2		19	23	
Kyklades	20	17	-15.0%	1	0		3	4		23	25	
Kriti (Crete)	20	15	-25.0%	5	5	0.0%	1	6	500.0%	17	9	-47.1%
Iraklio	8	6	-25.0%	2	2		0	3		7	3	
Lassithi	4	1	-75.0%	0	1		0	1		4	1	
Rethymno	1	3	200.0%	1	2		0	1		2	1	
Chania	7	5	-28.6%	2	0		1	1		4	4	

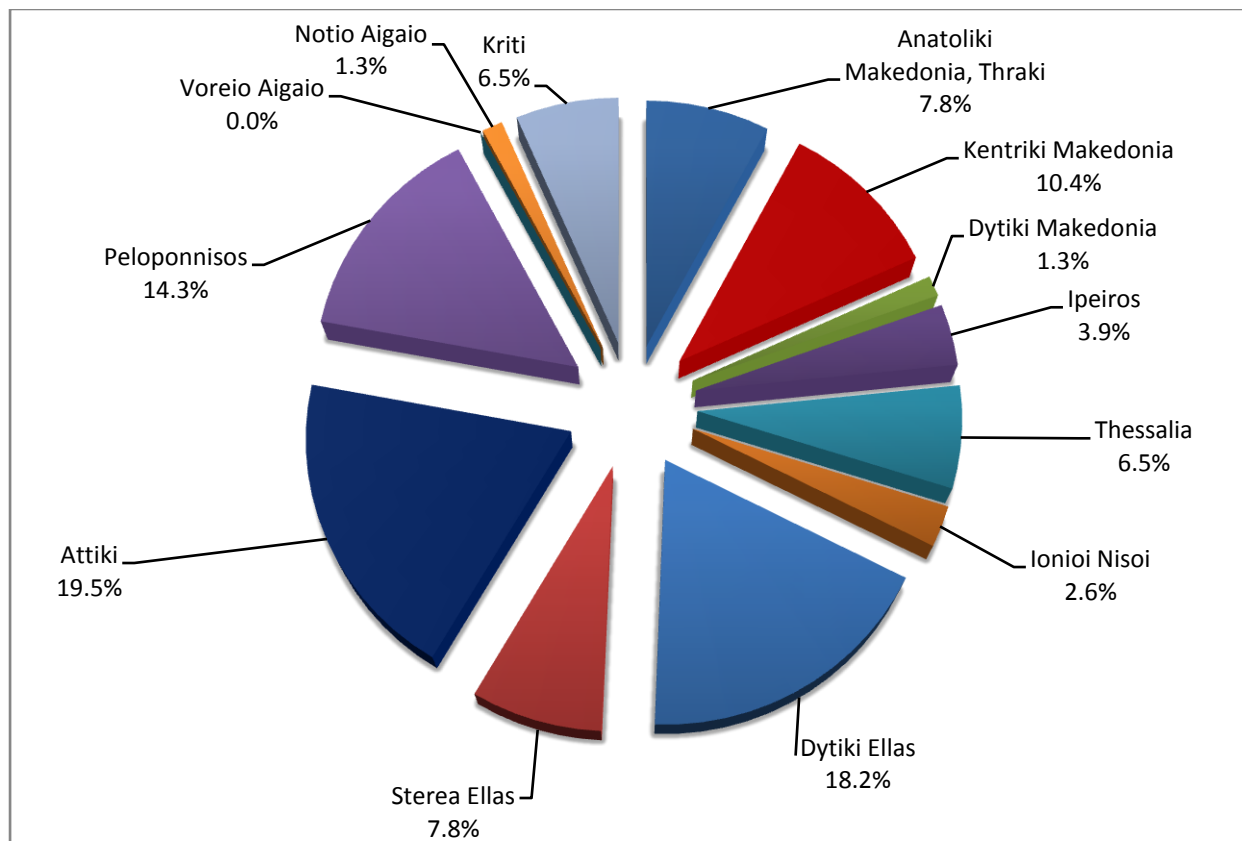
* Provisional data

**Graph 3: Road traffic accidents by region,
September 2017 ***



* Provisional data

**Graph 4: Fatalities by region,
September 2017 ***



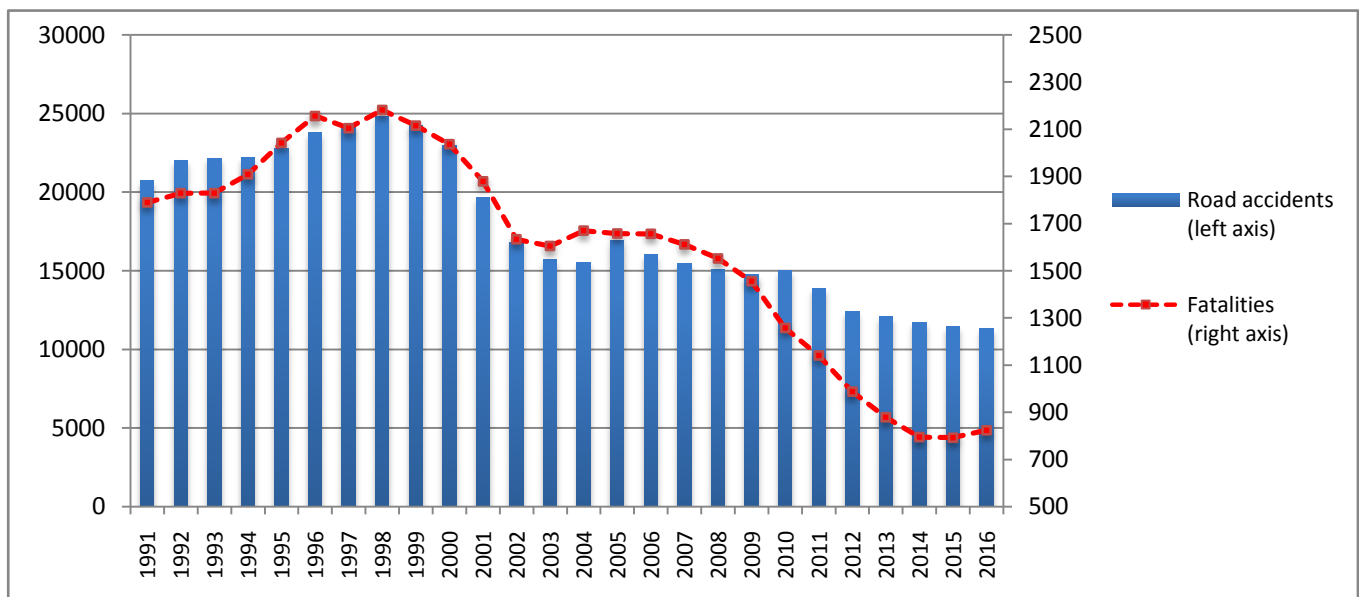
* Provisional data

Table 3: Road Traffic Accidents and casualties for the period January - September 2015, 2016 and 2017*

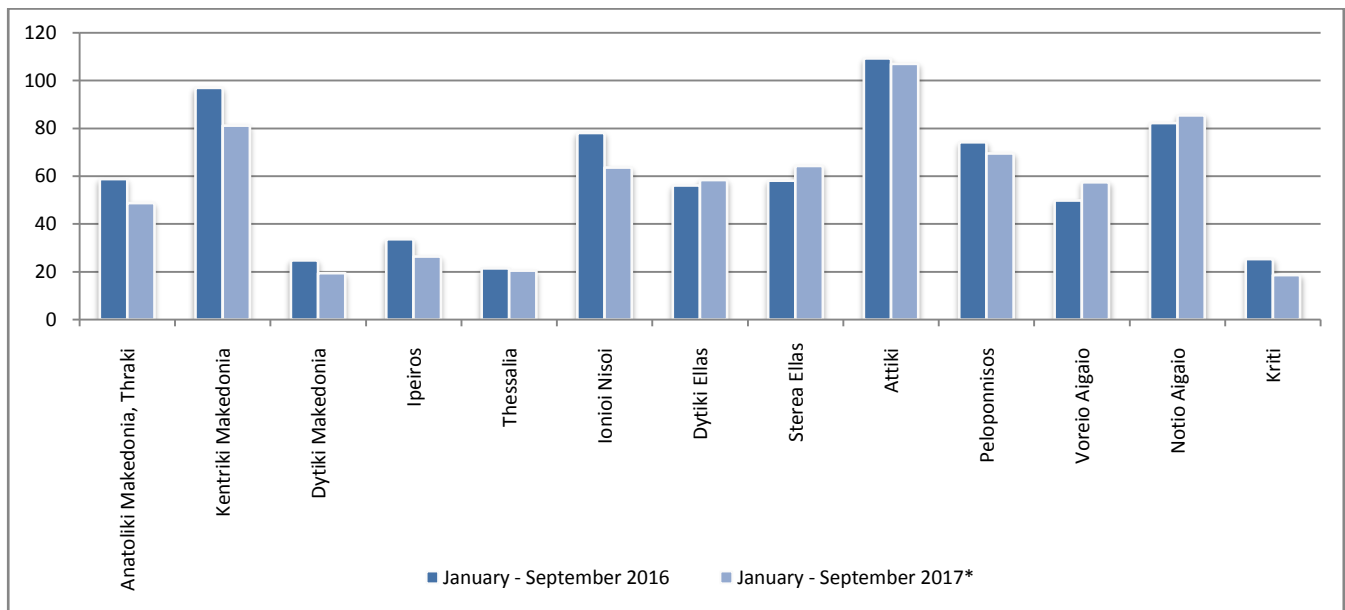
	2015		2016		2017 *	
	January - September	Total year	January - September	Total year	January - September	September
Road Accidents	8,416	11,440	8,469	11,318	7,957	
Annual Change (%)			0.6%	-1.1%	-6.0%	
Fatalities	598	793	617	824	547	
Annual Change (%)			3.2%	3.9%	-11.3%	
Serious injuries	792	999	707	879	546	
Annual Change (%)			-10.7%	-12.0%	-22.8%	
Slight injuries	9,599	13,097	9,721	12,946	9,046	
Annual Change (%)			1.3%	-1.2%	-6.9%	

* Provisional data

Graph 5: Total Road traffic accidents and fatalities, 1991-2016

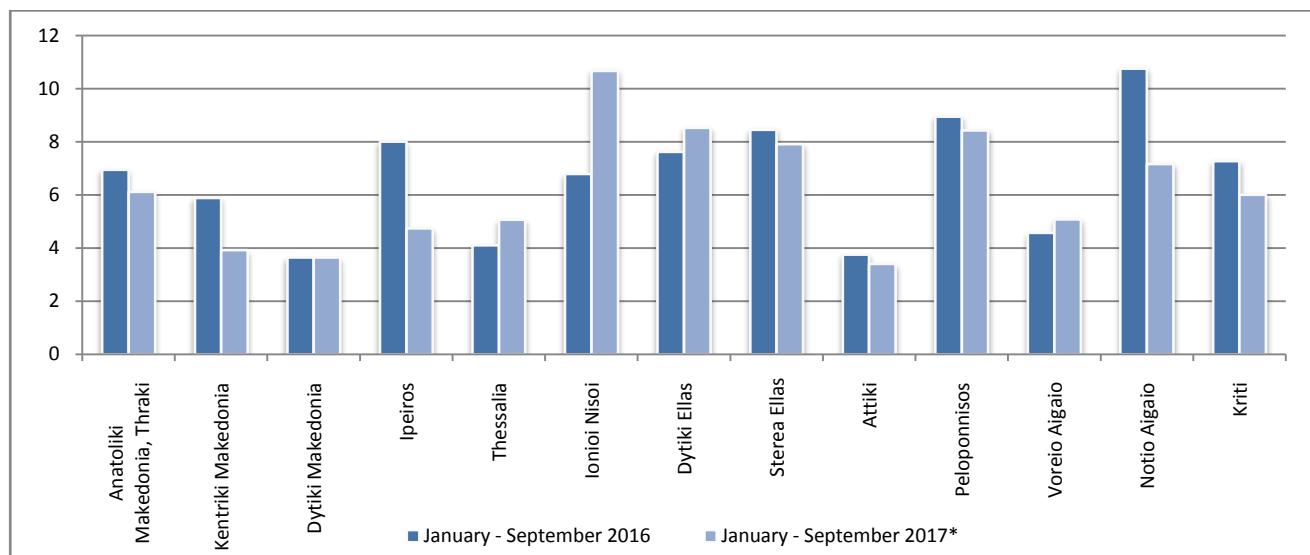


Graph 6: Road accidents per 100,000 inhabitants

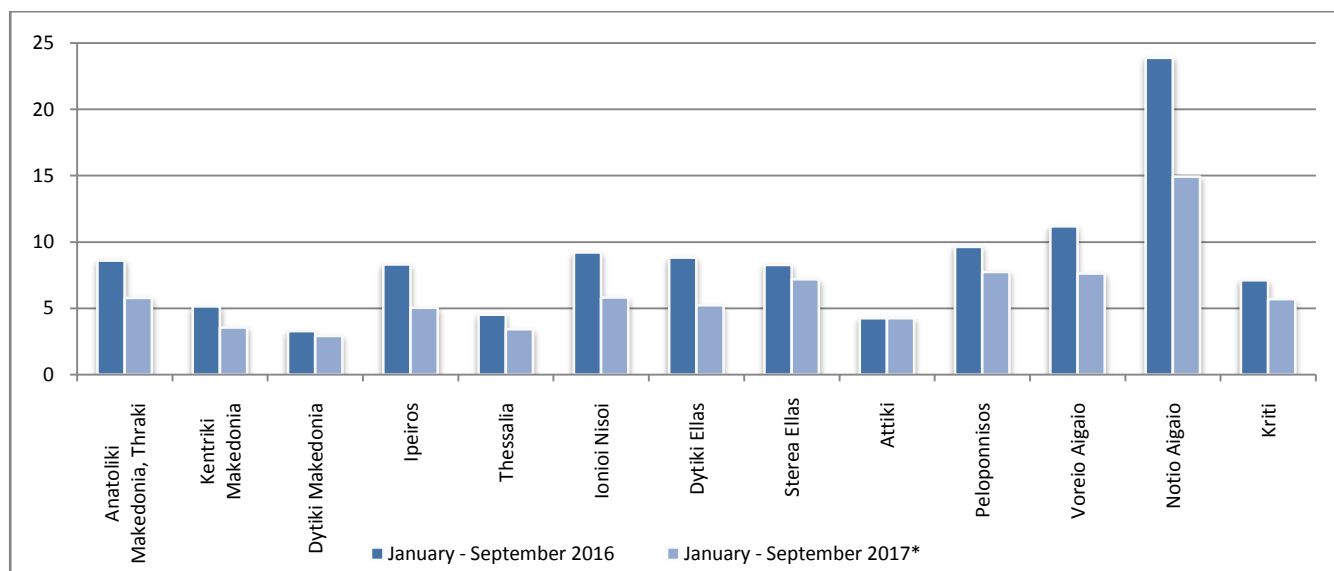


* Provisional data

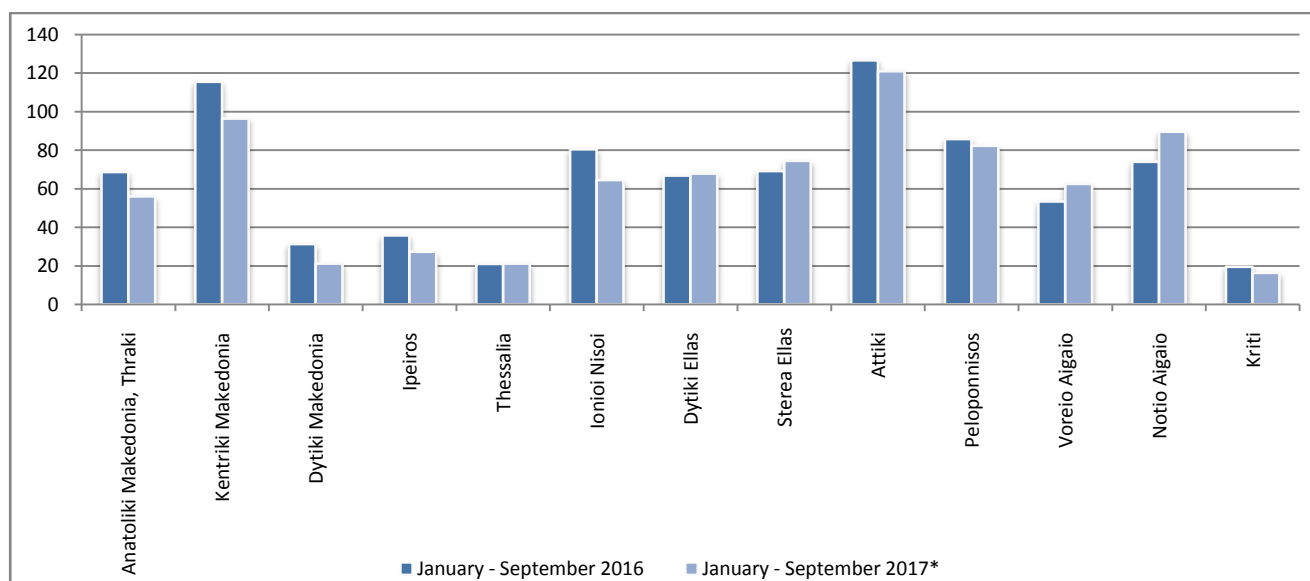
Graph 7: Fatalities per 100,000 inhabitants



Graph 8: Serious injuries per 100,000 inhabitants



Graph 9: Slight injuries per 100,000 inhabitants



* Provisional data

Explanatory Notes

Survey on Road Accidents	<p>The survey on road accidents is conducted on a monthly basis and it records, for each department of Greece and for each month separately, the number of accidents resulting in death or injury, as well as the number of persons injured by categories (drivers, passengers, pedestrians).</p> <p>On a yearly basis, road accidents are further analyzed. The competent agencies for filling in/collecting the forms on road accidents are the local Police Authorities and the local Port Authorities of Greece.</p> <p>The lower level of analysis for the place where an injury road accident occurred is the Municipal – Local Commune, which is described by a 8-digit geographic code. Data are collected on a monthly basis. The main variables are the following: place of accident, kind of road, casualties, conditions of road surface and type of road.</p>
Legal basis	<p>The Survey on Road Traffic Accidents is governed by Council Decision 93/704 of the European Community.</p>
Reference Period	<p>Monthly.</p>
Availability of Data	<p>Provisional data are available 2 months after the reference month.</p> <p>Final data are available 10 months after the reference year.</p>
National Definitions	<p>Road accident (injury accident): Any accident involving at least one road motor vehicle in motion on a public road or square to which the public has access (excluding yards, industrial sites or vehicle depot of public transport enterprises), resulting in at least one injured or killed person. Accidents with only material damages are not included.</p> <p>Fatality (Death): Any person killed immediately or dying within 30 days as a result of an injury accident (This national definition applies since 01.01.1996)</p> <p>Person injured: Any person who sustained an injury as result of an injury accident, and who normally needs medical treatment.</p> <p>Serious injury: Any person who sustained an injury as result of an injury accident, such as brain damages, mutilation, multiple injuries, which may result in lack of awareness or which are life-threatening.</p> <p>Slight injury: Any person injured who sustained minor and not life-threatening injuries.</p> <p>Vehicle: Include motor vehicles, trolleybuses, motorcycles, bicycles, motorbikes, agricultural and road making machines, animal and hand-drawn vehicles. Railway vehicles are excluded, unless the road accident involves at least one of the aforementioned types of vehicles and therefore, railway vehicles are considered vehicles.</p>
Methodology	<p>The forms of the survey are filled in by the local Police Authorities and the local Port Authorities as well.</p>
References	<p>More information about road accidents is available on ELSTAT's website and more specifically at the link: www.statistics.gr > Population & Social Conditions > Accidents > Road Traffic Accidents.</p> <p>It should be noted that previous press releases and time series are available on ELSTAT's website: www.statistics.gr</p>