



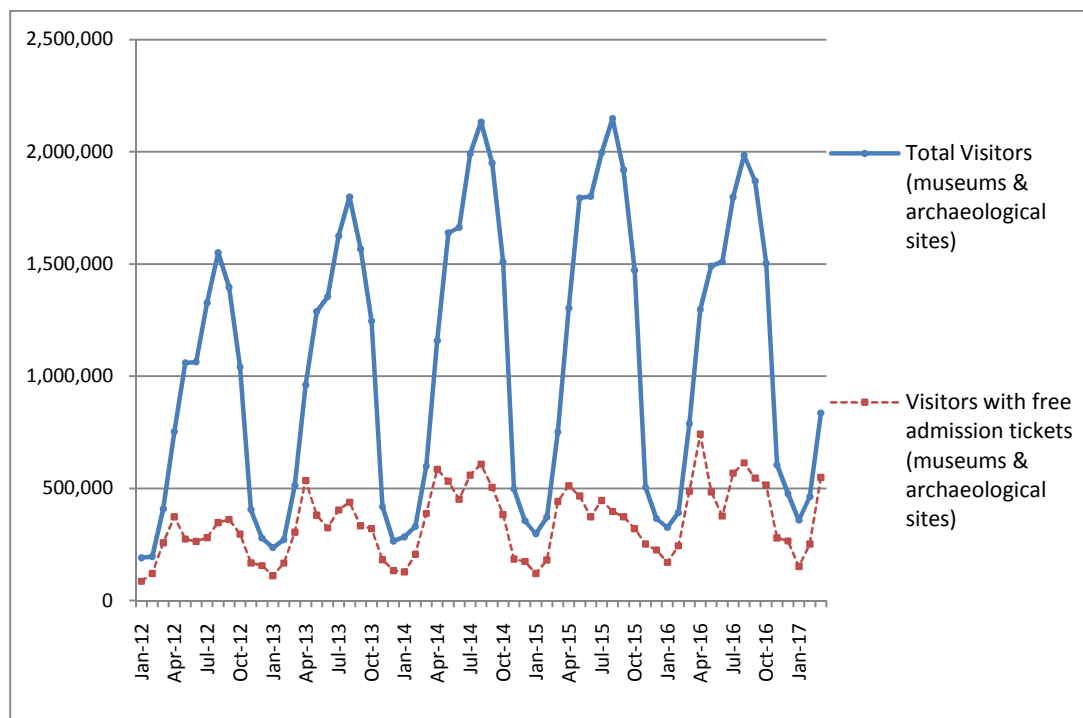
PRESS RELEASE

SURVEY ON MUSEUMS AND ARCHAEOLOGICAL SITES ATTENDANCE MARCH 2017

The Hellenic Statistical Authority (ELSTAT) announces the results of the *Survey on Museums and Archaeological Sites Attendance* for March 2017. More specifically:

- In March 2017 compared with the corresponding month of 2016, Museums experienced a 11.4% increase in the number of visitors and a 16.3% increase in the number of free admission visitors as well as a 11.4% decrease in their receipts (Table 1).
- In March 2017 compared with the corresponding month of 2016, the number of visitors at Archaeological sites recorded an increase of 2.4%, while a increase of 9.9% was observed in the number of free admission visitors and a 3.8% decrease in the corresponding receipts (Table 1).
- During the three-month period from January to March 2017, an increase of 14.7% was observed in the number of visitors of Museums, while an increase of 9.6% was recorded in the number of free admission visitors and a 11.0% increase in the relevant receipts, in comparison with the corresponding period of 2016 (Table 2).
- As regards Archaeological sites, during the three-month period from January to March 2017, an increase of 6.5% was recorded in the number of visitors, while a 2.2% increase was observed in the number of free admission visitors and a 17.3% increase in the relevant receipts, in comparison with the corresponding period of 2016 (Table 2).

Graph 1: Visitors of Museums and Archaeological sites (Jan 2012 – Mar 2017)



Information:

Social Statistics Division

Section of Culture and Sports statistics,

Argyro Pateraki (Tel: +30 213 1352129, e-mail: ar.pateraki@statistics.gr)

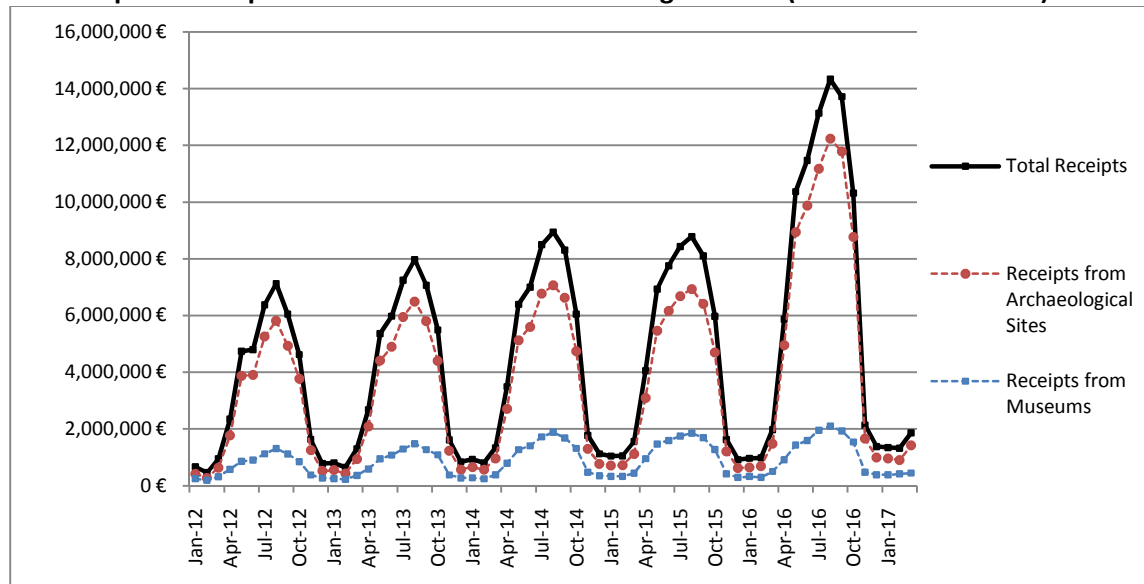
**TABLE 1: VISITORS OF MUSEUMS AND ARCHAEOLOGICAL SITES - TOTAL RECEIPTS
(MARCH 2016 & MARCH 2017)**

I. VISITORS			
Museums and Archaeological sites	2016	2017	Change 2017/2016
Total number of visitors (A+B)	788,640	835,955	6.0%
A. Museums (C+E)	315,380	351,226	11.4%
Acropolis Museum	111,203	131,346	18.1%
National Archaeological	37,739	43,895	16.3%
Ancient Olympia	11,061	11,422	3.3%
Palace of the Grand Master (Rhodes)	4,640	3,619	-22.0%
Herakleion Archaeological (Crete)	20,005	10,645	-46.8%
White Tower	27,223	20,223	-25.7%
Delphi	13,085	15,717	20.1%
Other museums	90,424	114,359	26.5%
B. Archaeological Sites (D+F)	473,260	484,729	2.4%
Epidavros ⁽¹⁾	27,773	28,316	2.0%
The Acropolis of Mycenae & Atreus' Treasure	27,752	32,085	15.6%
The Acropolis of Athens	128,911	125,278	-2.8%
Sounio	15,918	17,691	11.1%
The Acropolis of Lindos	3,313	1,721	-48.1%
Royal Tombs of Vergina	14,414	17,591	22.0%
Ancient Olympia	19,079	18,442	-3.3%
Knossos (Crete)	14,467	7,646	-47.1%
Phaistos (Crete)	1,222	897	-26.6%
Ancient Korinthos ⁽¹⁾	9,336	8,095	-13.3%
Mystras ⁽¹⁾	6,459	5,801	-10.2%
Delphi	26,606	25,161	-5.4%
Other archaeological sites	178,010	196,005	10.1%
II. VISITORS WHO PAID TICKET			
	2016	2017	Change 2017/2016
Total number of visitors who paid ticket (C+D)	301,144	286,886	-4.7%
C. Museums	106,503	108,388	1.8%
D. Archaeological sites	194,641	178,498	-8.3%
III. VISITORS WITH FREE ADMISSION TICKETS			
	2016	2017	Change 2017/2016
Total number of visitors with free admission ticket (E+F)	487,496	549,069	12.6%
E. Museums	208,877	242,838	16.3%
F. Archaeological sites	278,619	306,231	9.9%
IV. RECEIPTS (euros)			
	2016	2017	Change 2017/2016
Total Receipts (G+H)	1,977,220.00	1,864,552.00	-5.7%
G. Museums	502,274.00	445,127.00	-11.4%
H. Archaeological sites	1,474,946.00	1,419,425.00	-3.8%

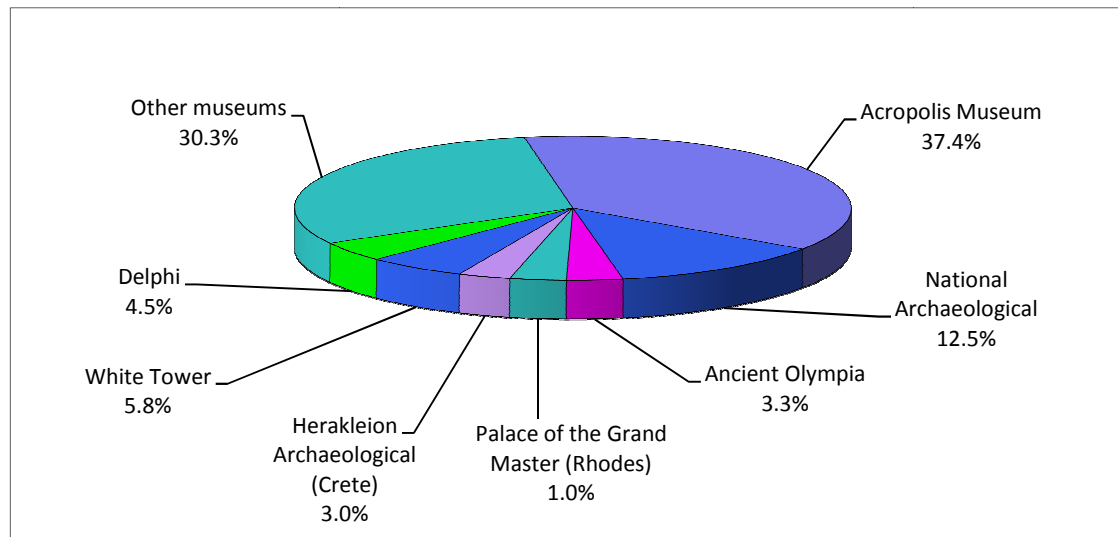
⁽¹⁾ Flat rate ticket, valid both for the museum and the archaeological site,

The following graphs depict the evolution of the receipts (Graph 2), as well as the number of visitors by Museum and Archaeological Site (Graphs 3 and 4, respectively),

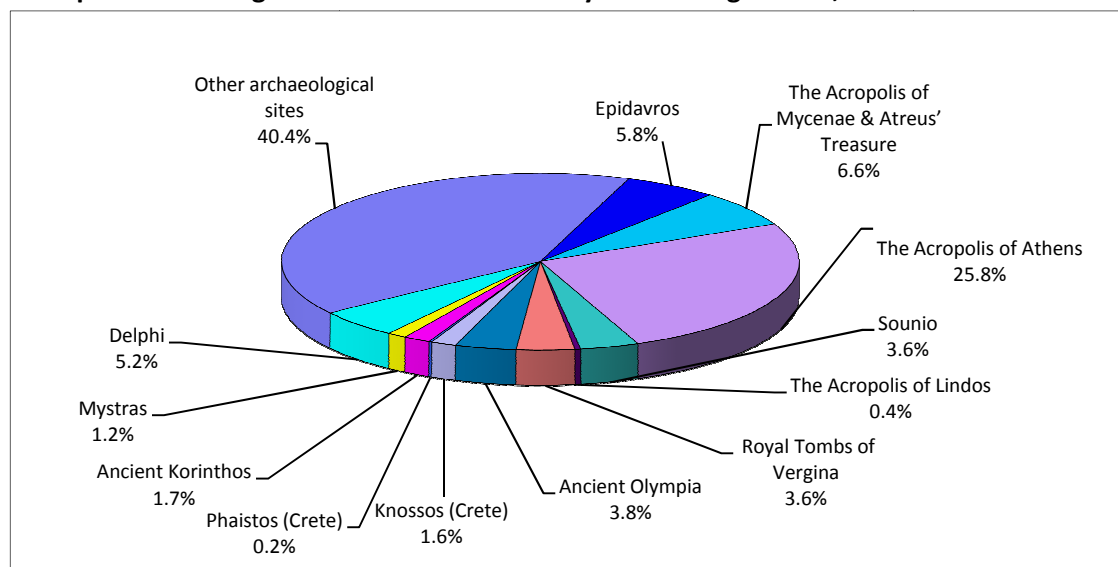
Graph 2: Receipts from Museums and Archaeological Sites (Jan 2012 - Mar 2017)



Graph 3: Percentage distribution of Visitors by Museum, March 2017



Graph 4: Percentage distribution of Visitors by Archaeological site, March 2017



**TABLE 2: VISITORS OF MUSEUMS AND ARCHAEOLOGICAL SITES - TOTAL RECEIPTS
(2015, 2016 AND JANUARY-MARCH 2016 & 2017)**

I. VISITORS					
Museums and Archaeological sites	2015	2016	JANUARY-MARCH		change
			2016	2017	2017/2016
Total number of visitors (A+B)	14,725,895	14,040,961	1,505,998	1,656,953	10.0%
A. Museums (C+E)	4,405,842	4,476,288	650,768	746,195	14.7%
Acropolis Museum	1,510,615	1,406,096	239,837	261,206	8.9%
National Archaeological	476,754	447,093	75,365	93,593	24.2%
Ancient Olympia	135,972	124,136	16,611	15,958	-3.9%
Palace of the Grand Master (Rhodes)	251,091	237,361	8,018	7,216	-10.0%
Herakleion Archaeological (Crete)	201,657	355,237	26,903	15,536	-42.3%
White Tower	273,659	290,192	62,451	51,682	-17.2%
Delphi	205,369	166,091	25,396	28,275	11.3%
Other museums	1,350,725	1,450,082	196,187	272,729	39.0%
B. Archaeological Sites (D+F)	10,320,053	9,564,673	855,230	910,758	6.5%
Epidavros ⁽¹⁾	443,565	375,437	42,099	43,362	3.0%
The Acropolis of Mycenae & Atreus' Treasure	402,565	342,854	42,134	48,229	14.5%
The Acropolis of Athens	2,043,868	1,807,580	247,919	239,360	-3.5%
Sounio	236,285	222,800	33,417	35,413	6.0%
The Acropolis of Lindos	580,875	421,070	5,035	2,904	-42.3%
Royal Tombs of Vergina	211,132	186,627	28,903	29,611	2.4%
Ancient Olympia	439,836	423,424	29,343	27,633	-5.8%
Knossos (Crete)	632,288	611,455	23,112	14,112	-38.9%
Phaistos (Crete)	94,689	77,071	1,939	1,651	-14.9%
Ancient Korinthos ⁽¹⁾	141,490	153,307	16,077	15,306	-4.8%
Mystras ⁽¹⁾	117,010	114,293	10,317	9,068	-12.1%
Delphi	319,754	290,705	44,318	43,828	-1.1%
Other archaeological sites	4,656,696	4,538,050	330,617	400,281	21.1%
II. VISITORS WHO PAID TICKET					
	2015	2016	JANUARY-MARCH		change
			2016	2017	2017/2016
Total number of visitors who paid ticket (C+D)	10,544,249	8,749,957	604,368	704,541	16.6%
C. Museums	2,867,641	2,406,665	237,491	293,062	23.4%
D. Archaeological sites	7,676,608	6,343,292	366,877	411,479	12.2%
III. VISITORS WITH FREE ADMISSION TICKETS					
	2015	2016	JANUARY-MARCH		change
			2016	2017	2017/2016
Total number of visitors with free admission ticket (E+F)	4,181,646	5,291,004	901,630	952,412	5.6%
E. Museums	1,538,201	2,069,623	413,277	453,133	9.6%
F. Archaeological sites	2,643,445	3,221,381	488,353	499,279	2.2%
IV. RECEIPTS (euros)					
	2015	2016	JANUARY-MARCH		change
			2016	2017	2017/2016
Total Receipts (G+H)	56,224,962,00	86,647,638,00	3,923,941,00	4,531,061,00	15.5%
G. Museums	12,385,213.00	13,448,464.00	1,119,183.00	1,242,253.00	11.0%
H. Archaeological sites	43,839,749.00	73,199,174.00	2,804,758.00	3,288,808.00	17.3%

⁽¹⁾ Flat rate ticket, valid both for the museum and the archaeological site,

EXPLANATORY NOTES

Survey on Museums and Archaeological Sites Attendance	The Survey on Museums and Archaeological Sites Attendance has been producing results since 1970, The survey collects data from the Archaeological Receipts Fund (ARF) of the Ministry of Culture and Sports concerning the number of visitors and the receipts from the tickets sold in the Museums and Archaeological sites of the country. The corresponding data for the Acropolis Museum are available from December 2009 onwards.
Legal Framework	The survey is conducted since 1970 on a regular basis and it produces results on a monthly and yearly basis, in compliance with the Joint Ministerial Decision 15189/B379/73.
Reference Period	01/03/2017 to 31/03/2017.
Methodology and Definitions	The Survey is conducted on a monthly basis from data collected from the Archaeological Receipts Fund (ARF) of the Ministry of Culture and Sports concerning on the number of visitors and the receipts from the tickets sold in the Museums and Archaeological sites of the country, ELSTAT tabulates the data on Museums and the Archaeological sites for the whole of the Country, by month and by year.

Information on ticket payment

- From January 2002 onwards, the number of Museums' visitors includes both the visitors who have bought a ticket and the visitors with free admission ticket, From 16-06-1996 onwards, the Museums and the Archaeological sites all over Greece have a paid admission for all the visitors, Greeks and foreigners, all over the year, except in the following days, which are free admission days:
- National Holidays (25th of March and 28th of October)
- The first Sunday every month during the five month period from 1 November to 31 March
- The 6th of March (in memory of Melina Merkouri)
- The 18th of April (International Monuments Day)
- The 18th of May (International Museums Day)
- The 5th of June (International Environment Day)
- The last weekend of September, annually (European Heritage Days)

Free admission tickets

The admission to Museums and Archaeological site is free for:

- Young people from EU-countries aged under 18 years, with current identification card to confirm their age,
- Students of Universities and of Higher and Technical Education Institutions or equivalent institutions of EU-countries, as well as of Tour Guide Training Institutes, with valid student identification card or International Student Identity Card (ISIC)
- Employees of the Hellenic Ministry of Culture, with valid professional identity card
- ICOM and ICOMOS cardholders
- Tour Guides with their current working identification card from the Ministry of Development
- Teachers accompanying pupils and students on primary, secondary and tertiary education institution tours
- Journalists with valid journalists' identification card
- Members of Associations and Societies of Friends of Museums and Archaeological Sites
- Official guests of the Greek Government, after relevant approval
- Escorts of blind persons and persons with disabilities
- Free admission cardholders
- Holders of the Culture Card

Number of flat rate tickets

From April 1999 onwards, in some museums and the nearby archaeological sites, in addition to the ordinary ticket, a new "flat rate ticket" was established, which is valid for both the museum and the nearby archaeological site. The total number of these flat rate tickets for **March 2017** was **9,832**.

References	More information on the Survey on Museums and Archaeological Sites Attendance and detailed time series are available on: http://www.statistics.gr/en/statistics/-/publication/SCI21/-
-------------------	--