



PRESS RELEASE

INDEX OF PERSONS EMPLOYED IN RETAIL TRADE: 3rd quarter 2015

The Hellenic Statistical Authority announces the Index of Persons Employed in Retail Trade, with base year 2010=100.0, for the 3rd quarter 2015 as follows:

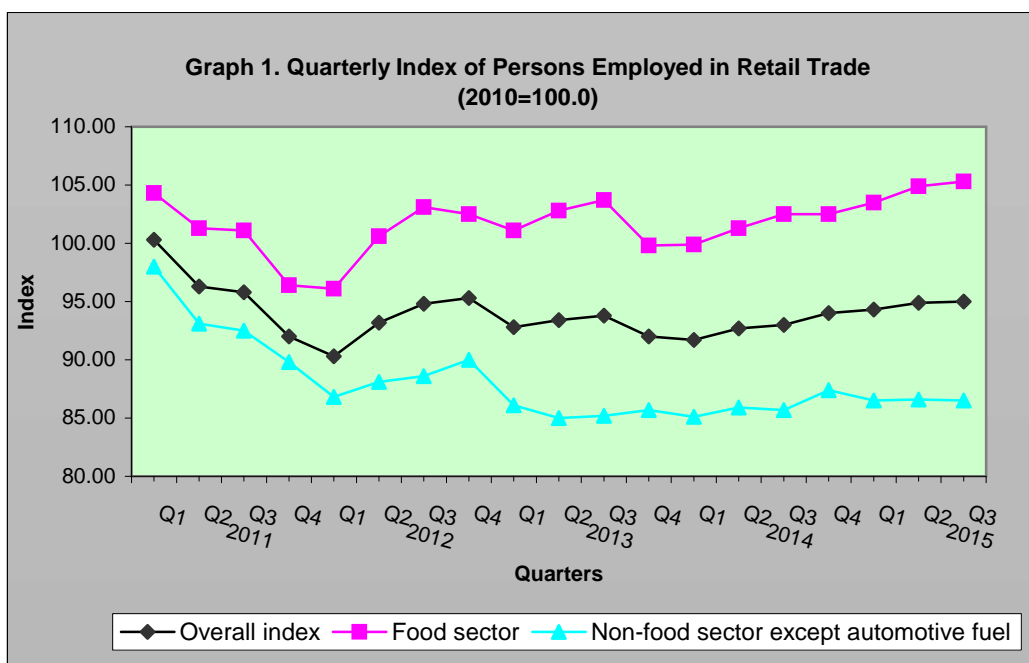
- The Index of Persons Employed in Retail Trade in the 3rd quarter 2015, compared with the corresponding index of the 3rd quarter 2014 increased by 2.2%. More specifically, in the food sector, the index increased by 2.7%, while in the non-food sector except automotive fuel, increased by 0.9% (Table 1).
- The Index of Persons Employed in Retail Trade in the 3rd quarter 2015, compared with the corresponding index of the 2nd quarter 2015 increased by 0.1%. More specifically, in the food sector, the index increased by 0.4%, while in the non-food sector except automotive fuel decreased by 0.1% (Table 2).
- The seasonally adjusted General Index (after eliminating the seasonal effects e.g., the beginning of the school year, holidays, tourist period etc) of Persons Employed in Retail Trade increased by 0.3% in the 3rd quarter 2015, compared to the 2nd quarter 2015. More specifically, in the food sector, the seasonally adjusted index decreased by 0.2%, while in the non-food sector except automotive fuel, increased by 0.2% (Table 3).

It should be noted that the Index of Persons Employed in Retail Trade in the 2nd quarter 2015 which had been announced in the previous press release was revised due to new available information in the food sector from 104.7 to 104.9 and for the non-food sector except automotive fuel from 86.8 to 86.8. Therefore, their annual changes have been revised from 3.4% to 3.6% and from 1.0% to 0.8%. The general index remained unchanged.

Information:

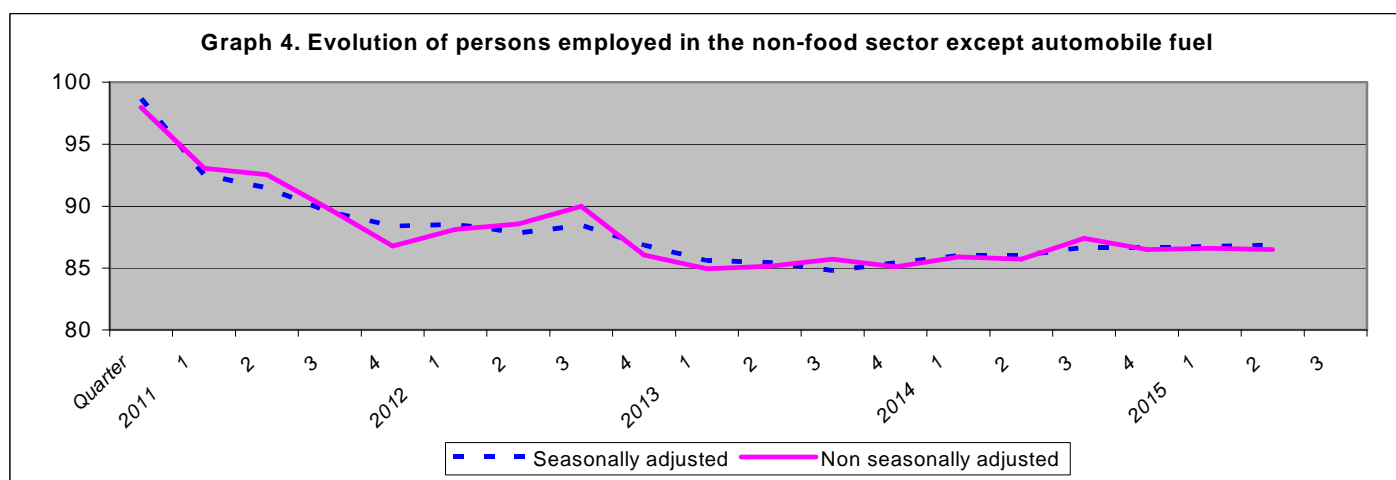
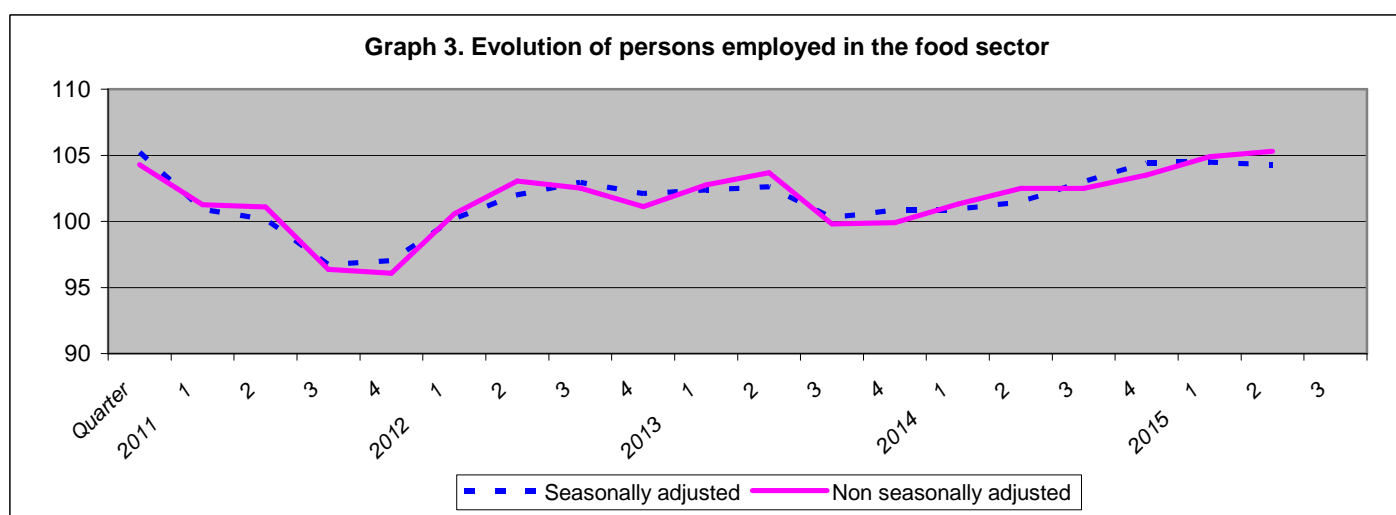
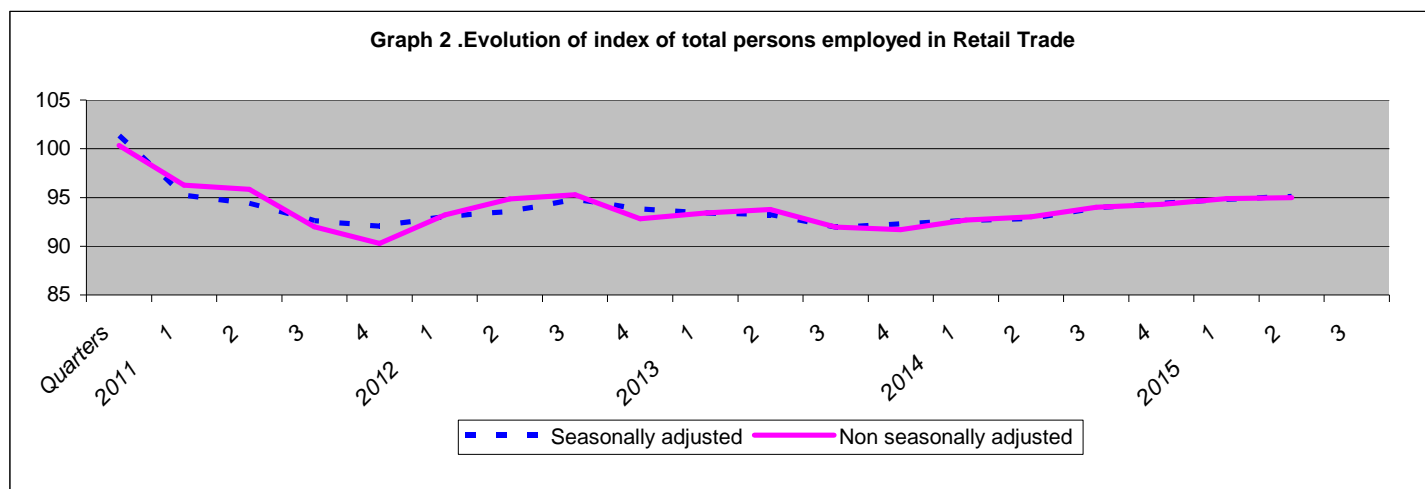
**Economic and Short-Term
Indicators Division**
Retail Sales Value Index
Section
Fax: 0030 2131352729
e-mail : ret.sal@statistics.gr

I. Nikolaidis
Tel: 00302131352127
Aik.Mertika
Tel: 00302131352717
a.mertika@statistics.gr



Time series of the index is available on the ELSTAT website:
<http://www.statistics.gr/en/statistics/-/publication/DKT12/>

Graphs 2, 3 and 4 depict the evolution of seasonally and non seasonally adjusted indices for the total persons employed in Retail Trade, in the food sector and in the non-food sector except automotive fuel.



It should be noted that the whole series with seasonally adjusted indices are *recalculated* every time a *new* observation is added in time series. Therefore, the seasonally adjusted data differ from the published data of the previous Press Release.

Table 1. Annual rates of change of the Index of Persons Employed in Retail Trade

Base year: 2010=100.0

Year/Quarter		Overall Index		Overall Index (excluding the persons employed in the automotive fuel sector)		Index of persons employed in the food sector		Index of persons employed in the non- food sector except automotive fuel	
		Index	Annual rate (%)	Index	Annual rate (%)	Index	Annual rate (%)	Index	Annual rate (%)
2011	Q1	100.3	-2.8	101.1	-2.0	104.3	3.0	98.0	-6.8
	Q2	96.3	-5.0	97.2	-4.2	101.3	0.1	93.1	-8.4
	Q3	95.8	-3.8	96.8	-2.5	101.1	0.9	92.5	-6.0
	Q4	92.0	-3.9	93.1	-3.2	96.4	-1.1	89.8	-5.4
	<i>Average</i>	<i>96.1</i>	<i>-3.9</i>	<i>97.1</i>	<i>-2.9</i>	<i>100.7</i>	<i>0.7</i>	<i>93.3</i>	<i>-6.7</i>
2012	Q1	90.3	-10.0	91.5	-9.6	96.1	-7.9	86.8	-11.4
	Q2	93.2	-3.2	94.4	-2.8	100.6	-0.7	88.1	-5.3
	Q3	94.8	-1.0	95.9	-1.0	103.1	2.0	88.6	-4.3
	Q4	95.3	3.6	96.3	3.5	102.5	6.4	90.0	0.3
	<i>Average</i>	<i>93.4</i>	<i>-2.8</i>	<i>94.5</i>	<i>-2.6</i>	<i>100.6</i>	<i>-0.2</i>	<i>88.4</i>	<i>-5.3</i>
2013	Q1	92.8	2.8	93.7	2.4	101.1	5.2	86.1	-0.8
	Q2	93.4	0.2	94.0	-0.4	102.8	2.2	85.0	-3.6
	Q3	93.8	-1.1	94.6	-1.3	103.7	0.6	85.2	-3.8
	Q4	92.0	-3.5	92.8	-3.6	99.8	-2.6	85.7	-4.8
	<i>Average</i>	<i>93.0</i>	<i>-0.4</i>	<i>93.8</i>	<i>-0.8</i>	<i>101.8</i>	<i>1.3</i>	<i>85.5</i>	<i>-3.3</i>
2014	Q1	91.7	-1.2	92.6	-1.2	99.9	-1.2	85.1	-1.1
	Q2	92.7	-0.8	93.6	-0.4	101.3	-1.4	85.9	1.1
	Q3	93.0	-0.9	94.0	-0.6	102.5	-1.2	85.7	0.6
	Q4	94.0	2.2	95.0	2.4	102.5	2.7	87.4	2.0
	<i>Average</i>	<i>92.8</i>	<i>-0.2</i>	<i>93.8</i>	<i>0.0</i>	<i>101.6</i>	<i>-0.2</i>	<i>86.0</i>	<i>0.6</i>
2015	Q1	94.3	2.8	94.9	2.5	103.5	3.6	86.5	1.6
	Q2	94.9	2.4	95.6	2.1	104.9	3.6	86.6	0.8
	Q3	95.0	2.2	95.7	1.8	105.3	2.7	86.5	0.9

Table 2. Quarterly rates of change of the Index of Persons Employed in Retail Trade

Base year: 2010=100.0

Year/Quarter		Overall Index		Overall Index (excluding the persons employed in the automotive fuel sector)		Index of persons employed in the food sector		Index of persons employed in the non-food sector except automotive fuel	
2011	Q1	100.3	4.8	101.1	5.2	104.3	7.1	98.0	3.3
	Q2	96.3	-4.1	97.2	-3.9	101.3	-2.9	93.1	-5.0
	Q3	95.8	-0.4	96.8	-0.4	101.1	-0.2	92.5	-0.6
	Q4	92.0	-4.0	93.1	-3.9	96.4	-4.7	89.8	-3.0
	<i>Average</i>	<i>96.1</i>		<i>97.1</i>		<i>100.7</i>		<i>93.3</i>	
2012	Q1	90.3	-1.9	91.5	-1.7	96.1	-0.3	86.8	-3.3
	Q2	93.2	3.3	94.4	3.2	100.6	4.7	88.1	1.5
	Q3	94.8	1.7	95.9	1.6	103.1	2.5	88.6	0.5
	Q4	95.3	0.5	96.3	0.4	102.5	-0.5	90.0	1.6
	<i>Average</i>	<i>93.4</i>		<i>94.5</i>		<i>100.6</i>		<i>88.4</i>	
2013	Q1	92.8	-2.6	93.7	-2.7	101.1	-1.4	86.1	-4.4
	Q2	93.4	0.6	94.0	0.3	102.8	1.6	85.0	-1.3
	Q3	93.8	0.4	94.6	0.6	103.7	0.9	85.2	0.3
	Q4	92.0	-1.9	92.8	-1.9	99.8	-3.7	85.7	0.6
	<i>Average</i>	<i>93.0</i>		<i>93.8</i>		<i>101.8</i>		<i>85.5</i>	
2014	Q1	91.7	-0.3	92.6	-0.3	99.9	0.1	85.1	-0.7
	Q2	92.7	1.1	93.6	1.1	101.3	1.4	85.9	0.9
	Q3	93.0	0.3	94.0	0.4	102.5	1.2	85.7	-0.2
	Q4	94.0	1.1	95.0	1.1	102.5	0.0	87.4	2.0
	<i>Average</i>	<i>92.8</i>		<i>93.8</i>		<i>101.6</i>		<i>86.0</i>	
2015	Q1	94.3	0.3	94.9	- 0.1	103.5	1.0	86.5	-1.0
	Q2	94.9	0.6	95.6	0.7	104.9	1.4	86.6	0.1
	Q3	95.0	0.1	95.7	0.1	105.3	0.4	86.5	-0.1

Table 3. Quarterly rates of change of the Seasonally Adjusted Index of Persons Employed in Retail Trade

Base year: 2010=100.0

Year/Quarter		Overall Index		Overall Index (excluding the persons employed in the automotive fuel sector)		Index of persons employed in the food sector		Index of persons employed in the non- food sector except automotive fuel	
2011	Q1	101.3	4.7	102.1	5.1	105.2	7.7	98.7	3.1
	Q2	95.3	-6.0	96.0	-5.9	100.9	-4.1	92.5	-6.3
	Q3	94.4	-0.9	95.4	-0.7	100.1	-0.7	91.5	-1.1
	Q4	92.6	-1.9	93.7	-1.8	96.7	-3.4	89.5	-2.1
	<i>Average</i>	95.9		96.8		100.8		93.0	
2012	Q1	92.1	-0.6	93.3	-0.5	97.0	0.3	88.4	-1.3
	Q2	93.1	1.1	94.2	1.0	100.2	3.3	88.5	0.2
	Q3	93.6	0.5	94.6	0.4	102.0	1.8	87.9	-0.7
	Q4	94.8	1.4	95.8	1.3	103.0	0.9	88.4	0.7
	<i>Average</i>	93.4		94.5		100.5		88.3	
2013	Q1	93.8	-1.0	94.7	-1.1	102.1	-0.8	86.9	-1.8
	Q2	93.4	-0.5	94.1	-0.7	102.4	0.3	85.6	-1.5
	Q3	93.3	-0.2	94.1	-0.1	102.6	0.2	85.5	-0.2
	Q4	92.0	-1.4	92.8	-1.4	100.3	-2.3	84.8	-0.8
	<i>Average</i>	93.1		93.9		101.8		85.7	
2014	Q1	92.3	0.3	93.2	0.5	100.8	0.5	85.4	0.7
	Q2	92.6	0.4	93.6	0.4	100.9	0.1	86.0	0.7
	Q3	92.9	0.2	93.8	0.2	101.5	0.6	86.0	0.0
	Q4	93.9	1.2	94.8	1.1	103.0	1.5	86.7	0.8
	<i>Average</i>	92.9		93.9		101.6		86.0	
2015	Q1	94.4	0.5	95.1	0.3	104.4	1.4	86.7	0.0
	Q2	94.8	0.5	95.5	0.5	104.5	0.1	86.7	0.1
	Q3	95.1	0.3	95.8	0.3	104.3	-0.2	86.9	0.2

METHODOLOGICAL NOTES

Generally	The Index of Persons Employed in Retail Trade is a quarterly index that was first compiled in 2004 with 2000=100.0 as the base year and backdated data from the 1st quarter of 2000.
Purpose of the index – definitions	<p>The purpose of the Retail Trade Turnover Index is to measure the performance of the goods and services market.</p> <p>The compilation of the index includes the number of persons employed in the enterprise irrespective of their status (owners, partners and their family members) and the nature of their work (managers, sales persons and auxiliary staff) and irrespective of whether they work on a provisional or seasonal basis, full time or part time, with or without remuneration.</p>
Legal basis	The compilation of the Index of Persons Employed in Retail Trade is governed by Council Regulation (EEC) No.1165/98 "concerning short-term statistics" and by the Regulation No.1893/2006 of the European Parliament and of the Council for the implementation of the statistical classification NACE Rev.2 and by Regulation No 329/2009.
Reference period	Quarter.
Base year	2010=100.0.
Revision	Pursuant to the provisions of Council Regulation No 1165/98 concerning short-term statistics, the index in question is updated every five (5) years in years ending in 0 or 5.
Statistical classification	The EU (Eurostat) NACE Rev.2 statistical classification of economic activities was used, in conformity with Regulation (EC) 1893/2006 of the European Parliament and the Council.
Geographical coverage	The Index covers the whole of the country, with data from 58 Regional Units
Coverage of economic activities	The index covers division 47 of NACE Rev 2 statistical classification of economic activities of the European Parliament and the Council.
Statistical survey	For the compilation of the revised Index of Persons Employed in Retail Trade (2010=100.0) a sub-sample was used, which was obtained from the existing sample of observation units from the Turnover Index in Retail Trade survey. More specifically, out of the 1607 enterprises included in the sample of the survey for the Turnover Index in Retail Trade (2010=100.0), 754 enterprises were selected covering all the strata of the above survey, which resulted by crossing of 11 categories of aggregated economic classes and size classes of enterprises.
Calculating the indices	The Index of Persons Employed in Retail Trade is calculated as a chain index.
Seasonal adjustment	Seasonal adjustment is the procedure followed to remove the impact of seasonality on the time series in order to improve the comparability over time. The method used is the TRAMO-SEAT method with the use of JDemetra+ 2.0.0. The whole series with seasonally adjusted indices is <i>recalculated</i> every time a <i>new</i> observation is added in time series
Compiled index series	The time series of this index are compiled from 1 st quarter 2000 as follows: 1) Overall Index, 2) Overall Index (excluding the persons employed in the automotive fuel sector), 3) Index of persons employed in the food sector and 4) Index of persons employed in the non-food sector except automotive fuel.
Publication of data	The time series of the Index of Persons Employed in Retail Trade (2010=100.0) have being published since 2000.
References	More information on the methodology concerning the compilation and calculation of the index and for the time series is available on the ELSTAT website: http://www.statistics.gr/en/home