



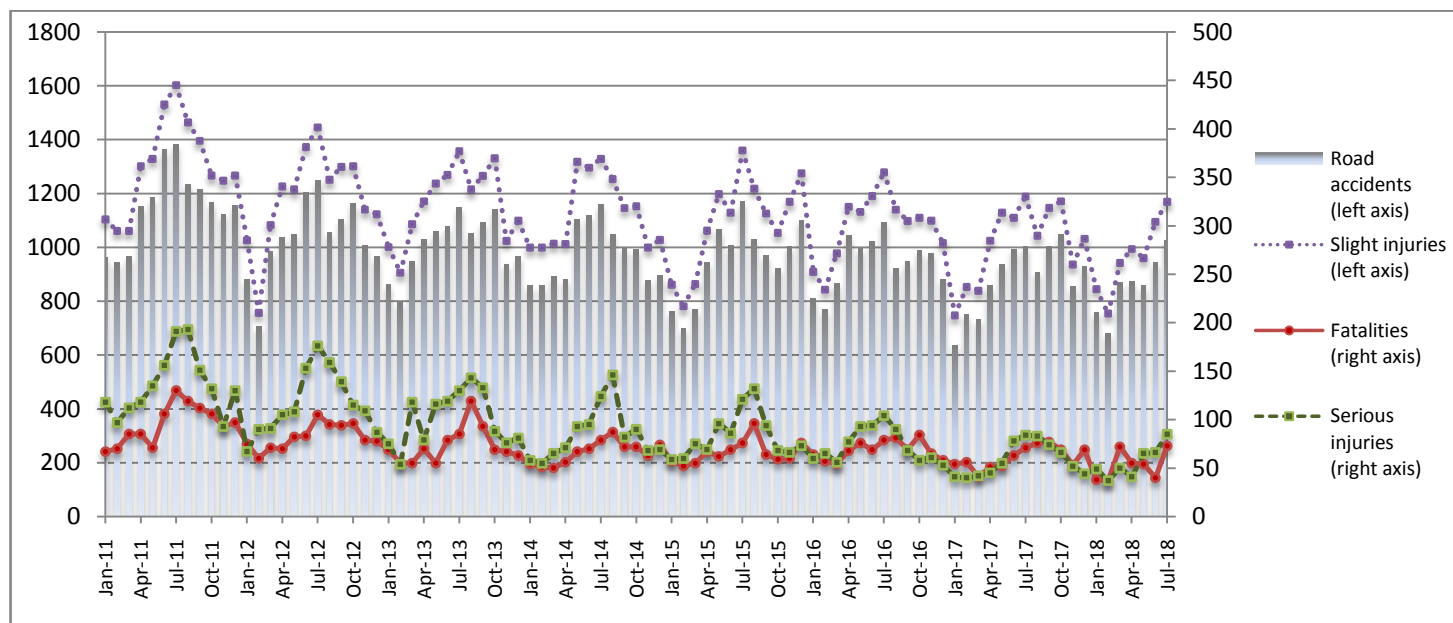
PRESS RELEASE

ROAD ACCIDENTS: July 2018

The Hellenic Statistical Authority (ELSTAT) announces provisional¹ data on Road Accidents for July 2018. In particular, the road traffic accidents which occurred in Greece, resulting in death or injury, increased by 2.5% in comparison with the corresponding month of 2017 (1,027 road accidents in July 2018, against 1,002 road accidents in July 2017).

The casualties of the injury-causing accidents that occurred in July 2018 were as follows: 73 deaths, 85 serious injuries and 1,169 slight injuries. In contrast, in July 2017 the corresponding figures were: 71 deaths, 84 serious injuries and 1,189 slight injuries. Therefore, road accident casualties in July 2018 increased by 2.8% for deaths, increased by 1.2% for serious injuries and decreased by 1.7% for slight injuries.

**Graph 1: Road traffic accidents and casualties,
January 2011 - July 2018**



Provisional data: Sep 17 – Jul 18

Information:

Social Statistics Division
Justice and Public Order Statistics Section
D. Athanasopoulou
Tel: +30 213 1352767
Fax : +30 213 1352764
e-mail: d.athanasopoulou@statistics.gr

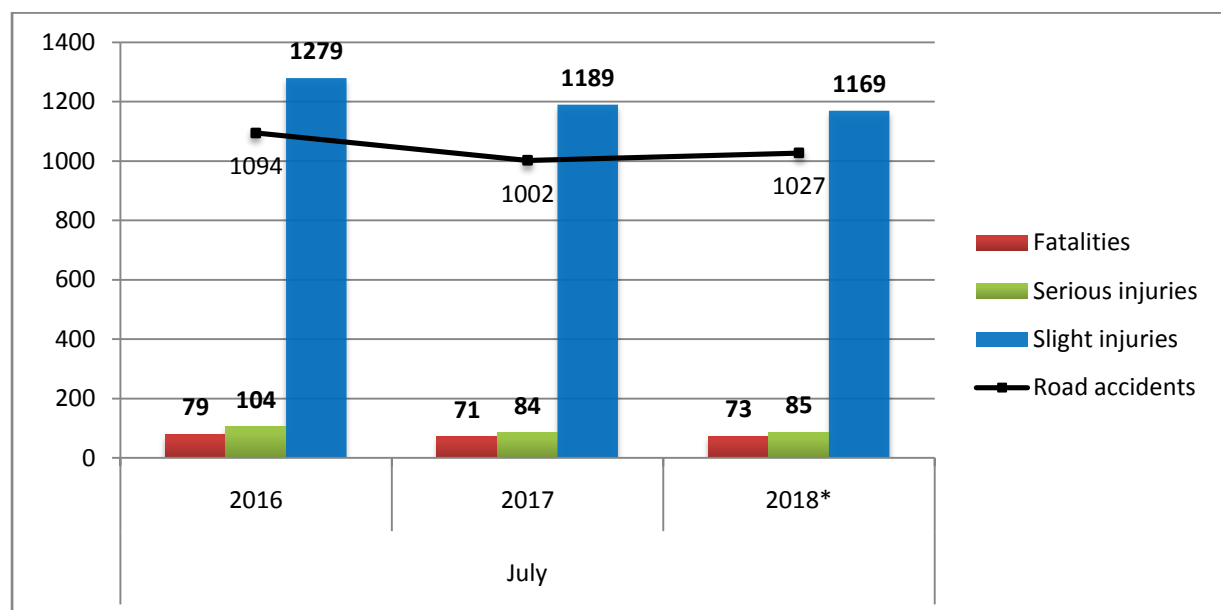
¹ Data for the reference year are provisional until the finalisation of the annual data, which become final 10 months after the end of the reference year. During these 10 months the provisional data are updated on the basis of the data of the Road Accident Forms which are transmitted to ELSTAT by Police Authorities.

Table 1: Road traffic accidents and casualties, July 2016-2018*

	July				
	2016	2017	2017/2016 (%)	2018*	2018*/2017 (%)
Road accidents	1,094	1,002	-8.4%	1,027	2.5%
Fatalities	79	71	-10.1%	73	2.8%
Total injuries	1,383	1,273	-8.0%	1,254	-1.5%
Serious injuries	104	84	-19.2%	85	1.2%
Slight injuries	1,279	1,189	-7.0%	1,169	-1.7%

* Provisional data

Graph 2: Road traffic accidents and casualties, July 2016-2018*



* Provisional data

Table 2: Road traffic accidents and casualties, by region and department, July 2017 – 2018*

Region and Department	Road accidents			Fatalities			Serious injuries			Slight injuries		
	2017	2018*	%	2017	2018*	%	2017	2018*	%	2017	2018*	%
Greece Total	1,002	1,027	2.5%	71	73	2.8%	84	85	1.2%	1,189	1,169	-1.7%
Anatoliki Macedonia, Thraki (East Macedonia and Thrace)	37	52	40.5%	7	7	0.0%	4	7	75.0%	43	57	32.6%
Drama	3	8	166.7%	1	0		0	1		2	11	
Evros	11	9	-18.2%	2	3		1	1		15	9	
Kavala	8	18	125.0%	1	2		2	1		9	18	
Xanthi	6	4	-33.3%	0	0		0	2		7	5	
Rodopi	9	13	44.4%	3	2		1	2		10	14	
Kentriki Macedonia (Central Macedonia)	171	188	9.9%	6	12	100.0%	8	10	25.0%	209	220	5.3%
Imathia	3	6	100.0%	0	3		0	0		3	3	
Thessaloniki	127	140	10.2%	3	5		2	5		157	161	
Kilkis	3	7	133.3%	0	1		0	1		3	6	
Pella	7	2	-71.4%	1	1		1	0		6	1	
Pieria	3	4	33.3%	0	0		0	1		4	3	
Serres	4	7	75.0%	1	2		0	1		8	13	
Chalkidiki	24	22	-8.3%	1	0		5	2		28	33	
Dytiki Macedonia (West Macedonia)	7	8	14.3%	2	4	100.0%	1	1	0.0%	8	10	25.0%
Grevena	1	2	100.0%	0	1		0	0		1	1	
Kastoria	2	2	0.0%	1	0		0	0		2	3	
Kozani	3	3	0.0%	1	2		0	0		3	6	
Florina	1	1	0.0%	0	1		1	1		2	0	
Ipeiros (Epirus)	16	18	12.5%	2	4	100.0%	4	4	0.0%	16	15	-6.3%
Arta	3	5	66.7%	1	2		1	3		2	2	
Thesprotia	4	5	25.0%	1	0		1	1		2	4	
Ioannina	7	7	0.0%	0	1		1	0		10	8	
Preveza	2	1	-50.0%	0	1		1	0		2	1	
Thessalia (Thessaly)	22	16	-27.3%	5	3	-40.0%	5	5	0.0%	20	13	-35.0%
Karditsa	6	2	-66.7%	3	0		0	0		4	3	
Larissa	7	5	-28.6%	2	2		0	1		6	5	
Magnissia	6	8	33.3%	0	1		4	3		6	5	
Trikala	3	1	-66.7%	0	0		1	1		4	0	
Ionian Nisia (Ionian Islands)	27	19	-29.6%	4	1	-75.0%	7	2	-71.4%	23	25	8.7%
Zakynthos	4	6	50.0%	2	0		2	1		1	8	
Kerkyra	12	7	-41.7%	0	0		3	0		10	8	
Kefallinia	7	2	-71.4%	2	0		2	1		4	2	
Lefkada	4	4	0.0%	0	1		0	0		8	7	

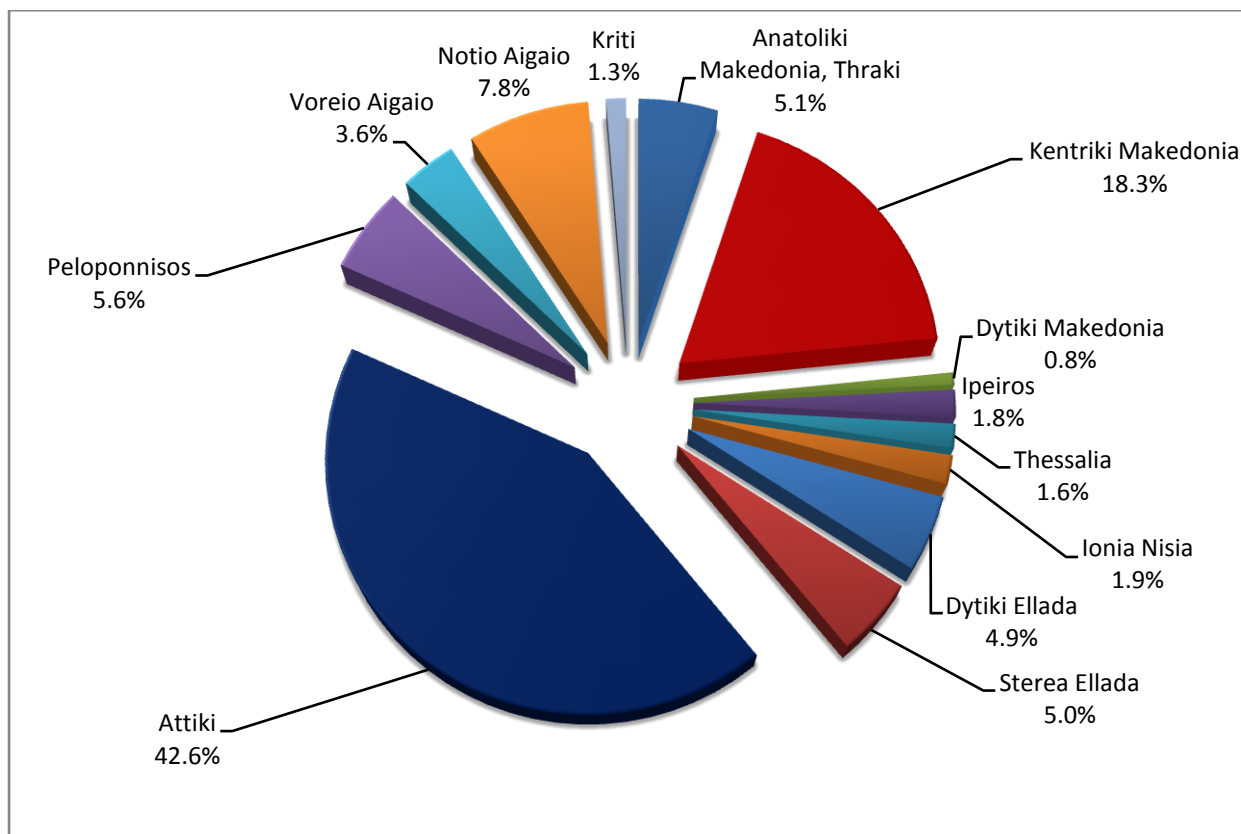
* Provisional data

Table 2: Road traffic accidents and casualties, by region and department, July 2017 – 2018* (Continued)

Region and Department	Road accidents			Fatalities			Serious injuries			Slight injuries		
	2017	2018*	%	2017	2018*	%	2017	2018*	%	2017	2018*	%
Dytiki Ellada (West Greece)	56	50	-10.7%	5	3	-40.0%	5	4	-20.0%	66	52	-21.2%
Etolia & Akarnania	23	16	-30.4%	4	2		1	2		29	18	
Achaia	27	24	-11.1%	1	0		3	1		29	26	
Ilia	6	10	66.7%	0	1		1	1		8	8	
Stereia Ellada	61	51	-16.4%	8	8	0.0%	8	6	-25.0%	84	59	-29.8%
Viotia	15	7	-53.3%	5	1		1	1		15	5	
Evia	29	18	-37.9%	3	2		5	3		43	19	
Evrytania	0	3	-	0	2		0	0		0	3	
Fthiotida	12	16	33.3%	0	2		1	2		14	19	
Fokida	5	7	40.0%	0	1		1	0		12	13	
Attiki (Attica)	437	438	0.2%	12	11	-8.3%	21	28	33.3%	527	509	-3.4%
Peloponnisos (Peloponnese)	62	57	-8.1%	11	3	-72.7%	5	4	-20.0%	72	71	-1.4%
Argolida	8	9	12.5%	1	2		1	0		8	12	
Arkadia	11	10	-9.1%	0	1		0	0		15	14	
Korinthia	21	27	28.6%	5	0		4	4		21	32	
Lakonia	9	3	-66.7%	1	0		0	0		13	3	
Messinia	13	8	-38.5%	4	0		0	0		15	10	
Voreio Aigaio (North Aegean)	19	37	94.7%	3	1	-66.7%	2	0	-100.0%	22	46	109.1%
Lesvos	7	22	214.3%	2	1		1	0		8	26	
Samos	10	12	20.0%	0	0		1	0		12	16	
Chios	2	3	50.0%	1	0		0	0		2	4	
Notio Aigaio (South Aegean)	74	80	8.1%	3	12	300.0%	11	13	18.2%	87	82	-5.7%
Dodekanissos	37	31	-16.2%	1	7		3	6		47	32	
Kyklades	37	49	32.4%	2	5		8	7		40	50	
Kriti (Crete)	13	13	0.0%	3	4	33.3%	3	1	-66.7%	12	10	-16.7%
Iraklio	2	7	250.0%	0	3		1	0		4	5	
Lassithi	5	1	-80.0%	1	0		1	0		3	1	
Rethymno	1	0	-100.0%	0	0		0	0		1	0	
Chania	5	5	0.0%	2	1		1	1		4	4	

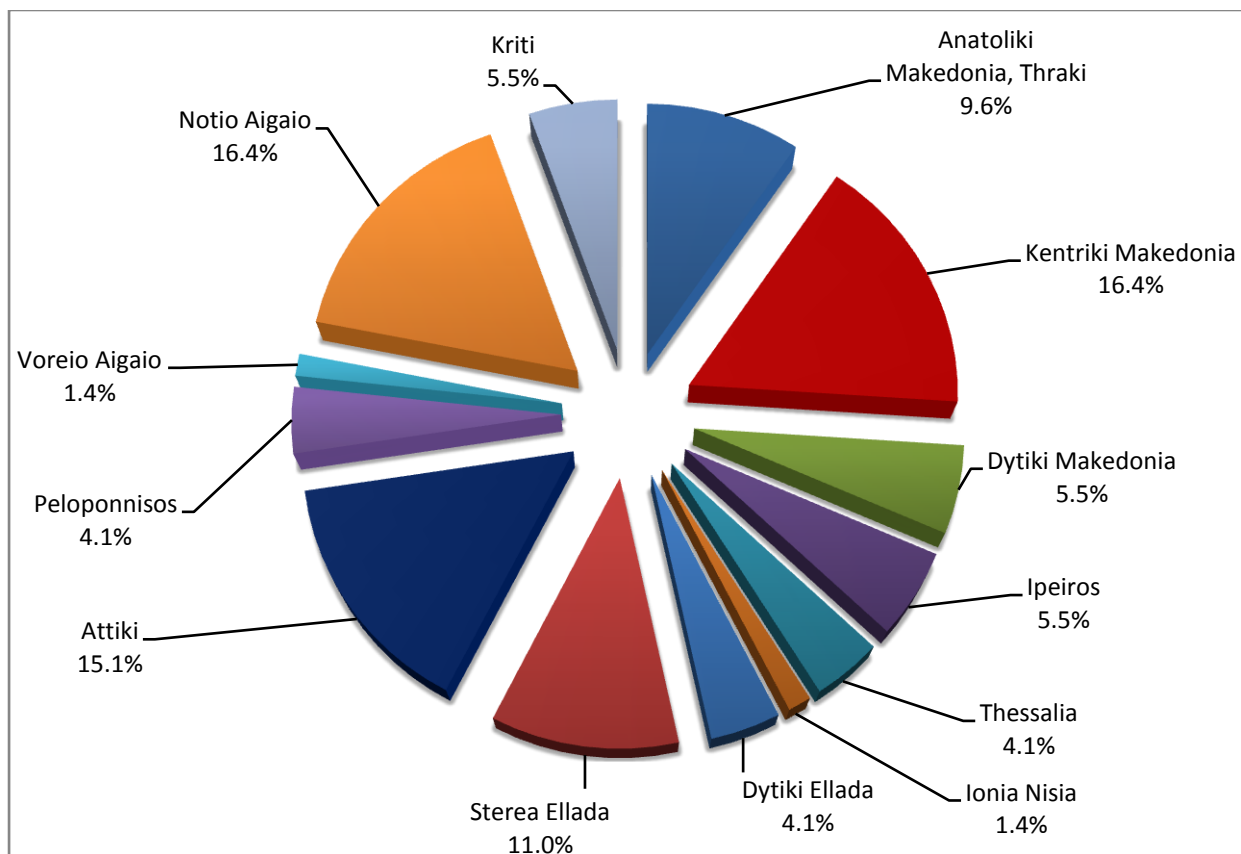
* Provisional data

**Graph 3: Road traffic accidents by region,
July 2018 ***



* Provisional data

**Graph 4: Fatalities by region,
July 2018 ***



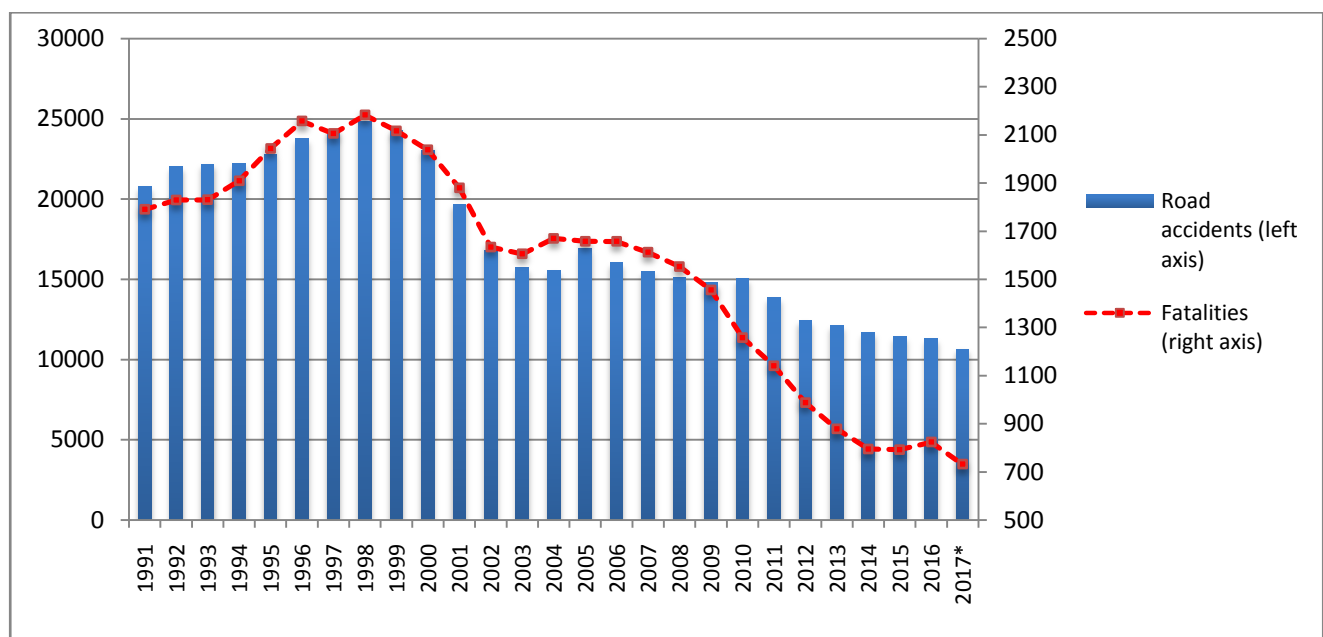
* Provisional data

Table 3: Road traffic accidents and casualties for the period January - July 2016, 2017 and 2018*

	2016		2017		2018 *
	January - July	Total year	January - July	Total year*	January - July
Road Accidents	6,599	11,318	5,905	10,647	6,008
Annual Change (%)			-10.5%	-5.9%	1.7%
Fatalities	467	824	388	732	369
Annual Change (%)			-16.9%	-11.2%	-4.9%
Serious injuries	549	879	385	704	393
Annual Change (%)			-29.9%	-19.9%	2.1%
Slight injuries	7,483	12,946	6,892	12,221	6,759
Annual Change (%)			-7.9%	-5.6%	-1.9%

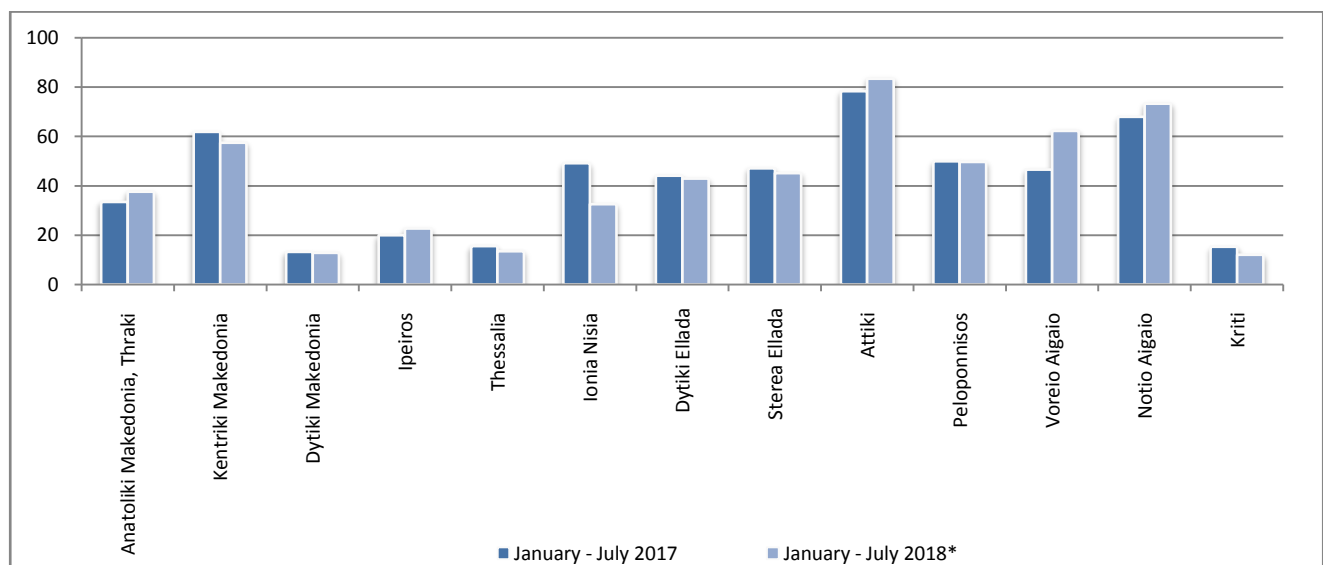
* Provisional data

Graph 5: Total road traffic accidents and fatalities, 1991-2017*



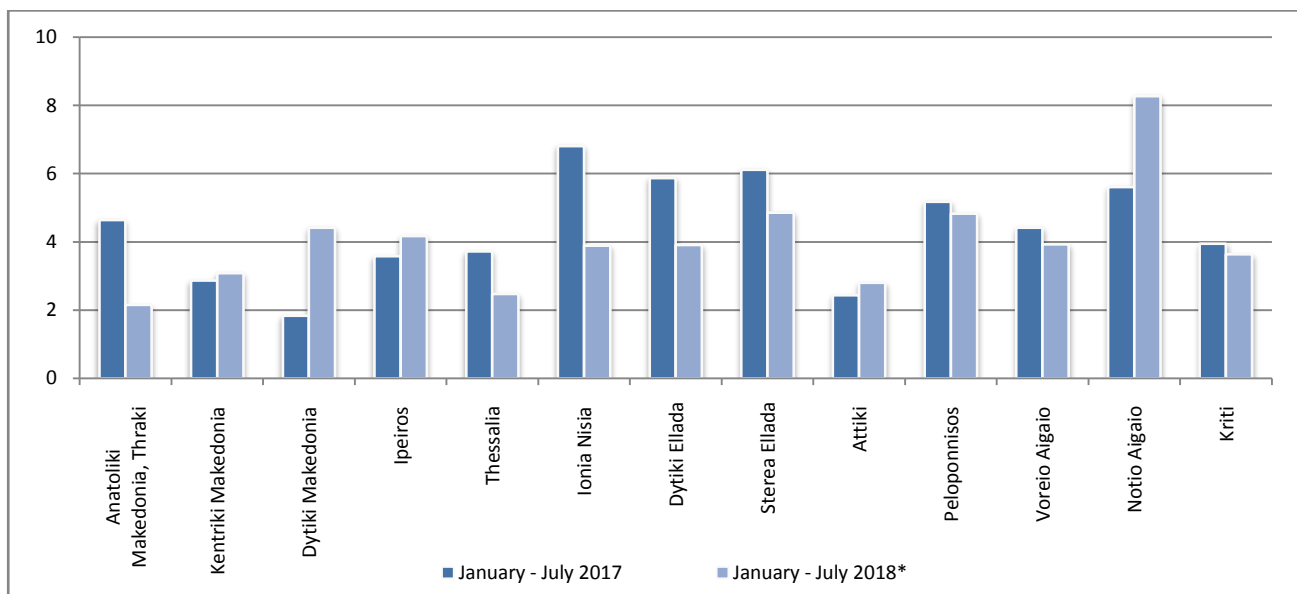
* Provisional data: Sep 17 – Dec 17

Graph 6: Road accidents per 100,000 inhabitants

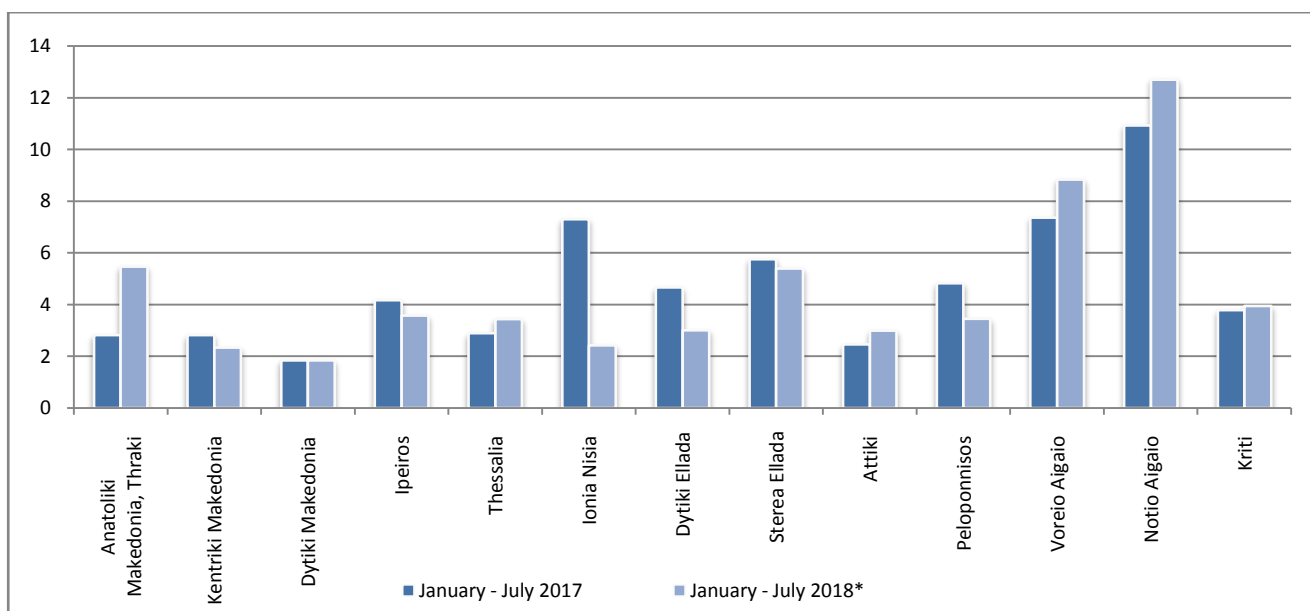


* Provisional data

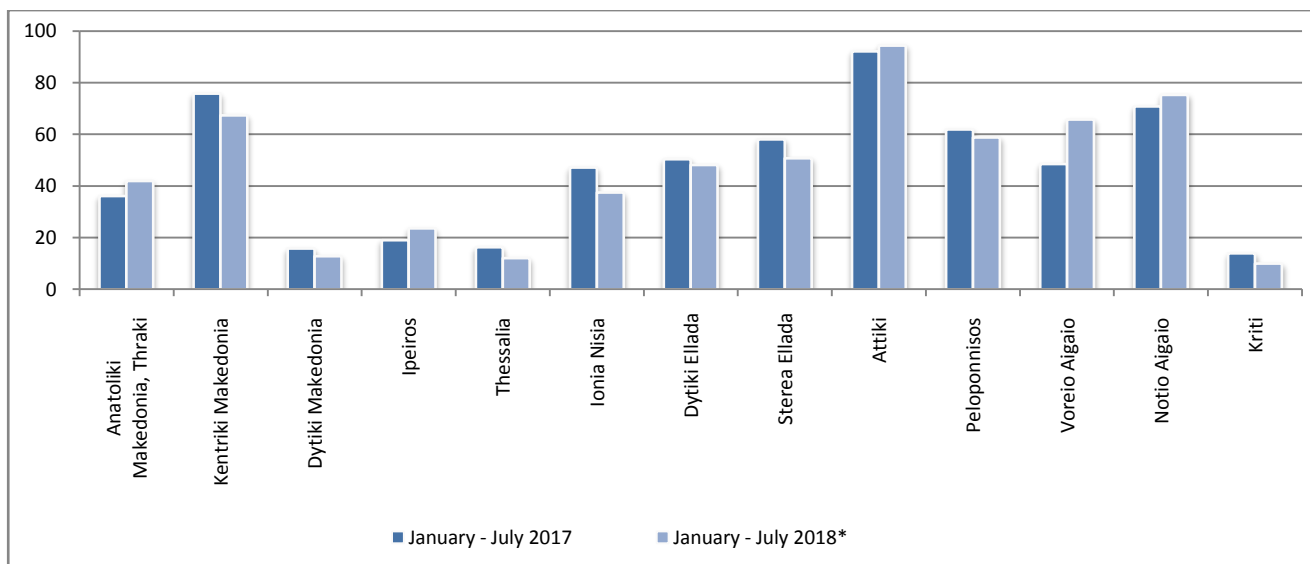
Graph 7: Fatalities per 100,000 inhabitants



Graph 8: Serious injuries per 100,000 inhabitants



Graph 9: Slight injuries per 100,000 inhabitants



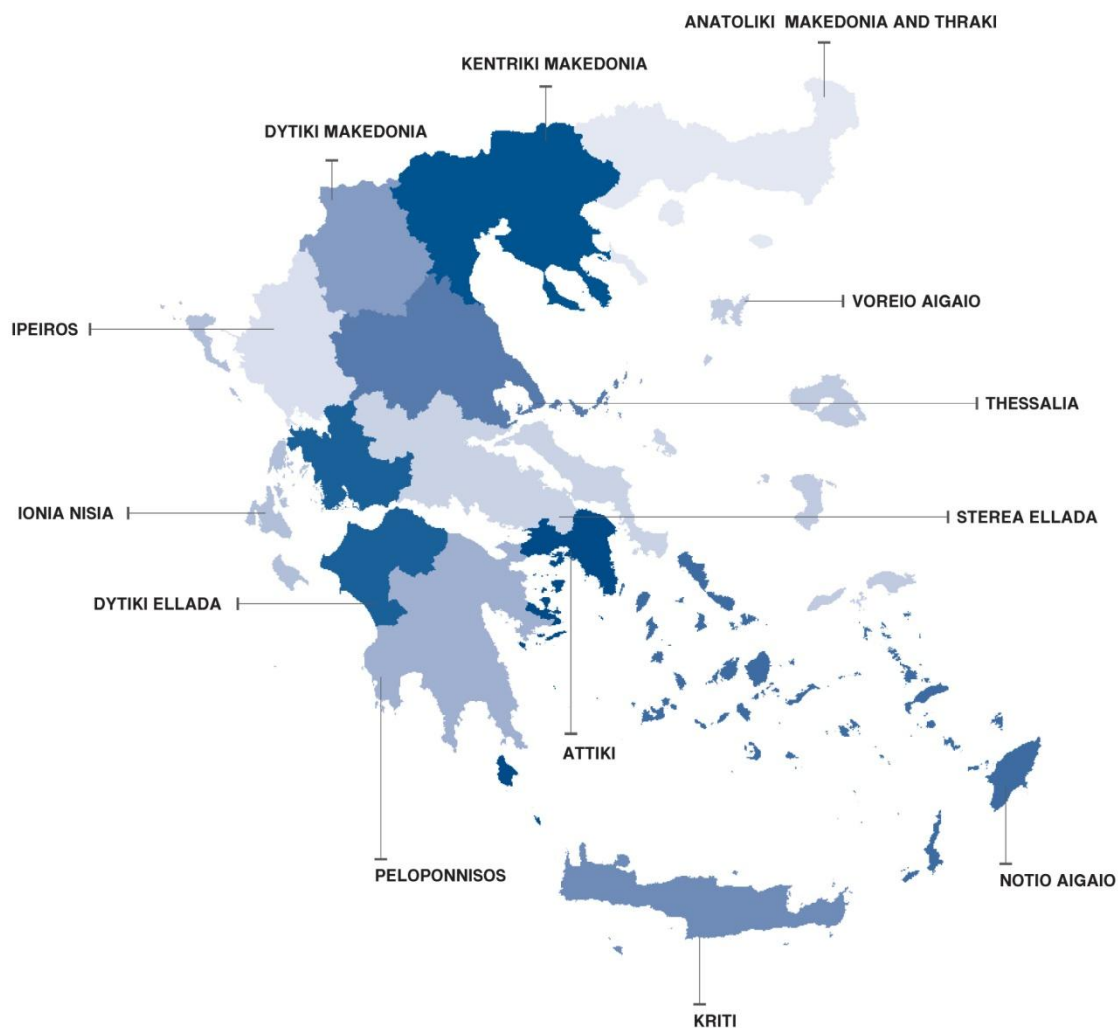
* Provisional data

Explanatory Notes

Survey on Road Accidents The survey on road accidents is conducted on a monthly basis and it records, for each department of Greece and for each month separately, the number of accidents resulting in death or injury, as well as the number of persons injured by categories (drivers, passengers, pedestrians).

On a yearly basis, road accidents are further analyzed. The competent agencies for filling in/collecting the forms on road accidents are the local Police Authorities and the local Port Authorities of Greece.

The lower level of analysis for the place where an injury road accident occurred is the Municipal – Local Commune, which is described by a 8-digit geographic code. Data are collected on a monthly basis. The main variables are the following: place of accident, kind of road, casualties, conditions of road surface and type of road.



Legal basis The Survey on Road Traffic Accidents is governed by Council Decision 93/704 of the European Community.

Reference Period Monthly.

Availability of Data Provisional data are available 2 months after the reference month.
Final data are available 10 months after the reference year.

National Definitions **Road accident** (injury accident): Any accident involving at least one road motor vehicle in motion on a public road or square to which the public has access (excluding yards, industrial sites or vehicle depot of public transport enterprises), resulting in at least one injured or killed person. Accidents with only material damages are not included.

Fatality (Death): Any person killed immediately or dying within 30 days as a result of an injury accident (This national definition applies since 01.01.1996)

Person injured: Any person who sustained an injury as result of an injury accident, and who normally needs medical treatment.

Serious injury: Any person who sustained an injury as result of an injury accident, such as brain damages, mutilation, multiple injuries, which may result in lack of awareness or which are life-threatening.

Slight injury: Any person injured who sustained minor and not life-threatening injuries.

Vehicle: Include motor vehicles, trolleybuses, motorcycles, bicycles, motorbikes, agricultural and road making machines, animal and hand-drawn vehicles. Railway vehicles are excluded, unless the road accident involves at least one of the aforementioned types of vehicles and therefore, railway vehicles are considered vehicles.

Methodology The forms of the survey are filled in by the local Police Authorities and the local Port Authorities as well.

References More information about road accidents is available on ELSTAT's website and more specifically at the link: www.statistics.gr > Population & Social Conditions > Accidents > Road Traffic Accidents. It should be noted that previous press releases and time series are available on ELSTAT's website: www.statistics.gr