



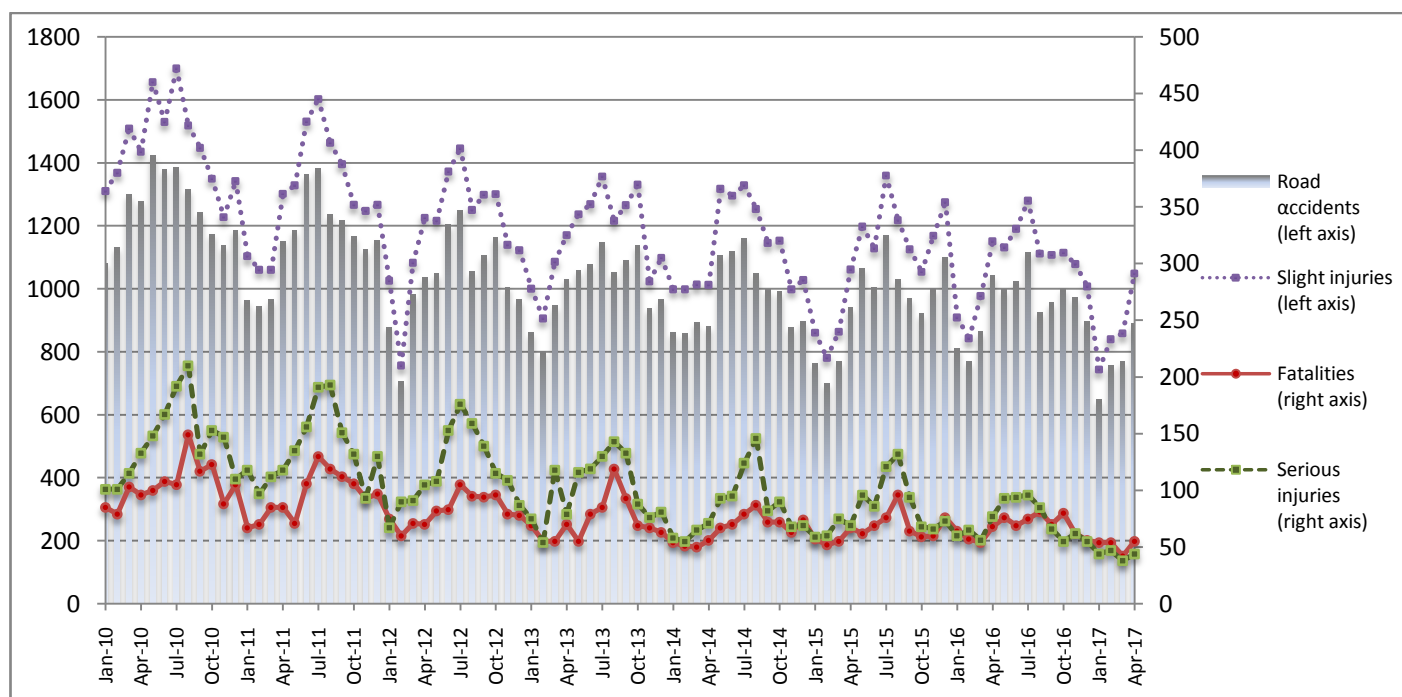
PRESS RELEASE

ROAD ACCIDENTS: April 2017

The Hellenic Statistical Authority (ELSTAT) announces data on Road Accidents for April 2017. In particular, the road traffic accidents which occurred in Greece, resulting in death or injury, decreased by 14.7% in comparison with the corresponding month of 2016 (890 road accidents in April 2017, against 1,043 road accidents in April 2016).

The casualties of the injury-causing accidents that occurred in April 2017 were as follows: 55 deaths, 44 serious injuries and 1,049 slight injuries. In contrast, in April 2016 the corresponding figures were: 68 deaths, 77 serious injuries and 1,151 slight injuries. Therefore, road accident casualties in April 2017 decreased by 19.1% for deaths, by 42.9% for serious injuries and by 8.9% for slight injuries.

**Graph 1: Road traffic accidents and casualties,
January 2010-April 2017**



Provisional data: Jul 16 – Apr 17

Data for the reference year are provisional until the finalisation of the annual data, which become final 10 months after the end of the reference year. During these 10 months the provisional data are updated on the basis of the data of the Road Accident Forms which are transmitted to ELSTAT by Police Authorities.

Information:

Social Statistics Division

Justice and Public Order Statistics Section

D. Athanasopoulou

Tel: +30 213 1352767

Fax : +30 213 1352764

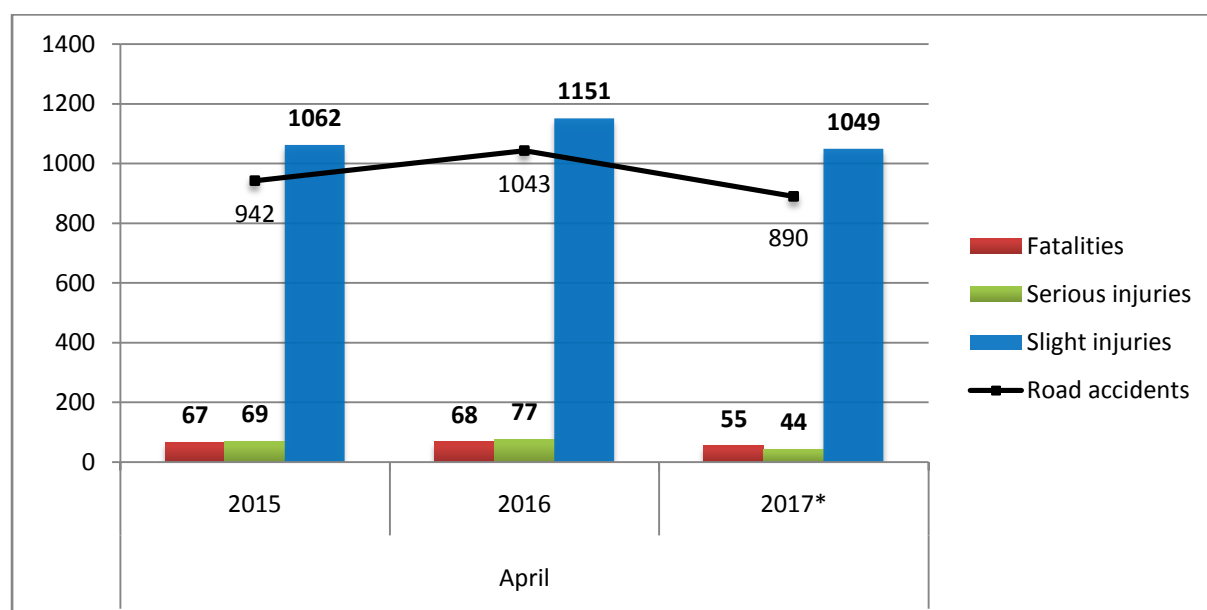
e-mail: d.athanasopoulou@statistics.gr

Table 1: Road traffic accidents and casualties, 2015-2017*

	April				
	2015	2016	2016/2015 (%)	2017*	2017*/2016 (%)
Road accidents	942	1,043	10.7%	890	-14.7%
Fatalities	67	68	1.5%	55	-19.1%
Total injuries	1,131	1,228	8.6%	1,093	-11.0%
Serious injuries	69	77	11.6%	44	-42.9%
Slight injuries	1,062	1,151	8.4%	1,049	-8.9%

* Provisional data

Graph 2: Road traffic accidents and casualties, 2015-2017*



* Provisional data

Table 2:
Road traffic accidents and casualties, by region and department,
April 2016 – 2017*

Region and Department	Road accidents			Fatalities			Serious injuries			Slight injuries		
	2016	2017*	%	2016	2017*	%	2016	2017*	%	2016	2017*	%
Greece Total	1,043	890	-14.7%	68	55	-19.1%	77	44	-42.9%	1,151	1,049	-8.9%
Anatoliki Macedonia, Thraki (East Macedonia and Thrace)	36	28	-22.2%	4	5	25.0%	5	3	-40.0%	40	33	-17.5%
Drama	4	8	100.0%	0	1		1	1		4	7	
Evros	6	6	0.0%	0	0		0	0		11	7	
Kavala	9	4	-55.6%	1	0		2	1		8	8	
Xanthi	4	5	25.0%	1	3		1	0		3	6	
Rodopi	13	5	-61.5%	2	1		1	1		14	5	
Kentriki Macedonia (Central Macedonia)	252	201	-20.2%	9	13	44.4%	12	5	-58.3%	284	249	-12.3%
Imathia	7	1	-85.7%	2	0		0	0		8	1	
Thessaloniki	215	174	-19.1%	2	11		7	4		250	212	
Kilkis	4	8	100.0%	1	0		0	0		4	9	
Pella	2	6	200.0%	1	0		0	1		1	7	
Pierria	2	0	-100.0%	0	0		0	0		2	0	
Serres	14	8	-42.9%	2	2		4	0		11	12	
Chalkidiki	8	4	-50.0%	1	0		1	0		8	8	
Dytiki Macedonia (West Macedonia)	8	3	-62.5%	2	0	-100.0%	1	1	0.0%	13	6	-53.8%
Grevena	0	1	-	0	0		0	0		0	2	
Kastoria	2	1	-50.0%	1	0		0	1		5	0	
Kozani	6	1	-83.3%	1	0		1	0		8	4	
Florina	0	0	-	0	0		0	0		0	0	
Ipeiros (Epirus)	3	7	133.3%	0	2	-	0	2	-	5	8	60.0%
Arta	0	3	-	0	0		0	2		0	1	
Thesprotia	2	2	0.0%	0	1		0	0		4	1	
Ioannina	1	2	100.0%	0	1		0	0		1	6	
Preveza	0	0	-	0	0		0	0		0	0	
Thessalia (Thessaly)	20	15	-25.0%	2	4	100.0%	3	1	-66.7%	22	19	-13.6%
Karditsa	4	2	-50.0%	1	0		0	0		5	4	
Larisa	7	7	0.0%	0	3		2	1		8	8	
Magnisia	5	1	-80.0%	1	0		1	0		3	1	
Trikala	4	5	25.0%	0	1		0	0		6	6	
Ionioi Nisoi (Ionian Islands)	14	11	-21.4%	2	3	50.0%	3	1	-66.7%	14	9	-35.7%
Zakynthos	1	2	100.0%	0	0		0	1		1	1	
Kerkyra	6	3	-50.0%	0	2		3	0		6	3	
Kefallinia	2	3	50.0%	0	1		0	0		2	2	
Lefkada	5	3	-40.0%	2	0		0	0		5	3	

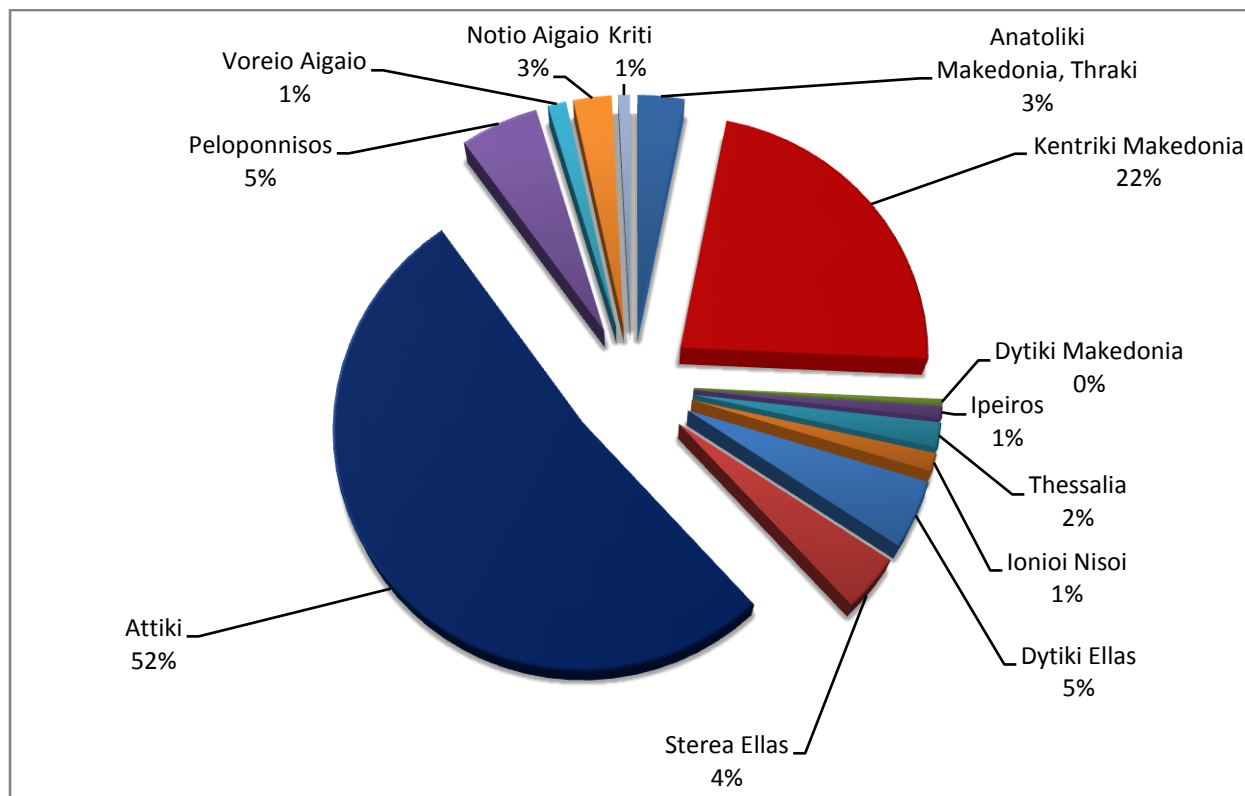
* Provisional data

Table 2 (Continued):
Road traffic accidents and casualties, by region and department,
April 2016 – 2017*

Region and Department	Road accidents			Fatalities			Serious injuries			Slight injuries		
	2016	2017*	%	2016	2017*	%	2016	2017*	%	2016	2017*	%
Dytiki Ellas (West Greece)	33	41	24.2%	7	7	0.0%	5	0	-100.0%	30	43	43.3%
Aitolia. Akarnania	9	15	66.7%	1	3		1	0		10	13	
Achaia	20	16	-20.0%	5	1		4	0		16	16	
Ileia	4	10	150.0%	1	3		0	0		4	14	
Stereia Ellas	31	34	9.7%	6	2	-66.7%	5	3	-40.0%	28	41	46.4%
Voiotia	5	11	120.0%	2	2		1	2		4	12	
Evvoia	18	15	-16.7%	2	0		4	0		15	18	
Evrytania	0	0	-	0	0		0	0		0	0	
Fthiotida	7	8	14.3%	1	0		0	1		9	11	
Fokida	1	0	-100.0%	1	0		0	0		0	0	
Attiki (Attica)	537	462	-14.0%	17	11	-35.3%	20	13	-35.0%	605	538	-11.1%
Peloponnisos (Peloponnese)	57	47	-17.5%	5	2	-60.0%	9	6	-33.3%	62	66	6.5%
Argolida	10	4	-60.0%	2	0		2	2		9	2	
Arkadia	5	6	20.0%	1	0		1	0		5	17	
Korinthia	25	20	-20.0%	2	1		3	1		28	31	
Lakonia	7	4	-42.9%	0	0		3	2		6	4	
Messinia	10	13	30.0%	0	1		0	1		14	12	
Voreio Aigaio (North Aegean)	7	11	57.1%	1	0	-100.0%	1	2	100.0%	10	11	10.0%
Lesvos	4	7	75.0%	0	0		1	1		4	7	
Samos	2	3	50.0%	1	0		0	1		5	3	
Chios	1	1	0.0%	0	0		0	0		1	1	
Notio Aigaio (South Aegean)	24	23	-4.2%	3	3	0.0%	6	6	0.0%	25	20	-20.0%
Dodekanisos	16	14	-12.5%	3	2		3	5		17	8	
Kyklades	8	9	12.5%	0	1		3	1		8	12	
Kriti (Crete)	21	7	-66.7%	10	3	-70.0%	7	1	-85.7%	13	6	-53.8%
Irakleio	10	3	-70.0%	5	1		4	1		7	2	
Lasithi	5	0	-100.0%	2	0		1	0		2	0	
Rethymno	0	0	-	0	0		0	0		0	0	
Chania	6	4	-33.3%	3	2		2	0		4	4	

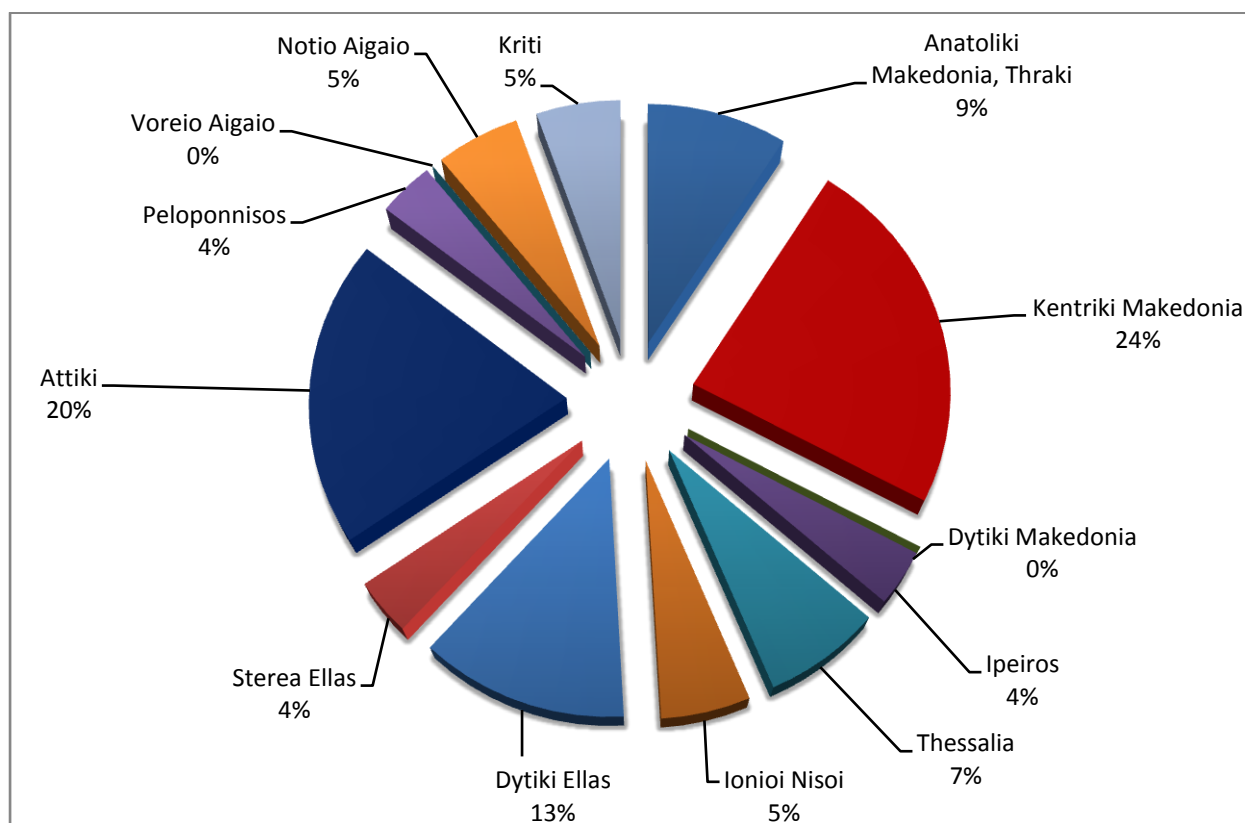
* Provisional data

**Graph 3: Road traffic accidents by region,
April 2017 ***



* Provisional data

**Graph 4: Fatalities by region,
April 2017 ***



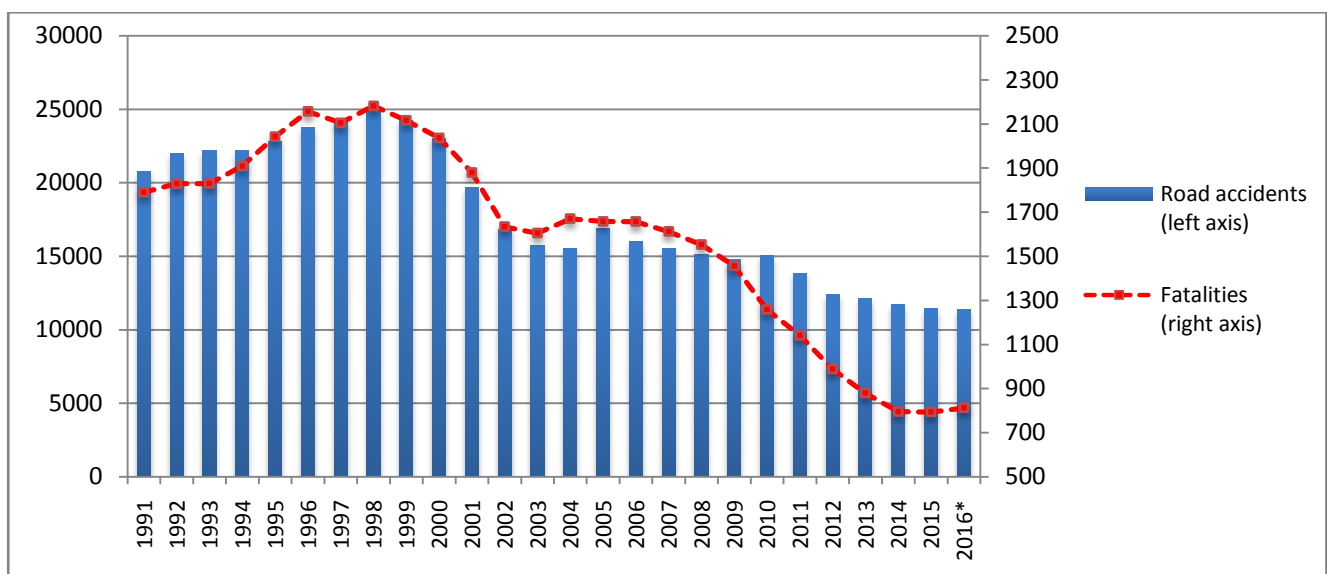
* Provisional data

Table 3: Road Traffic Accidents and casualties for the period January-April 2015, 2016 and 2017*

	2015		2016		2017 *
	January - April	Total year	January - April	Total year *	January - April
Road Accidents	3,174	11,440	3,486	11,374	3,064
Annual Change (%) :			9.8%	-0.6%	-12.1%
Fatalities	231	793	243	812	205
Annual Change (%) :			5.2%	2.4%	-15.6%
Serious injuries	263	999	258	864	173
Annual Change (%) :			-1.9%	-13.5%	-32.9%
Slight injuries	3,568	13,097	3,881	12,906	3,492
Annual Change (%) :			8.8%	-1.5%	-10.0%

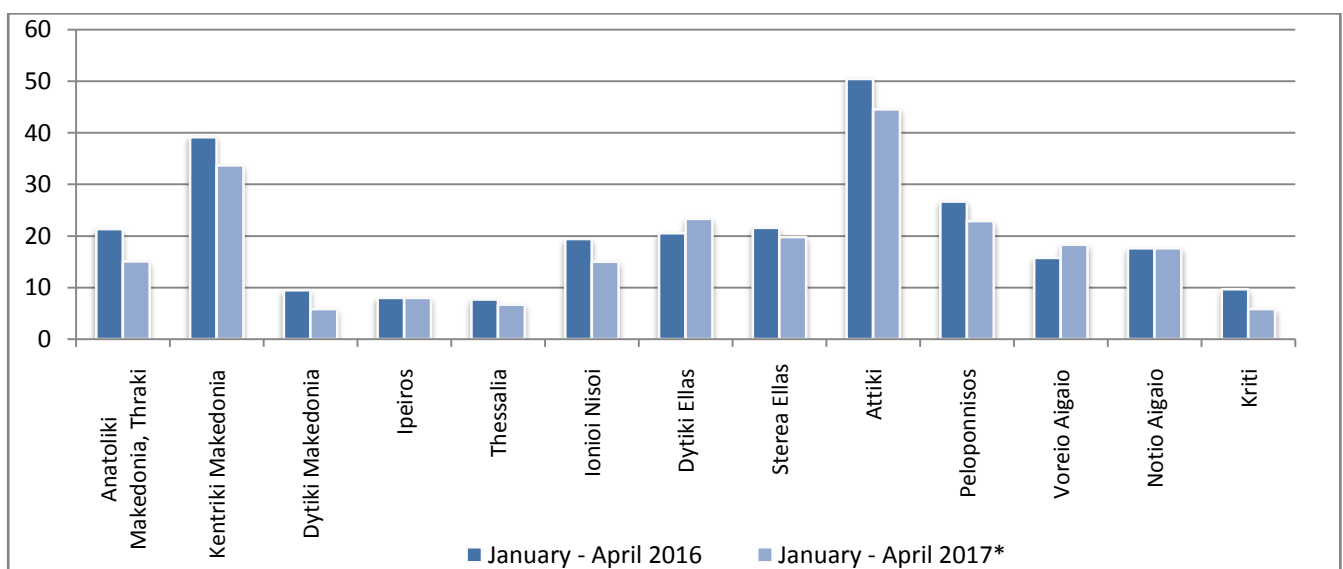
* Provisional data

Graph 5: Total Road traffic accidents and fatalities, 1991-2016*



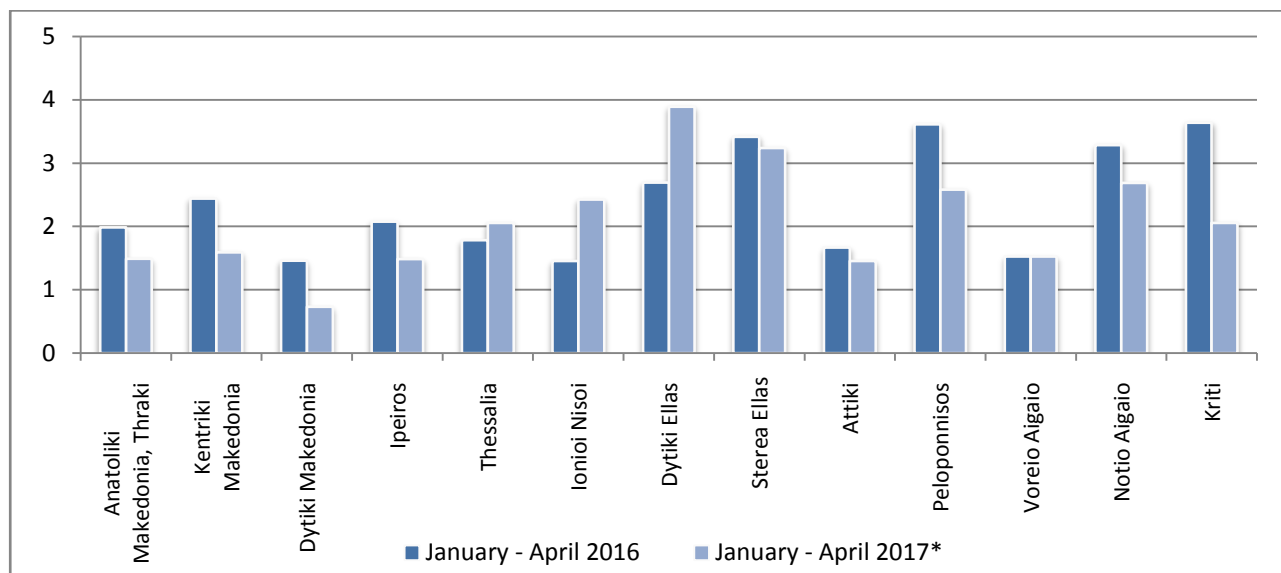
* Provisional data: Jul 16 – Dec 16

Graph 6: Road accidents per 100,000 inhabitants

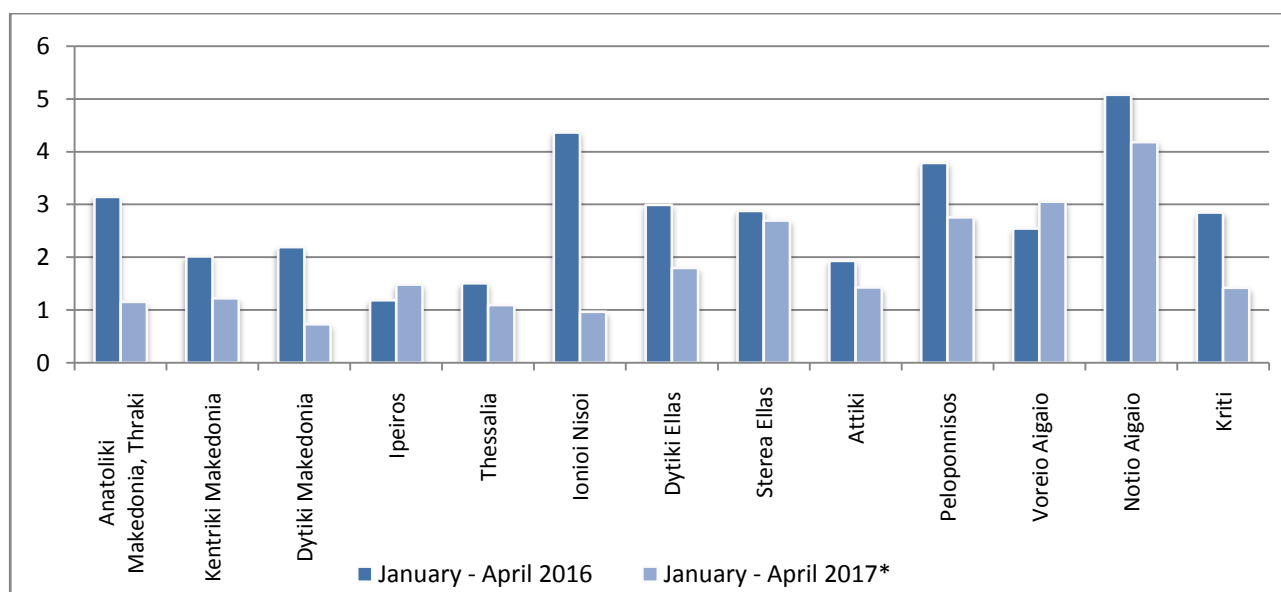


* Provisional data

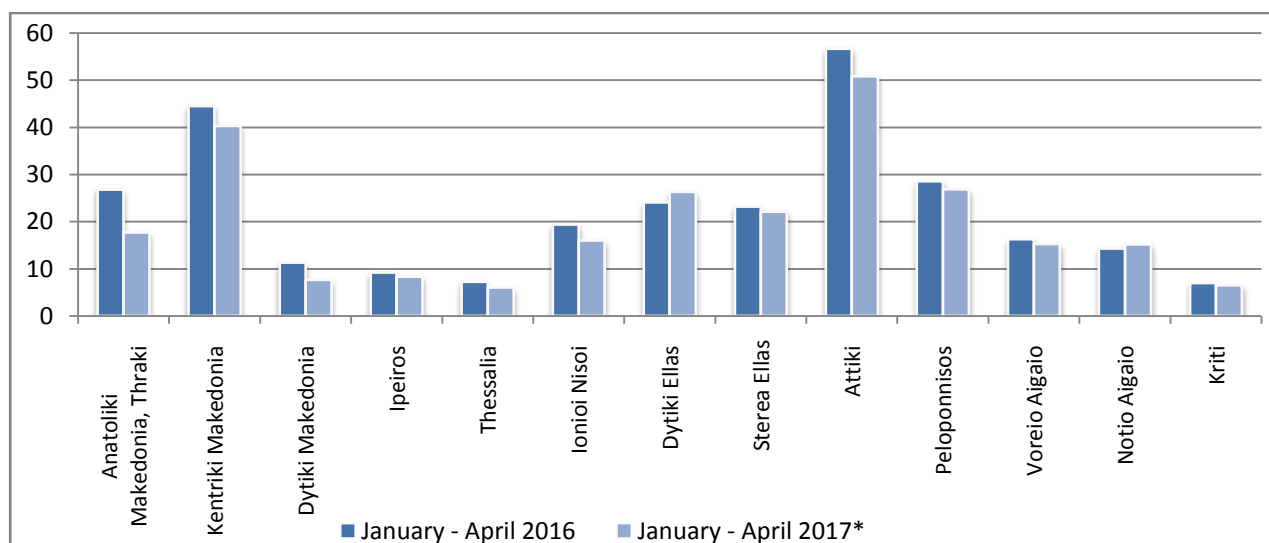
Graph 7: Fatalities per 100,000 inhabitants



Graph 8: Serious injuries per 100,000 inhabitants



Graph 9: Slight injuries per 100,000 inhabitants



* Provisional data

Explanatory Notes

Survey on Road Accidents	<p>The survey on road accidents is conducted on a monthly basis and it records, for each department of Greece and for each month separately, the number of accidents resulting in death or injury, as well as the number of persons injured by categories (drivers, passengers, pedestrians).</p> <p>On a yearly basis, road accidents are further analyzed. The competent agencies for filling in/collecting the forms on road accidents are the local Police Authorities and the local Port Authorities of Greece.</p> <p>The lower level of analysis for the place where an injury road accident occurred is the settlement (oikismos), which is described by a 8-digit geographic code. Data are collected on a monthly basis. The main variables are the following: place of accident, kind of road, casualties, conditions of road surface and type of road.</p>
Legal basis	<p>The Survey on Road Traffic Accidents is governed by Council Decision 93/704 of the European Community.</p>
Reference Period	<p>Monthly.</p>
Availability of Data	<p>Provisional data are available 2 months after the reference month.</p> <p>Final data are available 10 months after the reference year.</p>
National Definitions	<p>Road accident (injury accident): Any accident involving at least one road motor vehicle in motion on a public road or square to which the public has access (excluding yards, industrial sites or vehicle depot of public transport enterprises), resulting in at least one injured or killed person. Accidents with only material damages are not included.</p> <p>Fatality (Death): Any person killed immediately or dying within 30 days as a result of an injury accident (This national definition applies since 01.01.1996)</p> <p>Person injured: Any person who sustained an injury as result of an injury accident, and who normally needs medical treatment.</p> <p>Serious injury: Any person who sustained an injury as result of an injury accident, such as brain damages, mutilation, multiple injuries, which may result in lack of awareness or which are life-threatening.</p> <p>Slight injury: Any person injured who sustained minor and not life-threatening injuries.</p> <p>Vehicle: Include motor vehicles, trolleybuses, motorcycles, bicycles, motorbikes, agricultural and road making machines, animal and hand-drawn vehicles. Railway vehicles are excluded, unless the road accident involves at least one of the aforementioned types of vehicles and therefore, railway vehicles are considered vehicles.</p>
Methodology	<p>The forms of the survey are filled in by the local Police Authorities and the local Port Authorities as well.</p>
References	<p>More information about road accidents is available on ELSTAT's website and more specifically at the link: www.statistics.gr > Population & Social Conditions > Accidents > Road Traffic Accidents.</p> <p>It should be noted that previous press releases and time series are available on ELSTAT's website: www.statistics.gr</p>