



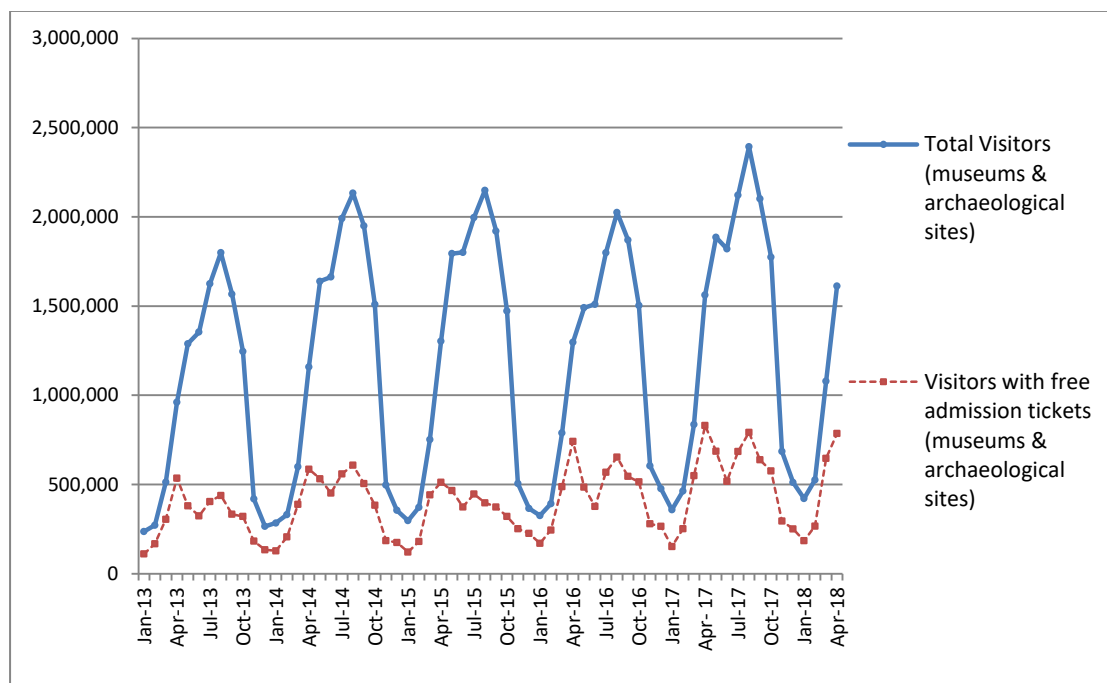
## PRESS RELEASE

### SURVEY ON MUSEUMS AND ARCHAEOLOGICAL SITES ATTENDANCE APRIL 2018

The Hellenic Statistical Authority (ELSTAT) announces the results of the *Survey on Museums and Archaeological Sites Attendance* for April 2018. More specifically:

- In April 2018 compared with the corresponding month of 2017, Museums experienced an 1.1% decrease in the number of visitors and a 9.5% decrease in the number of free admission visitors as well as a 10.1 % increase in their receipts (Table 1),
- In April 2018 compared with the corresponding month of 2017, the number of visitors at Archaeological sites recorded an increase of 5.3%, while a decrease of 3.1% was observed in the number of free admission visitors and a 13.1% increase in the corresponding receipts (Table 1),
- During the four-month period from January to April 2018, an increase of 5.2% was observed in the number of visitors of Museums, while an increase of 0.4% was recorded in the number of free admission visitors and a 11.1% increase in the relevant receipts, in comparison with the corresponding period of 2017 (Table 2),
- As regards Archaeological sites, during the four-month period from January to April 2018, an increase of 17.9 % was recorded in the number of visitors, while a 9.3% increase was observed in the number of free admission visitors and a 21.5% increase in the relevant receipts, in comparison with the corresponding period of 2017 (Table 2),

**Graph 1: Visitors of Museums and Archaeological sites (Jan 2013 – Apr 2018)**



**Information:**

Social Statistics Division

Section of Culture and Sports statistics,

Argyri Pateraki (Tel: +30 213 1352129, e-mail: [ar.pateraki@statistics.gr](mailto:ar.pateraki@statistics.gr))

**TABLE 1: VISITORS OF MUSEUMS AND ARCHAEOLOGICAL SITES - TOTAL RECEIPTS  
(APRIL 2017 & APRIL 2018)**

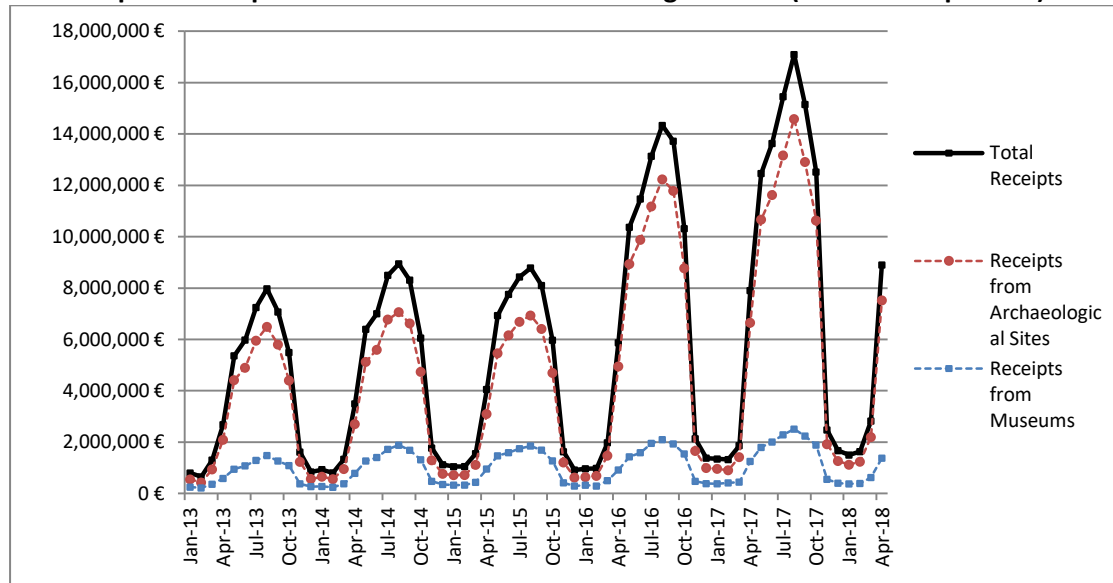
<b>I. VISITORS</b>			
<b>Museums and Archaeological sites</b>	<b>2017</b>	<b>2018</b>	<b>Change 2018/2017</b>
<b>Total number of visitors (A+B)</b>	<b>1,561,822</b>	<b>1,612,080</b>	<b>3.2%</b>
<b>A. Museums (C+E)</b>	<b>502,948</b>	<b>497,508</b>	<b>-1.1%</b>
Acropolis Museum	144,570	154,917	7.2%
National Archaeological	56,397	52,985	-6.0%
Ancient Olympia	22,758	22,788	0.1%
Palace of the Grand Master (Rhodes)	15,855	11,714	-26.1%
Herakleion Archaeological (Crete)	31,997	39,123	22.3%
White Tower	28,841	17,990	-37.6%
Delphi	28,563	30,239	5.9%
Other museums	173,967	167,752	-3.6%
<b>B. Archaeological Sites (D+F)</b>	<b>1,058,874</b>	<b>1,114,572</b>	<b>5.3%</b>
Epidavros <sup>(1)</sup>	68,429	72,339	5.7%
The Acropolis of Mycenae & Atreus' Treasure	59,303	68,268	15.1%
The Acropolis of Athens <sup>(2)</sup>	211,966	294,635	39.0%
Sounio	28,092	33,228	18.3%
The Acropolis of Lindos	18,758	17,421	-7.1%
Royal Tombs of Vergina	26,485	29,426	11.1%
Ancient Olympia	47,368	47,157	-0.4%
Knossos (Crete)	43,056	47,308	9.9%
Phaistos (Crete)	6,432	13,936	116.7%
Ancient Korinthos <sup>(1)</sup>	39,636	20,088	-49.3%
Mystras <sup>(1)</sup>	16,866	18,942	12.3%
Delphi	41,532	50,197	20.9%
Other archaeological sites	450,951	401,627	-10.9%
<b>II. VISITORS WHO PAID TICKET</b>			
	<b>2017</b>	<b>2018</b>	<b>Change 2018/2017</b>
<b>Total number of visitors who paid ticket (C+D)</b>	<b>731,383</b>	<b>826,288</b>	<b>13.0%</b>
C. Museums	210,797	233,210	10.6%
D. Archaeological sites	520,586	593,078	13.9%
<b>III. VISITORS WITH FREE ADMISSION TICKETS</b>			
	<b>2017</b>	<b>2018</b>	<b>Change 2018/2017</b>
<b>Total number of visitors with free admission ticket (E+F)</b>	<b>830,439</b>	<b>785,792</b>	<b>-5.4%</b>
E. Museums	292,151	264,298	-9.5%
F. Archaeological sites	538,288	521,494	-3.1%
<b>IV. RECEIPTS (euros)</b>			
	<b>2017</b>	<b>2018</b>	<b>Change 2018/2017</b>
<b>Total Receipts (G+H)</b>	<b>7,902,975.00</b>	<b>8,899,595.00</b>	<b>12.6%</b>
G. Museums	1,251,578.00	1,377,812.00	10.1%
H. Archaeological sites	6,651,397.00	7,521,783.00	13.1%

<sup>(1)</sup> Flat rate ticket, valid both for the museum and the archaeological site,

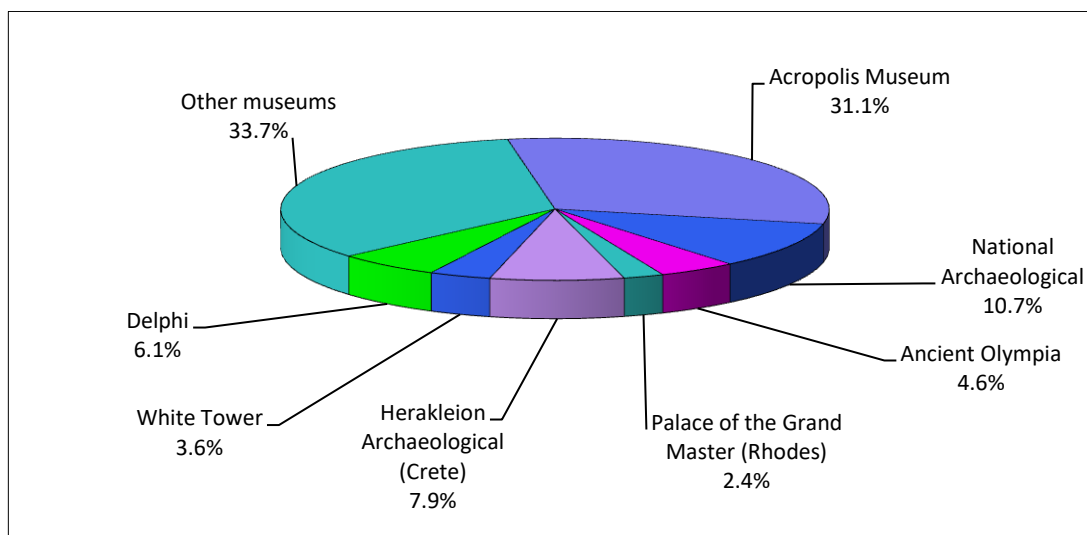
<sup>(2)</sup> From May 2017 onwards, the data for the number of tickets in the archaeological site of the Acropolis of Athens include the tickets of the Ancient Theatre of Dionysos, therefore the data for the years 2017-2018 are not comparable.

The following graphs depict the evolution of the receipts (Graph 2), as well as the number of visitors by Museum and Archaeological Site (Graphs 3 and 4, respectively),

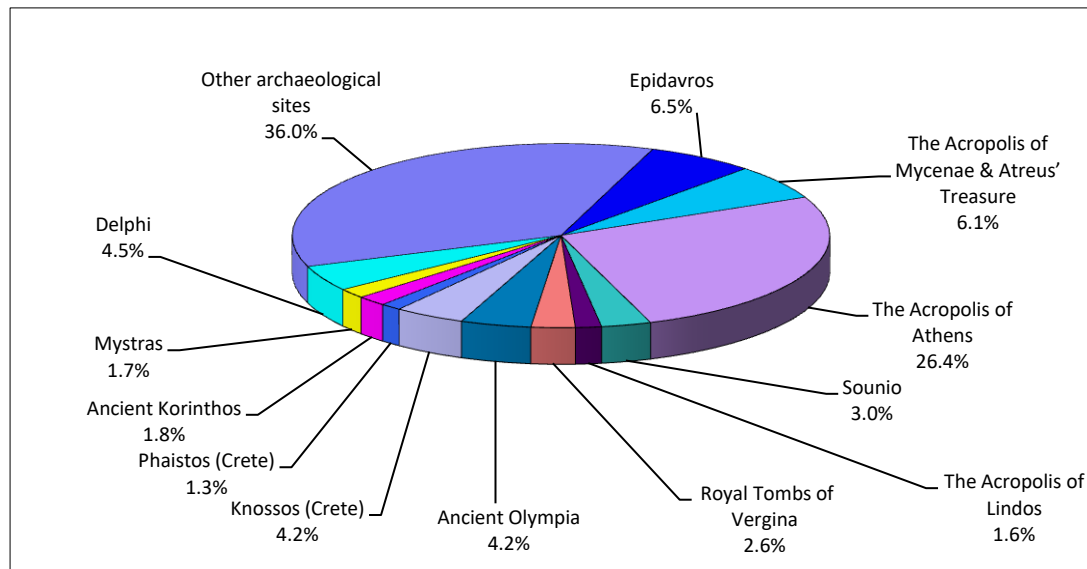
**Graph 2: Receipts from Museums and Archaeological Sites (Jan 2013 –Apr 2018)**



**Graph 3: Percentage distribution of Visitors by Museum, April 2018**



**Graph 4: Percentage distribution of Visitors by Archaeological site, April 2018**



**TABLE 2: VISITORS OF MUSEUMS AND ARCHAEOLOGICAL SITES - TOTAL RECEIPTS**  
(2016, 2017 AND JANUARY-APRIL 2017 & 2018)

<b>I. VISITORS</b>					
Museums and Archaeological sites	2016	2017	JANUARY-APRIL		change
			2017	2018	2018/2017
<b>Total number of visitors (A+B)</b>	<b>14,080,639</b>	<b>16,510,878</b>	<b>3,218,984</b>	<b>3,637,176</b>	<b>13.0%</b>
<b>A. Museums (C+E)</b>	<b>4,515,966</b>	<b>5,191,781</b>	<b>1,249,352</b>	<b>1,314,221</b>	<b>5.2%</b>
Acropolis Museum	1,406,096	1,593,362	405,776	442,287	9.0%
National Archaeological	447,093	545,555	149,990	153,318	2.2%
Ancient Olympia	124,136	145,118	38,716	43,277	11.8%
Palace of the Grand Master (Rhodes)	237,361	235,413	23,071	16,825	-27.1%
Herakleion Archaeological (Crete)	394,915	426,191	47,533	75,161	58.1%
White Tower	290,192	268,149	80,523	57,794	-28.2%
Delphi	166,091	211,827	56,838	64,844	14.1%
Other museums	1,450,082	1,766,166	446,905	460,715	3.1%
<b>B. Archaeological Sites (D+F)</b>	<b>9,564,673</b>	<b>11,319,097</b>	<b>1,969,632</b>	<b>2,322,955</b>	<b>17.9%</b>
Epidavros <sup>(1)</sup>	375,437	469,060	111,791	133,253	19.2%
The Acropolis of Mycenae & Atreus' Treasure	342,854	398,718	107,532	131,048	21.9%
The Acropolis of Athens	1,807,580	2,766,218	451,326	706,156	56.5%
Sounio	222,800	259,709	63,505	79,820	25.7%
The Acropolis of Lindos	421,070	441,012	21,662	19,986	-7.7%
Royal Tombs of Vergina	186,627	203,632	56,096	62,092	10.7%
Ancient Olympia	423,424	481,252	75,001	81,398	8.5%
Knossos (Crete)	611,455	634,710	57,168	83,149	45.4%
Phaistos (Crete)	77,071	95,182	8,083	33,987	320.5%
Ancient Korinthos <sup>(1)</sup>	153,307	191,836	54,942	40,786	-25.8%
Mystras <sup>(1)</sup>	114,293	125,549	25,934	30,973	19.4%
Delphi	290,705	345,804	85,360	104,998	23.0%
Other archaeological sites	4,538,050	4,906,415	851,232	815,309	-4.2%
<b>II. VISITORS WHO PAID TICKET</b>					
	2016	2017	JANUARY-APRIL		change
			2017	2018	2018/2017
<b>Total number of visitors who paid ticket (C+D)</b>	<b>8,749,957</b>	<b>10,288,448</b>	<b>1,436,133</b>	<b>1,754,404</b>	<b>22.2%</b>
C. Museums	2,406,665	2,831,466	504,068	565,800	12.2%
D. Archaeological sites	6,343,292	7,456,982	932,065	1,188,604	27.5%
<b>III. VISITORS WITH FREE ADMISSION TICKETS</b>					
	2016	2017	JANUARY-APRIL		change
			2017	2018	2017/2016
<b>Total number of visitors with free admission ticket (E+F)</b>	<b>5,330,682</b>	<b>6,222,430</b>	<b>1,782,851</b>	<b>1,882,772</b>	<b>5.6%</b>
E. Museums	2,109,301	2,360,315	745,284	748,421	0.4%
F. Archaeological sites	3,221,381	3,862,115	1,037,567	1,134,351	9.3%
<b>IV. RECEIPTS (euros)</b>					
	2016	2017	JANUARY-APRIL		change
			2017	2018	2017/2016
<b>Total Receipts (G+H)</b>	<b>86,647,638.00</b>	<b>102,887,879.00</b>	<b>12,434,036.00</b>	<b>14,853,203.00</b>	<b>19.5%</b>
G. Museums	13,448,464.00	16,175,121.00	2,493,831.00	2,771,856.00	11.1%
H. Archaeological sites	73,199,174.00	86,712,758.00	9,940,205.00	12,081,347.00	21.5%

<sup>(1)</sup> Flat rate ticket, valid both for the museum and the archaeological site,

<sup>(2)</sup> From May 2017 onwards, the data for the number of tickets in the archaeological site of the Acropolis of Athens include the tickets of the Ancient Theatre of Dionysos, therefore the data for the years 2017-2018 are not comparable.

## EXPLANATORY NOTES

<b>Survey on Museums and Archaeological Sites Attendance</b>	The Survey on Museums and Archaeological Sites Attendance has been producing results since 1970, The survey collects data from the Archaeological Receipts Fund (ARF) of the Ministry of Culture and Sports concerning the number of visitors and the receipts from the tickets sold in the Museums and Archaeological sites of the country. The corresponding data for the Acropolis Museum are available from December 2009 onwards.
<b>Legal Framework</b>	The survey is conducted since 1970 on a regular basis and it produces results on a monthly and yearly basis, in compliance with the Joint Ministerial Decision 15189/B379/73.
<b>Reference Period</b>	01/04/2018 to 30/04/2018.
<b>Methodology and Definitions</b>	The Survey is conducted on a monthly basis from data collected from the Archaeological Receipts Fund (ARF) of the Ministry of Culture and Sports concerning on the number of visitors and the receipts from the tickets sold in the Museums and Archaeological sites of the country, ELSTAT tabulates the data on Museums and the Archaeological sites for the whole of the Country, by month and by year.

### Information on ticket payment

- From January 2002 onwards, the number of Museums' visitors includes both the visitors who have bought a ticket and the visitors with free admission ticket, From 16-06-1996 onwards, the Museums and the Archaeological sites all over Greece have a paid admission for all the visitors, Greeks and foreigners, all over the year, except in the following days, which are free admission days:
- National Holidays (25th of March and 28th of October)
- The first Sunday every month during the five month period from 1 November to 31 March
- The 6th of March (in memory of Melina Merkouri)
- The 18th of April (International Monuments Day)
- The 18th of May (International Museums Day)
- The 5th of June (International Environment Day)
- The last weekend of September, annually (European Heritage Days)

### Free admission tickets

The admission to Museums and Archaeological site is free for:

- Young people from EU-countries aged under 18 years, with current identification card to confirm their age,
- Students of Universities and of Higher and Technical Education Institutions or equivalent institutions of EU-countries, as well as of Tour Guide Training Institutes, with valid student identification card or International Student Identity Card (ISIC)
- Employees of the Hellenic Ministry of Culture, with valid professional identity card
- ICOM and ICOMOS cardholders
- Tour Guides with their current working identification card from the Ministry of Development
- Teachers accompanying pupils and students on primary, secondary and tertiary education institution tours
- Journalists with valid journalists' identification card
- Members of Associations and Societies of Friends of Museums and Archaeological Sites
- Official guests of the Greek Government, after relevant approval
- Escorts of blind persons and persons with disabilities
- Free admission cardholders
- Holders of the Culture Card

### Number of flat rate tickets

From April 1999 onwards, in some museums and the nearby archaeological sites, in addition to the ordinary ticket, a new "flat rate ticket" was established, which is valid for both the museum and the nearby archaeological site, The total number of these flat rate tickets for **April 2018** was **67,998**.

More information on the Survey on Museums and Archaeological Sites Attendance and detailed time series are available on: <http://www.statistics.gr/en/statistics/-/publication/SCI21/>