



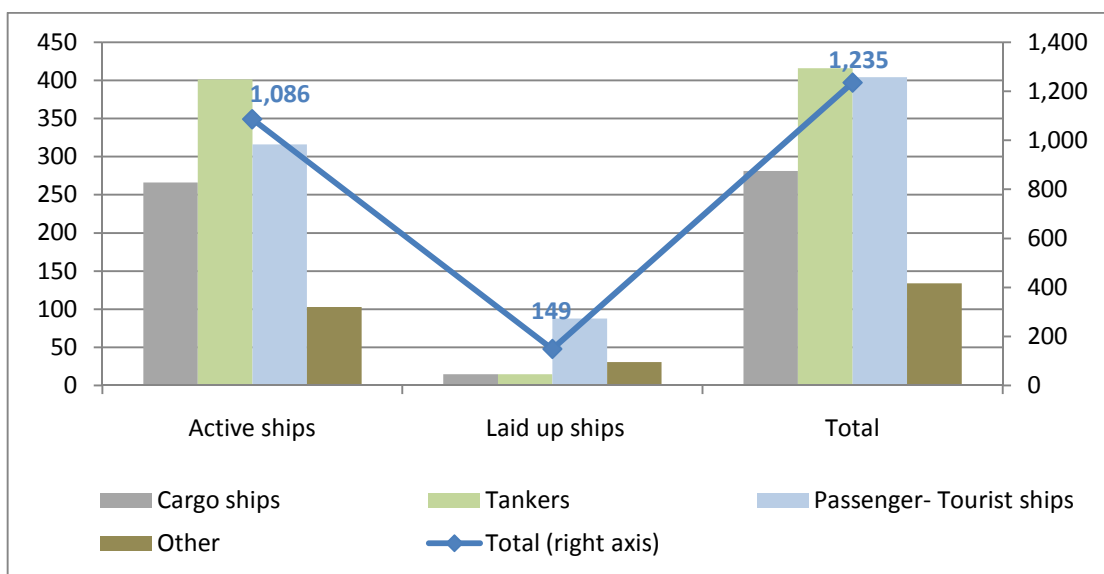
## PRESS RELEASE

### Census of merchant ships and crews on the 20<sup>th</sup> of September 2016

The Hellenic Statistical Authority (ELSTAT) announces the results of the census of merchant ships<sup>1</sup> and crews of the 20<sup>th</sup> of September 2016. According to the census data, out of a total of 1,325 merchant ships, 100 GRT and over, that are included in the Seamen's Pension Fund (NAT) register<sup>2</sup>, 1,235 ships were enumerated from which 1,180 ships were under the Greek flag and 55 ships were Greek-owned under foreign flag contracted with the Seamen's Pension Fund. Out of these 1,180 Greek-flag ships, 1,041 were active, 139 were laid-up ships. Out of the 55 Greek-owned ships under foreign flag, contracted with the Seamen's Pension Fund, 45 ships were active and 10 ships were laid-up (Table 1, Graph 1).

Of the total of 1,235 vessels recorded on the day of the census, 21,440 Greek and foreign seamen were employed, while on 20.09.2014 the total number of the Greek and foreign seamen amounted to 22,925 recording a decrease of 6.5% (Table 2). More specifically, 20,666 seamen were employed on the enumerated ships under Greek flag; 56.4% of the crew was Greek seamen while 43.6% were seamen with foreign nationality. As regards the Greek-owned ships under foreign flag, contracted with the Seamen's Pension Fund, 774 seamen were employed on these ships and 66.4% of the crew was Greek seamen and 33.6% were seamen with foreign nationality (Table 2, Graph 2).

**Graph 1: Merchant ships under Greek flag or Greek-owned under foreign flag, contracted with the Seamen's Pension Fund on the census day (20-9-2016)**



#### **Information:**

Division of Statistics on Trade and Services  
Section of Shipping Statistics  
Georgakopoulou Foteini, Rapti Panagiota  
Tel.: 213 135 3090, 213 135 3122, Fax: 213 135 2398  
email : [f.georgakopoulou@statistics.gr](mailto:f.georgakopoulou@statistics.gr), [p.rapti@statistics.gr](mailto:p.rapti@statistics.gr)

<sup>1</sup> 100 GRT and over

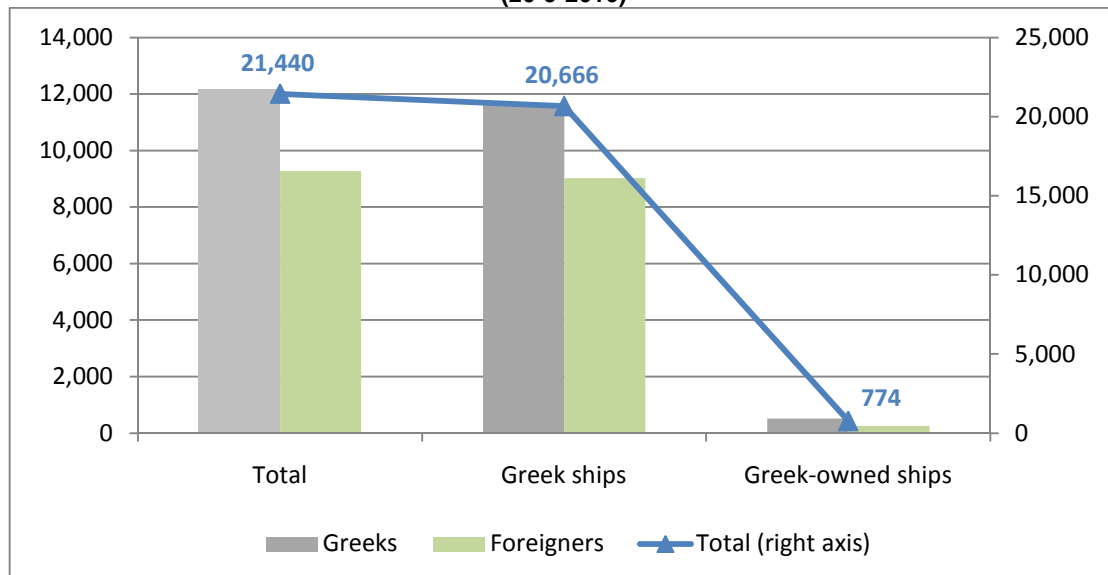
<sup>2</sup> The census was conducted on the basis of the Ships Register provided by National Seamen Pension Fund

The comparison between the data of the 2016 census and the corresponding data of the 2014 census indicates a decrease of 3.0% in the total number of Greek and foreign seamen on ships under Greek flag (1,180 ships) and a decrease 51.9% is recorded in the total number of Greek and foreign seamen employed on the Greek-owned ships under foreign flag, contracted with the Seamen's Pension Fund (55 ships). Specifically, a decrease of 1.3% is observed in the Greek seamen employed on ships under Greek flag and a decrease of 40.4% is observed in the number of Greek seamen employed on Greek-owned ships under foreign flag. Respectively, a decrease of 5.2% is observed in the seamen with foreign nationality employed on ships under Greek flag, as well as a decrease of 65.2% is observed in the number of foreign seamen employed on Greek-owned ships under foreign flag, contracted with the Seamen's Pension Fund (Table 2, Graph 3).

The distribution of the seafaring labour force among the different categories of ships indicates that 5,166 (24.1%) Greek and foreign seamen were employed on cargo ships, 9,494 (44.3%) on tankers, 6,144 (28.7%) on passenger and tourist ships and 636 (2.9%) were employed on "other ships" (Table 1).

According to the census data of year 2016, it is observed that out of the total of 20,666 Greek and foreign seamen employed on Greek ships, the senior personnel accounts for 32.7% (6,766 people) of the crew, the lower personnel for 59.8% (12,366 people), the cadets and healthcare personnel for 7.3% (1,507 people) and the personnel with no specialty accounts for 0.1% (27 people). Respectively, out of the total of 774 Greek and foreign seamen on Greek-owned ships, contracted with Seamen's Pension Fund, the senior personnel accounts for 28.6% (221 seamen) of the crew, the lower personnel for 63.2% (489 seamen), cadets and healthcare personnel for 3.6% (28 seamen) and the personnel with no specialty accounts for 4.7% (36 seamen), (Table 3, Graph 4).

**Graph 2: Greek and foreign seamen employed on merchant ships of 100 GRT and over, under Greek flag or Greek-owned under foreign flag, contracted with the Seamen's Pension Fund in census day (20-9-2016)**



**Table 1. Merchant ships of 100 GRT and over, under Greek flag or Greek-owned under foreign flag, contracted with the Seamen's Pension Fund and seamen employed on them on 20th September 2016, by category of ships**

	Greek ships				Greek-owned ships				Total		Percentage of seamen (%)			
	Crew of ships				Crew of ships				Ships	Crew of ships	Greek ships		Greek-owned ships	
	Ships	Greek	Foreign	Total	Ships	Greek	Foreign	Total			Greek	Foreign	Greek	Foreign
<b><i>Ships enumerated at the census</i></b>	<b>1,180</b>	<b>11,649</b>	<b>9,017</b>	<b>20,666</b>	<b>55</b>	<b>514</b>	<b>260</b>	<b>774</b>	<b>1,235</b>	<b>21,440</b>	<b>56.4</b>	<b>43.6</b>	<b>66.4</b>	<b>33.6</b>
Cargo ships	274	2,089	2,992	5,081	7	57	28	85	281	5,166	41.1	58.9	67.1	32.9
Tankers	415	3,751	5,716	9,467	1	4	23	27	416	9,494	39.6	60.4	14.8	85.2
Passenger-Tourist ships	359	5,248	265	5,513	45	422	209	631	404	6,144	95.2	4.8	66.9	33.1
Other	132	561	44	605	2	31	0	31	134	636	92.7	7.3	100.0	0.0
<b>Active ships</b>	<b>1,041</b>	<b>11,427</b>	<b>8,968</b>	<b>20,395</b>	<b>45</b>	<b>487</b>	<b>256</b>	<b>743</b>	<b>1,086</b>	<b>21,138</b>	<b>56.0</b>	<b>44.0</b>	<b>65.5</b>	<b>34.5</b>
Cargo ships	260	2,052	2,944	4,996	6	57	28	85	266	5,081	41.1	58.9	67.1	32.9
Tankers	400	3,748	5,716	9,464	1	4	23	27	401	9,491	39.6	60.4	14.8	85.2
Passenger-Tourist ships	280	5,094	264	5,358	36	395	205	600	316	5,958	95.1	4.9	65.8	34.2
Other	101	533	44	577	2	31	0	31	103	608	92.4	7.6	100.0	0.0
<b>Laid up ships</b>	<b>139</b>	<b>222</b>	<b>49</b>	<b>271</b>	<b>10</b>	<b>27</b>	<b>4</b>	<b>31</b>	<b>149</b>	<b>302</b>	<b>81.9</b>	<b>18.1</b>	<b>87.1</b>	<b>12.9</b>
Cargo ships	14	37	48	85	1	0	0	0	15	85	43.5	56.5	0.0	0.0
Tankers	15	3	0	3	0	0	0	0	15	3	100.0	0.0	0.0	0.0
Passenger-Tourist ships	79	154	1	155	9	27	4	31	88	186	99.4	0.6	87.1	12.9
Other	31	28	0	28	0	0	0	0	31	28	100.0	0.0	0.0	0.0
<b><i>Ships not enumerated at the census for various reasons</i></b>	<b>86</b>				<b>4</b>				<b>90</b>					

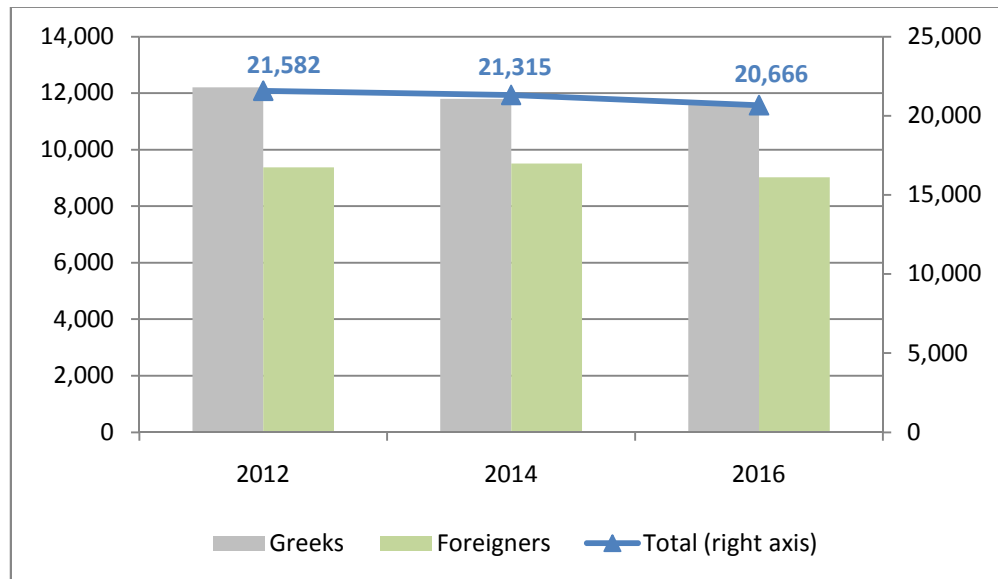
**Table 2. Greek and foreign seamen employed on merchant ships of 100 GRT and over, under Greek flag or Greek-owned under foreign flag, contracted with the Seamen's Pension Fund: 2012, 2014 and 2016**

	Number of seamen			Change (%)		Percentage (%)		
	20/9/2012	20/9/2014	20/9/2016	2014/2012	2016/2014	20/9/2012	20/9/2014	20/9/2016
<b>Seamen employed on Greek and Greek-owned merchant ships</b>	<b>22,880</b>	<b>22,925</b>	<b>21,440</b>	<b>0.2</b>	<b>-6.5</b>	<b>100</b>	<b>100</b>	<b>100</b>
Greeks	13,026	12,663	12,163	-2.8	-3.9	56.9	55.2	56.7
Foreigners	9,854	10,262	9,277	4.1	-9.6	43.1	44.8	43.3
<b>Seamen employed on Greek merchant ships</b>	<b>21,582</b>	<b>21,315</b>	<b>20,666</b>	<b>-1.2</b>	<b>-3.0</b>	<b>100</b>	<b>100</b>	<b>100</b>
Greeks	12,209	11,801	11,649	-3.3	-1.3	56.6	55.4	56.4
Foreigners	9,373	9,514	9,017	1.5	-5.2	43.4	44.6	43.6
<b>Seamen employed on Greek-owned merchant ships</b>	<b>1,298</b>	<b>1,610</b>	<b>774</b>	<b>24.0</b>	<b>-51.9</b>	<b>100</b>	<b>100</b>	<b>100</b>
Greeks	817	862	514	5.5	-40.4	62.9	53.5	66.4
Foreigners	481	748	260	55.5	-65.2	37.1	46.5	33.6

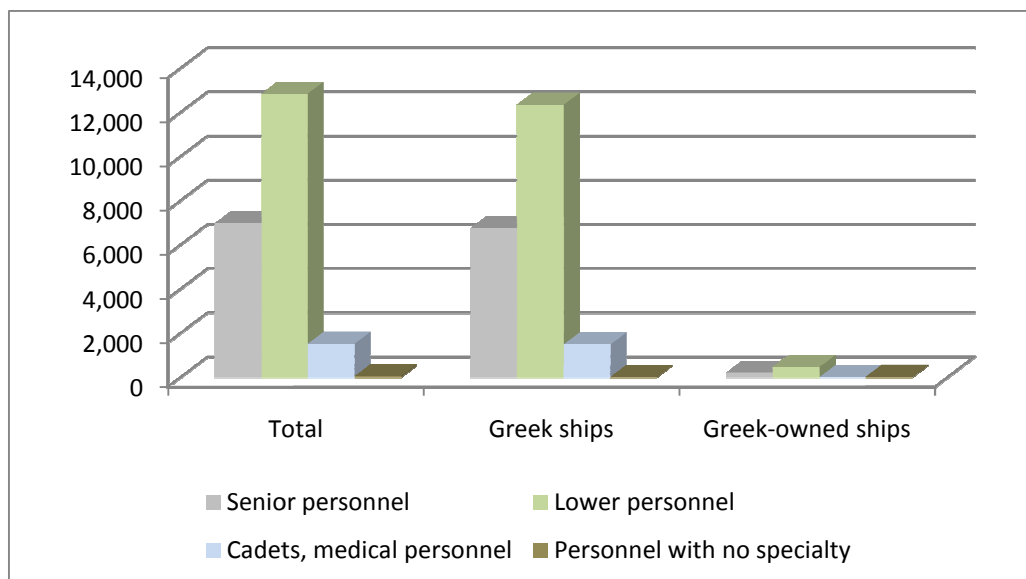
**Table 3. Seamen employed on merchant ships of 100 GRT and over, under Greek flag or Greek-owned under foreign flag, contracted with the Seamen's Pension Fund, by major groups of specialties: 2012, 2014 and 2016**

Major groups of specialties	Number of seamen			Change (%)		Percentage (%)		
	20/9/2012	20/9/2014	20/9/2016	2014/2012	2016/2014	20/9/2012	20/9/2014	20/9/2016
<b>Seamen employed on Greek and Greek-owned merchant ships</b>	<b>22,880</b>	<b>22,925</b>	<b>21,440</b>	<b>0.2</b>	<b>-6.5</b>	<b>100</b>	<b>100</b>	<b>100</b>
Senior personnel	7,357	7,452	6,987	1.3	-6.2	32.2	32.5	32.6
Lower personnel	13,955	13,700	12,855	-1.8	-6.2	61	59.8	60.0
Cadets, medical personnel	1,510	1,680	1,535	11.3	-8.6	6.6	7.3	7.2
Personnel with no specialty	58	93	63	60.3	-32.3	0.3	0.4	0.3
<b>Seamen employed on Greek merchant ships</b>	<b>21,582</b>	<b>21,315</b>	<b>20,666</b>	<b>-1.2</b>	<b>-3.0</b>	<b>100</b>	<b>100</b>	<b>100</b>
Masters and senior personnel	6,893	6,933	6,766	0.6	-2.4	31.9	32.5	32.7
Lower personnel	13,216	12,769	12,366	-3.4	-3.2	61.2	59.9	59.8
Cadets, medical personnel	1,418	1,585	1,507	11.8	-4.9	6.6	7.4	7.3
Personnel with no specialty	55	28	27	-49.1	-3.6	0.3	0.1	0.1
<b>Seamen employed on Greek-owned merchant ships</b>	<b>1,298</b>	<b>1,610</b>	<b>774</b>	<b>24</b>	<b>-51.9</b>	<b>100</b>	<b>100</b>	<b>100</b>
Masters and senior personnel	464	519	221	11.9	-57.4	35.7	32.2	28.6
Lower personnel	739	931	489	26	-47.5	56.9	57.8	63.2
Cadets, medical personnel	92	95	28	3.3	-70.5	7.1	5.9	3.6
Personnel with no specialty	3	65	36	2,066.7	-44.6	0.2	4.0	4.7

**Graph 3: Greek and foreign seamen employed on Greek merchant ships of 100 GRT and over, in census day (20-9-2016)**



**Graph 4: Seamen employed on merchant ships of 100 GRT and over, under Greek flag or Greek-owned under foreign flag, contracted with the Seamen's Pension Fund, by major groups of specialties, in census day (20-9-2016)**



## EXPLANATORY NOTES

<b>Ships and Crew Census</b>	The Ships and Crew Census (Seafaring Labor Force), is conducted every 2 years on the 20 <sup>th</sup> of September of the reference year. The aim of the census is to measure the seafaring labour force of the Greek merchant fleet, as well as to collect data referring to the general characteristics of the employed seamen. Additionally, the Statistical Register of Greek Merchant Ships maintained by ELSTAT for statistical purposes is updated on the basis of the census data.
<b>Legal framework</b>	The census is conducted in the framework of the provisions laid down by the Joint Decision 6880/Γ4-836/29-7-2016 (ΦΕΚ 2395 Β'/03-08-2016) signed by the Minister of Maritime and Aegean Sea and the President of ELSTAT.
<b>Reference Period</b>	The results of the census refer to the <u>20<sup>th</sup> of September, 2016</u> .
<b>Coverage</b>	The census is conducted on a) all the merchant ships 100 GRT and over, irrespective of their condition – active or laid up and b) all the seamen employed on ships at the day of the census even if some of them may not been employed anymore. On the contrary, the census doesn't cover the seamen that have been employed in the ships after the day of the census.
<b>Definitions</b>	<p><b>Merchant ship:</b> Seagoing self-propelled vessel, of at least ten NRT, designed for the carriage of goods, transport of passengers, for fishing, towing or especially fitted out for other maritime activities.</p> <p><b>Greek merchant fleet:</b> The total number of the merchant ships registered in Greece, which belong to natural or legal persons residing on the Greek territory. The Greek flag carried by these ships means that all their maritime activities (subsidies for ship building, cargo limitations and other tax provisions) are governed by commercial and economic rules which are laid down by the respective Greek authorities.</p> <p><b>Gross Register Tonnage (GRT):</b> unit of measurement of the total volume in cubic feet of the spaces within the hull and of the enclosed spaces above the deck which are available for carrying goods, food, passengers and crew. It equals to the volume of 100 cubic feet or 2.83 m3.</p> <p><b>Senior Personnel:</b> (Masters A', B', C', Engineers A', B', C radio officers A-B', pay masters A-B' and chief caterers).</p> <p><b>Cadets Personnel:</b> (cadet deck officers, engineers, paymasters).</p> <p><b>Health Care Personnel</b> (doctors, medicines, nurses and other)</p> <p><b>Lower Personnel</b> (assistant caterers, captains A', B', C', boatswains, pumpmen, sailors ship's boys, motor-drivers A', B', greasers, wipers and trimmers, motormen, chief stewards, stewards A', B', assistants, chief cooks, cooks A', B', C assistant cooks, electricians, tug captains trainers of apprentices for the deck, engines and other specialties.</p> <p><b>Personnel with no maritime specialty:</b> Laid up ships keepers and other personnel with no specialty.</p>
<b>Methodology</b>	<p>For the census the statistical unit is the merchant ship of 100 GRT and over. The census was conducted on the basis of the Ships' Register provided by the National Seamen Pension Fund. The census data refer to the total of the merchant ships, of 100 GRT and over, including their crew, and they are under the Greek flag or they are Greek-owned ships under foreign flag contracted with the Seamen' s Pension Fund. The census data will be used further for the update of the Statistical Register of Greek Merchant Ships.</p> <p>In the framework of the census, merchant ships are classified as follows: a) cargo ships, b) tankers, c) passengers and tourist ships, d) miscellaneous i.e. tug ships, lifeboats, fishing ships, etc.</p> <p>Data are collected on the basis of a special questionnaire compiled by ELSTAT with the collaboration of the Division of Maritime Labour, as well as with other competent Divisions of the Ministry of Shipping and Island Policy. The collected data refer to the information related to the legal ownership of the ship, as well as to the characteristics of the ship which are derived mainly either from the ships' official naval documents or from the official crew lists. The person responsible for the provision of the statistical information is: a) the Master of the ship in the case that the ship is active at the reference day, b) the Greek Port Authorities, as regards the ships that during the reference day are laid up within their competence region c) the Greek Consular Authorities at the foreign ports where the ship will be at the day of the census.</p>
<b>References</b>	Further information (tables, graphs) concerning the Ship and Crew Census can be found on the webpage of ELSTAT ( <a href="http://www.statistics.gr">www.statistics.gr</a> ), at the link: «Industry, Trade, Services, Transport > Transport > Shipping > Seafaring Labour Force > Ships and Crews (Census) ».