



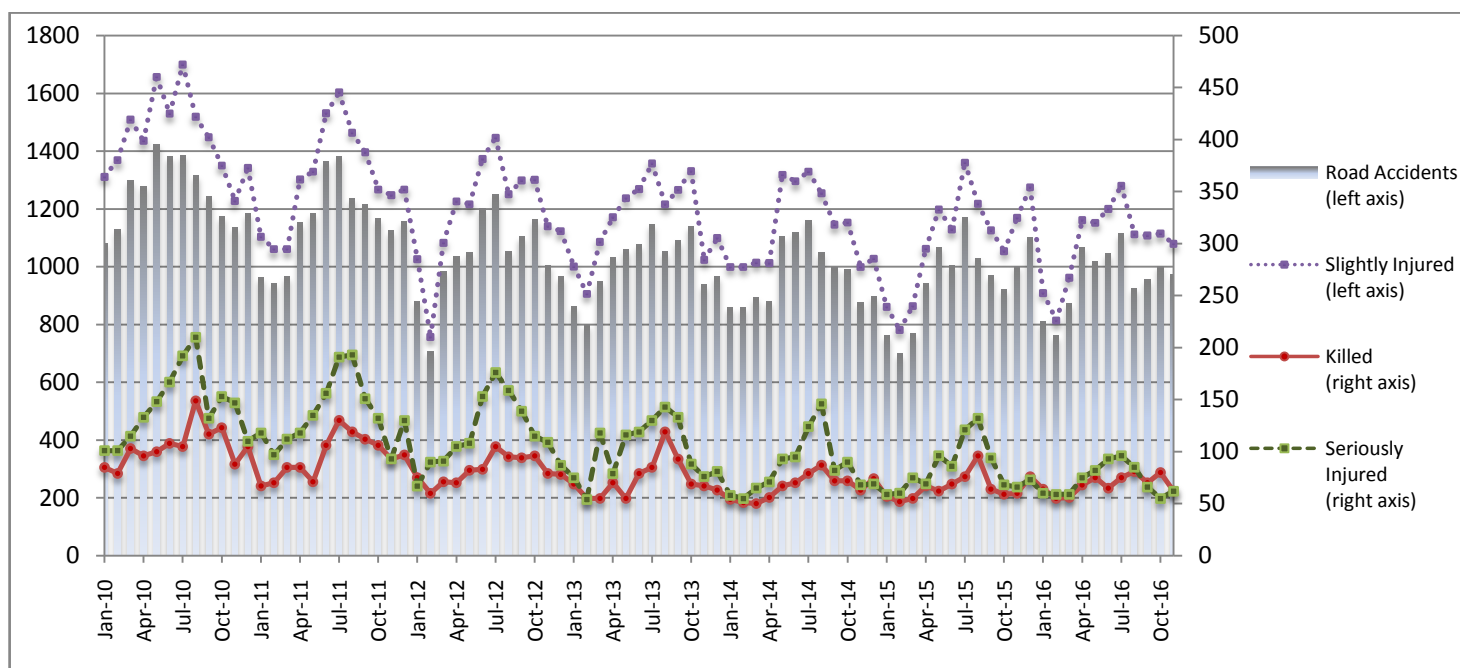
PRESS RELEASE

ROAD ACCIDENTS: November 2016

The Hellenic Statistical Authority (ELSTAT) announces data on Road Accidents for November 2016. In particular, the road traffic accidents which occurred in Greece, resulting in injured or killed persons, decreased by 3.0% in comparison with the corresponding month of 2015 (972 road accidents in November 2016 against 1,002 road accidents in November 2015).

Among the casualties of the injury-causing accidents that occurred in November 2016, 62 persons were killed, 62 persons were seriously injured and 1,079 persons were slightly injured. In contrast, in November 2015 the corresponding figures were: 60 persons killed, 66 seriously injured and 1,169 slightly injured. Therefore, road accident casualties in November 2016 recorded an increase by 3.3% for persons killed, a decrease by 6.1% for persons seriously injured and a decrease by 7.7% for persons slightly injured.

**Graph 1: Road Traffic Accidents and casualties,
January 2010-November 2016**



Provisional data: Feb 16 – Nov 16

Information:

Social Statistics Division

Justice and Public Order Statistics Section

D. Athanasopoulou

Tel: 213 1352767

Fax : 213 1352764

e-mail: d.athanasopoulou@statistics.gr

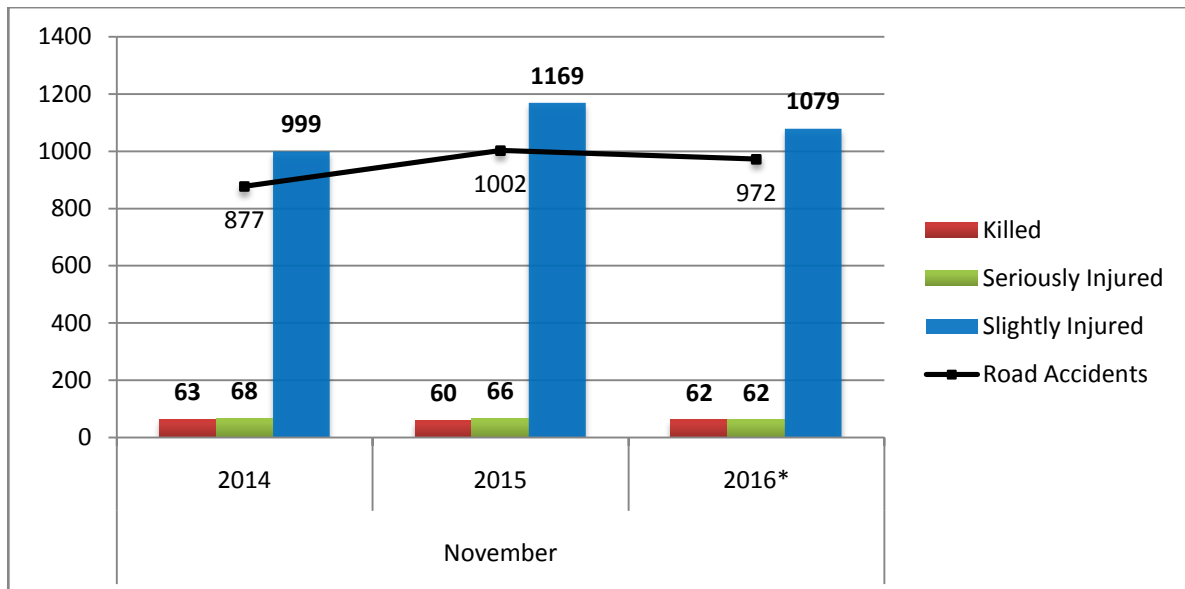
Table 1: Road Traffic Accidents and casualties, 2014-2016

	November				
	2014	2015	2015/2014 (%)	2016*	2016*/2015 (%)
Road Accidents	877	1,002	14.3%	972	-3.0%
Killed	63	60	-4.8%	62	3.3%
Total Injured	1,067	1,235	15.7%	1,141	-7.6%
Seriously Injured	68	66	-2.9%	62	-6.1%
Slightly Injured	999	1,169	17.0%	1,079	-7.7%

* Provisional data

Note: For year 2015 data are not available for department of Zakynthos due to non-response.

Graph 2: Road Traffic Accidents and casualties, 2014-2016



* Provisional data

Note: For year 2015 data are not available for department of Zakynthos due to non-response.

Table 2:
Road Traffic Accidents and casualties, by region and department,
November 2015 / 2016

Region and Department	Road Accidents			Killed			Seriously Injured			Slightly Injured		
	2015	2016*	%	2015	2016*	%	2015	2016*	%	2015	2016*	%
Greece Total	1,002	972	-3.0%	60	62	3.3%	66	62	-6.1%	1,169	1,079	-7.7%
Anatoliki Macedonia, Thraki (East Macedonia and Thrace)	33	36	9.1%	4	1	-75.0%	6	5	-16.7%	35	42	20.0%
Drama	5	6	20.0%	1	0		2	2		8	4	
Evros	5	9	80.0%	0	0		1	0		6	12	
Kavala	8	8	0.0%	1	0		1	0		7	10	
Xanthi	10	7	-30.0%	2	1		1	2		8	11	
Rodopi	5	6	20.0%	0	0		1	1		6	5	
Kentriki Macedonia (Central Macedonia)	228	211	-7.5%	9	7	-22.2%	5	6	20.0%	285	246	-13.7%
Imathia	2	4	100.0%	0	0		0	0		4	4	
Thessaloniki	201	187	-7.0%	7	4		2	6		248	218	
Kilkis	3	4	33.3%	0	0		0	0		5	7	
Pella	5	6	20.0%	0	2		1	0		10	4	
Pierria	4	4	0.0%	1	0		2	0		4	6	
Serres	6	3	-50.0%	1	1		0	0		7	3	
Chalkidiki	7	3	-57.1%	0	0		0	0		7	4	
Dytiki Macedonia (West Macedonia)	8	6	-25.0%	2	2	0.0%	3	0	-100.0%	7	7	0.0%
Grevena	0	2	-	0	2		0	0		0	3	
Kastoria	2	0	-100.0%	1	0		1	0		0	0	
Kozani	5	4	-20.0%	1	0		2	0		5	4	
Florina	1	0	-100.0%	0	0		0	0		2	0	
Ipeiros (Epirus)	11	4	-63.6%	3	2	-33.3%	1	0	-100.0%	10	4	-60.0%
Arta	2	1	-50.0%	1	0		1	0		0	1	
Thesprotia	5	1	-80.0%	1	1		0	0		4	0	
Ioannina	2	1	-50.0%	0	0		0	0		3	1	
Preveza	2	1	-50.0%	1	1		0	0		3	2	
Thessalia (Thessaly)	18	19	5.6%	1	4	300.0%	2	3	50.0%	22	23	4.5%
Karditsa	7	6	-14.3%	0	0		0	1		7	8	
Larisa	7	7	0.0%	0	1		1	1		11	8	
Magnisia	2	5	150.0%	0	2		0	1		2	7	
Trikala	2	1	-50.0%	1	1		1	0		2	0	
Ionioi Nisoi (Ionian Islands)	3	7	133.3%	0	1	-	1	1	0.0%	3	6	100.0%
Zakynthos **	0	2	-	0	0		0	0		0	2	
Kerkyra	0	2	-	0	0		0	0		0	2	
Kefallinia	2	1	-50.0%	0	0		1	0		2	2	
Lefkada	1	2	100.0%	0	1		0	1		1	0	

* Provisional data

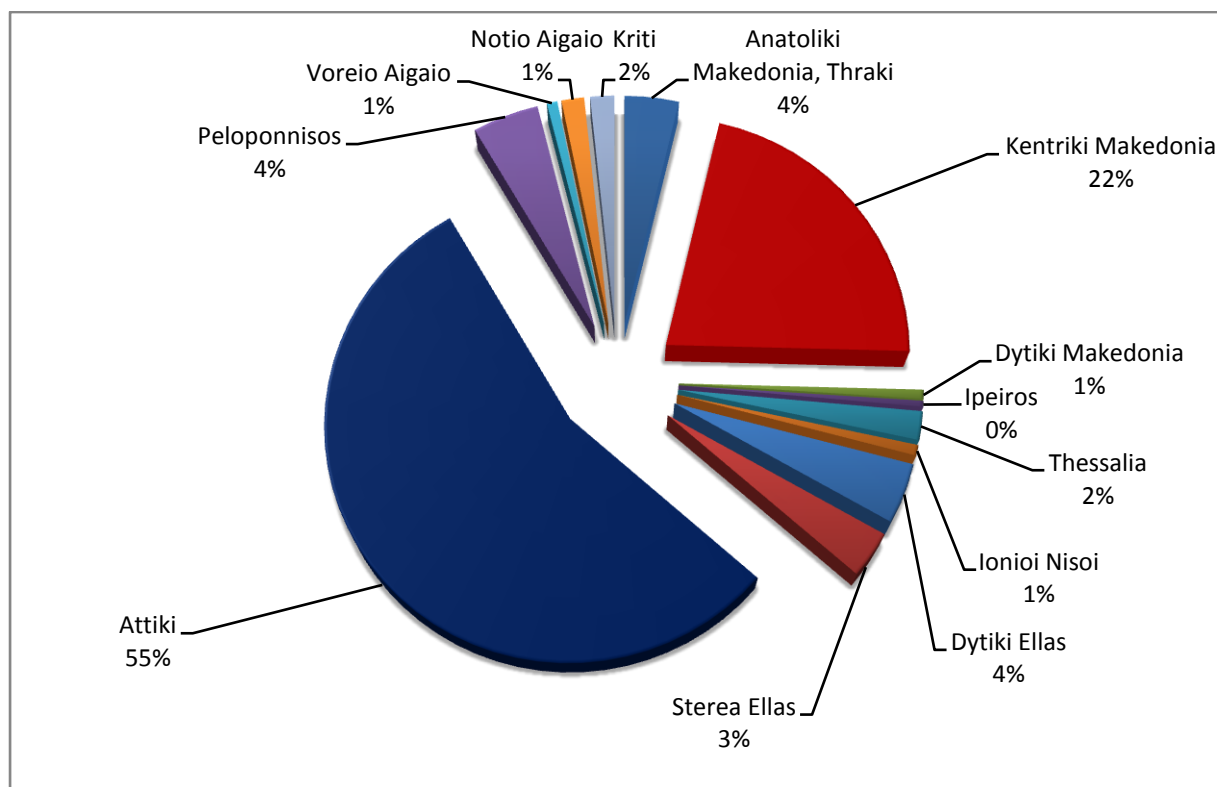
** Data not available due to non-response

Table 2 (Continued):
Road Traffic Accidents and casualties, by region and department,
November 2015 / 2016

Region and Department	Road Accidents			Killed			Seriously Injured			Slightly Injured		
	2015	2016*	%	2015	2016*	%	2015	2016*	%	2015	2016*	%
Dytiki Ellas (West Greece)	48	40	-16.7%	5	5	0.0%	5	2	-60.0%	53	47	-11.3%
Aitolia. Akarnania	14	14	0.0%	1	1		1	1		14	15	
Achaia	19	22	15.8%	2	3		0	1		24	28	
Ileia	15	4	-73.3%	2	1		4	0		15	4	
Stereia Ellas	32	31	-3.1%	6	4	-33.3%	4	5	25.0%	38	40	5.3%
Voiotia	6	4	-33.3%	1	1		1	1		10	4	
Evvoia	13	13	0.0%	1	3		1	2		17	14	
Evrytania	2	0	-100.0%	1	0		0	0		1	0	
Fthiotida	9	11	22.2%	2	0		2	2		9	17	
Fokida	2	3	50.0%	1	0		0	0		1	5	
Attiki (Attica)	546	536	-1.8%	19	15	-21.1%	15	26	73.3%	647	594	-8.2%
Peloponnisos (Peloponnese)	49	44	-10.2%	6	6	0.0%	13	8	-38.5%	50	43	-14.0%
Argolida	7	5	-28.6%	1	1		1	1		10	3	
Arkadia	8	7	-12.5%	1	1		0	1		10	8	
Korinthia	25	14	-44.0%	2	1		9	2		24	17	
Lakonia	6	9	50.0%	1	0		3	3		4	7	
Messinia	3	9	200.0%	1	3		0	1		2	8	
Voreio Aigaio (North Aegean)	6	7	16.7%	0	2	-	2	0	-100.0%	6	6	0.0%
Lesvos	4	4	0.0%	0	1		2	0		4	4	
Samos	1	2	100.0%	0	1		0	0		1	1	
Chios	1	1	0.0%	0	0		0	0		1	1	
Notio Aigaio (South Aegean)	14	15	7.1%	4	4	0.0%	7	2	-71.4%	8	11	37.5%
Dodekanisos	11	8	-27.3%	4	3		4	1		5	5	
Kyklades	3	7	133.3%	0	1		3	1		3	6	
Kriti (Crete)	6	16	166.7%	1	9	800.0%	2	4	100.0%	5	10	100.0%
Irakleio	1	5	400.0%	0	3		1	2		1	4	
Lasithi	0	3	-	0	1		0	2		0	1	
Rethymno	1	3	200.0%	0	3		0	0		1	2	
Chania	4	5	25.0%	1	2		1	0		3	3	

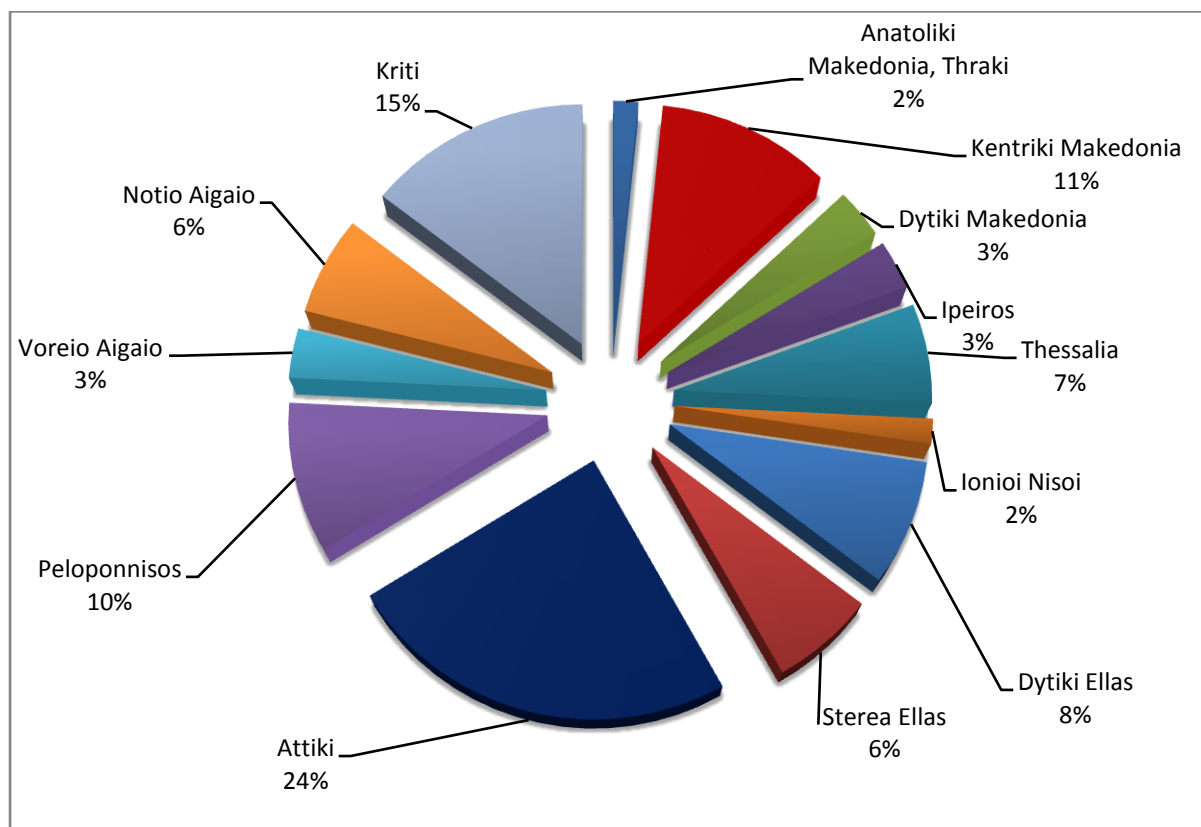
* Provisional data

**Graph 3: Road Traffic Accidents by region
November 2016 ***



* Provisional data

**Graph 4: Killed by region
November 2016 ***



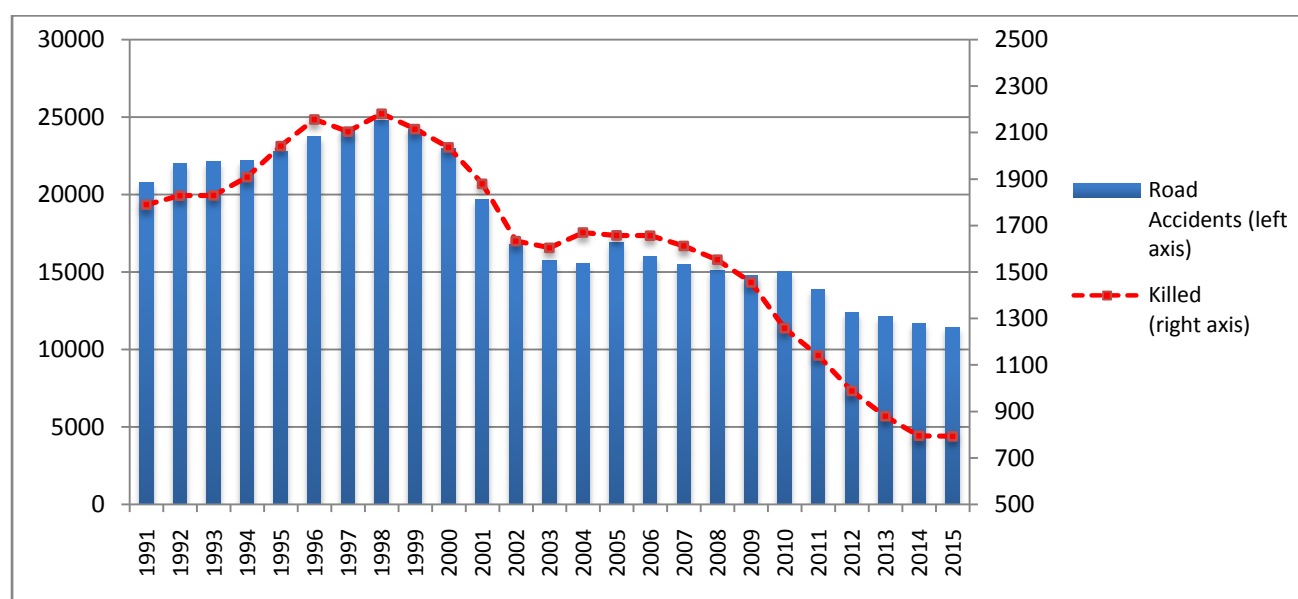
* Provisional data

Table 3: Road Traffic Accidents and casualties for the period January-November 2014, 2015 and 2016

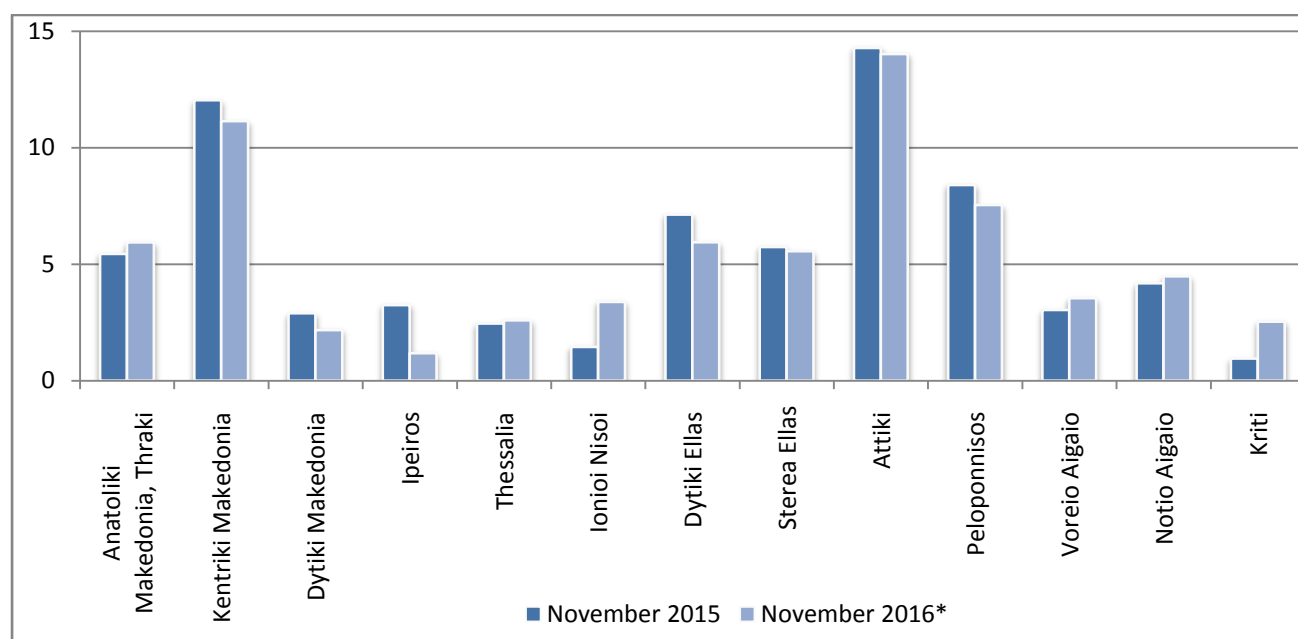
	2014		2015		2016 *
	January - November	Total	January - November	Total	January - November
Road Accidents	10,793	11,690	10,339	11,440	10,543
Annual Change (%) :			-4.2%	-2.1%	2.0%
Killed	721	795	717	793	751
Annual Change (%) :			-0.6%	-0.3%	4.7%

* Provisional data

Graph 5: Total Road Traffic Accidents and fatalities, 1991-2015

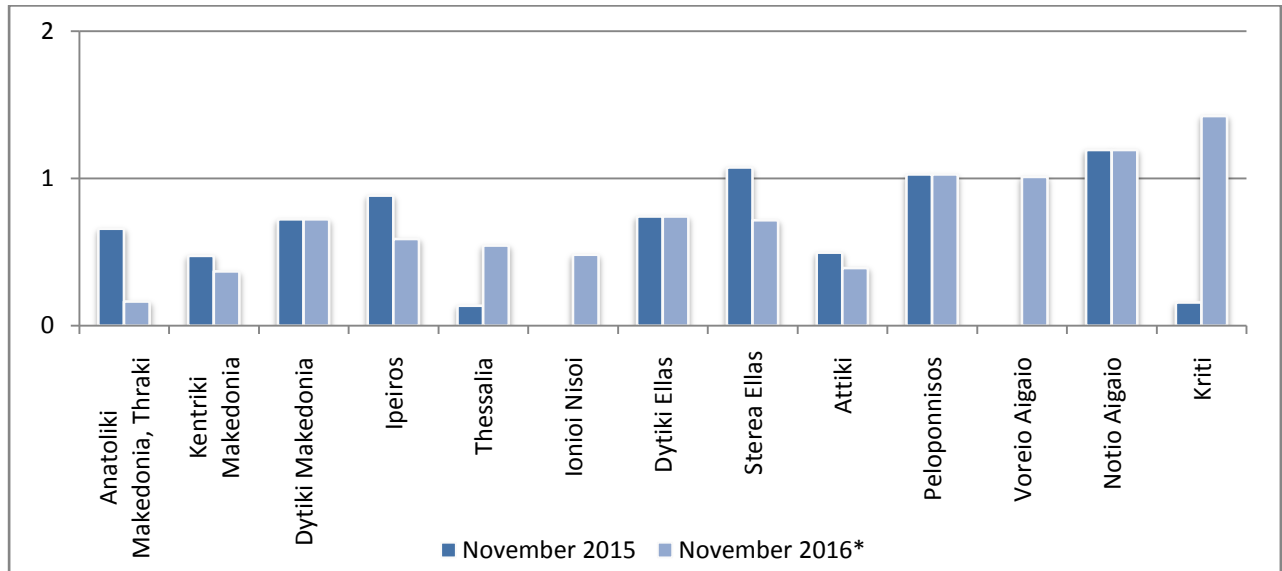


Graph 6: Road accidents per 100,000 inhabitants

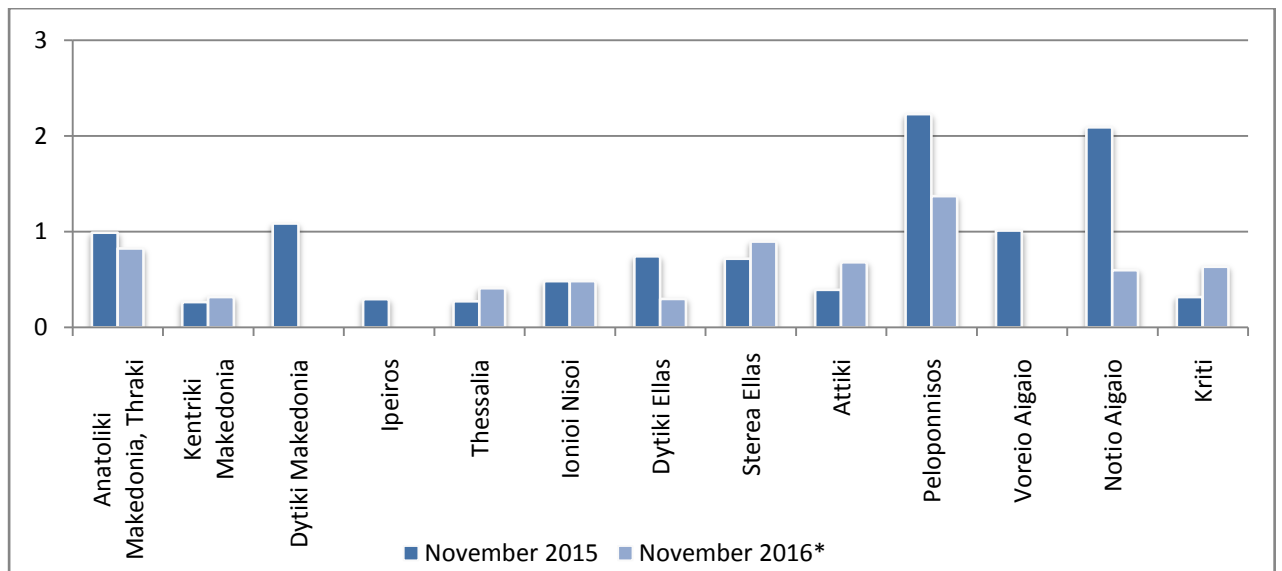


* Provisional data

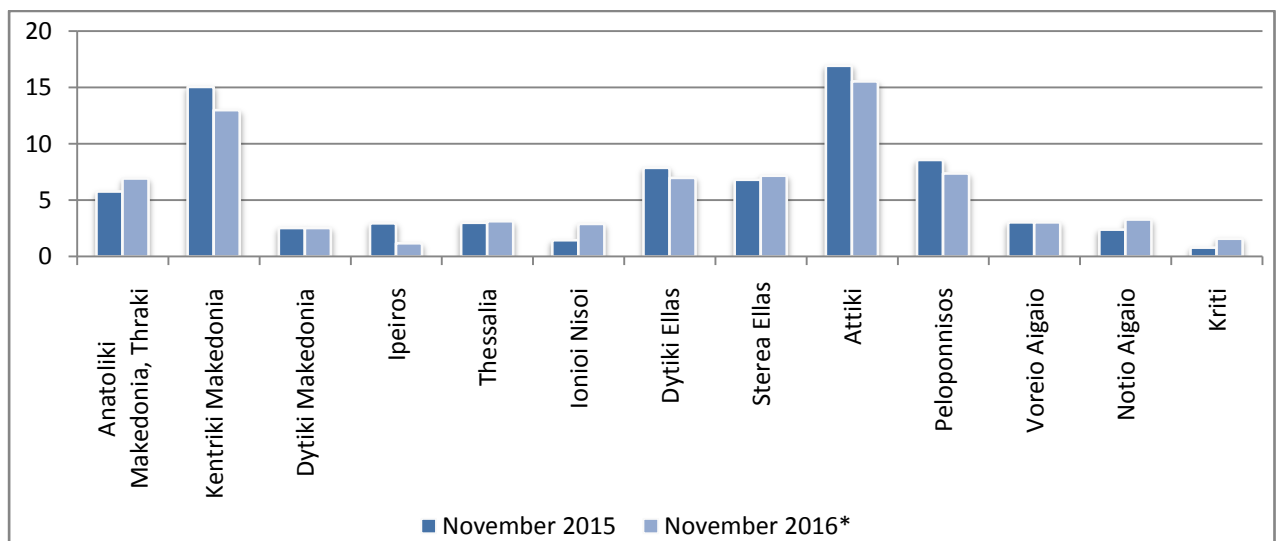
Graph 7: Persons killed per 100,000 inhabitants



Graph 8: Persons seriously injured per 100,000 inhabitants



Graph 9: Persons slightly injured per 100,000 inhabitants



* Provisional data

Explanatory Notes

Survey on Road Accidents	<p>The survey on road accidents is conducted on a monthly basis and it records, for each department of Greece and for each month separately, the number of accidents by fatal and/or non-fatal accident, as well as the number of persons injured by categories (drivers, passengers, pedestrians). On a yearly basis, road accidents are further analyzed.</p> <p>The competent agencies for filling in/collecting the questionnaires on road accidents are the local Police Authorities and the local Port Authorities of Greece.</p> <p>The lower level of analysis for the place where an injury road accident occurred is the settlement (oikismos), which is described by a 8-digit geographic code. Data are collected on a monthly basis.</p> <p>The main variables are the following: place of accident, kind of road, casualties, conditions of road surface and type of road.</p>
Legal basis	<p>The Survey on Road Traffic Accidents is governed by Council Decision 93/704 of the European Community.</p>
Reference Period	<p>Monthly.</p>
Availability of Data	<p>Provisional data are available 2 months after the reference month.</p> <p>Final data are available 1 year after the reference year.</p>
National Definitions	<p>Road accident (injury accident): Any accident involving at least one road motor vehicle in motion on a public road or square to which the public has access (excluding yards, industrial sites or vehicle depot of public transport enterprises), resulting in at least one injured or killed person. Accidents with only material damages are not included.</p> <p>Person killed: Any person killed immediately or dying within 30 days as a result of an injury accident (This national definition applies since 01.01.1996)</p> <p>Person injured: Any person who sustained an injury as result of an injury accident, and who normally needs medical treatment.</p> <p>Seriously injured: Any person who sustained an injury as result of an injury accident, such as brain damages, mutilation, multiple injuries, which may result in lack of awareness or which are life-threatening.</p> <p>Slightly injured: Any person injured who sustained minor and not life-threatening injuries.</p> <p>Vehicle: Include motor vehicles, trolleybuses, motorcycles, bicycles, motorbikes, agricultural and road making machines, animal and hand-drawn vehicles. Railway vehicles are excluded, unless the road accident involves at least one of the aforementioned types of vehicles and therefore, railway vehicles are considered vehicles.</p>
Methodology	<p>The questionnaires of the survey are filled in by the local Police Authorities and the local Port Authorities as well.</p>
References	<p>More information about road accidents is available on ELSTAT's website and more specifically at the link: www.statistics.gr > Population & Social Conditions > Accidents > Road Traffic Accidents.</p> <p>It should be noted that previous press releases and time series are available on ELSTAT's website: www.statistics.gr</p>