



PRESS RELEASE

SURVEYS ON SECONDARY GENERAL EDUCATION (LOWER AND UPPER SECONDARY SCHOOLS) END OF SCHOOL YEAR 2017/2018

The Hellenic Statistical Authority (ELSTAT) announces data on Secondary General Education (lower and upper secondary schools) deriving from the relevant surveys for the end of the school year 2017/2018. In the first part of this press release, data on lower and upper secondary education schools are presented and the second part includes data on the Ecclesiastical Secondary Education Schools and Second Chance Schools, as branches of the Secondary General Education.

GENERAL SECONDARY EDUCATION (LOWER AND UPPER SECONDARY SCHOOLS)

The data collected from the surveys on Secondary Education, pertaining to lower and upper secondary education schools can be summarized as follows:

- a) In lower secondary schools, **school units** in the school year 2017/2018 amounted to 1,823 while in 2016/2017 also amounted 1,823. In upper secondary schools, **school units** in the school year 2017/2018 amounted to 1,345 compared with 1,348 in 2016/17 (Tables 2 and 4, respectively);
- b) **Teaching staff** in the school year 2017/2018 compared with 2016/2017 increased from 38,411 to 38,706 in lower secondary schools and from 23,822 to 23,970 in upper secondary schools (Tables 2 and 4, respectively);
- c) **The number of pupils enrolled** in the school year 2017/2018, compared with the corresponding number in the school year 2016/2017, decreased from 313,130 to 312,604 in lower secondary schools and increased from 244,386 to 245,811 in upper secondary schools (Tables 3 and 5, respectively);
- d) **The number of graduates** in the school year 2017/2018, compared with the corresponding number in the school year 2016/2017, decreased from 100,980 to 99,997 in lower secondary schools and increased from 76,900 to 79,887 in upper secondary schools (Tables 3 and 5, respectively);
- e) **The ratio of teaching staff to pupils** in lower secondary schools in the school year 2017/2018 is 1 teacher for 8.1 students in comparison to 1 teacher for 8.2 students in the school year 2016/2017, while it remained unchanged in upper secondary schools in school years 2016/2017 and 2017/2018 (1 teacher for 10.3 students) (Tables 2,3,4 and 5);
- f) The **Region of Attiki** accounted for the largest share of pupils enrolled in Secondary Education in Greece, with 34.4% in lower secondary schools and 35.9% in upper secondary schools (Graphs 2 and 3 respectively).

Information on methodological issues:

Division of Sectoral Statistics
Section of Statistics on Education & Sports
Head of the Section: Antonios Kritikos
Tel: +30 213 135 2134, 2786
Fax: +30 213 135 2780
e-mail: a.kritikos@statistics.gr

Information for data provision:

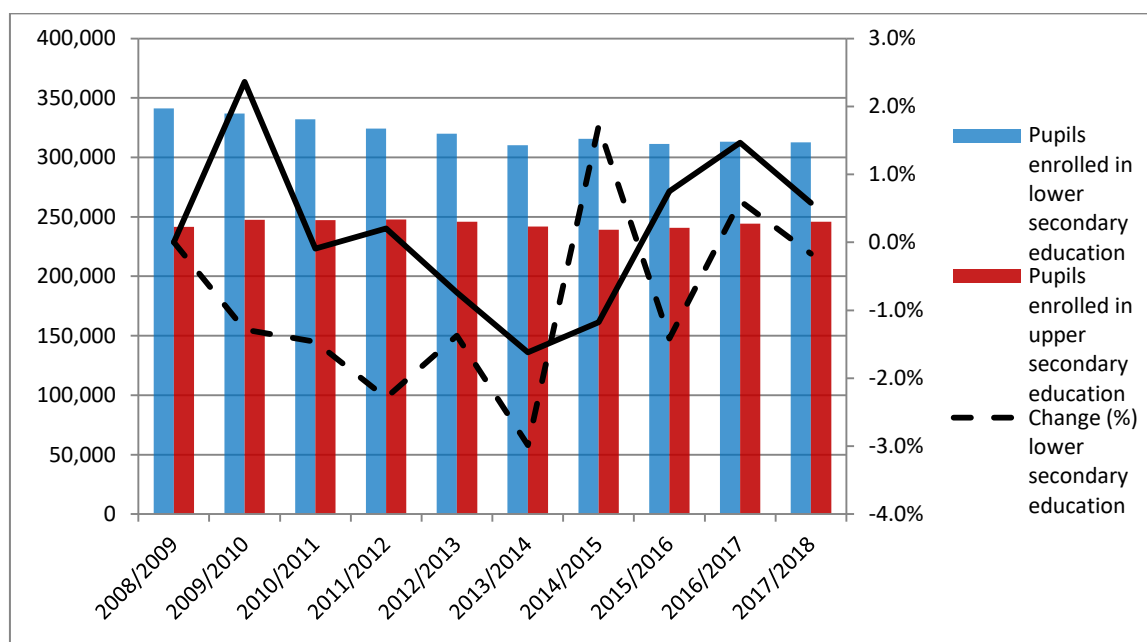
Tel. +30 213 135 2022, 2310
Email. Data.dissem@statistics.gr

More specifically, Table 1 and Graph 1 depict the evolution of pupil population in lower and upper secondary education during the period 2008/2009 - 2017/2018.

Table 1
Evolution of pupil population in Secondary Education 2008/09 – 2017/18

School year	Pupils enrolled ¹	
	Lower secondary education schools	Upper secondary education schools
2008/2009	341,315	241,726
2009/2010	336,938	247,441
2010/2011	332,005	247,209
2011/2012	324,402	247,717
2012/2013	319,950	245,892
2013/2014	310,389	241,905
2014/2015	315,702	239,055
2015/2016	311,236	240,852
2016/2017	313,130	244,386
2017/2018	312,604	245,811

Graph 1
Evolution of pupil population in Secondary Education 2008/09 – 2017/18



¹ Ecclesiastical secondary education schools and Second Chance schools are not included.

A. LOWER SECONDARY SCHOOLS

Tables 2 and 3 present data on the number of school units, teaching staff, pupils enrolled and graduates (Ecclesiastical Schools and Second Chance Schools are not included).

Table 2. School units and teaching staff ² (Lower secondary education)

<i>By Type of school unit</i>						
School units	Number of school units			Teaching staff		
	2016/17	2017/18	Change (%)	2016/17	2017/18	Change (%)
Public	1,725	1,724	-0.1	36,237	36,415	0.5
Private	98	99	1.0	2,174	2,291	5.4
TOTAL	1,823	1,823	0.0	38,411	38,706	0.8
<i>By Region</i>						
Region (NUTS 2)	Number of school units			Teaching staff		
	2016/17	2017/18	Change (%)	2016/17	2017/18	Change (%)
Anatoliki Makedonia, Thraki	101	98	-3.0	2,088	2,112	1.1
Kentriki Makedonia	297	294	-1.0	6,348	6,269	-1.2
Dytiki Makedonia	67	67	0.0	1,149	1,133	-1.4
Thessalia	125	125	0.0	2,884	2,874	-0.3
Ipeiros	84	84	0.0	1,376	1,373	-0.2
Ionia Nisia	50	50	0.0	1,091	1,099	0.7
Dytiki Ellada	143	143	0.0	2,708	2,672	-1.3
Stereia Ellada	118	118	0.0	1,989	2,031	2.1
Peloponnisos	112	112	0.0	2,060	2,055	-0.2
Attiki	478	484	1.3	11,632	11,903	2.3
Voreio Aigaio	53	53	0.0	993	982	-1.1
Notio Aigaio	86	86	0.0	1,609	1,671	3.9
Kriti	109	109	0.0	2,484	2,532	1.9
TOTAL	1,823	1,823	0.0	38,411	38,706	0.8

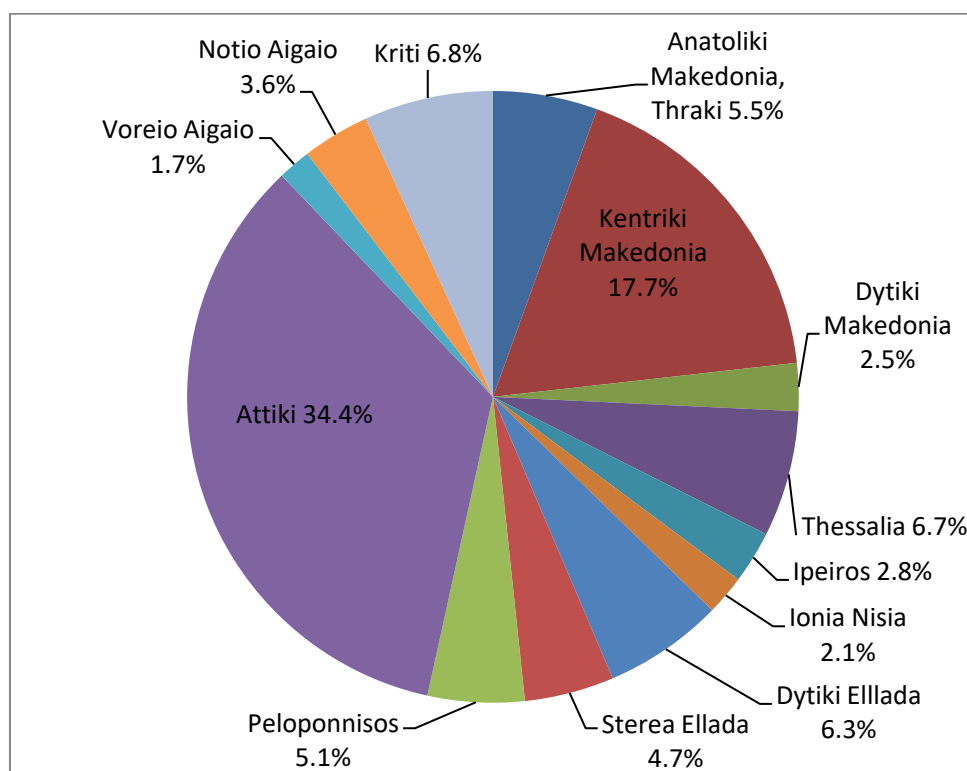
² Absent teachers are also included.

Absent teachers are the teachers with a fixed post in the school unit, who are absent for more than 20 days (due to illness, training, maternity leave, etc) and their replacement is pending, as well as the teachers who are seconded to other administrative posts of the Ministry of Education and Religious Affairs or elsewhere.

**Table 3. Pupils enrolled and graduates by type of school unit and NUTS 2 Region
(Lower Secondary Schools)**

<i>By Type of School Unit</i>						
School units	Pupils enrolled			Graduates		
	2016/17	2017/18	Change (%)	2016/17	2017/18	Change (%)
Public	298,287	297,293	-0.3	96,269	95,130	-1.2
Private	14,843	15,311	3.2	4,711	4,867	3.3
TOTAL	313,130	312,604	-0.2	100,980	99,997	-1.0
<i>By Region</i>						
Region (NUTS 2)	Pupils enrolled			Graduates		
	2016/17	2017/18	Change (%)	2016/17	2017/18	Change (%)
Anatoliki Makedonia, Thraki	17,580	17,297	-1.6	5,382	5,322	-1.1
Kentriki Makedonia	55,834	55,295	-1.0	18,286	17,773	-2.8
Dytiki Makedonia	8,069	7,901	-2.1	2,696	2,654	-1.6
Thessalia	20,991	20,831	-0.8	6,813	6,566	-3.6
Ipeiros	8,584	8,662	0.9	2,815	2,716	-3.5
Ionia Nisia	6,410	6,560	2.3	1,988	2,056	3.4
Dytiki Ellada	20,081	19,726	-1.8	6,470	6,342	-2.0
Stereia Ellada	14,804	14,818	0.1	4,792	4,863	1.5
Peloponnisos	15,818	15,981	1.0	5,027	5,086	1.2
Attiki	107,288	107,609	0.3	34,769	34,438	-1.0
Voreio Aigaio	5,514	5,463	-0.9	1,805	1,758	-2.6
Notio Aigaio	10,963	11,109	1.3	3,500	3,614	3.3
Kriti	21,194	21,352	0.7	6,637	6,809	2.6
TOTAL	313,130	312,604	-0.2	100,980	99,997	-1.0

**Graph 2. Percentage distribution of pupils enrolled in lower secondary schools,
by NUTS 2 Region, school year 2017/2018**



B. UPPER SECONDARY SCHOOLS

Tables 4 and 5 present data on the number of school units, teaching staff, pupils enrolled and graduates (Ecclesiastical Schools are not included).

Table 4. School units and teaching staff ³ (Upper secondary schools)

<i>By Type of School Units</i>						
School units	Number of school units			Teaching staff		
	2016/17	2017/18	Change (%)	2016/17	2017/18	Change (%)
Public	1,255	1,253	-0.2	22,013	22,085	0.3
Private	93	92	-1.1	1,809	1,885	4.2
TOTAL	1,348	1,345	-0.2	23,822	23,970	0.6
<i>By Region</i>						
Region (NUTS 2)	Number of school units			Teaching staff		
	2016/17	2017/18	Change (%)	2016/17	2017/18	Change (%)
Anatoliki Makedonia, Thraki	64	63	-1.6	1,090	1,072	-1.7
Kentriki Makedonia	213	211	-0.9	4,199	4,148	-1.2
Dytiki Makedonia	36	36	0.0	665	667	0.3
Thessalia	98	98	0.0	1,549	1,554	0.3
Ipeiros	52	52	0.0	841	846	0.6
Ionia Nisia	36	36	0.0	502	504	0.4
Dytiki Ellada	99	99	0.0	1,528	1,531	0.2
Stereia Ellada	92	92	0.0	1,070	1,058	-1.1
Peloponnisos	91	89	-2.2	1,269	1,260	-0.7
Attiki	379	382	0.8	8,495	8,660	1.9
Voreio Aigaio	42	42	0.0	524	533	1.7
Notio Aigaio	68	67	-1.5	649	654	0.8
Kriti	78	78	0.0	1,441	1,483	2.9
TOTAL	1,348	1,345	-0.2	23,822	23,970	0.6

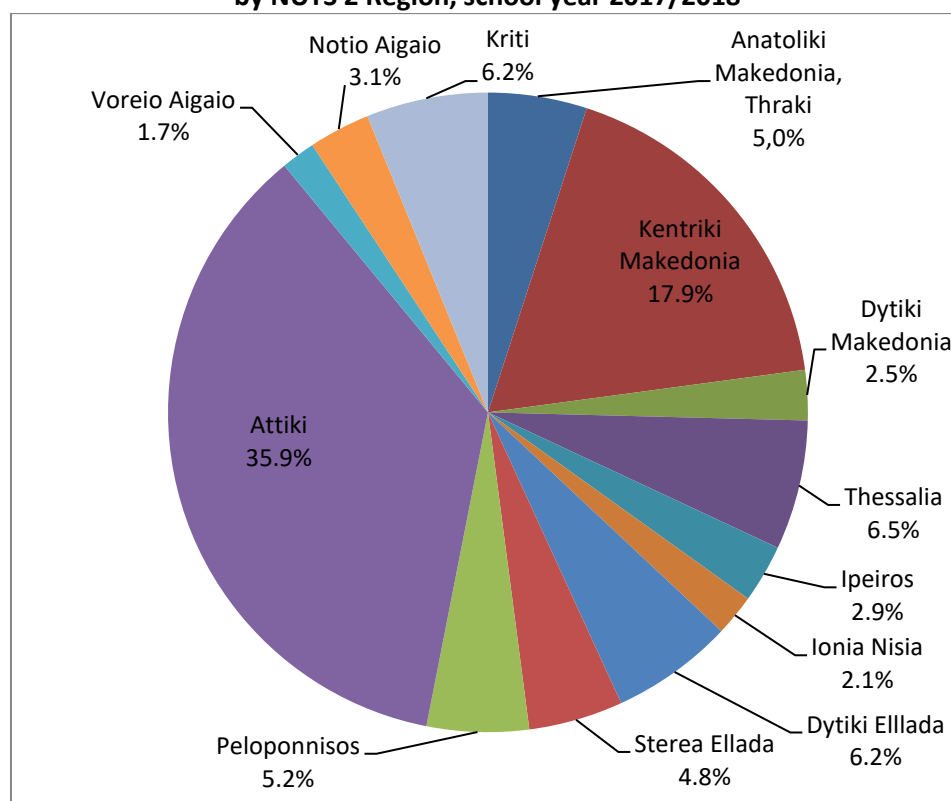
³ Absent teachers are also included.

Absent teachers are the teachers with a fixed post in the school unit, who are absent for more than 20 days (due to illness, training, maternity leave, etc) and their replacement is pending, as well as the teachers who are seconded to other administrative posts of the Ministry of Education and Religious Affairs or elsewhere.

**Table 5. Pupils enrolled and graduates by type of school unit and NUTS 2 Region
(Upper Secondary Schools)**

<i>By Type of School Unit</i>						
School units	Pupils enrolled			Graduates		
	2016/17	2017/18	Change (%)	2016/17	2017/18	Change (%)
Public	230,581	231,610	0.4	72,303	75,371	4.2
Private	13,805	14,201	2.9	4,597	4,516	-1.8
TOTAL	244,386	245,811	0.6	76,900	79,887	3.9
<i>By Region</i>						
Region (NUTS 2)	Pupils enrolled			Graduates		
	2016/17	2017/18	Change (%)	2016/17	2017/18	Change (%)
Anatoliki Makedonia, Thraki	12,332	12,292	-0.3	3,874	4,030	4.0
Kentriki Makedonia	44,040	43,930	-0.2	14,005	14,367	2.6
Dytiki Makedonia	6,403	6,225	-2.8	2,091	2,093	0.1
Thessalia	15,840	16,098	1.6	5,036	5,216	3.6
Ipeiros	7,389	7,219	-2.3	2,436	2,386	-2.1
Ionia Nisia	5,121	5,146	0.5	1,577	1,682	6.7
Dytiki Ellada	14,952	15,185	1.6	4,617	5,021	8.8
Stereia Ellada	11,665	11,729	0.5	3,598	3,787	5.3
Peloponnisos	12,644	12,668	0.2	3,870	4,193	8.3
Attiki	87,141	88,323	1.4	27,521	28,600	3.9
Voreio Aigaio	4,238	4,245	0.2	1,321	1,396	5.7
Notio Aigaio	7,528	7,625	1.3	2,334	2,331	-0.1
Kriti	15,093	15,126	0.2	4,620	4,785	3.6
TOTAL	244,386	245,811	0.6	76,900	79,887	3.9

**Graph 3. Percentage distribution of pupils enrolled in upper secondary schools
by NUTS 2 Region, school year 2017/2018**



ECCLESIASTICAL SECONDARY EDUCATION (LOWER AND UPPER SECONDARY SCHOOLS)

The ecclesiastical lower and upper secondary schools constitute a separate branch of the Secondary General Education. More specifically:

- a) **The number of school units** in ecclesiastical secondary education remained the same between school years 2016/2017 and 2017/2018 (Tables 6 and 7, respectively);
- b) **Teaching staff**, employed in both lower and upper secondary schools in the school year 2017/2018, compared with the school year 2016/2017, decreased by 5.3% (from 188 to 178 persons) (Table 8).
- c) **The number of pupils enrolled** in the school year 2017/2018, compared with the corresponding number in the school year 2016/2017, recorded a 9.6% decrease in ecclesiastical lower secondary schools and an 0.4% increase in ecclesiastical upper secondary schools (Tables 6 and 7, respectively);
- d) **The number of graduates** in the school year 2017/2018, compared with the corresponding number in the school year 2016/2017, recorded a 14.6% decrease in ecclesiastical lower secondary schools and a 4.6% decrease in ecclesiastical upper secondary schools (Tables 6 and 7, respectively);

Table 6. Ecclesiastical Lower Secondary Schools

Pupils enrolled/Graduates and number of school units			
	School Year		Change (%)
	2016/17	2017/18	
Pupils enrolled	240	217	-9.6
Graduates	82	70	-14.6
Number of School Units ⁴	7	7	0.0

Table 7. Ecclesiastical Upper Secondary Schools

Pupils enrolled/Graduates and number of school units			
	School Year		Change (%)
	2016/17	2017/18	
Pupils enrolled	523	525	0.4
Graduates	175	167	-4.6
Number of School Units ⁵	10	10	0.0

Table 8. Teaching Staff in Ecclesiastical Secondary Education

Teaching Staff			
	School Year		Change (%)
	2016/17	2017/18	
TOTAL	188	178	-5.3

⁴ All lower secondary schools include upper secondary school classes.

⁵ Lower secondary school units that host upper secondary school classes are included.

SECOND CHANCE SCHOOLS

Second Chance Schools are lower secondary education schools addressed to pupils that are over 18 years old. Data concerning the Second Chance Schools are presented for the school year 2017/2018 compared with school year 2016/2017 and the following can be observed:

- a) **School units** in the school year 2017/2018 compared with the school 2016/2017 increased by 1.1% (Table 9).
- b) In the school year 2017/2018 compared with the school 2016/2017, **teaching staff** increased by 1.4% (Table 10).
- c) **The number of pupils enrolled** in the school year 2017/2018, compared with the corresponding number in the school year 2016/2017, recorded a 5.1% increase (Table 11).
- d) **The number of foreign pupils** in the school year 2017/2018, compared with the school year 2016/2017, increased by 10.2% (table 12).
- e) **The number of pupils of the second grade that graduated** in the school year 2017/2018, compared with the corresponding number in the school year 2016/2017, recorded a 3.1% increase (table 13).

Table 9. Number of school units of Second Chance Schools by type

Type of school unit	Total number of school units			Of which:					
				Central Unit			Branches		
	2016/17	2017/18	Change %	2016/17	2017/18	Change %	2016/17	2017/18	Change %
TOTAL	90	91	1.1	65	67	3.1	25	24	-4.0
Day	10	11	10.0	8	10	25.0	2	1	-50.0
Afternoon	80	80	0.0	57	57	0.0	23	23	0.0

Table 10. Number of teaching staff of Second Chance Schools, by status and gender

Status of teaching staff	Total			Males			Females		
	2016/17	2017/18	Change %	2016/17	2017/18	Change %	2016/17	2017/18	Change %
TOTAL	874	886	1.4	344	362	5.2	530	524	-1.1
Principals	65	67	3.1	44	46	4.5	21	21	0.0
Vice Principals	65	63	-3.1	35	33	-5.7	30	30	0.0
Seconded permanent staff	214	248	15.9	95	122	28.4	119	126	5.9
Fixed-Term Contract staff	530	508	-4.2	170	161	-5.3	360	347	-3.6

Table 11. Number of pupils of Second Chance Schools by gender and grade

Grade	Total			Males			Females		
	2016/17	2017/18	Change %	2016/17	2017/18	Change %	2016/17	2017/18	Change %
TOTAL	5,169	5,432	5.1	3,023	3,196	5.7	2,146	2,236	4.2
Grade A	2,902	3,047	5.0	1,776	1,828	2.9	1,126	1,219	8.3
Grade B	2,267	2,385	5.2	1,247	1,368	9.7	1,020	1,017	-0.3

Table 12. Number of foreign pupils of Second Chance Schools by gender and citizenship

Citizenship	Total			Males			Females		
	2016/17	2017/18	Change %	2016/17	2017/18	Change %	2016/17	2017/18	Change %
TOTAL	953	1,050	10.2	711	787	10.7	242	263	8.7
EU Member State	177	173	-2.3	125	116	-7.2	52	57	9.6
Outside the EU	763	877	14.9	584	671	14.9	179	206	15.1
Unknown citizenship	13	0		2	0		11	0	

Table 13. Pupils of Second Chance Schools of the second grade that graduated, by gender and NUTS 2 Region

NUTS 2 Region	Total			Males			Females		
	2016/17	2017/18	Change %	2016/17	2017/18	Change %	2016/17	2017/18	Change %
TOTAL	1,795	1,851	3.1	912	1,005	10.2	883	846	-4.2
Anatoliki Makedonia, Thraki	221	195	-11.8	83	75	-9.6	138	120	-13.0
Kentriki Makedonia	418	414	-1.0	193	205	6.2	225	209	-7.1
Dytiki Makedonia	49	69	40.8	27	44	63.0	22	25	13.6
Ipeiros	91	92	1.1	35	54	54.3	56	38	-32.1
Thessalia	117	113	-3.4	68	68	0.0	49	45	-8.2
Stereia Ellada	80	149	86.3	50	89	78.0	30	60	100.0
Ionia Nisia	25	24	-4.0	10	13	30.0	15	11	-26.7
Dytiki Ellada	111	112	0.9	61	55	-9.8	50	57	14.0
Peloponnisos	81	63	-22.2	48	37	-22.9	33	26	-21.2
Attiki	275	301	9.5	140	168	20.0	135	133	-1.5
Voreio Aigaio	100	113	13.0	49	64	30.6	51	49	-3.9
Notio Aigaio	56	58	3.6	28	28	0.0	28	30	7.1
Kriti	171	148	-13.5	120	105	-12.5	51	43	-15.7

EXPLANATORY NOTES

Survey on General Secondary Education General Secondary Education includes lower and upper secondary schools of general education, ecclesiastical secondary schools and second chance schools. The surveys are conducted, on a yearly basis, aiming at collecting data on the number of pupils enrolled, the school units and the number of teaching staff.

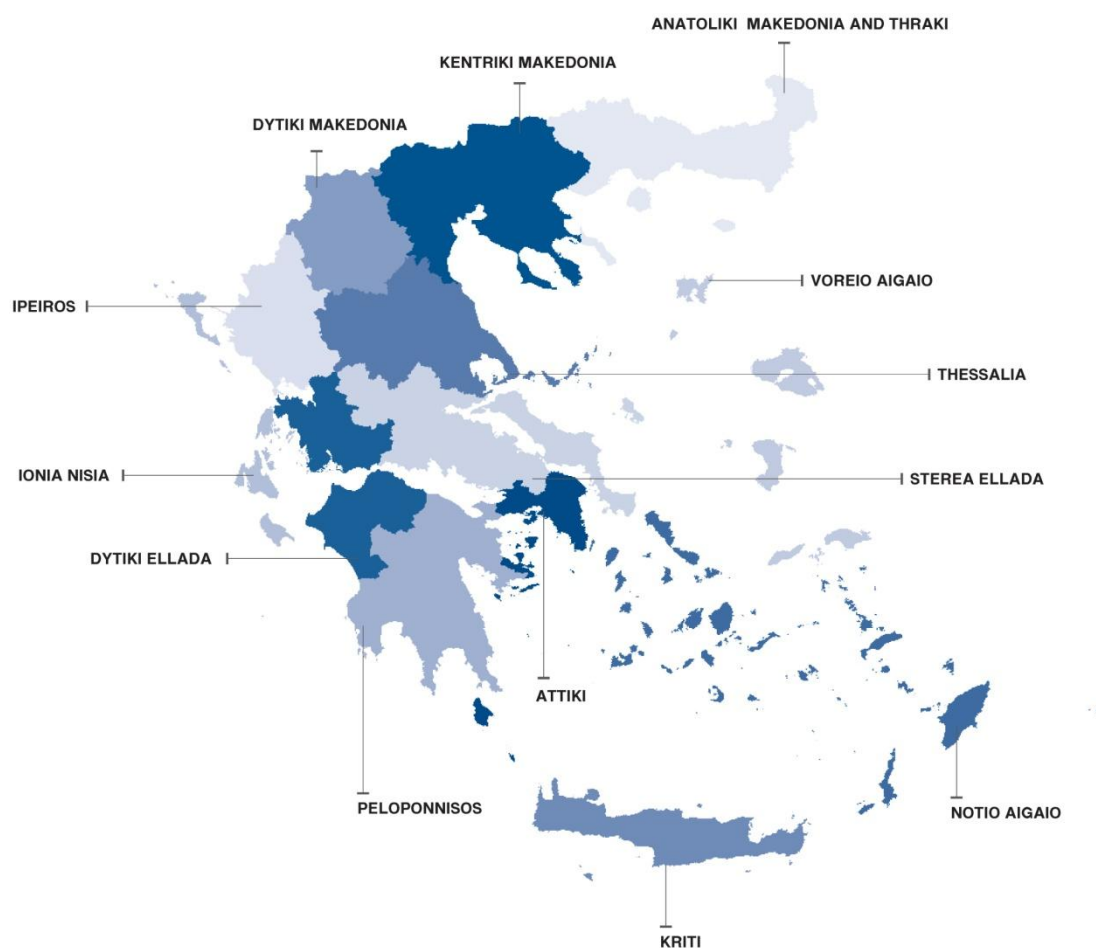
Legal Frame The surveys are conducted by virtue of Regulation 452/2008 of the European Parliament and the Council and implementing Regulation 912/2013 of the European Commission.

Statistical Units The statistical units are the school units.

Coverage Greece total.

Geographical Classification The geographical classification is based on Nomenclature of Territorial Units for Statistics.

Map of the 13 Regions (NUTS 2) of Greece



Dissemination of results	The data are posted on a yearly basis on the website of ELSTAT and are published in a relevant Press Release.
Reference period	The data of the surveys refer to the end of school year 2017/2018.
Methodology and coverage	<p>Until the school year 2013/2014, the surveys on General Secondary Education used to be census, yearly surveys and they were conducted by ELSTAT.</p> <p>For the school year 2014/2015 onwards the data of these surveys are collected as follows:</p> <ul style="list-style-type: none"> – As regards public school units, the data were extracted from the “live” e-platform “MySchool” of the Ministry of Education and Religious Affairs. – As regards private school units, the data were collected from the questionnaires that had been sent to the relevant school units. <p>For Second Chance Schools’ survey, questionnaires were sent to the schools.</p>
References	<p>More information, such as tables with the survey results, samples of questionnaires, etc, on the Survey on General Secondary Education can be found on the webpage of ELSTAT www.statistics.gr and at the link: “Statistics” / Population and Social Conditions / Education / Lower Secondary Education Schools (Beginning – End of school year) or Upper Secondary Education Schools (Beginning – End of school year”).</p>