



PRESS RELEASE

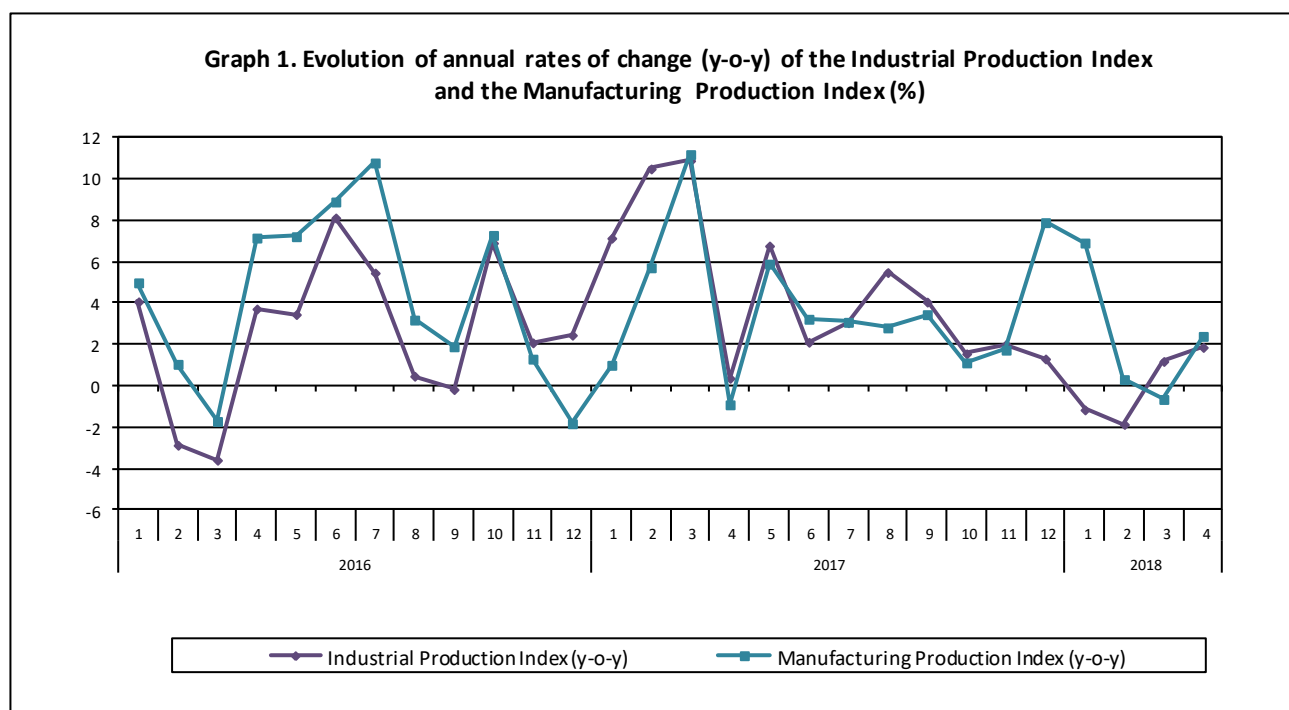
INDUSTRIAL PRODUCTION INDEX: April 2018, y-o-y increase of 1.9%

The evolution of the Industrial Production Index (IPI) with base year 2010=100.0 in April 2018, on the basis of provisional and working day adjusted data, is as follows:

The Overall Industrial Production Index in April 2018 recorded an increase of 1.9% compared with April 2017. The corresponding annual rate of change of the Overall IPI in April 2017 was 0.4% (Table 1).

The average Overall Industrial Production Index for the period from January to April 2018 recorded an increase of 0.02% compared with the average IPI of the period from January to April 2017 (Table 2).

The seasonally adjusted Overall Industrial Production Index in April 2018 recorded a decrease of 2.9% compared with March 2018 (Table 4).



Information:

Economic and Short-Term Indices Division
Production Indices Section

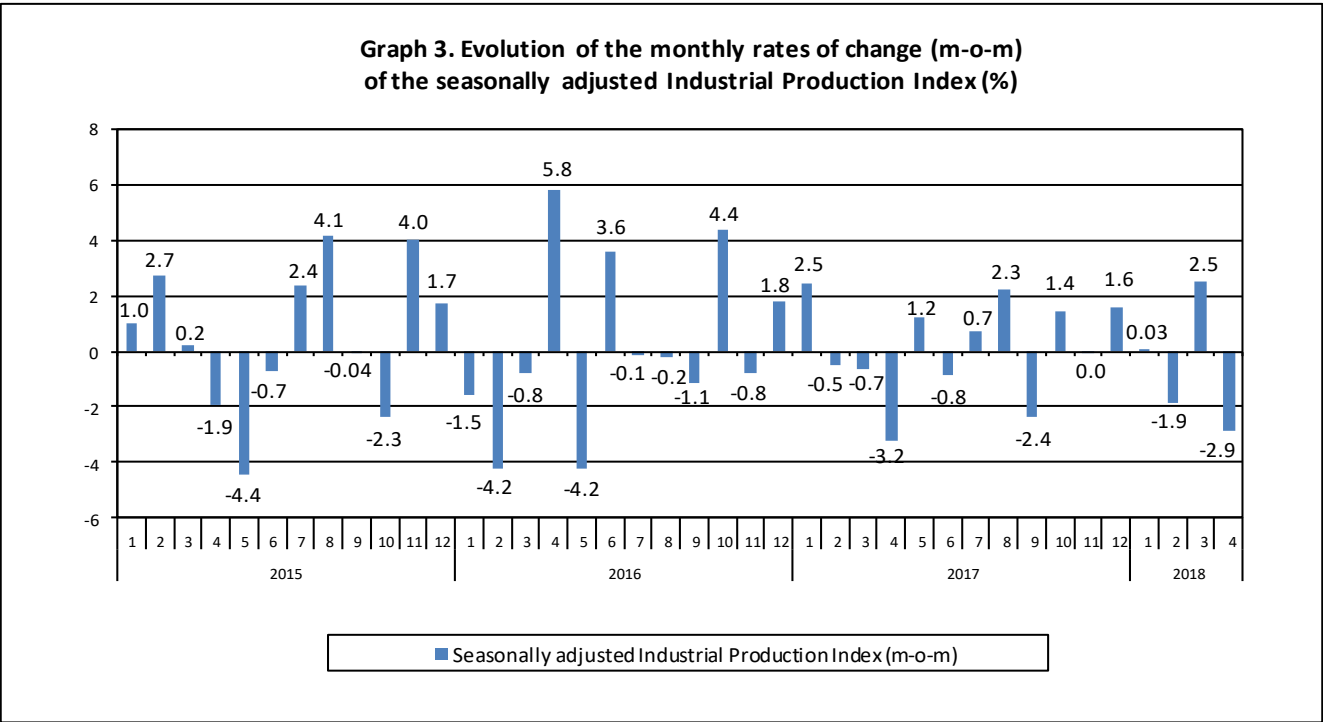
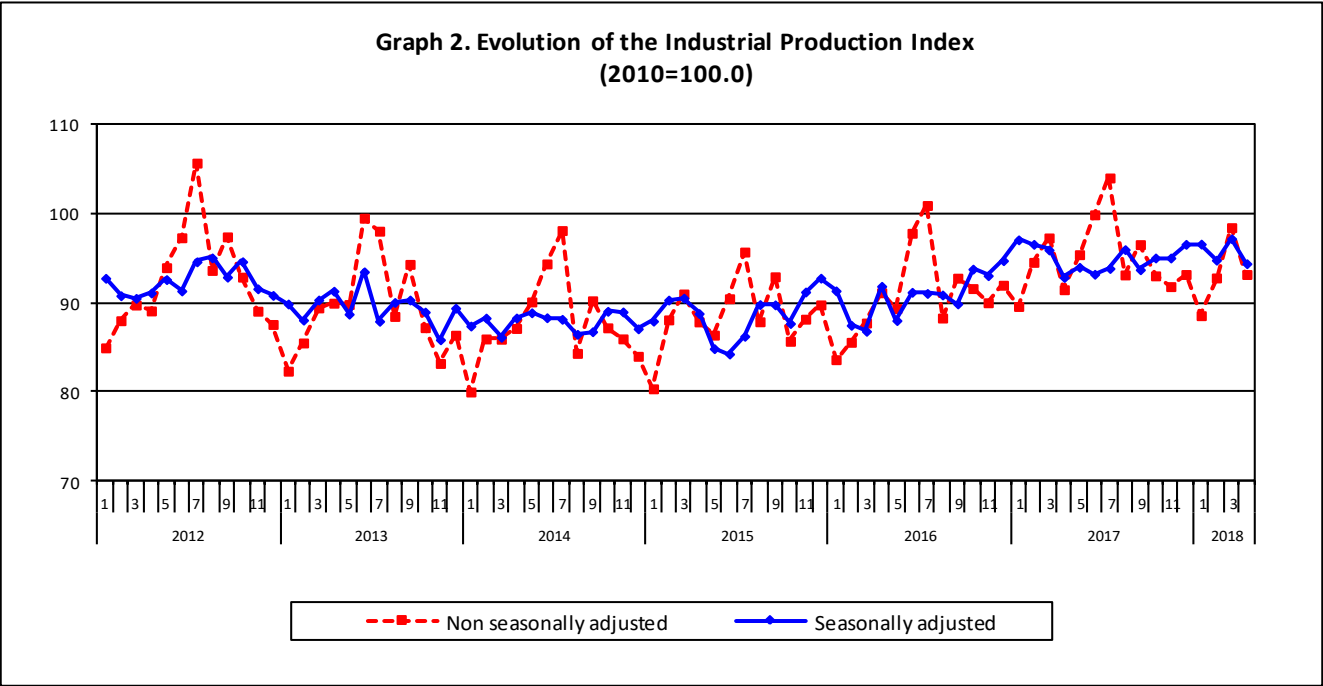
Diamantaki Aikaterini, Thymoglou Georgia

Tel: +30 213 135 2122, +30 213 135 2737

Fax: +30 213 135 2738

E-mail: a.diamantaki@statistics.gr, g.thymoglou@statistics.gr

The following graphs depict the evolution of the seasonally and non-seasonally adjusted Overall Industrial Production Index, as well as the monthly rates of change (m-o-m) of the seasonally adjusted index.



It should be noted that the time series with the seasonally adjusted indices is recalculated every time a new observation is added in the time series. Therefore, the seasonally adjusted data differ from the data published in the previous Press Release.

Evolution of the Industrial Production Index in April 2018

I. Annual changes: April 2018/ April 2017 (Table 1)

The 1.9% increase of the working day adjusted Overall IPI in April 2018, compared with the corresponding index in April 2017, is due to the annual changes of the sub-indices in the following industrial sections:

1. Increase of:

- 2.4% in the Manufacturing Production Index. The increase was the result of the annual changes of the sub-indices in the following 2-digit divisions: basic pharmaceutical products and pharmaceutical preparations, fabricated metal products, machinery and equipment, motor vehicles, trailers and semi-trailers, furniture.
- 2.2% in the Electricity Production Index.
- 0.2% in the Water Supply Production Index.

2. Decrease of:

- 6.4% in the Mining and Quarrying Production Index. The decrease was the result of the annual changes of the sub-indices in the following 2-digit divisions: mining of coal and lignite, other mining and quarrying products.

II. Rates of change of the average index in the period January – April 2018 compared with the corresponding index of the period January – April 2017 (Table 2)

The 0.02% increase of the working day adjusted Overall IPI in the 4-month period January – April 2018, compared with the corresponding index in January – April 2017, is due to the corresponding rates of change of the sub-indices in the following industrial sections:

1. Increase of:

- 2.0% in the Manufacturing Production Index.

2. Decrease of:

- 3.1% in the Mining and Quarrying Production Index.
- 5.7% in the Electricity Production Index.
- 2.5% in the Water Supply Production Index

III. Monthly changes: April 2018/ March 2018 (Table 4)

The 2.9% decrease of the seasonally adjusted Overall IPI in April 2018, compared with the corresponding index in March 2018, is due to the monthly changes of the sub-indices in the following industrial sections:

1. Decrease of:

- 5.1% in the Mining and Quarrying Production Index.
- 1.7% in the Manufacturing Production Index.
- 10.2% in the Electricity Production Index.

2. Increase of:

- 1.5% in the Water Supply Production Index.

The following graph depicts the evolution of the Industrial Production Index and the Industrial Sections Indices.

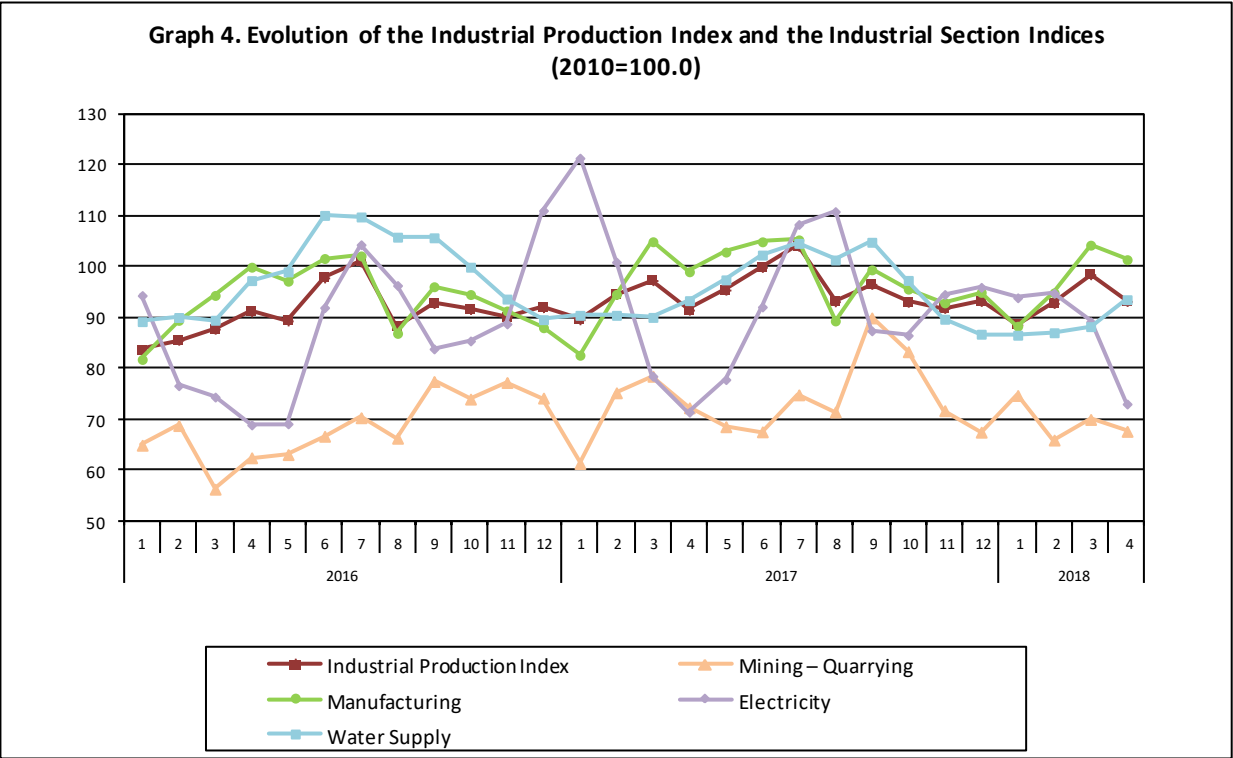


Table 1. Annual rates of change of the Industrial Production Index*(Working day adjusted data, according to the real number of working days)***Base year: 2010=100.0**

Code		Division	April			Rate of change (%)	
			2018*	2017	2016	2018/2017	2017/2016
OVERALL INDEX			93.18	91.47	91.13	1.9	0.4
B	MINING AND QUARRYING		67.62	72.24	62.42	-6.4	15.7
05	Mining of coal and lignite		54.08	64.90	43.22	-16.7	50.2
06	Extraction of crude petroleum and natural gas		181.90	97.06	144.75	87.4	-32.9
07	Mining of metal ores		88.60	86.56	87.22	2.4	-0.8
08	Other mining and quarrying products		78.50	80.64	87.56	-2.7	-7.9
C	MANUFACTURING		101.39	99.01	99.91	2.4	-0.9
10	Food		94.73	94.62	95.86	0.1	-1.3
11	Beverages		98.08	97.72	115.72	0.4	-15.6
12	Tobacco products		63.44	92.01	148.55	-31.0	-38.1
13	Textiles		69.03	69.09	71.94	-0.1	-4.0
14	Wearing apparel		59.13	60.47	63.13	-2.2	-4.2
15	Leather and related products		52.98	59.10	61.88	-10.3	-4.5
16	Wood and cork		46.64	43.19	41.05	8.0	5.2
17	Paper and paper products		100.83	94.26	96.42	7.0	-2.2
18	Printing and recording services		48.33	50.05	62.24	-3.4	-19.6
19	Coke and refined petroleum products		134.37	137.87	128.68	-2.5	7.1
20	Chemicals and chemical products		117.53	114.17	118.53	2.9	-3.7
21	Basic pharmaceutical products and pharmaceutical preparations		164.09	131.84	123.03	24.5	7.2
22	Rubber and plastic products		98.16	98.66	95.08	-0.5	3.8
23	Other non-metallic mineral products		66.69	65.39	71.16	2.0	-8.1
24	Basic metals		133.92	129.76	113.40	3.2	14.4
25	Fabricated metal products		89.64	76.93	86.99	16.5	-11.6
26	Computers, electronic and optical products		113.71	110.76	103.54	2.7	7.0
27	Electrical equipment		73.41	77.67	69.45	-5.5	11.8
28	Machinery and equipment n. e. c.		119.05	99.67	110.47	19.4	-9.8
29	Motor vehicles, trailers and semi-trailers		88.08	32.04	39.29	174.9	-18.5
30	Other transport equipment		70.41	73.24	89.97	-3.9	-18.6
31	Furniture		60.23	53.60	60.50	12.4	-11.4
32	Other manufactured goods		108.59	104.25	115.21	4.2	-9.5
33	Repair and installation services of machinery and equipment		60.01	60.79	48.14	-1.3	26.3
D	ELECTRICITY		73.00	71.40	68.88	2.2	3.7
35	Production and distribution of electricity		73.00	71.40	68.88	2.2	3.7
E	WATER SUPPLY		93.51	93.33	97.27	0.2	-4.1
36	Treatment and supply services of natural water		93.51	93.33	97.27	0.2	-4.1
MAIN INDUSTRIAL GROUPINGS							
1	Energy		90.29	91.04	85.73	-0.8	6.2
2	Intermediate goods		94.63	92.80	91.63	2.0	1.3
3	Capital goods		81.36	69.07	69.48	17.8	-0.6
4	Consumer Durables		63.22	60.90	64.84	3.8	-6.1
5	Consumer Non-Durables		100.36	97.69	104.66	2.7	-6.7

* Provisional data

Note: The indices are rounded up to two decimal figures when published and percentage changes up to one decimal figure when published.

Table 2. Average indices of the period January – April and rates of change (%) of the Industrial Production Index
(Working day adjusted data. according to the real number of working days)

Base year: 2010=100.0

Code		Division	Average indices of the period Jan.-Apr.			Rate of change (%)	
			2018*	2017	2016	2018/2017	2017/2016
OVERALL INDEX			93.25	93.22	87.01	0.02	7.1
B	MINING AND QUARRYING		69.54	71.80	63.08	-3.1	13.8
05	Mining of coal and lignite		64.23	70.40	52.22	-8.8	34.8
06	Extraction of crude petroleum and natural gas		157.92	109.69	117.85	44.0	-6.9
07	Mining of metal ores		83.72	70.18	79.86	19.3	-12.1
08	Other mining and quarrying products		67.25	71.86	75.42	-6.4	-4.7
C	MANUFACTURING		97.20	95.27	91.37	2.0	4.3
10	Food		92.39	91.54	90.98	0.9	0.6
11	Beverages		79.93	74.59	85.46	7.1	-12.7
12	Tobacco products		60.65	95.52	138.88	-36.5	-31.2
13	Textiles		65.92	67.72	68.00	-2.7	-0.4
14	Wearing apparel		47.17	47.68	48.18	-1.1	-1.0
15	Leather and related products		50.27	51.72	54.25	-2.8	-4.7
16	Wood and cork		38.36	38.74	38.35	-1.0	1.0
17	Paper and paper products		102.12	96.94	96.88	5.3	0.1
18	Printing and recording services		46.53	46.23	53.20	0.7	-13.1
19	Coke and refined petroleum products		138.37	136.91	124.87	1.1	9.6
20	Chemicals and chemical products		110.85	107.87	108.98	2.8	-1.0
21	Basic pharmaceutical products and pharmaceutical preparations		150.45	128.84	115.46	16.8	11.6
22	Rubber and plastic products		96.10	95.39	92.53	0.7	3.1
23	Other non-metallic mineral products		59.34	60.44	58.32	-1.8	3.6
24	Basic metals		139.00	137.85	108.10	0.8	27.5
25	Fabricated metal products		85.16	85.31	78.15	-0.2	9.2
26	Computers, electronic and optical products		112.44	111.93	94.49	0.5	18.4
27	Electrical equipment		74.38	73.29	68.23	1.5	7.4
28	Machinery and equipment n. e. c.		102.45	89.38	87.35	14.6	2.3
29	Motor vehicles, trailers and semi-trailers		82.30	73.68	29.12	11.7	153.0
30	Other transport equipment		54.23	58.62	72.35	-7.5	-19.0
31	Furniture		52.07	44.03	47.78	18.3	-7.8
32	Other manufactured goods		88.32	84.60	85.94	4.4	-1.6
33	Repair and installation services of machinery and equipment		51.85	51.45	46.35	0.8	11.0
D	ELECTRICITY		87.71	93.03	78.54	-5.7	18.4
35	Production and distribution of electricity		87.71	93.03	78.54	-5.7	18.4
E	WATER SUPPLY		88.82	91.06	91.49	-2.5	-0.5
36	Treatment and supply services of natural water		88.82	91.06	91.49	-2.5	-0.5
MAIN INDUSTRIAL GROUPINGS							
1	Energy		99.62	102.67	90.04	-3.0	14.0
2	Intermediate goods		91.89	90.99	85.00	1.0	7.0
3	Capital goods		69.87	67.41	59.44	3.7	13.4
4	Consumer Durables		56.74	53.97	51.98	5.1	3.8
5	Consumer Non-Durables		93.01	90.22	92.92	3.1	-2.9

* Provisional data

Note: The indices are rounded up to two decimal figures when published and percentage changes up to one decimal figure when published.

Table 3. Monthly rate of change of the Industrial Production Index*(Working day adjusted data. according to the real number of working days)*

Base year: 2010=100.0

Code	Division	April 2018*	March 2018**	Rate of change (%) Apr. 2018/ Mar. 2018
OVERALL INDEX		93.18	98.45	-5.3
B	MINING AND QUARRYING	67.62	69.96	-3.3
05	Mining of coal and lignite	54.08	64.67	-16.4
06	Extraction of crude petroleum and natural gas	181.90	143.72	26.6
07	Mining of metal ores	88.60	87.59	1.2
08	Other mining and quarrying products	78.50	67.72	15.9
C	MANUFACTURING	101.39	104.24	-2.7
10	Food	94.73	94.86	-0.1
11	Beverages	98.08	85.43	14.8
12	Tobacco products	63.44	68.31	-7.1
13	Textiles	69.03	66.16	4.3
14	Wearing apparel	59.13	46.52	27.1
15	Leather and related products	52.98	64.61	-18.0
16	Wood and cork	46.64	40.70	14.6
17	Paper and paper products	100.83	103.94	-3.0
18	Printing and recording services	48.33	51.81	-6.7
19	Coke and refined petroleum products	134.37	138.43	-2.9
20	Chemicals and chemical products	117.53	124.11	-5.3
21	Basic pharmaceutical products and pharmaceutical preparations	164.09	163.25	0.5
22	Rubber and plastic products	98.16	96.65	1.6
23	Other non-metallic mineral products	66.69	65.17	2.3
24	Basic metals	133.92	170.88	-21.6
25	Fabricated metal products	89.64	96.51	-7.1
26	Computers. electronic and optical products	113.71	124.70	-8.8
27	Electrical equipment	73.41	82.70	-11.2
28	Machinery and equipment n. e. c.	119.05	115.30	3.3
29	Motor vehicles. trailers and semi-trailers	88.08	80.02	10.1
30	Other transport equipment	70.41	55.12	27.7
31	Furniture	60.23	65.26	-7.7
32	Other manufactured goods	108.59	88.41	22.8
33	Repair and installation services of machinery and equipment	60.01	63.82	-6.0
D	ELECTRICITY	73.00	89.17	-18.1
35	Production and distribution of electricity	73.00	89.17	-18.1
E	WATER SUPPLY	93.51	88.22	6.0
36	Treatment and supply services of natural water	93.51	88.22	6.0
MAIN INDUSTRIAL GROUPINGS				
1	Energy	90.29	100.34	-10.0
2	Intermediate goods	94.63	101.20	-6.5
3	Capital goods	81.36	79.75	2.0
4	Consumer Durables	63.22	67.29	-6.0
5	Consumer Non-Durables	100.36	99.26	1.1

* Provisional data **Revised data

Note: The indices are rounded up to two decimal figures when published and percentage changes up to one decimal figure when published.

Table 4. Monthly rate of change of the seasonally adjusted Industrial Production Index

Base year: 2010=100.0

Code	Division	April 2018	March 2018	Rate of change (%) Apr. 2018/ Mar. 2018
OVERALL INDEX		94.40	97.20	-2.9
B	MINING AND QUARRYING	69.68	73.40	-5.1
05	Mining of coal and lignite	58.57	67.45	-13.2
06	Extraction of crude petroleum and natural gas	183.99	143.00	28.7
07	Mining of metal ores	84.16	86.21	-2.4
08	Other mining and quarrying products	79.50	71.66	10.9
C	MANUFACTURING	98.27	99.97	-1.7
10	Food	96.10	95.38	0.8
11	Beverages	81.72	82.56	-1.0
12	Tobacco products	65.54	65.45	0.1
13	Textiles	63.10	61.16	3.2
14	Wearing apparel	46.66	46.50	0.3
15	Leather and related products	43.85	46.23	-5.1
16	Wood and cork	45.80	40.33	13.6
17	Paper and paper products	100.09	99.59	0.5
18	Printing and recording services	43.30	48.17	-10.1
19	Coke and refined petroleum products	137.84	138.28	-0.3
20	Chemicals and chemical products	102.12	106.68	-4.3
21	Basic pharmaceutical products and pharmaceutical preparations	149.73	144.56	3.6
22	Rubber and plastic products	93.46	89.33	4.6
23	Other non-metallic mineral products	65.03	66.64	-2.4
24	Basic metals	134.78	151.93	-11.3
25	Fabricated metal products	89.05	89.77	-0.8
26	Computers, electronic and optical products	114.94	108.28	6.2
27	Electrical equipment	72.24	75.45	-4.3
28	Machinery and equipment n. e. c.	108.45	107.43	0.9
29	Motor vehicles, trailers and semi-trailers	115.30	83.83	37.5
30	Other transport equipment	62.83	58.92	6.6
31	Furniture	56.26	58.06	-3.1
32	Other manufactured goods	92.52	91.21	1.4
33	Repair and installation services of machinery and equipment	60.64	60.88	-0.4
D	ELECTRICITY	84.38	93.97	-10.2
35	Production and distribution of electricity	84.38	93.97	-10.2
E	WATER SUPPLY	97.01	95.61	1.5
36	Treatment and supply services of natural water	97.01	95.61	1.5
MAIN INDUSTRIAL GROUPINGS				
1	Energy	100.01	105.05	-4.8
2	Intermediate goods	92.12	95.68	-3.7
3	Capital goods	80.75	76.43	5.6
4	Consumer Durables	58.06	59.15	-1.8
5	Consumer Non-Durables	93.93	94.58	-0.7

Notes:

1. The indices are rounded up to two decimal figures when published and percentage changes up to one decimal figure when published.
2. The whole time-series with seasonally adjusted indices is recalculated every time a new observation is added in the time-series.

Table 5. Evolution of the Overall Industrial Production Index*(Working day adjusted data. according to the real number of working days)***Base year: 2010=100.0**

Year and month	Overall Index	Monthly rate of change (%)	Annual rate of change (%)	12-month average indices (moving average)	Rate of change of the 12-month average indices (%)
2016:					
1	83.61	-6.9	4.1	88.96	1.3
2	85.56	2.3	-2.9	88.75	0.9
3	87.73	2.5	-3.6	88.48	0.1
4	91.13	3.9	3.7	88.75	0.3
5	89.36	-1.9	3.5	89.00	1.0
6	97.82	9.5	8.1	89.61	2.0
7	100.94	3.2	5.5	90.05	2.8
8	88.29	-12.5	0.5	90.08	2.5
9	92.77	5.1	-0.2	90.07	2.2
10	91.60	-1.3	6.9	90.56	2.9
11	90.01	-1.7	2.1	90.72	2.8
12	91.98	2.2	2.5	90.90	2.5
Annual average	90.90	–	–	90.90	2.5
2017:					
1	89.59	-2.6	7.1	91.40	2.7
2	94.55	5.5	10.5	92.15	3.8
3	97.29	2.9	10.9	92.94	5.0
4	91.47	-6.0	0.4	92.97	4.8
5	95.41	4.3	6.8	93.48	5.0
6	99.89	4.7	2.1	93.65	4.5
7	104.03	4.1	3.1	93.91	4.3
8	93.14	-10.5	5.5	94.31	4.7
9	96.54	3.7	4.1	94.62	5.1
10	93.03	-3.6	1.6	94.74	4.6
11	91.82	-1.3	2.0	94.89	4.6
12	93.18	1.5	1.3	94.99	4.5
Annual average	94.99	–	–	94.99	4.5
2018:					
1	88.56	-5.0	-1.2	94.91	3.8
2	92.79	4.8	-1.9	94.76	2.8
3**	98.45	6.1	1.2	94.86	2.1
4*	93.18	-5.3	1.9	95.00	2.2

* Provisional data ** Revised data

Note: The indices are rounded up to two decimal figures when published and percentage changes up to one decimal figure when published.

Table 6. Monthly evolution of the seasonally adjusted Overall Industrial Production Index and Main Industrial Groupings

Base year: 2010=100.0

Year and month	Overall Index		Energy		Intermediate goods		Capital goods		Consumer durables		Consumer non-durables	
	Index	Monthly rate of change (%)	Index	Monthly rate of change (%)	Index	Monthly rate of change (%)	Index	Monthly rate of change (%)	Index	Monthly rate of change (%)	Index	Monthly rate of change (%)
2016:	1	91.34 -1.5	98.91 -1.4	84.29 -2.4	63.69 -11.1	54.25 -21.4	95.79 1.5					
	2	87.47 -4.2	89.02 -10.0	86.10 2.2	65.40 2.7	51.21 -5.6	93.73 -2.1					
	3	86.80 -0.8	87.30 -1.9	85.88 -0.2	67.10 2.6	53.48 4.4	93.39 -0.4					
	4	91.86 5.8	94.87 8.7	89.05 3.7	69.40 3.4	58.89 10.1	97.31 4.2					
	5	88.01 -4.2	92.97 -2.0	83.36 -6.4	69.08 -0.5	56.00 -4.9	91.59 -5.9					
	6	91.18 3.6	92.80 -0.2	92.75 11.3	73.30 6.1	56.58 1.0	93.54 2.1					
	7	91.05 -0.1	96.52 4.0	85.94 -7.3	71.81 -2.0	59.08 4.4	94.44 1.0					
	8	90.88 -0.2	96.91 0.4	88.85 3.4	77.80 8.3	60.59 2.6	89.11 -5.6					
	9	89.88 -1.1	98.25 1.4	85.69 -3.6	75.05 -3.5	55.70 -8.1	87.47 -1.8					
	10	93.79 4.4	103.22 5.1	87.79 2.5	75.02 -0.04	56.75 1.9	92.65 5.9					
	11	93.05 -0.8	101.10 -2.0	88.11 0.4	77.10 2.8	55.29 -2.6	92.27 -0.4					
	12	94.74 1.8	109.84 8.6	85.63 -2.8	72.11 -6.5	54.76 -1.0	89.61 -2.9					
Annual average	90.84	96.81	86.95	71.40	56.05	92.57						
2017:	1	97.07 2.5	113.38 3.2	90.86 6.1	75.22 4.3	51.19 -6.5	87.73 -2.1					
	2	96.57 -0.5	105.93 -6.6	93.26 2.6	80.40 6.9	57.06 11.5	92.59 5.5					
	3	95.94 -0.7	100.98 -4.7	95.09 2.0	77.01 -4.2	60.56 6.1	96.04 3.7					
	4	92.85 -3.2	100.80 -0.2	90.27 -5.1	69.31 -10.0	55.60 -8.2	91.63 -4.6					
	5	93.99 1.2	100.00 -0.8	92.84 2.8	74.39 7.3	60.63 9.0	93.06 1.6					
	6	93.21 -0.8	99.32 -0.7	91.71 -1.2	73.96 -0.6	57.49 -5.2	92.52 -0.6					
	7	93.86 0.7	97.99 -1.3	92.91 1.3	79.88 8.0	55.74 -3.1	94.42 2.0					
	8	95.98 2.3	101.09 3.2	99.56 7.2	73.07 -8.5	53.61 -3.8	93.12 -1.4					
	9	93.72 -2.4	99.67 -1.4	93.06 -6.5	72.36 -1.0	55.40 3.3	93.09 -0.03					
	10	95.04 1.4	102.14 2.5	92.75 -0.3	74.89 3.5	56.83 2.6	94.06 1.0					
	11	95.04 0.0	105.26 3.1	91.00 -1.9	73.80 -1.5	55.79 -1.8	91.63 -2.6					
	12	96.57 1.6	102.90 -2.2	92.56 1.7	75.26 2.0	65.28 17.0	98.12 7.1					
Annual average	94.99	102.45	92.99	74.96	57.10	93.17						
2018:	1	96.60 0.03	102.47 -0.4	95.81 3.5	78.41 4.2	60.27 -7.7	95.38 -2.8					
	2	94.79 -1.9	101.72 -0.7	89.88 -6.2	75.13 -4.2	60.81 0.9	96.16 0.8					
	3	97.20 2.5	105.05 3.3	95.68 6.5	76.43 1.7	59.15 -2.7	94.58 -1.6					
	4	94.40 -2.9	100.01 -4.8	92.12 -3.7	80.75 5.6	58.06 -1.8	93.93 -0.7					

Notes:

1. The indices are rounded up to two decimal figures when published and percentage changes up to one decimal figure when published.
2. The whole time-series with seasonally adjusted indices is recalculated every time a new observation is added in the time-series.

METHODOLOGICAL NOTES

Generally	The Industrial Production Index (IPI) is compiled since 1959.
Purpose of the index	The IPI is an important business cycle indicator, which shows the monthly activity in the Mining and Quarrying, Manufacturing, Electricity and Water Supply divisions. More specifically, the objective of the Industrial Production Index is to compare the magnitude (volume) of the output in the current month with the corresponding output in any given period which is considered as base period. The IPI shows the evolution of the value added of the production factors cost, at constant prices.
Legal basis	The compilation of the IPI is governed by Council Regulation (EC) No 1165/98 concerning short-term statistics. Furthermore, the IPI is governed by Regulation (EC) No 1893/2006 of the European Parliament and of the Council, by Commission Regulation (EC) No 656/2007 and by Council Regulation (EC) No 451/2008.
Reference period	Month.
Base year	2010=100.0.
Revision	The IPI is a fixed base index. Pursuant to the provisions of Council Regulation No 1165/98 concerning short-term statistics, the index is updated every five (5) years, in years ending in 0 or 5.
Statistical classifications	At the level of branches of economic activities, the classification NACE Rev.2 of Eurostat was used (Regulation No 1893/2006), while at the level of main industrial groups, the allocation of two-digit and three-digit NACE Rev. 2 headings to categories of aggregate classification was used, in accordance with Council Regulation No 656/2007. At product level, the classification CPA 2008 of Eurostat was used, according to Council Regulation No 451/2008.
Geographical coverage	The Index covers the whole Country.
Coverage of economic activities	The index covers all the sections of industry, the main industrial groups, all levels of economic activities (divisions, groups and classes) and the level of products.
Statistical survey	The data are collected from a sample of 1,338 enterprises. The survey covers 354 products and the measurement of the surveyed products is made in terms of output quantities or in terms of production value or turnover, according to the specific situation in each branch of economic activity.
Seasonal adjustment	Seasonal adjustment is the procedure followed to remove the impact of seasonality on the time-series (i.e. the impact of monthly effects, e.g. holidays, tourist period etc), in order to improve comparability over time. The method used is the TRAMO-SEATS method with the use of JDemetra+ 2.0.0. For the seasonal adjustment of the Industrial Production Index at 2-digit level of NACE Rev.2, at section level (B – Mining and Quarrying, C – Manufacturing, D – Electricity and E – Water Supply) and for the Main Industrial Groupings (MIGs), the direct approach is applied, namely each time-series is seasonally adjusted independently. For the overall Industrial Production Index, the indirect approach is applied, with the seasonally adjusted IPI being computed by aggregating the seasonally adjusted MIGs using appropriate weights.
Publication of data	The IPI with the new base year (2010) is released since August 2014, with June 2014 as the first reference month. Data with base year 2010=100.0 are available from January 2000 onwards.
References	More information about the methodology concerning the compilation and calculation of the index and for the time series is available on the website of the Hellenic Statistical Authority (ELSTAT) (http://www.statistics.gr/en/statistics/-/publication/DKT21/-).