



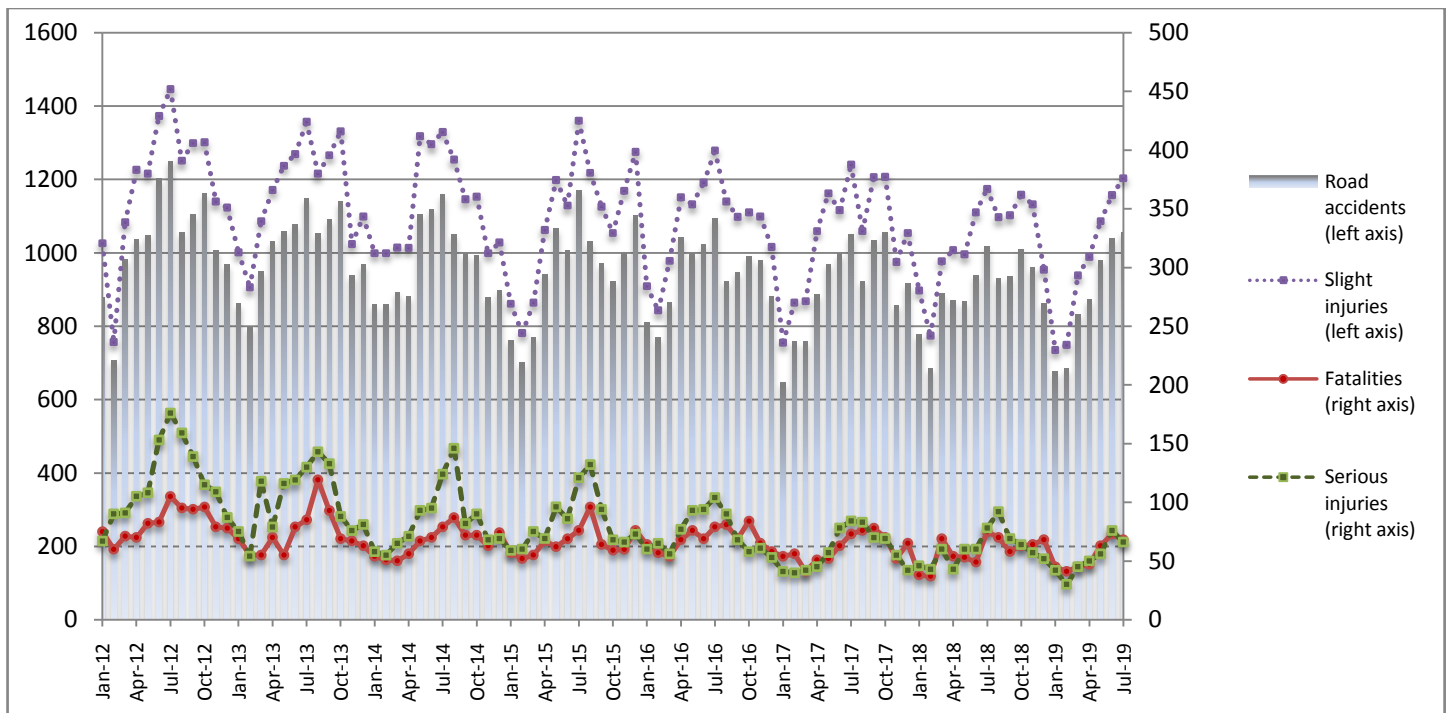
PRESS RELEASE

ROAD TRAFFIC ACCIDENTS: July 2019

The Hellenic Statistical Authority (ELSTAT) announces provisional¹ data on Road Traffic Accidents for July 2019. In particular, the road traffic accidents which occurred in Greece, resulting in death or injury, increased by 3.9% in comparison with the corresponding month of 2018 (1,056 road accidents in July 2019, against 1,016 road accidents in July 2018).

The casualties of the injury-causing accidents that occurred in July 2019 were as follows: 68 deaths, 66 serious injuries and 1,203 slight injuries. In contrast, in July 2018 the corresponding figures were: 75 deaths, 78 serious injuries and 1,174 slight injuries. Therefore, road accident casualties in July 2019 decreased by 9.3% for deaths, decreased by 15.4% for serious injuries and increased by 2.5% for slight injuries.

Graph 1: Road traffic accidents and casualties, January 2012 - July 2019



Provisional data for the period November 2018 - July 2019

Information on methodological issues:
Sectoral Statistics Division
Justice Statistics Section
Dimitra Athanasopoulou
Tel: +30 213 135 2135
Fax : +30 213 135 2764
e-mail: justistat@statistics.gr

Information for data provision:
Tel: 213 135 2022, 2308, 2310
e-mail: data.dissem@statistics.gr

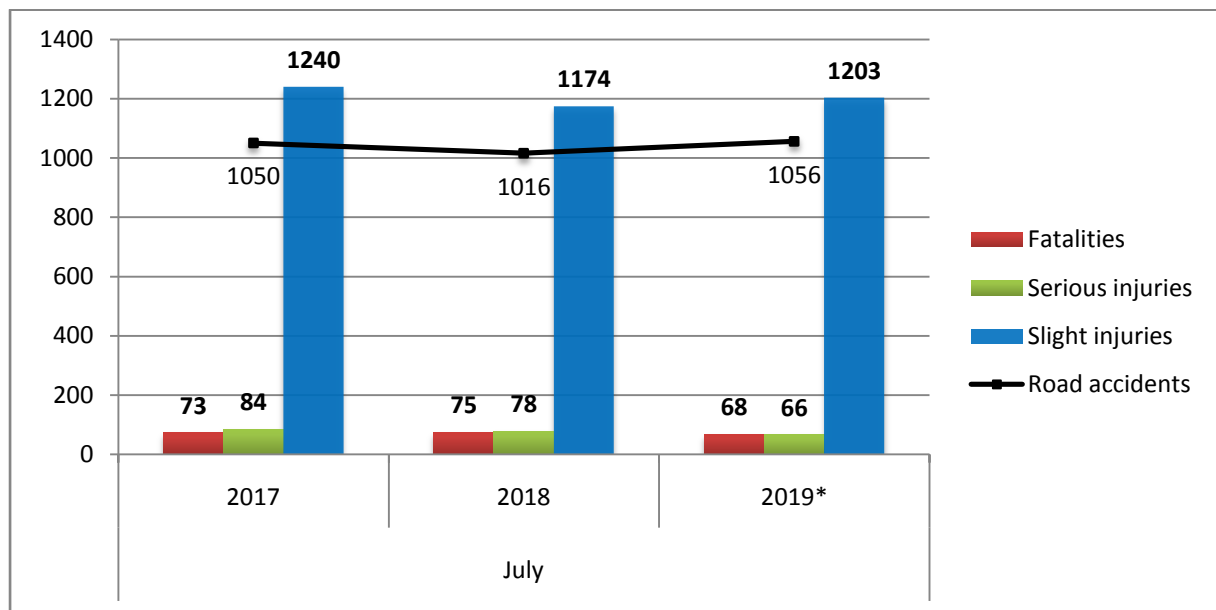
¹ Data for the reference year are provisional until the finalisation of the annual data, which become final 10 months after the end of the reference year. During these 10 months the provisional data are updated on the basis of the data of the Road Accident Forms which are transmitted to ELSTAT by Police Authorities.

Table 1: Road traffic accidents and casualties, July 2017 - 2019*

	July				
	2017	2018	2018/2017 (%)	2019*	2019*/2018 (%)
Road accidents	1,050	1,016	-3.2	1,056	3.9
Fatalities	73	75	2.7	68	-9.3
Total injuries	1,324	1,252	-5.4	1,269	1.4
Serious injuries	84	78	-7.1	66	-15.4
Slight injuries	1,240	1,174	-5.3	1,203	2.5

* Provisional data

Graph 2: Road traffic accidents and casualties, July 2017 - 2019*



* Provisional data

Table 2: Road traffic accidents and casualties, by region and department, July 2018 and 2019*

Region and department	Road accidents			Fatalities			Serious injuries			Slight injuries		
	2018	2019*	%	2018	2019*	%	2018	2019*	%	2018	2019*	%
Greece Total	1,016	1,056	3.9	75	68	-9.3	78	66	-15.4	1,174	1,203	2.5
Anatoliki Makedonia and Thraki (East Macedonia and Thrace)	51	47	-7.8	6	2	-66.7	6	6	0.0	55	48	-12.7
Drama	6	3	-50.0	0	0		1	1		6	3	
Evros	10	19	90.0	1	0		1	1		10	24	
Kavala	19	12	-36.8	2	1		1	2		21	10	
Xanthi	4	6	50.0	1	1		1	1		5	5	
Rodopi	12	7	-41.7	2	0		2	1		13	6	
Kentriki Makedonia (Central Macedonia)	183	188	2.7	10	11	10.0	11	7	-36.4	221	226	2.3
Imathia	7	8	14.3	3	2		0	1		4	7	
Thessaloniki	134	138	3.0	3	4		6	4		154	165	
Kilkis	7	6	-14.3	1	0		1	0		6	7	
Pella	2	4	100.0	1	1		0	0		2	5	
Pieria	4	4	0.0	0	1		1	0		3	5	
Serres	7	5	-28.6	2	2		1	2		19	3	
Chalkidiki	22	23	4.5	0	1		2	0		33	34	
Dytiki Makedonia (West Macedonia)	8	8	0.0	4	4	0.0	1	0	-100.0	12	9	-25.0
Grevena	2	1	-50.0	1	0		0	0		2	4	
Kastoria	2	0	-100.0	0	0		0	0		4	0	
Kozani	3	4	33.3	2	2		0	0		6	4	
Florina	1	3	200.0	1	2		1	0		0	1	
Ipeiros (Epirus)	18	11	-38.9	4	1	-75.0	4	1	-75.0	15	15	0.0
Arta	5	3	-40.0	2	0		3	0		2	7	
Thesprotia	5	3	-40.0	0	1		1	0		4	3	
Ioannina	7	4	-42.9	1	0		0	1		8	4	
Preveza	1	1	0.0	1	0		0	0		1	1	
Thessalia (Thessaly)	17	21	23.5	4	5	25.0	5	2	-60.0	14	26	85.7
Karditsa	2	7	250.0	0	2		0	1		3	6	
Larissa	6	8	33.3	3	3		0	1		7	11	
Magnissia	8	6	-25.0	1	0		4	0		4	9	
Trikala	1	0	-100.0	0	0		1	0		0	0	
Ionian Nisia (Ionian Islands)	21	32	52.4	2	4	100.0	3	5	66.7	27	32	18.5
Zakynthos	6	8	33.3	0	2		1	3		8	5	
Kerkyra	8	10	25.0	1	2		0	1		10	8	
Kefallinia	3	5	66.7	0	0		2	1		2	5	
Lefkada	4	9	125.0	1	0		0	0		7	14	

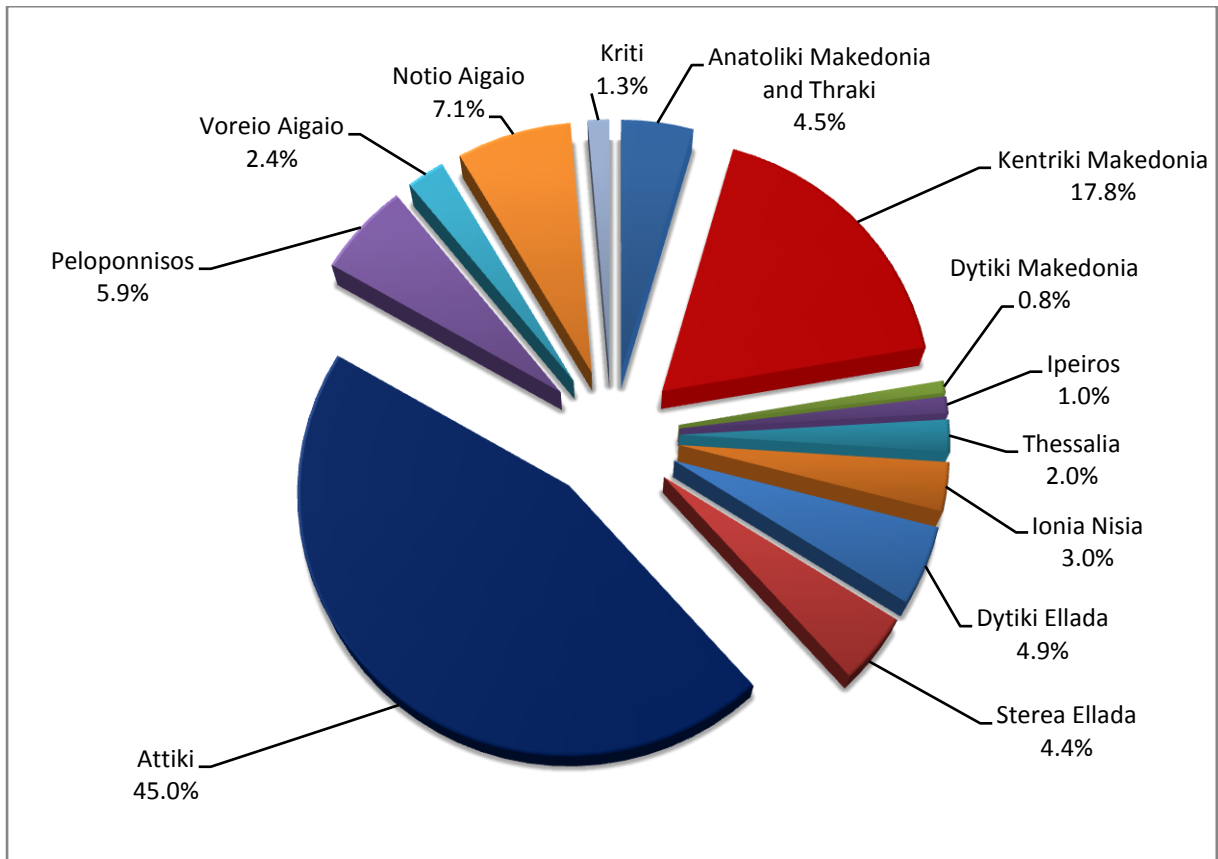
* Provisional data

Table 2: Road traffic accidents and casualties, by region and department, July 2018 and 2019* (Continued)

Region and department	Road accidents			Fatalities			Serious injuries			Slight injuries		
	2018	2019*	%	2018	2019*	%	2018	2019*	%	2018	2019*	%
Dytiki Ellada (West Greece)	51	52	2.0	3	6	100.0	3	2	-33.3	52	60	15.4
Etolia & Akarnania	16	21	31.3	2	1		2	0		17	24	
Achaia	26	27	3.8	0	2		0	2		28	30	
Ilia	9	4	-55.6	1	3		1	0		7	6	
Stereia Ellada	52	46	-11.5	10	1	-90.0	8	2	-75.0	54	56	3.7
Viotia	6	9	50.0	1	1		1	0		4	12	
Evia	20	22	10.0	3	0		5	1		18	28	
Evrytania	3	1	-66.7	2	0		0	0		3	1	
Fthiotida	16	12	-25.0	3	0		2	1		16	13	
Fokida	7	2	-71.4	1	0		0	0		13	2	
Attiki (Attica)	428	475	11.0	11	9	-18.2	18	27	50.0	515	524	1.7
Peloponnisos (Peloponnese)	56	62	10.7	3	6	100.0	5	5	0.0	69	76	10.1
Argolida	9	11	22.2	2	1		0	1		12	15	
Arkadia	7	13	85.7	0	1		0	0		9	17	
Korinthia	29	19	-34.5	1	1		5	1		34	20	
Lakonia	3	6	100.0	0	2		0	1		4	5	
Messinia	8	13	62.5	0	1		0	2		10	19	
Voreio Aigaio (North Aegean)	35	25	-28.6	1	4	300.0	1	1	0.0	42	27	-35.7
Lesvos	22	13	-40.9	1	1		0	0		26	15	
Samos	11	11	0.0	0	2		1	1		14	12	
Chios	2	1	-50.0	0	1		0	0		2	0	
Notio Aigaio (South Aegean)	83	75	-9.6	13	6	-53.8	12	6	-50.0	88	93	5.7
Dodekanissos	29	34	17.2	7	6		5	3		31	38	
Kyklades	54	41	-24.1	6	0		7	3		57	55	
Kriti (Crete)	13	14	7.7	4	9	125.0	1	2	100.0	10	11	10.0
Iraklio	7	10	42.9	3	7		0	1		5	9	
Lassithi	0	1	-	0	0		0	0		0	1	
Rethymno	1	0	-100.0	0	0		0	0		1	0	
Chania	5	3	-40.0	1	2		1	1		4	1	

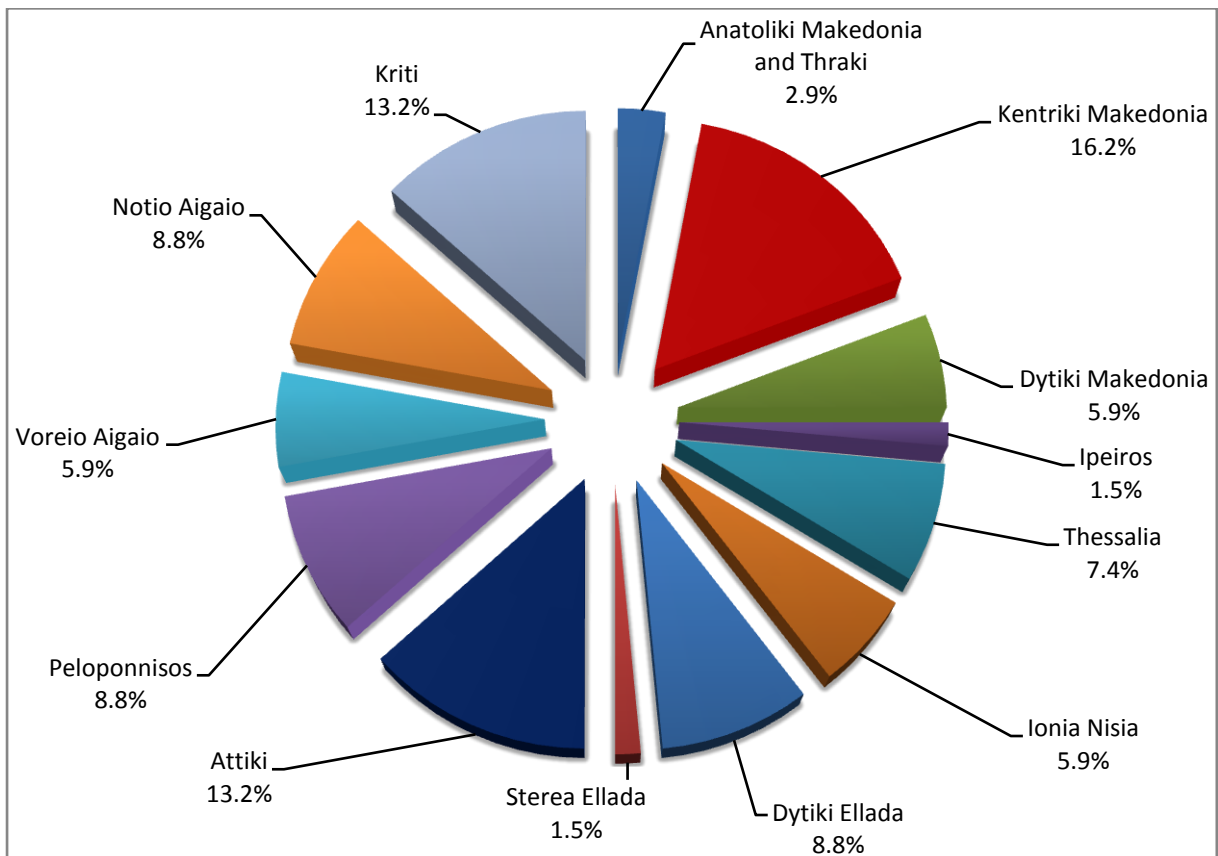
* Provisional data

Graph 3: Road traffic accidents by region, July 2019 *



* Provisional data

Graph 4: Fatalities by region, July 2019 *



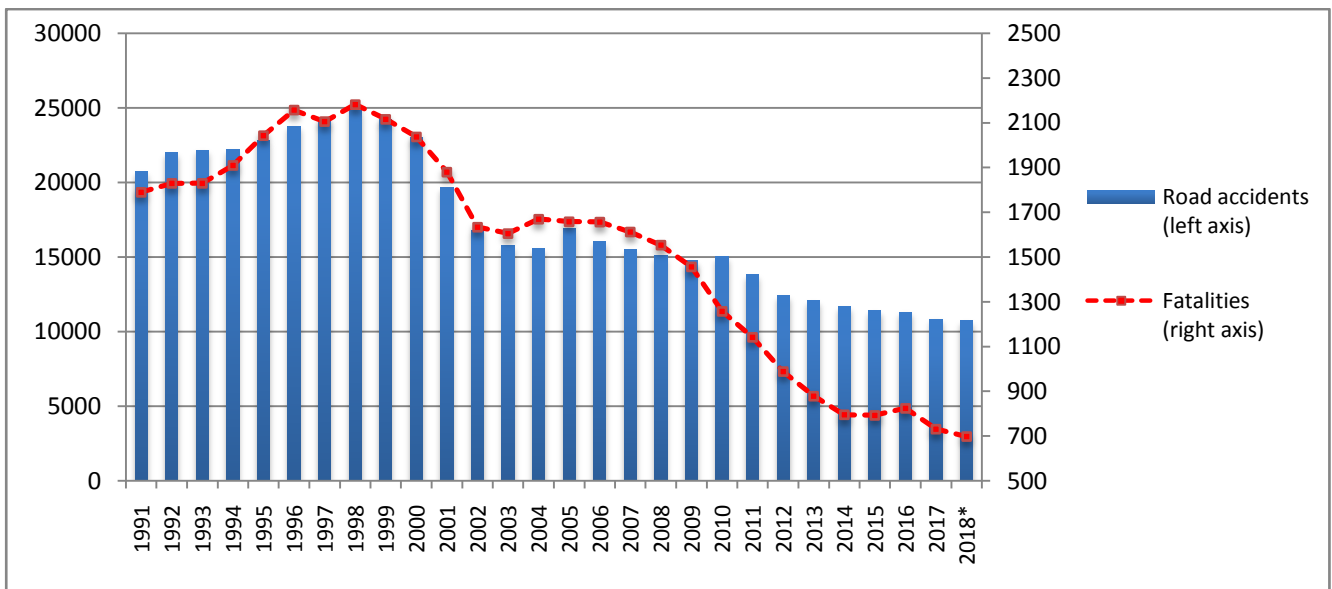
* Provisional data

Table 3: Road traffic accidents and casualties, January - July 2017 - 2019*

	2017		2018		2019 *
	January - July	Total year	January - July	Total year*	January - July
Road accidents	6,063	10,848	6,042	10,738	6,139
<i>Annual change (%)</i>			-0.3	-1.0	1.6
Fatalities	390	731	375	698	382
<i>Annual change (%)</i>			-3.8	-4.5	1.9
Serious injuries	387	706	390	724	365
<i>Annual change (%)</i>			0.8	2.5	-6.4
Slight injuries	7,064	12,565	6,935	12,378	6,857
<i>Annual change (%)</i>			-1.8	-1.5	-1.1

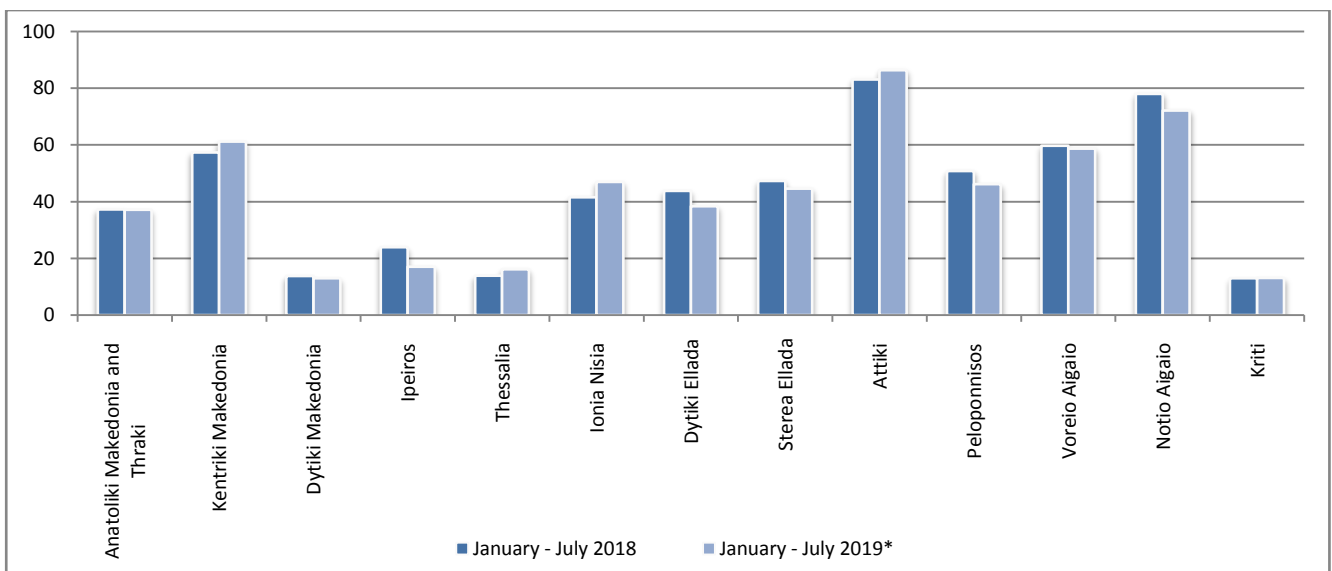
* Provisional data

Graph 5: Total road traffic accidents and fatalities, 1991-2018*



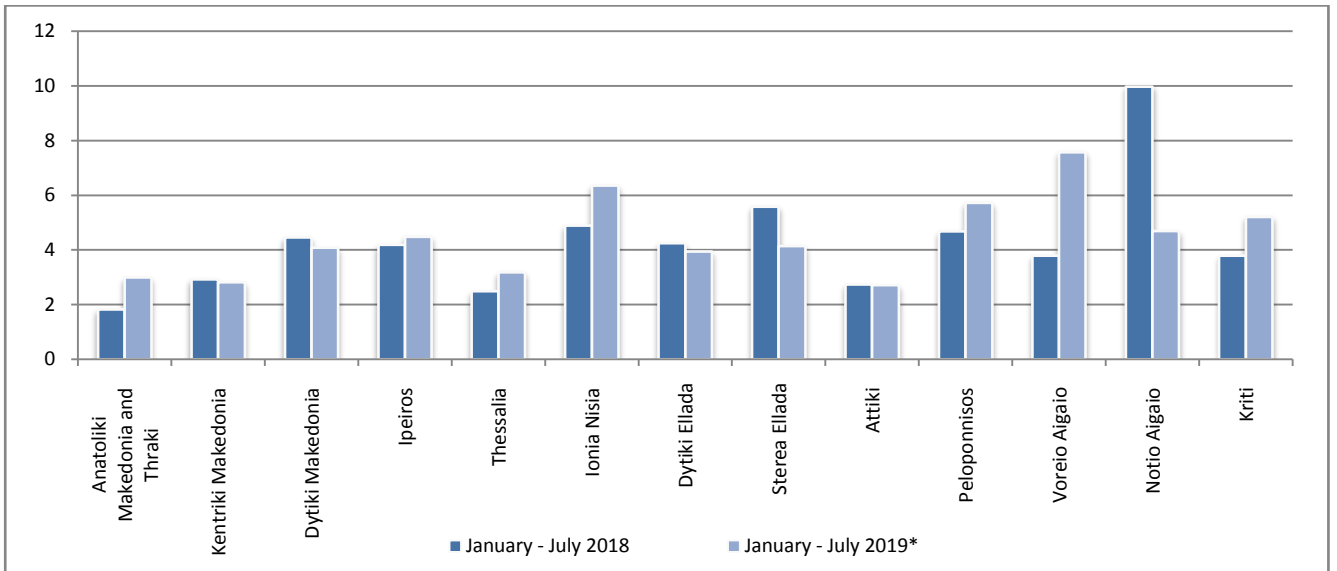
* Provisional data for the period November - December 2018

Graph 6: Road traffic accidents per 100,000 inhabitants

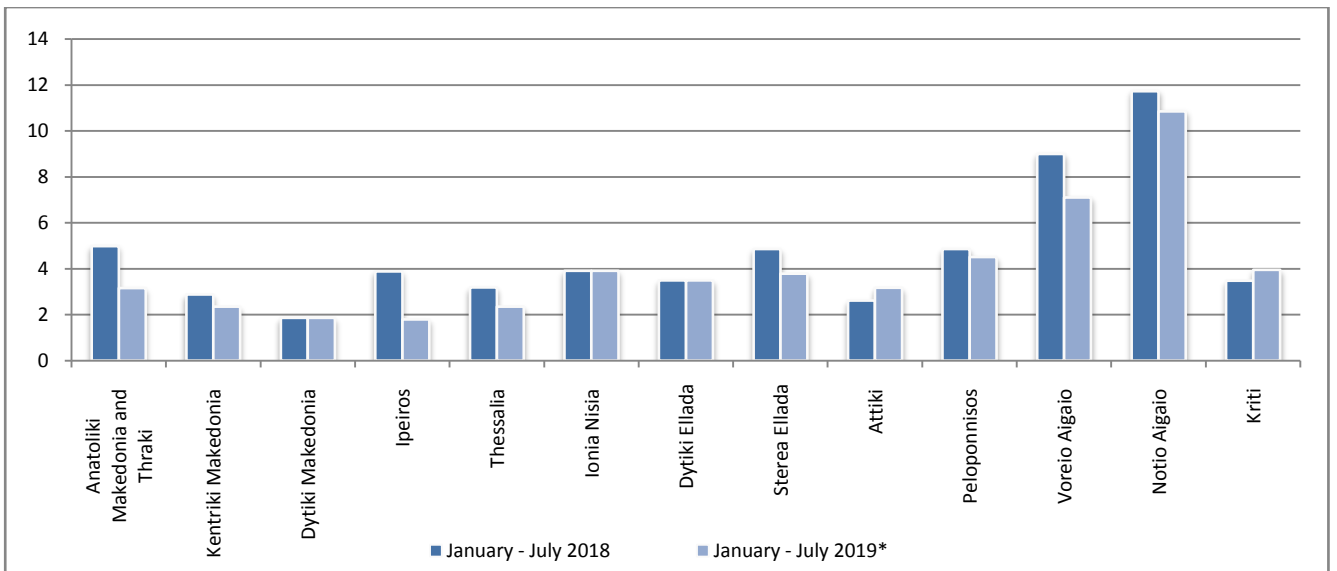


* Provisional data

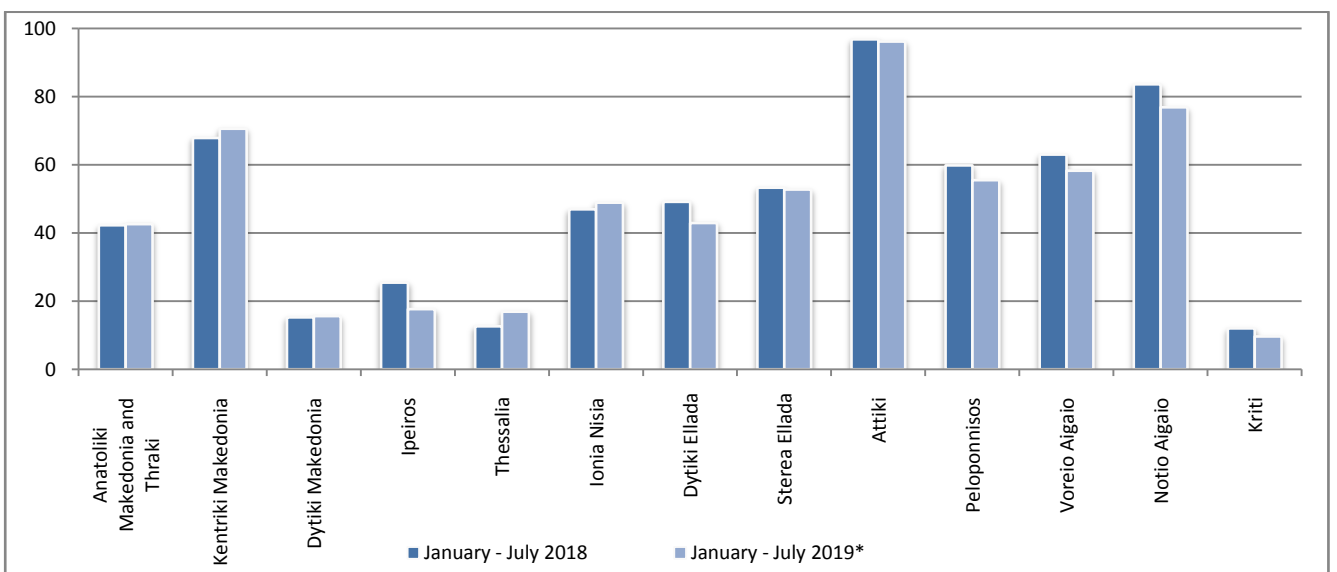
Graph 7: Fatalities per 100,000 inhabitants



Graph 8: Serious injuries per 100,000 inhabitants



Graph 9: Slight injuries per 100,000 inhabitants



* Provisional data

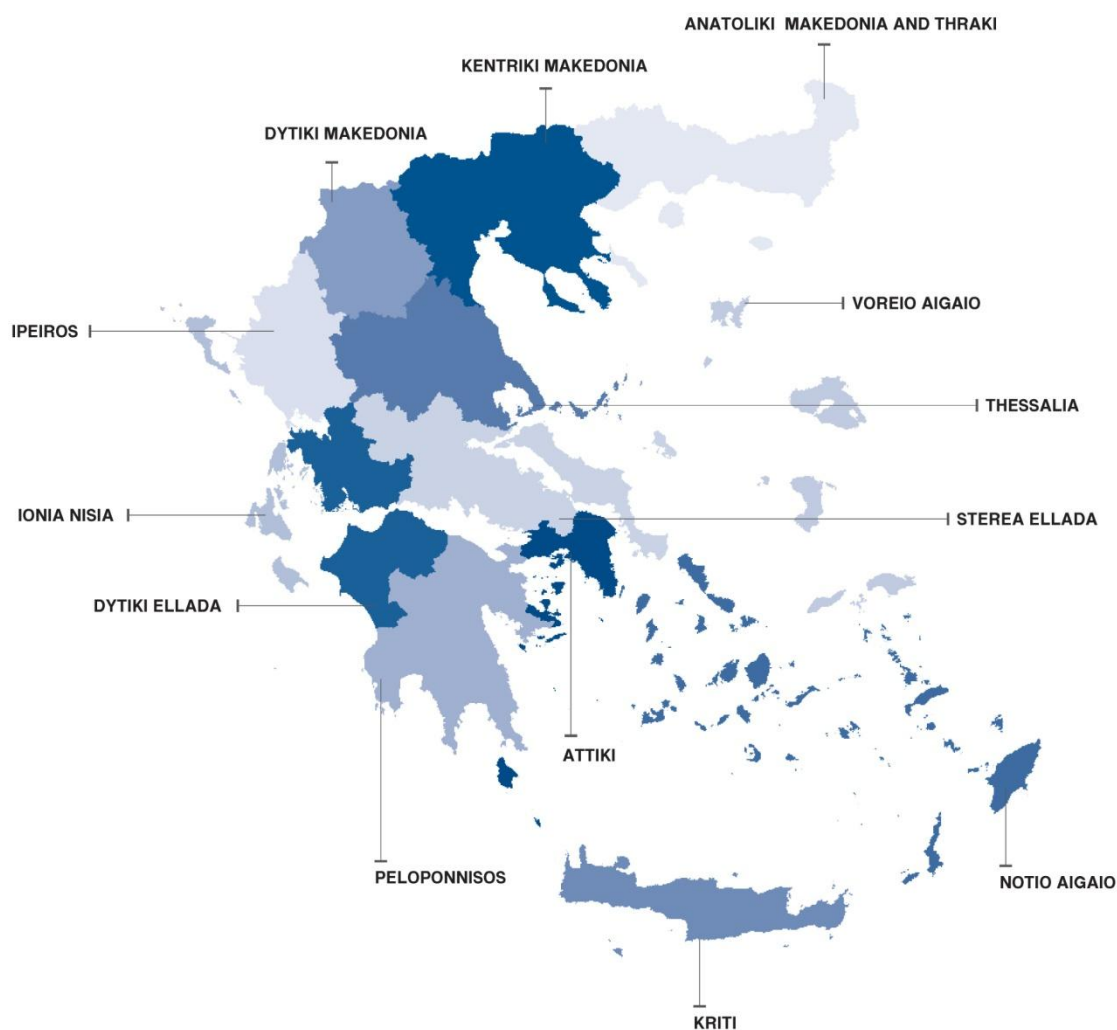
EXPLANATORY NOTES

Survey on Road Traffic Accidents

The Survey on Road Traffic Accidents is conducted on a monthly basis and it records, for each region (see map) and department of Greece and for each month separately, the number of accidents resulting in death or injury, as well as the number of persons injured by categories (drivers, passengers, pedestrians).

On a yearly basis road traffic accidents are further analyzed. The competent agencies for filling in/collecting the forms on road accidents are the local Police Authorities and the local Port Authorities of Greece.

The lower level of analysis for the place where an injury road accident occurred is the Municipal – Local Commune, which is described by a 8-digit geographic code. Data are collected on a monthly basis. The main variables are the following: place of accident, kind of road, casualties, conditions of road surface and type of road.



Legal basis

The Survey on Road Traffic Accidents is governed by Council Decision 93/704 of the European Community.

Reference period

Monthly.

Availability of data

Provisional data are available 2 months after the reference month.
Final data are available 10 months after the reference year.

National definitions **Road accident** (injury accident): Any accident involving at least one road motor vehicle in motion on a public road or square to which the public has access (excluding yards, industrial sites or vehicle depot of public transport enterprises), resulting in at least one injured or killed person. Accidents with only material damages are not included.

Fatality (Death): Any person killed immediately or dying within 30 days as a result of an injury accident (This national definition applies since 01.01.1996)

Person injured: Any person who sustained an injury as result of an injury accident, and who normally needs medical treatment.

Serious injury: Any person who sustained an injury as result of an injury accident, such as brain damages, mutilation, multiple injuries, which may result in lack of awareness or which are life-threatening.

Slight injury: Any person injured who sustained minor and not life-threatening injuries.

Vehicle: Include motor vehicles, trolleybuses, motorcycles, bicycles, motorbikes, agricultural and road making machines, animal and hand-drawn vehicles. Railway vehicles are excluded, unless the road accident involves at least one of the aforementioned types of vehicles and therefore, railway vehicles are considered vehicles.

Methodology The forms of the survey are filled in by the local Police Authorities and the local Port Authorities as well.

References More information about Road Traffic Accidents is available on ELSTAT's website and more specifically at the link: www.statistics.gr > Population, Social Conditions > Accidents > Road Traffic Accidents.
It should be noted that previous press releases and time series are available on ELSTAT's website: www.statistics.gr