



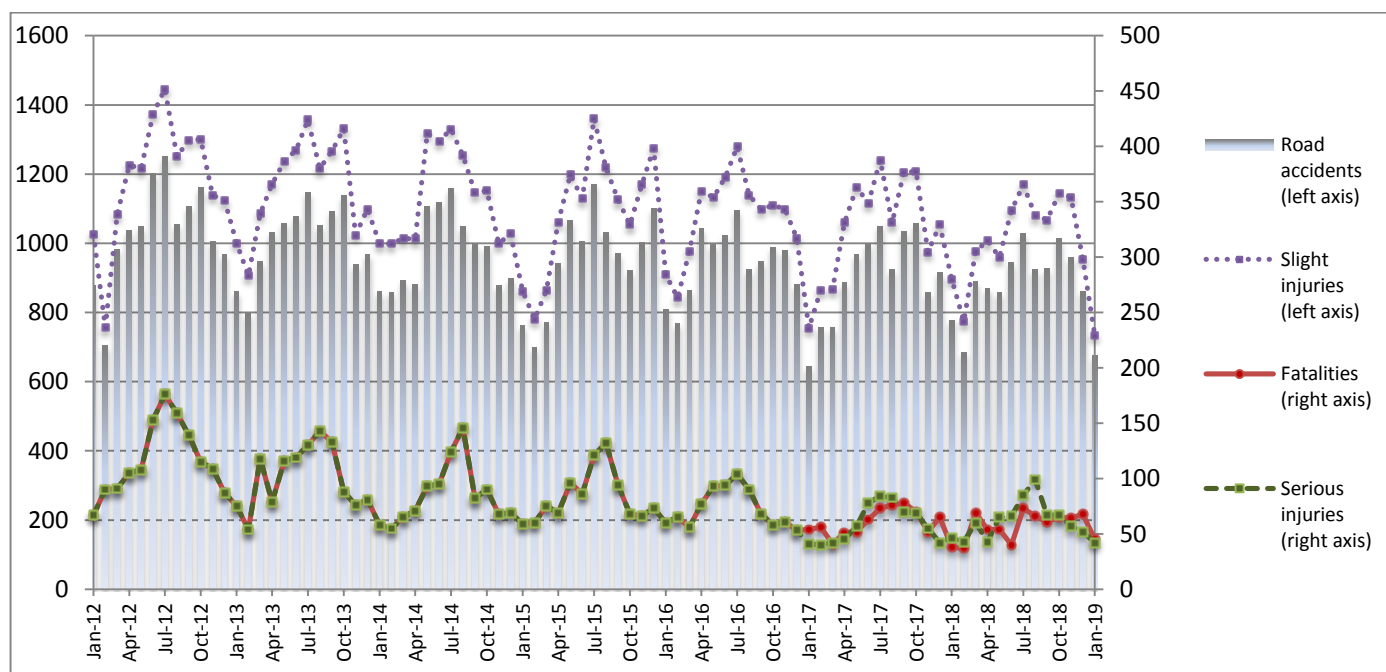
## PRESS RELEASE

### ROAD ACCIDENTS: January 2019

The Hellenic Statistical Authority (ELSTAT) announces provisional<sup>1</sup> data on Road Accidents for January 2019. In particular, the road traffic accidents which occurred in Greece, resulting in death or injury, decreased by 13.1% in comparison with the corresponding month of 2018 (676 road accidents in January 2019, against 778 road accidents in January 2018).

The casualties of the injury-causing accidents that occurred in January 2019 were as follows: 45 deaths, 42 serious injuries and 735 slight injuries. In contrast, in January 2018 the corresponding figures were: 38 deaths, 46 serious injuries and 897 slight injuries. Therefore, road accident casualties in January 2019 increased by 18.4% for deaths, decreased by 8.7% for serious injuries and decreased by 18.1% for slight injuries.

**Graph 1: Road traffic accidents and casualties,  
January 2012 - January 2019**



Provisional data: May 18 –Jan 19

**Information:**

Social Statistics Division

Justice and Public Order Statistics Section

D. Athanasopoulou

Tel: +30 213 1352767, Fax : +30 213 1352764

e-mail: [d.athanasopoulou@statistics.gr](mailto:d.athanasopoulou@statistics.gr)

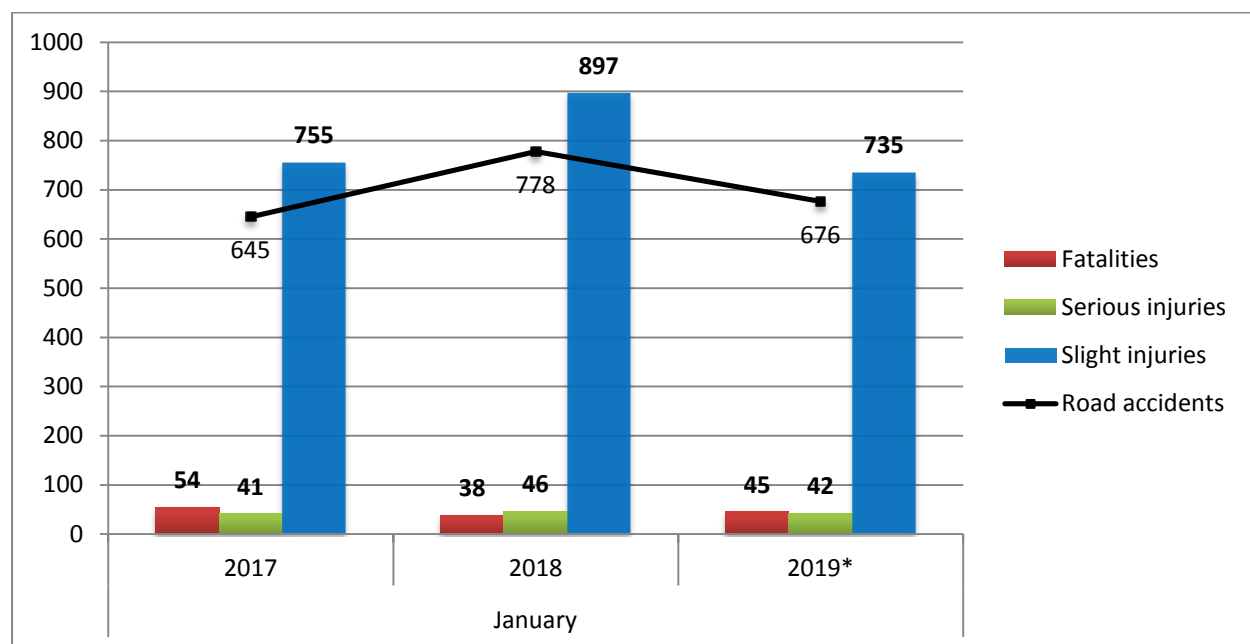
<sup>1</sup> Data for the reference year are provisional until the finalisation of the annual data, which become final 10 months after the end of the reference year. During these 10 months the provisional data are updated on the basis of the data of the Road Accident Forms which are transmitted to ELSTAT by Police Authorities.

**Table 1: Road traffic accidents and casualties, January 2017-2019\***

	January				
	2017	2018	2018/2017 (%)	2019*	2019*/2018 (%)
<b>Road accidents</b>	<b>645</b>	<b>778</b>	20.6%	<b>676</b>	-13.1%
<b>Fatalities</b>	<b>54</b>	<b>38</b>	-29.6%	<b>45</b>	18.4%
<b>Total injuries</b>	<b>796</b>	<b>943</b>	18.5%	<b>777</b>	-17.6%
Serious injuries	41	46	12.2%	42	-8.7%
Slight injuries	755	897	18.8%	735	-18.1%

\* Provisional data

**Graph 2: Road traffic accidents and casualties, January 2017-2019\***



\* Provisional data

**Table 2: Road traffic accidents and casualties, by region and department, January 2018 – 2019\***

Region and Department	Road accidents			Fatalities			Serious injuries			Slight injuries		
	2018	2019*	%	2018	2019*	%	2018	2019*	%	2018	2019*	%
<b>Greece Total</b>	<b>778</b>	<b>676</b>	<b>-13.1%</b>	<b>38</b>	<b>45</b>	<b>18.4%</b>	<b>46</b>	<b>42</b>	<b>-8.7%</b>	<b>897</b>	<b>735</b>	<b>-18.1%</b>
<b>Anatoliki Makedonia, Thraki (East Macedonia and Thrace)</b>	<b>19</b>	<b>26</b>	<b>36.8%</b>	<b>1</b>	<b>3</b>	<b>200.0%</b>	<b>2</b>	<b>4</b>	<b>100.0%</b>	<b>21</b>	<b>24</b>	<b>14.3%</b>
Drama	4	4	0.0%	0	1		1	0		5	3	
Evros	5	7	40.0%	1	0		0	0		6	8	
Kavala	7	8	14.3%	0	0		1	3		7	8	
Xanthi	3	1	-66.7%	0	0		0	0		3	1	
Rodopi	0	6	-	0	2		0	1		0	4	
<b>Kentriki Makedonia (Central Macedonia)</b>	<b>147</b>	<b>128</b>	<b>-12.9%</b>	<b>5</b>	<b>6</b>	<b>20.0%</b>	<b>4</b>	<b>4</b>	<b>0.0%</b>	<b>178</b>	<b>141</b>	<b>-20.8%</b>
Imathia	1	1	0.0%	0	0		0	0		1	1	
Thessaloniki	132	113	-14.4%	2	1		4	4		161	128	
Kilkis	4	5	25.0%	0	1		0	0		4	5	
Pella	3	2	-33.3%	1	0		0	0		3	2	
Pieria	0	2	-	0	1		0	0		0	1	
Serres	2	1	-50.0%	2	2		0	0		3	1	
Chalkidiki	5	4	-20.0%	0	1		0	0		6	3	
<b>Dytiki Makedonia (West Macedonia)</b>	<b>7</b>	<b>2</b>	<b>-71.4%</b>	<b>1</b>	<b>0</b>	<b>-100.0%</b>	<b>3</b>	<b>0</b>	<b>-100.0%</b>	<b>5</b>	<b>7</b>	<b>40.0%</b>
Grevena	0	1	-	0	0		0	0		0	4	
Kastoria	0	0	-	0	0		0	0		0	0	
Kozani	6	1	-83.3%	1	0		1	0		5	3	
Florina	1	0	-100.0%	0	0		2	0		0	0	
<b>Ipeiros (Epirus)</b>	<b>7</b>	<b>3</b>	<b>-57.1%</b>	<b>0</b>	<b>0</b>	<b>-</b>	<b>2</b>	<b>0</b>	<b>-100.0%</b>	<b>11</b>	<b>3</b>	<b>-72.7%</b>
Arta	1	0	-100.0%	0	0		1	0		1	0	
Thesprotia	2	1	-50.0%	0	0		1	0		5	1	
Ioannina	3	2	-33.3%	0	0		0	0		4	2	
Preveza	1	0	-100.0%	0	0		0	0		1	0	
<b>Thessalia (Thessaly)</b>	<b>13</b>	<b>11</b>	<b>-15.4%</b>	<b>2</b>	<b>1</b>	<b>-50.0%</b>	<b>3</b>	<b>2</b>	<b>-33.3%</b>	<b>12</b>	<b>11</b>	<b>-8.3%</b>
Karditsa	4	2	-50.0%	1	0		1	0		3	2	
Larissa	2	3	50.0%	0	1		0	1		4	4	
Magnissia	4	2	-50.0%	0	0		1	1		3	1	
Trikala	3	4	33.3%	1	0		1	0		2	4	
<b>Ionian Nisia (Ionian Islands)</b>	<b>10</b>	<b>3</b>	<b>-70.0%</b>	<b>0</b>	<b>1</b>	<b>-</b>	<b>3</b>	<b>0</b>	<b>-100.0%</b>	<b>10</b>	<b>3</b>	<b>-70.0%</b>
Zakynthos	4	0	-100.0%	0	0		2	0		3	0	
Kerkyra	4	1	-75.0%	0	1		1	0		5	0	
Kefallinia	1	0	-100.0%	0	0		0	0		1	0	
Lefkada	1	2	100.0%	0	0		0	0		1	3	

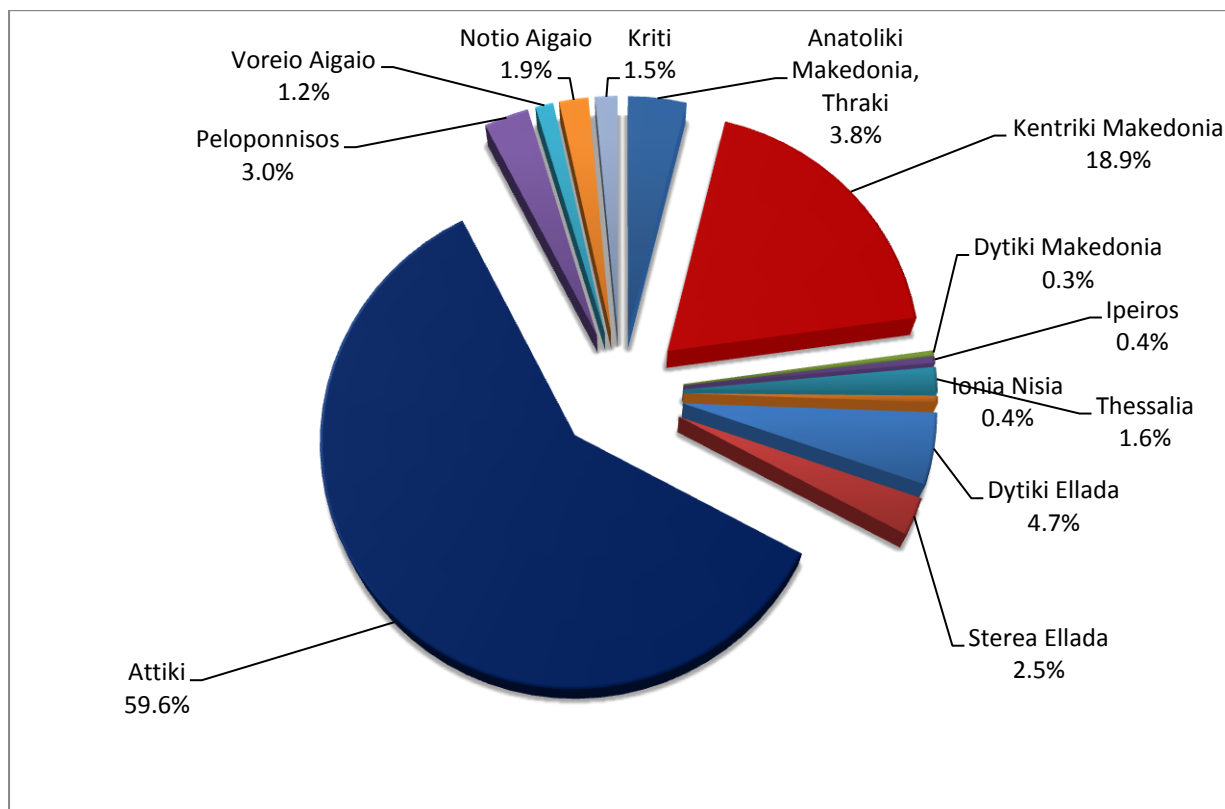
\* Provisional data

**Table 2: Road traffic accidents and casualties, by region and department, January 2018 – 2019\* (Continued)**

Region and Department	Road accidents			Fatalities			Serious injuries			Slight injuries		
	2018	2019*	%	2018	2019*	%	2018	2019*	%	2018	2019*	%
<b>Dytiki Ellada (West Greece)</b>	<b>35</b>	<b>32</b>	<b>-8.6%</b>	<b>3</b>	<b>4</b>	<b>33.3%</b>	<b>4</b>	<b>3</b>	<b>-25.0%</b>	<b>36</b>	<b>36</b>	<b>0.0%</b>
Etolia & Akarnania	11	16	45.5%	1	2		2	2		9	17	
Achaia	19	12	-36.8%	2	1		2	1		22	11	
Ilia	5	4	-20.0%	0	1		0	0		5	8	
<b>Stereia Ellada</b>	<b>29</b>	<b>17</b>	<b>-41.4%</b>	<b>3</b>	<b>4</b>	<b>33.3%</b>	<b>3</b>	<b>0</b>	<b>-100.0%</b>	<b>37</b>	<b>22</b>	<b>-40.5%</b>
Viotia	6	2	-66.7%	2	1		0	0		7	7	
Evia	9	9	0.0%	0	2		1	0		11	9	
Evrytania	0	1	-	0	1		0	0		0	0	
Fthiotida	12	3	-75.0%	1	0		2	0		17	4	
Fokida	2	2	0.0%	0	0		0	0		2	2	
<b>Attiki (Attica)</b>	<b>443</b>	<b>403</b>	<b>-9.0%</b>	<b>12</b>	<b>19</b>	<b>58.3%</b>	<b>17</b>	<b>17</b>	<b>0.0%</b>	<b>509</b>	<b>432</b>	<b>-15.1%</b>
<b>Peloponnisos (Peloponnese)</b>	<b>32</b>	<b>20</b>	<b>-37.5%</b>	<b>3</b>	<b>2</b>	<b>-33.3%</b>	<b>0</b>	<b>4</b>	<b>-</b>	<b>38</b>	<b>30</b>	<b>-21.1%</b>
Argolida	2	2	0.0%	0	0		0	0		6	2	
Arkadia	6	3	-50.0%	0	0		0	1		7	5	
Korinthia	14	8	-42.9%	0	0		0	2		17	15	
Lakonia	5	2	-60.0%	3	0		0	0		3	3	
Messinia	5	5	0.0%	0	2		0	1		5	5	
<b>Voreio Aigaio (North Aegean)</b>	<b>15</b>	<b>8</b>	<b>-46.7%</b>	<b>3</b>	<b>0</b>	<b>-100.0%</b>	<b>1</b>	<b>2</b>	<b>100.0%</b>	<b>18</b>	<b>7</b>	<b>-61.1%</b>
Lesvos	8	5	-37.5%	1	0		0	2		12	4	
Samos	5	1	-80.0%	0	0		0	0		6	1	
Chios	2	2	0.0%	2	0		1	0		0	2	
<b>Notio Aigaio (South Aegean)</b>	<b>13</b>	<b>13</b>	<b>0.0%</b>	<b>0</b>	<b>0</b>	<b>-</b>	<b>3</b>	<b>3</b>	<b>0.0%</b>	<b>13</b>	<b>12</b>	<b>-7.7%</b>
Dodekanissos	5	7	40.0%	0	0		1	2		5	7	
Kyklades	8	6	-25.0%	0	0		2	1		8	5	
<b>Kriti (Crete)</b>	<b>8</b>	<b>10</b>	<b>25.0%</b>	<b>5</b>	<b>5</b>	<b>0.0%</b>	<b>1</b>	<b>3</b>	<b>200.0%</b>	<b>9</b>	<b>7</b>	<b>-22.2%</b>
Iraklio	4	4	0.0%	3	1		1	0		6	4	
Lassithi	3	3	0.0%	2	2		0	2		2	3	
Rethymno	0	0	-	0	0		0	0		0	0	
Chania	1	3	200.0%	0	2		0	1		1	0	

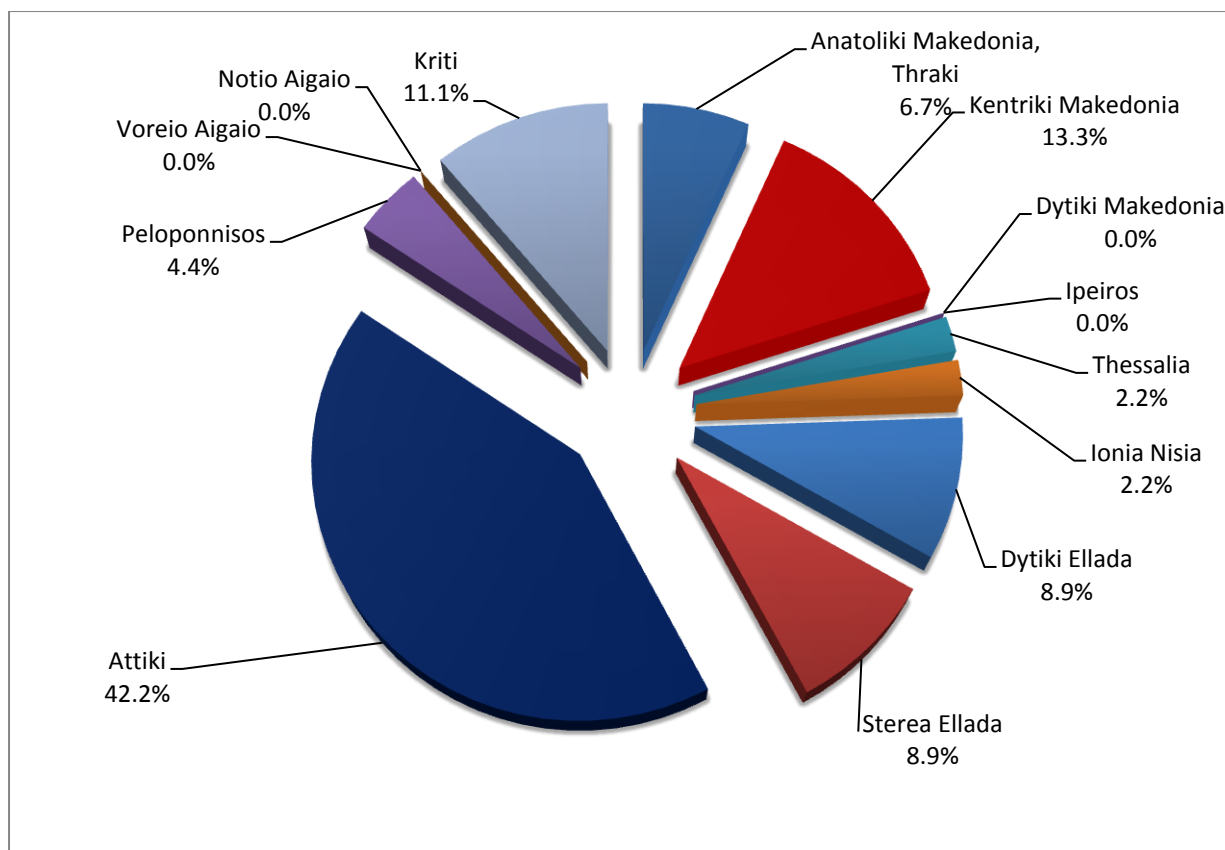
\* Provisional data

**Graph 3: Road traffic accidents by region,  
January 2019 \***



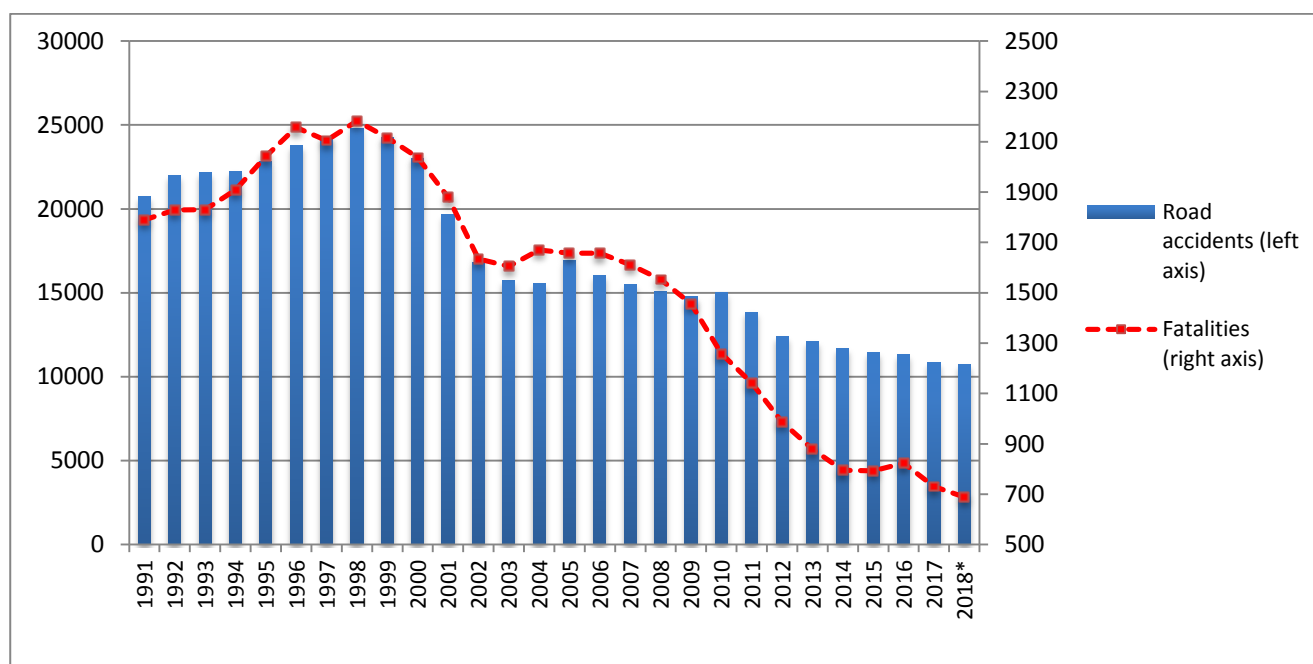
\* Provisional data

**Graph 4: Fatalities by region,  
January 2019 \***



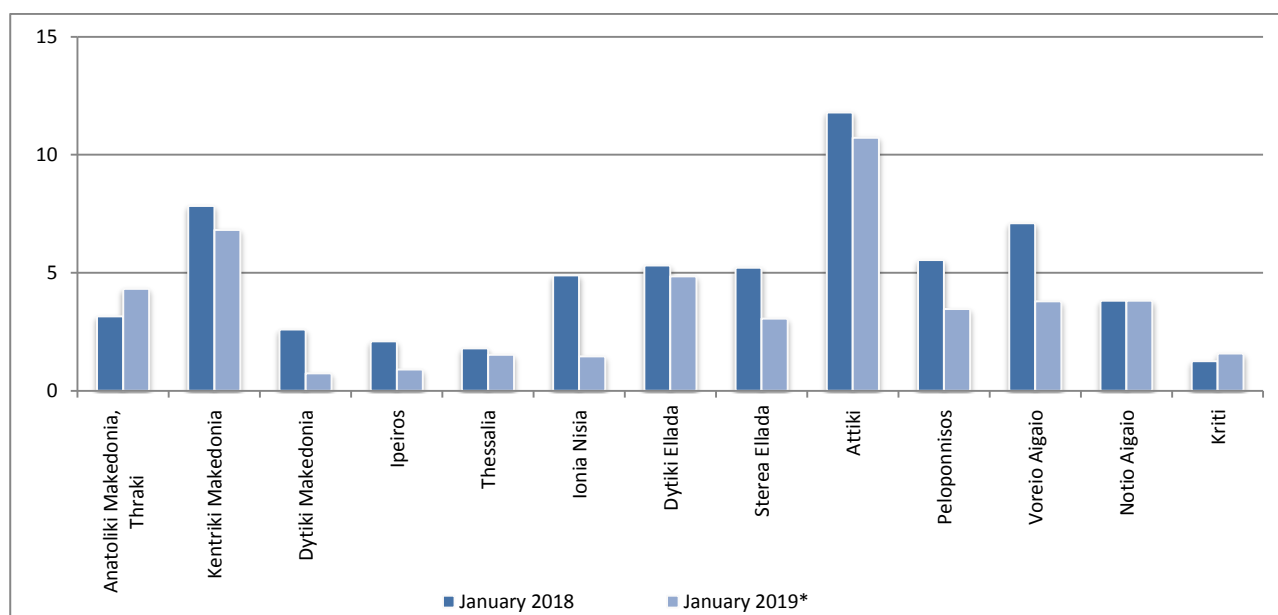
\* Provisional data

**Graph 5: Total road traffic accidents and fatalities, 1991-2018\***



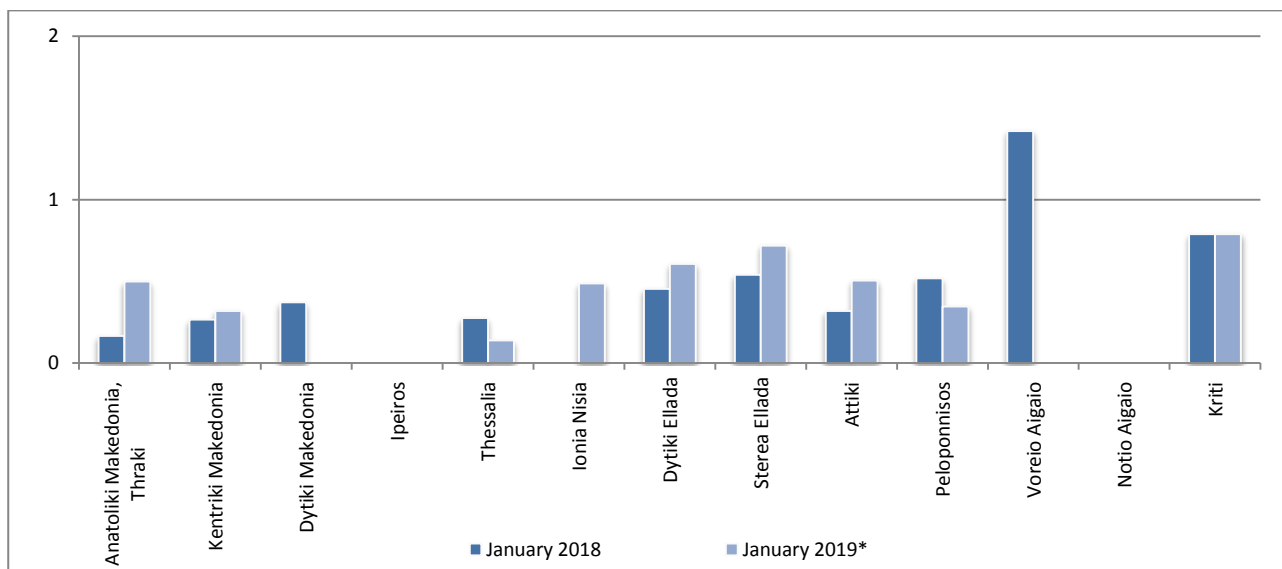
\* Provisional data May – Dec 18

**Graph 6: Road accidents per 100,000 inhabitants**

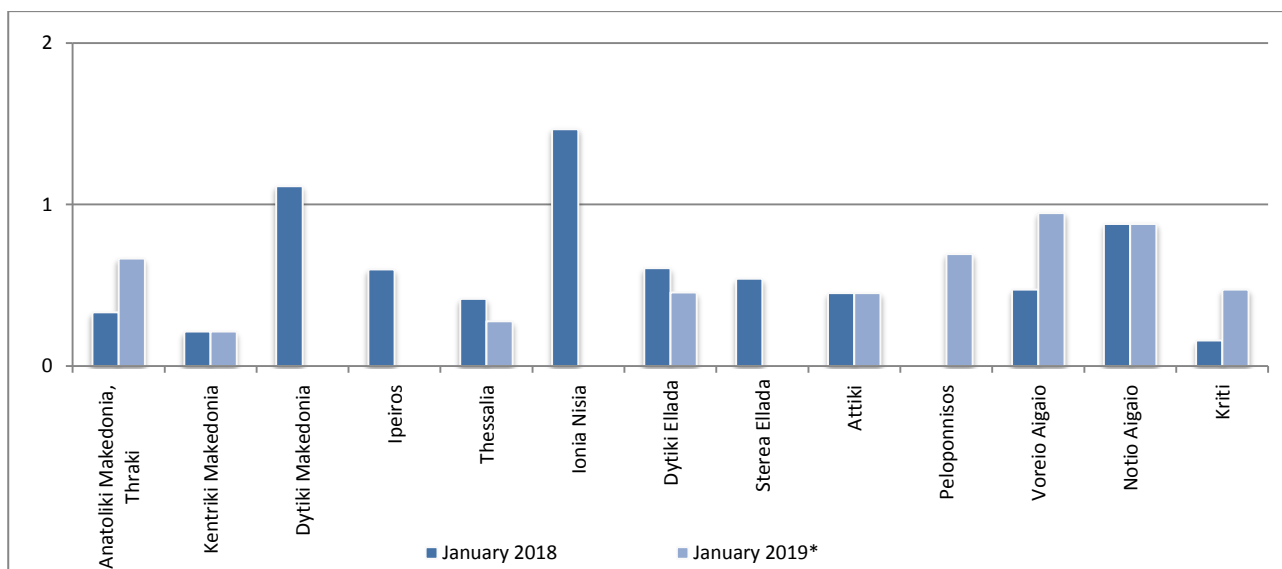


\* Provisional data

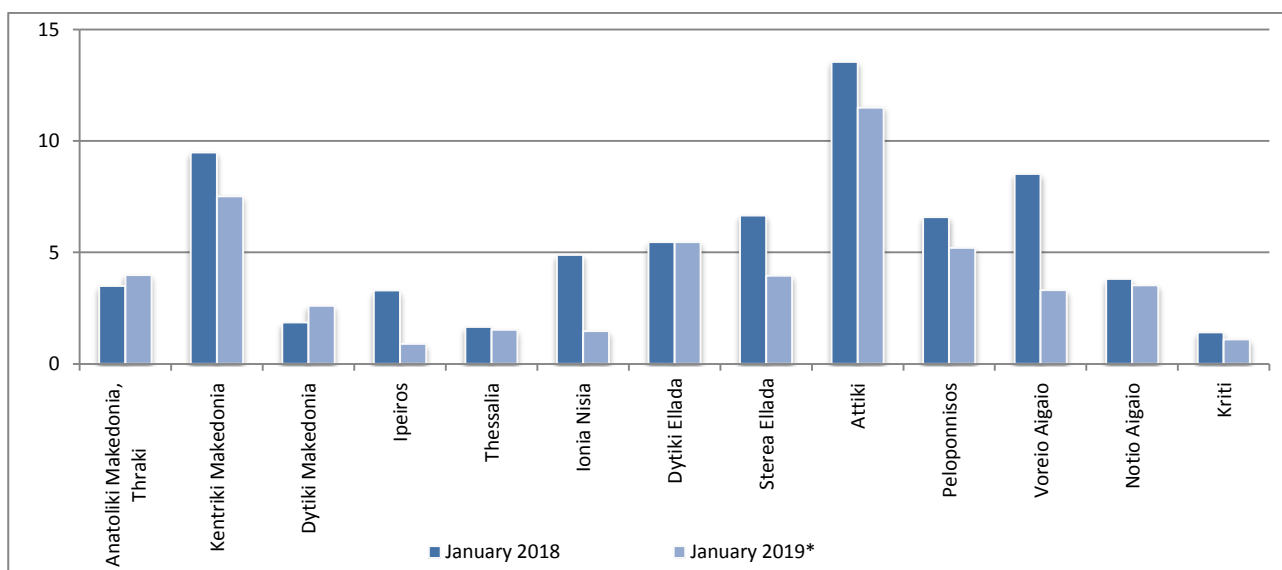
**Graph 7: Fatalities per 100,000 inhabitants**



**Graph 8: Serious injuries per 100,000 inhabitants**



**Graph 9: Slight injuries per 100,000 inhabitants**



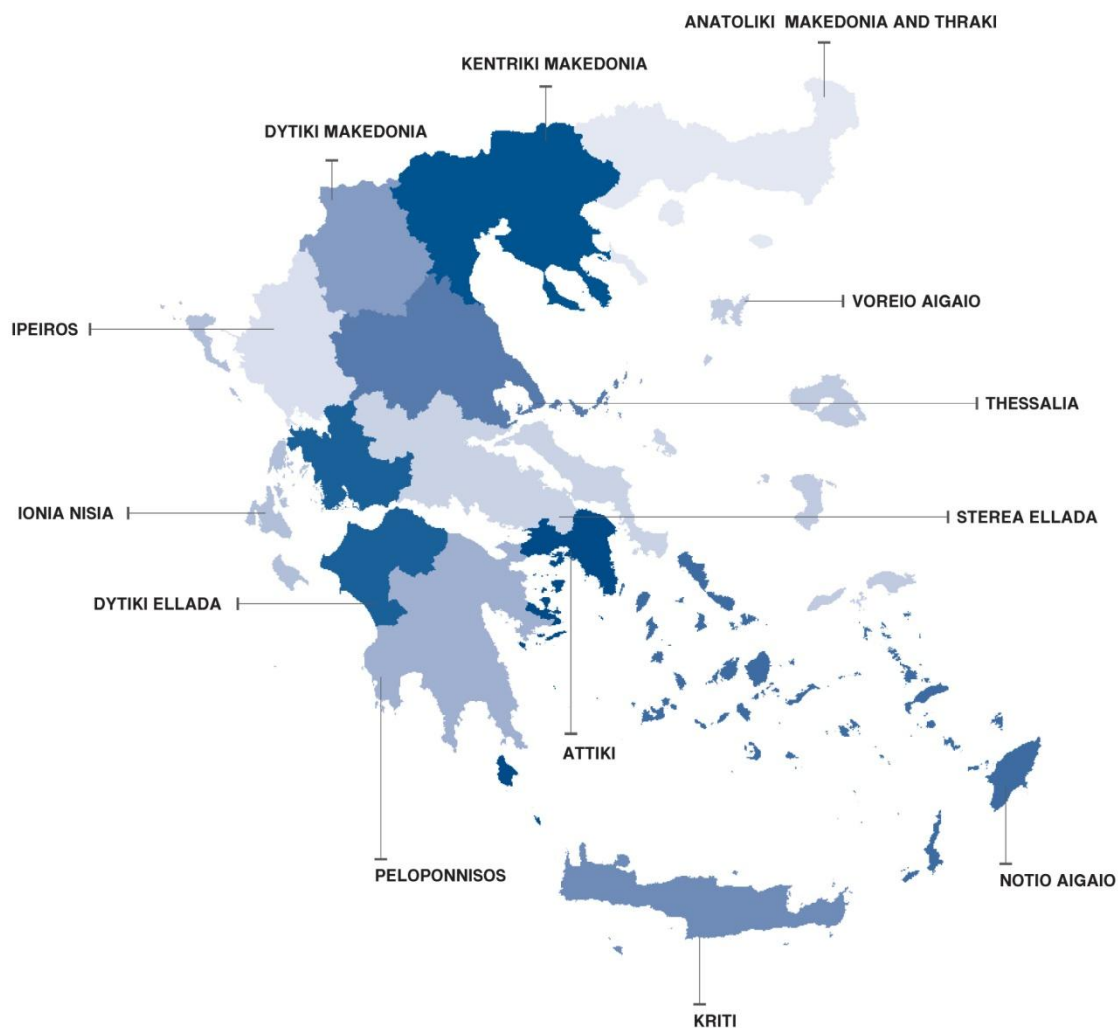
\* Provisional data

## Explanatory Notes

**Survey on Road Accidents** The survey on road accidents is conducted on a monthly basis and it records, for each department of Greece and for each month separately, the number of accidents resulting in death or injury, as well as the number of persons injured by categories (drivers, passengers, pedestrians).

On a yearly basis, road accidents are further analyzed. The competent agencies for filling in/collecting the forms on road accidents are the local Police Authorities and the local Port Authorities of Greece.

The lower level of analysis for the place where an injury road accident occurred is the Municipal – Local Commune, which is described by a 8-digit geographic code. Data are collected on a monthly basis. The main variables are the following: place of accident, kind of road, casualties, conditions of road surface and type of road.



**Legal basis** The Survey on Road Traffic Accidents is governed by Council Decision 93/704 of the European Community.

**Reference Period** Monthly.

**Availability of Data** Provisional data are available 2 months after the reference month.  
Final data are available 10 months after the reference year.



<b>National Definitions</b>	<p><b>Road accident</b> (injury accident): Any accident involving at least one road motor vehicle in motion on a public road or square to which the public has access (excluding yards, industrial sites or vehicle depot of public transport enterprises), resulting in at least one injured or killed person. Accidents with only material damages are not included.</p> <p><b>Fatality (Death):</b> Any person killed immediately or dying within 30 days as a result of an injury accident (This national definition applies since 01.01.1996)</p> <p><b>Person injured:</b> Any person who sustained an injury as result of an injury accident, and who normally needs medical treatment.</p> <p><b>Serious injury:</b> Any person who sustained an injury as result of an injury accident, such as brain damages, mutilation, multiple injuries, which may result in lack of awareness or which are life-threatening.</p> <p><b>Slight injury:</b> Any person injured who sustained minor and not life-threatening injuries.</p> <p><b>Vehicle:</b> Include motor vehicles, trolleybuses, motorcycles, bicycles, motorbikes, agricultural and road making machines, animal and hand-drawn vehicles. Railway vehicles are excluded, unless the road accident involves at least one of the aforementioned types of vehicles and therefore, railway vehicles are considered vehicles.</p>
<b>Methodology</b>	<p>The forms of the survey are filled in by the local Police Authorities and the local Port Authorities as well.</p>
<b>References</b>	<p>More information about road accidents is available on ELSTAT's website and more specifically at the link: <a href="http://www.statistics.gr">www.statistics.gr</a> &gt; Population &amp; Social Conditions &gt; Accidents &gt; Road Traffic Accidents. It should be noted that previous press releases and time series are available on ELSTAT's website: <a href="http://www.statistics.gr">www.statistics.gr</a></p>