



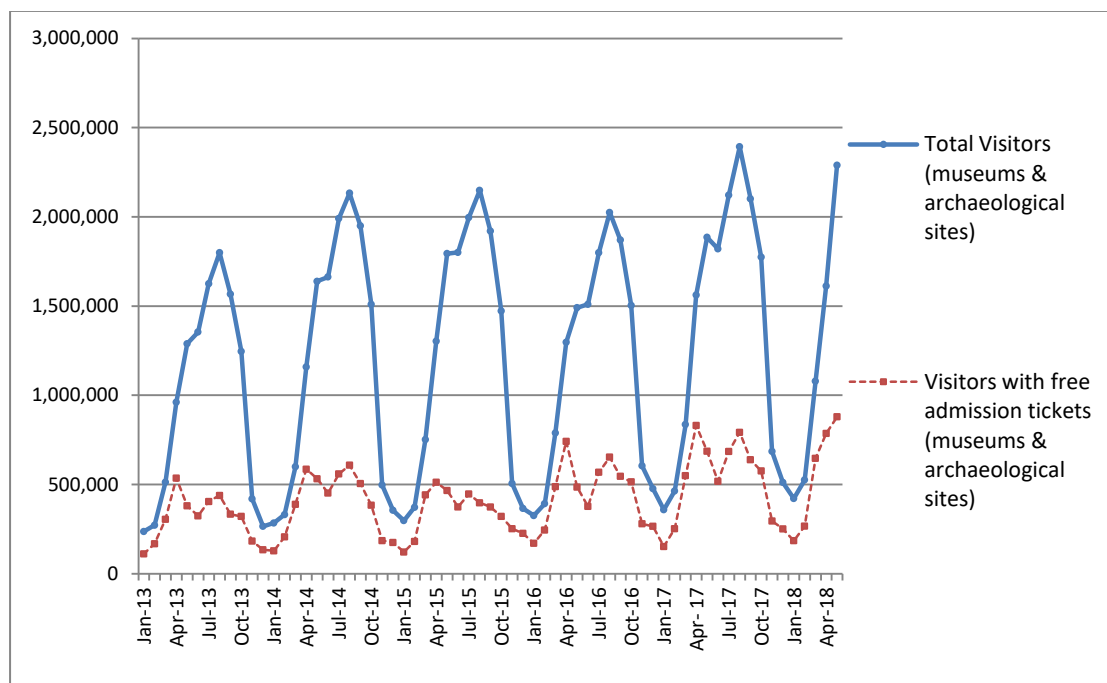
## PRESS RELEASE

### SURVEY ON MUSEUMS AND ARCHAEOLOGICAL SITES ATTENDANCE MAY 2018

The Hellenic Statistical Authority (ELSTAT) announces the results of the *Survey on Museums and Archaeological Sites Attendance* for May 2018. More specifically:

- In May 2018 compared with the corresponding month of 2017, Museums experienced an 18.2% increase in the number of visitors and a 20.2% increase in the number of free admission visitors as well as an 18.7% increase in their receipts (Table 1),
- In May 2018 compared with the corresponding month of 2017, the number of visitors at Archaeological sites recorded an increase of 21.5%, while an increase of 28.8% was observed in the number of free admission visitors and an 18.5% increase in the corresponding receipts (Table 1),
- During the five-month period from January to May 2018, an increase of 9.2% was observed in the number of visitors of Museums, while an increase of 5.5% was recorded in the number of free admission visitors and a 14.3% increase in the relevant receipts, in comparison with the corresponding period of 2017 (Table 2),
- As regards Archaeological sites, during the five-month period from January to May 2018, an increase of 19.4 % was recorded in the number of visitors, while a 15.1% increase was observed in the number of free admission visitors and a 20.0% increase in the relevant receipts, in comparison with the corresponding period of 2017 (Table 2),

**Graph 1: Visitors of Museums and Archaeological sites (Jan 2013 – May 2018)**



**Information:**

Social Statistics Division

Section of Culture and Sports statistics,

Argyri Pateraki (Tel: +30 213 1352129, e-mail: [ar.pateraki@statistics.gr](mailto:ar.pateraki@statistics.gr))

**TABLE 1: VISITORS OF MUSEUMS AND ARCHAEOLOGICAL SITES - TOTAL RECEIPTS  
(MAY 2017 & MAY 2018)**

<b>I. VISITORS</b>			
<b>Museums and Archaeological sites</b>	<b>2017</b>	<b>2018</b>	<b>Change 2018/2017</b>
<b>Total number of visitors (A+B)</b>	<b>1,899,040<sup>(3)</sup></b>	<b>2,289,175</b>	<b>20.5%</b>
<b>A. Museums (C+E)</b>	<b>559,632</b>	<b>661,231</b>	<b>18.2%</b>
Acropolis Museum	154,674	191,087	23.5%
National Archaeological	58,837	59,914	1.8%
Ancient Olympia	19,242	20,957	8.9%
Palace of the Grand Master (Rhodes)	27,460	28,306	3.1%
Herakleion Archaeological (Crete)	43,206	65,295	51.1%
White Tower	19,301	19,439	0.7%
Delphi	28,909	33,184	14.8%
Other museums	208,003	243,049	16.8%
<b>B. Archaeological Sites (D+F)</b>	<b>1,339,408<sup>(3)</sup></b>	<b>1,627,944</b>	<b>21.5%</b>
Epidavros <sup>(1)</sup>	70,066	87,407	24.7%
The Acropolis of Mycenae & Atreus' Treasure <sup>(3)</sup>	51,447 <sup>(3)</sup>	68,229	32.6%
The Acropolis of Athens <sup>(2)</sup>	316,524	372,854	17.8%
Sounio	26,942	36,288	34.7%
The Acropolis of Lindos	49,416	61,289	24.0%
Royal Tombs of Vergina	32,846	36,524	11.2%
Ancient Olympia	55,427	64,134	15.7%
Knossos (Crete)	67,733	91,110	34.5%
Phaistos (Crete)	10,488	14,406	37.4%
Ancient Korinthos <sup>(1)</sup>	24,932	27,673	11.0%
Mystras <sup>(1)</sup>	16,130	20,337	26.1%
Delphi	38,316	48,385	26.3%
Other archaeological sites	579,141	699,308	20.7%
<b>II. VISITORS WHO PAID TICKET</b>			
	<b>2017</b>	<b>2018</b>	<b>Change 2018/2017</b>
<b>Total number of visitors who paid ticket (C+D)</b>	<b>1,199,249</b>	<b>1,409,979</b>	<b>17.6%</b>
C. Museums	301,735	351,231	16.4%
D. Archaeological sites	897,514	1,058,748	18.0%
<b>III. VISITORS WITH FREE ADMISSION TICKETS</b>			
	<b>2017</b>	<b>2018</b>	<b>Change 2018/2017</b>
<b>Total number of visitors with free admission ticket (E+F)</b>	<b>699,791<sup>(3)</sup></b>	<b>879,196</b>	<b>25.6%</b>
E. Museums	257,897	310,000	20.2%
F. Archaeological sites	441,894 <sup>(3)</sup>	569,196	28.8%
<b>IV. RECEIPTS (euros)</b>			
	<b>2017</b>	<b>2018</b>	<b>Change 2018/2017</b>
<b>Total Receipts (G+H)</b>	<b>12,461,470,00</b>	<b>14,774,211,00</b>	<b>18.6%</b>
G. Museums	1,795,010.00	2,131,117.00	18.7%
H. Archaeological sites	10,666,460.00	12,643,094.00	18.5%

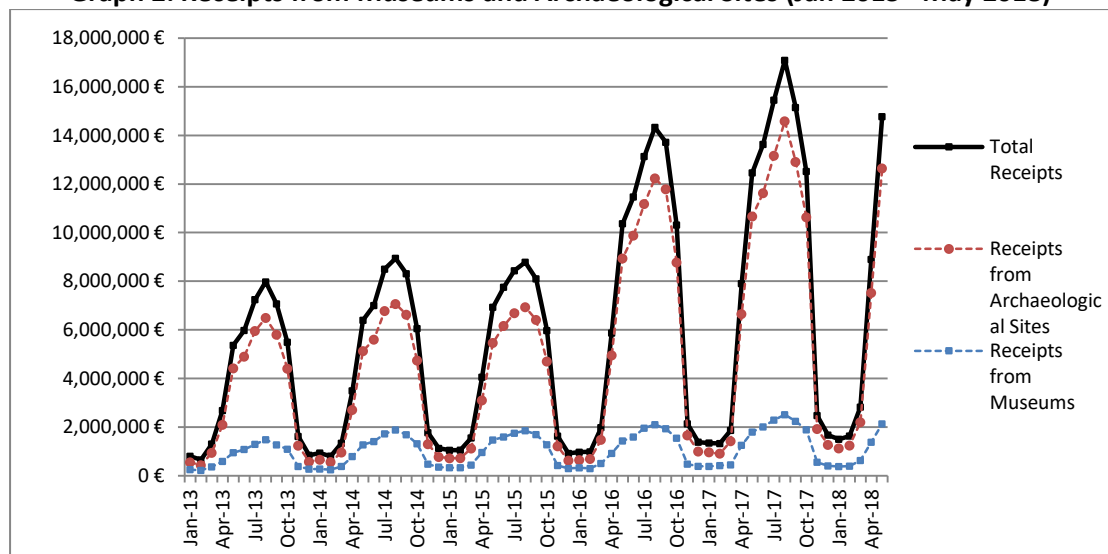
<sup>(1)</sup> Flat rate ticket, valid both for the museum and the archaeological site,

<sup>(2)</sup> From May 2017 onwards, the data for the number of tickets in the archaeological site of the Acropolis of Athens include the tickets of the Ancient Theatre of Dionysos.

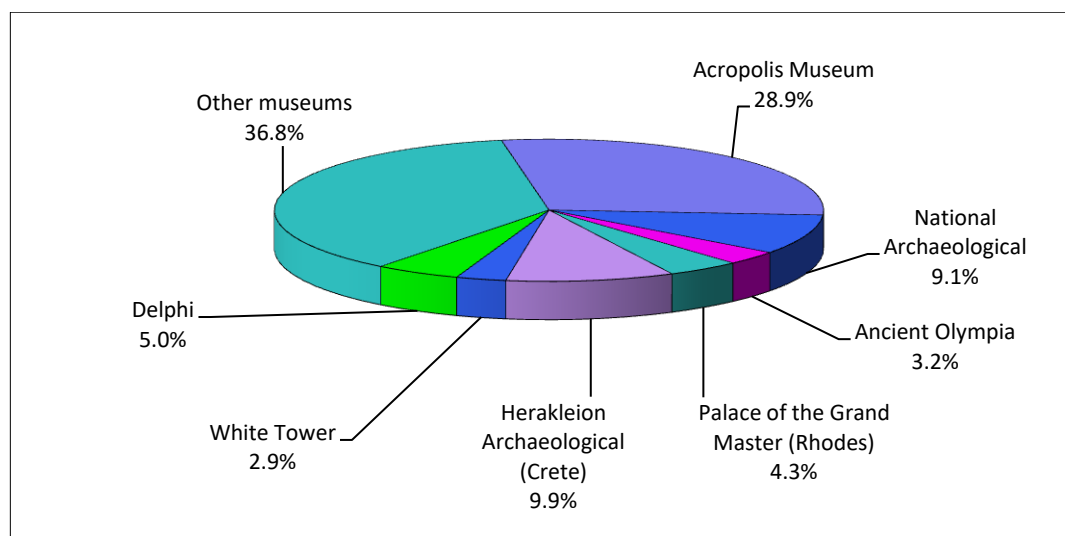
<sup>(3)</sup> The data on the number of visitors to the archaeological site of the Acropolis of Mycenae & Atreus' Treasure for May 2017 have been revised

The following graphs depict the evolution of the receipts (Graph 2), as well as the number of visitors by Museum and Archaeological Site (Graphs 3 and 4, respectively),

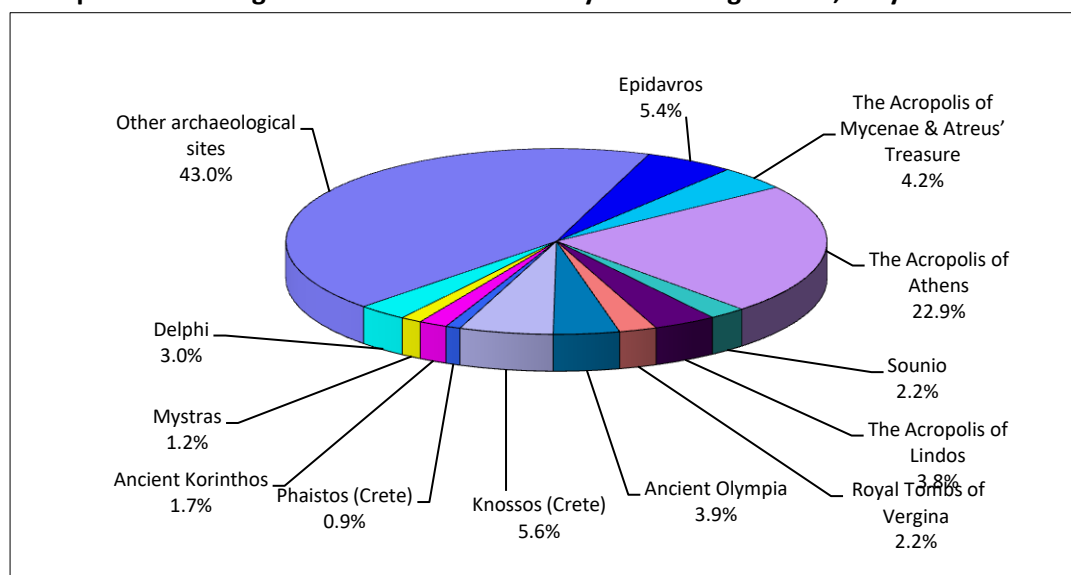
**Graph 2: Receipts from Museums and Archaeological Sites (Jan 2013 –May 2018)**



**Graph 3: Percentage distribution of Visitors by Museum, May 2018**



**Graph 4: Percentage distribution of Visitors by Archaeological site, May 2018**



**TABLE 2: VISITORS OF MUSEUMS AND ARCHAEOLOGICAL SITES - TOTAL RECEIPTS**  
(2016, 2017 AND JANUARY-MAY 2017 & 2018)

<b>I. VISITORS</b>					
Museums and Archaeological sites	2016	2017	JANUARY-MAY		change
			2017	2018	2018/2017
<b>Total number of visitors (A+B)</b>	<b>14,080,639</b>	<b>16,524,557<sup>(3)</sup></b>	<b>5,118,024<sup>(3)</sup></b>	<b>5,926,351</b>	<b>15.8%</b>
<b>A. Museums (C+E)</b>	<b>4,515,966</b>	<b>5,191,781</b>	<b>1,808,984</b>	<b>1,975,452</b>	<b>9.2%</b>
Acropolis Museum	1,406,096	1,593,362	560,450	633,374	13.0%
National Archaeological	447,093	545,555	208,827	213,232	2.1%
Ancient Olympia	124,136	145,118	57,958	64,234	10.8%
Palace of the Grand Master (Rhodes)	237,361	235,413	50,531	45,131	-10.7%
Herakleion Archaeological (Crete)	394,915	426,191	90,739	140,456	54.8%
White Tower	290,192	268,149	99,824	77,233	-22.6%
Delphi	166,091	211,827	85,747	98,028	14.3%
Other museums	1,450,082	1,766,166	654,908	703,764	7.5%
<b>B. Archaeological Sites (D+F)</b>	<b>9,564,673</b>	<b>11,332,776<sup>(3)</sup></b>	<b>3,309,040<sup>(3)</sup></b>	<b>3,950,899</b>	<b>19.4%</b>
Epidavros <sup>(1)</sup>	375,437	469,060	181,857	220,660	21.3%
The Acropolis of Mycenae & Atreus' Treasure <sup>(3)</sup>	342,854	412,397 <sup>(3)</sup>	158,979 <sup>(3)</sup>	199,277	25.3%
The Acropolis of Athens <sup>(2)</sup>	1,807,580	2,766,218	767,850	1,079,010	40.5%
Sounio	222,800	259,709	90,447	116,108	28.4%
The Acropolis of Lindos	421,070	441,012	71,078	81,275	14.3%
Royal Tombs of Vergina	186,627	203,632	88,942	98,616	10.9%
Ancient Olympia	423,424	481,252	130,428	145,532	11.6%
Knossos (Crete)	611,455	634,710	124,901	174,259	39.5%
Phaistos (Crete)	77,071	95,182	18,571	48,393	160.6%
Ancient Korinthos <sup>(1)</sup>	153,307	191,836	79,874	68,459	-14.3%
Mystras <sup>(1)</sup>	114,293	125,549	42,064	51,310	22.0%
Delphi	290,705	345,804	123,676	153,383	24.0%
Other archaeological sites	4,538,050	4,906,415	1,430,373	1,514,617	5.9%
<b>II. VISITORS WHO PAID TICKET</b>					
	2016	2017	JANUARY-MAY		change
			2017	2018	2018/2017
<b>Total number of visitors who paid ticket (C+D)</b>	<b>8,749,957</b>	<b>10,288,448</b>	<b>2,635,382</b>	<b>3,164,383</b>	<b>20.1%</b>
C. Museums	2,406,665	2,831,466	805,803	917,031	13.8%
D. Archaeological sites	6,343,292	7,456,982	1,829,579	2,247,352	22.8%
<b>III. VISITORS WITH FREE ADMISSION TICKETS</b>					
	2016	2017	JANUARY-MAY		change
			2017	2018	2017/2016
<b>Total number of visitors with free admission ticket (E+F)</b>	<b>5,330,682</b>	<b>6,236,109<sup>(3)</sup></b>	<b>2,482,642<sup>(3)</sup></b>	<b>2,761,968</b>	<b>11.3%</b>
E. Museums	2,109,301	2,360,315	1,003,181	1,058,421	5.5%
F. Archaeological sites	3,221,381	3,875,794 <sup>(3)</sup>	1,479,461 <sup>(3)</sup>	1,703,547	15.1%
<b>IV. RECEIPTS (euros)</b>					
	2016	2017	JANUARY-MAY		change
			2017	2018	2017/2016
<b>Total Receipts (G+H)</b>	<b>86,647,638.00</b>	<b>102,887,879.00</b>	<b>24,895,506.00</b>	<b>29,627,414.00</b>	<b>19.0%</b>
G. Museums	13,448,464.00	16,175,121.00	4,288,841.00	4,902,973.00	14.3%
H. Archaeological sites	73,199,174.00	86,712,758.00	20,606,665.00	24,724,441.00	20.0%

<sup>(1)</sup> Flat rate ticket, valid both for the museum and the archaeological site,

<sup>(2)</sup> From May 2017 onwards, the data for the number of tickets in the archaeological site of the Acropolis of Athens include the tickets of the Ancient Theatre of Dionysos.

<sup>(3)</sup> The data on the number of visitors to the archaeological site of the Acropolis of Mycenae & Atreus' Treasure for May 2017 have been revised

## EXPLANATORY NOTES

<b>Survey on Museums and Archaeological Sites Attendance</b>	<p>The Survey on Museums and Archaeological Sites Attendance has been producing results since 1970, The survey collects data from the Archaeological Receipts Fund (ARF) of the Ministry of Culture and Sports concerning the number of visitors and the receipts from the tickets sold in the Museums and Archaeological sites of the country.</p> <p>The corresponding data for the Acropolis Museum are available from December 2009 onwards.</p>
<b>Legal Framework</b>	<p>The survey is conducted since 1970 on a regular basis and it produces results on a monthly and yearly basis, in compliance with the Joint Ministerial Decision 15189/B379/73.</p>
<b>Reference Period</b>	<p>01/05/2018 to 31/05/2018.</p>
<b>Methodology and Definitions</b>	<p>The Survey is conducted on a monthly basis from data collected from the Archaeological Receipts Fund (ARF) of the Ministry of Culture and Sports concerning on the number of visitors and the receipts from the tickets sold in the Museums and Archaeological sites of the country, ELSTAT tabulates the data on Museums and the Archaeological sites for the whole of the Country, by month and by year.</p>

### Information on ticket payment

- From January 2002 onwards, the number of Museums' visitors includes both the visitors who have bought a ticket and the visitors with free admission ticket, From 16-06-1996 onwards, the Museums and the Archaeological sites all over Greece have a paid admission for all the visitors, Greeks and foreigners, all over the year, except in the following days, which are free admission days:
- National Holidays (25th of March and 28th of October)
- The first Sunday every month during the five month period from 1 November to 31 March
- The 6th of March (in memory of Melina Merkouri)
- The 18th of April (International Monuments Day)
- The 18th of May (International Museums Day)
- The 5th of June (International Environment Day)
- The last weekend of September, annually (European Heritage Days)

### Free admission tickets

The admission to Museums and Archaeological site is free for:

- Young people from EU-countries aged under 18 years, with current identification card to confirm their age,
- Students of Universities and of Higher and Technical Education Institutions or equivalent institutions of EU-countries, as well as of Tour Guide Training Institutes, with valid student identification card or International Student Identity Card (ISIC)
- Employees of the Hellenic Ministry of Culture, with valid professional identity card
- ICOM and ICOMOS cardholders
- Tour Guides with their current working identification card from the Ministry of Development
- Teachers accompanying pupils and students on primary, secondary and tertiary education institution tours
- Journalists with valid journalists' identification card
- Members of Associations and Societies of Friends of Museums and Archaeological Sites
- Official guests of the Greek Government, after relevant approval
- Escorts of blind persons and persons with disabilities
- Free admission cardholders
- Holders of the Culture Card

### Number of flat rate tickets

From April 1999 onwards, in some museums and the nearby archaeological sites, in addition to the ordinary ticket, a new "flat rate ticket" was established, which is valid for both the museum and the nearby archaeological site, The total number of these flat rate tickets for **May 2018** was **130,134**.

More information on the Survey on Museums and Archaeological Sites Attendance and detailed time series are available on: <http://www.statistics.gr/en/statistics/-/publication/SCI21/->