



PRESS RELEASE

TURNOVER INDICES FOR SPECIFIC ACTIVITIES OF THE SERVICES SECTOR: 4th quarter 2016

The Hellenic Statistical Authority (ELSTAT) announces the Turnover Indices for Specific Activities of the Services Sector, with base year 2010=100.0 for the 4th quarter of 2016.

The evolution of the Turnover Indices for Specific Activities of the Services Sector, according to provisional and working day adjusted data for specific activities of services, has as follows:

NACE Rev.2 Codes	Specific activities of services	Annual rate of change (%) Q4 2016 / Q4 2015
H53	Postal and courier activities	-11.4
J58	Publishing activities	-10.5
J61	Telecommunications	1.6
J62	Computer programming, consultancy and related activities	-1.2
J63	Information service activities	-29.6
M69	Legal and accounting activities	-5.6
M70.2	Management consultancy activities	-28.1
M71	Architectural and engineering activities; technical testing and analysis	-21.4
M73	Advertising and market research	-5.7
M74	Other professional, scientific and technical activities	-5.2
N78	Employment activities	23.1
N80	Security and investigation activities	-2.6
N81	Services to buildings and landscape activities	-21.2
N81.2	Cleaning activities	-21.7
N82	Office administrative, office support and other business support activities	10.7

Information:

Economic and Short-Term Indicators Division
Retail Prices and Price Indices Section
Michael Glenis - Anastasios Koutelas
Tel: 0030 213 135 2128 - 0030 213 135 2709
m.glenis@statistics.gr - a.koutelas@statistics.gr
Fax: 0030 213 135 2724

Table1
Annual rates of change of the turnover indices for specific activities of the Services Sector
(Working day adjusted data)
(2010=100.0)

NACE Rev.2 code	Economic activities	Q4 2016*	Q4 2015	Q4 2014	YoY(%) Q4 2016 / Q4 2015	YoY(%) Q4 2015 / Q4 2014
H53	Postal and courier activities	79.5	89.7	87.5	-11.4	2.5
J58	Publishing activities	53.5	59.7	63.2	-10.5	-5.5
J61	Telecommunications	75.3	74.1	76.7	1.6	-3.4
J62	Computer programming, consultancy and related activities	113.4	114.8	112.6	-1.2	2.0
J63	Information service activities	111.2	157.8	80.9	-29.6	95.2
M69	Legal and accounting activities	148.7	157.6	135.3	-5.6	16.4
M70.2	Management consultancy activities	85.4	118.7	142.7	-28.1	-16.8
M71	Architectural and engineering activities; technical testing and analysis	67.8	86.3	77.1	-21.4	11.9
M73	Advertising and market research	60.8	64.4	65.8	-5.7	-2.0
M74	Other professional, scientific and technical activities	78.5	82.8	66.9	-5.2	23.7
N78	Employment activities	183.7	149.2	118.7	23.1	25.7
N80	Security and investigation activities	99.4	102.1	86.8	-2.6	17.6
N81	Services to buildings and landscape activities	48.9	62.1	58.5	-21.2	6.1
N81.2	Cleaning activities	48.1	61.5	58.3	-21.7	5.3
N82	Office administrative, office support and other business support activities	123.6	111.6	50.3	10.7	121.7

*Provisional data

Notes: It should be noted that the Turnover Indices for Specific Activities of the Services Sector and percentage changes are published with one decimal figure.

Table 2
Quarterly rates of change of the turnover indices for specific activities of the Services Sector
(Working day adjusted data)
(2010=100.0)

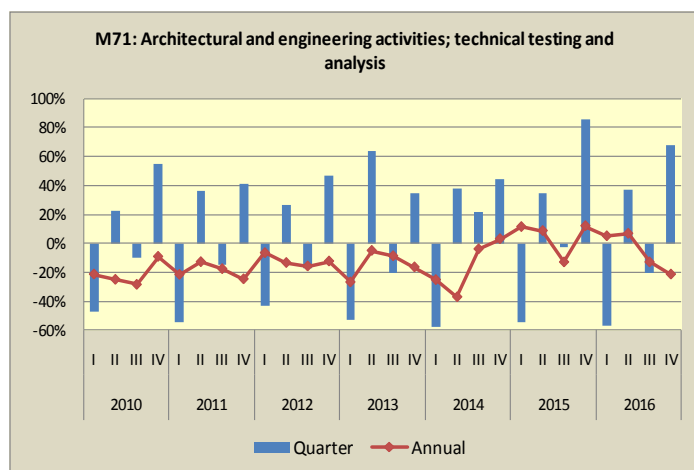
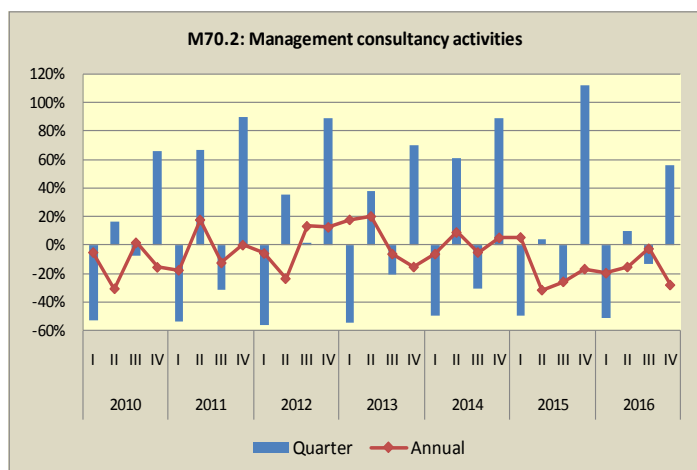
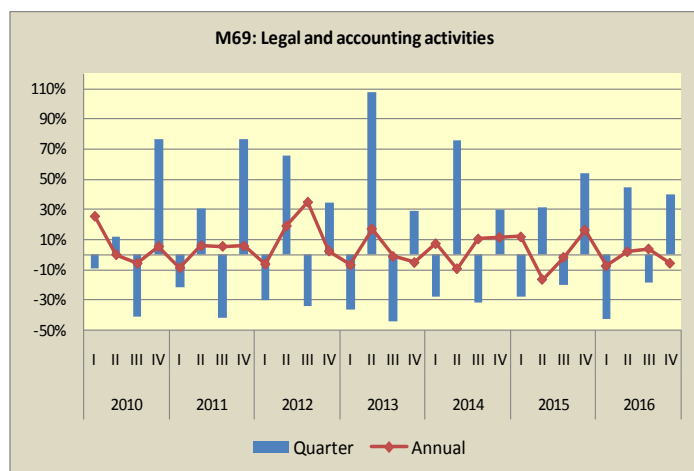
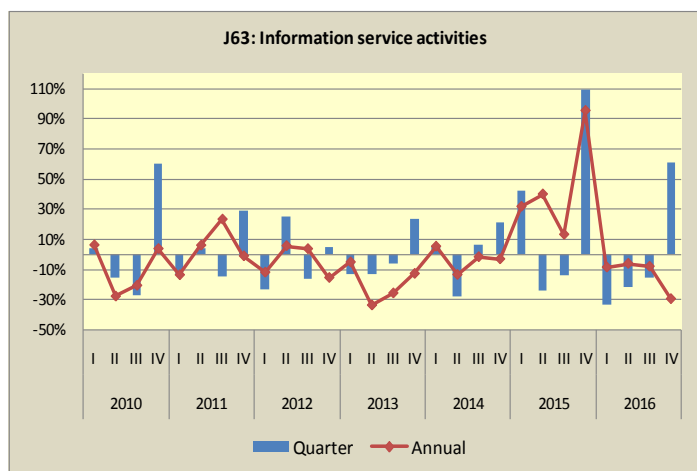
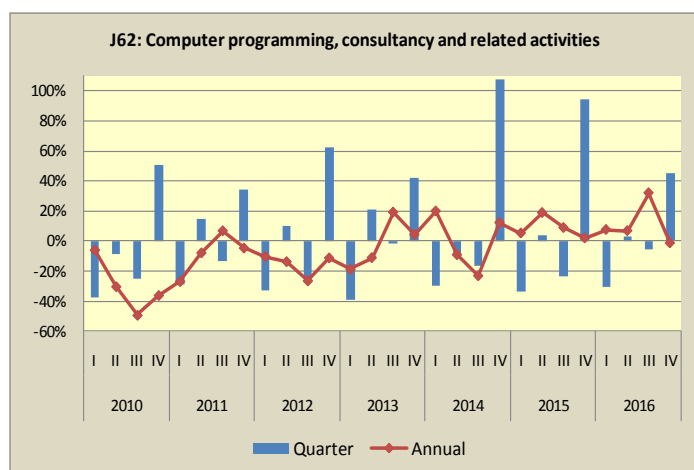
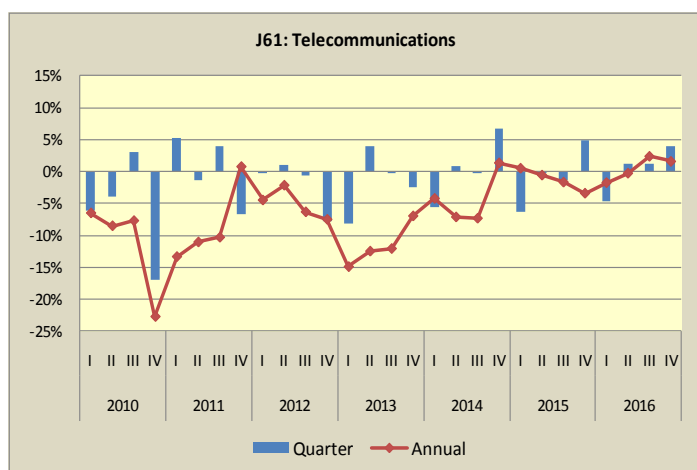
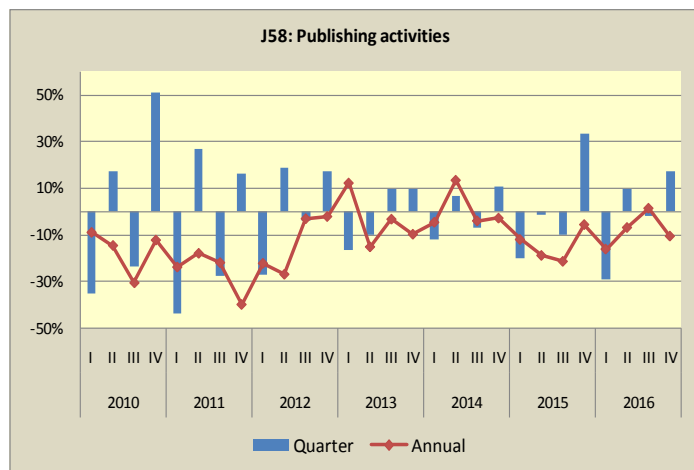
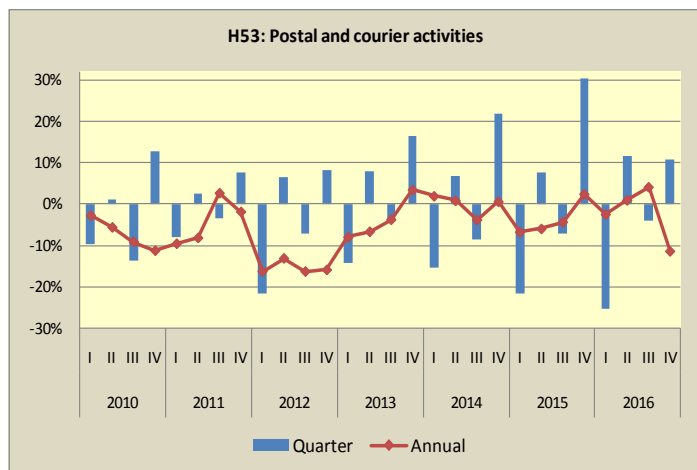
NACE Rev.2 code	Economic activities	Q4 2016*	Q3 2016**	QoQ(%) Q4 2016 / Q3 2016	Q4 2015	Q3 2015	QoQ(%) Q4 2015 / Q3 2015
H53	Postal and courier activities	79.5	71.7	10.8	89.7	68.8	30.4
J58	Publishing activities	53.5	45.5	17.5	59.7	44.8	33.2
J61	Telecommunications	75.3	72.4	4.0	74.1	70.7	4.8
J62	Computer programming, consultancy and related activities	113.4	78.1	45.3	114.8	59.2	94.2
J63	Information service activities	111.2	69.2	60.6	157.8	75.3	109.5
M69	Legal and accounting activities	148.7	106.3	39.9	157.6	102.3	54.0
M70.2	Management consultancy activities	85.4	54.7	56.2	118.7	56.0	111.8
M71	Architectural and engineering activities; technical testing and analysis	67.8	40.4	67.9	86.3	46.4	86.0
M73	Advertising and market research	60.8	33.4	82.1	64.4	34.6	86.1
M74	Other professional, scientific and technical activities	78.5	60.3	30.2	82.8	61.1	35.6
N78	Employment activities	183.7	148.3	23.8	149.2	121.1	23.3
N80	Security and investigation activities	99.4	88.4	12.4	102.1	89.9	13.5
N81	Services to buildings and landscape activities	48.9	41.7	17.1	62.1	53.8	15.4
N81.2	Cleaning activities	48.1	41.0	17.2	61.5	53.1	15.7
N82	Office administrative, office support and other business support activities	123.6	112.6	9.7	111.6	80.8	38.1

*Provisional data

**Revised data

Notes: It should be noted that the Turnover Indices for Specific Activities of the Services Sector and percentage changes are published with one decimal figure.

Quarter and annual rates of change of the turnover indices for specific activities of the Services Sector (2010-2016)



Quarter and annual rates of change of the turnover indices for specific activities of the Services Sector (2010-2016)
(continued)

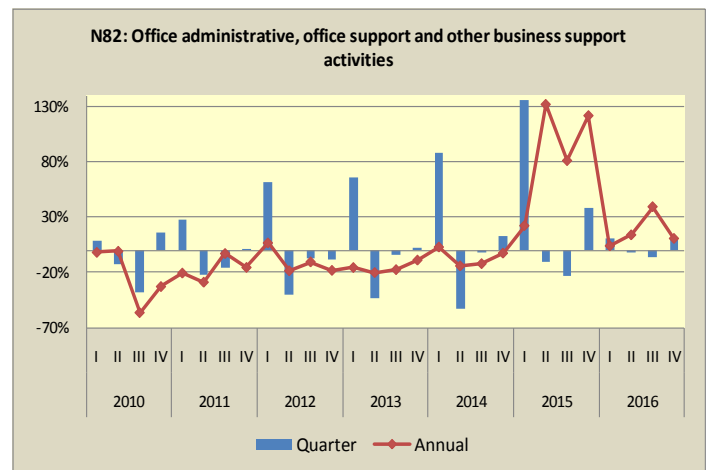
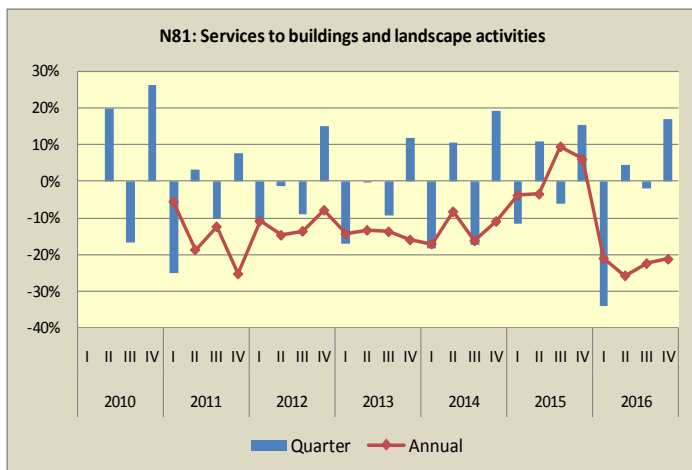
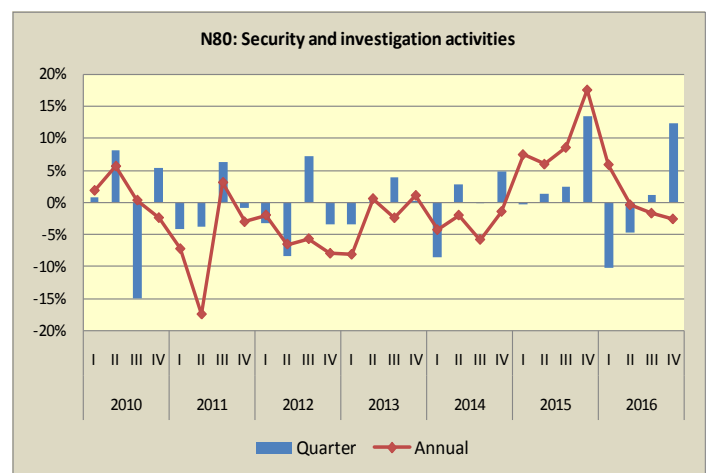
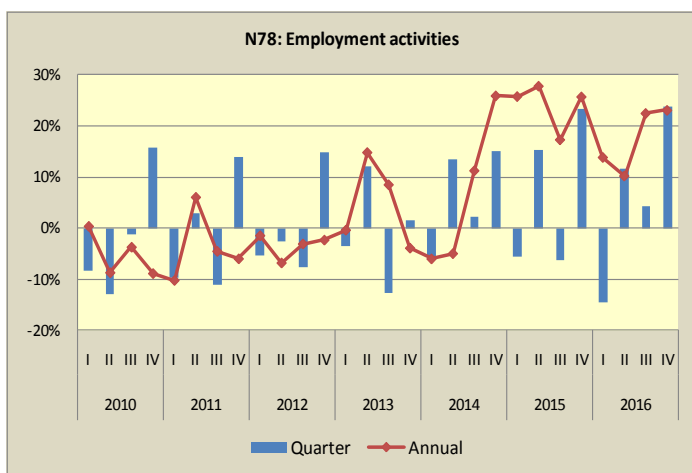
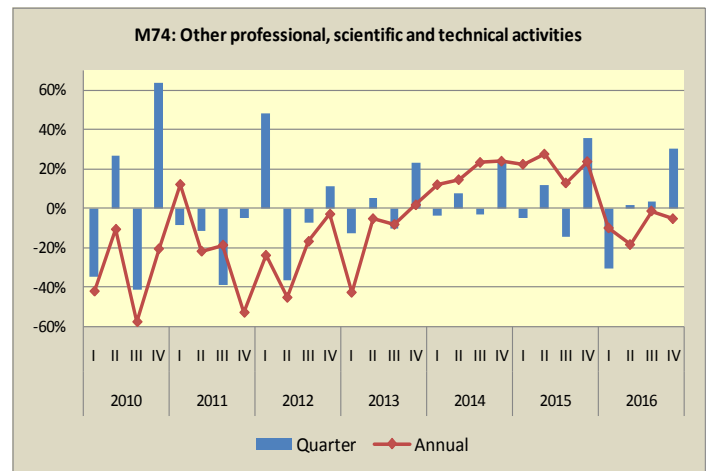
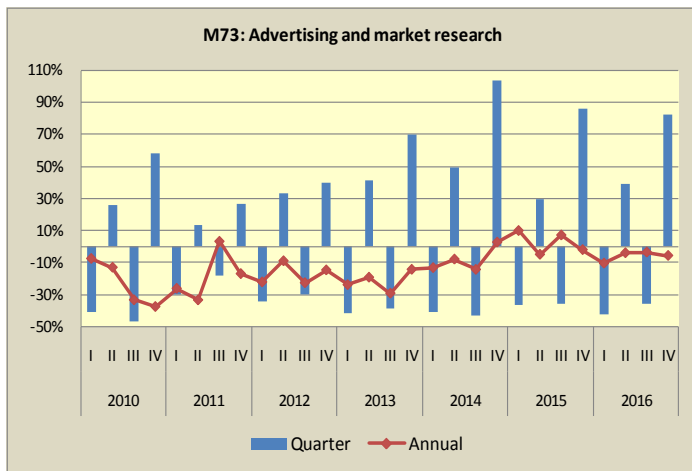


Table 3. Turnover indices for specific activities of the Services Sector (working day adjusted data) (2010=100.0) (2011-2016)

Year - Quarter	Divisions of economic activities for the Nace Rev.2 classification															
	H53	J58	J61	J62	J63	M69	M70.2	M71	M73	M74	N78	N80	N81	N81.2	N82	
	Postal and courier activities	Publishing activities	Telecom-munications	Computer programming, consultancy and related activities	Information service activities	Legal and accounting activities	Management consultancy activities	Architectural and engineering activities; technical testing and analysis	Advertising and market research	Other professional, scientific and technical activities	Employment activities	Security and investigation activities	Services to buildings and landscape activities	Cleaning activities	Office administrative, office support and other business support activities	
2011	I	93.6	68.8	91.8	80.8	99.6	92.7	65.5	62.1	74.1	106.0	96.4	93.5	84.7	84.1	104.9
	II	96.1	87.2	90.6	92.8	103.7	120.8	109.3	84.7	84.2	93.7	99.2	89.9	87.5	87.0	81.8
	III	92.7	63.2	94.1	80.4	88.3	70.5	74.9	72.4	69.1	57.3	88.1	95.5	78.5	77.7	68.8
	IV	99.9	73.5	87.9	108.3	113.6	124.7	142.3	102.3	87.8	54.6	100.4	94.6	84.7	84.7	69.3
	Annual Average	95.6	73.2	91.1	90.6	101.3	102.2	98.0	80.4	78.8	77.9	96.0	93.4	83.9	83.4	81.2
2012	I	78.4	53.5	87.7	72.6	87.6	87.0	61.7	58.0	57.6	80.8	95.0	91.6	75.6	75.1	111.8
	II	83.5	63.7	88.7	80.2	109.4	144.0	83.5	73.3	76.6	51.4	92.5	84.0	74.7	73.8	66.6
	III	77.6	61.3	88.2	59.2	91.4	95.2	84.9	60.9	53.4	47.7	85.4	90.1	67.9	66.7	61.6
	IV	84.0	72.0	81.3	96.1	95.9	127.8	160.3	89.6	74.9	53.0	98.1	87.1	78.1	77.1	56.7
	Annual Average	80.9	62.6	86.5	77.0	96.1	113.5	97.6	70.5	65.6	58.3	92.8	88.2	74.1	73.2	74.2
2013	I	72.1	60.1	74.7	59.0	83.0	81.1	72.8	42.5	43.8	46.4	94.7	84.2	64.8	64.7	94.4
	II	78.0	54.0	77.6	71.4	72.4	168.9	100.5	69.6	61.8	48.8	106.2	84.5	64.7	64.2	53.2
	III	74.7	59.4	77.6	70.5	67.8	94.2	79.6	55.6	37.8	43.9	92.7	87.9	58.6	58.2	50.8
	IV	87.0	65.0	75.7	100.3	83.6	121.3	135.6	74.9	64.1	54.0	94.2	88.0	65.6	65.9	51.7
	Annual Average	77.9	59.6	76.4	75.3	76.7	116.4	97.1	60.6	51.9	48.3	97.0	86.2	63.4	63.2	62.5
2014	I	73.6	57.4	71.5	70.7	87.3	87.2	68.2	31.8	38.0	52.0	89.0	80.6	53.7	53.5	97.1
	II	78.6	61.4	72.1	64.9	62.6	153.3	109.6	43.8	56.9	55.9	100.9	82.8	59.4	58.9	45.7
	III	71.9	57.0	71.9	54.3	66.6	104.1	75.6	53.4	32.3	54.1	103.2	82.8	49.1	48.5	44.6
	IV	87.5	63.2	76.7	112.6	80.9	135.3	142.7	77.1	65.8	66.9	118.7	86.8	58.5	58.3	50.3
	Annual Average	77.9	59.8	73.0	75.6	74.3	120.0	99.0	51.5	48.3	57.2	103.0	83.2	55.2	54.8	59.4
2015	I	68.6	50.5	71.9	74.4	114.8	97.5	72.0	35.4	41.8	63.6	112.0	86.6	51.7	51.1	118.7
	II	74.0	49.8	71.7	77.1	87.5	128.3	74.9	47.6	54.1	71.3	129.0	87.8	57.4	56.7	105.9
	III	68.8	44.8	70.7	59.2	75.3	102.3	56.0	46.4	34.6	61.1	121.1	89.9	53.8	53.1	80.8
	IV	89.7	59.7	74.1	114.9	157.8	157.6	118.7	86.3	64.4	82.8	149.2	102.1	62.1	61.5	111.6
	Annual Average	75.3	51.2	72.1	81.4	108.9	121.4	80.4	53.9	48.7	69.7	127.8	91.6	56.3	55.6	104.3
2016	I	66.9	42.4	70.6	80.1	104.9	90.3	57.8	37.1	37.4	57.3	127.5	91.7	40.9	40.2	123.5
	II	74.7	46.4	71.5	82.4	82.1	130.9	63.3	50.8	51.9	58.2	142.2	87.4	42.6	41.9	120.7
	III**	71.7	45.5	72.4	78.1	69.2	106.3	54.7	40.4	33.4	60.3	148.3	88.4	41.7	41.0	112.6
	IV*	79.5	53.5	75.3	113.4	111.2	148.7	85.4	67.8	60.8	78.5	183.7	99.4	48.9	48.1	123.6
	Annual Average	73.2	47.0	72.5	88.5	91.8	119.1	65.3	49.0	45.9	63.6	150.4	91.7	43.5	42.8	120.1

*Provisional data

**Revised data

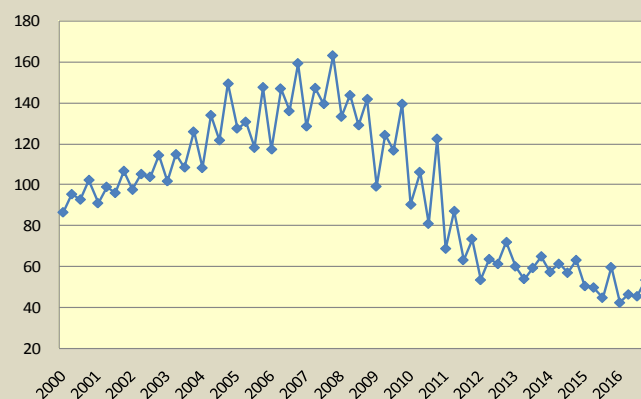
Notes: The Turnover Indices for Specific Activities of the Services Sector are published with one decimal figure.

Historical evolution of Turnover Indices for Specific Activities in Services Sector (2000-2016)

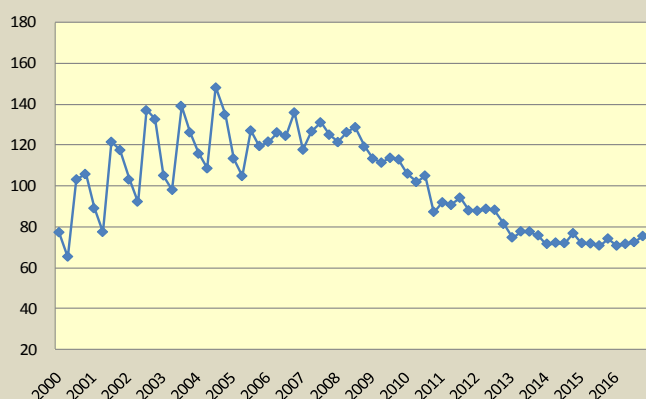
H53: Postal and courier activities



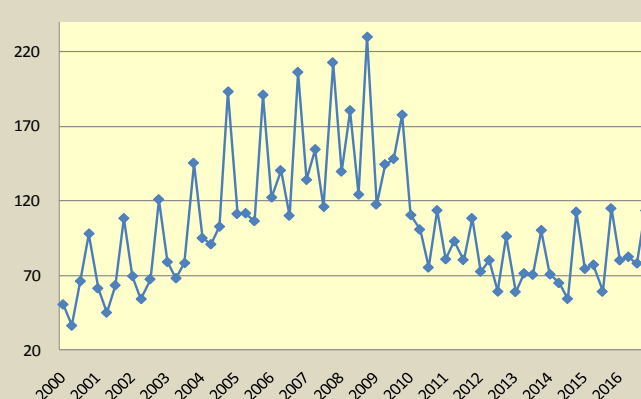
J58: Publishing activities



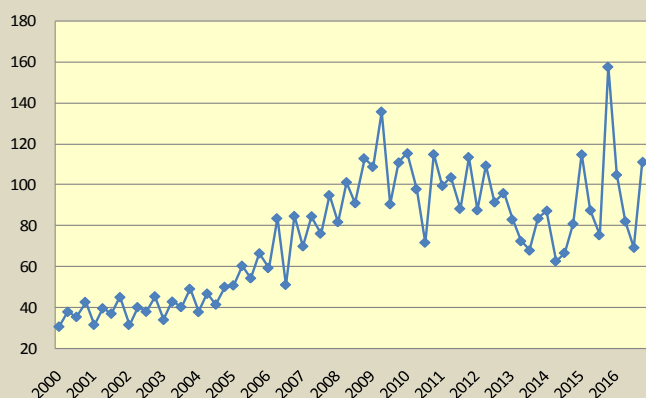
J61: Telecommunications



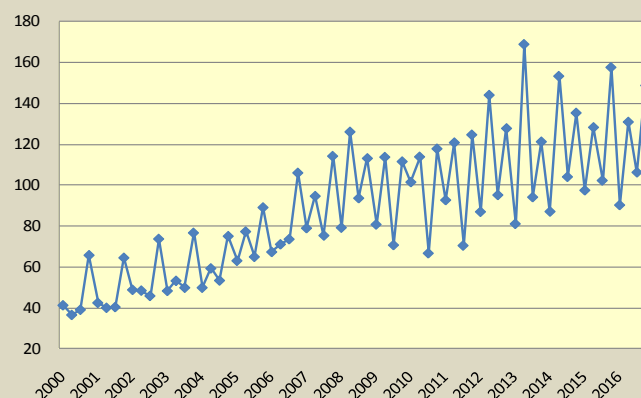
J62: Computer programming, consultancy and related activities



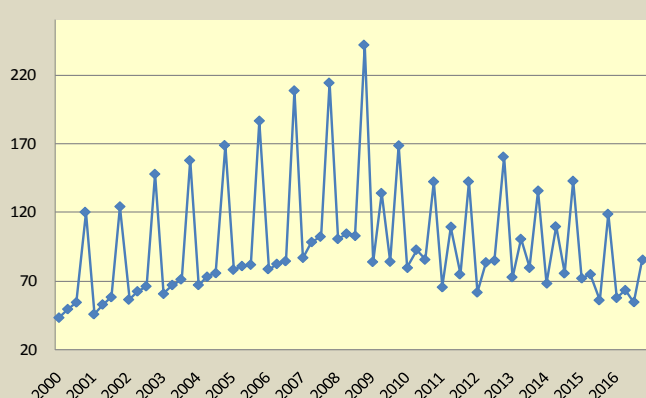
J63: Information service activities



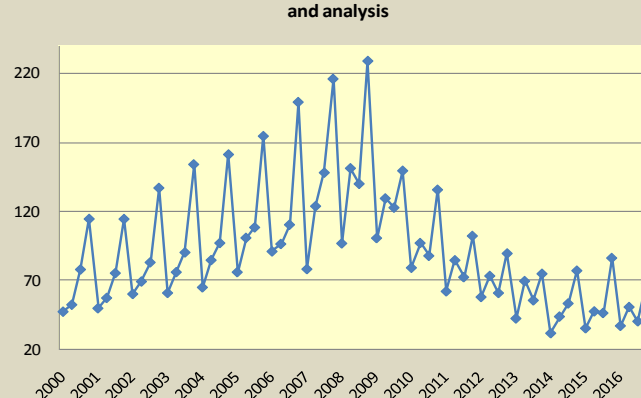
M69: Legal and accounting activities



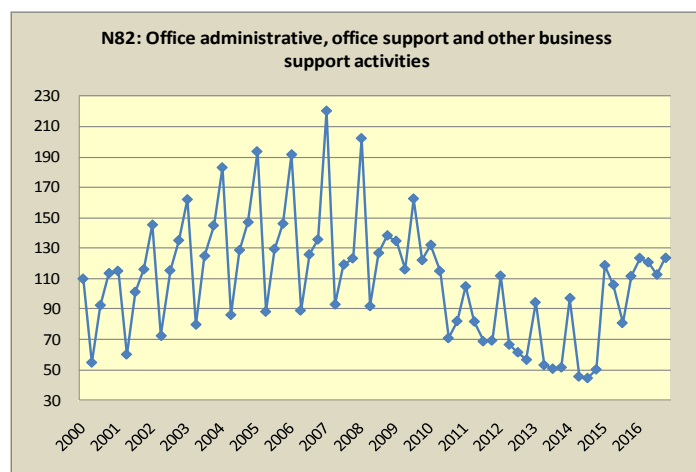
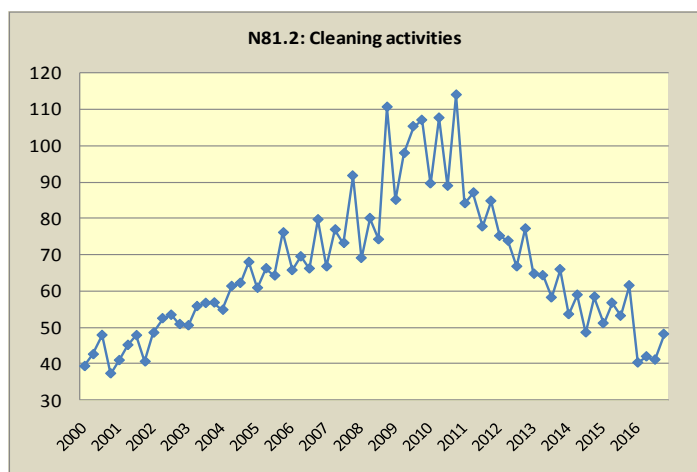
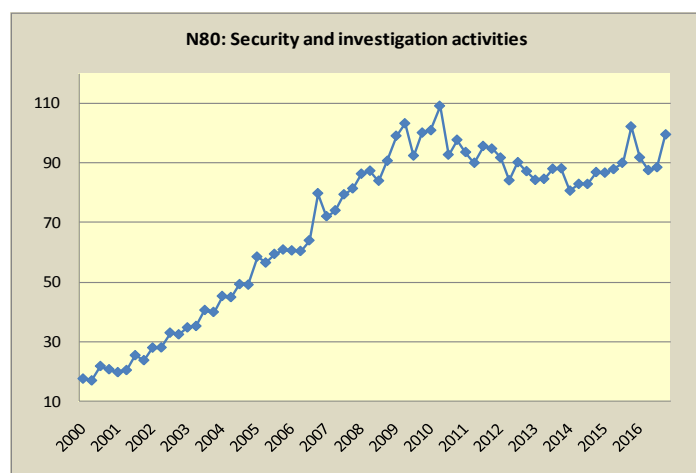
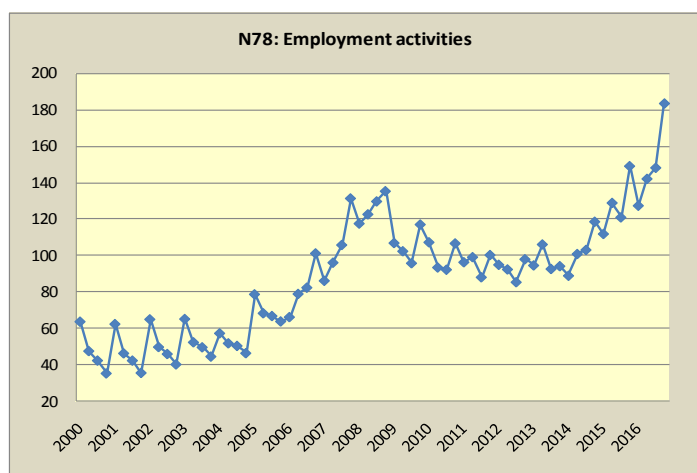
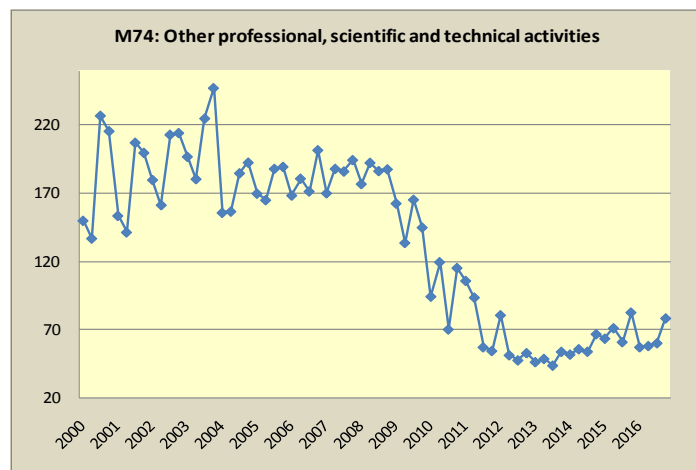
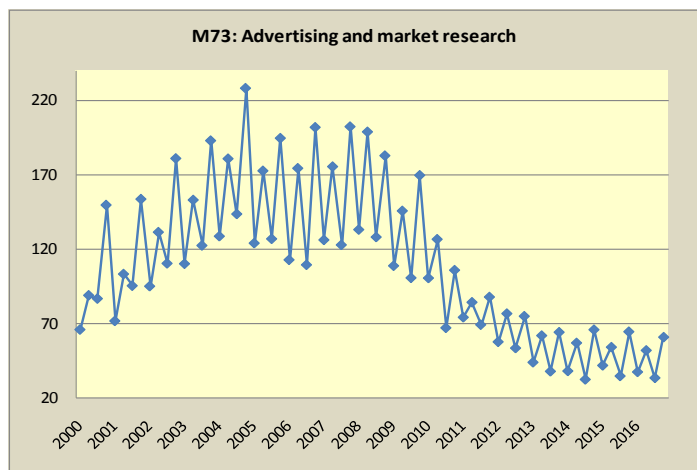
M70.2: Management consultancy activities



M71: Architectural and engineering activities; technical testing and analysis



Historical evolution of Turnover Indices for Specific Activities in Services Sector (2000-2016) (continued)



METHOLOGICAL NOTES

General The Turnover Indices for specific activities of the Services Sector are quarterly indices and have been compiled since 2000.

Purpose of the Indices - Definitions The Turnover Indices for Specific Activities of the Services Sector are business cycle indicators, which illustrate the quarterly activity of the services sector in terms of value. Turnover comprises the total values invoiced by the observation unit during the reference period corresponding to the market sales of goods or services supplied to third parties. Turnover also includes all the other charges (transport, packaging, etc.) passed on to the customer, even if these charges are listed separately on the invoice.

Turnover excludes VAT and other similar deductible taxes directly linked to turnover, as well as all duties and taxes on the goods or services invoiced by the enterprise.

Legal basis The Turnover Indices for Specific Activities of the Services Sector are short-term indices and are compiled pursuant to Council Regulation (EC) No 1165/98 concerning short-term statistics, in the framework of the requirements of Regulation No 1158/2005 of the European Parliament and Council amending Council Regulation (EC) No 1165/98.

Reference period Quarter.

Base year 2010=100.0.

Revision The Turnover Indices for Specific Activities of the Services Sector are revised every 5 years, in compliance with Council Regulation No 1165/98, according to which the short-term indices are revised every 5 years, with base year ending in 0 or 5.

Statistical classification Eurostat statistical classification of economic activities, NACE Rev.2, is used (Regulation 1893/2006 of the European Parliament and Council).

Geographical coverage The Indices cover the whole country.

Coverage of economic activities

- Postal and courier activities (Section H division 53)
- Publishing activities (Section J division 58)
- Telecommunications (Section J division 61)
- Computer programming, consultancy and related activities (Section J division 62)
- Information service activities (Section J division 63)
- Legal and accounting activities (Section M division 69)
- Management consultancy activities (Section M division 70.2)
- Architectural and engineering activities; technical testing and analysis (Section M division 71)
- Advertising and market research (Section M division 73)
- Other professional, scientific and technical activities (Section M division 74)
- Employment activities (Section N division 78)
- Security and investigation activities (Section N division 80)
- Services to buildings and landscape activities (Section N division 81)
- Cleaning activities (Section N division 81.2)
- Office administrative, office support and other business support activities (Section N division 82)

Statistical survey The sampling unit used is the enterprise. In the base year 2010, the statistical population of enterprises for the aforementioned NACE Rev. 2 Divisions amounted to 12,159 enterprises for the base year 2010, according to the Business Registry of ELSTAT. Since it was not feasible to collect the necessary statistical data from such a large number of enterprises, a representative sample of 589 enterprises was selected, with annual turnover (2010) equal or bigger than 100,000 euro. The total turnover of the above mentioned enterprises accounted for 67 – 70 % of the total turnover for each division of NACE Rev. 2. The single - stage stratified random sampling was used for the selection of the enterprises for the sample. For each division, the enterprises included in the survey were stratified in 8 size classes, based on their turnover during 2010.

- Compilation of indices** The indices are compiled by applying the chain-linking method, while the indices are adjusted to a typical quarter by multiplying the estimated turnover values with an adjustment factor in accordance by the working days of each quarter. The typical quarter refers to the real number of working days.
- Publication of data** The data of the Turnover Indices for Specific Activities of the Services Sector with base year 2010=100.0 are published from the first quarter 2016 onwards, while backcasted data are available from the first quarter 2000.
- References** More information concerning the compilation methodology of the Turnover Indices for specific activities of the Services Sector, as well as backcasted data are available on the website of ELSTAT (www.statistics.gr/en/home) and particularly on link www.statistics.gr/en/statistics/-/publication/DKT54/-